

Released February 17, 2005, by the National Agricultural Statistics Service (NASS), Agricultural Statistics Board, U.S. Department of Agriculture. For information on *Milk Production* call Ty Kalas at 202-690-3236, office hours 7:30 a.m. to 4:00 p.m. ET.

Update Alert

The annual milk per cow for Alabama on page 6 was corrected to 14,412 pounds from 20,882 pounds.

January Milk Production Up 1.3 Percent

NASS added Colorado, Kansas, and Oregon to the monthly milk production estimating program beginning in January 2005. Historic estimates have been created for these States back to 2003 for comparison purposes. The 23 States in the monthly estimating program account for 91 percent of the U.S. milk production. The last major change to the monthly estimating program was in 1997, when Maryland, North Carolina and Tennessee were dropped and Arizona was added.

Milk production in the 23 major States during January totaled 13.2 billion pounds, up 1.3 percent from January 2004. December production, at 13.0 billion pounds, was up 1.2 percent from December 2003.

Production per cow in the 23 major States averaged 1,637 pounds for January, 13 pounds above January 2004.

The number of cows on farms in the 23 major States was 8.08 million head, 38,000 head more than January 2004, but 15,000 head less than December 2004.

2004 Annual Milk Production Up 0.2 Percent from 2003

The annual production of milk for the U.S. during 2004 was 170.8 billion pounds, 0.2 percent above 2003. Revisions to 2003 production increased the annual total 82 million pounds. Revised 2004 production was up 0.2 percent or 323 million pounds from last month's publication.

Production per cow in the U.S. averaged 18,957 pounds for 2004, 197 pounds above 2003. The average annual rate of milk production per cow has increased 16 percent from 1995.

The average number of milk cows on farms in the U.S. during 2004 was 9.01 million head, down 0.8 percent from 2003. The average number of milk cows was revised down 1,000 head for 2003, and up 1,000 head for 2004.

Special Note

Included in this issue are monthly, quarterly, and annual revisions, by State, U.S., and Puerto Rico for 2003-2004.

This issue also contains the Number of Milk Cow Operations and Licensed Dairy Herds, by State, U.S., and Puerto Rico for 2003-2004.

Milk Cows and Production: By Quarter, United States, 2004-2005 ¹

Quarter	Milk Cows ²		Milk Per Cow ³		Milk Production ³		
	2004	2005	2004	2005	2004	2005	Change From 2004
	<i>1,000 Head</i>	<i>1,000 Head</i>	<i>Pounds</i>	<i>Pounds</i>	<i>Million Pounds</i>	<i>Million Pounds</i>	<i>Percent</i>
Jan-Mar	8,993		4,755		42,759		
Apr-Jun	9,001		4,869		43,824		
Jul-Sep	9,027		4,679		42,239		
Oct-Dec	9,019		4,655		41,983		
Annual	9,010		18,957		170,805		

¹ May not add due to rounding.

² Includes dry cows, excludes heifers not yet fresh.

³ Excludes milk sucked by calves.

Milk Cows and Production: By Month, 23 Selected States, 2004-2005 ¹

	Milk Cows ²		Milk Per Cow ³		Milk Production ³		
	2004	2005	2004	2005	2004	2005	Change From 2004
	<i>1,000 Head</i>	<i>1,000 Head</i>	<i>Pounds</i>	<i>Pounds</i>	<i>Million Pounds</i>	<i>Million Pounds</i>	<i>Percent</i>
Jan	8,044	8,082	1,624	1,637	13,061	13,229	1.3
Feb	8,051		1,531		12,329		
Mar	8,059		1,661		13,387		
Apr	8,063		1,636		13,194		
May	8,064		1,692		13,641		
Jun	8,083		1,607		12,988		
Jul	8,096		1,623		13,143		
Aug	8,102		1,601		12,970		
Sep	8,104		1,533		12,426		
Oct	8,103		1,583		12,824		
Nov	8,102		1,531		12,404		
Dec	8,097		1,610		13,037		
Annual	8,081		19,232		155,404		

¹ 2004 revised.

² Includes dry cows, excludes heifers not yet fresh.

³ Excludes milk sucked by calves.

Estimated Milk Cows and Production: By Month, United States, 2003-2004 ¹

Month	Milk Cows ²		Milk Per Cow ³		Milk Production ³		
	2004	2005	2004	2005	2004	2005	Change From 2004
	<i>1,000 Head</i>	<i>1,000 Head</i>	<i>Pounds</i>	<i>Pounds</i>	<i>Million Pounds</i>	<i>Million Pounds</i>	<i>Percent</i>
Jan	8,985	8,993	1,603	1,616	14,402	14,535	0.9
Feb	8,993		1,512		13,595		
Mar	9,002		1,640		14,762		
Apr	8,999		1,613		14,519		
May	8,991		1,670		15,012		
Jun	9,014		1,586		14,293		
Jul	9,028		1,596		14,405		
Aug	9,029		1,574		14,215		
Sep	9,025		1,509		13,619		
Oct	9,023		1,559		14,070		
Nov	9,021		1,509		13,610		
Dec	9,013		1,587		14,303		
Annual	9,010		18,957		170,805		

¹ 2004 revised.

² Includes dry cows, excludes heifers not yet fresh.

³ Excludes milk sucked by calves.

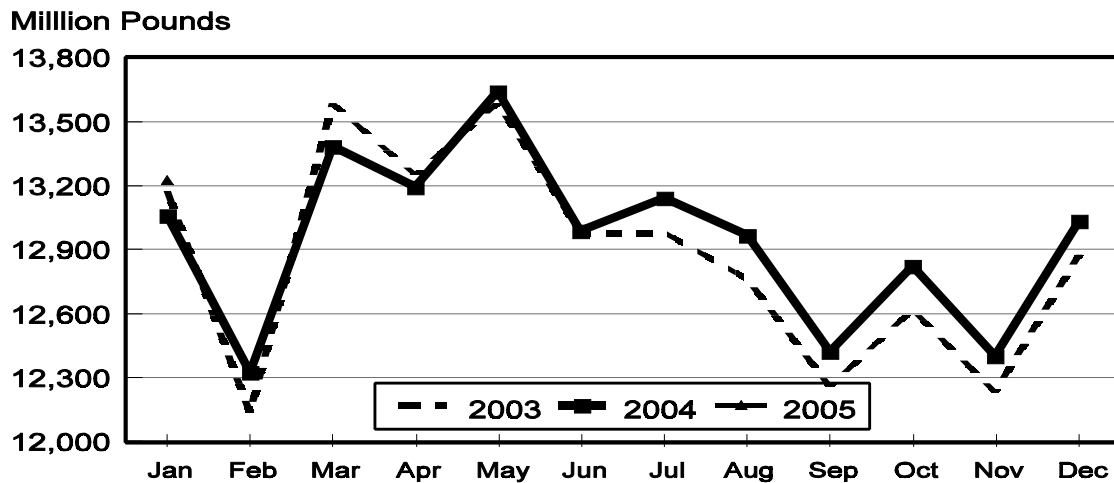
Milk Cows and Production: By State, January 2004-2005

State	Milk Cows ¹		Milk Per Cow ²		Milk Production ²		Change From 2004
	2004	2005	2004	2005	2004	2005	
	<i>1,000 Head</i>	<i>1,000 Head</i>	<i>Pounds</i>	<i>Pounds</i>	<i>Million Pounds</i>	<i>Million Pounds</i>	<i>Percent</i>
AZ	155	165	2,010	1,970	312	325	4.2
CA	1,701	1,739	1,760	1,770	2,994	3,078	2.8
CO	99	100	1,830	1,830	181	183	1.1
FL	140	138	1,435	1,500	201	207	3.0
ID	412	435	1,800	1,800	742	783	5.5
IL	108	105	1,610	1,620	174	170	-2.3
IN	145	154	1,695	1,630	246	251	2.0
IA	196	187	1,680	1,715	329	321	-2.4
KS	111	109	1,695	1,730	188	189	0.5
KY	112	110	1,090	1,080	122	119	-2.5
MI	300	306	1,780	1,770	534	542	1.5
MN	465	460	1,505	1,510	700	695	-0.7
MO	125	118	1,265	1,300	158	153	-3.2
NM	325	319	1,760	1,710	572	545	-4.7
NY	658	650	1,490	1,535	980	998	1.8
OH	258	267	1,450	1,460	374	390	4.3
OR	118	120	1,565	1,565	185	188	1.6
PA	563	564	1,500	1,540	845	869	2.8
TX	317	318	1,660	1,655	526	526	0.0
VT	146	143	1,515	1,560	221	223	0.9
VA	105	105	1,410	1,450	148	152	2.7
WA	240	235	1,895	1,945	455	457	0.4
WI	1,245	1,235	1,505	1,510	1,874	1,865	-0.5
23-State Total	8,044	8,082	1,624	1,637	13,061	13,229	1.3

¹ Includes dry cows, excludes heifers not yet fresh.

² Excludes milk sucked by calves.

**Monthly Milk Production
23 States**



Milk Cows and Production: By State, December 2003-2004 ¹

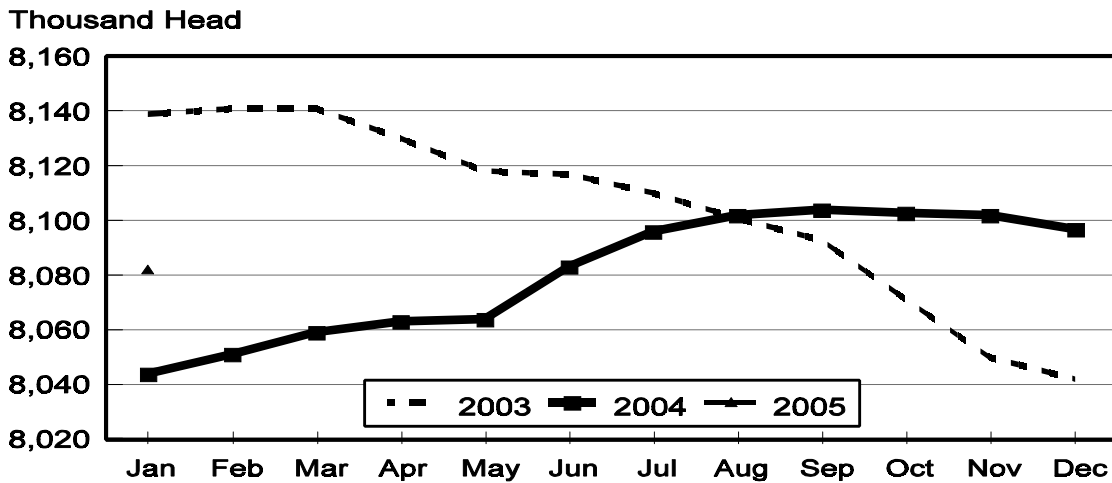
State	Milk Cows ²		Milk per Cow ³		Milk Production ³		
	2003	2004	2003	2004	2003	2004	Change From 2003
	<i>1,000 Head</i>	<i>1,000 Head</i>	<i>Pounds</i>	<i>Pounds</i>	<i>Million Pounds</i>	<i>Million Pounds</i>	<i>Percent</i>
AZ	155	166	1,920	1,905	298	316	6.0
CA	1,697	1,741	1,740	1,775	2,953	3,090	4.6
CO	99	102	1,830	1,845	181	188	3.9
FL	140	138	1,355	1,450	190	200	5.3
ID	412	435	1,800	1,800	742	783	5.5
IL	109	106	1,585	1,540	173	163	-5.8
IN	146	155	1,670	1,600	244	248	1.6
IA	197	188	1,640	1,700	323	320	-0.9
KS	110	111	1,685	1,680	185	186	0.5
KY	112	110	1,070	1,055	120	116	-3.3
MI	301	307	1,765	1,730	531	531	
MN	465	460	1,485	1,475	691	679	-1.7
MO	124	119	1,250	1,270	155	151	-2.6
NM	324	321	1,730	1,650	561	530	-5.5
NY	657	650	1,480	1,485	972	965	-0.7
OH	258	266	1,440	1,450	372	386	3.8
OR	117	120	1,570	1,570	184	188	2.2
PA	562	565	1,480	1,490	832	842	1.2
TX	317	319	1,575	1,555	499	496	-0.6
VT	146	143	1,505	1,515	220	217	-1.4
VA	106	104	1,335	1,420	142	148	4.2
WA	241	235	1,900	1,925	458	452	-1.3
WI	1,247	1,236	1,485	1,490	1,852	1,842	-0.5
23-State Total	8,042	8,097	1,601	1,610	12,878	13,037	1.2

¹ 2003 and 2004 revised.

² Includes dry cows, excludes heifers not yet fresh.

³ Excludes milk sucked by calves.

**Monthly Milk Cows
23 States**



Milk Cows and Production: United States, 1995-2004 ¹

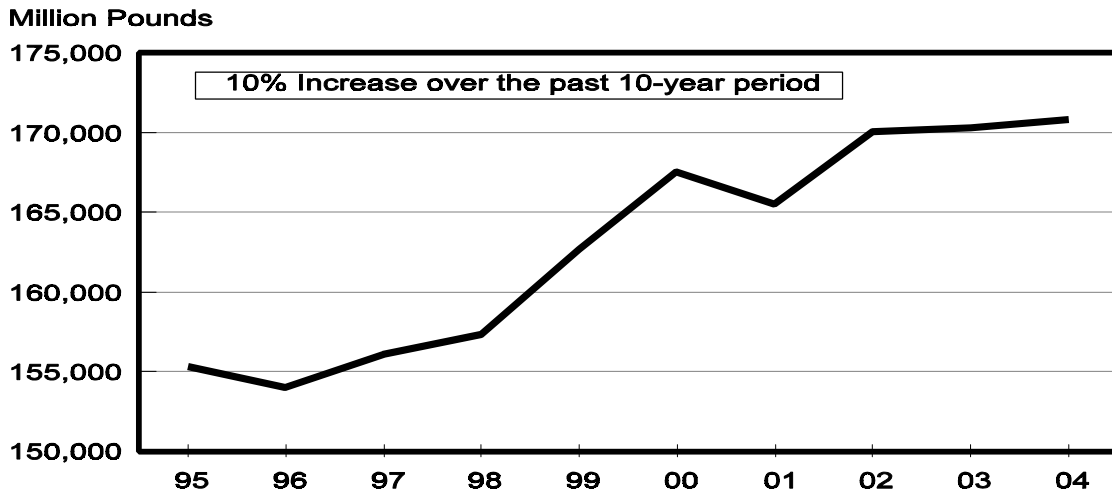
Year	Milk Cows ² <i>1,000 Head</i>	Production per Cow ³		Milk Production ³
		Milk <i>Pounds</i>		Total <i>Million Pounds</i>
1995	9,466		16,405	155,292
1996	9,372		16,433	154,006
1997	9,252		16,871	156,091
1998	9,151		17,185	157,262
1999	9,153		17,763	162,589
2000	9,199		18,197	167,393
2001	9,103		18,162	165,332
2002	9,139		18,608	170,063
2003	9,083		18,760	170,394
2004	9,010		18,957	170,805

¹ May not add due to rounding.

² Average number during year, excluding heifers not yet fresh.

³ Excludes milk sucked by calves.

**Milk Production, 1995-2004
United States**



Milk Cows and Production: By State, United States, and Puerto Rico, 2003-2004

State	Milk Cows ¹		Milk Per Cow ²		Milk Production ²		Change From 2003
	2003	2004	2003	2004	2003	2004	
	<i>1,000 Head</i>	<i>1,000 Head</i>	<i>Pounds</i>	<i>Pounds</i>	<i>Million Pounds</i>	<i>Million Pounds</i>	<i>Percent</i>
AL	18	17	14,000	14,412	252	245	-2.8
AK	1.3	1.2	12,846	12,167	16.70	14.60	-12.6
AZ	155	160	22,916	22,788	3,552	3,646	2.6
AR	29	24	12,207	13,250	354	318	-10.2
CA	1,688	1,725	20,993	21,139	35,437	36,465	2.9
CO	100	102	21,530	21,412	2,153	2,184	1.4
CT	22	20	18,773	19,600	413	392	-5.1
DE	8.3	7.4	15,904	17,230	132.0	127.5	-3.4
FL	142	138	15,218	16,326	2,161	2,253	4.3
GA	85	84	16,988	16,857	1,444	1,416	-1.9
HI	6.5	6.1	14,154	13,197	92.0	80.5	-12.5
ID	404	424	21,718	21,446	8,774	9,093	3.6
IL	111	107	18,441	18,486	2,047	1,978	-3.4
IN	149	150	19,725	19,747	2,939	2,962	0.8
IA	201	193	18,955	19,912	3,810	3,843	0.9
KS	111	113	19,189	19,611	2,130	2,216	4.0
KY	116	110	12,629	12,936	1,465	1,423	-2.9
LA	43	38	12,070	12,605	519	479	-7.7
ME	35	34	17,829	18,000	624	612	-1.9
MD	78	74	15,577	15,703	1,215	1,162	-4.4
MA	19	17	17,474	17,412	332	296	-10.8
MI	302	303	21,109	20,842	6,375	6,315	-0.9
MN	473	463	17,459	17,499	8,258	8,102	-1.9
MS	31	27	13,645	14,037	423	379	-10.4
MO	129	122	14,620	15,139	1,886	1,847	-2.1
MT	18	18	19,167	19,278	345	347	0.6
NE	64	61	17,641	17,230	1,129	1,051	-6.9
NV	25	25	19,400	20,360	485	509	4.9
NH	16	16	19,063	18,875	305	302	-1.0
NJ	13	12	16,615	16,667	216	200	-7.4
NM	317	326	21,028	20,583	6,666	6,710	0.7
NY	671	655	17,812	17,786	11,952	11,650	-2.5
NC	61	57	17,115	17,649	1,044	1,006	-3.6
ND	35	34	14,857	15,471	520	526	1.2
OH	260	263	17,269	17,338	4,490	4,560	1.6
OK	82	78	16,000	16,192	1,312	1,263	-3.7
OR	119	120	18,294	18,917	2,177	2,270	4.3
PA	575	562	17,979	17,904	10,338	10,062	-2.7
RI	1.3	1.2	17,000	16,333	22.1	19.6	-11.3
SC	19	17	16,737	16,882	318	287	-9.7
SD	82	80	16,220	16,838	1,330	1,347	1.3
TN	79	75	15,253	15,400	1,205	1,155	-4.1
TX	319	319	17,649	18,837	5,630	6,009	6.7
UT	91	88	17,824	18,284	1,622	1,609	-0.8
VT	149	145	17,698	17,821	2,637	2,584	-2.0
VA	113	105	15,319	16,486	1,731	1,731	0.0
WA	245	237	22,780	22,852	5,581	5,416	-3.0
WV	15	13	14,400	14,923	216	194	-10.2
WI	1,256	1,241	17,728	17,796	22,266	22,085	-0.8
WY	3.8	4.3	14,211	14,744	54.0	63.4	17.4
US ³	9,083	9,010	18,760	18,957	170,394	170,805	0.2
PR ⁴	92	94	8,913	8,277	820	778	-5.1

¹ Average number during year, excluding heifers not yet fresh.

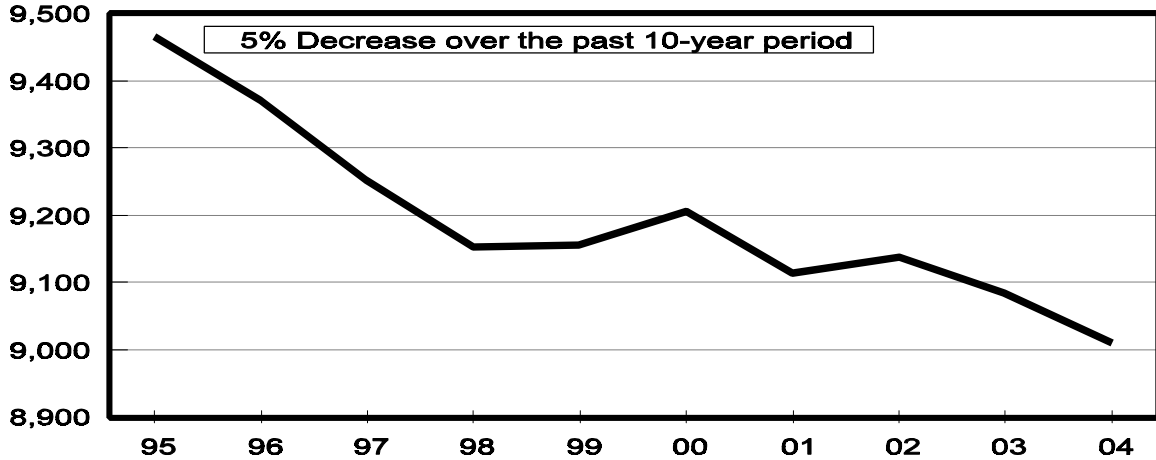
² Excludes milk sucked by calves.

³ May not add due to rounding.

⁴ Puerto Rico is not included in the U.S. total.

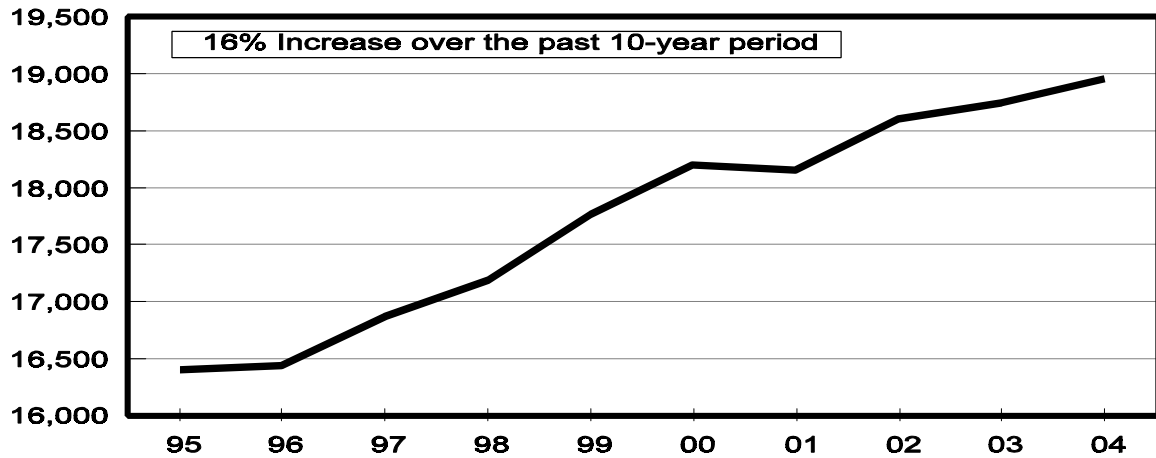
Milk Cows, 1995-2004 United States

Thousand Head



Rate per Cow, 1995-2004 United States

Pounds



Milk Cows: Number by Month, State, 23 State, and United States, 2003 ¹

State	Jan	Feb	Mar	Apr	May	Jun	
	<i>1,000 Head</i>	<i>1,000 Head</i>	<i>1,000 Head</i>	<i>1,000 Head</i>	<i>1,000 Head</i>	<i>1,000 Head</i>	
AZ	155	155	155	155	155	155	
CA	1,672	1,676	1,681	1,685	1,685	1,684	
CO	100	101	101	100	100	100	
FL	147	146	145	144	143	142	
ID	392	394	395	397	400	407	
IL	114	114	113	111	110	110	
IN	146	147	147	148	148	148	
IA	207	204	203	203	203	203	
KS	112	112	112	111	111	111	
KY	120	120	120	120	119	118	
MI	302	302	302	301	301	302	
MN	480	480	480	475	475	475	
MO	134	133	131	130	130	130	
NM	314	314	315	315	315	315	
NY	675	677	680	679	677	675	
OH	260	260	260	261	261	261	
OR	117	117	118	119	120	120	
PA	590	588	585	582	580	578	
TX	320	320	320	320	320	320	
VT	153	152	151	150	149	148	
VA	116	116	116	116	115	115	
WA	248	248	248	248	244	244	
WI	1,265	1,265	1,263	1,260	1,257	1,256	
23-Sts	8,139	8,141	8,141	8,130	8,118	8,117	
US ³	9,143	9,142	9,140	9,121	9,101	9,098	
	Jul	Aug	Sep	Oct	Nov	Dec	Annual Avg. ²
AZ	155	155	155	155	155	155	155
CA	1,690	1,693	1,695	1,698	1,694	1,697	1,688
CO	100	100	100	99	99	99	100
FL	141	140	139	140	140	140	142
ID	408	411	413	412	412	412	404
IL	110	110	109	109	109	109	111
IN	148	152	155	155	151	146	149
IA	201	200	200	198	197	197	201
KS	110	110	110	110	110	110	111
KY	115	112	111	111	112	112	116
MI	304	304	304	304	302	301	302
MN	475	470	470	465	465	465	473
MO	129	128	127	126	125	124	129
NM	316	317	318	318	320	324	317
NY	673	671	668	665	660	657	671
OH	260	260	259	259	258	258	260
OR	120	120	119	118	118	117	119
PA	574	571	566	562	560	562	575
TX	320	320	320	317	317	317	319
VT	148	147	147	147	146	146	149
VA	114	112	111	109	108	106	113
WA	244	244	244	244	243	241	245
WI	1,255	1,254	1,253	1,250	1,249	1,247	1,256
23-Sts	8,110	8,101	8,093	8,071	8,050	8,042	8,104
US ³	9,086	9,069	9,055	9,030	9,006	8,996	9,083

¹ Includes dry cows, excludes heifers not yet fresh.

² Average based on monthly totals.

³ U.S. monthly estimates are derived by proportionally allocating the quarterly estimates using the 23-state monthly total.

Milk Cows: Number by Month, State, 23 State, and United States, 2004 ¹

State	Jan	Feb	Mar	Apr	May	Jun	
	<i>1,000 Head</i>	<i>1,000 Head</i>	<i>1,000 Head</i>	<i>1,000 Head</i>	<i>1,000 Head</i>	<i>1,000 Head</i>	
AZ	155	155	155	155	155	155	
CA	1,701	1,706	1,710	1,716	1,720	1,724	
CO	99	100	100	101	102	103	
FL	140	139	138	138	139	139	
ID	412	412	413	414	417	422	
IL	108	108	108	108	108	108	
IN	145	145	147	149	149	150	
IA	196	195	195	195	195	194	
KS	111	112	113	113	114	115	
KY	112	111	110	109	110	112	
MI	300	299	301	301	301	302	
MN	465	465	465	465	460	460	
MO	125	124	123	124	124	124	
NM	325	326	327	327	327	328	
NY	658	660	660	658	655	656	
OH	258	259	260	261	263	265	
OR	118	119	120	120	120	120	
PA	563	564	564	561	557	557	
TX	317	317	317	317	317	320	
VT	146	145	145	145	145	145	
VA	105	105	105	105	105	105	
WA	240	240	239	239	239	238	
WI	1,245	1,245	1,244	1,242	1,242	1,241	
23-Sts	8,044	8,051	8,059	8,063	8,064	8,083	
US ³	8,985	8,993	9,002	8,999	8,991	9,014	
	Jul	Aug	Sep	Oct	Nov	Dec	Annual Avg. ²
AZ	158	163	165	167	168	166	160
CA	1,729	1,733	1,737	1,740	1,741	1,741	1,725
CO	103	103	103	103	103	102	102
FL	139	138	137	137	137	138	138
ID	427	431	431	434	434	435	424
IL	107	107	107	106	106	106	107
IN	150	149	150	152	154	155	150
IA	193	192	191	191	190	188	193
KS	115	115	115	114	112	111	113
KY	111	110	109	109	109	110	110
MI	303	303	303	304	306	307	303
MN	465	465	465	460	460	460	463
MO	122	121	121	120	120	119	122
NM	328	327	325	323	322	321	326
NY	656	654	654	653	651	650	655
OH	265	266	266	266	266	266	263
OR	120	120	120	120	120	120	120
PA	559	560	562	563	563	565	562
TX	320	320	320	320	320	319	319
VT	145	145	145	145	144	143	145
VA	104	104	104	104	104	104	105
WA	237	236	235	234	235	235	237
WI	1,240	1,240	1,239	1,238	1,237	1,236	1,241
23-Sts	8,096	8,102	8,104	8,103	8,102	8,097	8,081
US ³	9,028	9,029	9,025	9,023	9,021	9,013	9,010

¹ Includes dry cows, excludes heifers not yet fresh.

² Average based on monthly totals.

³ U.S. monthly estimates are derived by proportionally allocating the quarterly estimates using the 23-state monthly total.

**Milk Produced per Cow: by Month,
State, 23 States, and United States, 2003 ¹**

State	Jan	Feb	Mar	Apr	May	Jun	
	<i>Pounds</i>	<i>Pounds</i>	<i>Pounds</i>	<i>Pounds</i>	<i>Pounds</i>	<i>Pounds</i>	
AZ	2,020	1,895	2,140	2,110	2,140	1,980	
CA	1,790	1,655	1,850	1,800	1,835	1,765	
CO	1,890	1,700	1,830	1,810	1,840	1,800	
FL	1,360	1,290	1,435	1,415	1,385	1,290	
ID	1,800	1,650	1,850	1,800	1,870	1,840	
IL	1,580	1,485	1,670	1,610	1,650	1,525	
IN	1,710	1,525	1,720	1,685	1,700	1,610	
IA	1,595	1,480	1,640	1,610	1,640	1,580	
KS	1,660	1,530	1,670	1,660	1,695	1,550	
KY	1,115	1,000	1,135	1,140	1,125	1,015	
MI	1,770	1,595	1,805	1,730	1,790	1,750	
MN	1,520	1,385	1,540	1,500	1,530	1,465	
MO	1,240	1,150	1,340	1,325	1,345	1,220	
NM	1,720	1,605	1,835	1,810	1,890	1,795	
NY	1,515	1,400	1,540	1,505	1,570	1,500	
OH	1,445	1,360	1,500	1,490	1,560	1,450	
OR	1,495	1,345	1,610	1,555	1,590	1,535	
PA	1,540	1,430	1,600	1,575	1,600	1,480	
TX	1,505	1,410	1,610	1,600	1,600	1,470	
VT	1,495	1,370	1,535	1,495	1,565	1,500	
VA	1,365	1,235	1,360	1,355	1,370	1,235	
WA	1,910	1,750	1,950	1,895	1,975	1,910	
WI	1,500	1,370	1,530	1,480	1,540	1,505	
23-Sts	1,619	1,491	1,669	1,630	1,674	1,599	
US ²	1,596	1,471	1,646	1,605	1,650	1,576	
	Jul	Aug	Sep	Oct	Nov	Dec	Annual Avg.
AZ	1,825	1,670	1,665	1,750	1,795	1,920	22,916
CA	1,755	1,755	1,670	1,720	1,665	1,740	20,993
CO	1,820	1,830	1,740	1,750	1,710	1,830	21,530
FL	1,215	1,120	1,020	1,105	1,180	1,355	15,218
ID	1,880	1,860	1,780	1,820	1,740	1,800	21,718
IL	1,490	1,480	1,420	1,495	1,485	1,585	18,441
IN	1,625	1,610	1,575	1,655	1,600	1,670	19,725
IA	1,600	1,560	1,500	1,550	1,525	1,640	18,955
KS	1,545	1,555	1,500	1,590	1,600	1,685	19,189
KY	1,005	975	975	1,035	1,035	1,070	12,629
MI	1,835	1,805	1,755	1,795	1,675	1,765	21,109
MN	1,455	1,420	1,355	1,410	1,390	1,485	17,459
MO	1,150	1,125	1,090	1,200	1,190	1,250	14,620
NM	1,795	1,750	1,705	1,745	1,670	1,730	21,028
NY	1,515	1,475	1,430	1,455	1,410	1,480	17,812
OH	1,450	1,420	1,380	1,420	1,370	1,440	17,269
OR	1,585	1,565	1,505	1,535	1,470	1,570	18,294
PA	1,500	1,480	1,415	1,455	1,420	1,480	17,979
TX	1,395	1,310	1,305	1,420	1,440	1,575	17,649
VT	1,505	1,470	1,430	1,450	1,415	1,505	17,698
VA	1,210	1,190	1,175	1,245	1,260	1,335	15,319
WA	1,965	1,960	1,865	1,890	1,810	1,900	22,780
WI	1,515	1,495	1,430	1,465	1,410	1,485	17,728
23-Sts	1,601	1,575	1,515	1,564	1,520	1,601	19,058
US ²	1,570	1,546	1,488	1,539	1,496	1,576	18,760

¹ Excludes milk sucked by calves.

² U.S. monthly estimates are derived by proportionally allocating the quarterly estimates using the 23-state monthly total.

**Milk Produced per Cow: by Month,
State, 23 States and United States, 2004 ¹**

State	Jan	Feb	Mar	Apr	May	Jun	
	<i>Pounds</i>	<i>Pounds</i>	<i>Pounds</i>	<i>Pounds</i>	<i>Pounds</i>	<i>Pounds</i>	
AZ	2,010	1,960	2,120	2,090	2,095	1,955	
CA	1,760	1,675	1,815	1,790	1,830	1,755	
CO	1,830	1,680	1,830	1,800	1,830	1,750	
FL	1,435	1,415	1,550	1,515	1,525	1,395	
ID	1,800	1,660	1,780	1,770	1,850	1,800	
IL	1,610	1,520	1,650	1,580	1,620	1,540	
IN	1,695	1,565	1,820	1,750	1,800	1,650	
IA	1,680	1,590	1,730	1,700	1,760	1,630	
KS	1,695	1,545	1,680	1,675	1,710	1,635	
KY	1,090	1,035	1,175	1,155	1,190	1,055	
MI	1,780	1,660	1,810	1,745	1,795	1,755	
MN	1,505	1,415	1,510	1,480	1,555	1,480	
MO	1,265	1,185	1,345	1,370	1,380	1,250	
NM	1,760	1,660	1,765	1,730	1,810	1,755	
NY	1,490	1,400	1,510	1,500	1,580	1,490	
OH	1,450	1,370	1,510	1,500	1,540	1,440	
OR	1,565	1,475	1,560	1,590	1,665	1,615	
PA	1,500	1,425	1,570	1,550	1,605	1,495	
TX	1,660	1,585	1,735	1,705	1,720	1,570	
VT	1,515	1,435	1,530	1,485	1,545	1,495	
VA	1,410	1,320	1,465	1,450	1,455	1,350	
WA	1,895	1,790	1,945	1,905	1,985	1,920	
WI	1,505	1,405	1,510	1,485	1,560	1,485	
23-Sts	1,624	1,531	1,661	1,636	1,692	1,607	
US ²	1,603	1,512	1,640	1,613	1,670	1,586	
	Jul	Aug	Sep	Oct	Nov	Dec	Annual Avg.
AZ	1,810	1,710	1,660	1,785	1,760	1,905	22,788
CA	1,780	1,775	1,715	1,770	1,700	1,775	21,139
CO	1,760	1,835	1,750	1,785	1,760	1,845	21,412
FL	1,340	1,225	1,025	1,165	1,250	1,450	16,326
ID	1,860	1,850	1,780	1,800	1,720	1,800	21,446
IL	1,520	1,490	1,440	1,480	1,450	1,540	18,486
IN	1,640	1,620	1,540	1,585	1,540	1,600	19,747
IA	1,660	1,640	1,580	1,640	1,610	1,700	19,912
KS	1,625	1,600	1,550	1,590	1,580	1,680	19,611
KY	1,065	1,045	990	1,035	1,030	1,055	12,936
MI	1,790	1,755	1,670	1,730	1,660	1,730	20,842
MN	1,460	1,440	1,365	1,425	1,390	1,475	17,499
MO	1,240	1,210	1,150	1,230	1,215	1,270	15,139
NM	1,770	1,740	1,670	1,690	1,605	1,650	20,583
NY	1,520	1,500	1,420	1,470	1,410	1,485	17,786
OH	1,450	1,430	1,370	1,410	1,390	1,450	17,338
OR	1,660	1,615	1,565	1,575	1,490	1,570	18,917
PA	1,510	1,475	1,415	1,465	1,420	1,490	17,904
TX	1,540	1,465	1,405	1,470	1,455	1,555	18,837
VT	1,525	1,495	1,430	1,455	1,415	1,515	17,821
VA	1,370	1,335	1,290	1,355	1,340	1,420	16,486
WA	1,965	1,910	1,870	1,895	1,825	1,925	22,852
WI	1,520	1,510	1,440	1,475	1,415	1,490	17,796
23-Sts	1,623	1,601	1,533	1,583	1,531	1,610	19,232
US ²	1,596	1,574	1,509	1,559	1,509	1,587	18,957

¹ Excludes milk sucked by calves.

² U.S. monthly estimates are derived by proportionally allocating the quarterly estimates using the 23-state monthly total.

**Milk Production: Total by Month, State,
23 States, and United States, 2003¹**

State	Jan	Feb	Mar	Apr	May	Jun	
	<i>Million Pounds</i>	<i>Million Pounds</i>	<i>Million Pounds</i>	<i>Million Pounds</i>	<i>Million Pounds</i>	<i>Million Pounds</i>	
AZ	313	294	332	327	332	307	
CA	2,993	2,774	3,110	3,033	3,092	2,972	
CO	189	172	185	181	184	180	
FL	200	188	208	204	198	183	
ID	706	650	731	715	748	749	
IL	180	169	189	179	182	168	
IN	250	224	253	249	252	238	
IA	330	302	333	327	333	321	
KS	186	171	187	184	188	172	
KY	134	120	136	137	134	120	
MI	535	482	545	521	539	529	
MN	730	665	739	713	727	696	
MO	166	153	176	172	175	159	
NM	540	504	578	570	595	565	
NY	1,023	948	1,047	1,022	1,063	1,013	
OH	376	354	390	389	407	378	
OR	175	157	190	185	191	184	
PA	909	841	936	917	928	855	
TX	482	451	515	512	512	470	
VT	229	208	232	224	233	222	
VA	158	143	158	157	158	142	
WA	474	434	484	470	482	466	
WI	1,898	1,733	1,932	1,865	1,936	1,890	
23-Sts	13,176	12,137	13,586	13,253	13,589	12,979	
US ³	14,595	13,444	15,048	14,642	15,014	14,340	
	Jul	Aug	Sep	Oct	Nov	Dec	Annual Total ²
AZ	283	259	258	271	278	298	3,552
CA	2,966	2,971	2,831	2,921	2,821	2,953	35,437
CO	182	183	174	173	169	181	2,153
FL	171	157	142	155	165	190	2,161
ID	767	764	735	750	717	742	8,774
IL	164	163	155	163	162	173	2,047
IN	241	245	244	257	242	244	2,939
IA	322	312	300	307	300	323	3,810
KS	170	171	165	175	176	185	2,130
KY	116	109	108	115	116	120	1,465
MI	558	549	534	546	506	531	6,375
MN	691	667	637	656	646	691	8,258
MO	148	144	138	151	149	155	1,886
NM	567	555	542	555	534	561	6,666
NY	1,020	990	955	968	931	972	11,952
OH	377	369	357	368	353	372	4,490
OR	190	188	179	181	173	184	2,177
PA	861	845	801	818	795	832	10,338
TX	446	419	418	450	456	499	5,630
VT	223	216	210	213	207	220	2,637
VA	138	133	130	136	136	142	1,731
WA	479	478	455	461	440	458	5,581
WI	1,901	1,875	1,792	1,831	1,761	1,852	22,266
23-Sts	12,981	12,762	12,260	12,621	12,233	12,878	154,455
US ³	14,264	14,024	13,473	13,898	13,471	14,181	170,394

¹ Excludes milk sucked by calves.

² Total milk production for year.

³ U.S. monthly estimates are derived by proportionally allocating the quarterly estimates using the 23-state monthly total.

**Milk Production: Total by Month, State,
23 States, and United States, 2004¹**

State	Jan	Feb	Mar	Apr	May	Jun	
	<i>Million Pounds</i>	<i>Million Pounds</i>	<i>Million Pounds</i>	<i>Million Pounds</i>	<i>Million Pounds</i>	<i>Million Pounds</i>	
AZ	312	304	329	324	325	303	
CA	2,994	2,858	3,104	3,072	3,148	3,026	
CO	181	168	183	182	187	180	
FL	201	197	214	209	212	194	
ID	742	684	735	733	771	760	
IL	174	164	178	171	175	166	
IN	246	227	268	261	268	248	
IA	329	310	337	332	343	316	
KS	188	173	190	189	195	188	
KY	122	115	129	126	131	118	
MI	534	496	545	525	540	530	
MN	700	658	702	688	715	681	
MO	158	147	165	170	171	155	
NM	572	541	577	566	592	576	
NY	980	924	997	987	1,035	977	
OH	374	355	393	392	405	382	
OR	185	176	187	191	200	194	
PA	845	804	885	870	894	833	
TX	526	502	550	540	545	502	
VT	221	208	222	215	224	217	
VA	148	139	154	152	153	142	
WA	455	430	465	455	474	457	
WI	1,874	1,749	1,878	1,844	1,938	1,843	
23-Sts	13,061	12,329	13,387	13,194	13,641	12,988	
US ³	14,402	13,595	14,762	14,519	15,012	14,293	
	Jul	Aug	Sep	Oct	Nov	Dec	Annual Total ²
AZ	286	279	274	298	296	316	3,646
CA	3,078	3,076	2,979	3,080	2,960	3,090	36,465
CO	181	189	180	184	181	188	2,184
FL	186	169	140	160	171	200	2,253
ID	794	797	767	781	746	783	9,093
IL	163	159	154	157	154	163	1,978
IN	246	241	231	241	237	248	2,962
IA	320	315	302	313	306	320	3,843
KS	187	184	178	181	177	186	2,216
KY	118	115	108	113	112	116	1,423
MI	542	532	506	526	508	531	6,315
MN	679	670	635	656	639	679	8,102
MO	151	146	139	148	146	151	1,847
NM	581	569	543	546	517	530	6,710
NY	997	981	929	960	918	965	11,650
OH	384	380	364	375	370	386	4,560
OR	199	194	188	189	179	188	2,270
PA	844	826	795	825	799	842	10,062
TX	493	469	450	470	466	496	6,009
VT	221	217	207	211	204	217	2,584
VA	142	139	134	141	139	148	1,731
WA	466	451	439	443	429	452	5,416
WI	1,885	1,872	1,784	1,826	1,750	1,842	22,085
23-Sts	13,143	12,970	12,426	12,824	12,404	13,037	155,404
US ³	14,405	14,215	13,619	14,070	13,610	14,303	170,805

¹ Excludes milk sucked by calves.

² Total milk production for year.

³ U.S. monthly estimates are derived by proportionally allocating the quarterly estimates using the 23-state monthly total.

**Milk Cows and Production: Number and Milk Produced
by Quarter, State, and United States, 2003**

State	Milk Cows ¹				Milk Production ²			
	Jan-Mar	Apr-Jun	Jul-Sep	Oct-Dec	Jan-Mar	Apr-Jun	Jul-Sep	Oct-Dec
	<i>1,000 Head</i>	<i>1,000 Head</i>	<i>1,000 Head</i>	<i>1,000 Head</i>	<i>Million Pounds</i>	<i>Million Pounds</i>	<i>Million Pounds</i>	<i>Million Pounds</i>
AL	18	18	18	18	70	69	53	60
AK	1.3	1.3	1.2	1.2	4.30	4.50	4.40	3.50
AZ	155	155	155	155	939	966	800	847
AR	30	29	28	27	96	97	81	80
CA	1,676	1,685	1,693	1,696	8,877	9,097	8,768	8,695
CO	101	100	100	99	546	545	539	523
CT	23	22	22	21	109	106	99	99
DE	8.5	8.5	8.0	8.0	37.0	36.0	29.0	30.0
FL	146	143	140	140	596	585	470	510
GA	85	85	85	84	399	389	319	337
HI	6.6	6.4	6.5	6.6	24.0	24.3	22.6	21.1
ID	394	401	411	412	2,087	2,212	2,266	2,209
IL	114	110	110	109	538	529	482	498
IN	147	148	152	151	727	739	730	743
IA	205	203	200	197	965	981	934	930
KS	112	111	110	110	544	544	506	536
KY	120	119	113	112	390	391	333	351
LA	44	43	42	41	149	143	109	118
ME	35	35	35	34	155	161	157	151
MD	79	78	77	77	319	318	285	293
MA	20	20	18	18	88	89	79	76
MI	302	301	304	302	1,562	1,589	1,641	1,583
MN	480	475	472	465	2,134	2,136	1,995	1,993
MS	32	31	30	29	122	118	87	96
MO	133	130	128	125	495	506	430	455
MT	18	18	18	18	86	87	87	85
NE	66	65	63	62	297	294	268	270
NV	25	25	25	25	122	120	123	120
NH	17	16	16	16	79	79	74	73
NJ	13	13	12	12	57	57	52	50
NM	314	315	317	321	1,622	1,730	1,664	1,650
NY	677	677	671	661	3,018	3,098	2,965	2,871
NC	62	61	60	59	279	272	243	250
ND	36	35	34	34	133	133	128	126
OH	260	261	260	258	1,120	1,174	1,103	1,093
OK	83	82	81	81	336	337	319	320
OR	117	120	120	118	522	560	557	538
PA	588	580	570	561	2,686	2,700	2,507	2,445
RI	1.4	1.3	1.3	1.3	5.8	5.9	5.3	5.1
SC	20	19	18	18	95	87	64	72
SD	84	83	82	80	333	339	332	326
TN	82	80	78	77	325	325	270	285
TX	320	320	320	317	1,448	1,494	1,283	1,405
UT	92	92	90	90	399	413	405	405
VT	152	149	147	146	669	679	649	640
VA	116	115	112	108	459	457	401	414
WA	248	245	244	243	1,392	1,418	1,412	1,359
WV	15	15	14	14	56	58	50	52
WI	1,264	1,258	1,254	1,249	5,563	5,691	5,568	5,444
WY	3.9	3.8	3.7	3.9	13.3	13.3	13.0	14.4
US ³	9,142	9,107	9,070	9,011	43,087	43,996	41,761	41,550

¹ Quarterly average includes dry cows, excludes heifers not yet fresh.

² Excludes milk sucked by calves.

³ May not add due to rounding.

**Milk Cows and Production: Number and Milk Produced
by Quarter, State, and United States, 2004**

State	Milk Cows ¹				Milk Production ²			
	Jan-Mar	Apr-Jun	Jul-Sep	Oct-Dec	Jan-Mar	Apr-Jun	Jul-Sep	Oct-Dec
	<i>1,000 Head</i>	<i>1,000 Head</i>	<i>1,000 Head</i>	<i>1,000 Head</i>	<i>Million Pounds</i>	<i>Million Pounds</i>	<i>Million Pounds</i>	<i>Million Pounds</i>
AL	17	17	17	17	71	66	52	56
AK	1.2	1.2	1.2	1.2	3.60	3.80	3.80	3.40
AZ	155	155	162	167	945	952	839	910
AR	25	24	24	23	86	85	74	73
CA	1,706	1,720	1,733	1,741	8,956	9,246	9,133	9,130
CO	100	102	103	103	532	549	550	553
CT	21	20	20	20	102	100	95	95
DE	7.5	7.5	7.0	7.5	34.0	33.0	29.0	31.5
FL	139	139	138	137	612	615	495	531
GA	84	84	84	84	381	382	319	334
HI	6.5	6.2	6.0	5.8	21.9	22.2	19.0	17.4
ID	412	418	430	434	2,161	2,264	2,358	2,310
IL	108	108	107	106	516	512	476	474
IN	146	149	150	154	741	777	718	726
IA	195	195	192	190	976	991	937	939
KS	112	114	115	112	551	572	549	544
KY	111	110	110	109	366	375	341	341
LA	40	38	37	36	139	131	101	108
ME	34	34	34	33	151	157	156	148
MD	76	75	73	73	300	300	277	285
MA	17	17	17	17	74	76	73	73
MI	300	301	303	306	1,575	1,595	1,580	1,565
MN	465	462	465	460	2,060	2,084	1,984	1,974
MS	28	27	27	26	109	104	80	86
MO	124	124	121	120	470	496	436	445
MT	18	18	18	18	85	88	88	86
NE	61	60	61	61	267	266	254	264
NV	25	25	25	25	127	125	129	128
NH	16	16	16	16	76	78	74	74
NJ	12	12	12	12	52	52	49	47
NM	326	327	327	322	1,690	1,734	1,693	1,593
NY	659	656	655	651	2,901	2,999	2,907	2,843
NC	58	57	56	55	264	259	241	242
ND	33	34	34	33	129	136	134	127
OH	259	263	266	266	1,122	1,179	1,128	1,131
OK	80	79	77	75	330	329	307	297
OR	119	120	120	120	548	585	581	556
PA	564	558	560	564	2,534	2,597	2,465	2,466
RI	1.2	1.2	1.1	1.1	5.2	5.2	4.7	4.5
SC	17	17	17	18	79	76	63	69
SD	80	81	80	80	333	343	333	338
TN	77	76	75	73	310	310	265	270
TX	317	318	320	320	1,578	1,587	1,412	1,432
UT	88	87	88	89	387	409	416	397
VT	145	145	145	144	651	656	645	632
VA	105	105	104	104	441	447	415	428
WA	240	239	236	235	1,350	1,386	1,356	1,324
WV	13	13	13	13	50	49	47	48
WI	1,245	1,242	1,240	1,237	5,501	5,625	5,541	5,418
WY	4.1	4.2	4.3	4.4	14.8	16.0	16.3	16.3
US ³	8,993	9,001	9,027	9,019	42,759	43,824	42,239	41,983

¹ Quarterly average includes dry cows, excludes heifers not yet fresh.

² Excludes milk sucked by calves.

³ May not add due to rounding.

**Number of Operations with Milk Cows and Number of Licensed Dairy Herds,
by State, United States, and Puerto Rico, 2003-2004**

State	2003		2004	
	Operations with Milk Cows ¹	Licensed Dairy Herds ²	Operations with Milk Cows ¹	Licensed Dairy Herds ²
	<i>Number</i>	<i>Number</i>	<i>Number</i>	<i>Number</i>
AL	200	110	190	100
AK	30	10	30	10
AZ	240	160	230	150
AR	450	290	400	250
CA	2,400	2,060	2,300	2,030
CO	700	180	670	170
CT	280	200	250	180
DE	100	90	90	90
FL	510	190	500	190
GA	640	360	630	330
HI	30	10	30	10
ID	900	775	900	755
IL	1,600	1,295	1,500	1,210
IN	2,400	2,010	2,300	1,900
IA	3,000	2,500	2,600	2,420
KS	1,000	530	950	490
KY	2,500	1,630	2,300	1,435
LA	450	340	420	310
ME	510	400	500	390
MD	850	715	850	670
MA	300	230	270	220
MI	3,000	2,840	2,900	2,680
MN	6,600	6,235	6,100	5,810
MS	440	270	390	250
MO	3,100	1,980	2,800	1,840
MT	600	110	600	110
NE	900	500	830	450
NV	120	30	120	30
NH	230	150	210	140
NJ	170	130	160	130
NM	450	170	450	170
NY	7,100	6,700	6,900	6,630
NC	820	395	800	375
ND	650	440	600	400
OH	4,700	3,960	4,500	3,780
OK	1,500	420	1,400	400
OR	800	350	780	350
PA	9,600	9,130	9,100	8,720
RI	30	20	30	20
SC	210	120	200	110
SD	1,100	780	1,000	700
TN	1,300	820	1,200	760
TX	1,800	850	1,700	810
UT	640	365	600	360
VT	1,400	1,390	1,300	1,280
VA	1,500	910	1,400	850
WA	850	640	820	620
WV	500	150	480	140
WI	16,900	16,400	15,900	15,570
WY	260	35	260	35
US	86,360	70,375	81,440	66,830
PR ³	1,600	365	1,600	360

¹ An operation is any place having one or more head of milk cows, excluding cows used to nurse calves, on hand at any time during the year.

² Average number of dairy farms licensed to sell milk, based on counts collected from State and other regulatory agencies.

³ Puerto Rico is not included in the U.S. total.

Reliability Statement

Survey Procedures: Primary data used to determine these estimates were obtained from a sample of producers. Individual States maintain a list of all known milk producers and information on the size of their herd. States use all known sources of producers to ensure that their lists are as complete as possible. Generally, all large producers and a sample of small producers are included in the survey. Questionnaires are mailed to producers near the end of the month to obtain data for the first day of the month. Additional reports are obtained by telephone, as needed, to supplement the mail response. Where feasible, States utilize state and federal administrative data, rather than conduct a monthly or quarterly survey, to estimate milk production. This eliminates duplication of data gathering by different government agencies. Indications of milk cow inventory are also obtained in the January and July Cattle Surveys.

Estimation Procedures: State offices prepare these estimates by using a combination of survey indications, historic trends, and any available administrative data. Individual State estimates are reviewed by the Agricultural Statistics Board for reasonableness.

Revision Policy: Milk production, rate per cow, and number of cows are subject to revision the following month for monthly States or the following quarter for the quarterly States. Normally, Federal Market Order sales are the main basis for revisions. However, data for all orders are not available in time for this revision. Estimates are again subject to revisions in February each year based on additional administrative data. In the event that additional changes are necessary, a third revision is possible in February the following year. Estimates are again reviewed after data from the five-year Census of Agriculture are available. No revisions are made after that date.

Reliability: Since all operations with dairy animals are not included in the sample, survey estimates are subject to sampling variability. Survey results are also subject to non-sampling errors such as omissions, duplications, and mistakes in reporting, recording, and processing the data. The effects of these errors cannot be measured directly. They are minimized through rigid quality controls in the data collection process and through a careful review of all reported data for consistency and reasonableness.

To assist users in evaluating the reliability of the estimates in this report, the "Root Mean Square Error" is shown for selected items on the next page. The "Root Mean Square Error" is a statistical measure based on past performance and is computed using the differences between first and final estimates. The "Root Mean Square Error" for milk cow inventory estimates over the past 10 October-December quarters is 0.4 percent. This means that chances are 2 out of 3 that the final October-December estimate will not be above or below the current estimate of 9.02 million head by more than 0.4 percent. Chances are 9 out of 10 that the difference will not exceed 0.7 percent.

Reliability of October-December Milk Estimates ¹

Item	Root Mean Square Error	90% Confidence Level		Difference Between First and Latest Estimates			Quarters	
				Average	Smallest	Largest	First Above Latest	First Below Latest
				<i>Million Pounds</i>	<i>Million Pounds</i>	<i>Million Pounds</i>	<i>Number</i>	<i>Number</i>
Milk Production	<i>Percent</i> 0.4	<i>Percent</i> 0.8	<i>Million Pounds</i> 336	<i>Million Pounds</i> 147	<i>Million Pounds</i> 1	<i>Million Pounds</i> 265	<i>Number</i> 6	<i>Number</i> 4
All Milk Cows	<i>Percent</i> 0.4	<i>Percent</i> 0.7	<i>1,000 Head</i> 63	<i>1,000 Head</i> 22	<i>1,000 Head</i> 1	<i>1,000 Head</i> 73	<i>Number</i> 7	<i>Number</i> 3

¹ Based on records for the past 10 October-December quarters.

Index

Page

Estimated Milk Cows and Production: by Month, United States	2
Milk Cows and Production: by Month, 20 Selected States	2
Milk Cows and Production: by Quarter, United States	2
Milk Cows and Production: by State, January	3
Milk Cows and Production: by State, December	4
Milk Cows and Production: by State, United States, and Puerto Rico	6
Milk Cows and Production: United States, 1995-2004	5
Milk Cows: Number by Month, State, and 20 States, 2003	8
Milk Cows: Number by Month, State, and 20 States, 2004	9
Milk Produced per Cow: by Month, State, and 20 States, 2003	10
Milk Produced per Cow: by Month, State, and 20 States, 2004	11
Milk Production: Total by Month, State, and 20 States, 2003	12
Milk Production: Total by Month, State, and 20 States, 2004	13
Milk Cows and Production: Number and Milk Produced by Quarter, State, and United States, 2003	14
Milk Cows and Production: Number and Milk Produced by Quarter, State, and United States, 2004	15
Number of Operations with Milk Cows and Number of Licensed Dairy Herds by State, United States, and Puerto Rico, 2003-2004	16
Reliability Statement: Survey and Estimation Procedures, Revision Policy, and Reliability	17

ACCESS TO REPORTS!!

For your convenience, there are several ways to obtain NASS reports, data products, and services:

INTERNET ACCESS

All NASS reports are available free of charge on the worldwide Internet. For access, connect to the Internet and go to the NASS Home Page at: www.usda.gov/nass/. Select "Today's Reports" or Publications and then Reports Calendar or Publications and then Search, by Title or Subject.

E-MAIL SUBSCRIPTION

All NASS reports are available by subscription free of charge direct to your e-mail address. Starting with the NASS Home Page at www.usda.gov/nass/, click on **Publications**, then click on the **Subscribe by E-mail** button which takes you to the page describing e-mail delivery of reports. Finally, click on **Go to the Subscription Page** and follow the instructions.

PRINTED REPORTS OR DATA PRODUCTS

CALL OUR TOLL-FREE ORDER DESK: 800-999-6779 (U.S. and Canada)
Other areas, please call 703-605-6220 FAX: 703-605-6900
(Visa, MasterCard, check, or money order acceptable for payment.)

ASSISTANCE

For **assistance** with general agricultural statistics or further information about NASS or its products or services, contact the **Agricultural Statistics Hotline** at **800-727-9540**, 7:30 a.m. to 4:00 p.m. ET, or e-mail: nass@nass.usda.gov.

The United States Department of Agriculture (USDA) prohibits discrimination in all its programs on the basis of race, color, national origin, gender, religion, age, disability, political beliefs, sexual orientation, and marital or family status. (Not all prohibited bases apply to all programs.) Persons with disabilities who require alternative means for communication of program information (braille, large print, audiotape, etc.) should contact the USDA's TARGET Center at 202-720-2600 (voice and TDD).

To file a complaint of discrimination, write USDA, Director, Office of Civil Rights, Room 326-W, Whitten Building, 1400 Independence Avenue, SW, Washington, D.C., 20250-9410, or call 202-720-5964 (voice or TDD). USDA is an equal opportunity provider and employer.