

Released March 16, 2005, by the National Agricultural Statistics Service (NASS), Agricultural Statistics Board, U.S. Department of Agriculture. For information on *Milk Production* call Ty Kalas at 202-690-3236, office hours 7:30 a.m. to 4:00 p.m. ET.

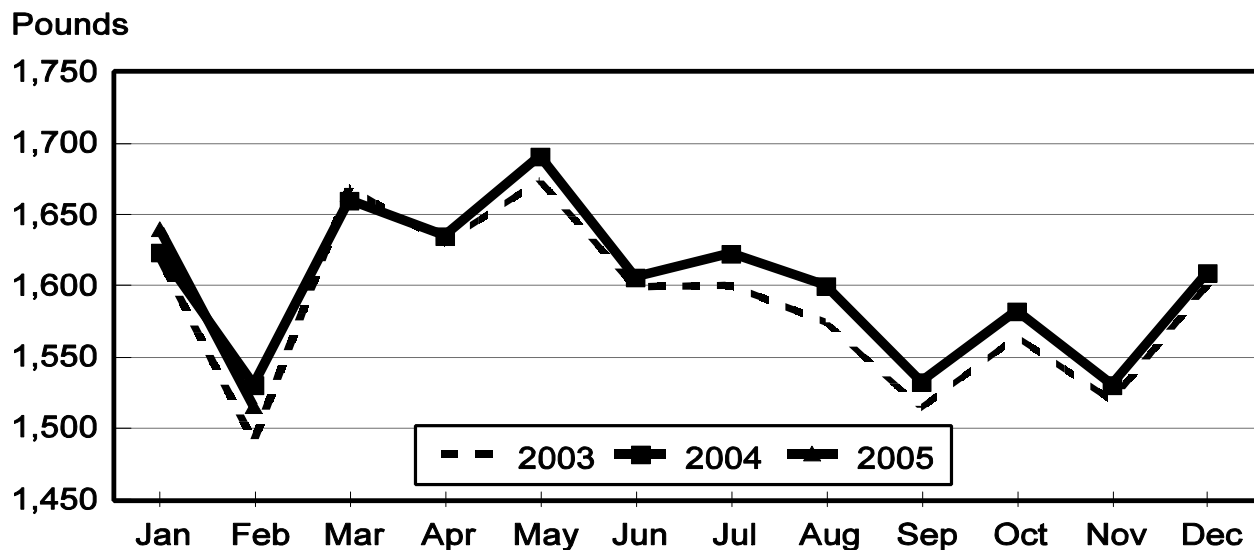
February Milk Production Down 0.7 Percent

Milk production in the 23 major States during February totaled 12.2 billion pounds, down 0.7 percent from February 2004. However, production was 2.8 percent above last year after adjusting for the leap year. January revised production, at 13.3 billion pounds, was up 1.5 percent from January 2004. The January revision represented an increase of 0.2 percent or 29 million pounds from last month's preliminary production estimate.

Production per cow in the 23 major States averaged 1,516 pounds for February, 15 pounds below February 2004.

The number of milk cows on farms in the 23 major States was 8.07 million head, 23,000 head more than February 2004, but 9,000 head less than January 2005.

Monthly Milk per Cow 23 States



Milk Cows and Production: By Quarter, United States, 2004-2005 ¹

Quarter	Milk Cows ²		Milk Per Cow ³		Milk Production ³		
	2004	2005	2004	2005	2004	2005	Change From 2004
	<i>1,000 Head</i>	<i>1,000 Head</i>	<i>Pounds</i>	<i>Pounds</i>	<i>Million Pounds</i>	<i>Million Pounds</i>	<i>Percent</i>
Jan-Mar	8,993		4,755		42,759		
Apr-Jun	9,001		4,869		43,824		
Jul-Sep	9,027		4,679		42,239		
Oct-Dec	9,019		4,655		41,983		
Annual	9,010		18,957		170,805		

¹ May not add due to rounding.

² Includes dry cows, excludes heifers not yet fresh.

³ Excludes milk sucked by calves.

Milk Cows and Production: By Month, 23 Selected States, 2004-2005 ¹

	Milk Cows ²		Milk Per Cow ³		Milk Production ³		
	2004	2005	2004	2005	2004	2005	Change From 2004
	<i>1,000 Head</i>	<i>1,000 Head</i>	<i>Pounds</i>	<i>Pounds</i>	<i>Million Pounds</i>	<i>Million Pounds</i>	<i>Percent</i>
Jan	8,044	8,083	1,624	1,640	13,061	13,258	1.5
Feb	8,051	8,074	1,531	1,516	12,329	12,240	-0.7
Mar	8,059		1,661		13,387		
Apr	8,063		1,636		13,194		
May	8,064		1,692		13,641		
Jun	8,083		1,607		12,988		
Jul	8,096		1,623		13,143		
Aug	8,102		1,601		12,970		
Sep	8,104		1,533		12,426		
Oct	8,103		1,583		12,824		
Nov	8,102		1,531		12,404		
Dec	8,097		1,610		13,037		
Annual	8,081		19,232		155,404		

¹ 2005 revised.

² Includes dry cows, excludes heifers not yet fresh.

³ Excludes milk sucked by calves.

Estimated Milk Cows and Production: By Month, United States, 2003-2004 ¹

Month	Milk Cows ²		Milk Per Cow ³		Milk Production ³		
	2004	2005	2004	2005	2004	2005	Change From 2004
	<i>1,000 Head</i>	<i>1,000 Head</i>	<i>Pounds</i>	<i>Pounds</i>	<i>Million Pounds</i>	<i>Million Pounds</i>	<i>Percent</i>
Jan	8,985	8,993	1,603	1,620	14,402	14,570	1.2
Feb	8,993	8,980	1,512	1,498	13,595	13,450	-1.1
Mar	9,002		1,640		14,762		
Apr	8,999		1,613		14,519		
May	8,991		1,670		15,012		
Jun	9,014		1,586		14,293		
Jul	9,028		1,596		14,405		
Aug	9,029		1,574		14,215		
Sep	9,025		1,509		13,619		
Oct	9,023		1,559		14,070		
Nov	9,021		1,509		13,610		
Dec	9,013		1,587		14,303		
Annual	9,010		18,957		170,805		

¹ 2005 revised.

² Includes dry cows, excludes heifers not yet fresh.

³ Excludes milk sucked by calves.

Milk Cows and Production: By State, February 2004-2005

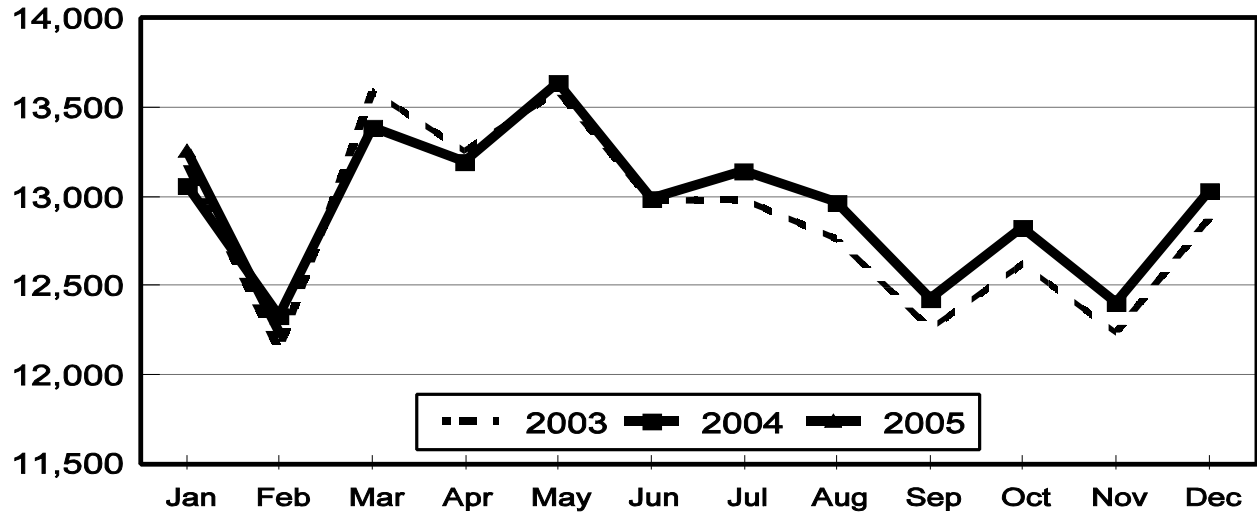
State	Milk Cows ¹		Milk Per Cow ²		Milk Production ²		
	2004	2005	2004	2005	2004	2005	Change From 2004
	<i>1,000 Head</i>	<i>1,000 Head</i>	<i>Pounds</i>	<i>Pounds</i>	<i>Million Pounds</i>	<i>Million Pounds</i>	<i>Percent</i>
AZ	155	164	1,960	1,840	304	302	-0.7
CA	1,706	1,742	1,675	1,635	2,858	2,848	-0.3
CO	100	99	1,680	1,720	168	170	1.2
FL	139	139	1,415	1,460	197	203	3.0
ID	412	437	1,660	1,660	684	725	6.0
IL	108	105	1,520	1,500	164	158	-3.7
IN	145	154	1,565	1,510	227	233	2.6
IA	195	187	1,590	1,580	310	295	-4.8
KS	112	108	1,545	1,570	173	170	-1.7
KY	111	110	1,035	1,020	115	112	-2.6
MI	299	306	1,660	1,640	496	502	1.2
MN	465	455	1,415	1,405	658	639	-2.9
MO	124	117	1,185	1,220	147	143	-2.7
NM	326	320	1,660	1,560	541	499	-7.8
NY	660	650	1,400	1,415	924	920	-0.4
OH	259	267	1,370	1,370	355	366	3.1
OR	119	120	1,475	1,460	176	175	-0.6
PA	564	560	1,425	1,420	804	795	-1.1
TX	317	317	1,585	1,560	502	495	-1.4
VT	145	143	1,435	1,430	208	204	-1.9
VA	105	105	1,320	1,360	139	143	2.9
WA	240	235	1,790	1,820	430	428	-0.5
WI	1,245	1,234	1,405	1,390	1,749	1,715	-1.9
23-State Total	8,051	8,074	1,531	1,516	12,329	12,240	-0.7

¹ Includes dry cows, excludes heifers not yet fresh.

² Excludes milk sucked by calves.

Monthly Milk Production 23 States

Million Pounds



Milk Cows and Production: By State, January 2004-2005 ¹

State	Milk Cows ²		Milk per Cow ³		Milk Production ³		
	2004	2005	2004	2005	2004	2005	Change From 2004
	<i>1,000 Head</i>	<i>1,000 Head</i>	<i>Pounds</i>	<i>Pounds</i>	<i>Million Pounds</i>	<i>Million Pounds</i>	<i>Percent</i>
AZ	155	165	2,010	1,970	312	325	4.2
CA	1,701	1,739	1,760	1,770	2,994	3,078	2.8
CO	99	100	1,830	1,860	181	186	2.8
FL	140	138	1,435	1,500	201	207	3.0
ID	412	436	1,800	1,830	742	798	7.5
IL	108	105	1,610	1,620	174	170	-2.3
IN	145	154	1,695	1,630	246	251	2.0
IA	196	187	1,680	1,715	329	321	-2.4
KS	111	109	1,695	1,730	188	189	0.5
KY	112	110	1,090	1,090	122	120	-1.6
MI	300	306	1,780	1,770	534	542	1.5
MN	465	460	1,505	1,520	700	699	-0.1
MO	125	118	1,265	1,300	158	153	-3.2
NM	325	319	1,760	1,710	572	545	-4.7
NY	658	650	1,490	1,535	980	998	1.8
OH	258	267	1,450	1,460	374	390	4.3
OR	118	120	1,565	1,565	185	188	1.6
PA	563	564	1,500	1,540	845	869	2.8
TX	317	318	1,660	1,655	526	526	
VT	146	143	1,515	1,560	221	223	0.9
VA	105	105	1,410	1,465	148	154	4.1
WA	240	235	1,895	1,960	455	461	1.3
WI	1,245	1,235	1,505	1,510	1,874	1,865	-0.5
23-State Total	8,044	8,083	1,624	1,640	13,061	13,258	1.5

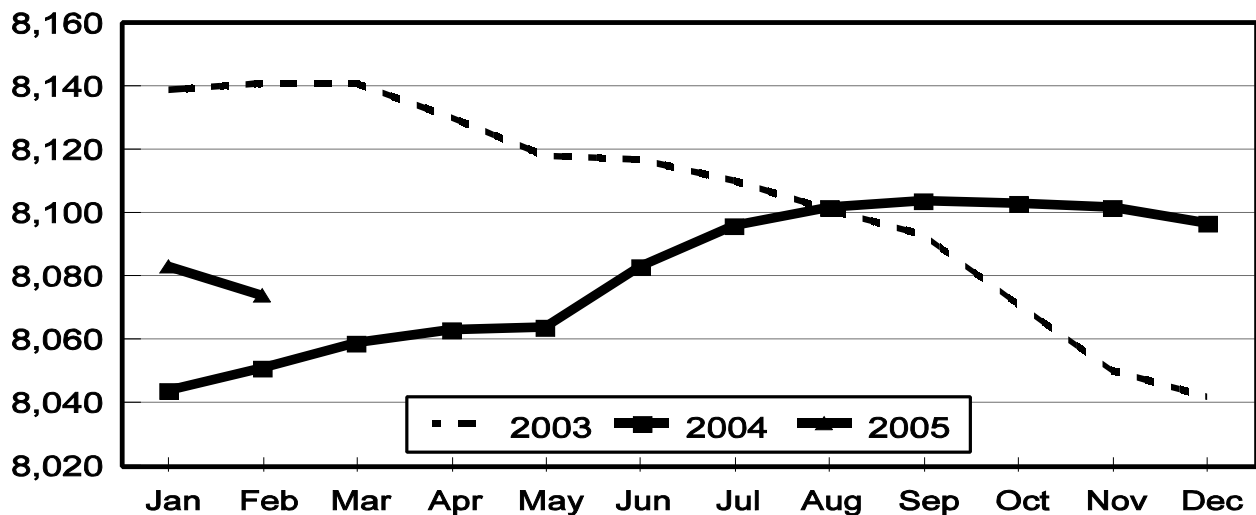
¹ 2005 revised.

² Includes dry cows, excludes heifers not yet fresh.

³ Excludes milk sucked by calves.

Monthly Milk Cows 23 States

Thousand Head



Reliability Statement

Survey Procedures: Primary data used to determine these estimates were obtained from a sample of producers. Individual States maintain a list of all known milk producers and information on the size of their herd. States use all known sources of producers to ensure that their lists are as complete as possible. Generally, all large producers and a sample of small producers are included in the survey. Questionnaires are mailed to producers near the end of the month to obtain data for the first day of the month. Additional reports are obtained by telephone, as needed, to supplement the mail response. Where feasible, States utilize state and federal administrative data, rather than conduct a monthly or quarterly survey, to estimate milk production. This eliminates duplication of data gathering by different government agencies. Indications of milk cow inventory are also obtained in the January and July Cattle Surveys.

Estimation Procedures: State offices prepare these estimates by using a combination of survey indications, historic trends, and any available administrative data. Individual State estimates are reviewed by the Agricultural Statistics Board for reasonableness.

Revision Policy: Milk production, rate per cow, and number of cows are subject to revision the following month for monthly States or the following quarter for the quarterly States. Normally, Federal Market Order sales are the main basis for revisions. However, data for all orders are not available in time for this revision. Estimates are again subject to revisions in February each year based on additional administrative data. In the event that additional changes are necessary, a third revision is possible in February the following year. Estimates are again reviewed after data from the five-year Census of Agriculture are available. No revisions are made after that date.

Reliability: Since all operations with dairy animals are not included in the sample, survey estimates are subject to sampling variability. Survey results are also subject to non-sampling errors such as omissions, duplications, and mistakes in reporting, recording, and processing the data. The effects of these errors cannot be measured directly. They are minimized through rigid quality controls in the data collection process and through a careful review of all reported data for consistency and reasonableness.

To assist users in evaluating the reliability of the estimates in this report, the "Root Mean Square Error" is shown for selected items on the next page. The "Root Mean Square Error" is a statistical measure based on past performance and is computed using the differences between first and final estimates. The "Root Mean Square Error" for milk cow inventory estimates over the past 10 October-December quarters is 0.4 percent. This means that chances are 2 out of 3 that the final October-December estimate will not be above or below the current estimate of 9.02 million head by more than 0.4 percent. Chances are 9 out of 10 that the difference will not exceed 0.7 percent.

Reliability of October-December Milk Estimates ¹

Item	Root Mean Square Error	90% Confidence Level		Difference Between First and Latest Estimates			Quarters	
				Average	Smallest	Largest	First Above Latest	First Below Latest
				<i>Million Pounds</i>	<i>Million Pounds</i>	<i>Million Pounds</i>	<i>Number</i>	<i>Number</i>
Milk Production	<i>Percent</i>	<i>Percent</i>	<i>Million Pounds</i>	<i>Million Pounds</i>	<i>Million Pounds</i>	<i>Million Pounds</i>	<i>Number</i>	<i>Number</i>
	0.4	0.8	336	147	1	265	6	4
All Milk Cows	<i>Percent</i>	<i>Percent</i>	<i>1,000 Head</i>	<i>1,000 Head</i>	<i>1,000 Head</i>	<i>1,000 Head</i>	<i>Number</i>	<i>Number</i>
	0.4	0.7	63	22	1	73	7	3

¹ Based on records for the past 10 October-December quarters.

ACCESS TO REPORTS!!

For your convenience, there are several ways to obtain NASS reports, data products, and services:

INTERNET ACCESS

All NASS reports are available free of charge on the worldwide Internet. For access, connect to the Internet and go to the NASS Home Page at: www.usda.gov/nass/. Select "Today's Reports" or Publications and then Reports Calendar or Publications and then Search, by Title or Subject.

E-MAIL SUBSCRIPTION

All NASS reports are available by subscription free of charge direct to your e-mail address. Starting with the NASS Home Page at www.usda.gov/nass/, click on **Publications**, then click on the **Subscribe by E-mail** button which takes you to the page describing e-mail delivery of reports. Finally, click on **Go to the Subscription Page** and follow the instructions.

PRINTED REPORTS OR DATA PRODUCTS

CALL OUR TOLL-FREE ORDER DESK: 800-999-6779 (U.S. and Canada)
Other areas, please call 703-605-6220 FAX: 703-605-6900
(Visa, MasterCard, check, or money order acceptable for payment.)

ASSISTANCE

For **assistance** with general agricultural statistics or further information about NASS or its products or services, contact the **Agricultural Statistics Hotline** at **800-727-9540**, 7:30 a.m. to 4:00 p.m. ET, or e-mail: nass@nass.usda.gov.

The United States Department of Agriculture (USDA) prohibits discrimination in all its programs on the basis of race, color, national origin, gender, religion, age, disability, political beliefs, sexual orientation, and marital or family status. (Not all prohibited bases apply to all programs.) Persons with disabilities who require alternative means for communication of program information (braille, large print, audiotape, etc.) should contact the USDA's TARGET Center at 202-720-2600 (voice and TDD).

To file a complaint of discrimination, write USDA, Director, Office of Civil Rights, Room 326-W, Whitten Building, 1400 Independence Avenue, SW, Washington, D.C., 20250-9410, or call 202-720-5964 (voice or TDD). USDA is an equal opportunity provider and employer.