

Released April 15, 2005, by the National Agricultural Statistics Service (NASS), Agricultural Statistics Board, U.S. Department of Agriculture. For information on *Milk Production* call Ty Kalaus at 202-690-3236, office hours 7:30 a.m. to 4:00 p.m. ET.

March Milk Production Up 3.1 Percent

Milk production in the 23 major States during March totaled 13.8 billion pounds, up 3.1 percent from March 2004. February revised production, at 12.3 billion pounds, was down 0.5 percent from February 2004. However, production was up 3.1 percent on a per day basis after adjusting for the leap year. The February revision represented an increase of 30 million pounds or 0.2 percent from last month's preliminary production estimate.

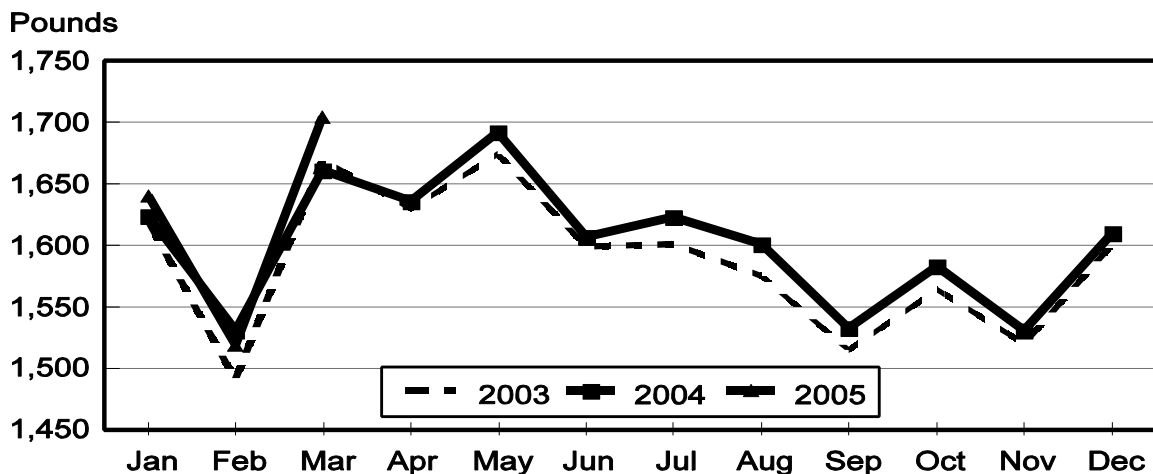
Production per cow in the 23 major States averaged 1,704 pounds for March, 43 pounds above March 2004.

The number of milk cows on farms in the 23 major States was 8.10 million head, 38,000 head more than March 2004, and 21,000 head more than February 2005.

January-February Milk Production Up 1.1 Percent

Milk production in the U.S. during the January-March quarter totaled 43.2 billion pounds, up 1.1 percent from the January-March quarter last year. The average number of milk cows in the U.S. during the quarter was 9.00 million head, 2,000 head more than the same period last year.

Monthly Milk per Cow 23 States



Milk Cows and Production: By Quarter, United States, 2004-2005 ¹

Quarter	Milk Cows ²		Milk Per Cow ³		Milk Production ³		
	2004	2005	2004	2005	2004	2005	Change From 2004
	<i>1,000 Head</i>	<i>1,000 Head</i>	<i>Pounds</i>	<i>Pounds</i>	<i>Million Pounds</i>	<i>Million Pounds</i>	<i>Percent</i>
Jan-Mar	8,993	8,995	4,755	4,807	42,759	43,238	1.1
Apr-Jun	9,001		4,869		43,824		
Jul-Sep	9,027		4,679		42,239		
Oct-Dec	9,019		4,655		41,983		
Annual	9,010		18,957		170,805		

¹ May not add due to rounding.

² Includes dry cows, excludes heifers not yet fresh.

³ Excludes milk sucked by calves.

Milk Cows and Production: By Month, 23 Selected States, 2004-2005 ¹

Month	Milk Cows ²		Milk Per Cow ³		Milk Production ³		
	2004	2005	2004	2005	2004	2005	Change From 2004
	<i>1,000 Head</i>	<i>1,000 Head</i>	<i>Pounds</i>	<i>Pounds</i>	<i>Million Pounds</i>	<i>Million Pounds</i>	<i>Percent</i>
Jan	8,044	8,083	1,624	1,640	13,061	13,258	1.5
Feb	8,051	8,076	1,531	1,519	12,329	12,270	-0.5
Mar	8,059	8,097	1,661	1,704	13,387	13,799	3.1
Apr	8,063		1,636		13,194		
May	8,064		1,692		13,641		
Jun	8,083		1,607		12,988		
Jul	8,096		1,623		13,143		
Aug	8,102		1,601		12,970		
Sep	8,104		1,533		12,426		
Oct	8,103		1,583		12,824		
Nov	8,102		1,531		12,404		
Dec	8,097		1,610		13,037		
Annual	8,081		19,232		155,404		

¹ 2005 revised.

² Includes dry cows, excludes heifers not yet fresh.

³ Excludes milk sucked by calves.

Estimated Milk Cows and Production: By Month, United States, 2004-2005 ¹

Month	Milk Cows ²		Milk Per Cow ³		Milk Production ³		
	2004	2005	2004	2005	2004	2005	Change From 2004
	<i>1,000 Head</i>	<i>1,000 Head</i>	<i>Pounds</i>	<i>Pounds</i>	<i>Million Pounds</i>	<i>Million Pounds</i>	<i>Percent</i>
Jan	8,985	8,993	1,603	1,621	14,402	14,576	1.2
Feb	8,993	8,982	1,512	1,502	13,595	13,490	-0.8
Mar	9,002	9,010	1,640	1,684	14,762	15,172	2.8
Apr	8,999		1,613		14,519		
May	8,991		1,670		15,012		
Jun	9,014		1,586		14,293		
Jul	9,028		1,596		14,405		
Aug	9,029		1,574		14,215		
Sep	9,025		1,509		13,619		
Oct	9,023		1,559		14,070		
Nov	9,021		1,509		13,610		
Dec	9,013		1,587		14,303		
Annual	9,010		18,957		170,805		

¹ 2005 revised.

² Includes dry cows, excludes heifers not yet fresh.

³ Excludes milk sucked by calves.

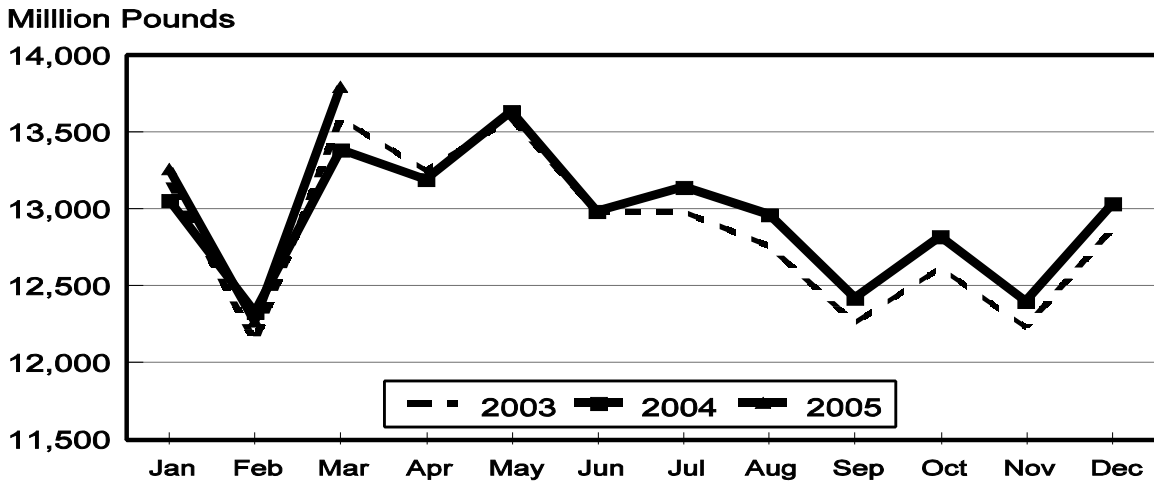
Milk Cows and Production: By State, March 2004-2005

State	Milk Cows ¹		Milk Per Cow ²		Milk Production ²		
	2004	2005	2004	2005	2004	2005	Change From 2004
	<i>1,000 Head</i>	<i>1,000 Head</i>	<i>Pounds</i>	<i>Pounds</i>	<i>Million Pounds</i>	<i>Million Pounds</i>	<i>Percent</i>
AZ	155	164	2,120	2,060	329	338	2.7
CA	1,710	1,748	1,815	1,845	3,104	3,225	3.9
CO	100	101	1,830	1,910	183	193	5.5
FL	138	139	1,550	1,635	214	227	6.1
ID	413	440	1,780	1,870	735	823	12.0
IL	108	105	1,650	1,670	178	175	-1.7
IN	147	154	1,820	1,700	268	262	-2.2
IA	195	187	1,730	1,770	337	331	-1.8
KS	113	110	1,680	1,755	190	193	1.6
KY	110	109	1,175	1,165	129	127	-1.6
MI	301	308	1,810	1,820	545	561	2.9
MN	465	455	1,510	1,560	702	710	1.1
MO	123	119	1,345	1,370	165	163	-1.2
NM	327	322	1,765	1,790	577	576	-0.2
NY	660	651	1,510	1,595	997	1,038	4.1
OH	260	268	1,510	1,520	393	407	3.6
OR	120	121	1,560	1,620	187	196	4.8
PA	564	560	1,570	1,600	885	896	1.2
TX	317	317	1,735	1,790	550	567	3.1
VT	145	143	1,530	1,595	222	228	2.7
VA	105	105	1,465	1,495	154	157	1.9
WA	239	238	1,945	2,030	465	483	3.9
WI	1,244	1,233	1,510	1,560	1,878	1,923	2.4
23-State Total	8,059	8,097	1,661	1,704	13,387	13,799	3.1

¹ Includes dry cows, excludes heifers not yet fresh.

² Excludes milk sucked by calves.

Monthly Milk Production 23 States



Milk Cows and Production: By State, February 2004-2005 ¹

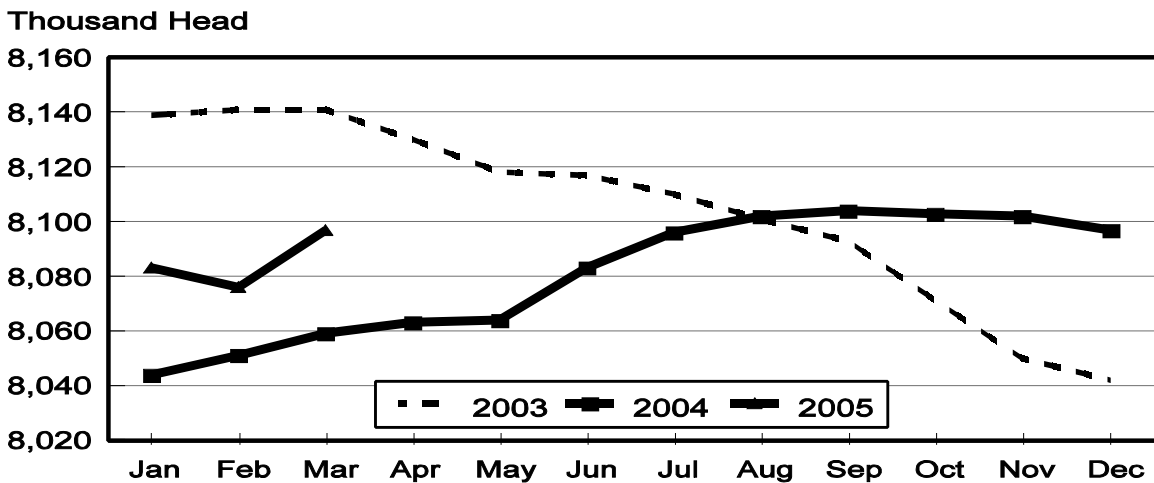
State	Milk Cows ²		Milk per Cow ³		Milk Production ³		
	2004	2005	2004	2005	2004	2005	Change From 2004
	<i>1,000 Head</i>	<i>1,000 Head</i>	<i>Pounds</i>	<i>Pounds</i>	<i>Million Pounds</i>	<i>Million Pounds</i>	<i>Percent</i>
AZ	155	164	1,960	1,840	304	302	-0.7
CA	1,706	1,742	1,675	1,635	2,858	2,848	-0.3
CO	100	100	1,680	1,720	168	172	2.4
FL	139	139	1,415	1,475	197	205	4.1
ID	412	437	1,660	1,680	684	734	7.3
IL	108	105	1,520	1,500	164	158	-3.7
IN	145	154	1,565	1,510	227	233	2.6
IA	195	187	1,590	1,580	310	295	-4.8
KS	112	109	1,545	1,575	173	172	-0.6
KY	111	110	1,035	1,000	115	110	-4.3
MI	299	306	1,660	1,640	496	502	1.2
MN	465	455	1,415	1,405	658	639	-2.9
MO	124	117	1,185	1,220	147	143	-2.7
NM	326	320	1,660	1,560	541	499	-7.8
NY	660	650	1,400	1,415	924	920	-0.4
OH	259	267	1,370	1,370	355	366	3.1
OR	119	120	1,475	1,460	176	175	-0.6
PA	564	560	1,425	1,420	804	795	-1.1
TX	317	317	1,585	1,560	502	495	-1.4
VT	145	143	1,435	1,430	208	204	-1.9
VA	105	105	1,320	1,345	139	141	1.4
WA	240	235	1,790	1,820	430	428	-0.5
WI	1,245	1,234	1,405	1,405	1,749	1,734	-0.9
23-State Total	8,051	8,076	1,531	1,519	12,329	12,270	-0.5

¹ 2005 revised.

² Includes dry cows, excludes heifers not yet fresh.

³ Excludes milk sucked by calves.

Monthly Milk Cows 23 States



**Milk Cows and Production: By State and United States,
Revised October-December, 2003-2004**

State	Oct-Dec Milk Cows ¹		Oct-Dec Milk Production ²		Change From 2003
	2003	2004	2003	2004	
	<i>1,000 Head</i>	<i>1,000 Head</i>	<i>Million Pounds</i>	<i>Million Pounds</i>	<i>Percent</i>
AL	18	17	60	56	-6.7
AK	1.2	1.2	3.5	3.4	-2.9
AZ	155	167	847	910	7.4
AR	27	23	80	73	-8.8
CA	1,696	1,741	8,695	9,130	5.0
CO	99	103	523	553	5.7
CT	21	20	99	95	-4.0
DE	8.0	7.5	30.0	31.5	5.0
FL	140	137	510	531	4.1
GA	84	84	337	334	-0.9
HI	6.6	5.8	21.1	17.4	-17.5
ID	412	434	2,209	2,310	4.6
IL	109	106	498	474	-4.8
IN	151	154	743	726	-2.3
IA	197	190	930	939	1.0
KS	110	112	536	544	1.5
KY	112	109	351	341	-2.8
LA	41	36	118	108	-8.5
ME	34	33	151	148	-2.0
MD	77	73	293	285	-2.7
MA	18	17	76	73	-3.9
MI	302	306	1,583	1,565	-1.1
MN	465	460	1,993	1,974	-1.0
MS	29	26	96	86	-10.4
MO	125	120	455	445	-2.2
MT	18	18	85	86	1.2
NE	62	61	270	264	-2.2
NV	25	25	120	128	6.7
NH	16	16	73	74	1.4
NJ	12	12	50	47	-6.0
NM	321	322	1,650	1,593	-3.5
NY	661	651	2,871	2,843	-1.0
NC	59	55	250	242	-3.2
ND	34	33	126	127	0.8
OH	258	266	1,093	1,131	3.5
OK	81	75	320	297	-7.2
OR	118	120	538	556	3.3
PA	561	564	2,445	2,466	0.9
RI	1.3	1.1	5.1	4.5	-11.8
SC	18	18	72	69	-4.2
SD	80	80	326	338	3.7
TN	77	73	285	270	-5.3
TX	317	320	1,405	1,432	1.9
UT	90	89	405	397	-2.0
VT	146	144	640	632	-1.3
VA	108	104	414	428	3.4
WA	243	235	1,359	1,324	-2.6
WV	14	13	52	48	-7.7
WI	1,249	1,237	5,444	5,418	-0.5
WY	3.9	4.4	14.4	16.3	13.2
US ³	9,011	9,019	41,550	41,983	1.0

¹ Includes dry cows, excludes heifers not yet fresh.

² Excludes milk sucked by calves.

³ May not add due to rounding.

**Milk Cows and Production: By State and United States,
Preliminary January-March, 2004-2005**

State	Jan-Mar Milk Cows ¹		Jan-Mar Milk Production ²		Change From 2004
	2004	2005	2004	2005	
	<i>1,000 Head</i>	<i>1,000 Head</i>	<i>Million Pounds</i>	<i>Million Pounds</i>	<i>Percent</i>
AL	17	16	71	63	-11.3
AK	1.2	1.2	3.6	3.5	-2.8
AZ	155	164	945	965	2.1
AR	25	23	86	82	-4.7
CA	1,706	1,743	8,956	9,151	2.2
CO	100	100	532	551	3.6
CT	21	20	102	99	-2.9
DE	7.5	7.5	34.0	34.0	
FL	139	139	612	639	4.4
GA	84	83	381	377	-1.0
HI	6.5	5.8	21.9	17.6	-19.6
ID	412	438	2,161	2,355	9.0
IL	108	105	516	503	-2.5
IN	146	154	741	746	0.7
IA	195	187	976	947	-3.0
KS	112	109	551	554	0.5
KY	111	110	366	357	-2.5
LA	40	36	139	127	-8.6
ME	34	32	151	147	-2.6
MD	76	73	300	299	-0.3
MA	17	17	74	73	-1.4
MI	300	307	1,575	1,605	1.9
MN	465	457	2,060	2,048	-0.6
MS	28	26	109	109	
MO	124	118	470	459	-2.3
MT	18	18	85	87	2.4
NE	61	60	267	264	-1.1
NV	25	25	127	128	0.8
NH	16	16	76	76	
NJ	12	12	52	49	-5.8
NM	326	320	1,690	1,620	-4.1
NY	659	650	2,901	2,956	1.9
NC	58	55	264	253	-4.2
ND	33	33	129	128	-0.8
OH	259	267	1,122	1,163	3.7
OK	80	75	330	311	-5.8
OR	119	120	548	559	2.0
PA	564	561	2,534	2,560	1.0
RI	1.2	1.0	5.2	4.5	-13.5
SC	17	18	79	79	
SD	80	80	333	344	3.3
TN	77	72	310	295	-4.8
TX	317	317	1,578	1,588	0.6
UT	88	88	387	398	2.8
VT	145	143	651	655	0.6
VA	105	105	441	452	2.5
WA	240	236	1,350	1,372	1.6
WV	13	13	50	48	-4.0
WI	1,245	1,234	5,501	5,522	0.4
WY	4.1	4.4	14.8	15.6	5.4
US ³	8,993	8,995	42,759	43,238	1.1

¹ Includes dry cows, excludes heifers not yet fresh.

² Excludes milk sucked by calves.

³ May not add due to rounding.

Reliability Statement

Survey Procedures: Primary data used to determine these estimates were obtained from a sample of producers. Individual States maintain a list of all known milk producers and information on the size of their herd. States use all known sources of producers to ensure that their lists are as complete as possible. Generally, all large producers and a sample of small producers are included in the survey. Questionnaires are mailed to producers near the end of the month to obtain data for the first day of the month. Additional reports are obtained by telephone, as needed, to supplement the mail response. Where feasible, States utilize state and federal administrative data, rather than conduct a monthly or quarterly survey, to estimate milk production. This eliminates duplication of data gathering by different government agencies. Indications of milk cow inventory are also obtained in the January and July Cattle Surveys.

Estimation Procedures: State offices prepare these estimates by using a combination of survey indications, historic trends, and any available administrative data. Individual State estimates are reviewed by the Agricultural Statistics Board for reasonableness.

Revision Policy: Milk production, rate per cow, and number of cows are subject to revision the following month for monthly States or the following quarter for the quarterly States. Normally, Federal Market Order sales are the main basis for revisions. However, data for all orders are not available in time for this revision. Estimates are again subject to revisions in February each year based on additional administrative data. In the event that additional changes are necessary, a third revision is possible in February the following year. Estimates are again reviewed after data from the five-year Census of Agriculture are available. No revisions are made after that date.

Reliability: Since all operations with dairy animals are not included in the sample, survey estimates are subject to sampling variability. Survey results are also subject to non-sampling errors such as omissions, duplications, and mistakes in reporting, recording, and processing the data. The effects of these errors cannot be measured directly. They are minimized through rigid quality controls in the data collection process and through a careful review of all reported data for consistency and reasonableness.

To assist users in evaluating the reliability of the estimates in this report, the "Root Mean Square Error" is shown for selected items on the next page. The "Root Mean Square Error" is a statistical measure based on past performance and is computed using the differences between first and final estimates. The "Root Mean Square Error" for milk cow inventory estimates over the past 10 January-March quarters is 0.2 percent. This means that chances are 2 out of 3 that the final January-March estimate will not be above or below the current estimate of 9.00 million head by more than 0.2 percent. Chances are 9 out of 10 that the difference will not exceed 0.4 percent.

Reliability of January-March Milk Estimates ¹

Item	Root Mean Square Error	90% Confidence Level		Difference Between First and Latest Estimates			Quarters	
				Average	Smallest	Largest	First Above Latest	First Below Latest
				<i>Million Pounds</i>	<i>Million Pounds</i>	<i>Million Pounds</i>	<i>Number</i>	<i>Number</i>
Milk Production	<i>Percent</i> 0.4	<i>Percent</i> 0.7	<i>Million Pounds</i> 303	<i>Million Pounds</i> 136	<i>Million Pounds</i> 10	<i>Million Pounds</i> 375	<i>Number</i> 6	<i>Number</i> 4
All Milk Cows	<i>Percent</i> 0.2	<i>Percent</i> 0.4	<i>1,000 Head</i> 36	<i>1,000 Head</i> 15	<i>1,000 Head</i> 2	<i>1,000 Head</i> 44	<i>Number</i> 6	<i>Number</i> 4

¹ Based on records for the past 10 January-March quarters.

ACCESS TO REPORTS!!

For your convenience, there are several ways to obtain NASS reports, data products, and services:

INTERNET ACCESS

All NASS reports are available free of charge on the worldwide Internet. For access, connect to the Internet and go to the NASS Home Page at: www.usda.gov/nass/. Select "Today's Reports" or Publications and then Reports Calendar or Publications and then Search, by Title or Subject.

E-MAIL SUBSCRIPTION

All NASS reports are available by subscription free of charge direct to your e-mail address. Starting with the NASS Home Page at www.usda.gov/nass/, click on **Publications**, then click on the **Subscribe by E-mail** button which takes you to the page describing e-mail delivery of reports. Finally, click on **Go to the Subscription Page** and follow the instructions.

PRINTED REPORTS OR DATA PRODUCTS

CALL OUR TOLL-FREE ORDER DESK: 800-999-6779 (U.S. and Canada)
Other areas, please call 703-605-6220 FAX: 703-605-6900
(Visa, MasterCard, check, or money order acceptable for payment.)

ASSISTANCE

For **assistance** with general agricultural statistics or further information about NASS or its products or services, contact the **Agricultural Statistics Hotline** at **800-727-9540**, 7:30 a.m. to 4:00 p.m. ET, or e-mail: **nass@nass.usda.gov**.

The U.S. Department of Agriculture (USDA) prohibits discrimination in all its programs and activities on the basis of race, color, national origin, sex, religion, age, disability, political beliefs, sexual orientation, and marital or family status. (Not all prohibited bases apply to all programs.) Persons with disabilities who require alternative means for communication of program information (Braille, large print, audiotape, etc.) should contact USDA's TARGET Center at 202-720-2600 (voice and TDD).

To file a complaint of discrimination, write USDA, Director, Office of Civil Rights, Room 326-W, Whitten Building, 14th and Independence Avenue, SW, Washington, DC 20250-9410 or call 202-720-5964 (voice and TDD). USDA is an equal opportunity provider and employer.