

Released May 17, 2005, by the National Agricultural Statistics Service (NASS), Agricultural Statistics Board, U.S. Department of Agriculture. For information on *Milk Production* call Ty Kalaus at 202-690-3236, office hours 7:30 a.m. to 4:00 p.m. ET.

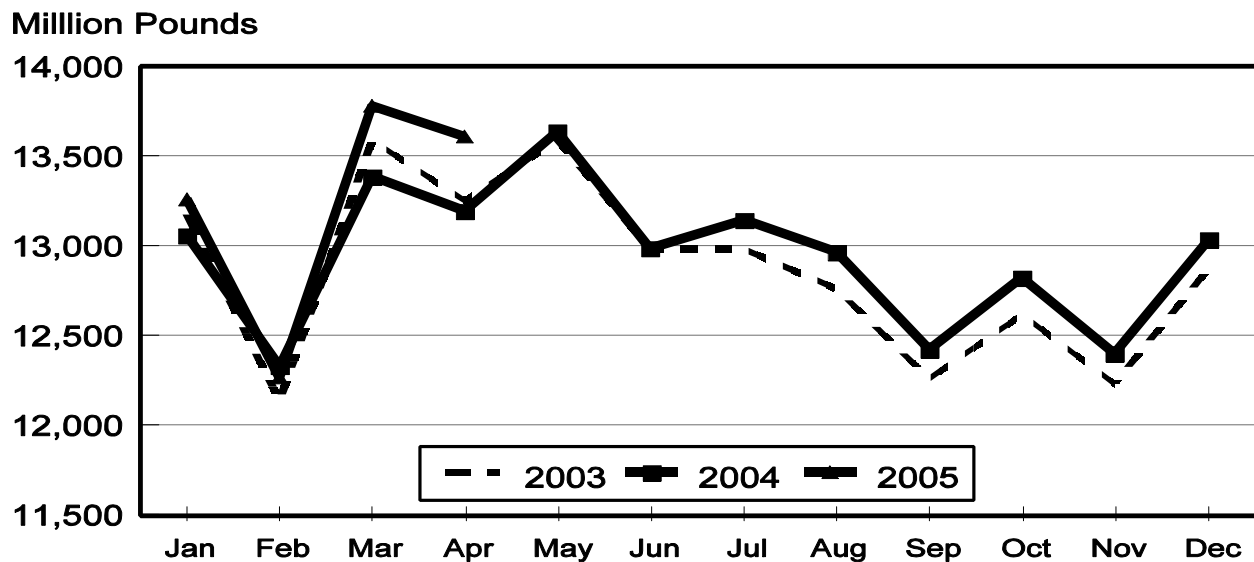
## April Milk Production Up 3.2 Percent

**Milk production** in the 23 major States during April totaled 13.6 billion pounds, up 3.2 percent from April 2004. March revised production, at 13.8 billion pounds, was up 2.9 percent from March 2004. The March revision represented a decrease of 0.1 percent or 20 million pounds from last month's preliminary production estimate.

**Production per cow** in the 23 major States averaged 1,679 pounds for April, 43 pounds above April 2004.

**The number of milk cows** on farms in the 23 major States was 8.11 million head, 44,000 head more than April 2004, and 12,000 head more than March 2005.

## Monthly Milk Production 23 States



**Milk Cows and Production: By Quarter, United States, 2004-2005 <sup>1</sup>**

Quarter	Milk Cows <sup>2</sup>		Milk Per Cow <sup>3</sup>		Milk Production <sup>3</sup>		
	2004	2005	2004	2005	2004	2005	Change From 2004
	<i>1,000 Head</i>	<i>1,000 Head</i>	<i>Pounds</i>	<i>Pounds</i>	<i>Million Pounds</i>	<i>Million Pounds</i>	<i>Percent</i>
Jan-Mar	8,993	8,995	4,755	4,805	42,759	43,218	1.1
Apr-Jun	9,001		4,869		43,824		
Jul-Sep	9,027		4,679		42,239		
Oct-Dec	9,019		4,655		41,983		
Annual	9,010		18,957		170,805		

<sup>1</sup> May not add due to rounding.

<sup>2</sup> Includes dry cows, excludes heifers not yet fresh.

<sup>3</sup> Excludes milk sucked by calves.

**Milk Cows and Production: By Month, 23 Selected States, 2004-2005 <sup>1</sup>**

Month	Milk Cows <sup>2</sup>		Milk Per Cow <sup>3</sup>		Milk Production <sup>3</sup>		
	2004	2005	2004	2005	2004	2005	Change From 2004
	<i>1,000 Head</i>	<i>1,000 Head</i>	<i>Pounds</i>	<i>Pounds</i>	<i>Million Pounds</i>	<i>Million Pounds</i>	<i>Percent</i>
Jan	8,044	8,083	1,624	1,640	13,061	13,258	1.5
Feb	8,051	8,076	1,531	1,519	12,329	12,270	-0.5
Mar	8,059	8,095	1,661	1,702	13,387	13,779	2.9
Apr	8,063	8,107	1,636	1,679	13,194	13,612	3.2
May	8,064		1,692		13,641		
Jun	8,083		1,607		12,988		
Jul	8,096		1,623		13,143		
Aug	8,102		1,601		12,970		
Sep	8,104		1,533		12,426		
Oct	8,103		1,583		12,824		
Nov	8,102		1,531		12,404		
Dec	8,097		1,610		13,037		
Annual	8,081		19,232		155,404		

<sup>1</sup> 2005 revised.

<sup>2</sup> Includes dry cows, excludes heifers not yet fresh.

<sup>3</sup> Excludes milk sucked by calves.

**Estimated Milk Cows and Production: By Month, United States, 2004-2005 <sup>1</sup>**

Month	Milk Cows <sup>2</sup>		Milk Per Cow <sup>3</sup>		Milk Production <sup>3</sup>		
	2004	2005	2004	2005	2004	2005	Change From 2004
	<i>1,000 Head</i>	<i>1,000 Head</i>	<i>Pounds</i>	<i>Pounds</i>	<i>Million Pounds</i>	<i>Million Pounds</i>	<i>Percent</i>
Jan	8,985	8,993	1,603	1,621	14,402	14,577	1.2
Feb	8,993	8,982	1,512	1,502	13,595	13,491	-0.8
Mar	9,002	9,009	1,640	1,682	14,762	15,150	2.6
Apr	8,999	9,026	1,613	1,655	14,519	14,936	2.9
May	8,991		1,670		15,012		
Jun	9,014		1,586		14,293		
Jul	9,028		1,596		14,405		
Aug	9,029		1,574		14,215		
Sep	9,025		1,509		13,619		
Oct	9,023		1,559		14,070		
Nov	9,021		1,509		13,610		
Dec	9,013		1,587		14,303		
Annual	9,010		18,957		170,805		

<sup>1</sup> 2005 revised.

<sup>2</sup> Includes dry cows, excludes heifers not yet fresh.

<sup>3</sup> Excludes milk sucked by calves.

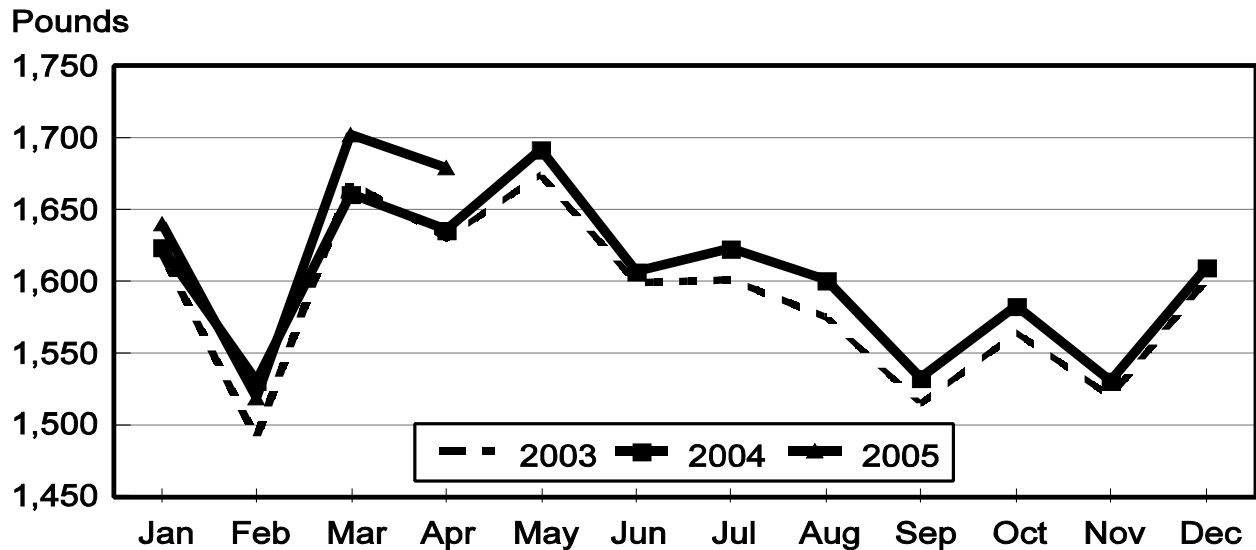
**Milk Cows and Production: By State, April 2004-2005**

State	Milk Cows <sup>1</sup>		Milk Per Cow <sup>2</sup>		Milk Production <sup>2</sup>		
	2004	2005	2004	2005	2004	2005	Change From 2004
	<i>1,000 Head</i>	<i>1,000 Head</i>	<i>Pounds</i>	<i>Pounds</i>	<i>Million Pounds</i>	<i>Million Pounds</i>	<i>Percent</i>
AZ	155	164	2,090	2,050	324	336	3.7
CA	1,716	1,751	1,790	1,820	3,072	3,187	3.7
CO	101	103	1,800	1,880	182	194	6.6
FL	138	138	1,515	1,600	209	221	5.7
ID	414	443	1,770	1,850	733	820	11.9
IL	108	105	1,580	1,605	171	169	-1.2
IN	149	155	1,750	1,690	261	262	0.4
IA	195	187	1,700	1,740	332	325	-2.1
KS	113	111	1,675	1,755	189	195	3.2
KY	109	107	1,155	1,150	126	123	-2.4
MI	301	309	1,745	1,800	525	556	5.9
MN	465	455	1,480	1,520	688	692	0.6
MO	124	119	1,370	1,350	170	161	-5.3
NM	327	323	1,730	1,780	566	575	1.6
NY	658	646	1,500	1,545	987	998	1.1
OH	261	269	1,500	1,500	392	404	3.1
OR	120	121	1,590	1,540	191	186	-2.6
PA	561	563	1,550	1,590	870	895	2.9
TX	317	319	1,705	1,780	540	568	5.2
VT	145	143	1,485	1,580	215	226	5.1
VA	105	105	1,450	1,485	152	156	2.6
WA	239	238	1,905	1,975	455	470	3.3
WI	1,242	1,233	1,485	1,535	1,844	1,893	2.7
23-State Total	8,063	8,107	1,636	1,679	13,194	13,612	3.2

<sup>1</sup> Includes dry cows, excludes heifers not yet fresh.

<sup>2</sup> Excludes milk sucked by calves.

## Monthly Milk per Cow 23 States



**Milk Cows and Production: By State, March 2004-2005 <sup>1</sup>**

State	Milk Cows <sup>2</sup>		Milk per Cow <sup>3</sup>		Milk Production <sup>3</sup>		Change From 2004
	2004	2005	2004	2005	2004	2005	
	<i>1,000 Head</i>	<i>1,000 Head</i>	<i>Pounds</i>	<i>Pounds</i>	<i>Million Pounds</i>	<i>Million Pounds</i>	<i>Percent</i>
AZ	155	164	2,120	2,060	329	338	2.7
CA	1,710	1,748	1,815	1,845	3,104	3,225	3.9
CO	100	102	1,830	1,925	183	196	7.1
FL	138	139	1,550	1,640	214	228	6.5
ID	413	441	1,780	1,880	735	829	12.8
IL	108	105	1,650	1,670	178	175	-1.7
IN	147	154	1,820	1,700	268	262	-2.2
IA	195	187	1,730	1,770	337	331	-1.8
KS	113	110	1,680	1,790	190	197	3.7
KY	110	107	1,175	1,160	129	124	-3.9
MI	301	308	1,810	1,820	545	561	2.9
MN	465	455	1,510	1,545	702	703	0.1
MO	123	119	1,345	1,370	165	163	-1.2
NM	327	322	1,765	1,790	577	576	-0.2
NY	660	648	1,510	1,570	997	1,017	2.0
OH	260	268	1,510	1,520	393	407	3.6
OR	120	121	1,560	1,560	187	189	1.1
PA	564	560	1,570	1,600	885	896	1.2
TX	317	318	1,735	1,795	550	571	3.8
VT	145	143	1,530	1,595	222	228	2.7
VA	105	105	1,465	1,495	154	157	1.9
WA	239	238	1,945	2,030	465	483	3.9
WI	1,244	1,233	1,510	1,560	1,878	1,923	2.4
23-State Total	8,059	8,095	1,661	1,702	13,387	13,779	2.9

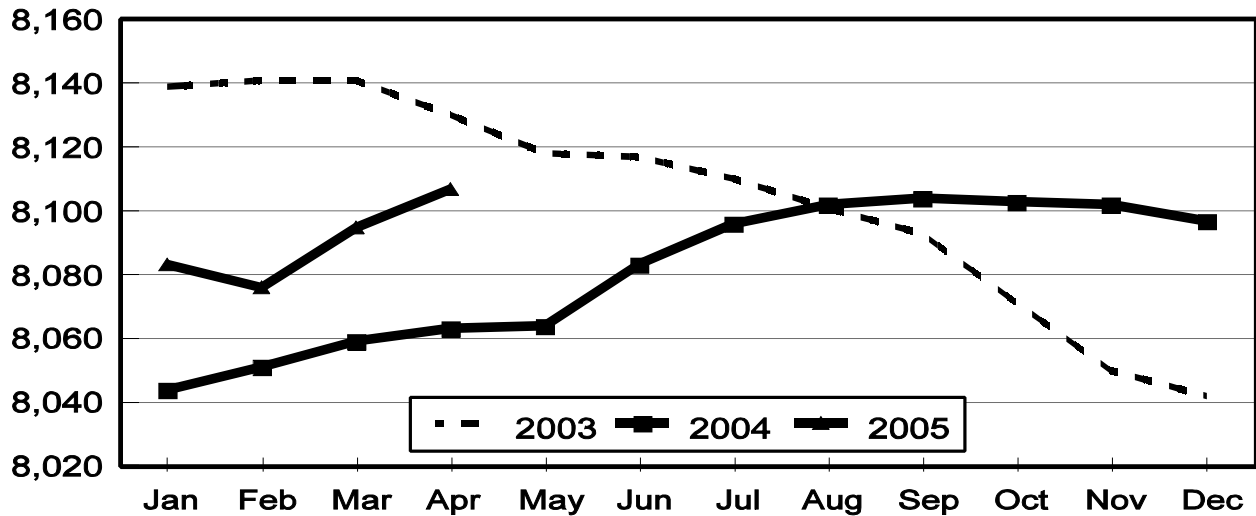
<sup>1</sup> 2005 revised.

<sup>2</sup> Includes dry cows, excludes heifers not yet fresh.

<sup>3</sup> Excludes milk sucked by calves.

## Monthly Milk Cows 23 States

Thousand Head



## Reliability Statement

**Survey Procedures:** Primary data used to determine these estimates were obtained from a sample of producers. Individual States maintain a list of all known milk producers and information on the size of their herd. States use all known sources of producers to ensure that their lists are as complete as possible. Generally, all large producers and a sample of small producers are included in the survey. Questionnaires are mailed to producers near the end of the month to obtain data for the first day of the month. Additional reports are obtained by telephone, as needed, to supplement the mail response. Where feasible, States utilize state and federal administrative data, rather than conduct a monthly or quarterly survey, to estimate milk production. This eliminates duplication of data gathering by different government agencies. Indications of milk cow inventory are also obtained in the January and July Cattle Surveys.

**Estimation Procedures:** State offices prepare these estimates by using a combination of survey indications, historic trends, and any available administrative data. Individual State estimates are reviewed by the Agricultural Statistics Board for reasonableness.

**Revision Policy:** Milk production, rate per cow, and number of cows are subject to revision the following month for monthly States or the following quarter for the quarterly States. Normally, Federal Market Order sales are the main basis for revisions. However, data for all orders are not available in time for this revision. Estimates are again subject to revisions in February each year based on additional administrative data. In the event that additional changes are necessary, a third revision is possible in February the following year. Estimates are again reviewed after data from the five-year Census of Agriculture are available. No revisions are made after that date.

**Reliability:** Since all operations with dairy animals are not included in the sample, survey estimates are subject to sampling variability. Survey results are also subject to non-sampling errors such as omissions, duplications, and mistakes in reporting, recording, and processing the data. The effects of these errors cannot be measured directly. They are minimized through rigid quality controls in the data collection process and through a careful review of all reported data for consistency and reasonableness.

To assist users in evaluating the reliability of the estimates in this report, the "Root Mean Square Error" is shown for selected items on the next page. The "Root Mean Square Error" is a statistical measure based on past performance and is computed using the differences between first and final estimates. The "Root Mean Square Error" for milk cow inventory estimates over the past 10 January-March quarters is 0.2 percent. This means that chances are 2 out of 3 that the final January-March estimate will not be above or below the current estimate of 9.00 million head by more than 0.2 percent. Chances are 9 out of 10 that the difference will not exceed 0.4 percent.

**Reliability of January-March Milk Estimates <sup>1</sup>**

Item	Root Mean Square Error	90% Confidence Level		Difference Between First and Latest Estimates			Quarters	
				Average	Smallest	Largest	First Above Latest	First Below Latest
				<i>Million Pounds</i>	<i>Million Pounds</i>	<i>Million Pounds</i>	<i>Number</i>	<i>Number</i>
Milk Production	<i>Percent</i> 0.4	<i>Percent</i> 0.7	<i>Million Pounds</i> 303	<i>Million Pounds</i> 136	<i>Million Pounds</i> 10	<i>Million Pounds</i> 375	<i>Number</i> 6	<i>Number</i> 4
All Milk Cows	<i>Percent</i> 0.2	<i>Percent</i> 0.4	<i>1,000 Head</i> 36	<i>1,000 Head</i> 15	<i>1,000 Head</i> 2	<i>1,000 Head</i> 44	<i>Number</i> 6	<i>Number</i> 4

<sup>1</sup> Based on records for the past 10 January-March quarters.

## ACCESS TO REPORTS!!

---

For your convenience, there are several ways to obtain NASS reports, data products, and services:

### INTERNET ACCESS

All NASS reports are available free of charge on the worldwide Internet. For access, connect to the Internet and go to the NASS Home Page at: [www.usda.gov/nass/](http://www.usda.gov/nass/). Select "Today's Reports" or Publications and then Reports Calendar or Publications and then Search, by Title or Subject.

### E-MAIL SUBSCRIPTION

All NASS reports are available by subscription free of charge direct to your e-mail address. Starting with the NASS Home Page at [www.usda.gov/nass/](http://www.usda.gov/nass/), click on **Publications**, then click on the **Subscribe by E-mail** button which takes you to the page describing e-mail delivery of reports. Finally, click on **Go to the Subscription Page** and follow the instructions.

-----

### PRINTED REPORTS OR DATA PRODUCTS

**CALL OUR TOLL-FREE ORDER DESK: 800-999-6779 (U.S. and Canada)**  
**Other areas, please call 703-605-6220      FAX: 703-605-6900**  
**(Visa, MasterCard, check, or money order acceptable for payment.)**

-----

### ASSISTANCE

For **assistance** with general agricultural statistics or further information about NASS or its products or services, contact the **Agricultural Statistics Hotline** at **800-727-9540**, 7:30 a.m. to 4:00 p.m. ET, or e-mail: [nass@nass.usda.gov](mailto:nass@nass.usda.gov).

The U.S. Department of Agriculture (USDA) prohibits discrimination in all its programs and activities on the basis of race, color, national origin, sex, religion, age, disability, political beliefs, sexual orientation, and marital or family status. (Not all prohibited bases apply to all programs.) Persons with disabilities who require alternative means for communication of program information (Braille, large print, audiotope, etc.) should contact USDA's TARGET Center at 202-720-2600 (voice and TDD).

To file a complaint of discrimination, write USDA, Director, Office of Civil Rights, Room 326-W, Whitten Building, 14th and Independence Avenue, SW, Washington, DC 20250-9410 or call 202-720-5964 (voice and TDD). USDA is an equal opportunity provider and employer.