

Released June 16, 2005, by the National Agricultural Statistics Service (NASS), Agricultural Statistics Board, U.S. Department of Agriculture. For information on *Milk Production* call Ty Kalas at 202-690-3236, office hours 7:30 a.m. to 4:00 p.m. ET.

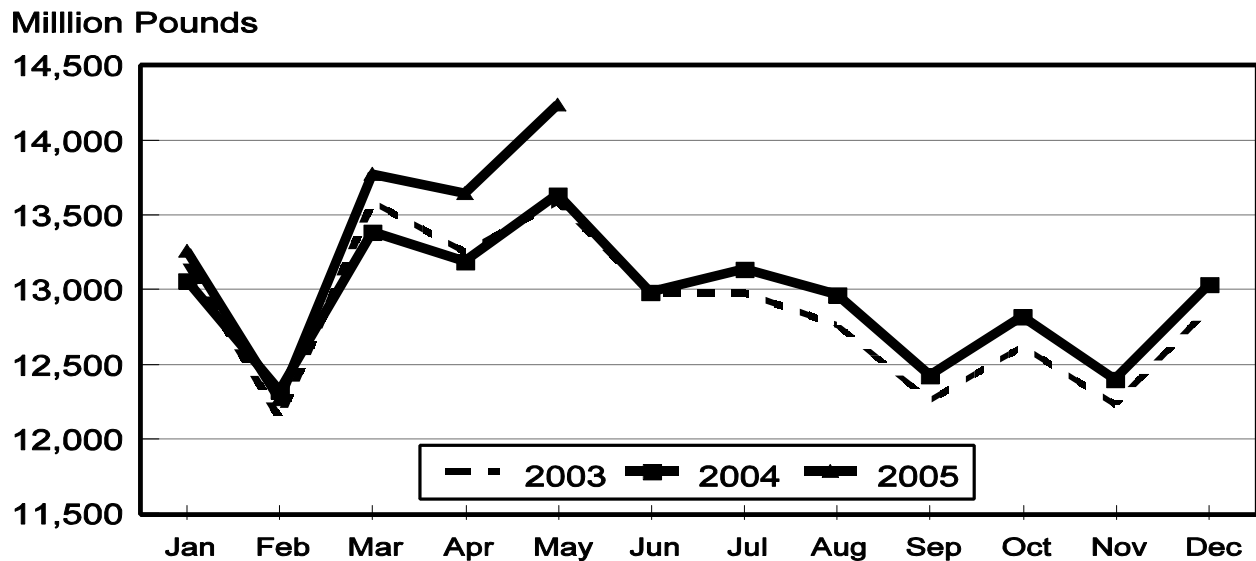
May Milk Production Up 4.4 Percent

Milk production in the 23 major States during May totaled 14.2 billion pounds, up 4.4 percent from May 2004. April revised production, at 13.6 billion pounds, was up 3.4 percent from April 2004. The April revision represented an increase of 0.3 percent or 35 million pounds from last month's preliminary production estimate.

Production per cow in the 23 major States averaged 1,754 pounds for May, 62 pounds above May 2004.

The number of milk cows on farms in the 23 major States was 8.12 million head, 54,000 head more than May 2004, and 9,000 head more than April 2005.

Monthly Milk Production 23 States



Milk Cows and Production: By Quarter, United States, 2004-2005 ¹

Quarter	Milk Cows ²		Milk Per Cow ³		Milk Production ³		
	2004	2005	2004	2005	2004	2005	Change From 2004
	<i>1,000 Head</i>	<i>1,000 Head</i>	<i>Pounds</i>	<i>Pounds</i>	<i>Million Pounds</i>	<i>Million Pounds</i>	<i>Percent</i>
Jan-Mar	8,993	8,995	4,755	4,805	42,759	43,218	1.1
Apr-Jun	9,001		4,869		43,824		
Jul-Sep	9,027		4,679		42,239		
Oct-Dec	9,019		4,655		41,983		
Annual	9,010		18,957		170,805		

¹ May not add due to rounding.

² Includes dry cows, excludes heifers not yet fresh.

³ Excludes milk sucked by calves.

Milk Cows and Production: By Month, 23 Selected States, 2004-2005 ¹

Month	Milk Cows ²		Milk Per Cow ³		Milk Production ³		
	2004	2005	2004	2005	2004	2005	Change From 2004
	<i>1,000 Head</i>	<i>1,000 Head</i>	<i>Pounds</i>	<i>Pounds</i>	<i>Million Pounds</i>	<i>Million Pounds</i>	<i>Percent</i>
Jan	8,044	8,083	1,624	1,640	13,061	13,258	1.5
Feb	8,051	8,076	1,531	1,519	12,329	12,270	-0.5
Mar	8,059	8,095	1,661	1,702	13,387	13,779	2.9
Apr	8,063	8,109	1,636	1,683	13,194	13,647	3.4
May	8,064	8,118	1,692	1,754	13,641	14,240	4.4
Jun	8,083		1,607		12,988		
Jul	8,096		1,623		13,143		
Aug	8,102		1,601		12,970		
Sep	8,104		1,533		12,426		
Oct	8,103		1,583		12,824		
Nov	8,102		1,531		12,404		
Dec	8,097		1,610		13,037		
Annual	8,081		19,232		155,404		

¹ 2005 revised.

² Includes dry cows, excludes heifers not yet fresh.

³ Excludes milk sucked by calves.

Estimated Milk Cows and Production: By Month, United States, 2004-2005 ¹

Month	Milk Cows ²		Milk Per Cow ³		Milk Production ³		
	2004	2005	2004	2005	2004	2005	Change From 2004
	<i>1,000 Head</i>	<i>1,000 Head</i>	<i>Pounds</i>	<i>Pounds</i>	<i>Million Pounds</i>	<i>Million Pounds</i>	<i>Percent</i>
Jan	8,985	8,993	1,603	1,621	14,402	14,577	1.2
Feb	8,993	8,982	1,512	1,502	13,595	13,491	-0.8
Mar	9,002	9,009	1,640	1,682	14,762	15,150	2.6
Apr	8,999	9,028	1,613	1,659	14,519	14,975	3.1
May	8,991	9,040	1,670	1,729	15,012	15,626	4.1
Jun	9,014		1,586		14,293		
Jul	9,028		1,596		14,405		
Aug	9,029		1,574		14,215		
Sep	9,025		1,509		13,619		
Oct	9,023		1,559		14,070		
Nov	9,021		1,509		13,610		
Dec	9,013		1,587		14,303		
Annual	9,010		18,957		170,805		

¹ 2005 revised.

² Includes dry cows, excludes heifers not yet fresh.

³ Excludes milk sucked by calves.

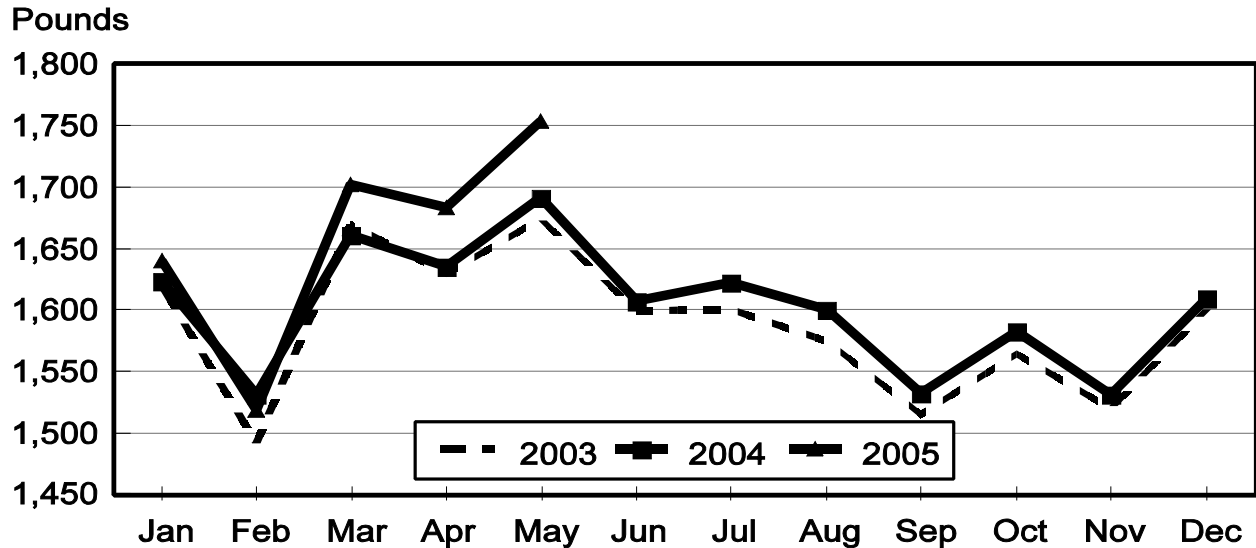
Milk Cows and Production: By State, May 2004-2005

State	Milk Cows ¹		Milk Per Cow ²		Milk Production ²		
	2004	2005	2004	2005	2004	2005	Change From 2004
	<i>1,000 Head</i>	<i>1,000 Head</i>	<i>Pounds</i>	<i>Pounds</i>	<i>Million Pounds</i>	<i>Million Pounds</i>	<i>Percent</i>
AZ	155	163	2,095	2,090	325	341	4.9
CA	1,720	1,754	1,830	1,875	3,148	3,289	4.5
CO	102	104	1,830	1,950	187	203	8.6
FL	139	138	1,525	1,580	212	218	2.8
ID	417	445	1,850	1,920	771	854	10.8
IL	108	104	1,620	1,660	175	173	-1.1
IN	149	155	1,800	1,800	268	279	4.1
IA	195	186	1,760	1,820	343	339	-1.2
KS	114	112	1,710	1,815	195	203	4.1
KY	110	107	1,190	1,195	131	128	-2.3
MI	301	310	1,795	1,900	540	589	9.1
MN	460	455	1,555	1,610	715	733	2.5
MO	124	119	1,380	1,390	171	165	-3.5
NM	327	323	1,810	1,880	592	607	2.5
NY	655	646	1,580	1,665	1,035	1,076	4.0
OH	263	270	1,540	1,570	405	424	4.7
OR	120	121	1,665	1,680	200	203	1.5
PA	557	565	1,605	1,675	894	946	5.8
TX	317	320	1,720	1,830	545	586	7.5
VT	145	144	1,545	1,650	224	238	6.3
VA	105	105	1,455	1,550	153	163	6.5
WA	239	239	1,985	2,060	474	492	3.8
WI	1,242	1,233	1,560	1,615	1,938	1,991	2.7
23-State Total	8,064	8,118	1,692	1,754	13,641	14,240	4.4

¹ Includes dry cows, excludes heifers not yet fresh.

² Excludes milk sucked by calves.

Monthly Milk per Cow 23 States



Milk Cows and Production: By State, April 2004-2005 ¹

State	Milk Cows ²		Milk per Cow ³		Milk Production ³		
	2004	2005	2004	2005	2004	2005	Change From 2004
	<i>1,000 Head</i>	<i>1,000 Head</i>	<i>Pounds</i>	<i>Pounds</i>	<i>Million Pounds</i>	<i>Million Pounds</i>	<i>Percent</i>
AZ	155	164	2,090	2,050	324	336	3.7
CA	1,716	1,751	1,790	1,820	3,072	3,187	3.7
CO	101	103	1,800	1,865	182	192	5.5
FL	138	138	1,515	1,575	209	217	3.8
ID	414	443	1,770	1,850	733	820	11.9
IL	108	105	1,580	1,605	171	169	-1.2
IN	149	155	1,750	1,690	261	262	0.4
IA	195	187	1,700	1,740	332	325	-2.1
KS	113	111	1,675	1,755	189	195	3.2
KY	109	107	1,155	1,150	126	123	-2.4
MI	301	309	1,745	1,800	525	556	5.9
MN	465	455	1,480	1,540	688	701	1.9
MO	124	119	1,370	1,350	170	161	-5.3
NM	327	323	1,730	1,780	566	575	1.6
NY	658	646	1,500	1,565	987	1,011	2.4
OH	261	269	1,500	1,500	392	404	3.1
OR	120	121	1,590	1,610	191	195	2.1
PA	561	563	1,550	1,600	870	901	3.6
TX	317	319	1,705	1,780	540	568	5.2
VT	145	144	1,485	1,570	215	226	5.1
VA	105	105	1,450	1,485	152	156	2.6
WA	239	239	1,905	1,985	455	474	4.2
WI	1,242	1,233	1,485	1,535	1,844	1,893	2.7
23-State Total	8,063	8,109	1,636	1,683	13,194	13,647	3.4

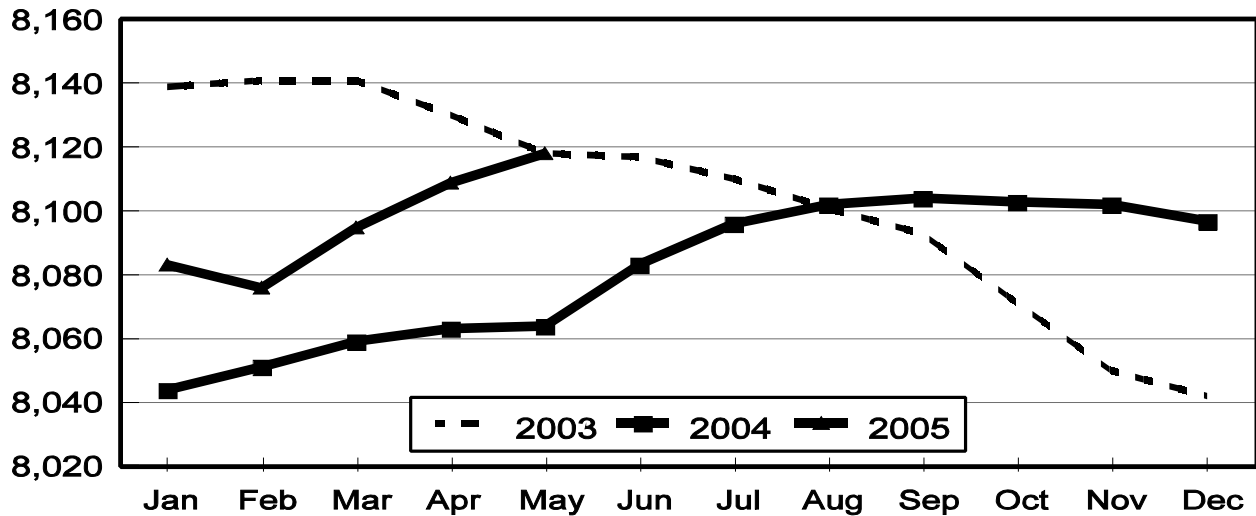
¹ 2005 revised.

² Includes dry cows, excludes heifers not yet fresh.

³ Excludes milk sucked by calves.

Monthly Milk Cows 23 States

Thousand Head



Reliability Statement

Survey Procedures: Primary data used to determine these estimates were obtained from a sample of producers. Individual States maintain a list of all known milk producers and information on the size of their herd. States use all known sources of producers to ensure that their lists are as complete as possible. Generally, all large producers and a sample of small producers are included in the survey. Questionnaires are mailed to producers near the end of the month to obtain data for the first day of the month. Additional reports are obtained by telephone, as needed, to supplement the mail response. Where feasible, States utilize state and federal administrative data, rather than conduct a monthly or quarterly survey, to estimate milk production. This eliminates duplication of data gathering by different government agencies. Indications of milk cow inventory are also obtained in the January and July Cattle Surveys.

Estimation Procedures: State offices prepare these estimates by using a combination of survey indications, historic trends, and any available administrative data. Individual State estimates are reviewed by the Agricultural Statistics Board for reasonableness.

Revision Policy: Milk production, rate per cow, and number of cows are subject to revision the following month for monthly States or the following quarter for the quarterly States. Normally, Federal Market Order sales are the main basis for revisions. However, data for all orders are not available in time for this revision. Estimates are again subject to revisions in February each year based on additional administrative data. In the event that additional changes are necessary, a third revision is possible in February the following year. Estimates are again reviewed after data from the five-year Census of Agriculture are available. No revisions are made after that date.

Reliability: Since all operations with dairy animals are not included in the sample, survey estimates are subject to sampling variability. Survey results are also subject to non-sampling errors such as omissions, duplications, and mistakes in reporting, recording, and processing the data. The effects of these errors cannot be measured directly. They are minimized through rigid quality controls in the data collection process and through a careful review of all reported data for consistency and reasonableness.

To assist users in evaluating the reliability of the estimates in this report, the "Root Mean Square Error" is shown for selected items on the next page. The "Root Mean Square Error" is a statistical measure based on past performance and is computed using the differences between first and final estimates. The "Root Mean Square Error" for milk cow inventory estimates over the past 10 January-March quarters is 0.2 percent. This means that chances are 2 out of 3 that the final January-March estimate will not be above or below the current estimate of 9.00 million head by more than 0.2 percent. Chances are 9 out of 10 that the difference will not exceed 0.4 percent.

Reliability of January-March Milk Estimates ¹

Item	Root Mean Square Error	90% Confidence Level		Difference Between First and Latest Estimates			Quarters	
				Average	Smallest	Largest	First Above Latest	First Below Latest
				<i>Million Pounds</i>	<i>Million Pounds</i>	<i>Million Pounds</i>	<i>Number</i>	<i>Number</i>
Milk Production	<i>Percent</i> 0.4	<i>Percent</i> 0.7	<i>Million Pounds</i> 303	<i>Million Pounds</i> 136	<i>Million Pounds</i> 10	<i>Million Pounds</i> 375	<i>Number</i> 6	<i>Number</i> 4
All Milk Cows	<i>Percent</i> 0.2	<i>Percent</i> 0.4	<i>1,000 Head</i> 36	<i>1,000 Head</i> 15	<i>1,000 Head</i> 2	<i>1,000 Head</i> 44	<i>Number</i> 6	<i>Number</i> 4

¹ Based on records for the past 10 January-March quarters.

ACCESS TO REPORTS!!

For your convenience, there are several ways to obtain NASS reports, data products, and services:

INTERNET ACCESS

All NASS reports are available free of charge on the worldwide Internet. For access, connect to the Internet and go to the NASS Home Page at: www.usda.gov/nass/. Select "Today's Reports" or Publications and then Reports Calendar or Publications and then Search, by Title or Subject.

E-MAIL SUBSCRIPTION

All NASS reports are available by subscription free of charge direct to your e-mail address. Starting with the NASS Home Page at www.usda.gov/nass/, click on **Publications**, then click on the **Subscribe by E-mail** button which takes you to the page describing e-mail delivery of reports. Finally, click on **Go to the Subscription Page** and follow the instructions.

PRINTED REPORTS OR DATA PRODUCTS

CALL OUR TOLL-FREE ORDER DESK: 800-999-6779 (U.S. and Canada)
Other areas, please call 703-605-6220 FAX: 703-605-6900
(Visa, MasterCard, check, or money order acceptable for payment.)

ASSISTANCE

For **assistance** with general agricultural statistics or further information about NASS or its products or services, contact the **Agricultural Statistics Hotline** at **800-727-9540**, 7:30 a.m. to 4:00 p.m. ET, or e-mail: nass@nass.usda.gov.

The U.S. Department of Agriculture (USDA) prohibits discrimination in all its programs and activities on the basis of race, color, national origin, sex, religion, age, disability, political beliefs, sexual orientation, and marital or family status. (Not all prohibited bases apply to all programs.) Persons with disabilities who require alternative means for communication of program information (Braille, large print, audiotape, etc.) should contact USDA's TARGET Center at 202-720-2600 (voice and TDD).

To file a complaint of discrimination, write USDA, Director, Office of Civil Rights, Room 326-W, Whitten Building, 14th and Independence Avenue, SW, Washington, DC 20250-9410 or call 202-720-5964 (voice and TDD). USDA is an equal opportunity provider and employer.