

Released July 18, 2005, by the National Agricultural Statistics Service (NASS), Agricultural Statistics Board, U.S. Department of Agriculture. For information on *Milk Production* call Ann Summa at 202-720-3278, office hours 7:30 a.m. to 4:00 p.m. ET.

June Milk Production Up 5.4 Percent

Milk production in the 23 major States during June totaled 13.7 billion pounds, up 5.4 percent from June 2004. May revised production, at 14.3 billion pounds, was up 4.6 percent from May 2004. The May revision represented an increase of 26 million pounds or 0.2 percent from last month's preliminary production estimate.

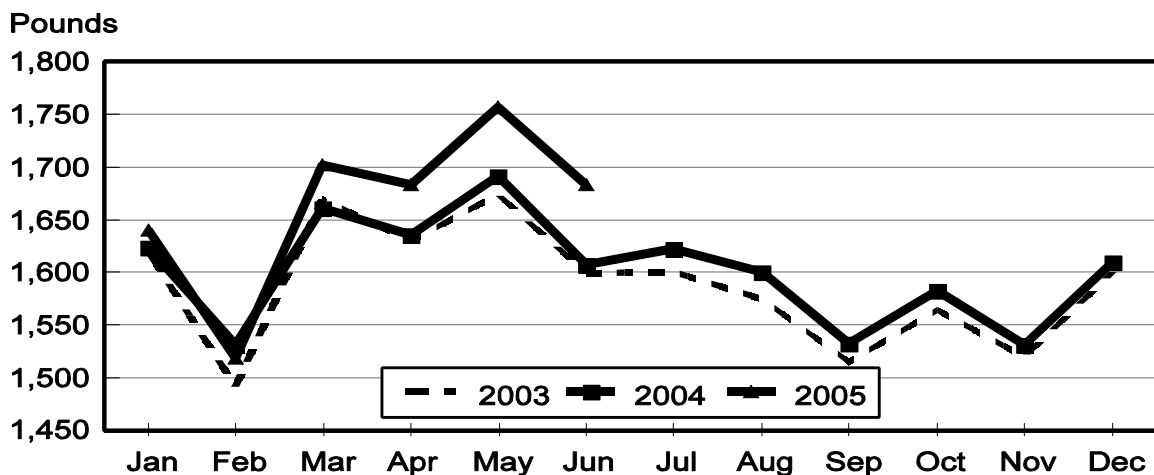
Production per cow in the 23 major States averaged 1,683 pounds for June, 76 pounds above June 2004.

The number of milk cows on farms in the 23 major States was 8.13 million head, 47,000 head more than June 2004, and 9,000 head more than May 2005.

April-June Milk Production Up 4.1 Percent

Milk production in the U.S. during the April-June quarter totaled 45.6 billion pounds, up 4.1 percent from the April-June quarter last year. The average number of milk cows in the U.S. during the quarter was 9.04 million head, 34,000 head more than the same period last year.

Monthly Milk per Cow 23 States



Milk Cows and Production: By Quarter, United States, 2004-2005 ¹

Quarter	Milk Cows ²		Milk Per Cow ³		Milk Production ³		
	2004	2005	2004	2005	2004	2005	Change From 2004
	<i>1,000 Head</i>	<i>1,000 Head</i>	<i>Pounds</i>	<i>Pounds</i>	<i>Million Pounds</i>	<i>Million Pounds</i>	<i>Percent</i>
Jan-Mar	8,993	8,996	4,755	4,807	42,759	43,242	1.1
Apr-Jun	9,001	9,035	4,869	5,051	43,824	45,633	4.1
Jul-Sep	9,027		4,679		42,239		
Oct-Dec	9,019		4,655		41,983		
Annual	9,010		18,957		170,805		

¹ May not add due to rounding.

² Includes dry cows, excludes heifers not yet fresh.

³ Excludes milk sucked by calves.

Milk Cows and Production: By Month, 23 Selected States, 2004-2005 ¹

Month	Milk Cows ²		Milk Per Cow ³		Milk Production ³		
	2004	2005	2004	2005	2004	2005	Change From 2004
	<i>1,000 Head</i>	<i>1,000 Head</i>	<i>Pounds</i>	<i>Pounds</i>	<i>Million Pounds</i>	<i>Million Pounds</i>	<i>Percent</i>
Jan	8,044	8,083	1,624	1,640	13,061	13,258	1.5
Feb	8,051	8,076	1,531	1,519	12,329	12,270	-0.5
Mar	8,059	8,095	1,661	1,702	13,387	13,779	2.9
Apr	8,063	8,109	1,636	1,683	13,194	13,647	3.4
May	8,064	8,121	1,692	1,757	13,641	14,266	4.6
Jun	8,083	8,130	1,607	1,683	12,988	13,684	5.4
Jul	8,096		1,623		13,143		
Aug	8,102		1,601		12,970		
Sep	8,104		1,533		12,426		
Oct	8,103		1,583		12,824		
Nov	8,102		1,531		12,404		
Dec	8,097		1,610		13,037		
Annual	8,081		19,232		155,404		

¹ 2005 revised.

² Includes dry cows, excludes heifers not yet fresh.

³ Excludes milk sucked by calves.

Estimated Milk Cows and Production: By Month, United States, 2004-2005 ¹

Month	Milk Cows ²		Milk Per Cow ³		Milk Production ³		
	2004	2005	2004	2005	2004	2005	Change From 2004
	<i>1,000 Head</i>	<i>1,000 Head</i>	<i>Pounds</i>	<i>Pounds</i>	<i>Million Pounds</i>	<i>Million Pounds</i>	<i>Percent</i>
Jan	8,985	8,995	1,603	1,622	14,402	14,586	1.3
Feb	8,993	8,984	1,512	1,502	13,595	13,498	-0.7
Mar	9,002	9,009	1,640	1,683	14,762	15,158	2.7
Apr	8,999	9,021	1,613	1,660	14,519	14,971	3.1
May	8,991	9,035	1,670	1,732	15,012	15,650	4.2
Jun	9,014	9,048	1,586	1,659	14,293	15,012	5.0
Jul	9,028		1,596		14,405		
Aug	9,029		1,574		14,215		
Sep	9,025		1,509		13,619		
Oct	9,023		1,559		14,070		
Nov	9,021		1,509		13,610		
Dec	9,013		1,587		14,303		
Annual	9,010		18,957		170,805		

¹ 2005 revised.

² Includes dry cows, excludes heifers not yet fresh.

³ Excludes milk sucked by calves.

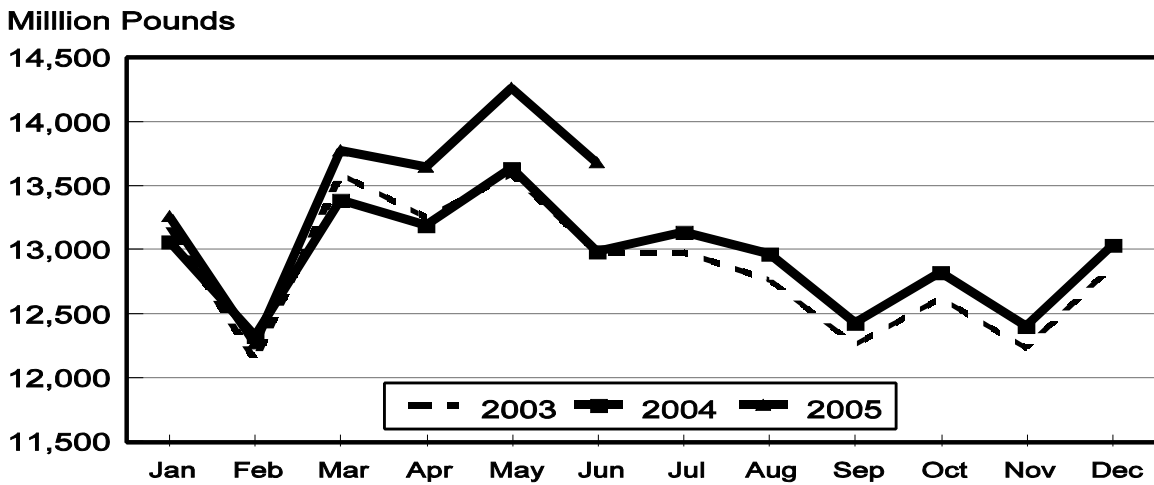
Milk Cows and Production: By State, June 2004-2005

State	Milk Cows ¹		Milk Per Cow ²		Milk Production ²		
	2004	2005	2004	2005	2004	2005	Change From 2004
	<i>1,000 Head</i>	<i>1,000 Head</i>	<i>Pounds</i>	<i>Pounds</i>	<i>Million Pounds</i>	<i>Million Pounds</i>	<i>Percent</i>
AZ	155	162	1,955	1,950	303	316	4.3
CA	1,724	1,757	1,755	1,810	3,026	3,180	5.1
CO	103	105	1,750	1,895	180	199	10.6
FL	139	137	1,395	1,470	194	201	3.6
ID	422	449	1,800	1,890	760	849	11.7
IL	108	104	1,540	1,600	166	166	
IN	150	156	1,650	1,715	248	268	8.1
IA	194	187	1,630	1,720	316	322	1.9
KS	115	112	1,635	1,760	188	197	4.8
KY	112	107	1,055	1,105	118	118	
MI	302	312	1,755	1,825	530	569	7.4
MN	460	455	1,480	1,540	681	701	2.9
MO	124	118	1,250	1,270	155	150	-3.2
NM	328	325	1,755	1,840	576	598	3.8
NY	656	647	1,490	1,575	977	1,019	4.3
OH	265	270	1,440	1,480	382	400	4.7
OR	120	121	1,615	1,630	194	197	1.5
PA	557	563	1,495	1,595	833	898	7.8
TX	320	320	1,570	1,720	502	550	9.6
VT	145	143	1,495	1,565	217	224	3.2
VA	105	105	1,350	1,420	142	149	4.9
WA	238	240	1,920	1,975	457	474	3.7
WI	1,241	1,235	1,485	1,570	1,843	1,939	5.2
23-State Total	8,083	8,130	1,607	1,683	12,988	13,684	5.4

¹ Includes dry cows, excludes heifers not yet fresh.

² Excludes milk sucked by calves.

**Monthly Milk Production
23 States**



Milk Cows and Production: By State, May 2004-2005 ¹

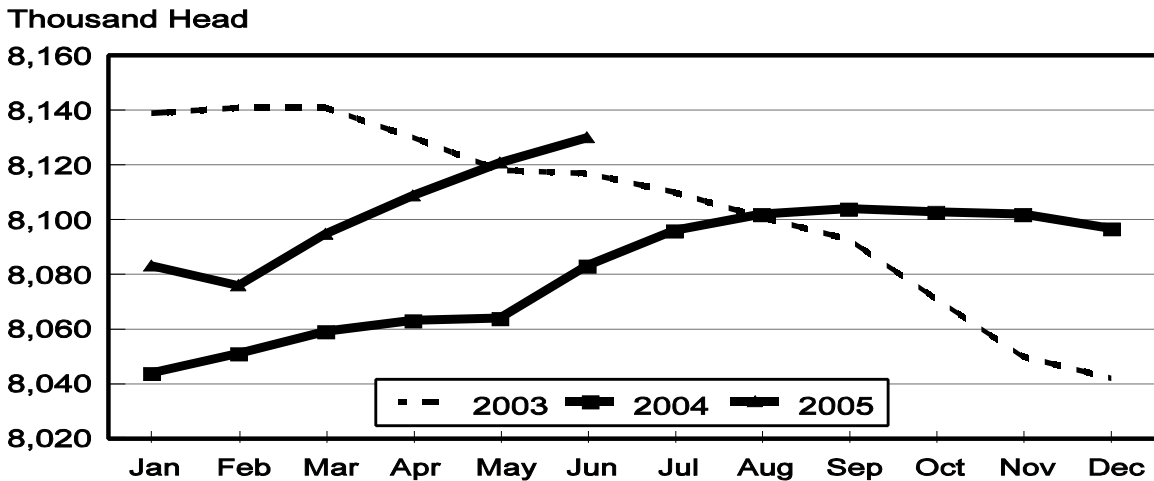
State	Milk Cows ²		Milk per Cow ³		Milk Production ³		
	2004	2005	2004	2005	2004	2005	Change From 2004
	<i>1,000 Head</i>	<i>1,000 Head</i>	<i>Pounds</i>	<i>Pounds</i>	<i>Million Pounds</i>	<i>Million Pounds</i>	<i>Percent</i>
AZ	155	163	2,095	2,090	325	341	4.9
CA	1,720	1,754	1,830	1,875	3,148	3,289	4.5
CO	102	104	1,830	1,950	187	203	8.6
FL	139	138	1,525	1,580	212	218	2.8
ID	417	445	1,850	1,930	771	859	11.4
IL	108	104	1,620	1,660	175	173	-1.1
IN	149	155	1,800	1,800	268	279	4.1
IA	195	186	1,760	1,820	343	339	-1.2
KS	114	112	1,710	1,815	195	203	4.1
KY	110	107	1,190	1,195	131	128	-2.3
MI	301	311	1,795	1,910	540	594	10.0
MN	460	455	1,555	1,610	715	733	2.5
MO	124	119	1,380	1,390	171	165	-3.5
NM	327	323	1,810	1,880	592	607	2.5
NY	655	646	1,580	1,665	1,035	1,076	4.0
OH	263	270	1,540	1,570	405	424	4.7
OR	120	121	1,665	1,660	200	201	0.5
PA	557	565	1,605	1,675	894	946	5.8
TX	317	320	1,720	1,830	545	586	7.5
VT	145	144	1,545	1,650	224	238	6.3
VA	105	105	1,455	1,535	153	161	5.2
WA	239	240	1,985	2,050	474	492	3.8
WI	1,242	1,234	1,560	1,630	1,938	2,011	3.8
23-State Total	8,064	8,121	1,692	1,757	13,641	14,266	4.6

¹ 2005 revised.

² Includes dry cows, excludes heifers not yet fresh.

³ Excludes milk sucked by calves.

**Monthly Milk Cows
23 States**



**Milk Cows and Production: By State and United States,
Revised January-March, 2004-2005**

State	Jan-Mar Milk Cows ¹		Jan-Mar Milk Production ²		Change From 2004
	2004	2005	2004	2005	
	<i>1,000 Head</i>	<i>1,000 Head</i>	<i>Million Pounds</i>	<i>Million Pounds</i>	<i>Percent</i>
AL	17	16	71	64	-9.9
AK	1.2	1.2	3.6	3.6	
AZ	155	164	945	965	2.1
AR	25	23	86	82	-4.7
CA	1,706	1,743	8,956	9,151	2.2
CO	100	101	532	554	4.1
CT	21	20	102	99	-2.9
DE	7.5	7.5	34.0	34.0	
FL	139	139	612	640	4.6
GA	84	83	381	379	-0.5
HI	6.5	5.8	21.9	17.6	-19.6
ID	412	438	2,161	2,361	9.3
IL	108	105	516	503	-2.5
IN	146	154	741	746	0.7
IA	195	187	976	947	-3.0
KS	112	109	551	558	1.3
KY	111	109	366	354	-3.3
LA	40	36	139	127	-8.6
ME	34	32	151	147	-2.6
MD	76	73	300	299	-0.3
MA	17	17	74	73	-1.4
MI	300	307	1,575	1,605	1.9
MN	465	457	2,060	2,041	-0.9
MS	28	26	109	109	
MO	124	118	470	459	-2.3
MT	18	18	85	89	4.7
NE	61	60	267	268	0.4
NV	25	25	127	128	0.8
NH	16	16	76	76	
NJ	12	12	52	49	-5.8
NM	326	320	1,690	1,620	-4.1
NY	659	649	2,901	2,935	1.2
NC	58	55	264	253	-4.2
ND	33	33	129	128	-0.8
OH	259	267	1,122	1,163	3.7
OK	80	75	330	311	-5.8
OR	119	120	548	552	0.7
PA	564	561	2,534	2,560	1.0
RI	1.2	1.0	5.2	4.5	-13.5
SC	17	18	79	81	2.5
SD	80	81	333	350	5.1
TN	77	72	310	295	-4.8
TX	317	318	1,578	1,592	0.9
UT	88	88	387	404	4.4
VT	145	143	651	655	0.6
VA	105	105	441	452	2.5
WA	240	236	1,350	1,372	1.6
WV	13	13	50	48	-4.0
WI	1,245	1,234	5,501	5,522	0.4
WY	4.1	4.4	14.8	15.8	6.8
US ³	8,993	8,996	42,759	43,242	1.1

¹ Includes dry cows, excludes heifers not yet fresh.

² Excludes milk sucked by calves.

³ May not add due to rounding.

**Milk Cows and Production: By State and United States,
Preliminary April-June, 2004-2005**

State	Apr-Jun Milk Cows ¹		Apr-Jun Milk Production ²		Change From 2004
	2004	2005	2004	2005	
	<i>1,000 Head</i>	<i>1,000 Head</i>	<i>Million Pounds</i>	<i>Million Pounds</i>	<i>Percent</i>
AL	17	16	66	63	-4.5
AK	1.2	1.2	3.8	3.8	
AZ	155	163	952	993	4.3
AR	24	23	85	82	-3.5
CA	1,720	1,754	9,246	9,656	4.4
CO	102	104	549	594	8.2
CT	20	20	100	101	1.0
DE	7.5	7.5	33.0	35.0	6.1
FL	139	138	615	636	3.4
GA	84	82	382	382	
HI	6.2	5.4	22.2	19.0	-14.4
ID	418	446	2,264	2,528	11.7
IL	108	104	512	508	-0.8
IN	149	155	777	809	4.1
IA	195	187	991	986	-0.5
KS	114	112	572	595	4.0
KY	110	107	375	369	-1.6
LA	38	36	131	124	-5.3
ME	34	33	157	155	-1.3
MD	75	72	300	300	
MA	17	17	76	77	1.3
MI	301	311	1,595	1,719	7.8
MN	462	455	2,084	2,135	2.4
MS	27	26	104	109	4.8
MO	124	119	496	476	-4.0
MT	18	19	88	95	8.0
NE	60	60	266	279	4.9
NV	25	25	125	137	9.6
NH	16	16	78	80	2.6
NJ	12	12	52	51	-1.9
NM	327	324	1,734	1,780	2.7
NY	656	646	2,999	3,106	3.6
NC	57	54	259	251	-3.1
ND	34	33	136	135	-0.7
OH	263	270	1,179	1,228	4.2
OK	79	75	329	321	-2.4
OR	120	121	585	593	1.4
PA	558	564	2,597	2,745	5.7
RI	1.2	1.0	5.2	4.9	-5.8
SC	17	18	76	80	5.3
SD	81	81	343	369	7.6
TN	76	72	310	295	-4.8
TX	318	320	1,587	1,704	7.4
UT	87	89	409	422	3.2
VT	145	144	656	688	4.9
VA	105	105	447	466	4.3
WA	239	240	1,386	1,440	3.9
WV	13	13	49	48	-2.0
WI	1,242	1,234	5,625	5,843	3.9
WY	4.2	4.5	16.0	17.1	6.9
US ³	9,001	9,035	43,824	45,633	4.1

¹ Includes dry cows, excludes heifers not yet fresh.

² Excludes milk sucked by calves.

³ May not add due to rounding.

Reliability Statement

Survey Procedures: Primary data used to determine these estimates were obtained from a sample of producers. Individual States maintain a list of all known milk producers and information on the size of their herd. States use all known sources of producers to ensure that their lists are as complete as possible. Generally, all large producers and a sample of small producers are included in the survey. Questionnaires are mailed to producers near the end of the month to obtain data for the first day of the month. Additional reports are obtained by telephone, as needed, to supplement the mail response. Where feasible, States utilize state and federal administrative data, rather than conduct a monthly or quarterly survey, to estimate milk production. This eliminates duplication of data gathering by different government agencies. Indications of milk cow inventory are also obtained in the January and July Cattle Surveys.

Estimation Procedures: State offices prepare these estimates by using a combination of survey indications, historic trends, and any available administrative data. Individual State estimates are reviewed by the Agricultural Statistics Board for reasonableness.

Revision Policy: Milk production, rate per cow, and number of cows are subject to revision the following month for monthly States or the following quarter for the quarterly States. Normally, Federal Market Order sales are the main basis for revisions. However, data for all orders are not available in time for this revision. Estimates are again subject to revisions in February each year based on additional administrative data. In the event that additional changes are necessary, a third revision is possible in February the following year. Estimates are again reviewed after data from the five-year Census of Agriculture are available. No revisions are made after that date.

Reliability: Since all operations with dairy animals are not included in the sample, survey estimates are subject to sampling variability. Survey results are also subject to non-sampling errors such as omissions, duplications, and mistakes in reporting, recording, and processing the data. The effects of these errors cannot be measured directly. They are minimized through rigid quality controls in the data collection process and through a careful review of all reported data for consistency and reasonableness.

To assist users in evaluating the reliability of the estimates in this report, the "Root Mean Square Error" is shown for selected items on the next page. The "Root Mean Square Error" is a statistical measure based on past performance and is computed using the differences between first and final estimates. The "Root Mean Square Error" for milk cow inventory estimates over the past 10 April-June quarters is 0.2 percent. This means that chances are 2 out of 3 that the final April-June estimate will not be above or below the current estimate of 9.04 million head by more than 0.2 percent. Chances are 9 out of 10 that the difference will not exceed 0.4 percent.

Reliability of April-June Milk Estimates ¹

Item	Root Mean Square Error	90% Confidence Level		Difference Between First and Latest Estimates			Quarters	
				Average	Smallest	Largest	First Above Latest	First Below Latest
				<i>Million Pounds</i>	<i>Million Pounds</i>	<i>Million Pounds</i>	<i>Number</i>	<i>Number</i>
Milk Production	<i>Percent</i> 0.3	<i>Percent</i> 0.6	<i>Million Pounds</i> 274	<i>Million Pounds</i> 103	<i>Million Pounds</i> 3	<i>Million Pounds</i> 264	<i>Number</i> 5	<i>Number</i> 5
All Milk Cows	<i>Percent</i> 0.2	<i>Percent</i> 0.4	<i>1,000 Head</i> 36	<i>1,000 Head</i> 15	<i>1,000 Head</i> 0	<i>1,000 Head</i> 35	<i>Number</i> 5	<i>Number</i> 4

¹ Based on records for the past 10 April-June quarters.

ACCESS TO REPORTS!!

For your convenience, there are several ways to obtain NASS reports, data products, and services:

INTERNET ACCESS

All NASS reports are available free of charge on the worldwide Internet. For access, connect to the Internet and go to the NASS Home Page at: www.usda.gov/nass/. Select "Today's Reports" or Publications and then Reports Calendar or Publications and then Search, by Title or Subject.

E-MAIL SUBSCRIPTION

All NASS reports are available by subscription free of charge direct to your e-mail address. Starting with the NASS Home Page at www.usda.gov/nass/, click on **Publications**, then click on the **Subscribe by E-mail** button which takes you to the page describing e-mail delivery of reports. Finally, click on **Go to the Subscription Page** and follow the instructions.

PRINTED REPORTS OR DATA PRODUCTS

CALL OUR TOLL-FREE ORDER DESK: 800-999-6779 (U.S. and Canada)
Other areas, please call 703-605-6220 FAX: 703-605-6900
(Visa, MasterCard, check, or money order acceptable for payment.)

ASSISTANCE

For **assistance** with general agricultural statistics or further information about NASS or its products or services, contact the **Agricultural Statistics Hotline** at **800-727-9540**, 7:30 a.m. to 4:00 p.m. ET, or e-mail: nass@nass.usda.gov.

The U.S. Department of Agriculture (USDA) prohibits discrimination in all its programs and activities on the basis of race, color, national origin, sex, religion, age, disability, political beliefs, sexual orientation, and marital or family status. (Not all prohibited bases apply to all programs.) Persons with disabilities who require alternative means for communication of program information (Braille, large print, audiotape, etc.) should contact USDA's TARGET Center at 202-720-2600 (voice and TDD).

To file a complaint of discrimination, write USDA, Director, Office of Civil Rights, Room 326-W, Whitten Building, 14th and Independence Avenue, SW, Washington, DC 20250-9410 or call 202-720-5964 (voice and TDD). USDA is an equal opportunity provider and employer.