

Released September 16, 2005, by the National Agricultural Statistics Service (NASS), Agricultural Statistics Board, U.S. Department of Agriculture. For information on *Milk Production* call Ann Summa at 202-720-3278, office hours 7:30 a.m. to 4:00 p.m. ET.

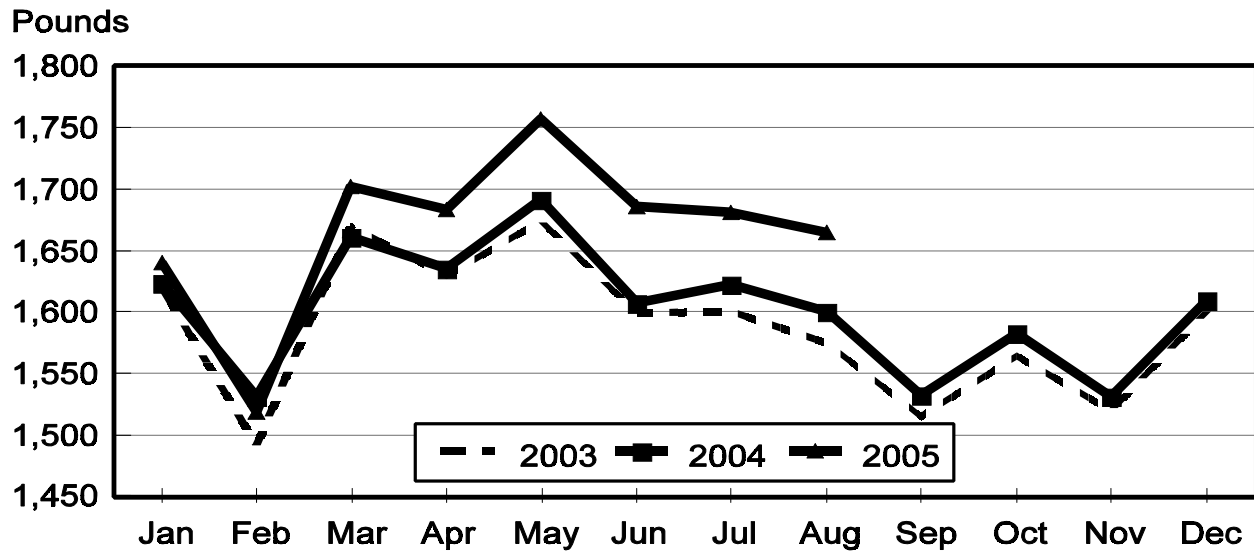
## August Milk Production Up 4.6 Percent

**Milk production** in the 23 major States during August totaled 13.6 billion pounds, up 4.6 percent from August 2004. July revised production, at 13.7 billion pounds, was up 4.2 percent from July 2004. The July revision represented a decrease of 6 million pounds from last month's preliminary production estimate.

**Production per cow** in the 23 major States averaged 1,665 pounds for August, 64 pounds above August 2004.

**The number of milk cows** on farms in the 23 major States was 8.15 million head, 52,000 head more than August 2004, and 9,000 head more than July 2005.

## Monthly Milk per Cow 23 States



**Milk Cows and Production: By Quarter, United States, 2004-2005 <sup>1</sup>**

Quarter	Milk Cows <sup>2</sup>		Milk Per Cow <sup>3</sup>		Milk Production <sup>3</sup>		
	2004	2005	2004	2005	2004	2005	Change From 2004
	<i>1,000 Head</i>	<i>1,000 Head</i>	<i>Pounds</i>	<i>Pounds</i>	<i>Million Pounds</i>	<i>Million Pounds</i>	<i>Percent</i>
Jan-Mar	8,993	8,996	4,755	4,807	42,759	43,242	1.1
Apr-Jun	9,001	9,035	4,869	5,054	43,824	45,662	4.2
Jul-Sep	9,027		4,679		42,239		
Oct-Dec	9,019		4,655		41,983		
Annual	9,010		18,957		170,809		

<sup>1</sup> May not add due to rounding.

<sup>2</sup> Includes dry cows, excludes heifers not yet fresh.

<sup>3</sup> Excludes milk sucked by calves.

**Milk Cows and Production: By Month, 23 Selected States, 2004-2005 <sup>1</sup>**

Month	Milk Cows <sup>2</sup>		Milk Per Cow <sup>3</sup>		Milk Production <sup>3</sup>		
	2004	2005	2004	2005	2004	2005	Change From 2004
	<i>1,000 Head</i>	<i>1,000 Head</i>	<i>Pounds</i>	<i>Pounds</i>	<i>Million Pounds</i>	<i>Million Pounds</i>	<i>Percent</i>
Jan	8,044	8,083	1,624	1,640	13,061	13,258	1.5
Feb	8,051	8,076	1,531	1,519	12,329	12,270	-0.5
Mar	8,059	8,095	1,661	1,702	13,387	13,779	2.9
Apr	8,063	8,109	1,636	1,683	13,194	13,647	3.4
May	8,064	8,121	1,692	1,757	13,641	14,266	4.6
Jun	8,083	8,132	1,607	1,686	12,988	13,712	5.6
Jul	8,096	8,145	1,623	1,681	13,143	13,692	4.2
Aug	8,102	8,154	1,601	1,665	12,970	13,573	4.6
Sep	8,104		1,533		12,426		
Oct	8,103		1,583		12,824		
Nov	8,102		1,531		12,404		
Dec	8,097		1,610		13,037		
Annual	8,081		19,231		155,404		

<sup>1</sup> 2005 revised.

<sup>2</sup> Includes dry cows, excludes heifers not yet fresh.

<sup>3</sup> Excludes milk sucked by calves.

**Estimated Milk Cows and Production: By Month, United States, 2004-2005 <sup>1</sup>**

Month	Milk Cows <sup>2</sup>		Milk Per Cow <sup>3</sup>		Milk Production <sup>3</sup>		
	2004	2005	2004	2005	2004	2005	Change From 2004
	<i>1,000 Head</i>	<i>1,000 Head</i>	<i>Pounds</i>	<i>Pounds</i>	<i>Million Pounds</i>	<i>Million Pounds</i>	<i>Percent</i>
Jan	8,985	8,995	1,603	1,622	14,402	14,586	1.3
Feb	8,993	8,984	1,512	1,502	13,595	13,498	-0.7
Mar	9,002	9,009	1,640	1,683	14,762	15,158	2.7
Apr	8,999	9,023	1,613	1,659	14,519	14,970	3.1
May	8,991	9,036	1,670	1,732	15,012	15,650	4.2
Jun	9,014	9,047	1,586	1,663	14,293	15,042	5.2
Jul	9,028	9,062	1,596	1,651	14,405	14,960	3.9
Aug	9,029	9,074	1,574	1,634	14,215	14,830	4.3
Sep	9,025		1,509		13,619		
Oct	9,023		1,559		14,070		
Nov	9,021		1,509		13,613		
Dec	9,013		1,587		14,304		
Annual	9,010		18,957		170,809		

<sup>1</sup> 2005 revised.

<sup>2</sup> Includes dry cows, excludes heifers not yet fresh.

<sup>3</sup> Excludes milk sucked by calves.

**Milk Cows and Production: By State, August 2004-2005**

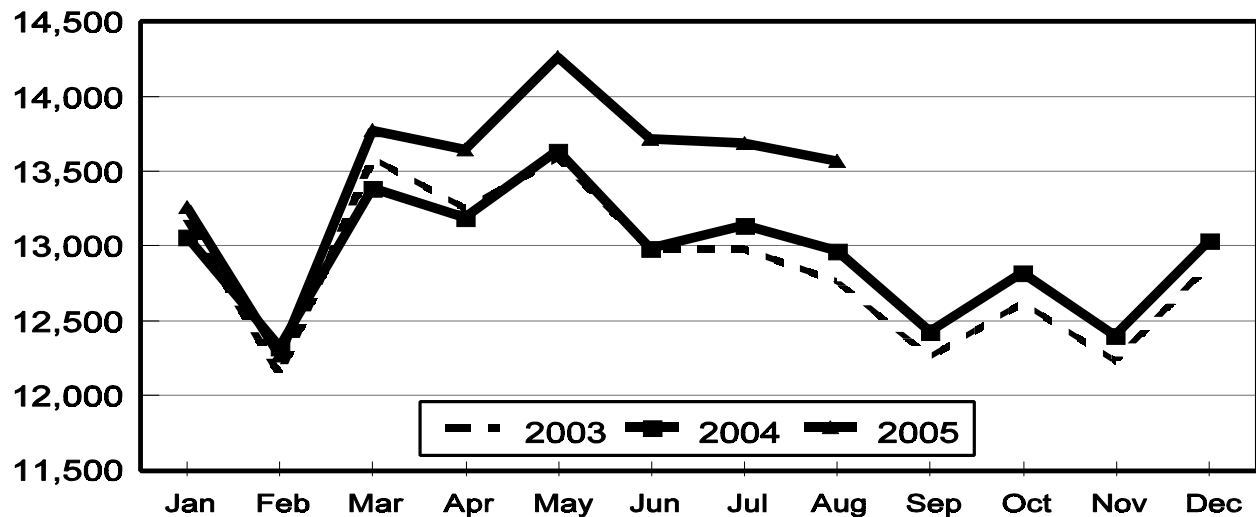
State	Milk Cows <sup>1</sup>		Milk Per Cow <sup>2</sup>		Milk Production <sup>2</sup>		
	2004	2005	2004	2005	2004	2005	Change From 2004
	<i>1,000 Head</i>	<i>1,000 Head</i>	<i>Pounds</i>	<i>Pounds</i>	<i>Million Pounds</i>	<i>Million Pounds</i>	<i>Percent</i>
AZ	163	161	1,710	1,780	279	287	2.9
CA	1,733	1,763	1,775	1,790	3,076	3,156	2.6
CO	103	105	1,835	1,970	189	207	9.5
FL	138	135	1,225	1,240	169	167	-1.2
ID	431	466	1,850	1,940	797	904	13.4
IL	107	104	1,490	1,515	159	158	-0.6
IN	149	156	1,620	1,660	241	259	7.5
IA	192	186	1,640	1,680	315	312	-1.0
KS	115	112	1,600	1,690	184	189	2.7
KY	110	106	1,045	1,030	115	109	-5.2
MI	303	313	1,755	1,815	532	568	6.8
MN	465	455	1,440	1,505	670	685	2.2
MO	121	115	1,210	1,170	146	135	-7.5
NM	327	331	1,740	1,825	569	604	6.2
NY	654	647	1,500	1,600	981	1,035	5.5
OH	266	270	1,430	1,460	380	394	3.7
OR	120	121	1,615	1,590	194	192	-1.0
PA	560	562	1,475	1,575	826	885	7.1
TX	320	320	1,465	1,625	469	520	10.9
VT	145	143	1,495	1,550	217	222	2.3
VA	104	105	1,335	1,370	139	144	3.6
WA	236	242	1,910	1,990	451	482	6.9
WI	1,240	1,236	1,510	1,585	1,872	1,959	4.6
23-State Total	8,102	8,154	1,601	1,665	12,970	13,573	4.6

<sup>1</sup> Includes dry cows, excludes heifers not yet fresh.

<sup>2</sup> Excludes milk sucked by calves.

## Monthly Milk Production 23 States

Million Pounds



**Milk Cows and Production: By State, July 2004-2005 <sup>1</sup>**

State	Milk Cows <sup>2</sup>		Milk per Cow <sup>3</sup>		Milk Production <sup>3</sup>		
	2004	2005	2004	2005	2004	2005	Change From 2004
	<i>1,000 Head</i>	<i>1,000 Head</i>	<i>Pounds</i>	<i>Pounds</i>	<i>Million Pounds</i>	<i>Million Pounds</i>	<i>Percent</i>
AZ	158	162	1,810	1,875	286	304	6.3
CA	1,729	1,760	1,780	1,775	3,078	3,124	1.5
CO	103	105	1,760	1,960	181	206	13.8
FL	139	136	1,340	1,310	186	178	-4.3
ID	427	460	1,860	1,960	794	902	13.6
IL	107	104	1,520	1,580	163	164	0.6
IN	150	156	1,640	1,700	246	265	7.7
IA	193	187	1,660	1,700	320	318	-0.6
KS	115	112	1,625	1,695	187	190	1.6
KY	111	106	1,065	1,065	118	113	-4.2
MI	303	313	1,790	1,840	542	576	6.3
MN	465	455	1,460	1,510	679	687	1.2
MO	122	117	1,240	1,220	151	143	-5.3
NM	328	328	1,770	1,845	581	605	4.1
NY	656	647	1,520	1,600	997	1,035	3.8
OH	265	270	1,450	1,480	384	400	4.2
OR	120	121	1,660	1,640	199	198	-0.5
PA	559	561	1,510	1,610	844	903	7.0
TX	320	320	1,540	1,710	493	547	11.0
VT	145	143	1,525	1,565	221	224	1.4
VA	104	105	1,370	1,390	142	146	2.8
WA	237	241	1,965	2,015	466	486	4.3
WI	1,240	1,236	1,520	1,600	1,885	1,978	4.9
23-State Total	8,096	8,145	1,623	1,681	13,143	13,692	4.2

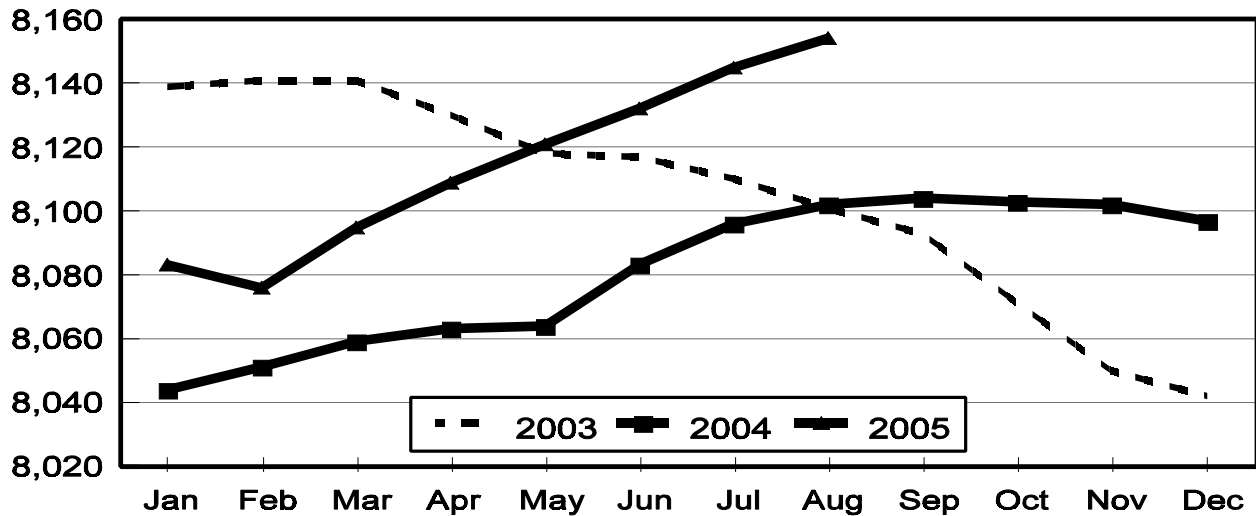
<sup>1</sup> 2005 revised.

<sup>2</sup> Includes dry cows, excludes heifers not yet fresh.

<sup>3</sup> Excludes milk sucked by calves.

## Monthly Milk Cows 23 States

Thousand Head



## Reliability Statement

**Survey Procedures:** Primary data used to determine these estimates were obtained from a sample of producers. Individual States maintain a list of all known milk producers and information on the size of their herd. States use all known sources of producers to ensure that their lists are as complete as possible. Generally, all large producers and a sample of small producers are included in the survey. Questionnaires are mailed to producers near the end of the month to obtain data for the first day of the month. Additional reports are obtained by telephone, as needed, to supplement the mail response. Where feasible, States utilize state and federal administrative data, rather than conduct a monthly or quarterly survey, to estimate milk production. This eliminates duplication of data gathering by different government agencies. Indications of milk cow inventory are also obtained in the January and July Cattle Surveys.

**Estimation Procedures:** State offices prepare these estimates by using a combination of survey indications, historic trends, and any available administrative data. Individual State estimates are reviewed by the Agricultural Statistics Board for reasonableness.

**Revision Policy:** Milk production, rate per cow, and number of cows are subject to revision the following month for monthly States or the following quarter for the quarterly States. Normally, Federal Market Order sales are the main basis for revisions. However, data for all orders are not available in time for this revision. Estimates are again subject to revisions in February each year based on additional administrative data. In the event that additional changes are necessary, a third revision is possible in February the following year. Estimates are again reviewed after data from the five-year Census of Agriculture are available. No revisions are made after that date.

**Reliability:** Since all operations with dairy animals are not included in the sample, survey estimates are subject to sampling variability. Survey results are also subject to non-sampling errors such as omissions, duplications, and mistakes in reporting, recording, and processing the data. The effects of these errors cannot be measured directly. They are minimized through rigid quality controls in the data collection process and through a careful review of all reported data for consistency and reasonableness.

To assist users in evaluating the reliability of the estimates in this report, the "Root Mean Square Error" is shown for selected items on the next page. The "Root Mean Square Error" is a statistical measure based on past performance and is computed using the differences between first and final estimates. The "Root Mean Square Error" for milk cow inventory estimates over the past 10 April-June quarters is 0.2 percent. This means that chances are 2 out of 3 that the final April-June estimate will not be above or below the current estimate of 9.04 million head by more than 0.2 percent. Chances are 9 out of 10 that the difference will not exceed 0.4 percent.

**Reliability of April-June Milk Estimates <sup>1</sup>**

Item	Root Mean Square Error	90% Confidence Level		Difference Between First and Latest Estimates			Quarters	
				Average	Smallest	Largest	First Above Latest	First Below Latest
				<i>Million Pounds</i>	<i>Million Pounds</i>	<i>Million Pounds</i>	<i>Number</i>	<i>Number</i>
Milk Production	<i>Percent</i> 0.3	<i>Percent</i> 0.6	<i>Million Pounds</i> 274	<i>Million Pounds</i> 103	<i>Million Pounds</i> 3	<i>Million Pounds</i> 264	<i>Number</i> 5	<i>Number</i> 5
All Milk Cows	<i>Percent</i> 0.2	<i>Percent</i> 0.4	<i>1,000 Head</i> 36	<i>1,000 Head</i> 15	<i>1,000 Head</i> 0	<i>1,000 Head</i> 35	<i>Number</i> 5	<i>Number</i> 4

<sup>1</sup> Based on records for the past 10 April-June quarters.

## ACCESS TO REPORTS!!

---

For your convenience, there are several ways to obtain NASS reports, data products, and services:

### INTERNET ACCESS

All NASS reports are available free of charge on the worldwide Internet. For access, connect to the Internet and go to the NASS Home Page at: [www.usda.gov/nass/](http://www.usda.gov/nass/). Select "Today's Reports" or Publications and then Reports Calendar or Publications and then Search, by Title or Subject.

### E-MAIL SUBSCRIPTION

All NASS reports are available by subscription free of charge direct to your e-mail address. Starting with the NASS Home Page at [www.usda.gov/nass/](http://www.usda.gov/nass/), click on **Publications**, then click on the **Subscribe by E-mail** button which takes you to the page describing e-mail delivery of reports. Finally, click on **Go to the Subscription Page** and follow the instructions.

-----

### PRINTED REPORTS OR DATA PRODUCTS

**CALL OUR TOLL-FREE ORDER DESK: 800-999-6779 (U.S. and Canada)**  
**Other areas, please call 703-605-6220      FAX: 703-605-6900**  
**(Visa, MasterCard, check, or money order acceptable for payment.)**

-----

### ASSISTANCE

For **assistance** with general agricultural statistics or further information about NASS or its products or services, contact the **Agricultural Statistics Hotline** at **800-727-9540**, 7:30 a.m. to 4:00 p.m. ET, or e-mail: [nass@nass.usda.gov](mailto:nass@nass.usda.gov).

The U.S. Department of Agriculture (USDA) prohibits discrimination in all its programs and activities on the basis of race, color, national origin, age, disability, and where applicable, sex, marital status, familial status, parental status, religion, sexual orientation, genetic information, political beliefs, reprisal, or because all or part of an individual's income is derived from any public assistance program. (Not all prohibited bases apply to all programs.) Persons with disabilities who require alternative means for communication of program information (Braille, large print, audiotape, etc.) should contact USDA's TARGET Center at (202) 720-2600 (voice and TDD).

To file a complaint of discrimination, write to USDA, Director, Office of Civil Rights, 1400 Independence Avenue, S.W., Washington, D.C. 20250-9410, or call (800) 795-3272 (voice) or (202) 720-6382 (TDD). USDA is an equal opportunity provider and employer.

# **USDA Data Users' Meeting**

**October 17, 2005**

**Embassy Suites at O'Hare**

**Chicago, Illinois**

**(847) 678-4000**

The USDA's National Agricultural Statistics Service will be organizing an open forum for data users. The purpose will be to provide updates on pending changes in the various statistical and information programs and seek comments and input from data users. Other USDA agencies to be represented will include the Agricultural Marketing Service, the Economic Research Service, the Foreign Agricultural Service, and World Agricultural Outlook Board. The Foreign Trade Division from the Census Bureau will also be included in the meeting.

For registration details or additional information for the Data Users' Meeting, see the NASS homepage at [www.usda.gov/nass/](http://www.usda.gov/nass/) or contact Lynda Ford (NASS) at (202) 720-3896 or at [lynda\\_ford@nass.usda.gov](mailto:lynda_ford@nass.usda.gov).

This Data Users' Meeting precedes an Industry Outlook meeting that will be held at the same location on October 18, 2005. The Outlook meeting brings together analysts from various commodity sectors to discuss the outlook situation. For more information about the outlook meeting and to register contact Jim Robb (Livestock and Marketing Information Center) at (720) 544-2941 or at [robb@lmic.info](mailto:robb@lmic.info).