

# Milk Production

Released October 17, 2005, by the National Agricultural Statistics Service (NASS), Agricultural Statistics Board, U.S. Department of Agriculture. For information on *Milk Production* call Ann Summa at 202-720-3278, office hours 7:30 a.m. to 4:00 p.m. ET.

### Update Alert

The 2005 Jul-Sep Milk Cow data for Texas and Washington on page 6 were corrected to 320 and 242, respectively.

### September Milk Production Up 4.9 Percent

**Milk production** in the 23 major States during September totaled 13.0 billion pounds, up 4.9 percent from September 2004. August revised production, at 13.6 billion pounds, was up 4.8 percent from August 2004. The August revision represented an increase of 22 million pounds from last month's preliminary production estimate.

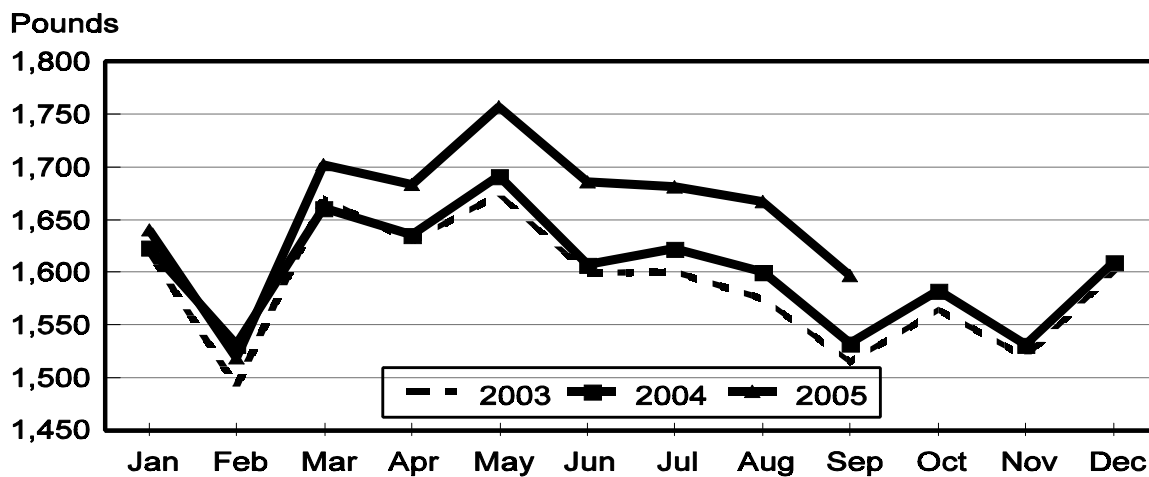
**Production per cow** in the 23 major States averaged 1,597 pounds for September, 64 pounds above September 2004.

**The number of milk cows** on farms in the 23 major States was 8.16 million head, 54,000 head more than September 2004, and 1,000 head more than August 2005.

### July-September Milk Production Up 4.2 Percent

Milk production in the U.S. during the July-September quarter totaled 44.0 billion pounds, up 4.2 percent from the July-September quarter last year. The average number of milk cows in the U.S. during the quarter was 9.05 million head, 27,000 head more than the same period last year.

## Monthly Milk per Cow 23 States



**Milk Cows and Production: By Quarter, United States, 2004-2005 <sup>1</sup>**

Quarter	Milk Cows <sup>2</sup>		Milk Per Cow <sup>3</sup>		Milk Production <sup>3</sup>		
	2004	2005	2004	2005	2004	2005	Change From 2004
	<i>1,000 Head</i>	<i>1,000 Head</i>	<i>Pounds</i>	<i>Pounds</i>	<i>Million Pounds</i>	<i>Million Pounds</i>	<i>Percent</i>
Jan-Mar	8,993	8,996	4,755	4,807	42,759	43,242	1.1
Apr-Jun	9,001	9,034	4,869	5,054	43,824	45,660	4.2
Jul-Sep	9,027	9,054	4,679	4,862	42,239	44,024	4.2
Oct-Dec	9,019		4,655		41,983		
Annual	9,010		18,957		170,809		

<sup>1</sup> May not add due to rounding.

<sup>2</sup> Includes dry cows, excludes heifers not yet fresh.

<sup>3</sup> Excludes milk sucked by calves.

**Milk Cows and Production: By Month, 23 Selected States, 2004-2005 <sup>1</sup>**

Month	Milk Cows <sup>2</sup>		Milk Per Cow <sup>3</sup>		Milk Production <sup>3</sup>		
	2004	2005	2004	2005	2004	2005	Change From 2004
	<i>1,000 Head</i>	<i>1,000 Head</i>	<i>Pounds</i>	<i>Pounds</i>	<i>Million Pounds</i>	<i>Million Pounds</i>	<i>Percent</i>
Jan	8,044	8,083	1,624	1,640	13,061	13,258	1.5
Feb	8,051	8,076	1,531	1,519	12,329	12,270	-0.5
Mar	8,059	8,095	1,661	1,702	13,387	13,779	2.9
Apr	8,063	8,109	1,636	1,683	13,194	13,647	3.4
May	8,064	8,121	1,692	1,757	13,641	14,266	4.6
Jun	8,083	8,132	1,607	1,686	12,988	13,712	5.6
Jul	8,096	8,145	1,623	1,681	13,143	13,692	4.2
Aug	8,102	8,157	1,601	1,667	12,970	13,595	4.8
Sep	8,104	8,158	1,533	1,597	12,426	13,032	4.9
Oct	8,103		1,583		12,824		
Nov	8,102		1,531		12,404		
Dec	8,097		1,610		13,037		
Annual	8,081		19,231		155,404		

<sup>1</sup> 2005 revised.

<sup>2</sup> Includes dry cows, excludes heifers not yet fresh.

<sup>3</sup> Excludes milk sucked by calves.

**Estimated Milk Cows and Production: By Month, United States, 2004-2005 <sup>1</sup>**

Month	Milk Cows <sup>2</sup>		Milk Per Cow <sup>3</sup>		Milk Production <sup>3</sup>		
	2004	2005	2004	2005	2004	2005	Change From 2004
	<i>1,000 Head</i>	<i>1,000 Head</i>	<i>Pounds</i>	<i>Pounds</i>	<i>Million Pounds</i>	<i>Million Pounds</i>	<i>Percent</i>
Jan	8,985	8,995	1,603	1,622	14,402	14,586	1.3
Feb	8,993	8,984	1,512	1,502	13,595	13,498	-0.7
Mar	9,002	9,009	1,640	1,683	14,762	15,158	2.7
Apr	8,999	9,023	1,613	1,659	14,519	14,970	3.1
May	8,991	9,034	1,670	1,732	15,012	15,650	4.2
Jun	9,014	9,044	1,586	1,663	14,293	15,040	5.2
Jul	9,028	9,047	1,596	1,654	14,405	14,960	3.9
Aug	9,029	9,057	1,574	1,637	14,215	14,830	4.3
Sep	9,025	9,058	1,509	1,571	13,619	14,234	4.5
Oct	9,023		1,559		14,070		
Nov	9,021		1,509		13,613		
Dec	9,013		1,587		14,304		
Annual	9,010		18,957		170,809		

<sup>1</sup> 2005 revised.

<sup>2</sup> Includes dry cows, excludes heifers not yet fresh.

<sup>3</sup> Excludes milk sucked by calves.

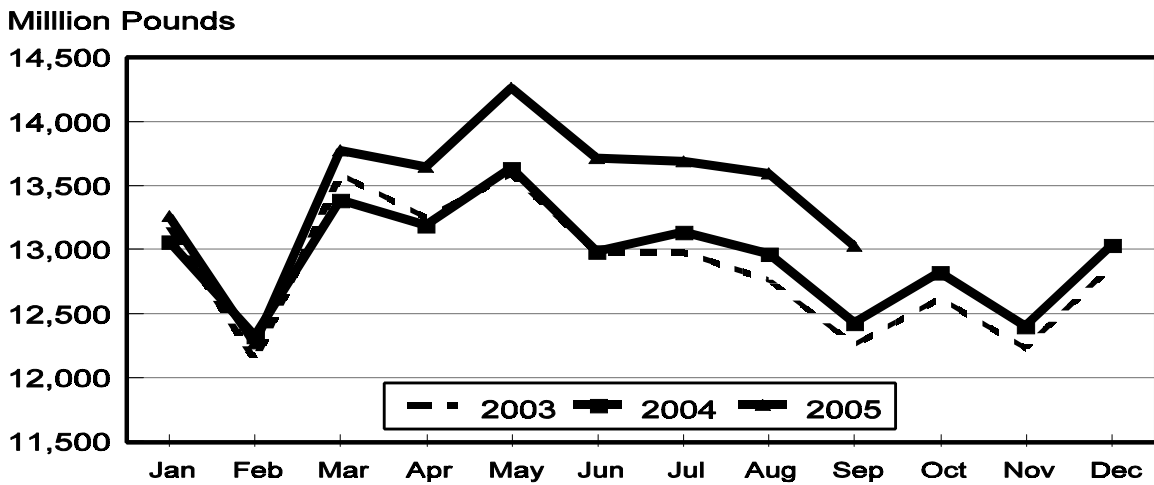
**Milk Cows and Production: By State, September 2004-2005**

State	Milk Cows <sup>1</sup>		Milk Per Cow <sup>2</sup>		Milk Production <sup>2</sup>		
	2004	2005	2004	2005	2004	2005	Change From 2004
	<i>1,000 Head</i>	<i>1,000 Head</i>	<i>Pounds</i>	<i>Pounds</i>	<i>Million Pounds</i>	<i>Million Pounds</i>	<i>Percent</i>
AZ	165	161	1,660	1,740	274	280	2.2
CA	1,737	1,765	1,715	1,745	2,979	3,080	3.4
CO	103	106	1,750	1,855	180	197	9.4
FL	137	134	1,025	1,130	140	151	7.9
ID	431	470	1,780	1,860	767	874	14.0
IL	107	104	1,440	1,450	154	151	-1.9
IN	150	156	1,540	1,615	231	252	9.1
IA	191	187	1,580	1,610	302	301	-0.3
KS	115	112	1,550	1,650	178	185	3.9
KY	109	105	990	1,000	108	105	-2.8
MI	303	312	1,670	1,735	506	541	6.9
MN	465	450	1,365	1,435	635	646	1.7
MO	121	115	1,150	1,125	139	129	-7.2
NM	325	333	1,670	1,710	543	569	4.8
NY	654	649	1,420	1,515	929	983	5.8
OH	266	270	1,370	1,410	364	381	4.7
OR	120	121	1,565	1,550	188	188	
PA	562	561	1,415	1,500	795	842	5.9
TX	320	320	1,405	1,515	450	485	7.8
VT	145	142	1,430	1,480	207	210	1.4
VA	104	105	1,290	1,300	134	137	2.2
WA	235	243	1,870	1,915	439	465	5.9
WI	1,239	1,237	1,440	1,520	1,784	1,880	5.4
23-State Total	8,104	8,158	1,533	1,597	12,426	13,032	4.9

<sup>1</sup> Includes dry cows, excludes heifers not yet fresh.

<sup>2</sup> Excludes milk sucked by calves.

### Monthly Milk Production 23 States



**Milk Cows and Production: By State, August 2004-2005 <sup>1</sup>**

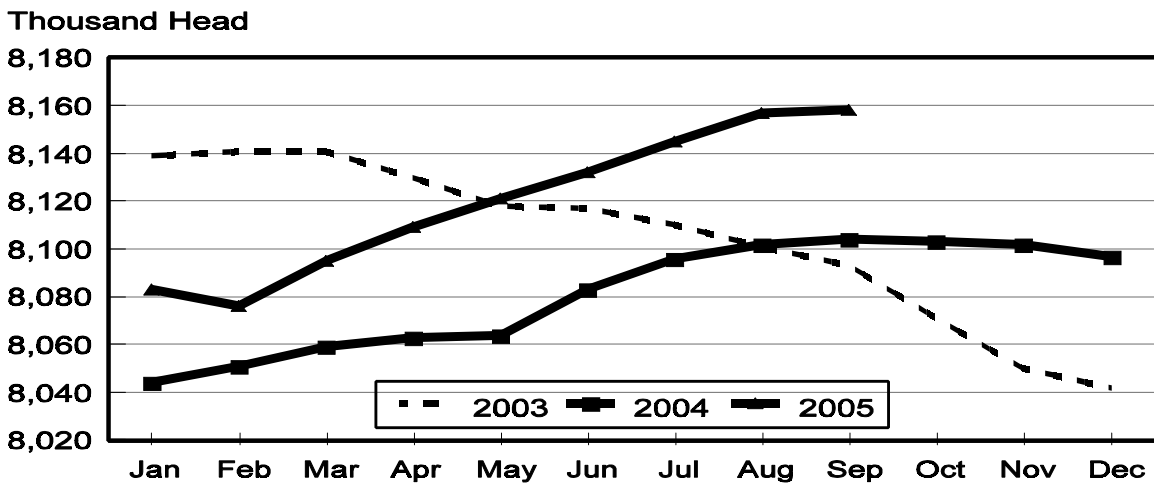
State	Milk Cows <sup>2</sup>		Milk per Cow <sup>3</sup>		Milk Production <sup>3</sup>		
	2004	2005	2004	2005	2004	2005	Change From 2004
	<i>1,000 Head</i>	<i>1,000 Head</i>	<i>Pounds</i>	<i>Pounds</i>	<i>Million Pounds</i>	<i>Million Pounds</i>	<i>Percent</i>
AZ	163	161	1,710	1,780	279	287	2.9
CA	1,733	1,763	1,775	1,790	3,076	3,156	2.6
CO	103	105	1,835	1,970	189	207	9.5
FL	138	135	1,225	1,240	169	167	-1.2
ID	431	468	1,850	1,940	797	908	13.9
IL	107	104	1,490	1,515	159	158	-0.6
IN	149	157	1,620	1,660	241	261	8.3
IA	192	186	1,640	1,680	315	312	-1.0
KS	115	112	1,600	1,690	184	189	2.7
KY	110	106	1,045	1,030	115	109	-5.2
MI	303	313	1,755	1,815	532	568	6.8
MN	465	455	1,440	1,505	670	685	2.2
MO	121	115	1,210	1,170	146	135	-7.5
NM	327	331	1,740	1,825	569	604	6.2
NY	654	647	1,500	1,600	981	1,035	5.5
OH	266	270	1,430	1,460	380	394	3.7
OR	120	121	1,615	1,630	194	197	1.5
PA	560	562	1,475	1,575	826	885	7.1
TX	320	320	1,465	1,625	469	520	10.9
VT	145	143	1,495	1,550	217	222	2.3
VA	104	105	1,335	1,360	139	143	2.9
WA	236	242	1,910	1,990	451	482	6.9
WI	1,240	1,236	1,510	1,595	1,872	1,971	5.3
23-State Total	8,102	8,157	1,601	1,667	12,970	13,595	4.8

<sup>1</sup> 2005 revised.

<sup>2</sup> Includes dry cows, excludes heifers not yet fresh.

<sup>3</sup> Excludes milk sucked by calves.

**Monthly Milk Cows  
23 States**



**Milk Cows and Production: By State and United States,  
Revised April-June, 2004-2005**

State	Apr-Jun Milk Cows <sup>1</sup>		Apr-Jun Milk Production <sup>2</sup>		Change From 2004
	2004	2005	2004	2005	
	<i>1,000 Head</i>	<i>1,000 Head</i>	<i>Million Pounds</i>	<i>Million Pounds</i>	<i>Percent</i>
AL	17	16	66	63	-4.5
AK	1.2	1.2	3.8	3.8	
AZ	155	163	952	993	4.3
AR	24	23	85	80	-5.9
CA	1,720	1,754	9,246	9,656	4.4
CO	102	104	549	595	8.4
CT	20	20	100	101	1.0
DE	7.5	7.5	33.0	35.0	6.1
FL	139	138	615	632	2.8
GA	84	82	382	382	
HI	6.2	5.4	22.2	19.0	-14.4
ID	418	446	2,264	2,536	12.0
IL	108	104	512	508	-0.8
IN	149	155	777	809	4.1
IA	195	187	991	986	-0.5
KS	114	112	572	592	3.5
KY	110	107	375	369	-1.6
LA	38	36	131	124	-5.3
ME	34	33	157	155	-1.3
MD	75	72	300	300	
MA	17	17	76	77	1.3
MI	301	311	1,595	1,719	7.8
MN	462	455	2,084	2,135	2.4
MS	27	26	104	109	4.8
MO	124	119	496	476	-4.0
MT	18	19	88	95	8.0
NE	60	60	266	279	4.9
NV	25	25	125	137	9.6
NH	16	16	78	80	2.6
NJ	12	12	52	50	-3.8
NM	327	324	1,734	1,780	2.7
NY	656	646	2,999	3,116	3.9
NC	57	54	259	251	-3.1
ND	34	33	136	135	-0.7
OH	263	270	1,179	1,228	4.2
OK	79	75	329	321	-2.4
OR	120	121	585	591	1.0
PA	558	564	2,597	2,745	5.7
RI	1.2	1.0	5.2	4.9	-5.8
SC	17	18	76	79	3.9
SD	81	81	343	371	8.2
TN	76	71	310	300	-3.2
TX	318	320	1,587	1,704	7.4
UT	87	89	409	417	2.0
VT	145	144	656	688	4.9
VA	105	105	447	466	4.3
WA	239	240	1,386	1,440	3.9
WV	13	13	49	49	
WI	1,242	1,234	5,625	5,861	4.2
WY	4.2	4.5	16.0	17.1	6.9
US <sup>3</sup>	9,001	9,034	43,824	45,660	4.2

<sup>1</sup> Includes dry cows, excludes heifers not yet fresh.

<sup>2</sup> Excludes milk sucked by calves.

<sup>3</sup> May not add due to rounding.

**Milk Cows and Production: By State and United States,  
Preliminary July-September, 2004-2005**

State	Jul-Sep Milk Cows <sup>1</sup>		Jul-Sep Milk Production <sup>2</sup>		Change From 2004
	2004	2005	2004	2005	
	<i>1,000 Head</i>	<i>1,000 Head</i>	<i>Million Pounds</i>	<i>Million Pounds</i>	<i>Percent</i>
AL	17	16	52	47	-9.6
AK	1.2	1.1	3.8	3.4	-10.5
AZ	162	161	839	871	3.8
AR	24	22	74	69	-6.8
CA	1,733	1,763	9,133	9,360	2.5
CO	103	105	550	610	10.9
CT	20	20	95	92	-3.2
DE	7.0	7.5	29.0	32.3	11.4
FL	138	135	495	496	0.2
GA	84	81	319	309	-3.1
HI	6.0	5.3	19.0	17.4	-8.4
ID	430	466	2,358	2,684	13.8
IL	107	104	476	473	-0.6
IN	150	156	718	778	8.4
IA	192	187	937	931	-0.6
KS	115	112	549	564	2.7
KY	110	106	341	327	-4.1
LA	37	34	101	87	-13.9
ME	34	33	156	151	-3.2
MD	73	72	277	281	1.4
MA	17	16	73	72	-1.4
MI	303	313	1,580	1,685	6.6
MN	465	453	1,984	2,018	1.7
MS	27	25	80	81	1.3
MO	121	116	436	407	-6.7
MT	18	19	88	96	9.1
NE	61	60	254	264	3.9
NV	25	25	129	137	6.2
NH	16	16	74	74	
NJ	12	12	49	47	-4.1
NM	327	331	1,693	1,778	5.0
NY	655	648	2,907	3,053	5.0
NC	56	54	241	233	-3.3
ND	34	32	134	132	-1.5
OH	266	270	1,128	1,175	4.2
OK	77	75	307	311	1.3
OR	120	121	581	583	0.3
PA	560	561	2,465	2,630	6.7
RI	1.1	1.1	4.7	4.7	
SC	17	17	63	63	
SD	80	81	333	358	7.5
TN	75	69	265	250	-5.7
TX	320	320	1,412	1,552	9.9
UT	88	88	416	427	2.6
VT	145	143	645	656	1.7
VA	104	105	415	426	2.7
WA	236	242	1,356	1,433	5.7
WV	13	13	47	48	2.1
WI	1,240	1,236	5,541	5,829	5.2
WY	4.3	5.0	16.3	18.5	13.5
US <sup>3</sup>	9,027	9,054	42,239	44,024	4.2

<sup>1</sup> Includes dry cows, excludes heifers not yet fresh.

<sup>2</sup> Excludes milk sucked by calves.

<sup>3</sup> May not add due to rounding.

## Reliability Statement

**Survey Procedures:** Primary data used to determine these estimates were obtained from a sample of producers. Individual States maintain a list of all known milk producers and information on the size of their herd. States use all known sources of producers to ensure that their lists are as complete as possible. Generally, all large producers and a sample of small producers are included in the survey. Questionnaires are mailed to producers near the end of the month to obtain data for the first day of the month. Additional reports are obtained by telephone, as needed, to supplement the mail response. Where feasible, States utilize state and federal administrative data, rather than conduct a monthly or quarterly survey, to estimate milk production. This eliminates duplication of data gathering by different government agencies. Indications of milk cow inventory are also obtained in the January and July Cattle Surveys.

**Estimation Procedures:** State offices prepare these estimates by using a combination of survey indications, historic trends, and any available administrative data. Individual State estimates are reviewed by the Agricultural Statistics Board for reasonableness.

**Revision Policy:** Milk production, rate per cow, and number of cows are subject to revision the following month for monthly States or the following quarter for the quarterly States. Normally, Federal Market Order sales are the main basis for revisions. However, data for all orders are not available in time for this revision. Estimates are again subject to revisions in February each year based on additional administrative data. In the event that additional changes are necessary, a third revision is possible in February the following year. Estimates are again reviewed after data from the five-year Census of Agriculture are available. No revisions are made after that date.

**Reliability:** Since all operations with dairy animals are not included in the sample, survey estimates are subject to sampling variability. Survey results are also subject to non-sampling errors such as omissions, duplications, and mistakes in reporting, recording, and processing the data. The effects of these errors cannot be measured directly. They are minimized through rigid quality controls in the data collection process and through a careful review of all reported data for consistency and reasonableness.

To assist users in evaluating the reliability of the estimates in this report, the "Root Mean Square Error" is shown for selected items on the next page. The "Root Mean Square Error" is a statistical measure based on past performance and is computed using the differences between first and final estimates. The "Root Mean Square Error" for milk cow inventory estimates over the past 10 July-September quarters is 0.6 percent. This means that chances are 2 out of 3 that the final July-September estimate will not be above or below the current estimate of 9.05 million head by more than 0.6 percent. Chances are 9 out of 10 that the difference will not exceed 1.0 percent.

**Reliability of July-September Milk Estimates <sup>1</sup>**

Item	Root Mean Square Error	90% Confidence Level		Difference Between First and Latest Estimates			Quarters	
				Average	Smallest	Largest	First Above Latest	First Below Latest
				<i>Million Pounds</i>	<i>Million Pounds</i>	<i>Million Pounds</i>	<i>Number</i>	<i>Number</i>
Milk Production	<i>Percent</i> 0.6	<i>Percent</i> 1.0	<i>Million Pounds</i> 44,024	<i>Million Pounds</i> 197	<i>Million Pounds</i> 65	<i>Million Pounds</i> 362	<i>Number</i> 8	<i>Number</i> 2
All Milk Cows	<i>Percent</i> 0.3	<i>Percent</i> 0.6	<i>1,000 Head</i> 5,432	<i>1,000 Head</i> 21	<i>1,000 Head</i> 2	<i>1,000 Head</i> 61	<i>Number</i> 7	<i>Number</i> 3

<sup>1</sup> Based on records for the past 10 July-September quarters.



## ACCESS TO REPORTS!!

---

For your convenience, there are several ways to obtain NASS reports, data products, and services:

### INTERNET ACCESS

All NASS reports are available free of charge on the worldwide Internet. For access, connect to the Internet and go to the NASS Home Page at: [www.usda.gov/nass/](http://www.usda.gov/nass/). Select "Today's Reports" or Publications and then Reports Calendar or Publications and then Search, by Title or Subject.

### E-MAIL SUBSCRIPTION

All NASS reports are available by subscription free of charge direct to your e-mail address. Starting with the NASS Home Page at [www.usda.gov/nass/](http://www.usda.gov/nass/), click on **Publications**, then click on the **Subscribe by E-mail** button which takes you to the page describing e-mail delivery of reports. Finally, click on **Go to the Subscription Page** and follow the instructions.

-----

### PRINTED REPORTS OR DATA PRODUCTS

**CALL OUR TOLL-FREE ORDER DESK: 800-999-6779 (U.S. and Canada)**  
**Other areas, please call 703-605-6220      FAX: 703-605-6900**  
**(Visa, MasterCard, check, or money order acceptable for payment.)**

-----

### ASSISTANCE

For **assistance** with general agricultural statistics or further information about NASS or its products or services, contact the **Agricultural Statistics Hotline** at **800-727-9540**, 7:30 a.m. to 4:00 p.m. ET, or e-mail: [nass@nass.usda.gov](mailto:nass@nass.usda.gov).

The U.S. Department of Agriculture (USDA) prohibits discrimination in all its programs and activities on the basis of race, color, national origin, age, disability, and where applicable, sex, marital status, familial status, parental status, religion, sexual orientation, genetic information, political beliefs, reprisal, or because all or part of an individual's income is derived from any public assistance program. (Not all prohibited bases apply to all programs.) Persons with disabilities who require alternative means for communication of program information (Braille, large print, audiotape, etc.) should contact USDA's TARGET Center at (202) 720-2600 (voice and TDD).

To file a complaint of discrimination, write to USDA, Director, Office of Civil Rights, 1400 Independence Avenue, S.W., Washington, D.C. 20250-9410, or call (800) 795-3272 (voice) or (202) 720-6382 (TDD). USDA is an equal opportunity provider and employer.