



# NASS

FACT FINDERS FOR AGRICULTURE  
UNITED STATES DEPARTMENT OF AGRICULTURE

Washington, D.C.

# Milk Production

Released November 16, 2005, by the National Agricultural Statistics Service (NASS), Agricultural Statistics Board, U.S. Department of Agriculture. For information on *Milk Production* call Ann Summa at 202-720-3278, office hours 7:30 a.m. to 4:00 p.m. ET.

## Special Note

Estimates for 2004 November, December, and Annual Milk Production have been corrected to the originally published final estimates in the February 17, 2005 *Milk Production* publication. Estimates for these months were printed incorrectly in the August, September and October 2005 *Milk Production* publications.

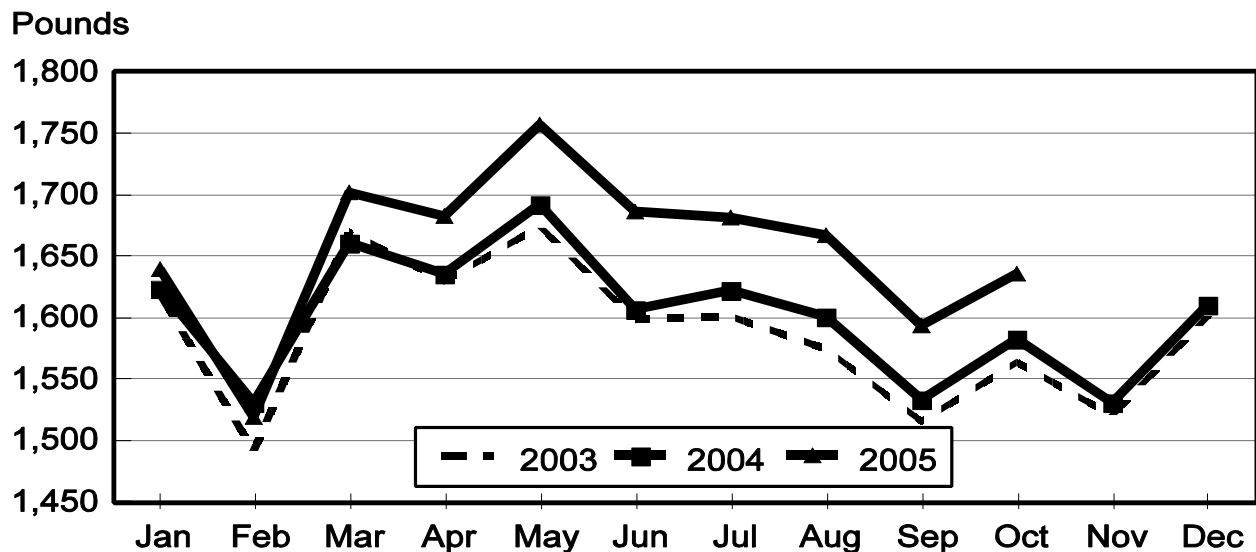
## October Milk Production Up 4.1 Percent

**Milk production** in the 23 major States during October totaled 13.4 billion pounds, up 4.1 percent from October 2004. September revised production, at 13.0 billion pounds, was up 4.7 percent from September 2004. The September revision represented a decrease of 27 million pounds or 0.2 percent from last month's preliminary production estimate.

**Production per cow** in the 23 major States averaged 1,636 pounds for October, 53 pounds above October 2004.

**The number of milk cows** on farms in the 23 major States was 8.16 million head, 58,000 head more than October 2004, and 4,000 head more than September 2005.

## Monthly Milk per Cow 23 States



**Milk Cows and Production: By Quarter, United States, 2004-2005 <sup>1</sup>**

| Quarter | Milk Cows <sup>2</sup> |                   | Milk Per Cow <sup>3</sup> |               | Milk Production <sup>3</sup> |                       |                  |
|---------|------------------------|-------------------|---------------------------|---------------|------------------------------|-----------------------|------------------|
|         | 2004                   | 2005              | 2004                      | 2005          | 2004                         | 2005                  | Change From 2004 |
|         | <i>1,000 Head</i>      | <i>1,000 Head</i> | <i>Pounds</i>             | <i>Pounds</i> | <i>Million Pounds</i>        | <i>Million Pounds</i> | <i>Percent</i>   |
| Jan-Mar | 8,993                  | 8,996             | 4,755                     | 4,807         | 42,759                       | 43,242                | 1.1              |
| Apr-Jun | 9,001                  | 9,034             | 4,869                     | 5,054         | 43,824                       | 45,660                | 4.2              |
| Jul-Sep | 9,027                  | 9,054             | 4,679                     | 4,859         | 42,239                       | 43,997                | 4.2              |
| Oct-Dec | 9,019                  |                   | 4,655                     |               | 41,983                       |                       |                  |
| Annual  | 9,010                  |                   | 18,957                    |               | 170,805                      |                       |                  |

<sup>1</sup> May not add due to rounding.

<sup>2</sup> Includes dry cows, excludes heifers not yet fresh.

<sup>3</sup> Excludes milk sucked by calves.

**Milk Cows and Production: By Month, 23 Selected States, 2004-2005 <sup>1</sup>**

| Month  | Milk Cows <sup>2</sup> |                   | Milk Per Cow <sup>3</sup> |               | Milk Production <sup>3</sup> |                       |                  |
|--------|------------------------|-------------------|---------------------------|---------------|------------------------------|-----------------------|------------------|
|        | 2004                   | 2005              | 2004                      | 2005          | 2004                         | 2005                  | Change From 2004 |
|        | <i>1,000 Head</i>      | <i>1,000 Head</i> | <i>Pounds</i>             | <i>Pounds</i> | <i>Million Pounds</i>        | <i>Million Pounds</i> | <i>Percent</i>   |
| Jan    | 8,044                  | 8,083             | 1,624                     | 1,640         | 13,061                       | 13,258                | 1.5              |
| Feb    | 8,051                  | 8,076             | 1,531                     | 1,519         | 12,329                       | 12,270                | -0.5             |
| Mar    | 8,059                  | 8,095             | 1,661                     | 1,702         | 13,387                       | 13,779                | 2.9              |
| Apr    | 8,063                  | 8,109             | 1,636                     | 1,683         | 13,194                       | 13,647                | 3.4              |
| May    | 8,064                  | 8,121             | 1,692                     | 1,757         | 13,641                       | 14,266                | 4.6              |
| Jun    | 8,083                  | 8,132             | 1,607                     | 1,686         | 12,988                       | 13,712                | 5.6              |
| Jul    | 8,096                  | 8,145             | 1,623                     | 1,681         | 13,143                       | 13,692                | 4.2              |
| Aug    | 8,102                  | 8,157             | 1,601                     | 1,667         | 12,970                       | 13,595                | 4.8              |
| Sep    | 8,104                  | 8,157             | 1,533                     | 1,594         | 12,426                       | 13,005                | 4.7              |
| Oct    | 8,103                  | 8,161             | 1,583                     | 1,636         | 12,824                       | 13,353                | 4.1              |
| Nov    | 8,102                  |                   | 1,531                     |               | 12,404                       |                       |                  |
| Dec    | 8,097                  |                   | 1,610                     |               | 13,037                       |                       |                  |
| Annual | 8,081                  |                   | 19,232                    |               | 155,404                      |                       |                  |

<sup>1</sup> 2005 revised.

<sup>2</sup> Includes dry cows, excludes heifers not yet fresh.

<sup>3</sup> Excludes milk sucked by calves.

**Estimated Milk Cows and Production: By Month, United States, 2004-2005 <sup>1</sup>**

| Month  | Milk Cows <sup>2</sup> |                   | Milk Per Cow <sup>3</sup> |               | Milk Production <sup>3</sup> |                       |                  |
|--------|------------------------|-------------------|---------------------------|---------------|------------------------------|-----------------------|------------------|
|        | 2004                   | 2005              | 2004                      | 2005          | 2004                         | 2005                  | Change From 2004 |
|        | <i>1,000 Head</i>      | <i>1,000 Head</i> | <i>Pounds</i>             | <i>Pounds</i> | <i>Million Pounds</i>        | <i>Million Pounds</i> | <i>Percent</i>   |
| Jan    | 8,985                  | 8,995             | 1,603                     | 1,622         | 14,402                       | 14,586                | 1.3              |
| Feb    | 8,993                  | 8,984             | 1,512                     | 1,502         | 13,595                       | 13,498                | -0.7             |
| Mar    | 9,002                  | 9,009             | 1,640                     | 1,683         | 14,762                       | 15,158                | 2.7              |
| Apr    | 8,999                  | 9,023             | 1,613                     | 1,659         | 14,519                       | 14,970                | 3.1              |
| May    | 8,991                  | 9,034             | 1,670                     | 1,732         | 15,012                       | 15,650                | 4.2              |
| Jun    | 9,014                  | 9,044             | 1,586                     | 1,663         | 14,293                       | 15,040                | 5.2              |
| Jul    | 9,028                  | 9,047             | 1,596                     | 1,654         | 14,405                       | 14,950                | 3.8              |
| Aug    | 9,029                  | 9,057             | 1,574                     | 1,637         | 14,215                       | 14,844                | 4.4              |
| Sep    | 9,025                  | 9,057             | 1,509                     | 1,571         | 13,619                       | 14,203                | 4.3              |
| Oct    | 9,023                  | 9,059             | 1,559                     | 1,617         | 14,070                       | 14,651                | 4.1              |
| Nov    | 9,021                  |                   | 1,509                     |               | 13,610                       |                       |                  |
| Dec    | 9,013                  |                   | 1,587                     |               | 14,303                       |                       |                  |
| Annual | 9,010                  |                   | 18,957                    |               | 170,805                      |                       |                  |

<sup>1</sup> 2005 revised.

<sup>2</sup> Includes dry cows, excludes heifers not yet fresh.

<sup>3</sup> Excludes milk sucked by calves.

**Milk Cows and Production: By State, October 2004-2005**

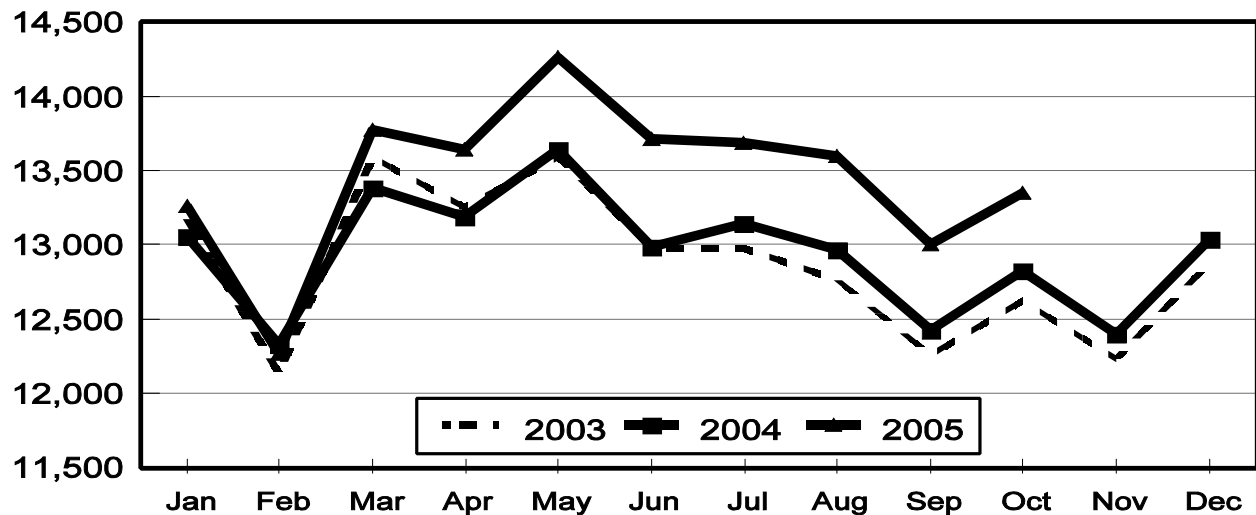
| State          | Milk Cows <sup>1</sup> |                   | Milk Per Cow <sup>2</sup> |               | Milk Production <sup>2</sup> |                       |                  |
|----------------|------------------------|-------------------|---------------------------|---------------|------------------------------|-----------------------|------------------|
|                | 2004                   | 2005              | 2004                      | 2005          | 2004                         | 2005                  | Change From 2004 |
|                | <i>1,000 Head</i>      | <i>1,000 Head</i> | <i>Pounds</i>             | <i>Pounds</i> | <i>Million Pounds</i>        | <i>Million Pounds</i> | <i>Percent</i>   |
| AZ             | 167                    | 161               | 1,785                     | 1,840         | 298                          | 296                   | -0.7             |
| CA             | 1,740                  | 1,770             | 1,770                     | 1,780         | 3,080                        | 3,151                 | 2.3              |
| CO             | 103                    | 106               | 1,785                     | 1,870         | 184                          | 198                   | 7.6              |
| FL             | 137                    | 135               | 1,165                     | 1,175         | 160                          | 159                   | -0.6             |
| ID             | 434                    | 470               | 1,800                     | 1,880         | 781                          | 884                   | 13.2             |
| IL             | 106                    | 104               | 1,480                     | 1,510         | 157                          | 157                   |                  |
| IN             | 152                    | 155               | 1,585                     | 1,685         | 241                          | 261                   | 8.3              |
| IA             | 191                    | 187               | 1,640                     | 1,640         | 313                          | 307                   | -1.9             |
| KS             | 114                    | 112               | 1,590                     | 1,715         | 181                          | 192                   | 6.1              |
| KY             | 109                    | 103               | 1,035                     | 1,030         | 113                          | 106                   | -6.2             |
| MI             | 304                    | 312               | 1,730                     | 1,790         | 526                          | 558                   | 6.1              |
| MN             | 460                    | 450               | 1,425                     | 1,470         | 656                          | 662                   | 0.9              |
| MO             | 120                    | 114               | 1,230                     | 1,200         | 148                          | 137                   | -7.4             |
| NM             | 323                    | 335               | 1,690                     | 1,760         | 546                          | 590                   | 8.1              |
| NY             | 653                    | 650               | 1,470                     | 1,550         | 960                          | 1,008                 | 5.0              |
| OH             | 266                    | 270               | 1,410                     | 1,440         | 375                          | 389                   | 3.7              |
| OR             | 120                    | 121               | 1,575                     | 1,590         | 189                          | 192                   | 1.6              |
| PA             | 563                    | 558               | 1,465                     | 1,550         | 825                          | 865                   | 4.8              |
| TX             | 320                    | 320               | 1,470                     | 1,605         | 470                          | 514                   | 9.4              |
| VT             | 145                    | 142               | 1,455                     | 1,505         | 211                          | 214                   | 1.4              |
| VA             | 104                    | 105               | 1,355                     | 1,370         | 141                          | 144                   | 2.1              |
| WA             | 234                    | 244               | 1,895                     | 1,925         | 443                          | 470                   | 6.1              |
| WI             | 1,238                  | 1,237             | 1,475                     | 1,535         | 1,826                        | 1,899                 | 4.0              |
| 23-State Total | 8,103                  | 8,161             | 1,583                     | 1,636         | 12,824                       | 13,353                | 4.1              |

<sup>1</sup> Includes dry cows, excludes heifers not yet fresh.

<sup>2</sup> Excludes milk sucked by calves.

## Monthly Milk Production 23 States

Million Pounds



**Milk Cows and Production: By State, September 2004-2005 <sup>1</sup>**

| State          | Milk Cows <sup>2</sup> |                   | Milk per Cow <sup>3</sup> |               | Milk Production <sup>3</sup> |                       |                  |
|----------------|------------------------|-------------------|---------------------------|---------------|------------------------------|-----------------------|------------------|
|                | 2004                   | 2005              | 2004                      | 2005          | 2004                         | 2005                  | Change From 2004 |
|                | <i>1,000 Head</i>      | <i>1,000 Head</i> | <i>Pounds</i>             | <i>Pounds</i> | <i>Million Pounds</i>        | <i>Million Pounds</i> | <i>Percent</i>   |
| AZ             | 165                    | 161               | 1,660                     | 1,740         | 274                          | 280                   | 2.2              |
| CA             | 1,737                  | 1,765             | 1,715                     | 1,745         | 2,979                        | 3,080                 | 3.4              |
| CO             | 103                    | 106               | 1,750                     | 1,870         | 180                          | 198                   | 10.0             |
| FL             | 137                    | 134               | 1,025                     | 1,100         | 140                          | 147                   | 5.0              |
| ID             | 431                    | 469               | 1,780                     | 1,850         | 767                          | 868                   | 13.2             |
| IL             | 107                    | 104               | 1,440                     | 1,450         | 154                          | 151                   | -1.9             |
| IN             | 150                    | 156               | 1,540                     | 1,615         | 231                          | 252                   | 9.1              |
| IA             | 191                    | 187               | 1,580                     | 1,590         | 302                          | 297                   | -1.7             |
| KS             | 115                    | 112               | 1,550                     | 1,650         | 178                          | 185                   | 3.9              |
| KY             | 109                    | 105               | 990                       | 980           | 108                          | 103                   | -4.6             |
| MI             | 303                    | 312               | 1,670                     | 1,735         | 506                          | 541                   | 6.9              |
| MN             | 465                    | 450               | 1,365                     | 1,435         | 635                          | 646                   | 1.7              |
| MO             | 121                    | 115               | 1,150                     | 1,100         | 139                          | 127                   | -8.6             |
| NM             | 325                    | 333               | 1,670                     | 1,710         | 543                          | 569                   | 4.8              |
| NY             | 654                    | 649               | 1,420                     | 1,515         | 929                          | 983                   | 5.8              |
| OH             | 266                    | 270               | 1,370                     | 1,410         | 364                          | 381                   | 4.7              |
| OR             | 120                    | 121               | 1,565                     | 1,550         | 188                          | 188                   |                  |
| PA             | 562                    | 561               | 1,415                     | 1,500         | 795                          | 842                   | 5.9              |
| TX             | 320                    | 320               | 1,405                     | 1,515         | 450                          | 485                   | 7.8              |
| VT             | 145                    | 142               | 1,430                     | 1,480         | 207                          | 210                   | 1.4              |
| VA             | 104                    | 105               | 1,290                     | 1,325         | 134                          | 139                   | 3.7              |
| WA             | 235                    | 243               | 1,870                     | 1,915         | 439                          | 465                   | 5.9              |
| WI             | 1,239                  | 1,237             | 1,440                     | 1,510         | 1,784                        | 1,868                 | 4.7              |
| 23-State Total | 8,104                  | 8,157             | 1,533                     | 1,594         | 12,426                       | 13,005                | 4.7              |

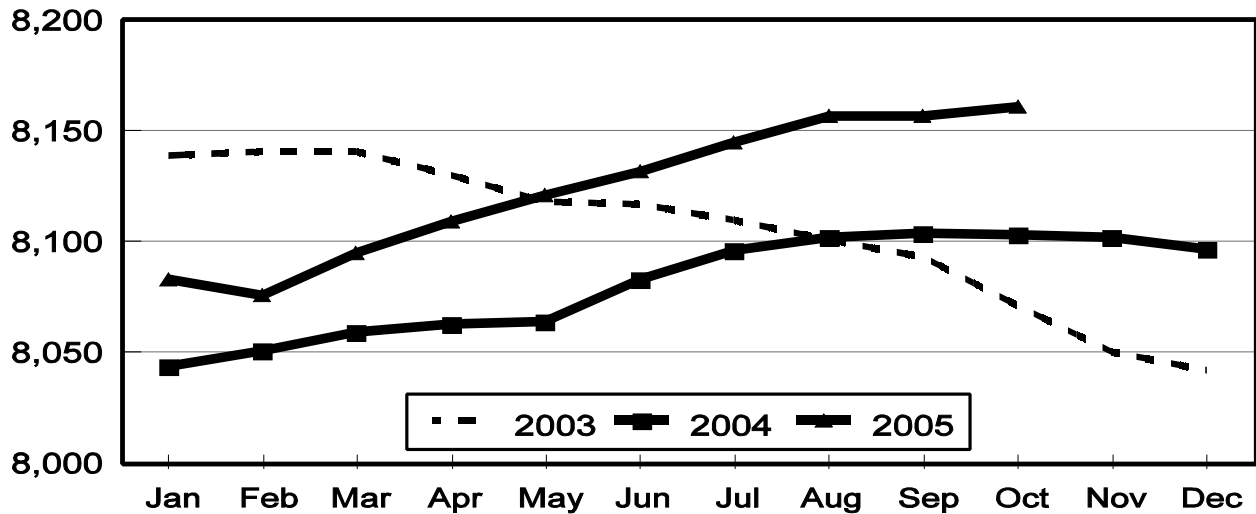
<sup>1</sup> 2005 revised.

<sup>2</sup> Includes dry cows, excludes heifers not yet fresh.

<sup>3</sup> Excludes milk sucked by calves.

## Monthly Milk Cows 23 States

Thousand Head



## Reliability Statement

**Survey Procedures:** Primary data used to determine these estimates were obtained from a sample of producers. Individual States maintain a list of all known milk producers and information on the size of their herd. States use all known sources of producers to ensure that their lists are as complete as possible. Generally, all large producers and a sample of small producers are included in the survey. Questionnaires are mailed to producers near the end of the month to obtain data for the first day of the month. Additional reports are obtained by telephone, as needed, to supplement the mail response. Where feasible, States utilize state and federal administrative data, rather than conduct a monthly or quarterly survey, to estimate milk production. This eliminates duplication of data gathering by different government agencies. Indications of milk cow inventory are also obtained in the January and July Cattle Surveys.

**Estimation Procedures:** State offices prepare these estimates by using a combination of survey indications, historic trends, and any available administrative data. Individual State estimates are reviewed by the Agricultural Statistics Board for reasonableness.

**Revision Policy:** Milk production, rate per cow, and number of cows are subject to revision the following month for monthly States or the following quarter for the quarterly States. Normally, Federal Market Order sales are the main basis for revisions. However, data for all orders are not available in time for this revision. Estimates are again subject to revisions in February each year based on additional administrative data. In the event that additional changes are necessary, a third revision is possible in February the following year. Estimates are again reviewed after data from the five-year Census of Agriculture are available. No revisions are made after that date.

**Reliability:** Since all operations with dairy animals are not included in the sample, survey estimates are subject to sampling variability. Survey results are also subject to non-sampling errors such as omissions, duplications, and mistakes in reporting, recording, and processing the data. The effects of these errors cannot be measured directly. They are minimized through rigid quality controls in the data collection process and through a careful review of all reported data for consistency and reasonableness.

To assist users in evaluating the reliability of the estimates in this report, the "Root Mean Square Error" is shown for selected items on the next page. The "Root Mean Square Error" is a statistical measure based on past performance and is computed using the differences between first and final estimates. The "Root Mean Square Error" for milk cow inventory estimates over the past 10 July-September quarters is 0.6 percent. This means that chances are 2 out of 3 that the final July-September estimate will not be above or below the current estimate of 9.05 million head by more than 0.6 percent. Chances are 9 out of 10 that the difference will not exceed 1.0 percent.

**Reliability of July-September Milk Estimates <sup>1</sup>**

| Item            | Root Mean Square Error | 90% Confidence Level  |                                 | Difference Between First and Latest Estimates |                             |                              | Quarters           |                    |
|-----------------|------------------------|-----------------------|---------------------------------|---|-----------------------------|------------------------------|--------------------|--------------------|
|                 |                        |                       |                                 | Average                                       | Smallest                    | Largest                      | First Above Latest | First Below Latest |
|                 |                        |                       |                                 | <i>Million Pounds</i>                         | <i>Million Pounds</i>       | <i>Million Pounds</i>        | <i>Number</i>      | <i>Number</i>      |
| Milk Production | <i>Percent</i><br>0.6  | <i>Percent</i><br>1.0 | <i>Million Pounds</i><br>43,997 | <i>Million Pounds</i><br>197                  | <i>Million Pounds</i><br>65 | <i>Million Pounds</i><br>362 | <i>Number</i><br>8 | <i>Number</i><br>2 |
| All Milk Cows   | <i>Percent</i><br>0.3  | <i>Percent</i><br>0.6 | <i>1,000 Head</i><br>5,432      | <i>1,000 Head</i><br>21                       | <i>1,000 Head</i><br>2      | <i>1,000 Head</i><br>61      | <i>Number</i><br>7 | <i>Number</i><br>3 |

<sup>1</sup> Based on records for the past 10 July-September quarters.

## ACCESS TO REPORTS!!

---

For your convenience, there are several ways to obtain NASS reports, data products, and services:

### INTERNET ACCESS

All NASS reports are available free of charge on the worldwide Internet. For access, connect to the Internet and go to the NASS Home Page at: [www.usda.gov/nass/](http://www.usda.gov/nass/). Select "Today's Reports" or Publications and then Reports Calendar or Publications and then Search, by Title or Subject.

### E-MAIL SUBSCRIPTION

All NASS reports are available by subscription free of charge direct to your e-mail address. Starting with the NASS Home Page at [www.usda.gov/nass/](http://www.usda.gov/nass/), click on **Publications**, then click on the **Subscribe by E-mail** button which takes you to the page describing e-mail delivery of reports. Finally, click on **Go to the Subscription Page** and follow the instructions.

-----

### PRINTED REPORTS OR DATA PRODUCTS

**CALL OUR TOLL-FREE ORDER DESK: 800-999-6779 (U.S. and Canada)**  
**Other areas, please call 703-605-6220      FAX: 703-605-6900**  
**(Visa, MasterCard, check, or money order acceptable for payment.)**

-----

### ASSISTANCE

For **assistance** with general agricultural statistics or further information about NASS or its products or services, contact the **Agricultural Statistics Hotline** at **800-727-9540**, 7:30 a.m. to 4:00 p.m. ET, or e-mail: [nass@nass.usda.gov](mailto:nass@nass.usda.gov).

The U.S. Department of Agriculture (USDA) prohibits discrimination in all its programs and activities on the basis of race, color, national origin, age, disability, and where applicable, sex, marital status, familial status, parental status, religion, sexual orientation, genetic information, political beliefs, reprisal, or because all or part of an individual's income is derived from any public assistance program. (Not all prohibited bases apply to all programs.) Persons with disabilities who require alternative means for communication of program information (Braille, large print, audiotape, etc.) should contact USDA's TARGET Center at (202) 720-2600 (voice and TDD).

To file a complaint of discrimination, write to USDA, Director, Office of Civil Rights, 1400 Independence Avenue, S.W., Washington, D.C. 20250-9410, or call (800) 795-3272 (voice) or (202) 720-6382 (TDD). USDA is an equal opportunity provider and employer.