



NASS

FACT FINDERS FOR AGRICULTURE
UNITED STATES DEPARTMENT OF AGRICULTURE

Washington, D.C.

Milk Production

Released February 17, 2006, by the National Agricultural Statistics Service (NASS), Agricultural Statistics Board, U.S. Department of Agriculture. For information on *Milk Production* call Ann Summa at 202-720-3278, office hours 7:30 a.m. to 4:00 p.m. ET.

January Milk Production Up 5.4 Percent

Milk production in the 23 major States during January totaled 14.0 billion pounds, up 5.4 percent from January 2005. December production, at 13.6 billion pounds, was up 4.1 percent from December 2004.

Production per cow in the 23 major States averaged 1,711 pounds for January, 68 pounds above January 2005.

The number of cows on farms in the 23 major States was 8.19 million head, 103,000 head more than January 2005, and 11,000 head more than December 2005.

2005 Annual Milk Production Up 3.5 Percent from 2004

The annual production of milk for the U.S. during 2005 was 177 billion pounds, 3.5 percent above 2004. Revisions to 2004 production increased the annual total 129 million pounds. Revised 2005 production was up 0.3 percent or 498 million pounds from last month's publication.

Production per cow in the U.S. averaged 19,576 pounds for 2005, 609 pounds above 2004. The average annual rate of milk production per cow has increased 19.1 percent from 1996.

The average number of milk cows on farms in the U.S. during 2005 was 9.04 million head, up 3.2 percent from 2004. The average number of milk cows was revised up 2,000 head for 2004, and up 7,000 head for 2005.

Special Note

Included in this issue are monthly, quarterly, and annual revisions, by State, U.S., and Puerto Rico for 2004-2005.

This issue also contains the Number of Milk Cow Operations and Licensed Dairy Herds, by State, U.S., and Puerto Rico for 2004-2005.

Milk Cows and Production: By Quarter, United States, 2005-2006 ¹

Quarter	Milk Cows ²		Milk Per Cow ³		Milk Production ³		
	2005	2006	2005	2006	2005	2006	Change From 2005
	<i>1,000 Head</i>	<i>1,000 Head</i>	<i>Pounds</i>	<i>Pounds</i>	<i>Million Pounds</i>	<i>Million Pounds</i>	<i>Percent</i>
Jan-Mar	9,002		4,816		43,350		
Apr-Jun	9,041		5,069		45,831		
Jul-Sep	9,060		4,871		44,134		
Oct-Dec	9,060		4,821		43,674		
Annual	9,041		19,576		176,989		

¹ May not add due to rounding.

² Includes dry cows, excludes heifers not yet fresh.

³ Excludes milk sucked by calves.

Milk Cows and Production: By Month, 23 Selected States, 2005-2006 ¹

Month	Milk Cows ²		Milk Per Cow ³		Milk Production ³		
	2005	2006	2005	2006	2005	2006	Change from 2005
	<i>1,000 Head</i>	<i>1,000 Head</i>	<i>Pounds</i>	<i>Pounds</i>	<i>Million Pounds</i>	<i>Million Pounds</i>	<i>Percent</i>
Jan	8,087	8,190	1,643	1,711	13,287	14,011	5.4
Feb	8,084		1,522		12,301		
Mar	8,099		1,707		13,825		
Apr	8,117		1,690		13,717		
May	8,131		1,760		14,311		
Jun	8,138		1,690		13,755		
Jul	8,151		1,683		13,715		
Aug	8,162		1,671		13,640		
Sep	8,167		1,599		13,057		
Oct	8,168		1,637		13,373		
Nov	8,167		1,592		13,002		
Dec	8,179		1,663		13,599		
Annual	8,138		19,857		161,582		

¹ 2005 revised.

² Includes dry cows, excludes heifers not yet fresh.

³ Excludes milk sucked by calves.

Estimated Milk Cows and Production: By Month, United States, 2005-2006 ¹

Month	Milk Cows ²		Milk Per Cow ³		Milk Production ³		
	2005	2006	2005	2006	2005	2006	Change From 2005
	<i>1,000 Head</i>	<i>1,000 Head</i>	<i>Pounds</i>	<i>Pounds</i>	<i>Million Pounds</i>	<i>Million Pounds</i>	<i>Percent</i>
Jan	9,000	9,073	1,624	1,692	14,614	15,350	5.0
Feb	8,996		1,504		13,530		
Mar	9,009		1,688		15,206		
Apr	9,030		1,666		15,047		
May	9,042		1,735		15,697		
Jun	9,050		1,668		15,087		
Jul	9,053		1,656		14,978		
Aug	9,060		1,643		14,896		
Sep	9,066		1,572		14,260		
Oct	9,060		1,613		14,611		
Nov	9,056		1,569		14,205		
Dec	9,063		1,639		14,858		
Annual	9,041		19,576		176,989		

¹ 2005 revised.

² Includes dry cows, excludes heifers not yet fresh.

³ Excludes milk sucked by calves.

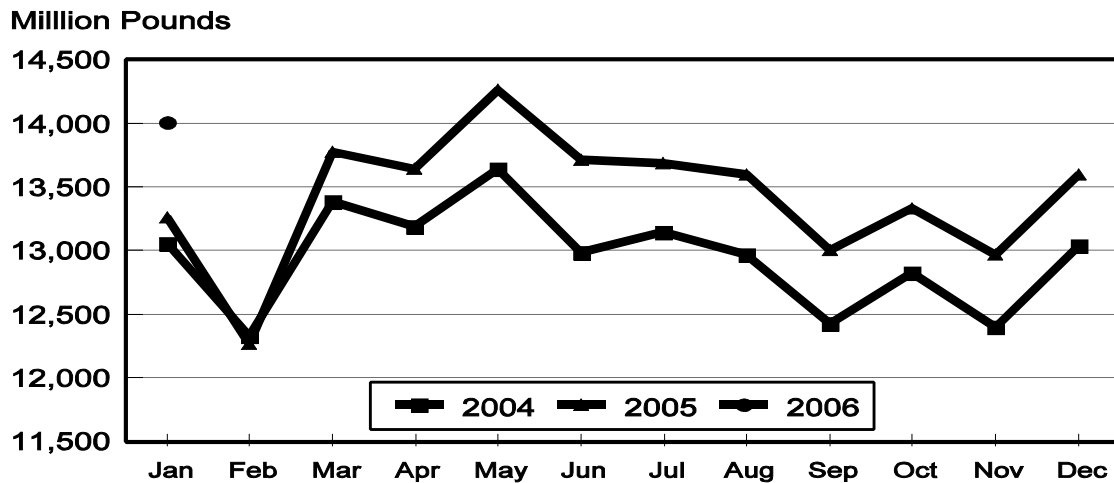
Milk Cows and Production: By State, January 2005-2006

State	Milk Cows ¹		Milk Per Cow ²		Milk Production ²		
	2005	2006	2005	2006	2005	2006	Change From 2005
	<i>1,000 Head</i>	<i>1,000 Head</i>	<i>Pounds</i>	<i>Pounds</i>	<i>Million Pounds</i>	<i>Million Pounds</i>	<i>Percent</i>
AZ	165	165	1,975	2,060	326	340	4.3
CA	1,739	1,772	1,770	1,825	3,078	3,234	5.1
CO	100	105	1,860	1,885	186	198	6.5
FL	138	134	1,520	1,515	210	203	-3.3
ID	436	473	1,830	1,860	798	880	10.3
IL	105	104	1,620	1,630	170	170	
IN	155	161	1,640	1,720	254	277	9.1
IA	190	200	1,750	1,765	333	353	6.0
KS	109	111	1,730	1,780	189	198	4.8
KY	110	101	1,090	1,160	120	117	-2.5
MI	306	313	1,785	1,875	546	587	7.5
MN	460	445	1,510	1,605	695	714	2.7
MO	118	114	1,330	1,440	157	164	4.5
NM	319	342	1,710	1,845	545	631	15.8
NY	650	651	1,535	1,595	998	1,038	4.0
OH	267	273	1,460	1,460	390	399	2.3
OR	120	121	1,570	1,510	188	183	-2.7
PA	564	557	1,540	1,650	869	919	5.8
TX	318	325	1,655	1,845	526	600	14.1
VT	143	143	1,560	1,580	223	226	1.3
VA	105	103	1,465	1,495	154	154	
WA	235	237	1,960	1,945	461	461	
WI	1,235	1,240	1,515	1,585	1,871	1,965	5.0
23-State Total	8,087	8,190	1,643	1,711	13,287	14,011	5.4

¹ Includes dry cows, excludes heifers not yet fresh.

² Excludes milk sucked by calves.

**Monthly Milk Production
23 States**



Milk Cows and Production: By State, December 2004-2005 ¹

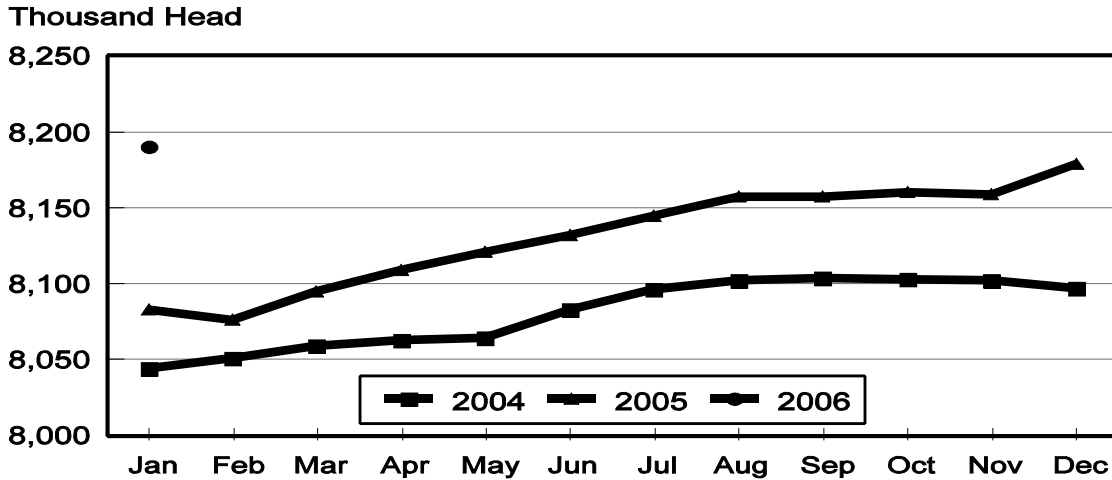
State	Milk Cows ²		Milk per Cow ³		Milk Production ³		
	2004	2005	2004	2005	2004	2005	Change From 2004
	<i>1,000 Head</i>	<i>1,000 Head</i>	<i>Pounds</i>	<i>Pounds</i>	<i>Million Pounds</i>	<i>Million Pounds</i>	<i>Percent</i>
AZ	166	163	1,905	1,965	316	320	1.3
CA	1,741	1,771	1,775	1,795	3,090	3,179	2.9
CO	102	105	1,845	1,890	188	198	5.3
FL	138	135	1,450	1,360	200	184	-8.0
ID	435	472	1,800	1,830	783	864	10.3
IL	106	104	1,540	1,570	163	163	
IN	155	158	1,635	1,715	253	271	7.1
IA	190	200	1,715	1,725	326	345	5.8
KS	111	111	1,680	1,730	186	192	3.2
KY	110	102	1,055	1,110	116	113	-2.6
MI	307	312	1,735	1,820	533	568	6.6
MN	460	445	1,475	1,545	679	688	1.3
MO	119	114	1,270	1,380	151	157	4.0
NM	321	339	1,675	1,780	538	603	12.1
NY	650	650	1,485	1,545	965	1,004	4.0
OH	266	273	1,450	1,430	386	390	1.0
OR	120	121	1,570	1,490	188	180	-4.3
PA	565	557	1,490	1,580	842	880	4.5
TX	319	324	1,555	1,720	496	557	12.3
VT	143	143	1,515	1,535	217	220	1.4
VA	104	104	1,420	1,440	148	150	1.4
WA	235	237	1,925	1,910	452	453	0.2
WI	1,236	1,239	1,490	1,550	1,842	1,920	4.2
23-State Total	8,099	8,179	1,612	1,663	13,058	13,599	4.1

¹ 2004 and 2005 revised.

² Includes dry cows, excludes heifers not yet fresh.

³ Excludes milk sucked by calves.

**Monthly Milk Cows
23 States**



Milk Cows and Production: United States, 1996-2005 ¹

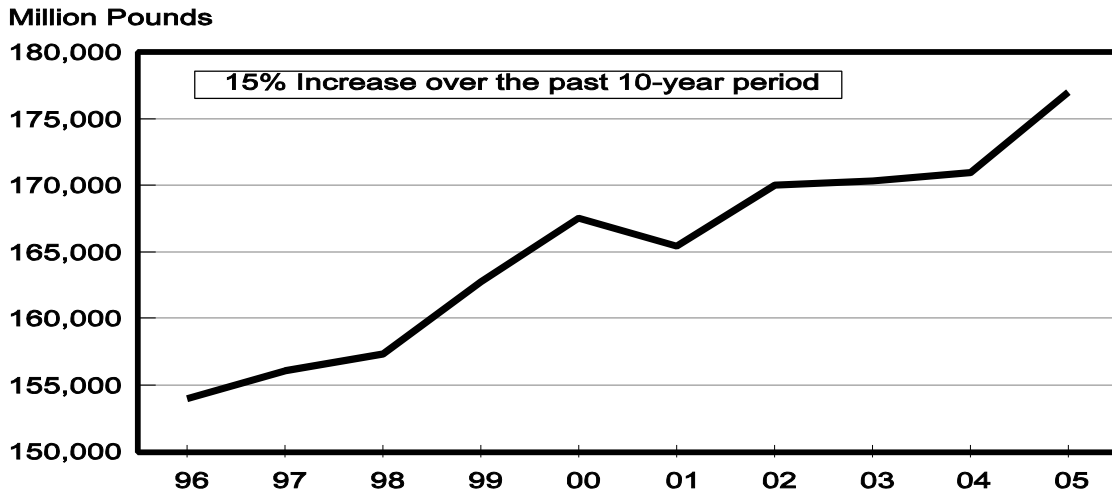
Year	Milk Cows ² <i>1,000 Head</i>	Production per Cow ³		Milk Production ³
		Milk <i>Pounds</i>		Total <i>Million Pounds</i>
1996	9,372	16,433	154,006	
1997	9,252	16,871	156,091	
1998	9,151	17,185	157,262	
1999	9,153	17,763	162,589	
2000	9,199	18,197	167,393	
2001	9,103	18,162	165,332	
2002	9,139	18,608	170,063	
2003	9,083	18,760	170,394	
2004	9,012	18,967	170,934	
2005	9,041	19,576	176,989	

¹ May not add due to rounding.

² Average number during year, excluding heifers not yet fresh.

³ Excludes milk sucked by calves.

**Milk Production, 1996-2005
United States**



Milk Cows and Production: By State, United States, and Puerto Rico, 2004-2005

State	Milk Cows ¹		Milk Per Cow ²		Milk Production ²		Change From 2004
	2004	2005	2004	2005	2004	2005	
	<i>1,000 Head</i>	<i>1,000 Head</i>	<i>Pounds</i>	<i>Pounds</i>	<i>Million Pounds</i>	<i>Million Pounds</i>	<i>Percent</i>
AL	17	16	14,412	14,000	245	224	-8.6
AK	1.2	1.1	12,167	12,273	14.60	13.50	-7.5
AZ	160	163	22,788	22,957	3,646	3,742	2.6
AR	24	22	13,458	13,500	323	297	-8.0
CA	1,725	1,755	21,139	21,404	36,465	37,564	3.0
CO	102	104	21,412	22,577	2,184	2,348	7.5
CT	20	20	19,600	19,200	392	384	-2.0
DE	7.4	7.4	17,230	17,716	127.5	131.1	2.8
FL	138	137	16,326	16,577	2,253	2,271	0.8
GA	84	81	16,857	17,259	1,416	1,398	-1.3
HI	6.1	5.4	13,197	12,889	80.5	69.6	-13.5
ID	424	455	21,446	22,332	9,093	10,161	11.7
IL	107	104	18,486	18,827	1,978	1,958	-1.0
IN	151	156	20,046	20,295	3,027	3,166	4.6
IA	193	194	19,953	20,722	3,851	4,020	4.4
KS	113	111	19,611	20,505	2,216	2,276	2.7
KY	110	106	12,927	12,934	1,422	1,371	-3.6
LA	38	35	12,605	12,371	479	433	-9.6
ME	34	33	18,000	18,030	612	595	-2.8
MD	74	72	15,703	16,125	1,162	1,161	-0.1
MA	17	17	17,412	17,059	296	290	-2.0
MI	303	311	20,891	21,656	6,330	6,735	6.4
MN	463	453	17,499	18,091	8,102	8,195	1.1
MS	27	25	14,037	15,240	379	381	0.5
MO	122	117	15,139	16,026	1,847	1,875	1.5
MT	18	19	19,333	19,579	348	372	6.9
NE	61	60	17,197	17,950	1,049	1,077	2.7
NV	25	25	20,360	21,680	509	542	6.5
NH	16	16	18,938	18,875	303	302	-0.3
NJ	12	12	16,667	16,000	200	192	-4.0
NM	326	328	20,666	21,192	6,737	6,951	3.2
NY	655	648	17,786	18,639	11,650	12,078	3.7
NC	57	54	17,649	18,611	1,006	1,005	-0.1
ND	34	33	15,471	15,970	526	527	0.2
OH	263	270	17,338	17,567	4,560	4,743	4.0
OK	78	75	16,192	16,480	1,263	1,236	-2.1
OR	120	121	18,917	18,876	2,270	2,284	0.6
PA	562	561	17,904	18,722	10,062	10,503	4.4
RI	1.2	1.0	16,333	18,700	19.6	18.7	-4.6
SC	17	18	16,882	16,111	287	290	1.0
SD	80	81	16,838	17,741	1,347	1,437	6.7
TN	75	70	15,400	15,743	1,155	1,102	-4.6
TX	319	320	18,837	20,131	6,009	6,442	7.2
UT	88	88	18,284	18,875	1,609	1,661	3.2
VT	145	143	17,890	18,469	2,594	2,641	1.8
VA	105	105	16,486	16,990	1,731	1,784	3.1
WA	237	241	22,852	23,270	5,416	5,608	3.5
WV	13	13	14,923	14,923	194	194	0.0
WI	1,241	1,236	17,796	18,500	22,085	22,866	3.5
WY	4.3	5.0	14,744	14,860	63.4	74.3	17.2
US ³	9,012	9,041	18,967	19,576	170,934	176,989	3.5
PR ⁴	93	91	8,172	8,154	760	742	-2.4

¹ Average number during year, excluding heifers not yet fresh.

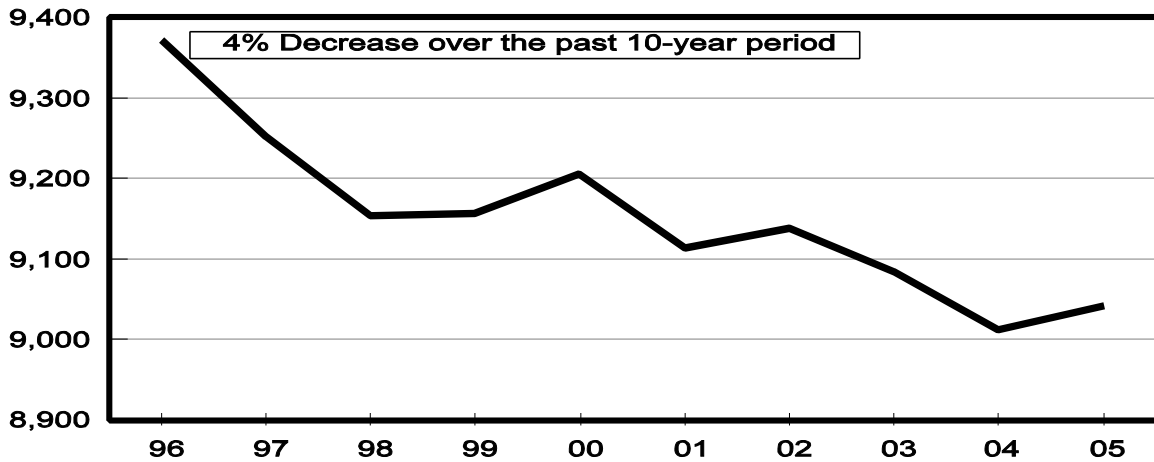
² Excludes milk sucked by calves.

³ May not add due to rounding.

⁴ Puerto Rico is not included in the U.S. total.

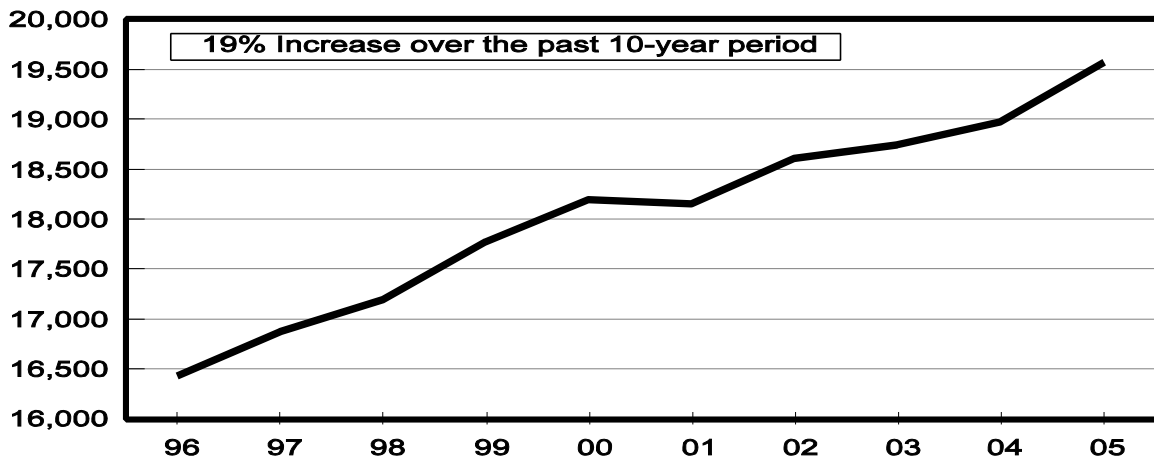
Milk Cows, 1996-2005 United States

Thousand Head



Rate per Cow, 1996-2005 United States

Pounds



Milk Cows: Number by Month, State, 23 State, and United States, 2004 ¹

State	Jan	Feb	Mar	Apr	May	Jun	
	<i>1,000 Head</i>	<i>1,000 Head</i>	<i>1,000 Head</i>	<i>1,000 Head</i>	<i>1,000 Head</i>	<i>1,000 Head</i>	
AZ	155	155	155	155	155	155	
CA	1,701	1,706	1,710	1,716	1,720	1,724	
CO	99	100	100	101	102	103	
FL	140	139	138	138	139	139	
ID	412	412	413	414	417	422	
IL	108	108	108	108	108	108	
IN	145	148	151	151	151	151	
IA	196	195	195	195	195	194	
KS	111	112	113	113	114	115	
KY	112	111	110	109	110	112	
MI	300	300	300	301	302	302	
MN	465	465	465	465	460	460	
MO	125	124	123	124	124	124	
NM	325	326	327	327	327	328	
NY	658	660	660	658	655	656	
OH	258	259	260	261	263	265	
OR	118	119	120	120	120	120	
PA	563	564	564	561	557	557	
TX	317	317	317	317	317	320	
VT	146	146	145	145	145	145	
VA	105	105	105	105	105	105	
WA	240	240	239	239	239	238	
WI	1,245	1,245	1,244	1,242	1,242	1,241	
23-Sts	8,044	8,056	8,062	8,065	8,067	8,084	
US ³	8,986	8,996	9,005	8,995	9,000	9,016	
	Jul	Aug	Sep	Oct	Nov	Dec	Annual Avg. ²
AZ	158	163	165	167	168	166	160
CA	1,729	1,733	1,737	1,740	1,741	1,741	1,725
CO	103	103	103	103	103	102	102
FL	139	138	137	137	137	138	138
ID	427	431	431	434	434	435	424
IL	107	107	107	106	106	106	107
IN	150	149	150	152	154	155	151
IA	193	192	191	191	190	190	193
KS	115	115	115	114	112	111	113
KY	111	110	109	109	109	110	110
MI	303	303	303	304	306	307	303
MN	465	465	465	460	460	460	463
MO	122	121	121	120	120	119	122
NM	328	327	325	323	322	321	326
NY	656	654	654	653	651	650	655
OH	265	266	266	266	266	266	263
OR	120	120	120	120	120	120	120
PA	559	560	562	563	563	565	562
TX	320	320	320	320	320	319	319
VT	145	145	145	145	144	143	145
VA	104	104	104	104	104	104	105
WA	237	236	235	234	235	235	237
WI	1,240	1,240	1,239	1,238	1,237	1,236	1,241
23-Sts	8,096	8,102	8,104	8,103	8,102	8,099	8,082
US ³	9,025	9,027	9,029	9,022	9,019	9,016	9,012

¹ Includes dry cows, excludes heifers not yet fresh.

² Average based on monthly totals.

³ U.S. monthly estimates are derived by proportionally allocating the quarterly estimates using the 23-state monthly total.

Milk Cows: Number by Month, State, 23 State, and United States, 2005 ¹

State	Jan	Feb	Mar	Apr	May	Jun	
	<i>1,000 Head</i>	<i>1,000 Head</i>	<i>1,000 Head</i>	<i>1,000 Head</i>	<i>1,000 Head</i>	<i>1,000 Head</i>	
AZ	165	164	164	164	163	162	
CA	1,739	1,742	1,744	1,747	1,751	1,753	
CO	100	100	102	103	104	105	
FL	138	139	139	138	138	137	
ID	436	437	441	443	445	451	
IL	105	105	105	105	104	104	
IN	155	155	156	157	157	156	
IA	190	190	191	192	193	193	
KS	109	109	110	111	112	112	
KY	110	110	107	107	107	107	
MI	306	308	309	311	312	313	
MN	460	455	455	455	455	455	
MO	118	117	119	119	119	118	
NM	319	320	322	323	323	325	
NY	650	650	648	646	646	647	
OH	267	267	268	269	270	270	
OR	120	120	121	121	121	121	
PA	564	560	560	563	565	563	
TX	318	317	318	319	320	320	
VT	143	143	143	144	144	143	
VA	105	105	105	105	105	105	
WA	235	237	239	241	243	243	
WI	1,235	1,234	1,233	1,234	1,234	1,235	
23-Sts	8,087	8,084	8,099	8,117	8,131	8,138	
US ³	9,000	8,996	9,009	9,030	9,042	9,050	
	Jul	Aug	Sep	Oct	Nov	Dec	Annual Avg. ²
AZ	162	161	161	161	161	163	163
CA	1,756	1,759	1,762	1,765	1,770	1,771	1,755
CO	105	105	106	106	105	105	104
FL	136	135	134	135	136	135	137
ID	460	468	469	470	471	472	455
IL	104	104	104	104	104	104	104
IN	156	157	156	155	157	158	156
IA	193	196	197	198	199	200	194
KS	112	112	112	112	112	111	111
KY	106	106	105	103	102	102	106
MI	313	314	313	313	312	312	311
MN	455	450	450	450	445	445	453
MO	117	115	115	114	114	114	117
NM	328	331	333	335	337	339	328
NY	647	647	649	650	648	650	648
OH	270	270	270	270	271	273	270
OR	121	121	121	121	121	121	121
PA	561	562	561	558	556	557	561
TX	320	320	320	320	321	324	320
VT	143	143	142	142	142	143	143
VA	105	105	105	105	105	104	105
WA	245	245	245	243	240	237	241
WI	1,236	1,236	1,237	1,238	1,238	1,239	1,236
23-Sts	8,151	8,162	8,167	8,168	8,167	8,179	8,138
US ³	9,053	9,060	9,066	9,060	9,056	9,063	9,041

¹ Includes dry cows, excludes heifers not yet fresh.

² Average based on monthly totals.

³ U.S. monthly estimates are derived by proportionally allocating the quarterly estimates using the 23-state monthly total.

**Milk Produced per Cow: by Month,
State, 23 States, and United States, 2004 ¹**

State	Jan	Feb	Mar	Apr	May	Jun	
	<i>Pounds</i>	<i>Pounds</i>	<i>Pounds</i>	<i>Pounds</i>	<i>Pounds</i>	<i>Pounds</i>	
AZ	2,010	1,960	2,120	2,090	2,095	1,955	
CA	1,760	1,675	1,815	1,790	1,830	1,755	
CO	1,830	1,680	1,830	1,800	1,830	1,750	
FL	1,435	1,415	1,550	1,515	1,525	1,395	
ID	1,800	1,660	1,780	1,770	1,850	1,800	
IL	1,610	1,520	1,650	1,580	1,620	1,540	
IN	1,695	1,600	1,850	1,800	1,850	1,610	
IA	1,680	1,590	1,730	1,700	1,760	1,630	
KS	1,695	1,545	1,680	1,675	1,710	1,635	
KY	1,090	1,035	1,175	1,155	1,190	1,055	
MI	1,780	1,660	1,810	1,765	1,810	1,755	
MN	1,505	1,415	1,510	1,480	1,555	1,480	
MO	1,265	1,185	1,345	1,370	1,380	1,250	
NM	1,760	1,660	1,765	1,730	1,820	1,755	
NY	1,490	1,400	1,510	1,500	1,580	1,490	
OH	1,450	1,370	1,510	1,500	1,540	1,440	
OR	1,565	1,475	1,560	1,590	1,665	1,615	
PA	1,500	1,425	1,570	1,550	1,605	1,495	
TX	1,660	1,585	1,735	1,705	1,720	1,570	
VT	1,515	1,445	1,530	1,500	1,570	1,495	
VA	1,410	1,320	1,465	1,450	1,455	1,350	
WA	1,895	1,790	1,945	1,905	1,985	1,920	
WI	1,505	1,405	1,510	1,485	1,560	1,485	
23-Sts	1,624	1,532	1,662	1,638	1,694	1,606	
US ²	1,603	1,513	1,640	1,615	1,672	1,585	
	Jul	Aug	Sep	Oct	Nov	Dec	Annual Avg.
AZ	1,810	1,710	1,660	1,785	1,760	1,905	22,788
CA	1,780	1,775	1,715	1,770	1,700	1,775	21,139
CO	1,760	1,835	1,750	1,785	1,760	1,845	21,412
FL	1,340	1,225	1,025	1,165	1,250	1,450	16,326
ID	1,860	1,850	1,780	1,800	1,720	1,800	21,446
IL	1,520	1,490	1,440	1,480	1,450	1,540	18,486
IN	1,640	1,620	1,540	1,660	1,610	1,635	20,046
IA	1,660	1,640	1,580	1,640	1,620	1,715	19,953
KS	1,625	1,600	1,550	1,590	1,580	1,680	19,611
KY	1,065	1,045	990	1,035	1,020	1,055	12,927
MI	1,790	1,755	1,670	1,730	1,660	1,735	20,891
MN	1,460	1,440	1,365	1,425	1,390	1,475	17,499
MO	1,240	1,210	1,150	1,230	1,215	1,270	15,139
NM	1,770	1,740	1,670	1,715	1,630	1,675	20,666
NY	1,520	1,500	1,420	1,470	1,410	1,485	17,786
OH	1,450	1,430	1,370	1,410	1,390	1,450	17,338
OR	1,660	1,615	1,565	1,575	1,490	1,570	18,917
PA	1,510	1,475	1,415	1,465	1,420	1,490	17,904
TX	1,540	1,465	1,405	1,470	1,455	1,555	18,837
VT	1,525	1,495	1,430	1,455	1,415	1,515	17,890
VA	1,370	1,335	1,290	1,355	1,340	1,420	16,486
WA	1,965	1,910	1,870	1,895	1,825	1,925	22,852
WI	1,520	1,510	1,440	1,475	1,415	1,490	17,796
23-Sts	1,623	1,601	1,533	1,585	1,533	1,612	19,243
US ²	1,596	1,575	1,508	1,561	1,511	1,589	18,967

¹ Excludes milk sucked by calves.

² U.S. monthly estimates are derived by proportionally allocating the quarterly estimates using the 23-state monthly total.

**Milk Produced per Cow: by Month,
State, 23 States and United States, 2005 ¹**

State	Jan	Feb	Mar	Apr	May	Jun	
	<i>Pounds</i>	<i>Pounds</i>	<i>Pounds</i>	<i>Pounds</i>	<i>Pounds</i>	<i>Pounds</i>	
AZ	1,975	1,840	2,080	2,060	2,085	1,950	
CA	1,770	1,635	1,850	1,825	1,880	1,815	
CO	1,860	1,720	1,925	1,865	1,950	1,905	
FL	1,520	1,475	1,640	1,570	1,580	1,440	
ID	1,830	1,680	1,880	1,850	1,930	1,900	
IL	1,620	1,500	1,670	1,605	1,660	1,600	
IN	1,640	1,600	1,700	1,780	1,800	1,715	
IA	1,750	1,615	1,795	1,775	1,845	1,725	
KS	1,730	1,575	1,810	1,755	1,815	1,730	
KY	1,090	1,000	1,140	1,150	1,195	1,105	
MI	1,785	1,660	1,825	1,830	1,915	1,835	
MN	1,510	1,405	1,570	1,540	1,610	1,540	
MO	1,330	1,230	1,400	1,430	1,490	1,380	
NM	1,710	1,560	1,790	1,780	1,880	1,840	
NY	1,535	1,415	1,570	1,565	1,665	1,590	
OH	1,460	1,370	1,520	1,520	1,595	1,500	
OR	1,570	1,460	1,640	1,610	1,660	1,610	
PA	1,540	1,420	1,600	1,600	1,675	1,595	
TX	1,655	1,560	1,795	1,780	1,830	1,720	
VT	1,560	1,430	1,595	1,570	1,650	1,565	
VA	1,465	1,345	1,495	1,485	1,535	1,420	
WA	1,960	1,805	2,020	1,965	2,025	1,950	
WI	1,515	1,400	1,560	1,540	1,630	1,590	
23-Sts	1,643	1,522	1,707	1,690	1,760	1,690	
US ²	1,624	1,504	1,688	1,666	1,735	1,668	
	Jul	Aug	Sep	Oct	Nov	Dec	Annual Avg.
AZ	1,865	1,770	1,725	1,840	1,850	1,965	22,957
CA	1,780	1,795	1,750	1,785	1,725	1,795	21,404
CO	1,960	1,970	1,875	1,870	1,820	1,890	22,577
FL	1,315	1,230	1,105	1,135	1,220	1,360	16,577
ID	1,960	1,940	1,850	1,870	1,790	1,830	22,332
IL	1,580	1,515	1,450	1,510	1,480	1,570	18,827
IN	1,700	1,660	1,615	1,685	1,650	1,715	20,295
IA	1,720	1,740	1,665	1,690	1,640	1,725	20,722
KS	1,695	1,690	1,610	1,680	1,650	1,730	20,505
KY	1,065	1,030	980	1,040	1,030	1,110	12,934
MI	1,850	1,830	1,750	1,790	1,745	1,820	21,656
MN	1,510	1,510	1,435	1,475	1,455	1,545	18,091
MO	1,360	1,300	1,210	1,280	1,280	1,380	16,026
NM	1,845	1,825	1,710	1,760	1,720	1,780	21,192
NY	1,600	1,600	1,515	1,550	1,485	1,545	18,639
OH	1,480	1,460	1,420	1,430	1,410	1,430	17,567
OR	1,640	1,630	1,570	1,560	1,470	1,490	18,876
PA	1,590	1,575	1,500	1,550	1,500	1,580	18,722
TX	1,710	1,625	1,515	1,605	1,630	1,720	20,131
VT	1,565	1,550	1,480	1,505	1,465	1,535	18,469
VA	1,390	1,360	1,325	1,370	1,370	1,440	16,990
WA	1,985	1,970	1,895	1,925	1,840	1,910	23,270
WI	1,600	1,595	1,510	1,535	1,480	1,550	18,500
23-Sts	1,683	1,671	1,599	1,637	1,592	1,663	19,857
US ²	1,656	1,643	1,572	1,613	1,569	1,639	19,576

¹ Excludes milk sucked by calves.

² U.S. monthly estimates are derived by proportionally allocating the quarterly estimates using the 23-state monthly total.

**Milk Production: Total by Month, State,
23 States, and United States, 2004¹**

State	Jan	Feb	Mar	Apr	May	Jun	
	<i>Million Pounds</i>	<i>Million Pounds</i>	<i>Million Pounds</i>	<i>Million Pounds</i>	<i>Million Pounds</i>	<i>Million Pounds</i>	
AZ	312	304	329	324	325	303	
CA	2,994	2,858	3,104	3,072	3,148	3,026	
CO	181	168	183	182	187	180	
FL	201	197	214	209	212	194	
ID	742	684	735	733	771	760	
IL	174	164	178	171	175	166	
IN	246	237	279	272	279	243	
IA	329	310	337	332	343	316	
KS	188	173	190	189	195	188	
KY	122	115	129	126	131	118	
MI	534	498	543	531	547	530	
MN	700	658	702	688	715	681	
MO	158	147	165	170	171	155	
NM	572	541	577	566	595	576	
NY	980	924	997	987	1,035	977	
OH	374	355	393	392	405	382	
OR	185	176	187	191	200	194	
PA	845	804	885	870	894	833	
TX	526	502	550	540	545	502	
VT	221	211	222	218	228	217	
VA	148	139	154	152	153	142	
WA	455	430	465	455	474	457	
WI	1,874	1,749	1,878	1,844	1,938	1,843	
23-Sts	13,061	12,344	13,396	13,214	13,666	12,983	
US ³	14,404	13,614	14,769	14,543	15,040	14,287	
	Jul	Aug	Sep	Oct	Nov	Dec	Annual Total ²
AZ	286	279	274	298	296	316	3,646
CA	3,078	3,076	2,979	3,080	2,960	3,090	36,465
CO	181	189	180	184	181	188	2,184
FL	186	169	140	160	171	200	2,253
ID	794	797	767	781	746	783	9,093
IL	163	159	154	157	154	163	1,978
IN	246	241	231	252	248	253	3,027
IA	320	315	302	313	308	326	3,851
KS	187	184	178	181	177	186	2,216
KY	118	115	108	113	111	116	1,422
MI	542	532	506	526	508	533	6,330
MN	679	670	635	656	639	679	8,102
MO	151	146	139	148	146	151	1,847
NM	581	569	543	554	525	538	6,737
NY	997	981	929	960	918	965	11,650
OH	384	380	364	375	370	386	4,560
OR	199	194	188	189	179	188	2,270
PA	844	826	795	825	799	842	10,062
TX	493	469	450	470	466	496	6,009
VT	221	217	207	211	204	217	2,594
VA	142	139	134	141	139	148	1,731
WA	466	451	439	443	429	452	5,416
WI	1,885	1,872	1,784	1,826	1,750	1,842	22,085
23-Sts	13,143	12,970	12,426	12,843	12,424	13,058	155,528
US ³	14,404	14,214	13,618	14,088	13,629	14,324	170,934

¹ Excludes milk sucked by calves.

² Total milk production for year.

³ U.S. monthly estimates are derived by proportionally allocating the quarterly estimates using the 23-state monthly total.

**Milk Production: Total by Month, State,
23 States, and United States, 2005 ¹**

State	Jan	Feb	Mar	Apr	May	Jun	
	<i>Million Pounds</i>	<i>Million Pounds</i>	<i>Million Pounds</i>	<i>Million Pounds</i>	<i>Million Pounds</i>	<i>Million Pounds</i>	
AZ	326	302	341	338	340	316	
CA	3,078	2,848	3,226	3,188	3,292	3,182	
CO	186	172	196	192	203	200	
FL	210	205	228	217	218	197	
ID	798	734	829	820	859	857	
IL	170	158	175	169	173	166	
IN	254	248	265	279	283	268	
IA	333	307	343	341	356	333	
KS	189	172	199	195	203	194	
KY	120	110	122	123	128	118	
MI	546	511	564	569	597	574	
MN	695	639	714	701	733	701	
MO	157	144	167	170	177	163	
NM	545	499	576	575	607	598	
NY	998	920	1,017	1,011	1,076	1,029	
OH	390	366	407	409	431	405	
OR	188	175	198	195	201	195	
PA	869	795	896	901	946	898	
TX	526	495	571	568	586	550	
VT	223	204	228	226	238	224	
VA	154	141	157	156	161	149	
WA	461	428	483	474	492	474	
WI	1,871	1,728	1,923	1,900	2,011	1,964	
23-Sts	13,287	12,301	13,825	13,717	14,311	13,755	
US ³	14,614	13,530	15,206	15,047	15,697	15,087	
	Jul	Aug	Sep	Oct	Nov	Dec	Annual Total ²
AZ	302	285	278	296	298	320	3,742
CA	3,126	3,157	3,084	3,151	3,053	3,179	37,564
CO	206	207	199	198	191	198	2,348
FL	179	166	148	153	166	184	2,271
ID	902	908	868	879	843	864	10,161
IL	164	158	151	157	154	163	1,958
IN	265	261	252	261	259	271	3,166
IA	332	341	328	335	326	345	4,020
KS	190	189	180	188	185	192	2,276
KY	113	109	103	107	105	113	1,371
MI	579	575	548	560	544	568	6,735
MN	687	680	646	664	647	688	8,195
MO	159	150	139	146	146	157	1,875
NM	605	604	569	590	580	603	6,951
NY	1,035	1,035	983	1,008	962	1,004	12,078
OH	400	394	383	386	382	390	4,743
OR	198	197	190	189	178	180	2,284
PA	892	885	842	865	834	880	10,503
TX	547	520	485	514	523	557	6,442
VT	224	222	210	214	208	220	2,641
VA	146	143	139	144	144	150	1,784
WA	486	483	464	468	442	453	5,608
WI	1,978	1,971	1,868	1,900	1,832	1,920	22,866
23-Sts	13,715	13,640	13,057	13,373	13,002	13,599	161,582
US ³	14,978	14,896	14,260	14,611	14,205	14,858	176,989

¹ Excludes milk sucked by calves.

² Total milk production for year.

³ U.S. monthly estimates are derived by proportionally allocating the quarterly estimates using the 23-state monthly total.

**Milk Cows and Production: Number and Milk Produced
by Quarter, State, and United States, 2004**

State	Milk Cows ¹				Milk Production ²			
	Jan-Mar	Apr-Jun	Jul-Sep	Oct-Dec	Jan-Mar	Apr-Jun	Jul-Sep	Oct-Dec
	<i>1,000 Head</i>	<i>1,000 Head</i>	<i>1,000 Head</i>	<i>1,000 Head</i>	<i>Million Pounds</i>	<i>Million Pounds</i>	<i>Million Pounds</i>	<i>Million Pounds</i>
AL	17	17	17	17	71	66	52	56
AK	1.2	1.2	1.2	1.2	3.60	3.80	3.80	3.40
AZ	155	155	162	167	945	952	839	910
AR	25	24	24	23	89	88	74	72
CA	1,706	1,720	1,733	1,741	8,956	9,246	9,133	9,130
CO	100	102	103	103	532	549	550	553
CT	21	20	20	20	102	100	95	95
DE	7.5	7.5	7.0	7.5	34.0	33.0	29.0	31.5
FL	139	139	138	137	612	615	495	531
GA	84	84	84	84	381	382	319	334
HI	6.5	6.2	6.0	5.8	21.9	22.2	19.0	17.4
ID	412	418	430	434	2,161	2,264	2,358	2,310
IL	108	108	107	106	516	512	476	474
IN	148	151	150	154	762	794	718	753
IA	195	195	192	190	976	991	937	947
KS	112	114	115	112	551	572	549	544
KY	111	110	110	109	366	375	341	340
LA	40	38	37	36	139	131	101	108
ME	34	34	34	33	151	157	156	148
MD	76	75	73	73	300	300	277	285
MA	17	17	17	17	74	76	73	73
MI	300	302	303	306	1,575	1,608	1,580	1,567
MN	465	462	465	460	2,060	2,084	1,984	1,974
MS	28	27	27	26	109	104	80	86
MO	124	124	121	120	470	496	436	445
MT	18	18	18	18	85	88	88	87
NE	61	60	61	61	267	266	254	262
NV	25	25	25	25	127	125	129	128
NH	16	16	16	16	77	78	74	74
NJ	12	12	12	12	52	52	49	47
NM	326	327	327	322	1,690	1,737	1,693	1,617
NY	659	656	655	651	2,901	2,999	2,907	2,843
NC	58	57	56	55	264	259	241	242
ND	33	34	34	33	129	139	131	127
OH	259	263	266	266	1,122	1,179	1,128	1,131
OK	80	79	77	75	330	329	307	297
OR	119	120	120	120	548	585	581	556
PA	564	558	560	564	2,534	2,597	2,465	2,466
RI	1.2	1.2	1.1	1.1	5.2	5.2	4.7	4.5
SC	17	17	17	18	79	76	63	69
SD	80	81	80	80	333	343	333	338
TN	77	76	75	73	310	310	265	270
TX	317	318	320	320	1,578	1,587	1,412	1,432
UT	88	87	88	89	387	409	416	397
VT	146	145	145	144	654	663	645	632
VA	105	105	104	104	441	447	415	428
WA	240	239	236	235	1,350	1,386	1,356	1,324
WV	13	13	13	13	50	49	47	48
WI	1,245	1,242	1,240	1,237	5,501	5,625	5,541	5,418
WY	4.1	4.2	4.3	4.4	14.8	16.0	16.3	16.3
US ³	8,996	9,004	9,027	9,019	42,787	43,870	42,236	42,041

¹ Quarterly average includes dry cows, excludes heifers not yet fresh.

² Excludes milk sucked by calves.

³ May not add due to rounding.

**Milk Cows and Production: Number and Milk Produced
by Quarter, State, and United States, 2005**

State	Milk Cows ¹				Milk Production ²			
	Jan-Mar	Apr-Jun	Jul-Sep	Oct-Dec	Jan-Mar	Apr-Jun	Jul-Sep	Oct-Dec
	<i>1,000 Head</i>	<i>1,000 Head</i>	<i>1,000 Head</i>	<i>1,000 Head</i>	<i>Million Pounds</i>	<i>Million Pounds</i>	<i>Million Pounds</i>	<i>Million Pounds</i>
AL	16	16	16	15	64	63	47	50
AK	1.2	1.2	1.1	0.9	3.60	3.80	3.40	2.70
AZ	164	163	161	162	969	994	865	914
AR	23	23	22	21	77	80	73	67
CA	1,742	1,750	1,759	1,769	9,152	9,662	9,367	9,383
CO	101	104	105	105	554	595	612	587
CT	20	20	20	20	99	101	92	92
DE	7.5	7.5	7.5	7.1	34.0	35.0	32.3	29.8
FL	139	138	135	135	643	632	493	503
GA	83	82	81	79	379	382	310	327
HI	5.7	5.4	5.3	5.1	17.7	19.0	17.4	15.5
ID	438	446	466	471	2,361	2,536	2,678	2,586
IL	105	104	104	104	503	508	473	474
IN	155	157	156	157	767	830	778	791
IA	190	193	195	199	983	1,030	1,001	1,006
KS	109	112	112	112	560	592	559	565
KY	109	107	106	102	352	369	325	325
LA	36	36	34	32	128	124	88	93
ME	33	33	33	32	147	155	151	142
MD	73	72	72	71	299	300	281	281
MA	17	17	16	16	73	76	72	69
MI	308	312	313	312	1,621	1,740	1,702	1,672
MN	457	455	452	447	2,048	2,135	2,013	1,999
MS	26	26	25	24	109	109	81	82
MO	118	119	116	114	468	510	448	449
MT	18	19	19	19	89	95	95	93
NE	60	60	60	60	268	279	263	267
NV	25	25	25	26	128	137	137	140
NH	16	16	16	16	75	79	74	74
NJ	12	12	12	12	49	50	47	46
NM	320	324	331	337	1,620	1,780	1,778	1,773
NY	649	646	648	649	2,935	3,116	3,053	2,974
NC	55	54	54	53	260	266	248	231
ND	33	33	32	33	128	135	132	132
OH	267	270	270	271	1,163	1,245	1,177	1,158
OK	75	75	75	75	311	321	311	293
OR	120	121	121	121	561	591	585	547
PA	561	564	561	557	2,560	2,745	2,619	2,579
RI	1.0	1.0	1.1	1.0	4.6	5.0	4.7	4.4
SC	18	18	17	17	81	79	61	69
SD	81	81	81	81	350	371	358	358
TN	72	71	69	69	295	300	250	257
TX	318	320	320	322	1,592	1,704	1,552	1,594
UT	88	89	88	85	404	417	427	413
VT	143	144	143	142	655	688	656	642
VA	105	105	105	105	452	466	428	438
WA	237	242	245	240	1,372	1,440	1,433	1,363
WV	13	13	13	13	48	49	48	49
WI	1,234	1,234	1,236	1,238	5,522	5,875	5,817	5,652
WY	4.4	4.5	5.0	6.2	15.8	17.1	18.5	22.9
US ³	9,002	9,041	9,060	9,060	43,350	45,831	44,134	43,674

¹ Quarterly average includes dry cows, excludes heifers not yet fresh.

² Excludes milk sucked by calves.

³ May not add due to rounding.

**Number of Operations with Milk Cows and Number of Licensed Dairy Herds,
by State, United States, and Puerto Rico, 2004-2005**

State	2004		2005	
	Operations with Milk Cows ¹	Licensed Dairy Herds ²	Operations with Milk Cows ¹	Licensed Dairy Herds ²
	<i>Number</i>	<i>Number</i>	<i>Number</i>	<i>Number</i>
AL	190	100	190	90
AK	30	10	30	10
AZ	230	150	210	140
AR	380	240	320	210
CA	2,300	2,030	2,300	1,970
CO	670	170	660	170
CT	250	180	230	170
DE	90	90	85	90
FL	500	190	480	180
GA	630	330	610	320
HI	30	10	30	5
ID	900	755	850	725
IL	1,500	1,210	1,400	1,155
IN	2,300	1,900	2,200	1,830
IA	2,600	2,420	2,500	2,370
KS	950	490	900	460
KY	2,300	1,435	2,200	1,335
LA	420	310	390	280
ME	500	390	470	370
MD	850	695	850	655
MA	270	220	250	200
MI	2,900	2,680	2,800	2,590
MN	6,100	5,810	5,800	5,530
MS	390	250	350	230
MO	2,800	1,840	2,700	1,780
MT	600	120	650	120
NE	830	450	770	405
NV	120	30	110	30
NH	210	140	200	140
NJ	160	130	150	120
NM	450	170	450	170
NY	6,900	6,600	6,700	6,430
NC	800	375	680	365
ND	600	400	550	360
OH	4,500	3,780	4,400	3,610
OK	1,500	400	1,400	380
OR	780	350	790	330
PA	9,100	8,720	8,900	8,700
RI	30	20	30	20
SC	200	110	200	110
SD	1,000	700	800	650
TN	1,200	760	1,100	710
TX	1,700	810	1,500	780
UT	600	360	580	345
VT	1,300	1,280	1,300	1,230
VA	1,400	850	1,400	815
WA	820	620	810	610
WV	480	140	470	130
WI	15,900	15,570	15,300	15,100
WY	260	35	250	30
US	81,520	66,825	78,295	64,555
PR ³	1,600	380	1,600	370

¹ An operation is any place having one or more head of milk cows, excluding cows used to nurse calves, on hand at any time during the year.

² Average number of dairy farms licensed to sell milk, based on counts collected from State and other regulatory agencies.

³ Puerto Rico is not included in the U.S. total.

Reliability Statement

Survey Procedures: Primary data used to determine these estimates were obtained from a sample of producers. Individual States maintain a list of all known milk producers and information on the size of their herd. States use all known sources of producers to ensure that their lists are as complete as possible. Generally, all large producers and a sample of small producers are included in the survey. Questionnaires are mailed to producers near the end of the month to obtain data for the first day of the month. Additional reports are obtained by telephone, as needed, to supplement the mail response. Where feasible, States utilize state and federal administrative data, rather than conduct a monthly or quarterly survey, to estimate milk production. This eliminates duplication of data gathering by different government agencies. Indications of milk cow inventory are also obtained in the January and July Cattle Surveys.

Estimation Procedures: State offices prepare these estimates by using a combination of survey indications, historic trends, and any available administrative data. Individual State estimates are reviewed by the Agricultural Statistics Board for reasonableness.

Revision Policy: Milk production, rate per cow, and number of cows are subject to revision the following month for monthly States or the following quarter for the quarterly States. Normally, Federal Market Order sales are the main basis for revisions. However, data for all orders are not available in time for this revision. Estimates are again subject to revisions in February each year based on additional administrative data. In the event that additional changes are necessary, a third revision is possible in February the following year. Estimates are again reviewed after data from the five-year Census of Agriculture are available. No revisions are made after that date.

Reliability: Since all operations with dairy animals are not included in the sample, survey estimates are subject to sampling variability. Survey results are also subject to non-sampling errors such as omissions, duplications, and mistakes in reporting, recording, and processing the data. The effects of these errors cannot be measured directly. They are minimized through rigid quality controls in the data collection process and through a careful review of all reported data for consistency and reasonableness.

To assist users in evaluating the reliability of the estimates in this report, the "Root Mean Square Error" is shown for selected items on the next page. The "Root Mean Square Error" is a statistical measure based on past performance and is computed using the differences between first and final estimates. The "Root Mean Square Error" for milk cow inventory estimates over the past 10 October - December quarters is 0.4 percent. This means that chances are 2 out of 3 that the final October - December estimate will not be above or below the current estimate of 9.07 million head by more than 0.4 percent. Chances are 9 out of 10 that the difference will not exceed 0.7 percent.

Reliability of October-December Milk Estimates ¹

Item	Root Mean Square Error	90% Confidence Level		Difference Between First and Latest Estimates			Quarters	
				Average	Smallest	Largest	First Above Latest	First Below Latest
				<i>Million Pounds</i>	<i>Million Pounds</i>	<i>Million Pounds</i>	<i>Number</i>	<i>Number</i>
Milk Production	<i>Percent</i> 0.4	<i>Percent</i> 0.8	<i>Million Pounds</i> 349	<i>Million Pounds</i> 147	<i>Million Pounds</i> 1	<i>Million Pounds</i> 265	<i>Number</i> 6	<i>Number</i> 4
All Milk Cows	<i>Percent</i> 0.4	<i>Percent</i> 0.7	<i>1,000 Head</i> 63	<i>1,000 Head</i> 22	<i>1,000 Head</i> 1	<i>1,000 Head</i> 73	<i>Number</i> 7	<i>Number</i> 3

¹ Based on records for the past 10 October-December quarters.

ACCESS TO REPORTS!!

For your convenience, there are several ways to obtain NASS reports, data products, and services:

INTERNET ACCESS

All NASS reports are available free of charge on the worldwide Internet. For access, connect to the Internet and go to the NASS Home Page at: www.nass.usda.gov.

E-MAIL SUBSCRIPTION

All NASS reports are available by subscription free of charge direct to your e-mail address. Starting with the NASS Home Page at www.nass.usda.gov, under the right navigation, *Receive reports by Email*, click on **National** or **State**. Follow the instructions on the screen.

PRINTED REPORTS OR DATA PRODUCTS

CALL OUR TOLL-FREE ORDER DESK: 800-999-6779 (U.S. and Canada)
Other areas, please call 703-605-6220 FAX: 703-605-6900
(Visa, MasterCard, check, or money order acceptable for payment.)

ASSISTANCE

For **assistance** with general agricultural statistics or further information about NASS or its products or services, contact the **Agricultural Statistics Hotline** at **800-727-9540**, 7:30 a.m. to 4:00 p.m. ET, or e-mail: nass@nass.usda.gov.

The U.S. Department of Agriculture (USDA) prohibits discrimination in all its programs and activities on the basis of race, color, national origin, age, disability, and where applicable, sex, marital status, familial status, parental status, religion, sexual orientation, genetic information, political beliefs, reprisal, or because all or part of an individual's income is derived from any public assistance program. (Not all prohibited bases apply to all programs.) Persons with disabilities who require alternative means for communication of program information (Braille, large print, audiotape, etc.) should contact USDA's TARGET Center at (202) 720-2600 (voice and TDD).

To file a complaint of discrimination, write to USDA, Director, Office of Civil Rights, 1400 Independence Avenue, S.W., Washington, D.C. 20250-9410, or call (800) 795-3272 (voice) or (202) 720-6382 (TDD). USDA is an equal opportunity provider and employer.