



NASS

FACT FINDERS FOR AGRICULTURE
UNITED STATES DEPARTMENT OF AGRICULTURE

Washington, D.C.

Milk Production

Released March 17, 2006, by the National Agricultural Statistics Service (NASS), Agricultural Statistics Board, U.S. Department of Agriculture. For information on *Milk Production* call Charmaine Wilson at 202-690-2168, office hours 7:30 a.m. to 4:00 p.m. ET.

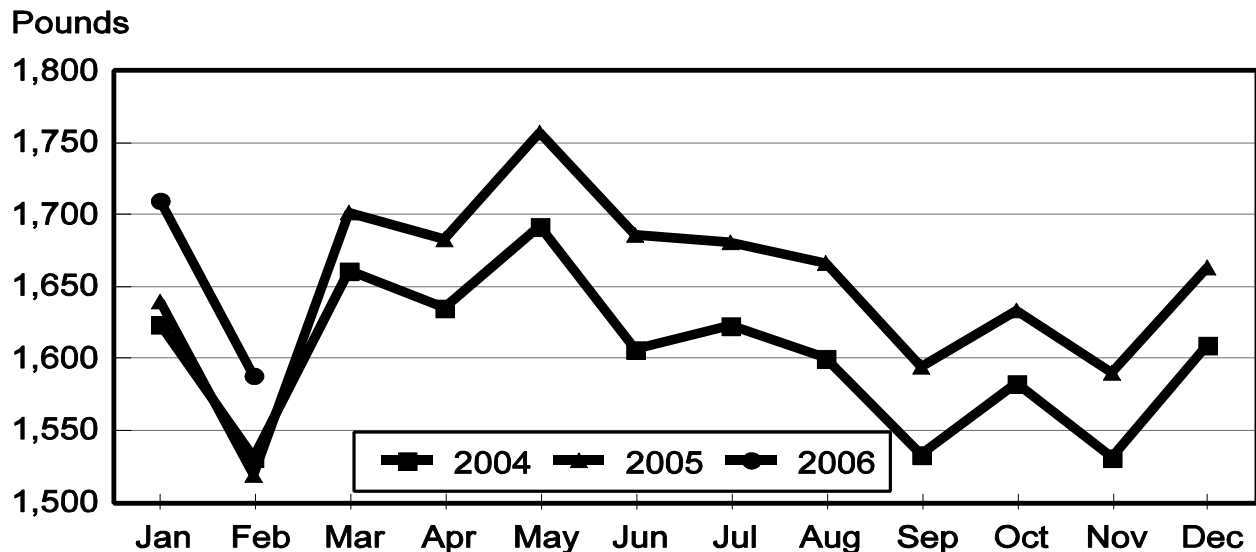
February Milk Production Up 5.9 Percent

Milk production in the 23 major States during February totaled 13.0 billion pounds, up 5.9 percent from February 2005. January production, at 14.0 billion pounds, was up 5.5 percent from January 2005.

Production per cow in the 23 major States averaged 1,588 pounds for February, 66 pounds above February 2005.

The number of milk cows on farms in the 23 major States was 8.21 million head, 121,000 head more than February 2005, and 10,000 head more than January 2006.

Monthly Milk per Cow 23 States



Milk Cows and Production: By Quarter, United States, 2005-2006 ¹

Quarter	Milk Cows ²		Milk Per Cow ³		Milk Production ³		
	2005	2006	2005	2006	2005	2006	Change From 2005
	<i>1,000 Head</i>	<i>1,000 Head</i>	<i>Pounds</i>	<i>Pounds</i>	<i>Million Pounds</i>	<i>Million Pounds</i>	<i>Percent</i>
Jan-Mar	9,002		4,816		43,350		
Apr-Jun	9,041		5,069		45,831		
Jul-Sep	9,060		4,871		44,134		
Oct-Dec	9,060		4,821		43,674		
Annual	9,041		19,576		176,989		

¹ May not add due to rounding.

² Includes dry cows, excludes heifers not yet fresh.

³ Excludes milk sucked by calves.

Milk Cows and Production: By Month, 23 Selected States, 2005-2006 ¹

Month	Milk Cows ²		Milk Per Cow ³		Milk Production ³		
	2005	2006	2005	2006	2005	2006	Change from 2005
	<i>1,000 Head</i>	<i>1,000 Head</i>	<i>Pounds</i>	<i>Pounds</i>	<i>Million Pounds</i>	<i>Million Pounds</i>	<i>Percent</i>
Jan	8,087	8,195	1,643	1,710	13,287	14,014	5.5
Feb	8,084	8,205	1,522	1,588	12,301	13,029	5.9
Mar	8,099		1,707		13,825		
Apr	8,117		1,690		13,717		
May	8,131		1,760		14,311		
Jun	8,138		1,690		13,755		
Jul	8,151		1,683		13,715		
Aug	8,162		1,671		13,640		
Sep	8,167		1,599		13,057		
Oct	8,168		1,637		13,373		
Nov	8,167		1,592		13,002		
Dec	8,179		1,663		13,599		
Annual	8,138		19,857		161,582		

¹ 2006 revised.

² Includes dry cows, excludes heifers not yet fresh.

³ Excludes milk sucked by calves.

Estimated Milk Cows and Production: By Month, United States, 2005-2006 ¹

Month	Milk Cows ²		Milk Per Cow ³		Milk Production ³		
	2005	2006	2005	2006	2005	2006	Change From 2005
	<i>1,000 Head</i>	<i>1,000 Head</i>	<i>Pounds</i>	<i>Pounds</i>	<i>Million Pounds</i>	<i>Million Pounds</i>	<i>Percent</i>
Jan	9,000	9,078	1,624	1,692	14,614	15,355	5.1
Feb	8,996	9,088	1,504	1,571	13,530	14,275	5.5
Mar	9,009		1,688		15,206		
Apr	9,030		1,666		15,047		
May	9,042		1,735		15,697		
Jun	9,050		1,668		15,087		
Jul	9,053		1,656		14,978		
Aug	9,060		1,643		14,896		
Sep	9,066		1,572		14,260		
Oct	9,060		1,613		14,611		
Nov	9,056		1,569		14,205		
Dec	9,063		1,639		14,858		
Annual	9,041		19,576		176,989		

¹ 2005 revised.

² Includes dry cows, excludes heifers not yet fresh.

³ Excludes milk sucked by calves.

Milk Cows and Production: By State, February 2005-2006

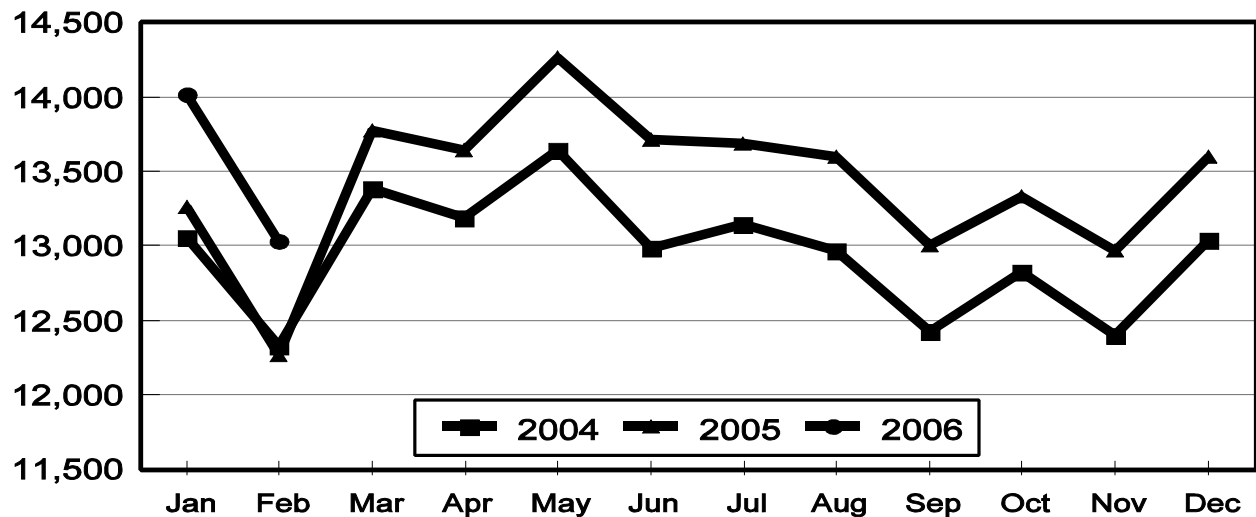
State	Milk Cows ¹		Milk Per Cow ²		Milk Production ²		
	2005	2006	2005	2006	2005	2006	Change From 2005
	<i>1,000 Head</i>	<i>1,000 Head</i>	<i>Pounds</i>	<i>Pounds</i>	<i>Million Pounds</i>	<i>Million Pounds</i>	<i>Percent</i>
AZ	164	166	1,840	1,930	302	320	6.0
CA	1,742	1,781	1,635	1,705	2,848	3,037	6.6
CO	100	106	1,720	1,795	172	190	10.5
FL	139	134	1,475	1,440	205	193	-5.9
ID	437	473	1,680	1,680	734	795	8.3
IL	105	104	1,500	1,540	158	160	1.3
IN	155	162	1,600	1,575	248	255	2.8
IA	190	200	1,615	1,630	307	326	6.2
KS	109	111	1,575	1,620	172	180	4.7
KY	110	101	1,000	1,050	110	106	-3.6
MI	308	314	1,660	1,725	511	542	6.1
MN	455	450	1,405	1,480	639	666	4.2
MO	117	114	1,230	1,320	144	150	4.2
NM	320	344	1,560	1,700	499	585	17.2
NY	650	649	1,415	1,485	920	964	4.8
OH	267	273	1,370	1,390	366	379	3.6
OR	120	121	1,460	1,430	175	173	-1.1
PA	560	555	1,420	1,550	795	860	8.2
TX	317	325	1,560	1,755	495	570	15.2
VT	143	143	1,430	1,450	204	207	1.5
VA	105	103	1,345	1,410	141	145	2.8
WA	237	236	1,805	1,790	428	422	-1.4
WI	1,234	1,240	1,400	1,455	1,728	1,804	4.4
23-State Total	8,084	8,205	1,522	1,588	12,301	13,029	5.9

¹ Includes dry cows, excludes heifers not yet fresh.

² Excludes milk sucked by calves.

Monthly Milk Production 23 States

Million Pounds



Milk Cows and Production: By State, January 2005-2006 ¹

State	Milk Cows ²		Milk per Cow ³		Milk Production ³		
	2005	2006	2005	2006	2005	2006	Change From 2005
	<i>1,000 Head</i>	<i>1,000 Head</i>	<i>Pounds</i>	<i>Pounds</i>	<i>Million Pounds</i>	<i>Million Pounds</i>	<i>Percent</i>
AZ	165	165	1,975	2,035	326	336	3.1
CA	1,739	1,776	1,770	1,825	3,078	3,241	5.3
CO	100	106	1,860	1,935	186	205	10.2
FL	138	134	1,520	1,485	210	199	-5.2
ID	436	473	1,830	1,830	798	866	8.5
IL	105	104	1,620	1,630	170	170	
IN	155	161	1,640	1,720	254	277	9.1
IA	190	200	1,750	1,765	333	353	6.0
KS	109	111	1,730	1,790	189	199	5.3
KY	110	101	1,090	1,150	120	116	-3.3
MI	306	313	1,785	1,875	546	587	7.5
MN	460	445	1,510	1,605	695	714	2.7
MO	118	114	1,330	1,440	157	164	4.5
NM	319	342	1,710	1,845	545	631	15.8
NY	650	651	1,535	1,595	998	1,038	4.0
OH	267	273	1,460	1,490	390	407	4.4
OR	120	121	1,570	1,530	188	185	-1.6
PA	564	557	1,540	1,650	869	919	5.8
TX	318	325	1,655	1,845	526	600	14.1
VT	143	143	1,560	1,580	223	226	1.3
VA	105	103	1,465	1,510	154	156	1.3
WA	235	237	1,960	1,940	461	460	-0.2
WI	1,235	1,240	1,515	1,585	1,871	1,965	5.0
23-State Total	8,087	8,195	1,643	1,710	13,287	14,014	5.5

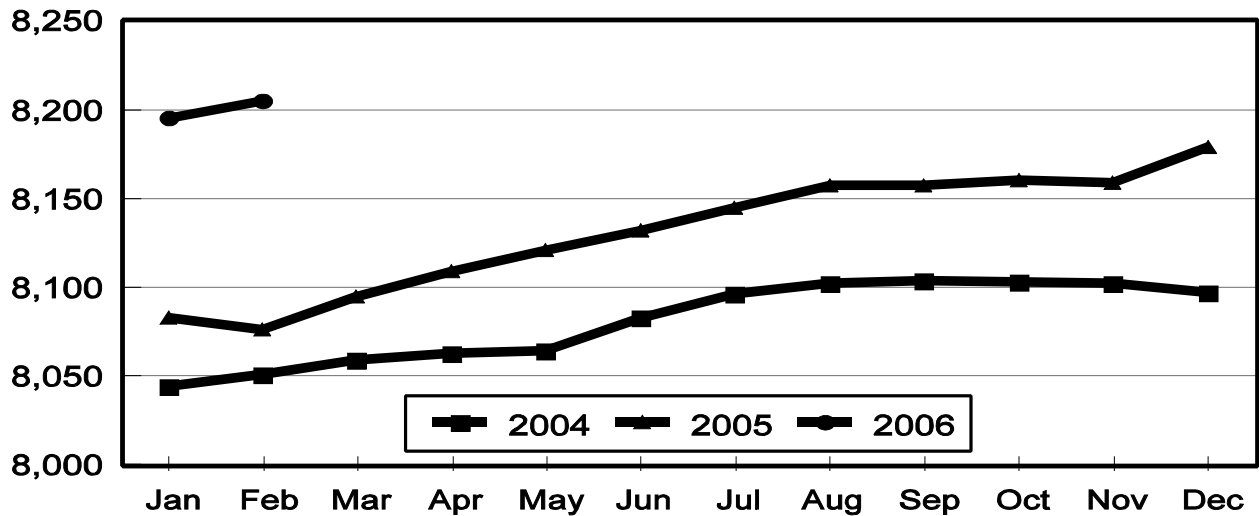
¹ 2005 and 2006 revised.

² Includes dry cows, excludes heifers not yet fresh.

³ Excludes milk sucked by calves.

Monthly Milk Cows 23 States

Thousand Head



Reliability Statement

Survey Procedures: Primary data used to determine these estimates were obtained from a sample of producers. Individual States maintain a list of all known milk producers and information on the size of their herd. States use all known sources of producers to ensure that their lists are as complete as possible. Generally, all large producers and a sample of small producers are included in the survey. Questionnaires are mailed to producers near the end of the month to obtain data for the first day of the month. Additional reports are obtained by telephone, as needed, to supplement the mail response. Where feasible, States utilize state and federal administrative data, rather than conduct a monthly or quarterly survey, to estimate milk production. This eliminates duplication of data gathering by different government agencies. Indications of milk cow inventory are also obtained in the January and July Cattle Surveys.

Estimation Procedures: State offices prepare these estimates by using a combination of survey indications, historic trends, and any available administrative data. Individual State estimates are reviewed by the Agricultural Statistics Board for reasonableness.

Revision Policy: Milk production, rate per cow, and number of cows are subject to revision the following month for monthly States or the following quarter for the quarterly States. Normally, Federal Market Order sales are the main basis for revisions. However, data for all orders are not available in time for this revision. Estimates are again subject to revisions in February each year based on additional administrative data. In the event that additional changes are necessary, a third revision is possible in February the following year. Estimates are again reviewed after data from the five-year Census of Agriculture are available. No revisions are made after that date.

Reliability: Since all operations with dairy animals are not included in the sample, survey estimates are subject to sampling variability. Survey results are also subject to non-sampling errors such as omissions, duplications, and mistakes in reporting, recording, and processing the data. The effects of these errors cannot be measured directly. They are minimized through rigid quality controls in the data collection process and through a careful review of all reported data for consistency and reasonableness.

To assist users in evaluating the reliability of the estimates in this report, the "Root Mean Square Error" is shown for selected items on the next page. The "Root Mean Square Error" is a statistical measure based on past performance and is computed using the differences between first and final estimates. The "Root Mean Square Error" for milk cow inventory estimates over the past 10 October - December quarters is 0.4 percent. This means that chances are 2 out of 3 that the final October - December estimate will not be above or below the current estimate of 9.06 million head by more than 0.4 percent. Chances are 9 out of 10 that the difference will not exceed 0.7 percent.

Reliability of October-December Milk Estimates ¹

Item	Root Mean Square Error	90% Confidence Level		Difference Between First and Latest Estimates			Quarters	
				Average	Smallest	Largest	First Above Latest	First Below Latest
				<i>Million Pounds</i>	<i>Million Pounds</i>	<i>Million Pounds</i>	<i>Number</i>	<i>Number</i>
Milk Production	<i>Percent</i> 0.4	<i>Percent</i> 0.8	<i>Million Pounds</i> 349	<i>Million Pounds</i> 147	<i>Million Pounds</i> 1	<i>Million Pounds</i> 265	<i>Number</i> 6	<i>Number</i> 4
All Milk Cows	<i>Percent</i> 0.4	<i>Percent</i> 0.7	<i>1,000 Head</i> 63	<i>1,000 Head</i> 22	<i>1,000 Head</i> 1	<i>1,000 Head</i> 73	<i>Number</i> 7	<i>Number</i> 3

¹ Based on records for the past 10 October-December quarters.

ACCESS TO REPORTS!!

For your convenience, there are several ways to obtain NASS reports, data products, and services:

INTERNET ACCESS

All NASS reports are available free of charge on the worldwide Internet. For access, connect to the Internet and go to the NASS Home Page at: www.nass.usda.gov.

E-MAIL SUBSCRIPTION

All NASS reports are available by subscription free of charge direct to your e-mail address. Starting with the NASS Home Page at www.nass.usda.gov, under the right navigation, *Receive reports by Email*, click on **National** or **State**. Follow the instructions on the screen.

PRINTED REPORTS OR DATA PRODUCTS

CALL OUR TOLL-FREE ORDER DESK: 800-999-6779 (U.S. and Canada)
Other areas, please call 703-605-6220 FAX: 703-605-6900
(Visa, MasterCard, check, or money order acceptable for payment.)

ASSISTANCE

For **assistance** with general agricultural statistics or further information about NASS or its products or services, contact the **Agricultural Statistics Hotline** at **800-727-9540**, 7:30 a.m. to 4:00 p.m. ET, or e-mail: nass@nass.usda.gov.

The U.S. Department of Agriculture (USDA) prohibits discrimination in all its programs and activities on the basis of race, color, national origin, age, disability, and where applicable, sex, marital status, familial status, parental status, religion, sexual orientation, genetic information, political beliefs, reprisal, or because all or part of an individual's income is derived from any public assistance program. (Not all prohibited bases apply to all programs.) Persons with disabilities who require alternative means for communication of program information (Braille, large print, audiotape, etc.) should contact USDA's TARGET Center at (202) 720-2600 (voice and TDD).

To file a complaint of discrimination, write to USDA, Director, Office of Civil Rights, 1400 Independence Avenue, S.W., Washington, D.C. 20250-9410, or call (800) 795-3272 (voice) or (202) 720-6382 (TDD). USDA is an equal opportunity provider and employer.