



NASS

FACT FINDERS FOR AGRICULTURE
UNITED STATES DEPARTMENT OF AGRICULTURE

Washington, D.C.

Milk Production

Released April 18, 2006, by the National Agricultural Statistics Service (NASS), Agricultural Statistics Board, U.S. Department of Agriculture. For information on *Milk Production* call Charmaine Wilson at 202-690-2168, office hours 7:30 a.m. to 4:00 p.m. ET.

March Milk Production Up 5.5 Percent

Milk production in the 23 major States during March totaled 14.6 billion pounds, up 5.5 percent from March 2005. February revised production, at 13.0 billion pounds, was up 5.9 percent from February 2005. The February revision represented a decrease of 7 million pounds from last month's preliminary production estimate.

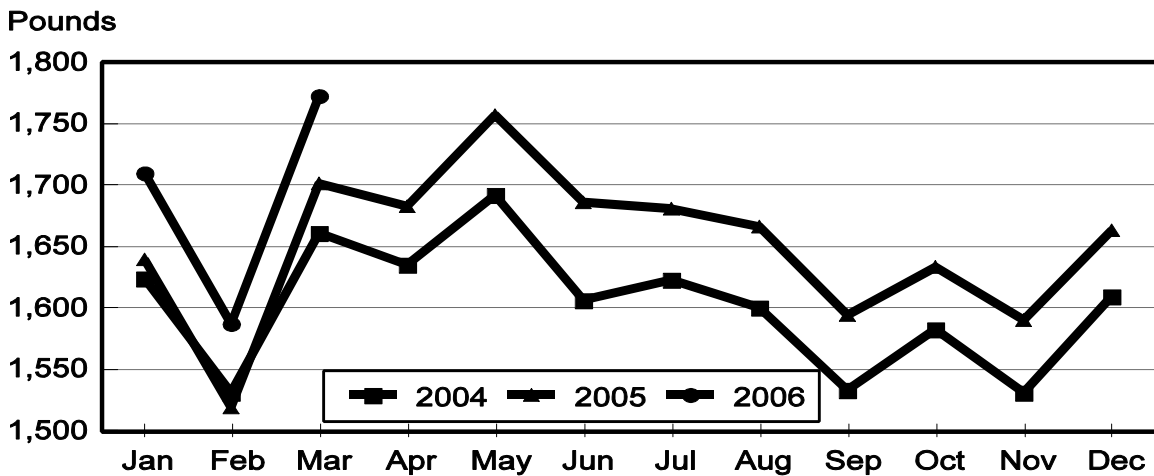
Production per cow in the 23 major States averaged 1,773 pounds for March, 66 pounds above March 2005.

The number of milk cows on farms in the 23 major States was 8.22 million head, 124,000 head more than March 2005, and 17,000 head more than February 2006.

January- March Milk Production Up 5.0 Percent

Milk production in the U.S. during the January - March quarter totaled 45.5 billion pounds, up 5.0 percent from the January - March quarter last year. The average number of milk cows in the U.S. during the quarter was 9.09 million head, 91,000 head more than the same period last year.

Monthly Milk per Cow 23 States



Milk Cows and Production: By Quarter, United States, 2005-2006 ¹

Quarter	Milk Cows ²		Milk Per Cow ³		Milk Production ³		
	2005	2006	2005	2006	2005	2006	Change From 2005
	<i>1,000 Head</i>	<i>1,000 Head</i>	<i>Pounds</i>	<i>Pounds</i>	<i>Million Pounds</i>	<i>Million Pounds</i>	<i>Percent</i>
Jan-Mar	9,002	9,093	4,816	5,006	43,350	45,521	5.0
Apr-Jun	9,041		5,069		45,831		
Jul-Sep	9,060		4,871		44,134		
Oct-Dec	9,060		4,821		43,674		
Annual	9,041		19,576		176,989		

¹ May not add due to rounding.

² Includes dry cows, excludes heifers not yet fresh.

³ Excludes milk sucked by calves.

Milk Cows and Production: By Month, 23 Selected States, 2005-2006 ¹

Month	Milk Cows ²		Milk Per Cow ³		Milk Production ³		
	2005	2006	2005	2006	2005	2006	Change from 2005
	<i>1,000 Head</i>	<i>1,000 Head</i>	<i>Pounds</i>	<i>Pounds</i>	<i>Million Pounds</i>	<i>Million Pounds</i>	<i>Percent</i>
Jan	8,087	8,195	1,643	1,710	13,287	14,014	5.5
Feb	8,084	8,206	1,522	1,587	12,301	13,022	5.9
Mar	8,099	8,223	1,707	1,773	13,825	14,579	5.5
Apr	8,117		1,690		13,717		
May	8,131		1,760		14,311		
Jun	8,138		1,690		13,755		
Jul	8,151		1,683		13,715		
Aug	8,162		1,671		13,640		
Sep	8,167		1,599		13,057		
Oct	8,168		1,637		13,373		
Nov	8,167		1,592		13,002		
Dec	8,179		1,663		13,599		
Annual	8,138		19,857		161,582		

¹ 2006 revised.

² Includes dry cows, excludes heifers not yet fresh.

³ Excludes milk sucked by calves.

Estimated Milk Cows and Production: By Month, United States, 2005-2006 ¹

Month	Milk Cows ²		Milk Per Cow ³		Milk Production ³		
	2005	2006	2005	2006	2005	2006	Change From 2005
	<i>1,000 Head</i>	<i>1,000 Head</i>	<i>Pounds</i>	<i>Pounds</i>	<i>Million Pounds</i>	<i>Million Pounds</i>	<i>Percent</i>
Jan	9,000	9,078	1,624	1,689	14,614	15,329	4.9
Feb	8,996	9,090	1,504	1,567	13,530	14,244	5.3
Mar	9,009	9,111	1,688	1,750	15,206	15,948	4.9
Apr	9,030		1,666		15,047		
May	9,042		1,735		15,697		
Jun	9,050		1,668		15,087		
Jul	9,053		1,656		14,978		
Aug	9,060		1,643		14,896		
Sep	9,066		1,572		14,260		
Oct	9,060		1,613		14,611		
Nov	9,056		1,569		14,205		
Dec	9,063		1,639		14,858		
Annual	9,041		19,576		176,989		

¹ 2005 revised.

² Includes dry cows, excludes heifers not yet fresh.

³ Excludes milk sucked by calves.

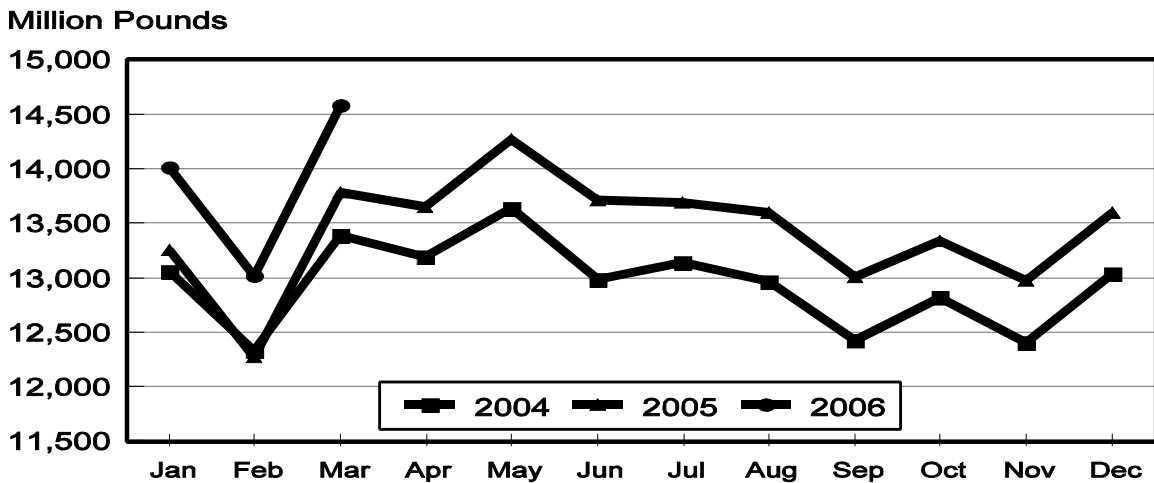
Milk Cows and Production: By State, March 2005-2006

State	Milk Cows ¹		Milk Per Cow ²		Milk Production ²		
	2005	2006	2005	2006	2005	2006	Change From 2005
	<i>1,000 Head</i>	<i>1,000 Head</i>	<i>Pounds</i>	<i>Pounds</i>	<i>Million Pounds</i>	<i>Million Pounds</i>	<i>Percent</i>
AZ	164	166	2,080	2,170	341	360	5.6
CA	1,744	1,785	1,850	1,920	3,226	3,427	6.2
CO	102	107	1,925	1,980	196	212	8.2
FL	139	133	1,640	1,600	228	213	-6.6
ID	441	475	1,880	1,880	829	893	7.7
IL	105	104	1,670	1,720	175	179	2.3
IN	156	163	1,700	1,775	265	289	9.1
IA	191	200	1,795	1,810	343	362	5.5
KS	110	111	1,810	1,840	199	204	2.5
KY	107	101	1,140	1,220	122	123	0.8
MI	309	315	1,825	1,900	564	599	6.2
MN	455	450	1,570	1,630	714	734	2.8
MO	119	115	1,400	1,500	167	173	3.6
NM	322	347	1,790	1,910	576	663	15.1
NY	648	649	1,570	1,630	1,017	1,058	4.0
OH	268	273	1,520	1,550	407	423	3.9
OR	121	121	1,640	1,610	198	195	-1.5
PA	560	555	1,600	1,700	896	944	5.4
TX	318	328	1,795	2,000	571	656	14.9
VT	143	143	1,595	1,610	228	230	0.9
VA	105	103	1,495	1,560	157	161	2.5
WA	239	238	2,020	1,980	483	471	-2.5
WI	1,233	1,241	1,560	1,620	1,923	2,010	4.5
23-State Total	8,099	8,223	1,707	1,773	13,825	14,579	5.5

¹ Includes dry cows, excludes heifers not yet fresh.

² Excludes milk sucked by calves.

Monthly Milk Production 23 States



Milk Cows and Production: By State, February 2005-2006 ¹

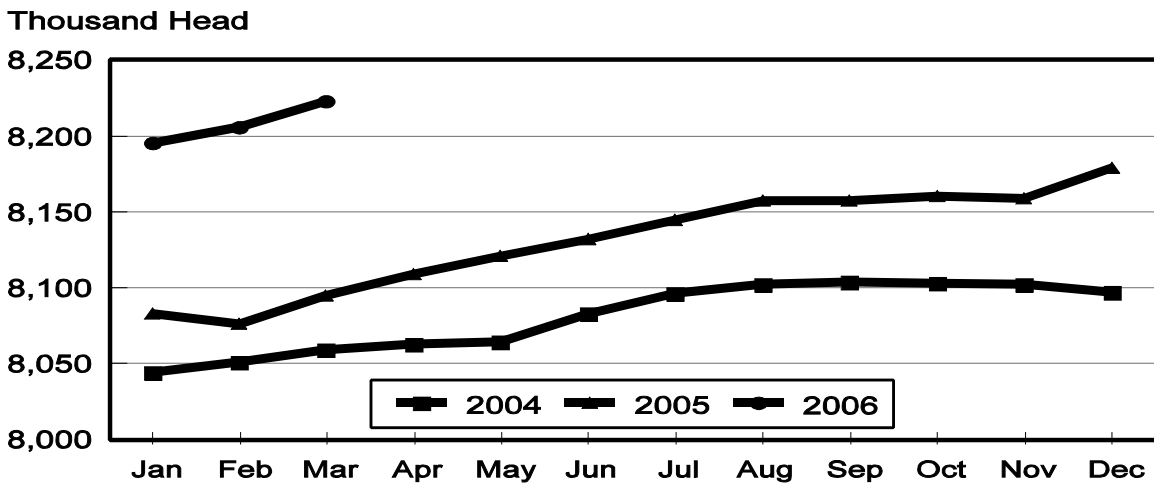
State	Milk Cows ²		Milk per Cow ³		Milk Production ³		
	2005	2006	2005	2006	2005	2006	Change From 2005
	<i>1,000 Head</i>	<i>1,000 Head</i>	<i>Pounds</i>	<i>Pounds</i>	<i>Million Pounds</i>	<i>Million Pounds</i>	<i>Percent</i>
AZ	164	166	1,840	1,930	302	320	6.0
CA	1,742	1,782	1,635	1,705	2,848	3,038	6.7
CO	100	106	1,720	1,795	172	190	10.5
FL	139	134	1,475	1,420	205	190	-7.3
ID	437	473	1,680	1,670	734	790	7.6
IL	105	104	1,500	1,540	158	160	1.3
IN	155	162	1,600	1,575	248	255	2.8
IA	190	200	1,615	1,630	307	326	6.2
KS	109	111	1,575	1,650	172	183	6.4
KY	110	101	1,000	1,080	110	109	-0.9
MI	308	314	1,660	1,725	511	542	6.1
MN	455	450	1,405	1,470	639	662	3.6
MO	117	114	1,230	1,320	144	150	4.2
NM	320	344	1,560	1,700	499	585	17.2
NY	650	649	1,415	1,485	920	964	4.8
OH	267	273	1,370	1,390	366	379	3.6
OR	120	121	1,460	1,410	175	171	-2.3
PA	560	555	1,420	1,550	795	860	8.2
TX	317	325	1,560	1,755	495	570	15.2
VT	143	143	1,430	1,450	204	207	1.5
VA	105	103	1,345	1,410	141	145	2.8
WA	237	236	1,805	1,790	428	422	-1.4
WI	1,234	1,240	1,400	1,455	1,728	1,804	4.4
23-State Total	8,084	8,206	1,522	1,587	12,301	13,022	5.9

¹ 2005 and 2006 revised.

² Includes dry cows, excludes heifers not yet fresh.

³ Excludes milk sucked by calves.

Monthly Milk Cows 23 States



**Milk Cows and Production: By State and United States,
Revised October-December, 2004-2005**

State	Oct-Dec Milk Cows ¹		Oct-Dec Milk Production ²		Change From 2004
	2004	2005	2004	2005	
	<i>1,000 Head</i>	<i>1,000 Head</i>	<i>Million Pounds</i>	<i>Million Pounds</i>	<i>Percent</i>
AL	17	15	56	50	-10.7
AK	1.2	0.9	3.4	2.7	-20.6
AZ	167	162	910	914	0.4
AR	23	21	72	67	-6.9
CA	1,741	1,769	9,130	9,383	2.8
CO	103	105	553	587	6.1
CT	20	20	95	92	-3.2
DE	7.5	7.1	31.5	29.8	-5.4
FL	137	135	531	503	-5.3
GA	84	79	334	327	-2.1
HI	5.8	5.1	17.4	15.5	-10.9
ID	434	471	2,310	2,586	11.9
IL	106	104	474	474	
IN	154	157	753	791	5.0
IA	190	199	947	1,006	6.2
KS	112	112	544	565	3.9
KY	109	102	340	325	-4.4
LA	36	32	108	93	-13.9
ME	33	32	148	142	-4.1
MD	73	71	285	281	-1.4
MA	17	16	73	69	-5.5
MI	306	312	1,567	1,672	6.7
MN	460	447	1,974	1,999	1.3
MS	26	24	86	82	-4.7
MO	120	114	445	449	0.9
MT	18	19	87	93	6.9
NE	61	60	262	267	1.9
NV	25	26	128	140	9.4
NH	16	16	74	74	
NJ	12	12	47	46	-2.1
NM	322	337	1,617	1,773	9.6
NY	651	649	2,843	2,974	4.6
NC	55	53	242	231	-4.5
ND	33	33	127	132	3.9
OH	266	271	1,131	1,158	2.4
OK	75	75	297	293	-1.3
OR	120	121	556	547	-1.6
PA	564	557	2,466	2,579	4.6
RI	1.1	1.0	4.5	4.4	-2.2
SC	18	17	69	69	
SD	80	81	338	358	5.9
TN	73	69	270	257	-4.8
TX	320	322	1,432	1,594	11.3
UT	89	85	397	413	4.0
VT	144	142	632	642	1.6
VA	104	105	428	438	2.3
WA	235	240	1,324	1,363	2.9
WV	13	13	48	49	2.1
WI	1,237	1,238	5,418	5,652	4.3
WY	4.4	6.2	16.3	22.9	40.5
US ³	9,019	9,060	42,041	43,674	3.9

¹ Includes dry cows, excludes heifers not yet fresh.

² Excludes milk sucked by calves.

³ May not add due to rounding.

**Milk Cows and Production: By State and United States,
Preliminary January-March, 2005-2006**

State	Jan-Mar Milk Cows ¹		Jan-Mar Milk Production ²		Change From 2005
	2005	2006	2005	2006	
	<i>1,000 Head</i>	<i>1,000 Head</i>	<i>Million Pounds</i>	<i>Million Pounds</i>	<i>Percent</i>
AL	16	14	64	61	-4.7
AK	1.2	0.8	3.6	2.4	-33.3
AZ	164	166	969	1,016	4.9
AR	23	21	77	71	-7.8
CA	1,742	1,781	9,152	9,706	6.1
CO	101	106	554	607	9.6
CT	20	20	99	97	-2.0
DE	7.5	7.2	34.0	33.1	-2.6
FL	139	134	643	602	-6.4
GA	83	78	379	379	
HI	5.7	4.5	17.7	15.2	-14.1
ID	438	474	2,361	2,549	8.0
IL	105	104	503	509	1.2
IN	155	162	767	821	7.0
IA	190	200	983	1,041	5.9
KS	109	111	560	586	4.6
KY	109	101	352	348	-1.1
LA	36	33	128	119	-7.0
ME	33	31	147	140	-4.8
MD	73	70	299	292	-2.3
MA	17	16	73	72	-1.4
MI	308	314	1,621	1,728	6.6
MN	457	448	2,048	2,110	3.0
MS	26	23	109	97	-11.0
MO	118	114	468	487	4.1
MT	18	19	89	93	4.5
NE	60	60	268	277	3.4
NV	25	27	128	140	9.4
NH	16	16	75	77	2.7
NJ	12	12	49	48	-2.0
NM	320	344	1,620	1,879	16.0
NY	649	650	2,935	3,060	4.3
NC	55	52	260	249	-4.2
ND	33	33	128	131	2.3
OH	267	273	1,163	1,209	4.0
OK	75	75	311	304	-2.3
OR	120	121	561	551	-1.8
PA	561	556	2,560	2,723	6.4
RI	1.0	1.0	4.6	4.6	
SC	18	17	81	76	-6.2
SD	81	81	350	364	4.0
TN	72	69	295	284	-3.7
TX	318	326	1,592	1,826	14.7
UT	88	85	404	404	
VT	143	143	655	663	1.2
VA	105	103	452	462	2.2
WA	237	237	1,372	1,353	-1.4
WV	13	13	48	50	4.2
WI	1,234	1,240	5,522	5,779	4.7
WY	4.4	6.8	15.8	25.8	63.3
US ³	9,002	9,093	43,350	45,521	5.0

¹ Includes dry cows, excludes heifers not yet fresh.

² Excludes milk sucked by calves.

³ May not add due to rounding.

Reliability Statement

Survey Procedures: Primary data used to determine these estimates were obtained from a sample of producers. Individual States maintain a list of all known milk producers and information on the size of their herd. States use all known sources of producers to ensure that their lists are as complete as possible. Generally, all large producers and a sample of small producers are included in the survey. Questionnaires are mailed to producers near the end of the month to obtain data for the first day of the month. Additional reports are obtained by telephone, as needed, to supplement the mail response. Where feasible, States utilize state and federal administrative data, rather than conduct a monthly or quarterly survey, to estimate milk production. This eliminates duplication of data gathering by different government agencies. Indications of milk cow inventory are also obtained in the January and July Cattle Surveys.

Estimation Procedures: State offices prepare these estimates by using a combination of survey indications, historic trends, and any available administrative data. Individual State estimates are reviewed by the Agricultural Statistics Board for reasonableness.

Revision Policy: Milk production, rate per cow, and number of cows are subject to revision the following month for monthly States or the following quarter for the quarterly States. Normally, Federal Market Order sales are the main basis for revisions. However, data for all orders are not available in time for this revision. Estimates are again subject to revisions in February each year based on additional administrative data. In the event that additional changes are necessary, a third revision is possible in February the following year. Estimates are again reviewed after data from the five-year Census of Agriculture are available. No revisions are made after that date.

Reliability: Since all operations with dairy animals are not included in the sample, survey estimates are subject to sampling variability. Survey results are also subject to non-sampling errors such as omissions, duplications, and mistakes in reporting, recording, and processing the data. The effects of these errors cannot be measured directly. They are minimized through rigid quality controls in the data collection process and through a careful review of all reported data for consistency and reasonableness.

To assist users in evaluating the reliability of the estimates in this report, the "Root Mean Square Error" is shown for selected items on the next page. The "Root Mean Square Error" is a statistical measure based on past performance and is computed using the differences between first and final estimates. The "Root Mean Square Error" for milk cow inventory estimates over the past 10 January - March quarters is 0.2 percent. This means that chances are 2 out of 3 that the final January - March estimate will not be above or below the current estimate of 9.09 million head by more than 0.2 percent. Chances are 9 out of 10 that the difference will not exceed 0.3 percent.

Reliability of January-March Milk Estimates ¹

Item	Root Mean Square Error	90% Confidence Level		Difference Between First and Latest Estimates			Quarters	
				Average	Smallest	Largest	First Above Latest	First Below Latest
				Million Pounds	Million Pounds	Million Pounds	Number	Number
Milk Production	<i>Percent</i> 0.4	<i>Percent</i> 0.7	<i>Million Pounds</i> 319	<i>Million Pounds</i> 135	<i>Million Pounds</i> 10	<i>Million Pounds</i> 375	<i>Number</i> 5	<i>Number</i> 5
All Milk Cows	<i>Percent</i> 0.2	<i>Percent</i> 0.3	<i>1,000 Head</i> 27	<i>1,000 Head</i> 12	<i>1,000 Head</i> 2	<i>1,000 Head</i> 35	<i>Number</i> 5	<i>Number</i> 5

¹ Based on records for the past 10 January-March quarters.

Listed below are the commodity specialists in the Livestock Branch of the National Agricultural Statistics Service to contact for additional information.

Information Contacts

Dan Kerestes, Chief Livestock Branch	(202) 720-3570
William Weaver, Head, Livestock Section	(202) 720-3570
Bruce Boess - Hogs and Pigs	(202) 720-3106
Shawn Clark - Dairy Products	(202) 690-3236
Scott Hollis - Sheep, Lambs, Wool and Mohair	(202) 720-4751
Mike Miller - Cattle	(202) 720-3040
Katy Paulsen - Livestock Slaughter	(515) 284-4340
Ann Summa - Milk and Milk Cows	(202) 720-3278
Charmaine Wilson - Dairy Products Prices	(202) 690-2168

ACCESS TO REPORTS!!

For your convenience, there are several ways to obtain NASS reports, data products, and services:

INTERNET ACCESS

All NASS reports are available free of charge on the worldwide Internet. For access, connect to the Internet and go to the NASS Home Page at: www.nass.usda.gov.

E-MAIL SUBSCRIPTION

All NASS reports are available by subscription free of charge direct to your e-mail address. Starting with the NASS Home Page at www.nass.usda.gov, under the right navigation, *Receive reports by Email*, click on **National** or **State**. Follow the instructions on the screen.

PRINTED REPORTS OR DATA PRODUCTS

CALL OUR TOLL-FREE ORDER DESK: 800-999-6779 (U.S. and Canada)
Other areas, please call 703-605-6220 FAX: 703-605-6900
(Visa, MasterCard, check, or money order acceptable for payment.)

ASSISTANCE

For **assistance** with general agricultural statistics or further information about NASS or its products or services, contact the **Agricultural Statistics Hotline** at **800-727-9540**, 7:30 a.m. to 4:00 p.m. ET, or e-mail: nass@nass.usda.gov.

The U.S. Department of Agriculture (USDA) prohibits discrimination in all its programs and activities on the basis of race, color, national origin, age, disability, and where applicable, sex, marital status, familial status, parental status, religion, sexual orientation, genetic information, political beliefs, reprisal, or because all or part of an individual's income is derived from any public assistance program. (Not all prohibited bases apply to all programs.) Persons with disabilities who require alternative means for communication of program information (Braille, large print, audiotape, etc.) should contact USDA's TARGET Center at (202) 720-2600 (voice and TDD).

To file a complaint of discrimination, write to USDA, Director, Office of Civil Rights, 1400 Independence Avenue, S.W., Washington, D.C. 20250-9410, or call (800) 795-3272 (voice) or (202) 720-6382 (TDD). USDA is an equal opportunity provider and employer.