



NASS

FACT FINDERS FOR AGRICULTURE
UNITED STATES DEPARTMENT OF AGRICULTURE

Washington, D.C.

Milk Production

Released June 16, 2006, by the National Agricultural Statistics Service (NASS), Agricultural Statistics Board, U.S. Department of Agriculture. For information on *Milk Production* call Charmaine Wilson at 202-690-2168, office hours 7:30 a.m. to 4:00 p.m. ET.

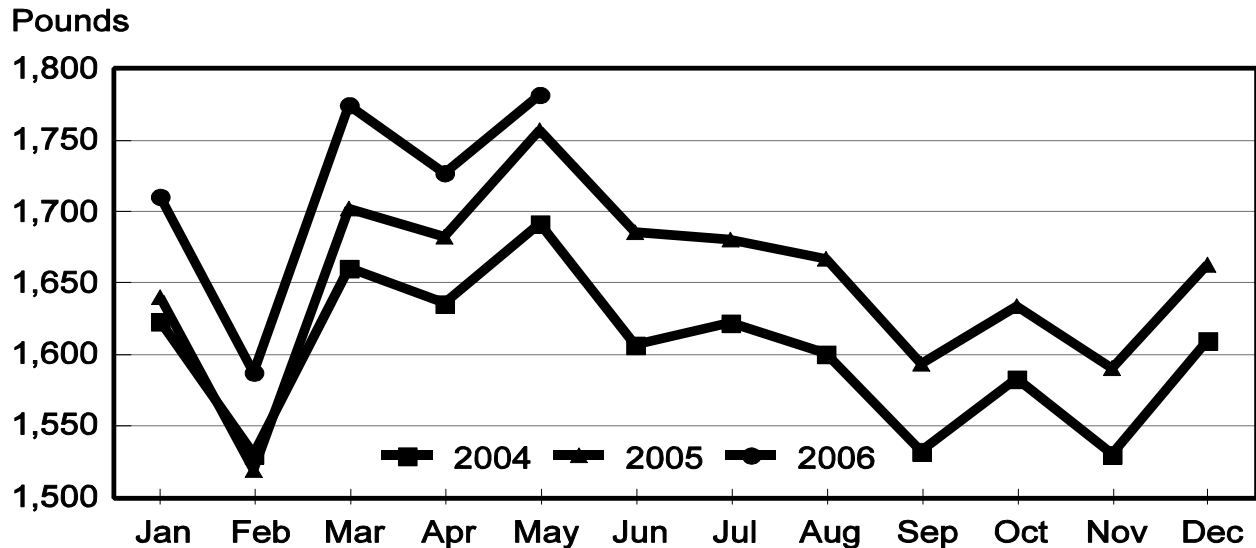
May Milk Production Up 2.8 Percent

Milk production in the 23 major States during May totaled 14.7 billion pounds, up 2.8 percent from May 2005. April revised production, at 14.2 billion pounds, was up 3.7 percent from April 2005. The April revision represented a decrease of 2 million pounds from last month's preliminary production estimate.

Production per cow in the 23 major States averaged 1,782 pounds for May, 22 pounds above May 2005.

The number of milk cows on farms in the 23 major States was 8.26 million head, 128,000 head more than May 2005, and 19,000 head more than April 2006.

Monthly Milk per Cow 23 States



Milk Cows and Production: By Quarter, United States, 2005-2006 ¹

Quarter	Milk Cows ²		Milk Per Cow ³		Milk Production ³		
	2005	2006	2005	2006	2005	2006	Change From 2005
	<i>1,000 Head</i>	<i>1,000 Head</i>	<i>Pounds</i>	<i>Pounds</i>	<i>Million Pounds</i>	<i>Million Pounds</i>	<i>Percent</i>
Jan-Mar	9,002	9,093	4,816	5,009	43,350	45,546	5.1
Apr-Jun	9,041		5,069		45,831		
Jul-Sep	9,060		4,871		44,134		
Oct-Dec	9,060		4,821		43,674		
Annual	9,041		19,576		176,989		

¹ May not add due to rounding.

² Includes dry cows, excludes heifers not yet fresh.

³ Excludes milk sucked by calves.

Milk Cows and Production: By Month, 23 Selected States, 2005-2006 ¹

Month	Milk Cows ²		Milk Per Cow ³		Milk Production ³		
	2005	2006	2005	2006	2005	2006	Change from 2005
	<i>1,000 Head</i>	<i>1,000 Head</i>	<i>Pounds</i>	<i>Pounds</i>	<i>Million Pounds</i>	<i>Million Pounds</i>	<i>Percent</i>
Jan	8,087	8,195	1,643	1,710	13,287	14,014	5.5
Feb	8,084	8,206	1,522	1,587	12,301	13,022	5.9
Mar	8,099	8,228	1,707	1,775	13,825	14,604	5.6
Apr	8,117	8,240	1,690	1,727	13,717	14,228	3.7
May	8,131	8,259	1,760	1,782	14,311	14,714	2.8
Jun	8,138		1,690		13,755		
Jul	8,151		1,683		13,715		
Aug	8,162		1,671		13,640		
Sep	8,167		1,599		13,057		
Oct	8,168		1,637		13,373		
Nov	8,167		1,592		13,002		
Dec	8,179		1,663		13,599		
Annual	8,138		19,857		161,582		

¹ 2006 revised.

² Includes dry cows, excludes heifers not yet fresh.

³ Excludes milk sucked by calves.

Estimated Milk Cows and Production: By Month, United States, 2005-2006 ¹

Month	Milk Cows ²		Milk Per Cow ³		Milk Production ³		
	2005	2006	2005	2006	2005	2006	Change From 2005
	<i>1,000 Head</i>	<i>1,000 Head</i>	<i>Pounds</i>	<i>Pounds</i>	<i>Million Pounds</i>	<i>Million Pounds</i>	<i>Percent</i>
Jan	9,000	9,078	1,624	1,689	14,614	15,333	4.9
Feb	8,996	9,090	1,504	1,567	13,530	14,244	5.3
Mar	9,009	9,111	1,688	1,753	15,206	15,972	5.0
Apr	9,030	9,125	1,666	1,702	15,047	15,531	3.2
May	9,042	9,145	1,735	1,757	15,697	16,068	2.4
Jun	9,050		1,668		15,087		
Jul	9,053		1,656		14,978		
Aug	9,060		1,643		14,896		
Sep	9,066		1,572		14,260		
Oct	9,060		1,613		14,611		
Nov	9,056		1,569		14,205		
Dec	9,063		1,639		14,858		
Annual	9,041		19,576		176,989		

¹ 2005 revised.

² Includes dry cows, excludes heifers not yet fresh.

³ Excludes milk sucked by calves.

Milk Cows and Production: By State, May 2005-2006

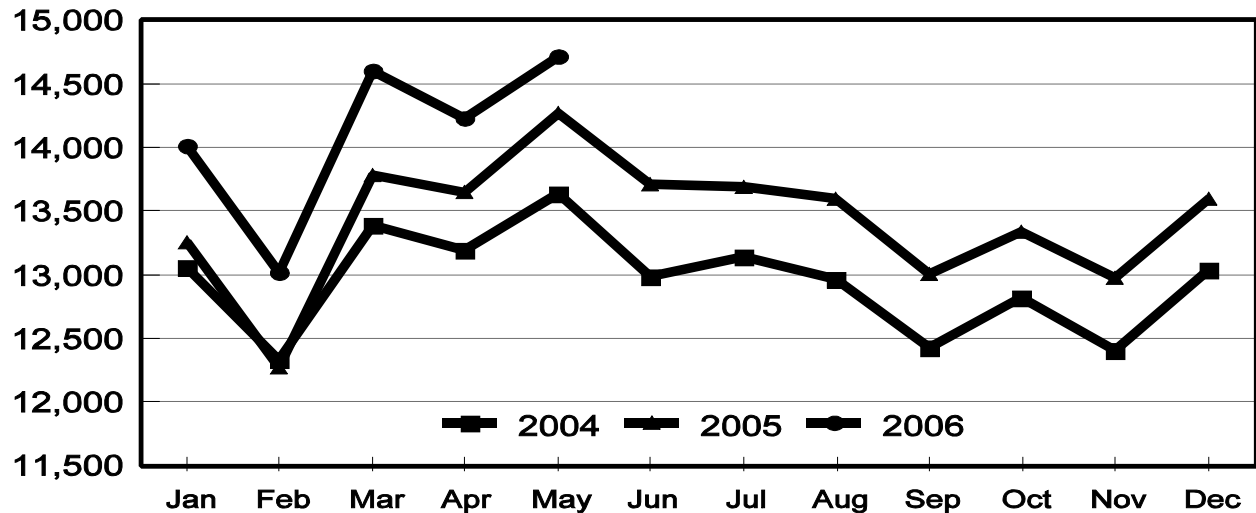
State	Milk Cows ¹		Milk Per Cow ²		Milk Production ²		
	2005	2006	2005	2006	2005	2006	Change From 2005
	<i>1,000 Head</i>	<i>1,000 Head</i>	<i>Pounds</i>	<i>Pounds</i>	<i>Million Pounds</i>	<i>Million Pounds</i>	<i>Percent</i>
AZ	163	173	2,085	2,145	340	371	9.1
CA	1,751	1,785	1,880	1,890	3,292	3,374	2.5
CO	104	109	1,950	2,000	203	218	7.4
FL	138	133	1,580	1,600	218	213	-2.3
ID	445	485	1,930	1,930	859	936	9.0
IL	104	103	1,660	1,690	173	174	0.6
IN	157	166	1,800	1,750	283	291	2.8
IA	193	200	1,845	1,790	356	358	0.6
KS	112	113	1,815	1,870	203	211	3.9
KY	107	99	1,195	1,260	128	125	-2.3
MI	312	319	1,915	1,910	597	609	2.0
MN	455	450	1,610	1,635	733	736	0.4
MO	119	116	1,490	1,470	177	171	-3.4
NM	323	356	1,880	1,980	607	705	16.1
NY	646	648	1,665	1,660	1,076	1,076	
OH	270	273	1,595	1,600	431	437	1.4
OR	121	121	1,660	1,550	201	188	-6.5
PA	565	556	1,675	1,700	946	945	-0.1
TX	320	330	1,830	1,970	586	650	10.9
VT	144	142	1,650	1,630	238	231	-2.9
VA	105	103	1,535	1,545	161	159	-1.2
WA	243	237	2,025	2,025	492	480	-2.4
WI	1,234	1,242	1,630	1,655	2,011	2,056	2.2
23-State Total	8,131	8,259	1,760	1,782	14,311	14,714	2.8

¹ Includes dry cows, excludes heifers not yet fresh.

² Excludes milk sucked by calves.

Monthly Milk Production 23 States

Million Pounds



Milk Cows and Production: By State, April 2005-2006 ¹

State	Milk Cows ²		Milk per Cow ³		Milk Production ³		
	2005	2006	2005	2006	2005	2006	Change From 2005
	<i>1,000 Head</i>	<i>1,000 Head</i>	<i>Pounds</i>	<i>Pounds</i>	<i>Million Pounds</i>	<i>Million Pounds</i>	<i>Percent</i>
AZ	164	172	2,060	2,145	338	369	9.2
CA	1,747	1,785	1,825	1,855	3,188	3,311	3.9
CO	103	108	1,865	1,910	192	206	7.3
FL	138	133	1,570	1,590	217	211	-2.8
ID	443	478	1,850	1,850	820	884	7.8
IL	105	103	1,605	1,650	169	170	0.6
IN	157	165	1,780	1,715	279	283	1.4
IA	192	200	1,775	1,765	341	353	3.5
KS	111	112	1,755	1,810	195	203	4.1
KY	107	99	1,150	1,230	123	122	-0.8
MI	311	317	1,830	1,855	569	588	3.3
MN	455	450	1,540	1,575	701	709	1.1
MO	119	116	1,430	1,500	170	174	2.4
NM	323	350	1,780	1,875	575	656	14.1
NY	646	649	1,565	1,590	1,011	1,032	2.1
OH	269	273	1,520	1,530	409	418	2.2
OR	121	121	1,610	1,490	195	180	-7.7
PA	563	557	1,600	1,650	901	919	2.0
TX	319	328	1,780	1,935	568	635	11.8
VT	144	143	1,570	1,560	226	223	-1.3
VA	105	103	1,485	1,540	156	159	1.9
WA	241	237	1,965	1,950	474	462	-2.5
WI	1,234	1,241	1,540	1,580	1,900	1,961	3.2
23-State Total	8,117	8,240	1,690	1,727	13,717	14,228	3.7

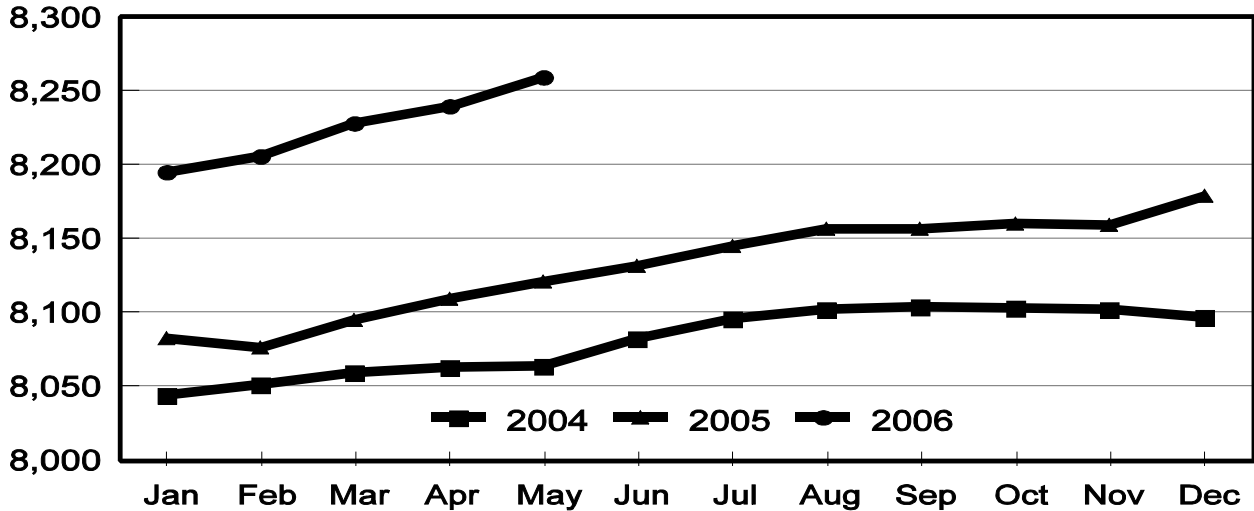
¹ 2005 and 2006 revised.

² Includes dry cows, excludes heifers not yet fresh.

³ Excludes milk sucked by calves.

Monthly Milk Cows 23 States

Thousand Head



Reliability Statement

Survey Procedures: Primary data used to determine these estimates were obtained from a sample of producers. Individual States maintain a list of all known milk producers and information on the size of their herd. States use all known sources of producers to ensure that their lists are as complete as possible. Generally, all large producers and a sample of small producers are included in the survey. Questionnaires are mailed to producers near the end of the month to obtain data for the first day of the month. Additional reports are obtained by telephone, as needed, to supplement the mail response. Where feasible, States utilize state and federal administrative data, rather than conduct a monthly or quarterly survey, to estimate milk production. This eliminates duplication of data gathering by different government agencies. Indications of milk cow inventory are also obtained in the January and July Cattle Surveys.

Estimation Procedures: State offices prepare these estimates by using a combination of survey indications, historic trends, and any available administrative data. Individual State estimates are reviewed by the Agricultural Statistics Board for reasonableness.

Revision Policy: Milk production, rate per cow, and number of cows are subject to revision the following month for monthly States or the following quarter for the quarterly States. Normally, Federal Market Order sales are the main basis for revisions. However, data for all orders are not available in time for this revision. Estimates are again subject to revisions in February each year based on additional administrative data. In the event that additional changes are necessary, a third revision is possible in February the following year. Estimates are again reviewed after data from the five-year Census of Agriculture are available. No revisions are made after that date.

Reliability: Since all operations with dairy animals are not included in the sample, survey estimates are subject to sampling variability. Survey results are also subject to non-sampling errors such as omissions, duplications, and mistakes in reporting, recording, and processing the data. The effects of these errors cannot be measured directly. They are minimized through rigid quality controls in the data collection process and through a careful review of all reported data for consistency and reasonableness.

To assist users in evaluating the reliability of the estimates in this report, the "Root Mean Square Error" is shown for selected items on the next page. The "Root Mean Square Error" is a statistical measure based on past performance and is computed using the differences between first and final estimates. The "Root Mean Square Error" for milk cow inventory estimates over the past 10 January - March quarters is 0.2 percent. This means that chances are 2 out of 3 that the final January - March estimate will not be above or below the current estimate of 9.09 million head by more than 0.2 percent. Chances are 9 out of 10 that the difference will not exceed 0.3 percent.

Reliability of January-March Milk Estimates ¹

Item	Root Mean Square Error	90% Confidence Level		Difference Between First and Latest Estimates			Quarters	
				Average	Smallest	Largest	First Above Latest	First Below Latest
				<i>Million Pounds</i>	<i>Million Pounds</i>	<i>Million Pounds</i>	<i>Number</i>	<i>Number</i>
Milk Production	<i>Percent</i> 0.4	<i>Percent</i> 0.7	<i>Million Pounds</i> 319	<i>Million Pounds</i> 135	<i>Million Pounds</i> 10	<i>Million Pounds</i> 375	<i>Number</i> 5	<i>Number</i> 5
All Milk Cows	<i>Percent</i> 0.2	<i>Percent</i> 0.3	<i>1,000 Head</i> 27	<i>1,000 Head</i> 12	<i>1,000 Head</i> 2	<i>1,000 Head</i> 35	<i>Number</i> 5	<i>Number</i> 5

¹ Based on records for the past 10 January-March quarters.

ACCESS TO REPORTS!!

For your convenience, there are several ways to obtain NASS reports, data products, and services:

INTERNET ACCESS

All NASS reports are available free of charge on the worldwide Internet. For access, connect to the Internet and go to the NASS Home Page at: www.nass.usda.gov.

E-MAIL SUBSCRIPTION

All NASS reports are available by subscription free of charge direct to your e-mail address. Starting with the NASS Home Page at www.nass.usda.gov, under the right navigation, *Receive reports by Email*, click on **National** or **State**. Follow the instructions on the screen.

PRINTED REPORTS OR DATA PRODUCTS

CALL OUR TOLL-FREE ORDER DESK: 800-999-6779 (U.S. and Canada)
Other areas, please call 703-605-6220 FAX: 703-605-6900
(Visa, MasterCard, check, or money order acceptable for payment.)

ASSISTANCE

For **assistance** with general agricultural statistics or further information about NASS or its products or services, contact the **Agricultural Statistics Hotline** at **800-727-9540**, 7:30 a.m. to 4:00 p.m. ET, or e-mail: nass@nass.usda.gov.

The U.S. Department of Agriculture (USDA) prohibits discrimination in all its programs and activities on the basis of race, color, national origin, age, disability, and where applicable, sex, marital status, familial status, parental status, religion, sexual orientation, genetic information, political beliefs, reprisal, or because all or part of an individual's income is derived from any public assistance program. (Not all prohibited bases apply to all programs.) Persons with disabilities who require alternative means for communication of program information (Braille, large print, audiotape, etc.) should contact USDA's TARGET Center at (202) 720-2600 (voice and TDD).

To file a complaint of discrimination, write to USDA, Director, Office of Civil Rights, 1400 Independence Avenue, S.W., Washington, D.C. 20250-9410, or call (800) 795-3272 (voice) or (202) 720-6382 (TDD). USDA is an equal opportunity provider and employer.