



NASS

FACT FINDERS FOR AGRICULTURE
UNITED STATES DEPARTMENT OF AGRICULTURE

Washington, D.C.

Milk Production

Released July 18, 2006, by the National Agricultural Statistics Service (NASS), Agricultural Statistics Board, U.S. Department of Agriculture. For information on *Milk Production* call Jason Hardegree at 202-720-3278, office hours 7:30 a.m. to 4:00 p.m. ET.

June Milk Production Up 1.9 Percent

Milk production in the 23 major States during June totaled 14 billion pounds, up 1.9 percent from June 2005. May revised production, at 14.7 billion pounds, was up 2.7 percent from May 2005. The May revision represented a decrease of 14 million pounds or 0.1 percent from last month's preliminary production estimate.

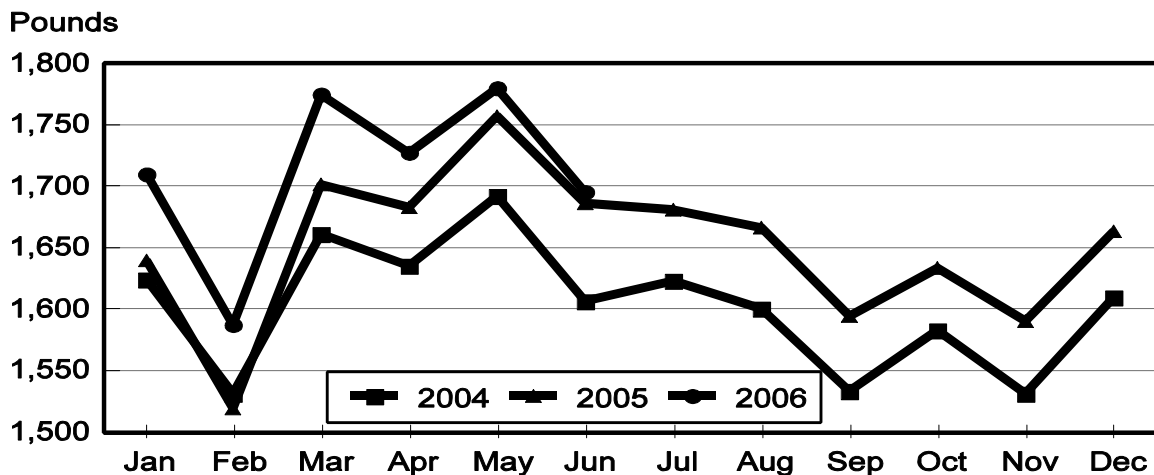
Production per cow in the 23 major States averaged 1,695 pounds for June, 5 pounds above June 2005.

The number of milk cows on farms in the 23 major States was 8.27 million head, 128,000 head more than June 2005, and 9,000 head more than May 2006.

April - June Milk Production Up 2.3 Percent

Milk production in the U.S. during the April - June quarter totaled 46.9 billion pounds, up 2.3 percent from the April - June quarter last year. The average number of milk cows in the U.S. during the quarter was 9.13 million head, 93,000 head more than the same period last year.

Monthly Milk per Cow 23 States



Milk Cows and Production: By Quarter, United States, 2005-2006 ¹

| Quarter | Milk Cows ² | | Milk Per Cow ³ | | Milk Production ³ | | |
|---------|------------------------|-------------------|---------------------------|---------------|------------------------------|-----------------------|------------------|
| | 2005 | 2006 | 2005 | 2006 | 2005 | 2006 | Change From 2005 |
| | <i>1,000 Head</i> | <i>1,000 Head</i> | <i>Pounds</i> | <i>Pounds</i> | <i>Million Pounds</i> | <i>Million Pounds</i> | <i>Percent</i> |
| Jan-Mar | 9,002 | 9,094 | 4,816 | 5,009 | 43,350 | 45,553 | 5.1 |
| Apr-Jun | 9,041 | 9,134 | 5,069 | 5,134 | 45,831 | 46,896 | 2.3 |
| Jul-Sep | 9,060 | | 4,871 | | 44,134 | | |
| Oct-Dec | 9,060 | | 4,821 | | 43,674 | | |
| Annual | 9,041 | | 19,576 | | 176,989 | | |

¹ May not add due to rounding.

² Includes dry cows, excludes heifers not yet fresh.

³ Excludes milk sucked by calves.

Milk Cows and Production: By Month, 23 Selected States, 2005-2006 ¹

| Month | Milk Cows ² | | Milk Per Cow ³ | | Milk Production ³ | | |
|--------|------------------------|-------------------|---------------------------|---------------|------------------------------|-----------------------|------------------|
| | 2005 | 2006 | 2005 | 2006 | 2005 | 2006 | Change from 2005 |
| | <i>1,000 Head</i> | <i>1,000 Head</i> | <i>Pounds</i> | <i>Pounds</i> | <i>Million Pounds</i> | <i>Million Pounds</i> | <i>Percent</i> |
| Jan | 8,087 | 8,195 | 1,643 | 1,710 | 13,287 | 14,014 | 5.5 |
| Feb | 8,084 | 8,206 | 1,522 | 1,587 | 12,301 | 13,022 | 5.9 |
| Mar | 8,099 | 8,228 | 1,707 | 1,775 | 13,825 | 14,604 | 5.6 |
| Apr | 8,117 | 8,240 | 1,690 | 1,727 | 13,717 | 14,228 | 3.7 |
| May | 8,131 | 8,257 | 1,760 | 1,780 | 14,311 | 14,700 | 2.7 |
| Jun | 8,138 | 8,266 | 1,690 | 1,695 | 13,755 | 14,011 | 1.9 |
| Jul | 8,151 | | 1,683 | | 13,715 | | |
| Aug | 8,162 | | 1,671 | | 13,640 | | |
| Sep | 8,167 | | 1,599 | | 13,057 | | |
| Oct | 8,168 | | 1,637 | | 13,373 | | |
| Nov | 8,167 | | 1,592 | | 13,002 | | |
| Dec | 8,179 | | 1,663 | | 13,599 | | |
| Annual | 8,138 | | 19,857 | | 161,582 | | |

¹ 2006 revised.

² Includes dry cows, excludes heifers not yet fresh.

³ Excludes milk sucked by calves.

Estimated Milk Cows and Production: By Month, United States, 2005-2006 ¹

| Month | Milk Cows ² | | Milk Per Cow ³ | | Milk Production ³ | | |
|--------|------------------------|-------------------|---------------------------|---------------|------------------------------|-----------------------|------------------|
| | 2005 | 2006 | 2005 | 2006 | 2005 | 2006 | Change From 2005 |
| | <i>1,000 Head</i> | <i>1,000 Head</i> | <i>Pounds</i> | <i>Pounds</i> | <i>Million Pounds</i> | <i>Million Pounds</i> | <i>Percent</i> |
| Jan | 9,000 | 9,079 | 1,624 | 1,689 | 14,614 | 15,333 | 4.9 |
| Feb | 8,996 | 9,091 | 1,504 | 1,567 | 13,530 | 14,248 | 5.3 |
| Mar | 9,009 | 9,113 | 1,688 | 1,753 | 15,206 | 15,972 | 5.0 |
| Apr | 9,030 | 9,118 | 1,666 | 1,704 | 15,047 | 15,538 | 3.3 |
| May | 9,042 | 9,137 | 1,735 | 1,757 | 15,697 | 16,055 | 2.3 |
| Jun | 9,050 | 9,147 | 1,668 | 1,673 | 15,087 | 15,303 | 1.4 |
| Jul | 9,053 | | 1,656 | | 14,978 | | |
| Aug | 9,060 | | 1,643 | | 14,896 | | |
| Sep | 9,066 | | 1,572 | | 14,260 | | |
| Oct | 9,060 | | 1,613 | | 14,611 | | |
| Nov | 9,056 | | 1,569 | | 14,209 | | |
| Dec | 9,063 | | 1,639 | | 14,854 | | |
| Annual | 9,041 | | 19,576 | | 176,989 | | |

¹ 2005 revised.

² Includes dry cows, excludes heifers not yet fresh.

³ Excludes milk sucked by calves.

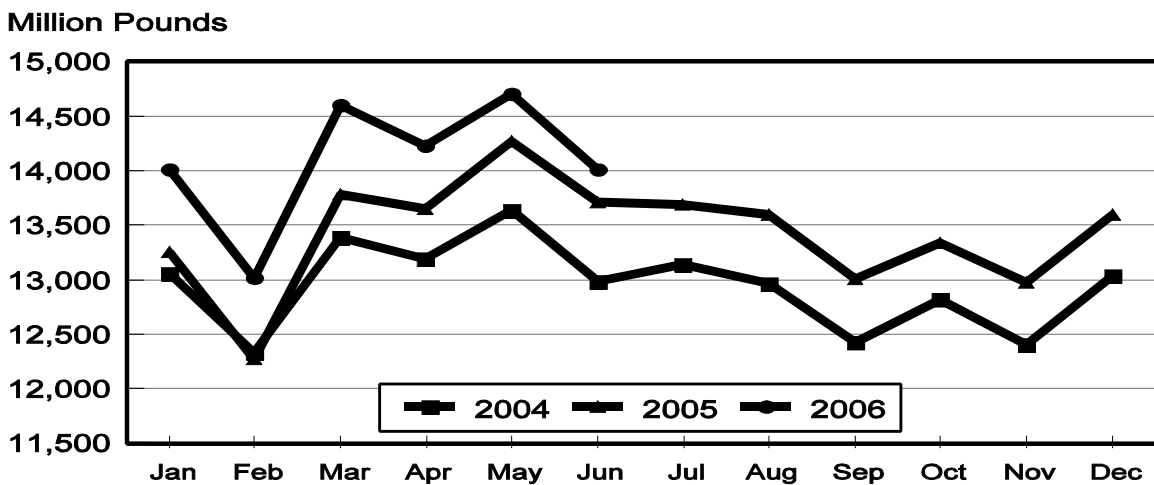
Milk Cows and Production: By State, June 2005-2006

| State | Milk Cows ¹ | | Milk Per Cow ² | | Milk Production ² | | |
|----------------|------------------------|-------------------|---------------------------|---------------|------------------------------|-----------------------|------------------|
| | 2005 | 2006 | 2005 | 2006 | 2005 | 2006 | Change From 2005 |
| | <i>1,000 Head</i> | <i>1,000 Head</i> | <i>Pounds</i> | <i>Pounds</i> | <i>Million Pounds</i> | <i>Million Pounds</i> | <i>Percent</i> |
| AZ | 162 | 172 | 1,950 | 1,965 | 316 | 338 | 7.0 |
| CA | 1,753 | 1,783 | 1,815 | 1,795 | 3,182 | 3,200 | 0.6 |
| CO | 105 | 111 | 1,905 | 1,965 | 200 | 218 | 9.0 |
| FL | 137 | 132 | 1,440 | 1,380 | 197 | 182 | -7.6 |
| ID | 451 | 486 | 1,900 | 1,900 | 857 | 923 | 7.7 |
| IL | 104 | 103 | 1,600 | 1,590 | 166 | 164 | -1.2 |
| IN | 156 | 166 | 1,715 | 1,670 | 268 | 277 | 3.4 |
| IA | 193 | 200 | 1,725 | 1,685 | 333 | 337 | 1.2 |
| KS | 112 | 113 | 1,730 | 1,750 | 194 | 198 | 2.1 |
| KY | 107 | 98 | 1,105 | 1,120 | 118 | 110 | -6.8 |
| MI | 313 | 320 | 1,835 | 1,840 | 574 | 589 | 2.6 |
| MN | 455 | 450 | 1,540 | 1,550 | 701 | 698 | -0.4 |
| MO | 118 | 116 | 1,380 | 1,320 | 163 | 153 | -6.1 |
| NM | 325 | 360 | 1,840 | 1,875 | 598 | 675 | 12.9 |
| NY | 647 | 649 | 1,590 | 1,575 | 1,029 | 1,022 | -0.7 |
| OH | 270 | 274 | 1,500 | 1,530 | 405 | 419 | 3.5 |
| OR | 121 | 121 | 1,610 | 1,550 | 195 | 188 | -3.6 |
| PA | 563 | 555 | 1,595 | 1,620 | 898 | 899 | 0.1 |
| TX | 320 | 333 | 1,720 | 1,820 | 550 | 606 | 10.2 |
| VT | 143 | 141 | 1,565 | 1,545 | 224 | 218 | -2.7 |
| VA | 105 | 103 | 1,420 | 1,450 | 149 | 149 | |
| WA | 243 | 237 | 1,950 | 1,960 | 474 | 465 | -1.9 |
| WI | 1,235 | 1,243 | 1,590 | 1,595 | 1,964 | 1,983 | 1.0 |
| 23-State Total | 8,138 | 8,266 | 1,690 | 1,695 | 13,755 | 14,011 | 1.9 |

¹ Includes dry cows, excludes heifers not yet fresh.

² Excludes milk sucked by calves.

Monthly Milk Production 23 States



Milk Cows and Production: By State, May 2005-2006 ¹

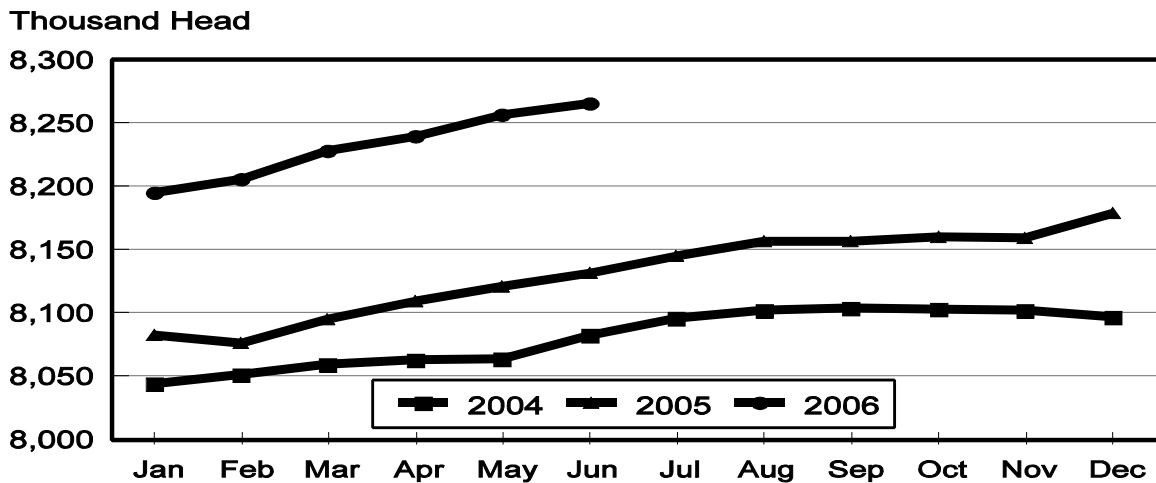
| State | Milk Cows ² | | Milk per Cow ³ | | Milk Production ³ | | |
|----------------|------------------------|-------------------|---------------------------|---------------|------------------------------|-----------------------|------------------|
| | 2005 | 2006 | 2005 | 2006 | 2005 | 2006 | Change From 2005 |
| | <i>1,000 Head</i> | <i>1,000 Head</i> | <i>Pounds</i> | <i>Pounds</i> | <i>Million Pounds</i> | <i>Million Pounds</i> | <i>Percent</i> |
| AZ | 163 | 173 | 2,085 | 2,145 | 340 | 371 | 9.1 |
| CA | 1,751 | 1,785 | 1,880 | 1,895 | 3,292 | 3,383 | 2.8 |
| CO | 104 | 109 | 1,950 | 2,000 | 203 | 218 | 7.4 |
| FL | 138 | 133 | 1,580 | 1,520 | 218 | 202 | -7.3 |
| ID | 445 | 484 | 1,930 | 1,940 | 859 | 939 | 9.3 |
| IL | 104 | 103 | 1,660 | 1,690 | 173 | 174 | 0.6 |
| IN | 157 | 166 | 1,800 | 1,750 | 283 | 291 | 2.8 |
| IA | 193 | 200 | 1,845 | 1,790 | 356 | 358 | 0.6 |
| KS | 112 | 113 | 1,815 | 1,870 | 203 | 211 | 3.9 |
| KY | 107 | 98 | 1,195 | 1,220 | 128 | 120 | -6.3 |
| MI | 312 | 319 | 1,915 | 1,910 | 597 | 609 | 2.0 |
| MN | 455 | 450 | 1,610 | 1,625 | 733 | 731 | -0.3 |
| MO | 119 | 116 | 1,490 | 1,470 | 177 | 171 | -3.4 |
| NM | 323 | 356 | 1,880 | 1,980 | 607 | 705 | 16.1 |
| NY | 646 | 648 | 1,665 | 1,660 | 1,076 | 1,076 | |
| OH | 270 | 273 | 1,595 | 1,600 | 431 | 437 | 1.4 |
| OR | 121 | 121 | 1,660 | 1,600 | 201 | 194 | -3.5 |
| PA | 565 | 556 | 1,675 | 1,700 | 946 | 945 | -0.1 |
| TX | 320 | 330 | 1,830 | 1,970 | 586 | 650 | 10.9 |
| VT | 144 | 142 | 1,650 | 1,630 | 238 | 231 | -2.9 |
| VA | 105 | 103 | 1,535 | 1,560 | 161 | 161 | |
| WA | 243 | 237 | 2,025 | 2,025 | 492 | 480 | -2.4 |
| WI | 1,234 | 1,242 | 1,630 | 1,645 | 2,011 | 2,043 | 1.6 |
| 23-State Total | 8,131 | 8,257 | 1,760 | 1,780 | 14,311 | 14,700 | 2.7 |

¹ 2005 and 2006 revised.

² Includes dry cows, excludes heifers not yet fresh.

³ Excludes milk sucked by calves.

Monthly Milk Cows 23 States



**Milk Cows and Production: By State and United States,
Revised January-March, 2005-2006**

| State | Jan-Mar Milk Cows ¹ | | Jan-Mar Milk Production ² | | Change From 2005 |
|-----------------|--------------------------------|-------------------|--------------------------------------|-----------------------|------------------------|
| | 2005 | 2006 | 2005 | 2006 | |
| | <i>1,000 Head</i> | <i>1,000 Head</i> | <i>Million Pounds</i> | <i>Million Pounds</i> | <i>Percent</i> |
| AL | 16 | 14 | 64 | 60 | -6.3 |
| AK | 1.2 | 0.8 | 3.6 | 2.4 | -33.3 |
| AZ | 164 | 167 | 969 | 1,029 | 6.2 |
| AR | 23 | 21 | 77 | 71 | -7.8 |
| CA | 1,742 | 1,781 | 9,152 | 9,706 | 6.1 |
| CO | 101 | 106 | 554 | 607 | 9.6 |
| CT | 20 | 20 | 99 | 97 | -2.0 |
| DE | 7.5 | 7.0 | 34.0 | 32.2 | -5.3 |
| FL | 139 | 134 | 643 | 607 | -5.6 |
| GA | 83 | 78 | 379 | 379 | |
| HI | 5.7 | 4.5 | 17.7 | 15.2 | -14.1 |
| ID | 438 | 474 | 2,361 | 2,551 | 8.0 |
| IL | 105 | 104 | 503 | 509 | 1.2 |
| IN | 155 | 162 | 767 | 821 | 7.0 |
| IA | 190 | 200 | 983 | 1,041 | 5.9 |
| KS | 109 | 111 | 560 | 586 | 4.6 |
| KY | 109 | 101 | 352 | 351 | -0.3 |
| LA | 36 | 33 | 128 | 119 | -7.0 |
| ME | 33 | 32 | 147 | 140 | -4.8 |
| MD | 73 | 70 | 299 | 292 | -2.3 |
| MA | 17 | 16 | 73 | 72 | -1.4 |
| MI | 308 | 314 | 1,621 | 1,733 | 6.9 |
| MN | 457 | 448 | 2,048 | 2,107 | 2.9 |
| MS | 26 | 23 | 109 | 97 | -11.0 |
| MO | 118 | 114 | 468 | 487 | 4.1 |
| MT | 18 | 19 | 89 | 95 | 6.7 |
| NE | 60 | 60 | 268 | 277 | 3.4 |
| NV | 25 | 27 | 128 | 140 | 9.4 |
| NH | 16 | 15.5 | 75 | 77 | 2.7 |
| NJ | 12 | 12 | 49 | 48 | -2.0 |
| NM | 320 | 344 | 1,620 | 1,879 | 16.0 |
| NY | 649 | 650 | 2,935 | 3,060 | 4.3 |
| NC | 55 | 52 | 260 | 249 | -4.2 |
| ND | 33 | 33 | 128 | 131 | 2.3 |
| OH | 267 | 273 | 1,163 | 1,209 | 4.0 |
| OK | 75 | 75 | 311 | 311 | |
| OR | 120 | 121 | 561 | 551 | -1.8 |
| PA | 561 | 556 | 2,560 | 2,723 | 6.4 |
| RI | 1.0 | 1.0 | 4.6 | 4.6 | |
| SC | 18 | 17 | 81 | 76 | -6.2 |
| SD | 81 | 81 | 350 | 364 | 4.0 |
| TN | 72 | 69 | 295 | 284 | -3.7 |
| TX | 318 | 326 | 1,592 | 1,826 | 14.7 |
| UT | 88 | 85 | 404 | 404 | |
| VT | 143 | 143 | 655 | 663 | 1.2 |
| VA | 105 | 103 | 452 | 462 | 2.2 |
| WA | 237 | 237 | 1,372 | 1,353 | -1.4 |
| WV | 13 | 13 | 48 | 50 | 4.2 |
| WI | 1,234 | 1,240 | 5,522 | 5,779 | 4.7 |
| WY | 4.4 | 6.4 | 15.8 | 25.8 | 63.3 |
| US ³ | 9,002 | 9,094 | 43,350 | 45,553 | 5.1 |

¹ Includes dry cows, excludes heifers not yet fresh.

² Excludes milk sucked by calves.

³ May not add due to rounding.

**Milk Cows and Production: By State and United States,
Preliminary April-June, 2005-2006**

| State | Apr-Jun Milk Cows ¹ | | Apr-Jun Milk Production ² | | Change From 2005 |
|-----------------|--------------------------------|-------------------|--------------------------------------|-----------------------|------------------------|
| | 2005 | 2006 | 2005 | 2006 | |
| | <i>1,000 Head</i> | <i>1,000 Head</i> | <i>Million Pounds</i> | <i>Million Pounds</i> | <i>Percent</i> |
| AL | 16 | 14 | 63 | 57 | -9.5 |
| AK | 1.2 | 0.8 | 3.8 | 2.5 | -34.2 |
| AZ | 163 | 172 | 994 | 1,078 | 8.5 |
| AR | 23 | 21 | 80 | 74 | -7.5 |
| CA | 1,750 | 1,784 | 9,662 | 9,894 | 2.4 |
| CO | 104 | 109 | 595 | 642 | 7.9 |
| CT | 20 | 19.5 | 101 | 95 | -5.9 |
| DE | 7.5 | 7.0 | 35.0 | 30.8 | -12.0 |
| FL | 138 | 133 | 632 | 595 | -5.9 |
| GA | 82 | 77 | 382 | 383 | 0.3 |
| HI | 5.4 | 4.4 | 19.0 | 14.8 | -22.1 |
| ID | 446 | 483 | 2,536 | 2,746 | 8.3 |
| IL | 104 | 103 | 508 | 508 | |
| IN | 157 | 166 | 830 | 851 | 2.5 |
| IA | 193 | 200 | 1,030 | 1,048 | 1.7 |
| KS | 112 | 113 | 592 | 612 | 3.4 |
| KY | 107 | 98 | 369 | 352 | -4.6 |
| LA | 36 | 32 | 124 | 112 | -9.7 |
| ME | 33 | 32 | 155 | 147 | -5.2 |
| MD | 72 | 70 | 300 | 289 | -3.7 |
| MA | 17 | 16 | 76 | 73 | -3.9 |
| MI | 312 | 319 | 1,740 | 1,786 | 2.6 |
| MN | 455 | 450 | 2,135 | 2,138 | 0.1 |
| MS | 26 | 23 | 109 | 93 | -14.7 |
| MO | 119 | 116 | 510 | 498 | -2.4 |
| MT | 19 | 19 | 95 | 98 | 3.2 |
| NE | 60 | 61 | 279 | 289 | 3.6 |
| NV | 25 | 27 | 137 | 140 | 2.2 |
| NH | 16 | 15 | 79 | 76 | -3.8 |
| NJ | 12 | 12 | 50 | 48 | -4.0 |
| NM | 324 | 355 | 1,780 | 2,036 | 14.4 |
| NY | 646 | 649 | 3,116 | 3,130 | 0.4 |
| NC | 54 | 51 | 266 | 246 | -7.5 |
| ND | 33 | 32 | 135 | 131 | -3.0 |
| OH | 270 | 273 | 1,245 | 1,274 | 2.3 |
| OK | 75 | 75 | 321 | 317 | -1.2 |
| OR | 121 | 121 | 591 | 562 | -4.9 |
| PA | 564 | 556 | 2,745 | 2,763 | 0.7 |
| RI | 1.0 | 1.1 | 5.0 | 4.9 | -2.0 |
| SC | 18 | 17 | 79 | 77 | -2.5 |
| SD | 81 | 81 | 371 | 382 | 3.0 |
| TN | 71 | 67 | 300 | 284 | -5.3 |
| TX | 320 | 330 | 1,704 | 1,891 | 11.0 |
| UT | 89 | 85 | 417 | 411 | -1.4 |
| VT | 144 | 142 | 688 | 672 | -2.3 |
| VA | 105 | 103 | 466 | 469 | 0.6 |
| WA | 242 | 237 | 1,440 | 1,407 | -2.3 |
| WV | 13 | 13 | 49 | 51 | 4.1 |
| WI | 1,234 | 1,242 | 5,875 | 5,987 | 1.9 |
| WY | 4.5 | 6.7 | 17.1 | 30.8 | 80.1 |
| US ³ | 9,041 | 9,134 | 45,831 | 46,896 | 2.3 |

¹ Includes dry cows, excludes heifers not yet fresh.

² Excludes milk sucked by calves.

³ May not add due to rounding.

Reliability Statement

Survey Procedures: Primary data used to determine these estimates were obtained from a sample of producers. Individual States maintain a list of all known milk producers and information on the size of their herd. States use all known sources of producers to ensure that their lists are as complete as possible. Generally, all large producers and a sample of small producers are included in the survey. Questionnaires are mailed to producers near the end of the month to obtain data for the first day of the month. Additional reports are obtained by telephone, as needed, to supplement the mail response. Where feasible, States utilize state and federal administrative data, rather than conduct a monthly or quarterly survey, to estimate milk production. This eliminates duplication of data gathering by different government agencies. Indications of milk cow inventory are also obtained in the January and July Cattle Surveys.

Estimation Procedures: State offices prepare these estimates by using a combination of survey indications, historic trends, and any available administrative data. Individual State estimates are reviewed by the Agricultural Statistics Board for reasonableness.

Revision Policy: Milk production, rate per cow, and number of cows are subject to revision the following month for monthly States or the following quarter for the quarterly States. Normally, Federal Market Order sales are the main basis for revisions. However, data for all orders are not available in time for this revision. Estimates are again subject to revisions in February each year based on additional administrative data. In the event that additional changes are necessary, a third revision is possible in February the following year. Estimates are again reviewed after data from the five-year Census of Agriculture are available. No revisions are made after that date.

Reliability: Since all operations with dairy animals are not included in the sample, survey estimates are subject to sampling variability. Survey results are also subject to non-sampling errors such as omissions, duplications, and mistakes in reporting, recording, and processing the data. The effects of these errors cannot be measured directly. They are minimized through rigid quality controls in the data collection process and through a careful review of all reported data for consistency and reasonableness.

To assist users in evaluating the reliability of the estimates in this report, the "Root Mean Square Error" is shown for selected items on the next page. The "Root Mean Square Error" is a statistical measure based on past performance and is computed using the differences between first and final estimates. The "Root Mean Square Error" for milk cow inventory estimates over the past 10 April - June quarters is 0.2 percent. This means that chances are 2 out of 3 that the final April - June estimate will not be above or below the current estimate of 9.13 million head by more than 0.2 percent. Chances are 9 out of 10 that the difference will not exceed 0.3 percent.

Reliability of April-June Milk Estimates ¹

| Item | Root Mean Square Error | 90% Confidence Level | | Difference Between First and Latest Estimates | | | Quarters | |
|-----------------|------------------------|-----------------------|------------------------------|---|----------------------------|------------------------------|--------------------|--------------------|
| | | | | Average | Smallest | Largest | First Above Latest | First Below Latest |
| | | | | Million Pounds | Million Pounds | Million Pounds | Number | Number |
| Milk Production | <i>Percent</i> 0.4 | <i>Percent</i> 0.7 | <i>Million Pounds</i> 328 | <i>Million Pounds</i> 125 | <i>Million Pounds</i> 3 | <i>Million Pounds</i> 264 | <i>Number</i> 4 | <i>Number</i> 6 |
| All Milk Cows | <i>Percent</i> 0.2 | <i>Percent</i> 0.3 | <i>1,000 Head</i> 27 | <i>1,000 Head</i> 12 | <i>1,000 Head</i> 0 | <i>1,000 Head</i> 34 | <i>Number</i> 4 | <i>Number</i> 5 |

¹ Based on records for the past 10 April-June quarters.

Information Contacts

Listed below are the commodity specialists in the Livestock Branch of the National Agricultural Statistics Service to contact for additional information.

- Dan Kerestes, Chief, Livestock Branch (202) 720-3570
- William Weaver, Head, Livestock Section (202) 720-3570
 - Bruce Boess - Hogs and Pigs (202) 720-3106
 - Shawn Clark - Dairy Products (202) 690-3236
 - Jason Hardegree - Milk Production and Milk Cows (202) 720-3278
 - Scott Hollis - Sheep & Lambs, Goats (202) 720-4751
 - Mike Miller - Cattle, Cattle on Feed (202) 720-3040
 - Katy Paulsen - Livestock Slaughter (515) 284-4340
 - Charmaine Wilson - Dairy Products Prices (202) 690-2168

ACCESS TO REPORTS!!

For your convenience, there are several ways to obtain NASS reports, data products, and services:

INTERNET ACCESS

All NASS reports are available free of charge on the worldwide Internet. For access, connect to the Internet and go to the NASS Home Page at: www.nass.usda.gov.

E-MAIL SUBSCRIPTION

All NASS reports are available by subscription free of charge direct to your e-mail address. Starting with the NASS Home Page at www.nass.usda.gov, under the right navigation, *Receive reports by Email*, click on **National** or **State**. Follow the instructions on the screen.

PRINTED REPORTS OR DATA PRODUCTS

CALL OUR TOLL-FREE ORDER DESK: 800-999-6779 (U.S. and Canada)
Other areas, please call 703-605-6220 FAX: 703-605-6900
(Visa, MasterCard, check, or money order acceptable for payment.)

ASSISTANCE

For **assistance** with general agricultural statistics or further information about NASS or its products or services, contact the **Agricultural Statistics Hotline** at **800-727-9540**, 7:30 a.m. to 4:00 p.m. ET, or e-mail: nass@nass.usda.gov.

The U.S. Department of Agriculture (USDA) prohibits discrimination in all its programs and activities on the basis of race, color, national origin, age, disability, and where applicable, sex, marital status, familial status, parental status, religion, sexual orientation, genetic information, political beliefs, reprisal, or because all or part of an individual's income is derived from any public assistance program. (Not all prohibited bases apply to all programs.) Persons with disabilities who require alternative means for communication of program information (Braille, large print, audiotape, etc.) should contact USDA's TARGET Center at (202) 720-2600 (voice and TDD).

To file a complaint of discrimination, write to USDA, Director, Office of Civil Rights, 1400 Independence Avenue, S.W., Washington, D.C. 20250-9410, or call (800) 795-3272 (voice) or (202) 720-6382 (TDD). USDA is an equal opportunity provider and employer.