



# NASS

FACT FINDERS FOR AGRICULTURE  
UNITED STATES DEPARTMENT OF AGRICULTURE

Washington, D.C.

# Milk Production

Released September 18, 2006, by the National Agricultural Statistics Service (NASS), Agricultural Statistics Board, U.S. Department of Agriculture. For information on *Milk Production* call Jason Hardegree at 202-720-3278, office hours 7:30 a.m. to 4:00 p.m. ET.

## August Milk Production Up 1.6 Percent

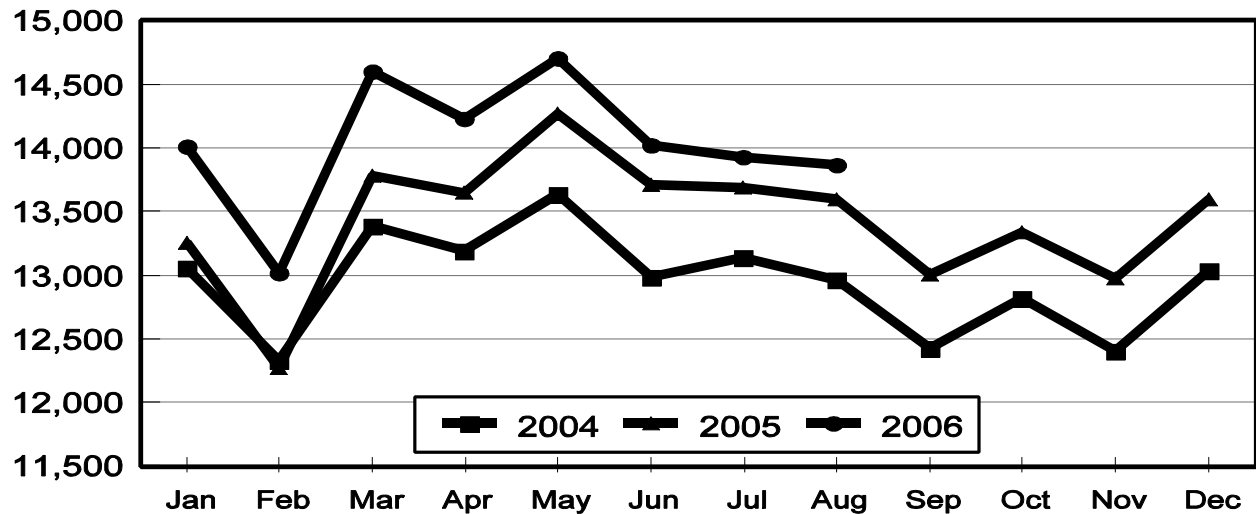
**Milk production** in the 23 major States during August totaled 13.9 billion pounds, up 1.6 percent from August 2005. July revised production, at 13.9 billion pounds, was up 1.5 percent from July 2005. The July revision represented an increase of 6 million pounds from last month's preliminary production estimate.

**Production per cow** in the 23 major States averaged 1,680 pounds for August, 9 pounds above August 2005.

**The number of milk cows** on farms in the 23 major States was 8.25 million head, 88,000 head more than August 2005, but 9,000 head less than July 2006.

## Monthly Milk Production 23 States

Million Pounds



**Milk Cows and Production: By Quarter, United States, 2005-2006 <sup>1</sup>**

Quarter	Milk Cows <sup>2</sup>		Milk Per Cow <sup>3</sup>		Milk Production <sup>3</sup>		
	2005	2006	2005	2006	2005	2006	Change From 2005
	<i>1,000 Head</i>	<i>1,000 Head</i>	<i>Pounds</i>	<i>Pounds</i>	<i>Million Pounds</i>	<i>Million Pounds</i>	<i>Percent</i>
Jan-Mar	9,002	9,094	4,816	5,009	43,350	45,553	5.1
Apr-Jun	9,041	9,135	5,069	5,134	45,831	46,902	2.3
Jul-Sep	9,060		4,871		44,134		
Oct-Dec	9,060		4,821		43,674		
Annual	9,041		19,576		176,989		

<sup>1</sup> May not add due to rounding.

<sup>2</sup> Includes dry cows, excludes heifers not yet fresh.

<sup>3</sup> Excludes milk sucked by calves.

**Milk Cows and Production: By Month, 23 Selected States, 2005-2006 <sup>1</sup>**

Month	Milk Cows <sup>2</sup>		Milk Per Cow <sup>3</sup>		Milk Production <sup>3</sup>		
	2005	2006	2005	2006	2005	2006	Change from 2005
	<i>1,000 Head</i>	<i>1,000 Head</i>	<i>Pounds</i>	<i>Pounds</i>	<i>Million Pounds</i>	<i>Million Pounds</i>	<i>Percent</i>
Jan	8,087	8,195	1,643	1,710	13,287	14,014	5.5
Feb	8,084	8,206	1,522	1,587	12,301	13,022	5.9
Mar	8,099	8,228	1,707	1,775	13,825	14,604	5.6
Apr	8,117	8,240	1,690	1,727	13,717	14,228	3.7
May	8,131	8,257	1,760	1,780	14,311	14,700	2.7
Jun	8,138	8,269	1,690	1,695	13,755	14,017	1.9
Jul	8,151	8,259	1,683	1,686	13,715	13,925	1.5
Aug	8,162	8,250	1,671	1,680	13,640	13,861	1.6
Sep	8,167		1,599		13,057		
Oct	8,168		1,637		13,373		
Nov	8,167		1,592		13,002		
Dec	8,179		1,663		13,599		
Annual	8,138		19,857		161,582		

<sup>1</sup> 2006 revised.

<sup>2</sup> Includes dry cows, excludes heifers not yet fresh.

<sup>3</sup> Excludes milk sucked by calves.

**Estimated Milk Cows and Production: By Month, United States, 2005-2006 <sup>1</sup>**

Month	Milk Cows <sup>2</sup>		Milk Per Cow <sup>3</sup>		Milk Production <sup>3</sup>		
	2005	2006	2005	2006	2005	2006	Change From 2005
	<i>1,000 Head</i>	<i>1,000 Head</i>	<i>Pounds</i>	<i>Pounds</i>	<i>Million Pounds</i>	<i>Million Pounds</i>	<i>Percent</i>
Jan	9,000	9,079	1,624	1,689	14,614	15,333	4.9
Feb	8,996	9,091	1,504	1,567	13,530	14,248	5.3
Mar	9,009	9,113	1,688	1,753	15,206	15,972	5.0
Apr	9,030	9,118	1,666	1,704	15,047	15,538	3.3
May	9,042	9,137	1,735	1,757	15,697	16,055	2.3
Jun	9,050	9,147	1,668	1,674	15,087	15,309	1.5
Jul	9,053	9,135	1,656	1,664	14,978	15,205	1.5
Aug	9,060	9,125	1,643	1,658	14,896	15,126	1.5
Sep	9,066		1,572		14,260		
Oct	9,060		1,613		14,611		
Nov	9,056		1,569		14,209		
Dec	9,063		1,639		14,854		
Annual	9,041		19,576		176,989		

<sup>1</sup> 2005 revised.

<sup>2</sup> Includes dry cows, excludes heifers not yet fresh.

<sup>3</sup> Excludes milk sucked by calves.

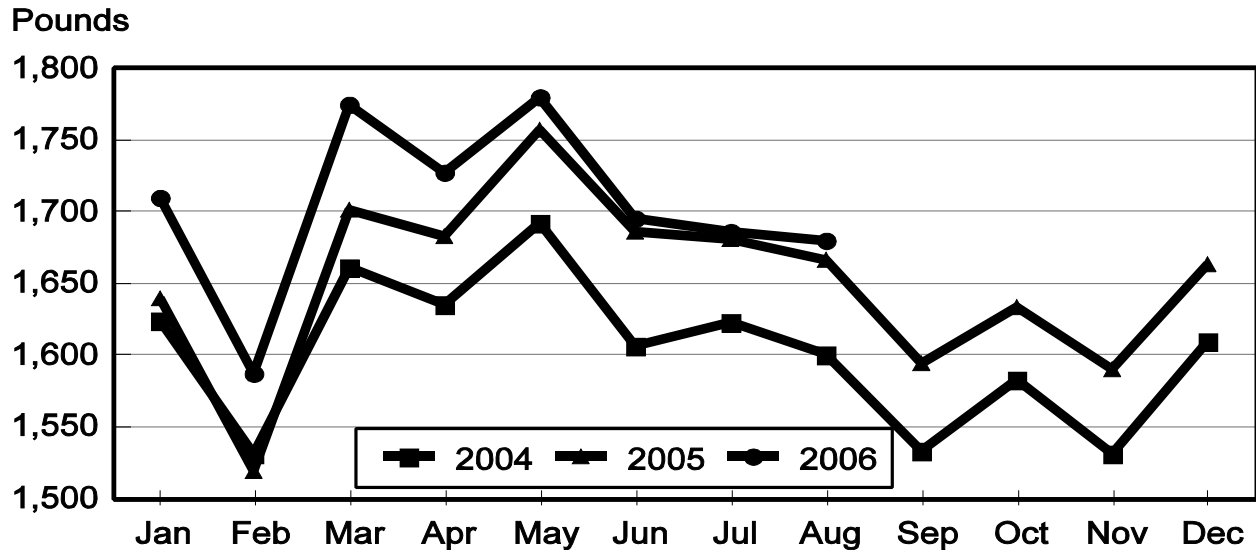
**Milk Cows and Production: By State, August 2005-2006**

State	Milk Cows <sup>1</sup>		Milk Per Cow <sup>2</sup>		Milk Production <sup>2</sup>		
	2005	2006	2005	2006	2005	2006	Change From 2005
	<i>1,000 Head</i>	<i>1,000 Head</i>	<i>Pounds</i>	<i>Pounds</i>	<i>Million Pounds</i>	<i>Million Pounds</i>	<i>Percent</i>
AZ	161	167	1,770	1,715	285	286	0.4
CA	1,759	1,768	1,795	1,860	3,157	3,288	4.1
CO	105	112	1,970	1,990	207	223	7.7
FL	135	130	1,230	1,255	166	163	-1.8
ID	468	495	1,940	1,960	908	970	6.8
IL	104	103	1,515	1,550	158	160	1.3
IN	157	165	1,660	1,625	261	268	2.7
IA	196	200	1,740	1,645	341	329	-3.5
KS	112	113	1,690	1,730	189	195	3.2
KY	106	97	1,030	1,020	109	99	-9.2
MI	314	319	1,830	1,830	575	584	1.6
MN	450	450	1,510	1,525	680	686	0.9
MO	115	115	1,300	1,185	150	136	-9.3
NM	331	362	1,825	1,780	604	644	6.6
NY	647	643	1,600	1,605	1,035	1,032	-0.3
OH	270	274	1,460	1,480	394	406	3.0
OR	121	121	1,630	1,570	197	190	-3.6
PA	562	554	1,575	1,580	885	875	-1.1
TX	320	337	1,625	1,655	520	558	7.3
VT	143	141	1,550	1,510	222	213	-4.1
VA	105	103	1,360	1,360	143	140	-2.1
WA	245	237	1,970	1,955	483	463	-4.1
WI	1,236	1,244	1,595	1,570	1,971	1,953	-0.9
23-State Total	8,162	8,250	1,671	1,680	13,640	13,861	1.6

<sup>1</sup> Includes dry cows, excludes heifers not yet fresh.

<sup>2</sup> Excludes milk sucked by calves.

## Monthly Milk per Cow 23 States



**Milk Cows and Production: By State, July 2005-2006 <sup>1</sup>**

State	Milk Cows <sup>2</sup>		Milk per Cow <sup>3</sup>		Milk Production <sup>3</sup>		
	2005	2006	2005	2006	2005	2006	Change From 2005
	<i>1,000 Head</i>	<i>1,000 Head</i>	<i>Pounds</i>	<i>Pounds</i>	<i>Million Pounds</i>	<i>Million Pounds</i>	<i>Percent</i>
AZ	162	170	1,865	1,805	302	307	1.7
CA	1,756	1,772	1,780	1,760	3,126	3,119	-0.2
CO	105	112	1,960	1,980	206	222	7.8
FL	136	131	1,315	1,340	179	176	-1.7
ID	460	490	1,960	1,960	902	960	6.4
IL	104	103	1,580	1,600	164	165	0.6
IN	156	166	1,700	1,670	265	277	4.5
IA	193	200	1,720	1,690	332	338	1.8
KS	112	113	1,695	1,720	190	194	2.1
KY	106	97	1,065	1,060	113	103	-8.8
MI	313	321	1,850	1,875	579	602	4.0
MN	455	450	1,510	1,560	687	702	2.2
MO	117	115	1,360	1,270	159	146	-8.2
NM	328	362	1,845	1,880	605	681	12.6
NY	647	647	1,600	1,605	1,035	1,038	0.3
OH	270	274	1,480	1,500	400	411	2.8
OR	121	121	1,640	1,580	198	191	-3.5
PA	561	555	1,590	1,600	892	888	-0.4
TX	320	335	1,710	1,760	547	590	7.9
VT	143	141	1,565	1,540	224	217	-3.1
VA	105	103	1,390	1,390	146	143	-2.1
WA	245	237	1,985	1,960	486	465	-4.3
WI	1,236	1,244	1,600	1,600	1,978	1,990	0.6
23-State Total	8,151	8,259	1,683	1,686	13,715	13,925	1.5

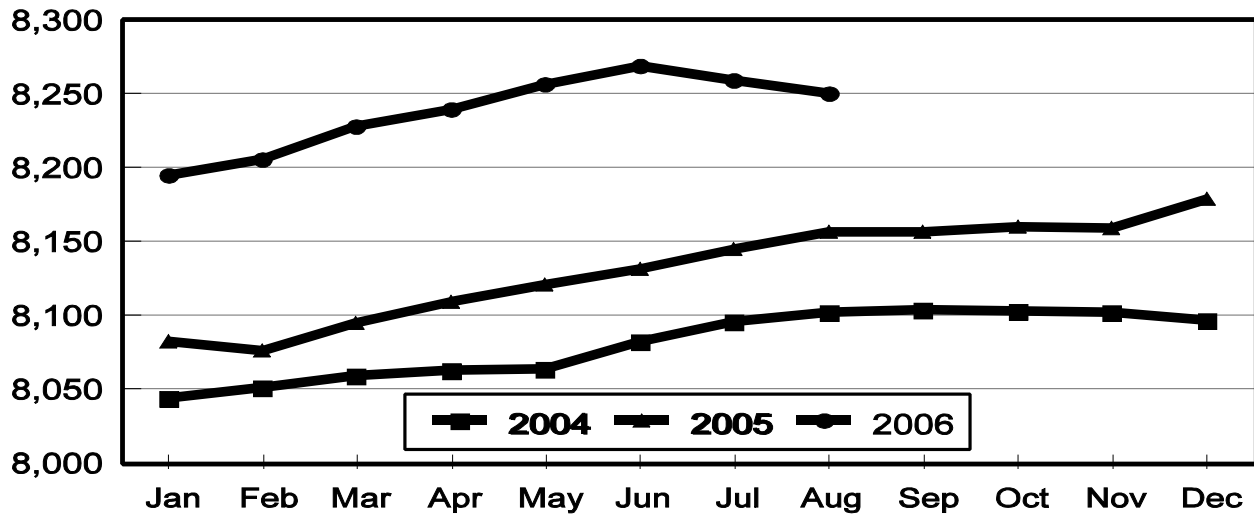
<sup>1</sup> 2005 and 2006 revised.

<sup>2</sup> Includes dry cows, excludes heifers not yet fresh.

<sup>3</sup> Excludes milk sucked by calves.

## Monthly Milk Cows 23 States

Thousand Head



## Reliability Statement

**Survey Procedures:** Primary data used to determine these estimates were obtained from a sample of producers. Individual States maintain a list of all known milk producers and information on the size of their herd. States use all known sources of producers to ensure that their lists are as complete as possible. Generally, all large producers and a sample of small producers are included in the survey. Questionnaires are mailed to producers near the end of the month to obtain data for the first day of the month. Additional reports are obtained by telephone, as needed, to supplement the mail response. Where feasible, States utilize state and federal administrative data, rather than conduct a monthly or quarterly survey, to estimate milk production. This eliminates duplication of data gathering by different government agencies. Indications of milk cow inventory are also obtained in the January and July Cattle Surveys.

**Estimation Procedures:** State offices prepare these estimates by using a combination of survey indications, historic trends, and any available administrative data. Individual State estimates are reviewed by the Agricultural Statistics Board for reasonableness.

**Revision Policy:** Milk production, rate per cow, and number of cows are subject to revision the following month for monthly States or the following quarter for the quarterly States. Normally, Federal Market Order sales are the main basis for revisions. However, data for all orders are not available in time for this revision. Estimates are again subject to revisions in February each year based on additional administrative data. In the event that additional changes are necessary, a third revision is possible in February the following year. Estimates are again reviewed after data from the five-year Census of Agriculture are available. No revisions are made after that date.

**Reliability:** Since all operations with dairy animals are not included in the sample, survey estimates are subject to sampling variability. Survey results are also subject to non-sampling errors such as omissions, duplications, and mistakes in reporting, recording, and processing the data. The effects of these errors cannot be measured directly. They are minimized through rigid quality controls in the data collection process and through a careful review of all reported data for consistency and reasonableness.

To assist users in evaluating the reliability of the estimates in this report, the "Root Mean Square Error" is shown for selected items on the next page. The "Root Mean Square Error" is a statistical measure based on past performance and is computed using the differences between first and final estimates. The "Root Mean Square Error" for milk cow inventory estimates over the past 10 April - June quarters is 0.2 percent. This means that chances are 2 out of 3 that the final April - June estimate will not be above or below the current estimate of 9.14 million head by more than 0.2 percent. Chances are 9 out of 10 that the difference will not exceed 0.3 percent.

**Reliability of April-June Milk Estimates <sup>1</sup>**

Item	Root Mean Square Error	90% Confidence Level		Difference Between First and Latest Estimates			Quarters	
				Average	Smallest	Largest	First Above Latest	First Below Latest
				<i>Million Pounds</i>	<i>Million Pounds</i>	<i>Million Pounds</i>	<i>Number</i>	<i>Number</i>
Milk Production	<i>Percent</i> 0.4	<i>Percent</i> 0.7	<i>Million Pounds</i> 328	<i>Million Pounds</i> 125	<i>Million Pounds</i> 3	<i>Million Pounds</i> 264	<i>Number</i> 4	<i>Number</i> 6
All Milk Cows	<i>Percent</i> 0.2	<i>Percent</i> 0.3	<i>1,000 Head</i> 27	<i>1,000 Head</i> 12	<i>1,000 Head</i> 0	<i>1,000 Head</i> 34	<i>Number</i> 4	<i>Number</i> 5

<sup>1</sup> Based on records for the past 10 April-June quarters.

**Information Contacts**

Listed below are the commodity specialists in the Livestock Branch of the National Agricultural Statistics Service to contact for additional information.

- Dan Kerestes, Chief, Livestock Branch ..... (202) 720-3570
- William Weaver, Head, Livestock Section ..... (202) 720-3570
  - Bruce Boess - Hogs and Pigs ..... (202) 720-3106
  - Shawn Clark - Dairy Products ..... (202) 690-3236
  - Jason Hardegree - Milk Production and Milk Cows ..... (202) 720-3278
  - Scott Hollis - Sheep & Lambs, Goats ..... (202) 720-4751
  - Mike Miller - Cattle, Cattle on Feed ..... (202) 720-3040
  - Katy Paulsen - Livestock Slaughter ..... (515) 284-4340
  - Charmaine Wilson - Dairy Products Prices ..... (202) 690-2168

## ACCESS TO REPORTS!!

---

For your convenience, there are several ways to obtain NASS reports, data products, and services:

### INTERNET ACCESS

All NASS reports are available free of charge on the worldwide Internet. For access, connect to the Internet and go to the NASS Home Page at: [www.nass.usda.gov](http://www.nass.usda.gov).

### E-MAIL SUBSCRIPTION

All NASS reports are available by subscription free of charge direct to your e-mail address. Starting with the NASS Home Page at [www.nass.usda.gov](http://www.nass.usda.gov), under the right navigation, *Receive reports by Email*, click on **National** or **State**. Follow the instructions on the screen.

-----

### PRINTED REPORTS OR DATA PRODUCTS

**CALL OUR TOLL-FREE ORDER DESK: 800-999-6779 (U.S. and Canada)**  
**Other areas, please call 703-605-6220      FAX: 703-605-6900**  
**(Visa, MasterCard, check, or money order acceptable for payment.)**

-----

### ASSISTANCE

For **assistance** with general agricultural statistics or further information about NASS or its products or services, contact the **Agricultural Statistics Hotline** at **800-727-9540**, 7:30 a.m. to 4:00 p.m. ET, or e-mail: [nass@nass.usda.gov](mailto:nass@nass.usda.gov).

The U.S. Department of Agriculture (USDA) prohibits discrimination in all its programs and activities on the basis of race, color, national origin, age, disability, and where applicable, sex, marital status, familial status, parental status, religion, sexual orientation, genetic information, political beliefs, reprisal, or because all or part of an individual's income is derived from any public assistance program. (Not all prohibited bases apply to all programs.) Persons with disabilities who require alternative means for communication of program information (Braille, large print, audiotape, etc.) should contact USDA's TARGET Center at (202) 720-2600 (voice and TDD).

To file a complaint of discrimination, write to USDA, Director, Office of Civil Rights, 1400 Independence Avenue, S.W., Washington, D.C. 20250-9410, or call (800) 795-3272 (voice) or (202) 720-6382 (TDD). USDA is an equal opportunity provider and employer.