



# NASS

FACT FINDERS FOR AGRICULTURE  
UNITED STATES DEPARTMENT OF AGRICULTURE

Washington, D.C.

# Milk Production

Released October 18, 2006, by the National Agricultural Statistics Service (NASS), Agricultural Statistics Board, U.S. Department of Agriculture. For information on *Milk Production* call Jason Hardegree at 202-720-3278, office hours 7:30 a.m. to 4:00 p.m. ET.

## September Milk Production Up 2 Percent

**Milk production** in the 23 major States during September totaled 13.3 billion pounds, up 2 percent from September 2005. August production, unrevised at 13.9 billion pounds, is up 1.6 percent from August 2005.

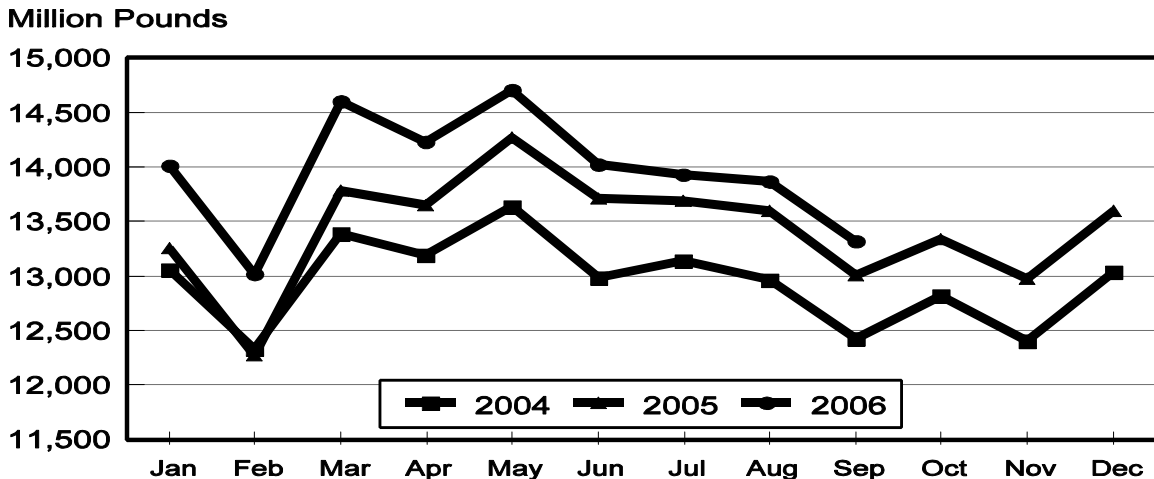
**Production per cow** in the 23 major States averaged 1,615 pounds for September, 16 pounds above September 2005.

**The number of milk cows** on farms in the 23 major States was 8.25 million head, 79,000 head more than September 2005, but 6,000 head less than August 2006.

## July - September Milk Production Up 1.4 Percent

Milk production in the U.S. during the July - September quarter totaled 44.7 billion pounds, up 1.4 percent from the July - September quarter last year. The average number of milk cows in the U.S. during the quarter was 9.12 million head, 57,000 head more than the same period last year.

## Monthly Milk Production 23 States



**Milk Cows and Production: By Quarter, United States, 2005-2006 <sup>1</sup>**

Quarter	Milk Cows <sup>2</sup>		Milk Per Cow <sup>3</sup>		Milk Production <sup>3</sup>		
	2005	2006	2005	2006	2005	2006	Change From 2005
	<i>1,000 Head</i>	<i>1,000 Head</i>	<i>Pounds</i>	<i>Pounds</i>	<i>Million Pounds</i>	<i>Million Pounds</i>	<i>Percent</i>
Jan-Mar	9,002	9,094	4,816	5,009	43,350	45,553	5.1
Apr-Jun	9,041	9,133	5,069	5,136	45,831	46,908	2.3
Jul-Sep	9,060	9,117	4,871	4,907	44,134	44,737	1.4
Oct-Dec	9,060		4,821		43,674		
Annual	9,041		19,576		176,989		

<sup>1</sup> May not add due to rounding.

<sup>2</sup> Includes dry cows, excludes heifers not yet fresh.

<sup>3</sup> Excludes milk sucked by calves.

**Milk Cows and Production: By Month, 23 Selected States, 2005-2006 <sup>1</sup>**

Month	Milk Cows <sup>2</sup>		Milk Per Cow <sup>3</sup>		Milk Production <sup>3</sup>		
	2005	2006	2005	2006	2005	2006	Change from 2005
	<i>1,000 Head</i>	<i>1,000 Head</i>	<i>Pounds</i>	<i>Pounds</i>	<i>Million Pounds</i>	<i>Million Pounds</i>	<i>Percent</i>
Jan	8,087	8,195	1,643	1,710	13,287	14,014	5.5
Feb	8,084	8,206	1,522	1,587	12,301	13,022	5.9
Mar	8,099	8,228	1,707	1,775	13,825	14,604	5.6
Apr	8,117	8,240	1,690	1,727	13,717	14,228	3.7
May	8,131	8,257	1,760	1,780	14,311	14,700	2.7
Jun	8,138	8,269	1,690	1,695	13,755	14,017	1.9
Jul	8,151	8,259	1,683	1,686	13,715	13,925	1.5
Aug	8,162	8,252	1,671	1,680	13,640	13,861	1.6
Sep	8,167	8,246	1,599	1,615	13,057	13,318	2.0
Oct	8,168		1,637		13,373		
Nov	8,167		1,592		13,002		
Dec	8,179		1,663		13,599		
Annual	8,138		19,857		161,582		

<sup>1</sup> 2006 revised.

<sup>2</sup> Includes dry cows, excludes heifers not yet fresh.

<sup>3</sup> Excludes milk sucked by calves.

**Estimated Milk Cows and Production: By Month, United States, 2005-2006 <sup>1</sup>**

Month	Milk Cows <sup>2</sup>		Milk Per Cow <sup>3</sup>		Milk Production <sup>3</sup>		
	2005	2006	2005	2006	2005	2006	Change From 2005
	<i>1,000 Head</i>	<i>1,000 Head</i>	<i>Pounds</i>	<i>Pounds</i>	<i>Million Pounds</i>	<i>Million Pounds</i>	<i>Percent</i>
Jan	9,000	9,079	1,624	1,689	14,614	15,333	4.9
Feb	8,996	9,091	1,504	1,567	13,530	14,248	5.3
Mar	9,009	9,113	1,688	1,753	15,206	15,972	5.0
Apr	9,030	9,120	1,666	1,704	15,047	15,541	3.3
May	9,042	9,135	1,735	1,758	15,697	16,056	2.3
Jun	9,050	9,145	1,668	1,674	15,087	15,311	1.5
Jul	9,053	9,129	1,656	1,661	14,978	15,159	1.2
Aug	9,060	9,116	1,643	1,655	14,896	15,085	1.3
Sep	9,066	9,107	1,572	1,591	14,260	14,493	1.6
Oct	9,060		1,613		14,611		
Nov	9,056		1,569		14,209		
Dec	9,063		1,639		14,854		
Annual	9,041		19,576		176,989		

<sup>1</sup> 2005 revised.

<sup>2</sup> Includes dry cows, excludes heifers not yet fresh.

<sup>3</sup> Excludes milk sucked by calves.

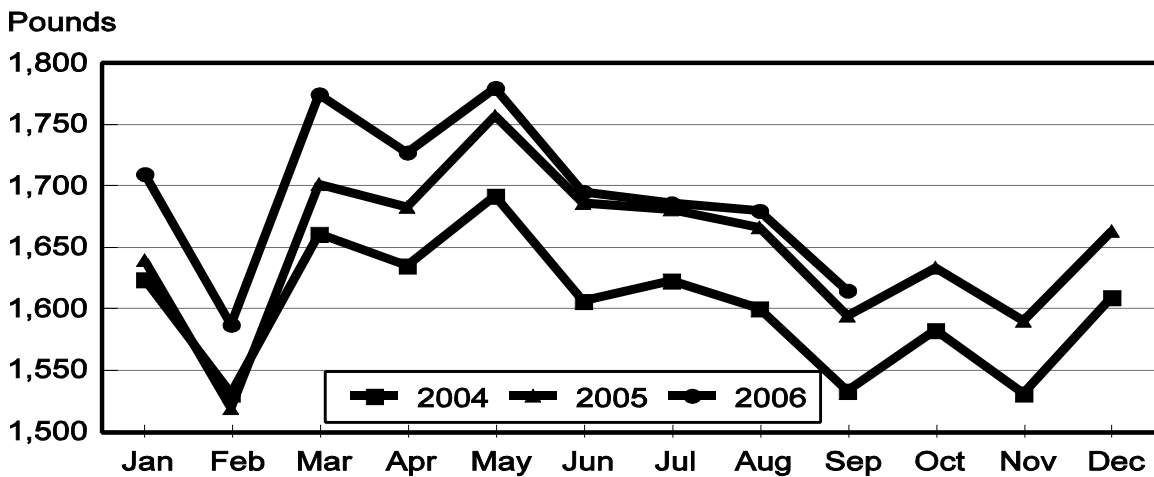
**Milk Cows and Production: By State, September 2005-2006**

State	Milk Cows <sup>1</sup>		Milk Per Cow <sup>2</sup>		Milk Production <sup>2</sup>		
	2005	2006	2005	2006	2005	2006	Change From 2005
	<i>1,000 Head</i>	<i>1,000 Head</i>	<i>Pounds</i>	<i>Pounds</i>	<i>Million Pounds</i>	<i>Million Pounds</i>	<i>Percent</i>
AZ	161	165	1,725	1,710	278	282	1.4
CA	1,762	1,772	1,750	1,775	3,084	3,145	2.0
CO	106	112	1,875	1,910	199	214	7.5
FL	134	130	1,105	1,125	148	146	-1.4
ID	469	497	1,850	1,860	868	924	6.5
IL	104	103	1,450	1,485	151	153	1.3
IN	156	165	1,615	1,595	252	263	4.4
IA	197	200	1,665	1,590	328	318	-3.0
KS	112	113	1,610	1,670	180	189	5.0
KY	105	96	980	970	103	93	-9.7
MI	313	319	1,750	1,795	548	573	4.6
MN	450	450	1,435	1,470	646	662	2.5
MO	115	115	1,210	1,180	139	136	-2.2
NM	333	360	1,710	1,650	569	594	4.4
NY	649	640	1,515	1,530	983	979	-0.4
OH	270	274	1,420	1,450	383	397	3.7
OR	121	118	1,570	1,570	190	185	-2.6
PA	561	553	1,500	1,560	842	863	2.5
TX	320	338	1,515	1,585	485	536	10.5
VT	142	141	1,480	1,460	210	206	-1.9
VA	105	103	1,325	1,300	139	134	-3.6
WA	245	237	1,895	1,880	464	446	-3.9
WI	1,237	1,245	1,510	1,510	1,868	1,880	0.6
23-State Total	8,167	8,246	1,599	1,615	13,057	13,318	2.0

<sup>1</sup> Includes dry cows, excludes heifers not yet fresh.

<sup>2</sup> Excludes milk sucked by calves.

**Monthly Milk per Cow  
23 States**



**Milk Cows and Production: By State, August 2005-2006 <sup>1</sup>**

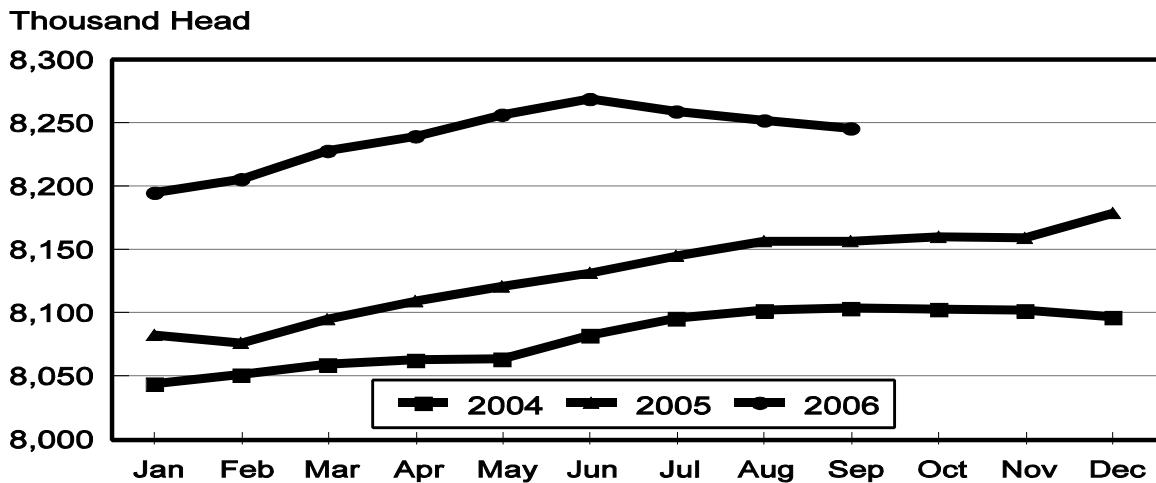
State	Milk Cows <sup>2</sup>		Milk per Cow <sup>3</sup>		Milk Production <sup>3</sup>		
	2005	2006	2005	2006	2005	2006	Change From 2005
	<i>1,000 Head</i>	<i>1,000 Head</i>	<i>Pounds</i>	<i>Pounds</i>	<i>Million Pounds</i>	<i>Million Pounds</i>	<i>Percent</i>
AZ	161	167	1,770	1,715	285	286	0.4
CA	1,759	1,769	1,795	1,860	3,157	3,290	4.2
CO	105	112	1,970	1,990	207	223	7.7
FL	135	130	1,230	1,180	166	153	-7.8
ID	468	497	1,940	1,960	908	974	7.3
IL	104	103	1,515	1,550	158	160	1.3
IN	157	165	1,660	1,625	261	268	2.7
IA	196	200	1,740	1,645	341	329	-3.5
KS	112	113	1,690	1,740	189	197	4.2
KY	106	96	1,030	990	109	95	-12.8
MI	314	319	1,830	1,830	575	584	1.6
MN	450	450	1,510	1,525	680	686	0.9
MO	115	115	1,300	1,185	150	136	-9.3
NM	331	362	1,825	1,780	604	644	6.6
NY	647	643	1,600	1,605	1,035	1,032	-0.3
OH	270	274	1,460	1,480	394	406	3.0
OR	121	120	1,630	1,580	197	190	-3.6
PA	562	554	1,575	1,580	885	875	-1.1
TX	320	337	1,625	1,655	520	558	7.3
VT	143	141	1,550	1,510	222	213	-4.1
VA	105	103	1,360	1,340	143	138	-3.5
WA	245	238	1,970	1,980	483	471	-2.5
WI	1,236	1,244	1,595	1,570	1,971	1,953	-0.9
23-State Total	8,162	8,252	1,671	1,680	13,640	13,861	1.6

<sup>1</sup> 2005 and 2006 revised.

<sup>2</sup> Includes dry cows, excludes heifers not yet fresh.

<sup>3</sup> Excludes milk sucked by calves.

### Monthly Milk Cows 23 States



**Milk Cows and Production: By State and United States,  
Revised April-June, 2005-2006**

State	Apr-Jun Milk Cows <sup>1</sup>		Apr-Jun Milk Production <sup>2</sup>		Change From 2005
	2005	2006	2005	2006	
	<i>1,000 Head</i>	<i>1,000 Head</i>	<i>Million Pounds</i>	<i>Million Pounds</i>	<i>Percent</i>
AL	16	14	63	56	-11.1
AK	1.2	0.8	3.8	2.5	-34.2
AZ	163	172	994	1,078	8.5
AR	23	21	80	71	-11.3
CA	1,750	1,784	9,662	9,903	2.5
CO	104	109	595	642	7.9
CT	20	19.5	101	95	-5.9
DE	7.5	7.0	35.0	30.8	-12.0
FL	138	133	632	600	-5.1
GA	82	77	382	383	0.3
HI	5.4	4.4	19.0	14.8	-22.1
ID	446	484	2,536	2,757	8.7
IL	104	103	508	508	
IN	157	166	830	851	2.5
IA	193	200	1,030	1,048	1.7
KS	112	113	592	612	3.4
KY	107	98	369	349	-5.4
LA	36	32	124	112	-9.7
ME	33	32	155	147	-5.2
MD	72	70	300	289	-3.7
MA	17	16	76	73	-3.9
MI	312	319	1,740	1,786	2.6
MN	455	450	2,135	2,142	0.3
MS	26	23	109	93	-14.7
MO	119	116	510	498	-2.4
MT	19	19	95	95	
NE	60	61	279	289	3.6
NV	25	27	137	140	2.2
NH	16	15	79	76	-3.8
NJ	12	11.5	50	47	-6.0
NM	324	355	1,780	2,036	14.4
NY	646	649	3,116	3,130	0.4
NC	54	51	266	246	-7.5
ND	33	32	135	125	-7.4
OH	270	273	1,245	1,263	1.4
OK	75	74	321	313	-2.5
OR	121	121	591	562	-4.9
PA	564	556	2,745	2,763	0.7
RI	1.0	1.1	5.0	4.9	-2.0
SC	18	17	79	77	-2.5
SD	81	81	371	382	3.0
TN	71	67	300	284	-5.3
TX	320	330	1,704	1,891	11.0
UT	89	85	417	435	4.3
VT	144	142	688	672	-2.3
VA	105	103	466	467	0.2
WA	242	237	1,440	1,407	-2.3
WV	13	13	49	51	4.1
WI	1,234	1,242	5,875	5,980	1.8
WY	4.5	6.7	17.1	30.8	80.1
US <sup>3</sup>	9,041	9,133	45,831	46,908	2.3

<sup>1</sup> Includes dry cows, excludes heifers not yet fresh.

<sup>2</sup> Excludes milk sucked by calves.

<sup>3</sup> May not add due to rounding.

**Milk Cows and Production: By State and United States,  
Preliminary July-September, 2005-2006**

State	Jul-Sep Milk Cows <sup>1</sup>		Jul-Sep Milk Production <sup>2</sup>		Change From 2005
	2005	2006	2005	2006	
	<i>1,000 Head</i>	<i>1,000 Head</i>	<i>Million Pounds</i>	<i>Million Pounds</i>	<i>Percent</i>
AL	16	14	47	41	-12.8
AK	1.1	0.8	3.4	2.7	-20.6
AZ	161	167	865	875	1.2
AR	22	20	73	61	-16.4
CA	1,759	1,771	9,367	9,554	2.0
CO	105	112	612	659	7.7
CT	20	19	92	86	-6.5
DE	7.5	7.0	32.3	29.0	-10.2
FL	135	130	493	475	-3.7
GA	81	76	310	312	0.6
HI	5.3	4.2	17.4	14.0	-19.5
ID	466	495	2,678	2,858	6.7
IL	104	103	473	478	1.1
IN	156	165	778	808	3.9
IA	195	200	1,001	985	-1.6
KS	112	113	559	580	3.8
KY	106	96	325	291	-10.5
LA	34	31	88	80	-9.1
ME	33	32	151	145	-4.0
MD	72	70	281	266	-5.3
MA	16	15.5	72	68	-5.6
MI	313	320	1,702	1,759	3.3
MN	452	450	2,013	2,050	1.8
MS	25	22	81	68	-16.0
MO	116	115	448	418	-6.7
MT	19	18	95	87	-8.4
NE	60	61	263	273	3.8
NV	25	27	137	139	1.5
NH	16	15	74	71	-4.1
NJ	12	11	47	41	-12.8
NM	331	361	1,778	1,919	7.9
NY	648	643	3,053	3,049	-0.1
NC	54	50	248	219	-11.7
ND	32	31	132	119	-9.8
OH	270	274	1,177	1,214	3.1
OK	75	72	311	300	-3.5
OR	121	120	585	566	-3.2
PA	561	554	2,619	2,626	0.3
RI	1.1	1.1	4.7	4.7	
SC	17	17	61	62	1.6
SD	81	81	358	380	6.1
TN	69	65	250	233	-6.8
TX	320	337	1,552	1,684	8.5
UT	88	86	427	451	5.6
VT	143	141	656	636	-3.0
VA	105	103	428	415	-3.0
WA	245	237	1,433	1,382	-3.6
WV	13	13	48	49	2.1
WI	1,236	1,244	5,817	5,823	0.1
WY	5.0	6.8	18.5	31.3	69.2
US <sup>3</sup>	9,060	9,117	44,134	44,737	1.4

<sup>1</sup> Includes dry cows, excludes heifers not yet fresh.

<sup>2</sup> Excludes milk sucked by calves.

<sup>3</sup> May not add due to rounding.

## Reliability Statement

**Survey Procedures:** Primary data used to determine these estimates were obtained from a sample of producers. Individual States maintain a list of all known milk producers and information on the size of their herd. States use all known sources of producers to ensure that their lists are as complete as possible. Generally, all large producers and a sample of small producers are included in the survey. Questionnaires are mailed to producers near the end of the month to obtain data for the first day of the month. Additional reports are obtained by telephone, as needed, to supplement the mail response. Where feasible, States utilize state and federal administrative data, rather than conduct a monthly or quarterly survey, to estimate milk production. This eliminates duplication of data gathering by different government agencies. Indications of milk cow inventory are also obtained in the January and July Cattle Surveys.

**Estimation Procedures:** State offices prepare these estimates by using a combination of survey indications, historic trends, and any available administrative data. Individual State estimates are reviewed by the Agricultural Statistics Board for reasonableness.

**Revision Policy:** Milk production, rate per cow, and number of cows are subject to revision the following month for monthly States or the following quarter for the quarterly States. Normally, Federal Market Order sales are the main basis for revisions. However, data for all orders are not available in time for this revision. Estimates are again subject to revisions in February each year based on additional administrative data. In the event that additional changes are necessary, a third revision is possible in February the following year. Estimates are again reviewed after data from the five-year Census of Agriculture are available. No revisions are made after that date.

**Reliability:** Since all operations with dairy animals are not included in the sample, survey estimates are subject to sampling variability. Survey results are also subject to non-sampling errors such as omissions, duplications, and mistakes in reporting, recording, and processing the data. The effects of these errors cannot be measured directly. They are minimized through rigid quality controls in the data collection process and through a careful review of all reported data for consistency and reasonableness.

To assist users in evaluating the reliability of the estimates in this report, the "Root Mean Square Error" is shown for selected items on the next page. The "Root Mean Square Error" is a statistical measure based on past performance and is computed using the differences between first and final estimates. The "Root Mean Square Error" for milk cow inventory estimates over the past 10 July - September quarters is 0.3 percent. This means that chances are 2 out of 3 that the final July - September estimate will not be above or below the current estimate of 9.12 million head by more than 0.3 percent. Chances are 9 out of 10 that the difference will not exceed 0.5 percent.

**Reliability of July-September Milk Estimates <sup>1</sup>**

Item	Root Mean Square Error	90% Confidence Level		Difference Between First and Latest Estimates			Quarters	
				Average	Smallest	Largest	First Above Latest	First Below Latest
				Million Pounds	Million Pounds	Million Pounds	Number	Number
Milk Production	<i>Percent</i> 0.5	<i>Percent</i> 0.9	<i>Million Pounds</i> 403	<i>Million Pounds</i> 180	<i>Million Pounds</i> 62	<i>Million Pounds</i> 362	<i>Number</i> 7	<i>Number</i> 3
All Milk Cows	<i>Percent</i> 0.3	<i>Percent</i> 0.5	<i>1,000 Head</i> 46	<i>1,000 Head</i> 17	<i>1,000 Head</i> 2	<i>1,000 Head</i> 61	<i>Number</i> 6	<i>Number</i> 4

<sup>1</sup> Based on records for the past 10 July-September quarters.

**Information Contacts**

Listed below are the commodity specialists in the Livestock Branch of the National Agricultural Statistics Service to contact for additional information.

- Dan Kerestes, Chief, Livestock Branch ..... (202) 720-3570
- William Weaver, Head, Livestock Section ..... (202) 720-3570
  - Bruce Boess - Hogs and Pigs ..... (202) 720-3106
  - Shawn Clark - Dairy Products ..... (202) 690-3236
  - Jason Hardegree - Milk Production and Milk Cows ..... (202) 720-3278
  - Scott Hollis - Sheep & Lambs, Goats ..... (202) 720-4751
  - Mike Miller - Cattle, Cattle on Feed ..... (202) 720-3040
  - Katy Paulsen - Livestock Slaughter ..... (515) 284-4340
  - Charmaine Wilson - Dairy Products Prices ..... (202) 690-2168



## ACCESS TO REPORTS!!

---

For your convenience, there are several ways to obtain NASS reports, data products, and services:

### INTERNET ACCESS

All NASS reports are available free of charge on the worldwide Internet. For access, connect to the Internet and go to the NASS Home Page at: [www.nass.usda.gov](http://www.nass.usda.gov).

### E-MAIL SUBSCRIPTION

All NASS reports are available by subscription free of charge direct to your e-mail address. Starting with the NASS Home Page at [www.nass.usda.gov](http://www.nass.usda.gov), under the right navigation, *Receive reports by Email*, click on **National** or **State**. Follow the instructions on the screen.

-----

### PRINTED REPORTS OR DATA PRODUCTS

**CALL OUR TOLL-FREE ORDER DESK: 800-999-6779 (U.S. and Canada)**  
**Other areas, please call 703-605-6220      FAX: 703-605-6900**  
**(Visa, MasterCard, check, or money order acceptable for payment.)**

-----

### ASSISTANCE

For **assistance** with general agricultural statistics or further information about NASS or its products or services, contact the **Agricultural Statistics Hotline** at **800-727-9540**, 7:30 a.m. to 4:00 p.m. ET, or e-mail: [nass@nass.usda.gov](mailto:nass@nass.usda.gov).

The U.S. Department of Agriculture (USDA) prohibits discrimination in all its programs and activities on the basis of race, color, national origin, age, disability, and where applicable, sex, marital status, familial status, parental status, religion, sexual orientation, genetic information, political beliefs, reprisal, or because all or part of an individual's income is derived from any public assistance program. (Not all prohibited bases apply to all programs.) Persons with disabilities who require alternative means for communication of program information (Braille, large print, audiotape, etc.) should contact USDA's TARGET Center at (202) 720-2600 (voice and TDD).

To file a complaint of discrimination, write to USDA, Director, Office of Civil Rights, 1400 Independence Avenue, S.W., Washington, D.C. 20250-9410, or call (800) 795-3272 (voice) or (202) 720-6382 (TDD). USDA is an equal opportunity provider and employer.