



NASS

FACT FINDERS FOR AGRICULTURE
UNITED STATES DEPARTMENT OF AGRICULTURE

Washington, D.C.

Milk Production

Released January 18, 2007, by the National Agricultural Statistics Service (NASS), Agricultural Statistics Board, U.S. Department of Agriculture. For information on *Milk Production* call Jason Hardegree at 202-720-3278, office hours 7:30 a.m. to 4:00 p.m. ET.

December Milk Production Up 2.7 Percent

Milk production in the 23 major States during December totaled 14.0 billion pounds, up 2.7 percent from December 2005. November revised production, at 13.3 billion pounds, was up 2.6 percent from November 2005. The November revision represented an increase of 13 million pounds or 0.1 percent from last month's preliminary production estimate.

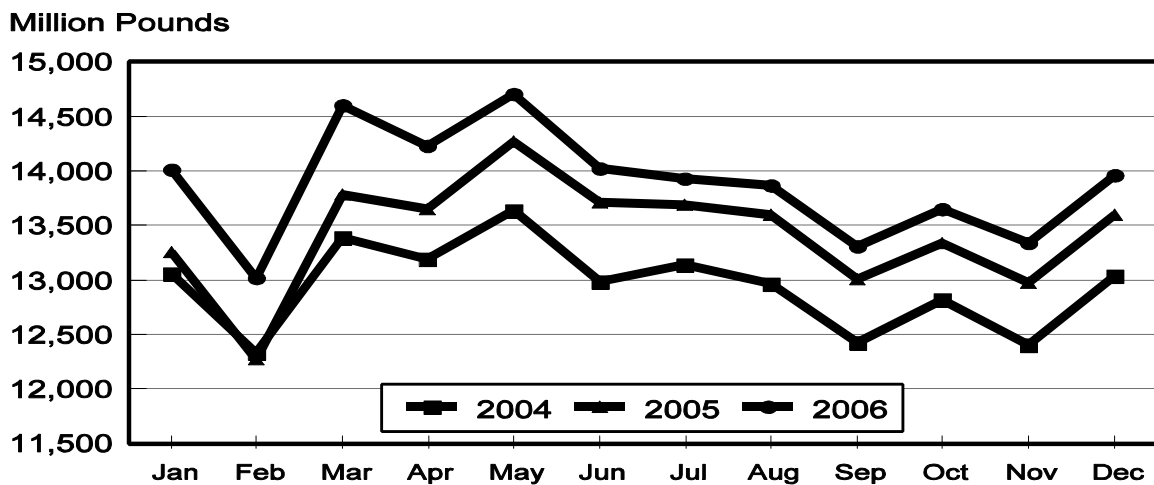
Production per cow in the 23 major States averaged 1,689 pounds for December, 26 pounds above December 2005.

The number of milk cows on farms in the 23 major States was 8.27 million head, 86,000 head more than December 2005, and 14,000 head more than November 2006.

October - December Milk Production Up 2.2 Percent

Milk production in the U.S. during the October - December quarter totaled 44.6 billion pounds, up 2.2 percent from the October - December quarter last year. The average number of milk cows in the U.S. during the quarter was 9.12 million head, 56,000 head more than the same period last year.

Monthly Milk Production 23 States



Milk Cows and Production: By Quarter, United States, 2005-2006 ¹

Quarter	Milk Cows ²		Milk Per Cow ³		Milk Production ³		
	2005	2006	2005	2006	2005	2006	Change From 2005
	<i>1,000 Head</i>	<i>1,000 Head</i>	<i>Pounds</i>	<i>Pounds</i>	<i>Million Pounds</i>	<i>Million Pounds</i>	<i>Percent</i>
Jan-Mar	9,002	9,094	4,816	5,009	43,350	45,553	5.1
Apr-Jun	9,041	9,133	5,069	5,136	45,831	46,908	2.3
Jul-Sep	9,060	9,117	4,871	4,907	44,134	44,739	1.4
Oct-Dec	9,060	9,116	4,821	4,897	43,674	44,639	2.2
Annual	9,041	9,115	19,576	19,949	176,989	181,839	2.7

¹ May not add due to rounding.

² Includes dry cows, excludes heifers not yet fresh.

³ Excludes milk sucked by calves.

Milk Cows and Production: By Month, 23 Selected States, 2005-2006 ¹

Month	Milk Cows ²		Milk Per Cow ³		Milk Production ³		
	2005	2006	2005	2006	2005	2006	Change from 2005
	<i>1,000 Head</i>	<i>1,000 Head</i>	<i>Pounds</i>	<i>Pounds</i>	<i>Million Pounds</i>	<i>Million Pounds</i>	<i>Percent</i>
Jan	8,087	8,195	1,643	1,710	13,287	14,014	5.5
Feb	8,084	8,206	1,522	1,587	12,301	13,022	5.9
Mar	8,099	8,228	1,707	1,775	13,825	14,604	5.6
Apr	8,117	8,240	1,690	1,727	13,717	14,228	3.7
May	8,131	8,257	1,760	1,780	14,311	14,700	2.7
Jun	8,138	8,269	1,690	1,695	13,755	14,017	1.9
Jul	8,151	8,259	1,683	1,686	13,715	13,925	1.5
Aug	8,162	8,252	1,671	1,680	13,640	13,861	1.6
Sep	8,167	8,244	1,599	1,615	13,057	13,312	2.0
Oct	8,168	8,245	1,637	1,656	13,373	13,652	2.1
Nov	8,167	8,251	1,592	1,617	13,002	13,341	2.6
Dec	8,179	8,265	1,663	1,689	13,599	13,963	2.7
Annual	8,138	8,243	19,857	20,216	161,582	166,639	3.1

¹ 2006 revised.

² Includes dry cows, excludes heifers not yet fresh.

³ Excludes milk sucked by calves.

Estimated Milk Cows and Production: By Month, United States, 2005-2006 ¹

Month	Milk Cows ²		Milk Per Cow ³		Milk Production ³		
	2005	2006	2005	2006	2005	2006	Change From 2005
	<i>1,000 Head</i>	<i>1,000 Head</i>	<i>Pounds</i>	<i>Pounds</i>	<i>Million Pounds</i>	<i>Million Pounds</i>	<i>Percent</i>
Jan	9,000	9,079	1,624	1,689	14,614	15,333	4.9
Feb	8,996	9,091	1,504	1,567	13,530	14,248	5.3
Mar	9,009	9,113	1,688	1,753	15,206	15,972	5.0
Apr	9,030	9,120	1,666	1,704	15,047	15,541	3.3
May	9,042	9,135	1,735	1,758	15,697	16,056	2.3
Jun	9,050	9,145	1,668	1,674	15,087	15,311	1.5
Jul	9,053	9,127	1,656	1,661	14,978	15,159	1.2
Aug	9,060	9,116	1,643	1,655	14,896	15,088	1.3
Sep	9,066	9,107	1,572	1,591	14,260	14,492	1.6
Oct	9,060	9,108	1,613	1,634	14,611	14,880	1.8
Nov	9,056	9,113	1,569	1,596	14,209	14,542	2.3
Dec	9,063	9,126	1,639	1,667	14,854	15,217	2.4
Annual	9,041	9,115	19,576	19,949	176,989	181,839	2.7

¹ 2006 revised.

² Includes dry cows, excludes heifers not yet fresh.

³ Excludes milk sucked by calves.

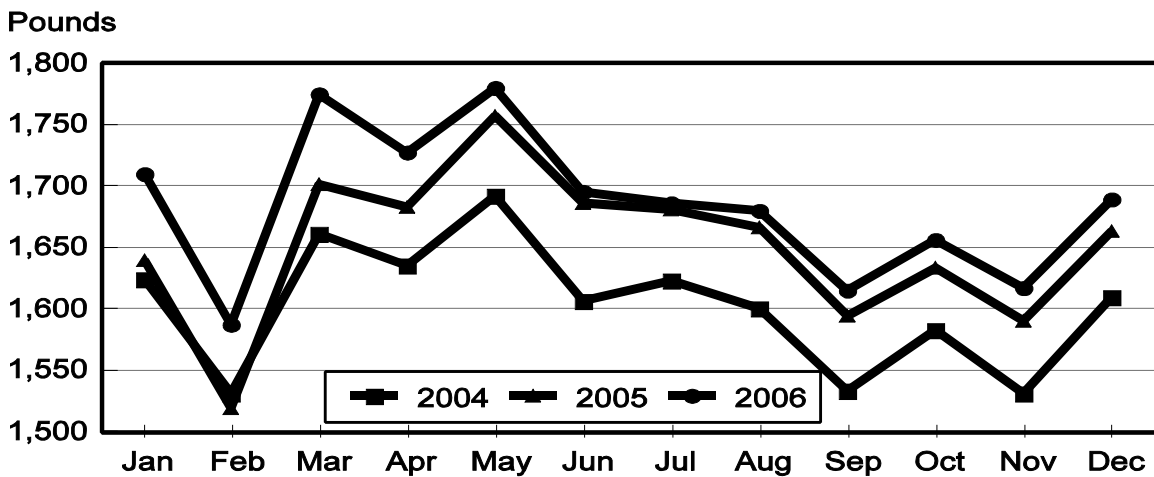
Milk Cows and Production: By State, December 2005-2006

State	Milk Cows ¹		Milk Per Cow ²		Milk Production ²		
	2005	2006	2005	2006	2005	2006	Change From 2005
	<i>1,000 Head</i>	<i>1,000 Head</i>	<i>Pounds</i>	<i>Pounds</i>	<i>Million Pounds</i>	<i>Million Pounds</i>	<i>Percent</i>
AZ	163	168	1,965	1,995	320	335	4.7
CA	1,771	1,785	1,795	1,850	3,179	3,302	3.9
CO	105	114	1,890	1,910	198	218	10.1
FL	135	130	1,360	1,360	184	177	-3.8
ID	472	500	1,830	1,820	864	910	5.3
IL	104	103	1,570	1,620	163	167	2.5
IN	158	166	1,715	1,690	271	281	3.7
IA	200	205	1,725	1,725	345	354	2.6
KS	111	111	1,730	1,750	192	194	1.0
KY	102	94	1,110	1,145	113	108	-4.4
MI	312	324	1,820	1,860	568	603	6.2
MN	445	455	1,545	1,575	688	717	4.2
MO	114	115	1,380	1,300	157	150	-4.5
NM	339	360	1,780	1,690	603	608	0.8
NY	650	629	1,545	1,565	1,004	984	-2.0
OH	273	274	1,430	1,485	390	407	4.4
OR	121	116	1,490	1,580	180	183	1.7
PA	557	549	1,580	1,620	880	889	1.0
TX	324	345	1,720	1,770	557	611	9.7
VT	143	140	1,535	1,535	220	215	-2.3
VA	104	100	1,440	1,480	150	148	-1.3
WA	237	235	1,910	1,890	453	444	-2.0
WI	1,239	1,247	1,550	1,570	1,920	1,958	2.0
23-State Total	8,179	8,265	1,663	1,689	13,599	13,963	2.7

¹ Includes dry cows, excludes heifers not yet fresh.

² Excludes milk sucked by calves.

**Monthly Milk per Cow
23 States**



Milk Cows and Production: By State, November 2005-2006 ¹

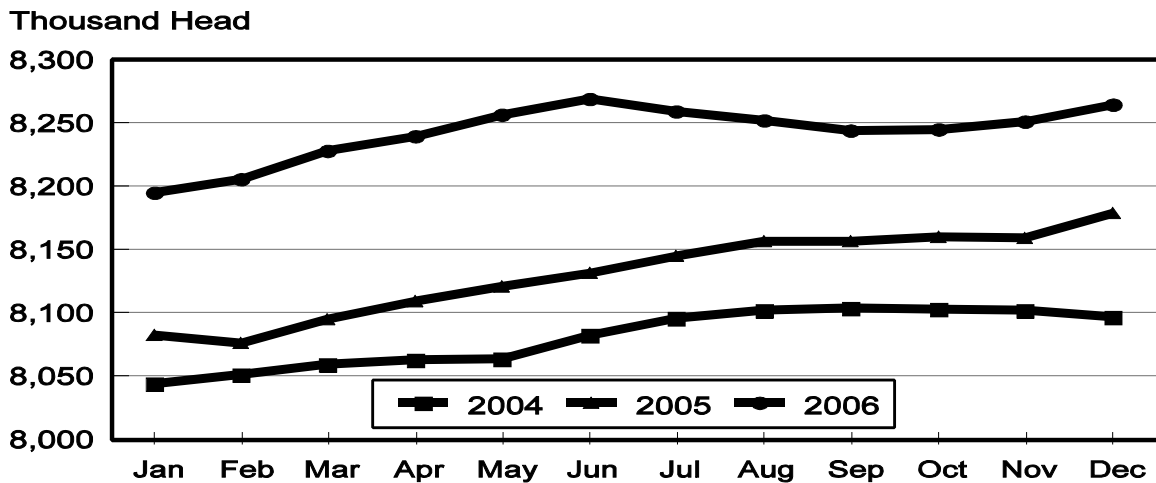
State	Milk Cows ²		Milk per Cow ³		Milk Production ³		
	2005	2006	2005	2006	2005	2006	Change From 2005
	<i>1,000 Head</i>	<i>1,000 Head</i>	<i>Pounds</i>	<i>Pounds</i>	<i>Million Pounds</i>	<i>Million Pounds</i>	<i>Percent</i>
AZ	161	167	1,850	1,830	298	306	2.7
CA	1,770	1,781	1,725	1,760	3,053	3,135	2.7
CO	105	113	1,820	1,870	191	211	10.5
FL	136	130	1,220	1,240	166	161	-3.0
ID	471	497	1,790	1,790	843	890	5.6
IL	104	103	1,480	1,510	154	156	1.3
IN	157	166	1,650	1,610	259	267	3.1
IA	199	200	1,640	1,650	326	330	1.2
KS	112	112	1,650	1,660	185	186	0.5
KY	102	95	1,030	1,060	105	101	-3.8
MI	312	323	1,745	1,790	544	578	6.3
MN	445	450	1,455	1,495	647	673	4.0
MO	114	115	1,280	1,250	146	144	-1.4
NM	337	360	1,720	1,650	580	594	2.4
NY	648	633	1,485	1,535	962	972	1.0
OH	271	274	1,410	1,440	382	395	3.4
OR	121	117	1,470	1,530	178	179	0.6
PA	556	550	1,500	1,560	834	858	2.9
TX	321	341	1,630	1,680	523	573	9.6
VT	142	140	1,465	1,445	208	202	-2.9
VA	105	102	1,370	1,365	144	139	-3.5
WA	240	235	1,840	1,815	442	427	-3.4
WI	1,238	1,247	1,480	1,495	1,832	1,864	1.7
23-State Total	8,167	8,251	1,592	1,617	13,002	13,341	2.6

¹ 2005 and 2006 revised.

² Includes dry cows, excludes heifers not yet fresh.

³ Excludes milk sucked by calves.

Monthly Milk Cows 23 States



**Milk Cows and Production: By State and United States,
Revised July-September, 2005-2006**

State	Jul-Sep Milk Cows ¹		Jul-Sep Milk Production ²		Change From 2005
	2005	2006	2005	2006	
	<i>1,000 Head</i>	<i>1,000 Head</i>	<i>Million Pounds</i>	<i>Million Pounds</i>	<i>Percent</i>
AL	16	14	47	41	-12.8
AK	1.1	0.8	3.4	2.7	-20.6
AZ	161	167	865	875	1.2
AR	22	20	73	61	-16.4
CA	1,759	1,771	9,367	9,554	2.0
CO	105	112	612	659	7.7
CT	20	19	92	86	-6.5
DE	7.5	7	32.3	29	-10.2
FL	135	130	493	472	-4.3
GA	81	76	310	312	0.6
HI	5.3	4.2	17.4	14	-19.5
ID	466	495	2,678	2,858	6.7
IL	104	103	473	478	1.1
IN	156	165	778	808	3.9
IA	195	200	1,001	985	-1.6
KS	112	113	559	575	2.9
KY	106	96	325	295	-9.2
LA	34	31	88	80	-9.1
ME	33	32	151	146	-3.3
MD	72	70	281	266	-5.3
MA	16	15.5	72	68	-5.6
MI	313	320	1,702	1,759	3.3
MN	452	450	2,013	2,050	1.8
MS	25	22	81	70	-13.6
MO	116	115	448	418	-6.7
MT	19	18	95	87	-8.4
NE	60	61	263	275	4.6
NV	25	27	137	139	1.5
NH	16	15	74	71	-4.1
NJ	12	11	47	41	-12.8
NM	331	361	1,778	1,919	7.9
NY	648	643	3,053	3,049	-0.1
NC	54	50	248	217	-12.5
ND	32	31	132	119	-9.8
OH	270	274	1,177	1,214	3.1
OK	75	72	311	300	-3.5
OR	121	120	585	566	-3.2
PA	561	554	2,619	2,626	0.3
RI	1.1	1.1	4.7	4.7	
SC	17	17	61	62	1.6
SD	81	81	358	380	6.1
TN	69	65	250	233	-6.8
TX	320	337	1,552	1,684	8.5
UT	88	86	427	456	6.8
VT	143	141	656	634	-3.4
VA	105	103	428	415	-3.0
WA	245	237	1,433	1,382	-3.6
WV	13	13	48	49	2.1
WI	1,236	1,244	5,817	5,823	0.1
WY	5.0	6.8	18.5	31.3	69.2
US ³	9,060	9,117	44,134	44,739	1.4

¹ Includes dry cows, excludes heifers not yet fresh.

² Excludes milk sucked by calves.

³ May not add due to rounding.

**Milk Cows and Production: By State and United States,
Preliminary October-December, 2005-2006**

State	Oct-Dec Milk Cows ¹		Oct-Dec Milk Production ²		Change From 2005
	2005	2006	2005	2006	
	<i>1,000 Head</i>	<i>1,000 Head</i>	<i>Million Pounds</i>	<i>Million Pounds</i>	<i>Percent</i>
AL	15	13	50	46	-8.0
AK	0.9	0.7	2.7	2.2	-18.5
AZ	162	167	914	942	3.1
AR	21	19	67	62	-7.5
CA	1,769	1,781	9,383	9,660	3.0
CO	105	113	587	644	9.7
CT	20	19	92	89	-3.3
DE	7.1	7	29.8	30	0.7
FL	135	130	503	491	-2.4
GA	79	75	327	330	0.9
HI	5.1	4	15.5	12.2	-21.3
ID	471	498	2,586	2,729	5.5
IL	104	103	474	483	1.9
IN	157	166	791	819	3.5
IA	199	202	1,006	1,018	1.2
KS	112	112	565	568	0.5
KY	102	95	325	309	-4.9
LA	32	30	93	86	-7.5
ME	32	32	142	141	-0.7
MD	71	70	281	270	-3.9
MA	16	15.5	69	65	-5.8
MI	312	323	1,672	1,775	6.2
MN	447	452	1,999	2,070	3.6
MS	24	22	82	76	-7.3
MO	114	115	449	437	-2.7
MT	19	18	93	85	-8.6
NE	60	61	267	274	2.6
NV	26	27	140	139	-0.7
NH	16	14.5	74	70	-5.4
NJ	12	11	46	41	-10.9
NM	337	360	1,773	1,805	1.8
NY	649	633	2,974	2,961	-0.4
NC	53	49	231	220	-4.8
ND	33	31	132	118	-10.6
OH	271	274	1,158	1,202	3.8
OK	75	70	293	290	-1.0
OR	121	117	547	547	
PA	557	550	2,579	2,630	2.0
RI	1.0	1.1	4.4	4.5	2.3
SC	17	17	69	67	-2.9
SD	81	81	358	379	5.9
TN	69	66	257	248	-3.5
TX	322	341	1,594	1,745	9.5
UT	85	86	413	458	10.9
VT	142	140	642	625	-2.6
VA	105	102	438	427	-2.5
WA	240	235	1,363	1,322	-3.0
WV	13	13	49	50	2.0
WI	1,238	1,247	5,652	5,747	1.7
WY	6.2	6.9	22.9	29.7	29.7
US ³	9,060	9,116	43,674	44,639	2.2

¹ Includes dry cows, excludes heifers not yet fresh.

² Excludes milk sucked by calves.

³ May not add due to rounding.

Reliability Statement

Survey Procedures: Primary data used to determine these estimates were obtained from a sample of producers. Individual States maintain a list of all known milk producers and information on the size of their herd. States use all known sources of producers to ensure that their lists are as complete as possible. Generally, all large producers and a sample of small producers are included in the survey. Questionnaires are mailed to producers near the end of the month to obtain data for the first day of the month. Additional reports are obtained by telephone, as needed, to supplement the mail response. Where feasible, States utilize state and federal administrative data, rather than conduct a monthly or quarterly survey, to estimate milk production. This eliminates duplication of data gathering by different government agencies. Indications of milk cow inventory are also obtained in the January and July Cattle Surveys.

Estimation Procedures: State offices prepare these estimates by using a combination of survey indications, historic trends, and any available administrative data. Individual State estimates are reviewed by the Agricultural Statistics Board for reasonableness.

Revision Policy: Milk production, rate per cow, and number of cows are subject to revision the following month for monthly States or the following quarter for the quarterly States. Normally, Federal Market Order sales are the main basis for revisions. However, data for all orders are not available in time for this revision. Estimates are again subject to revisions in February each year based on additional administrative data. In the event that additional changes are necessary, a third revision is possible in February the following year. Estimates are again reviewed after data from the five-year Census of Agriculture are available. No revisions are made after that date.

Reliability: Since all operations with dairy animals are not included in the sample, survey estimates are subject to sampling variability. Survey results are also subject to non-sampling errors such as omissions, duplications, and mistakes in reporting, recording, and processing the data. The effects of these errors cannot be measured directly. They are minimized through rigid quality controls in the data collection process and through a careful review of all reported data for consistency and reasonableness.

To assist users in evaluating the reliability of the estimates in this report, the "Root Mean Square Error" is shown for selected items on the next page. The "Root Mean Square Error" is a statistical measure based on past performance and is computed using the differences between first and final estimates. The "Root Mean Square Error" for milk cow inventory estimates over the past 10 October - December quarters is 0.3 percent. This means that chances are 2 out of 3 that the final October - December estimate will not be above or below the current estimate of 9.12 million head by more than 0.3 percent. Chances are 9 out of 10 that the difference will not exceed 0.6 percent.

Reliability of October-December Milk Estimates ¹

Item	Root Mean Square Error	90% Confidence Level		Difference Between First and Latest Estimates			Quarters	
				Average	Smallest	Largest	First Above Latest	First Below Latest
				Million Pounds	Million Pounds	Million Pounds	Number	Number
Milk Production	<i>Percent</i> 0.4	<i>Percent</i> 0.7	<i>Million Pounds</i> 312	<i>Million Pounds</i> 130	<i>Million Pounds</i> 0	<i>Million Pounds</i> 265	<i>Number</i> 5	<i>Number</i> 4
All Milk Cows	<i>Percent</i> 0.3	<i>Percent</i> 0.6	<i>1,000 Head</i> 55	<i>1,000 Head</i> 17	<i>1,000 Head</i> 0	<i>1,000 Head</i> 73	<i>Number</i> 6	<i>Number</i> 3

¹ Based on records for the past 10 October-December quarters.

Information Contacts

Listed below are the commodity specialists in the Livestock Branch of the National Agricultural Statistics Service to contact for additional information.

- Dan Kerestes, Chief, Livestock Branch (202) 720-3570
- William Weaver, Head, Livestock Section (202) 720-3570
 - Bruce Boess - Hogs and Pigs (202) 720-3106
 - Shawn Clark - Dairy Products (202) 690-3236
 - Jason Hardegree - Milk Production and Milk Cows (202) 720-3278
 - Scott Hollis - Sheep & Lambs, Goats (202) 720-4751
 - Mike Miller - Cattle, Cattle on Feed (202) 720-3040
 - Katy Paulsen - Livestock Slaughter (515) 284-4340
 - Charmaine Wilson - Dairy Products Prices (202) 690-2168

ACCESS TO REPORTS!!

For your convenience, there are several ways to obtain NASS reports, data products, and services:

INTERNET ACCESS

All NASS reports are available free of charge on the worldwide Internet. For access, connect to the Internet and go to the NASS Home Page at: www.nass.usda.gov.

E-MAIL SUBSCRIPTION

All NASS reports are available by subscription free of charge direct to your e-mail address. Starting with the NASS Home Page at www.nass.usda.gov, under the right navigation, *Receive reports by Email*, click on **National** or **State**. Follow the instructions on the screen.

PRINTED REPORTS OR DATA PRODUCTS

CALL OUR TOLL-FREE ORDER DESK: 800-999-6779 (U.S. and Canada)
Other areas, please call 703-605-6220 FAX: 703-605-6900
(Visa, MasterCard, check, or money order acceptable for payment.)

ASSISTANCE

For **assistance** with general agricultural statistics or further information about NASS or its products or services, contact the **Agricultural Statistics Hotline** at **800-727-9540**, 7:30 a.m. to 4:00 p.m. ET, or e-mail: nass@nass.usda.gov.

The U.S. Department of Agriculture (USDA) prohibits discrimination in all its programs and activities on the basis of race, color, national origin, age, disability, and where applicable, sex, marital status, familial status, parental status, religion, sexual orientation, genetic information, political beliefs, reprisal, or because all or a part of an individual's income is derived from any public assistance program. (Not all prohibited bases apply to all programs.) Persons with disabilities who require alternative means for communication of program information (Braille, large print, audiotape, etc.) should contact USDA's TARGET Center at (202) 720-2600 (voice and TDD).

To file a complaint of discrimination, write to USDA, Director, Office of Civil Rights, 1400 Independence Avenue, S.W., Washington, D.C. 20250-9410, or call (800) 795-3272 (voice) or (202) 720-6382 (TDD). USDA is an equal opportunity provider and employer.