



NASS

FACT FINDERS FOR AGRICULTURE
UNITED STATES DEPARTMENT OF AGRICULTURE

Washington, D.C.

Milk Production

Released February 16, 2007, by the National Agricultural Statistics Service (NASS), Agricultural Statistics Board, U.S. Department of Agriculture. For information on *Milk Production* call Jason Hardegree at 202-720-3278, office hours 7:30 a.m. to 4:00 p.m. ET.

January Milk Production Up 1.4 Percent

Milk production in the 23 major States during January totaled 14.2 billion pounds, up 1.4 percent from January 2006. December production, at 14.0 billion pounds, was up 2.8 percent from December 2005.

Production per cow in the 23 major States averaged 1,719 pounds for January, 8 pounds above January 2006.

The number of cows on farms in the 23 major States was 8.28 million head, 81,000 head more than January 2006, and 3,000 head more than December 2006.

2006 Annual Milk Production Up 2.8 Percent from 2005

The annual production of milk for the U.S. during 2006 was 182 billion pounds, 2.8 percent above 2005. Revisions to 2005 production decreased the annual total 60 million pounds. Revised 2006 production was down slightly from last month's publication.

Production per cow in the U.S. averaged 19,951 pounds for 2006, 386 pounds above 2005. The average annual rate of milk production per cow has increased 18.3 percent from 1997.

The average number of milk cows on farms in the U.S. during 2006 was 9.11 million head, up 0.8 percent from 2005. The average number of milk cows was revised up 2,000 head for 2005, and down 3,000 head for 2006.

Special Note

Included in this issue are monthly, quarterly, and annual revisions, by State, U.S., and Puerto Rico for 2005-2006.

This issue also contains the Number of Milk Cow Operations and Licensed Dairy Herds, by State, U.S., and Puerto Rico for 2005-2006.

Milk Cows and Production: By Quarter, United States, 2006-2007 ¹

Quarter	Milk Cows ²		Milk Per Cow ³		Milk Production ³		
	2006	2007	2006	2007	2006	2007	Change From 2006
	<i>1,000 Head</i>	<i>1,000 Head</i>	<i>Pounds</i>	<i>Pounds</i>	<i>Million Pounds</i>	<i>Million Pounds</i>	<i>Percent</i>
Jan-Mar	9,092		5,010		45,547		
Apr-Jun	9,128		5,141		46,930		
Jul-Sep	9,113		4,906		44,710		
Oct-Dec	9,115		4,894		44,611		
Annual	9,112		19,951		181,798		

¹ May not add due to rounding.

² Includes dry cows, excludes heifers not yet fresh.

³ Excludes milk sucked by calves.

Milk Cows and Production: By Month, 23 Selected States, 2006-2007 ¹

Month	Milk Cows ²		Milk Per Cow ³		Milk Production ³		
	2006	2007	2006	2007	2006	2007	Change from 2006
	<i>1,000 Head</i>	<i>1,000 Head</i>	<i>Pounds</i>	<i>Pounds</i>	<i>Million Pounds</i>	<i>Million Pounds</i>	<i>Percent</i>
Jan	8,198	8,279	1,711	1,719	14,027	14,228	1.4
Feb	8,206		1,586		13,018		
Mar	8,224		1,775		14,599		
Apr	8,240		1,726		14,222		
May	8,257		1,782		14,712		
Jun	8,269		1,697		14,033		
Jul	8,258		1,688		13,937		
Aug	8,255		1,676		13,838		
Sep	8,251		1,613		13,307		
Oct	8,255		1,652		13,637		
Nov	8,260		1,614		13,332		
Dec	8,276		1,690		13,983		
Annual	8,246		20,210		166,645		

¹ 2006 revised.

² Includes dry cows, excludes heifers not yet fresh.

³ Excludes milk sucked by calves.

Estimated Milk Cows and Production: By Month, United States, 2006-2007 ¹

Month	Milk Cows ²		Milk Per Cow ³		Milk Production ³		
	2006	2007	2006	2007	2006	2007	Change From 2006
	<i>1,000 Head</i>	<i>1,000 Head</i>	<i>Pounds</i>	<i>Pounds</i>	<i>Million Pounds</i>	<i>Million Pounds</i>	<i>Percent</i>
Jan	9,081	9,128	1,690	1,699	15,343	15,507	1.1
Feb	9,088		1,567		14,238		
Mar	9,106		1,753		15,966		
Apr	9,116		1,705		15,538		
May	9,129		1,760		16,068		
Jun	9,139		1,676		15,324		
Jul	9,119		1,663		15,168		
Aug	9,114		1,653		15,061		
Sep	9,107		1,590		14,481		
Oct	9,107		1,631		14,857		
Nov	9,111		1,594		14,523		
Dec	9,126		1,669		15,231		
Annual	9,112		19,951		181,798		

¹ 2006 revised.

² Includes dry cows, excludes heifers not yet fresh.

³ Excludes milk sucked by calves.

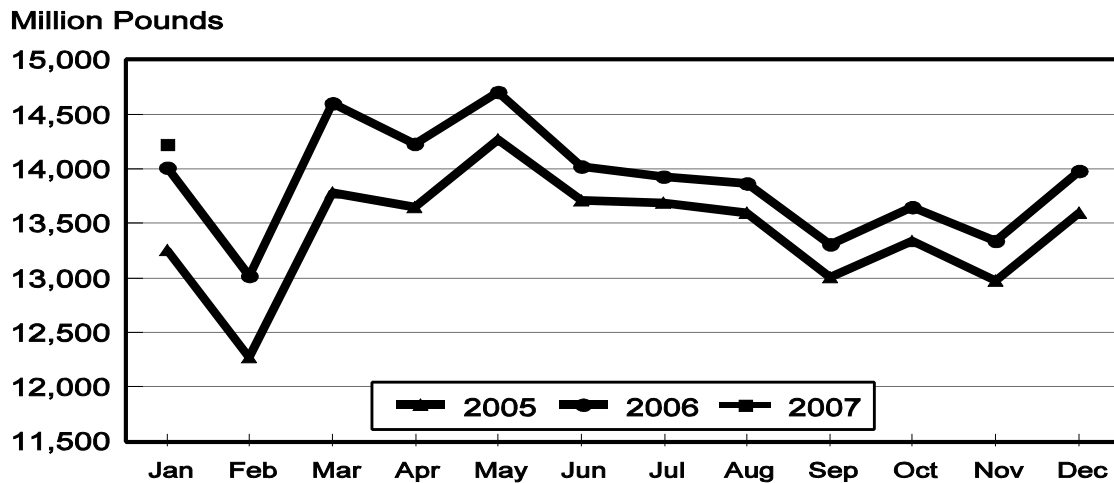
Milk Cows and Production: By State, January 2006-2007

State	Milk Cows ¹		Milk Per Cow ²		Milk Production ²		
	2006	2007	2006	2007	2006	2007	Change From 2006
	<i>1,000 Head</i>	<i>1,000 Head</i>	<i>Pounds</i>	<i>Pounds</i>	<i>Million Pounds</i>	<i>Million Pounds</i>	<i>Percent</i>
AZ	171	175	2,045	1,995	350	349	-0.3
CA	1,776	1,791	1,825	1,880	3,241	3,367	3.9
CO	106	115	1,935	1,840	205	212	3.4
FL	134	130	1,485	1,450	199	189	-5.0
ID	473	501	1,830	1,830	866	917	5.9
IL	104	103	1,630	1,645	170	169	-0.6
IN	161	165	1,720	1,720	277	284	2.5
IA	200	210	1,750	1,720	350	361	3.1
KS	111	110	1,790	1,690	199	186	-6.5
KY	101	93	1,150	1,200	116	112	-3.4
MI	314	325	1,890	1,925	593	626	5.6
MN	445	455	1,605	1,625	714	739	3.5
MO	114	115	1,440	1,300	164	150	-8.5
NM	342	358	1,845	1,690	631	605	-4.1
NY	647	628	1,595	1,610	1,032	1,011	-2.0
OH	273	275	1,490	1,520	407	418	2.7
OR	120	114	1,560	1,580	187	180	-3.7
PA	557	549	1,650	1,640	919	900	-2.1
TX	326	347	1,840	1,780	600	618	3.0
VT	143	140	1,580	1,560	226	218	-3.5
VA	103	100	1,510	1,550	156	155	-0.6
WA	237	235	1,940	1,895	460	445	-3.3
WI	1,240	1,245	1,585	1,620	1,965	2,017	2.6
23-State Total	8,198	8,279	1,711	1,719	14,027	14,228	1.4

¹ Includes dry cows, excludes heifers not yet fresh.

² Excludes milk sucked by calves.

**Monthly Milk Production
23 States**



Milk Cows and Production: By State, December 2005-2006 ¹

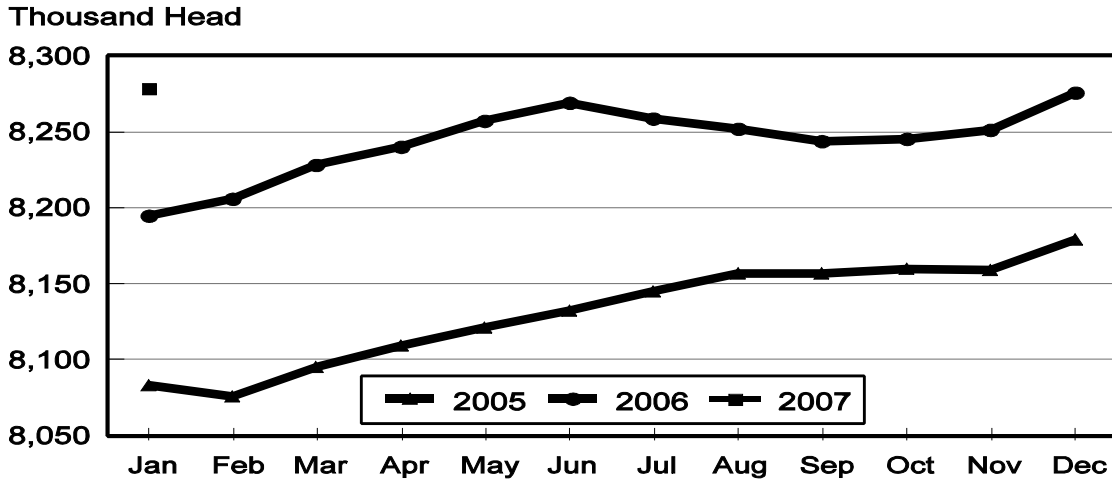
State	Milk Cows ²		Milk per Cow ³		Milk Production ³		
	2005	2006	2005	2006	2005	2006	Change From 2005
	<i>1,000 Head</i>	<i>1,000 Head</i>	<i>Pounds</i>	<i>Pounds</i>	<i>Million Pounds</i>	<i>Million Pounds</i>	<i>Percent</i>
AZ	169	175	1,895	1,915	320	335	4.7
CA	1,771	1,787	1,795	1,845	3,179	3,297	3.7
CO	105	114	1,890	1,910	198	218	10.1
FL	135	130	1,360	1,360	184	177	-3.8
ID	472	500	1,830	1,820	864	910	5.3
IL	104	103	1,570	1,620	163	167	2.5
IN	158	166	1,685	1,690	266	281	5.6
IA	200	209	1,725	1,700	345	355	2.9
KS	111	111	1,730	1,750	192	194	1.0
KY	102	94	1,100	1,120	112	105	-6.3
MI	314	324	1,825	1,880	573	609	6.3
MN	445	455	1,545	1,575	688	717	4.2
MO	114	115	1,380	1,300	157	150	-4.5
NM	339	360	1,780	1,690	603	608	0.8
NY	650	628	1,545	1,580	1,004	992	-1.2
OH	273	274	1,430	1,485	390	407	4.4
OR	121	116	1,490	1,520	180	176	-2.2
PA	557	549	1,580	1,620	880	889	1.0
TX	324	346	1,720	1,765	557	611	9.7
VT	143	140	1,535	1,520	220	213	-3.2
VA	104	100	1,440	1,480	150	148	-1.3
WA	237	235	1,910	1,890	453	444	-2.0
WI	1,239	1,245	1,550	1,590	1,920	1,980	3.1
23-State Total	8,187	8,276	1,661	1,690	13,598	13,983	2.8

¹ 2005 and 2006 revised.

² Includes dry cows, excludes heifers not yet fresh.

³ Excludes milk sucked by calves.

**Monthly Milk Cows
23 States**



Milk Cows and Production: United States, 1997-2006 ¹

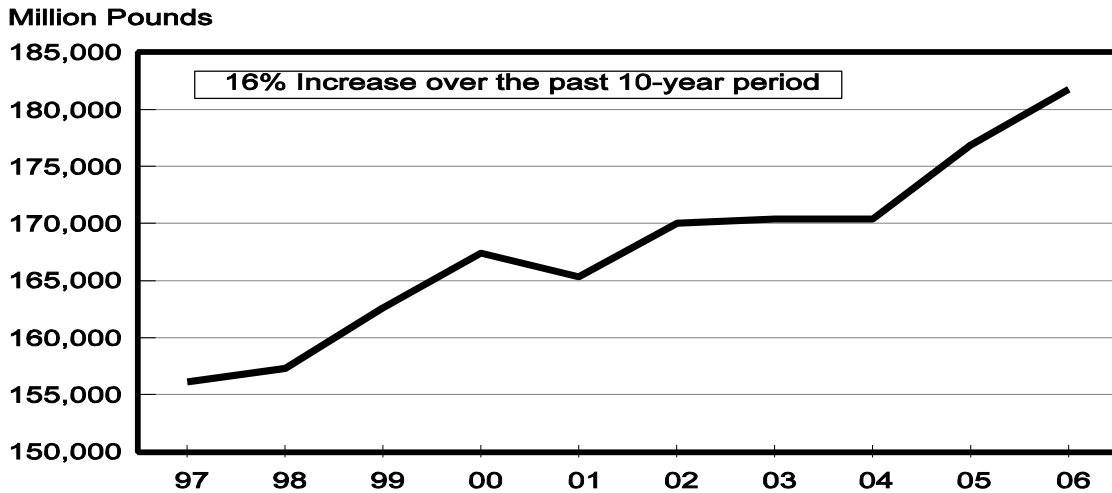
Year	Milk Cows ² <i>1,000 Head</i>	Production per Cow ³		Milk Production ³
		Milk <i>Pounds</i>		Total <i>Million Pounds</i>
1997	9,252	16,871	156,091	
1998	9,151	17,185	157,262	
1999	9,153	17,763	162,589	
2000	9,199	18,197	167,393	
2001	9,103	18,162	165,332	
2002	9,139	18,608	170,063	
2003	9,083	18,760	170,394	
2004	9,012	18,967	170,934	
2005	9,043	19,565	176,929	
2006	9,112	19,951	181,798	

¹ May not add due to rounding.

² Average number during year, excluding heifers not yet fresh.

³ Excludes milk sucked by calves.

**Milk Production, 1997-2006
United States**



Milk Cows and Production: By State, United States, and Puerto Rico, 2005-2006

State	Milk Cows ¹		Milk Per Cow ²		Milk Production ²		Change From 2005
	2005	2006	2005	2006	2005	2006	
	<i>1,000 Head</i>	<i>1,000 Head</i>	<i>Pounds</i>	<i>Pounds</i>	<i>Million Pounds</i>	<i>Million Pounds</i>	
AL	16	14	14,000	14,500	224	203	-9.4
AK	1.1	0.8	12,273	12,250	13.5	9.8	-27.4
AZ	165	173	22,679	22,855	3,742	3,954	5.7
AR	22	20	13,545	13,250	298	265	-11.1
CA	1,755	1,780	21,404	21,815	37,564	38,830	3.4
CO	104	110	22,577	23,155	2,348	2,547	8.5
CT	20	19	19,200	19,316	384	367	-4.4
DE	7.4	7.0	17,662	17,429	130.7	122.0	-6.7
FL	137	132	16,591	16,417	2,273	2,167	-4.7
GA	81	77	17,259	18,234	1,398	1,404	0.4
HI	5.4	4.3	12,889	13,256	69.6	57.0	-18.1
ID	455	488	22,332	22,326	10,161	10,895	7.2
IL	104	103	18,827	19,204	1,958	1,978	1.0
IN	156	165	20,295	19,994	3,166	3,299	4.2
IA	195	205	20,641	20,146	4,025	4,130	2.6
KS	111	112	20,505	20,920	2,276	2,343	2.9
KY	106	98	12,896	13,276	1,367	1,301	-4.8
LA	35	32	12,400	12,375	434	396	-8.8
ME	33	32	18,030	17,938	595	574	-3.5
MD	71	64	15,986	17,078	1,135	1,093	-3.7
MA	17	16	17,059	17,375	290	278	-4.1
MI	312	320	21,635	22,188	6,750	7,100	5.2
MN	453	450	18,091	18,587	8,195	8,364	2.1
MS	25	23	15,280	14,826	382	341	-10.7
MO	117	115	16,026	16,000	1,875	1,840	-1.9
MT	19	19	19,579	18,632	372	354	-4.8
NE	60	61	17,950	18,328	1,077	1,118	3.8
NV	25	27	21,680	20,667	542	558	3.0
NH	16	15	18,875	19,533	302	293	-3.0
NJ	12	11	16,000	16,182	192	178	-7.3
NM	328	355	21,192	21,515	6,951	7,638	9.9
NY	648	638	18,639	18,879	12,078	12,045	-0.3
NC	54	51	18,741	18,510	1,012	944	-6.7
ND	33	32	14,182	14,688	468	470	0.4
OH	270	274	17,567	17,737	4,743	4,860	2.5
OK	75	73	16,480	16,630	1,236	1,214	-1.8
OR	121	118	18,876	19,000	2,284	2,242	-1.8
PA	561	554	18,722	19,390	10,503	10,742	2.3
RI	1.1	1.1	17,000	17,273	18.7	19.0	1.6
SC	18	17	16,000	16,353	288	278	-3.5
SD	81	81	17,741	18,580	1,437	1,505	4.7
TN	70	67	15,743	15,657	1,102	1,049	-4.8
TX	320	335	20,131	21,328	6,442	7,145	10.9
UT	88	86	18,875	20,291	1,661	1,745	5.1
VT	143	141	18,469	18,383	2,641	2,592	-1.9
VA	105	102	16,990	17,363	1,784	1,771	-0.7
WA	241	237	23,270	23,055	5,608	5,464	-2.6
WV	13	13	14,923	15,385	194	200	3.1
WI	1,236	1,243	18,500	18,824	22,866	23,398	2.3
WY	4.9	6.7	14,878	17,612	72.9	118.0	61.9
US ³	9,043	9,112	19,565	19,951	176,929	181,798	2.8
PR ⁴	91	90	8,154	8,222	742	740	-0.3

¹ Average number during year, excluding heifers not yet fresh.

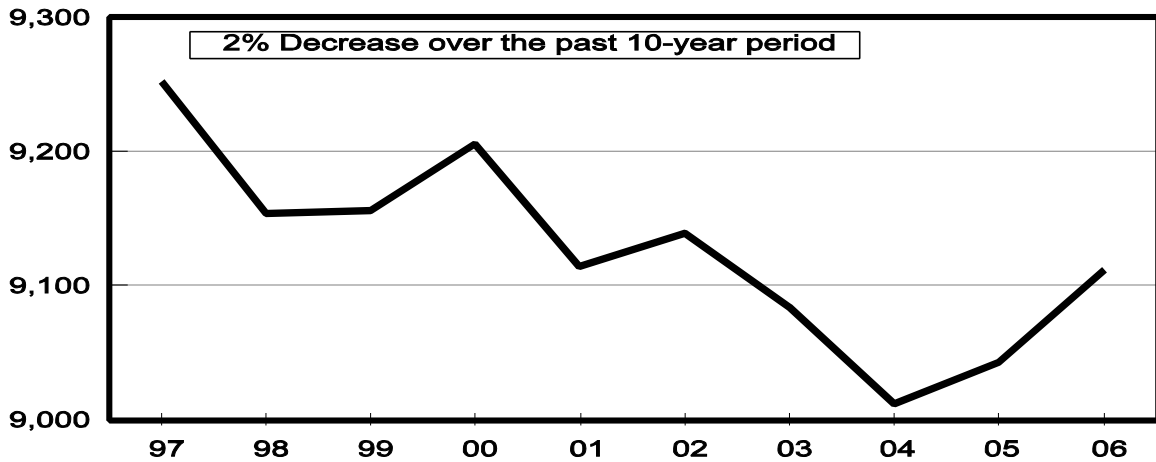
² Excludes milk sucked by calves.

³ May not add due to rounding.

⁴ Puerto Rico is not included in the U.S. total.

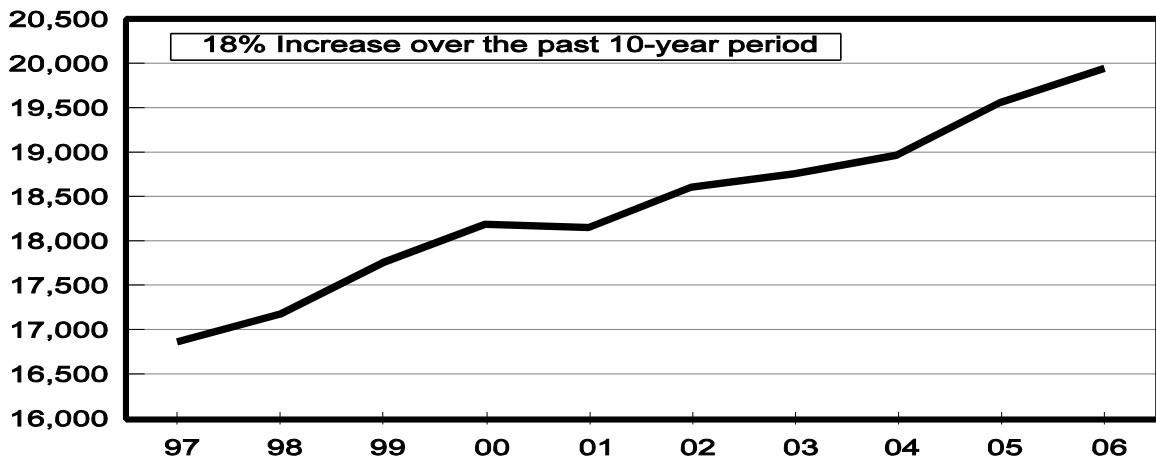
Milk Cows, 1997-2006 United States

Thousand Head



Rate per Cow, 1997-2006 United States

Pounds



Milk Cows: Number by Month, State, 23 State, and United States, 2005 ¹

State	Jan	Feb	Mar	Apr	May	Jun	
	<i>1,000 Head</i>	<i>1,000 Head</i>	<i>1,000 Head</i>	<i>1,000 Head</i>	<i>1,000 Head</i>	<i>1,000 Head</i>	
AZ	165	164	164	164	163	162	
CA	1,739	1,742	1,744	1,747	1,751	1,753	
CO	100	100	102	103	104	105	
FL	138	139	139	138	138	137	
ID	436	437	441	443	445	451	
IL	105	105	105	105	104	104	
IN	155	155	156	157	157	156	
IA	190	190	191	192	193	193	
KS	109	109	110	111	112	112	
KY	110	110	107	107	107	107	
MI	306	308	309	311	312	313	
MN	460	455	455	455	455	455	
MO	118	117	119	119	119	118	
NM	319	320	322	323	323	325	
NY	650	650	648	646	646	647	
OH	267	267	268	269	270	270	
OR	120	120	121	121	121	121	
PA	564	560	560	563	565	563	
TX	318	317	318	319	320	320	
VT	143	143	143	144	144	143	
VA	105	105	105	105	105	105	
WA	235	237	239	241	243	243	
WI	1,235	1,234	1,233	1,234	1,234	1,235	
23-Sts	8,087	8,084	8,099	8,117	8,131	8,138	
US ³	9,000	8,996	9,011	9,029	9,043	9,050	
	Jul	Aug	Sep	Oct	Nov	Dec	Annual Avg. ²
AZ	163	164	165	166	167	169	165
CA	1,756	1,759	1,762	1,765	1,770	1,771	1,755
CO	105	105	106	106	105	105	104
FL	136	135	134	135	136	135	137
ID	460	468	469	470	471	472	455
IL	104	104	104	104	104	104	104
IN	156	157	156	155	157	158	156
IA	195	198	199	200	200	200	195
KS	112	112	112	112	112	111	111
KY	106	106	105	103	102	102	106
MI	313	314	314	313	313	314	312
MN	455	450	450	450	445	445	453
MO	117	115	115	114	114	114	117
NM	328	331	333	335	337	339	328
NY	647	647	649	650	648	650	648
OH	270	270	270	270	271	273	270
OR	121	121	121	121	121	121	121
PA	561	562	561	558	556	557	561
TX	320	320	320	320	321	324	320
VT	143	143	142	142	142	143	143
VA	105	105	105	105	105	104	105
WA	245	245	245	243	240	237	241
WI	1,236	1,236	1,237	1,238	1,238	1,239	1,236
23-Sts	8,154	8,167	8,174	8,175	8,175	8,187	8,141
US ³	9,053	9,066	9,072	9,060	9,060	9,073	9,043

¹ Includes dry cows, excludes heifers not yet fresh.

² Average based on monthly totals.

³ U.S. monthly estimates are derived by proportionally allocating the quarterly estimates using the 23-state monthly total.

Milk Cows: Number by Month, State, 23 State, and United States, 2006 ¹

State	Jan	Feb	Mar	Apr	May	Jun	
	<i>1,000 Head</i>	<i>1,000 Head</i>	<i>1,000 Head</i>	<i>1,000 Head</i>	<i>1,000 Head</i>	<i>1,000 Head</i>	
AZ	171	171	172	172	172	173	
CA	1,776	1,779	1,781	1,784	1,785	1,786	
CO	106	106	107	108	110	111	
FL	134	134	133	133	133	132	
ID	473	473	476	478	484	489	
IL	104	104	104	103	103	103	
IN	161	162	163	165	166	166	
IA	200	201	201	203	204	206	
KS	111	111	111	112	113	113	
KY	101	101	100	99	98	98	
MI	314	314	316	318	320	322	
MN	445	450	450	450	450	450	
MO	114	114	115	116	116	116	
NM	342	344	347	350	356	360	
NY	647	645	645	644	643	640	
OH	273	273	273	273	273	274	
OR	120	119	118	118	118	118	
PA	557	555	555	557	556	555	
TX	326	328	332	333	333	333	
VT	143	143	143	143	142	141	
VA	103	103	103	103	103	103	
WA	237	236	238	237	237	237	
WI	1,240	1,240	1,241	1,241	1,242	1,243	
23-Sts	8,198	8,206	8,224	8,240	8,257	8,269	
US ³	9,081	9,088	9,106	9,116	9,129	9,139	
	Jul	Aug	Sep	Oct	Nov	Dec	Annual Avg. ²
AZ	173	173	174	175	175	175	173
CA	1,774	1,770	1,773	1,778	1,782	1,787	1,780
CO	112	112	112	112	113	114	110
FL	131	130	129	129	130	130	132
ID	490	497	497	497	497	500	488
IL	103	103	103	103	103	103	103
IN	166	165	165	165	166	166	165
IA	206	207	208	208	209	209	205
KS	113	113	113	112	112	111	112
KY	97	96	96	95	95	94	98
MI	322	320	320	321	323	324	320
MN	450	450	450	450	450	455	450
MO	115	115	115	115	115	115	115
NM	362	362	360	360	360	360	355
NY	638	634	631	630	626	628	638
OH	274	274	274	274	274	274	274
OR	118	118	117	117	117	116	118
PA	555	554	553	552	550	549	554
TX	335	337	338	340	342	346	335
VT	141	141	140	140	140	140	141
VA	103	102	102	102	101	100	102
WA	237	238	237	236	235	235	237
WI	1,243	1,244	1,244	1,244	1,245	1,245	1,243
23-Sts	8,258	8,255	8,251	8,255	8,260	8,276	8,246
US ³	9,119	9,114	9,107	9,107	9,111	9,126	9,112

¹ Includes dry cows, excludes heifers not yet fresh.

² Average based on monthly totals.

³ U.S. monthly estimates are derived by proportionally allocating the quarterly estimates using the 23-state monthly total.

**Milk Produced per Cow: by Month,
State, 23 States, and United States, 2005 ¹**

State	Jan	Feb	Mar	Apr	May	Jun	
	<i>Pounds</i>	<i>Pounds</i>	<i>Pounds</i>	<i>Pounds</i>	<i>Pounds</i>	<i>Pounds</i>	
AZ	1,975	1,840	2,080	2,060	2,085	1,950	
CA	1,770	1,635	1,850	1,825	1,880	1,815	
CO	1,860	1,720	1,925	1,865	1,950	1,905	
FL	1,520	1,475	1,640	1,570	1,585	1,440	
ID	1,830	1,680	1,880	1,850	1,930	1,900	
IL	1,620	1,500	1,670	1,605	1,660	1,600	
IN	1,640	1,610	1,700	1,800	1,810	1,715	
IA	1,750	1,615	1,795	1,775	1,845	1,725	
KS	1,730	1,575	1,810	1,755	1,815	1,730	
KY	1,080	990	1,140	1,150	1,195	1,105	
MI	1,785	1,660	1,825	1,830	1,915	1,835	
MN	1,510	1,405	1,570	1,540	1,610	1,540	
MO	1,330	1,230	1,400	1,430	1,490	1,380	
NM	1,710	1,560	1,790	1,780	1,880	1,840	
NY	1,535	1,415	1,570	1,565	1,665	1,590	
OH	1,460	1,370	1,520	1,520	1,595	1,500	
OR	1,570	1,460	1,640	1,610	1,660	1,610	
PA	1,540	1,420	1,600	1,600	1,675	1,595	
TX	1,655	1,560	1,795	1,780	1,830	1,720	
VT	1,560	1,430	1,595	1,570	1,650	1,565	
VA	1,465	1,345	1,495	1,485	1,535	1,420	
WA	1,960	1,805	2,020	1,965	2,025	1,950	
WI	1,515	1,400	1,560	1,540	1,630	1,590	
23-Sts	1,643	1,522	1,707	1,690	1,760	1,690	
US ²	1,623	1,503	1,687	1,666	1,736	1,667	
	Jul	Aug	Sep	Oct	Nov	Dec	Annual Avg.
AZ	1,855	1,740	1,685	1,785	1,785	1,895	22,679
CA	1,780	1,795	1,750	1,785	1,725	1,795	21,404
CO	1,960	1,970	1,875	1,870	1,820	1,890	22,577
FL	1,315	1,235	1,105	1,135	1,220	1,360	16,591
ID	1,960	1,940	1,850	1,870	1,790	1,830	22,332
IL	1,580	1,515	1,450	1,510	1,480	1,570	18,827
IN	1,705	1,660	1,615	1,685	1,630	1,685	20,295
IA	1,730	1,720	1,650	1,675	1,630	1,725	20,641
KS	1,695	1,690	1,610	1,680	1,650	1,730	20,505
KY	1,065	1,030	970	1,040	1,030	1,100	12,896
MI	1,850	1,840	1,750	1,800	1,745	1,825	21,635
MN	1,510	1,510	1,435	1,475	1,455	1,545	18,091
MO	1,360	1,300	1,210	1,280	1,280	1,380	16,026
NM	1,845	1,825	1,710	1,760	1,720	1,780	21,192
NY	1,600	1,600	1,515	1,550	1,485	1,545	18,639
OH	1,480	1,460	1,420	1,430	1,410	1,430	17,567
OR	1,640	1,630	1,570	1,560	1,470	1,490	18,876
PA	1,590	1,575	1,500	1,550	1,500	1,580	18,722
TX	1,710	1,625	1,515	1,605	1,630	1,720	20,131
VT	1,565	1,550	1,480	1,505	1,465	1,535	18,469
VA	1,390	1,360	1,325	1,370	1,370	1,440	16,990
WA	1,985	1,970	1,895	1,925	1,840	1,910	23,270
WI	1,600	1,595	1,510	1,535	1,480	1,550	18,500
23-Sts	1,683	1,671	1,598	1,636	1,590	1,661	19,851
US ²	1,654	1,642	1,571	1,613	1,567	1,637	19,565

¹ Excludes milk sucked by calves.

² U.S. monthly estimates are derived by proportionally allocating the quarterly estimates using the 23-state monthly total.

**Milk Produced per Cow: by Month,
State, 23 States and United States, 2006 ¹**

State	Jan	Feb	Mar	Apr	May	Jun	
	<i>Pounds</i>	<i>Pounds</i>	<i>Pounds</i>	<i>Pounds</i>	<i>Pounds</i>	<i>Pounds</i>	
AZ	2,045	1,940	2,190	2,145	2,155	1,955	
CA	1,825	1,710	1,925	1,855	1,895	1,795	
CO	1,935	1,775	1,980	1,910	2,000	1,965	
FL	1,485	1,425	1,640	1,540	1,520	1,415	
ID	1,830	1,670	1,880	1,850	1,940	1,910	
IL	1,630	1,540	1,720	1,650	1,690	1,590	
IN	1,720	1,575	1,775	1,715	1,750	1,670	
IA	1,750	1,610	1,780	1,735	1,765	1,680	
KS	1,790	1,650	1,840	1,810	1,870	1,770	
KY	1,150	1,080	1,260	1,230	1,220	1,090	
MI	1,890	1,725	1,905	1,850	1,920	1,865	
MN	1,605	1,460	1,625	1,575	1,620	1,560	
MO	1,440	1,320	1,500	1,500	1,470	1,320	
NM	1,845	1,700	1,910	1,870	1,980	1,875	
NY	1,595	1,475	1,630	1,590	1,660	1,595	
OH	1,490	1,390	1,560	1,530	1,610	1,470	
OR	1,560	1,450	1,650	1,630	1,680	1,620	
PA	1,650	1,550	1,700	1,650	1,700	1,620	
TX	1,840	1,735	1,975	1,905	1,955	1,820	
VT	1,580	1,450	1,610	1,560	1,630	1,545	
VA	1,510	1,410	1,560	1,555	1,560	1,415	
WA	1,940	1,790	1,980	1,950	2,025	1,960	
WI	1,585	1,455	1,620	1,580	1,650	1,590	
23-Sts	1,711	1,586	1,775	1,726	1,782	1,697	
US ²	1,690	1,567	1,753	1,705	1,760	1,676	
	Jul	Aug	Sep	Oct	Nov	Dec	Annual Avg.
AZ	1,775	1,655	1,620	1,720	1,750	1,915	22,855
CA	1,760	1,860	1,775	1,815	1,760	1,845	21,815
CO	1,980	1,950	1,910	1,920	1,870	1,910	23,155
FL	1,350	1,180	1,110	1,185	1,245	1,360	16,417
ID	1,960	1,960	1,860	1,870	1,790	1,820	22,326
IL	1,600	1,550	1,485	1,550	1,510	1,620	19,204
IN	1,670	1,625	1,595	1,640	1,610	1,690	19,994
IA	1,680	1,620	1,560	1,640	1,620	1,700	20,146
KS	1,720	1,740	1,630	1,680	1,660	1,750	20,920
KY	1,060	990	1,010	1,050	1,060	1,120	13,276
MI	1,895	1,840	1,800	1,840	1,810	1,880	22,188
MN	1,560	1,525	1,470	1,515	1,495	1,575	18,587
MO	1,270	1,185	1,180	1,240	1,250	1,300	16,000
NM	1,880	1,780	1,650	1,675	1,650	1,690	21,515
NY	1,605	1,580	1,515	1,550	1,515	1,580	18,879
OH	1,470	1,440	1,430	1,440	1,440	1,485	17,737
OR	1,640	1,640	1,580	1,570	1,480	1,520	19,000
PA	1,600	1,580	1,560	1,600	1,560	1,620	19,390
TX	1,760	1,655	1,585	1,650	1,675	1,765	21,328
VT	1,540	1,510	1,460	1,485	1,445	1,520	18,383
VA	1,390	1,350	1,320	1,370	1,365	1,480	17,363
WA	1,960	1,980	1,880	1,910	1,815	1,890	23,055
WI	1,610	1,575	1,520	1,555	1,500	1,590	18,824
23-Sts	1,688	1,676	1,613	1,652	1,614	1,690	20,210
US ²	1,663	1,653	1,590	1,631	1,594	1,669	19,951

¹ Excludes milk sucked by calves.

² U.S. monthly estimates are derived by proportionally allocating the quarterly estimates using the 23-state monthly total.

**Milk Production: Total by Month, State,
23 States, and United States, 2005 ¹**

State	Jan	Feb	Mar	Apr	May	Jun	
	<i>Million Pounds</i>	<i>Million Pounds</i>	<i>Million Pounds</i>	<i>Million Pounds</i>	<i>Million Pounds</i>	<i>Million Pounds</i>	
AZ	326	302	341	338	340	316	
CA	3,078	2,848	3,226	3,188	3,292	3,182	
CO	186	172	196	192	203	200	
FL	210	205	228	217	219	197	
ID	798	734	829	820	859	857	
IL	170	158	175	169	173	166	
IN	254	250	265	283	284	268	
IA	333	307	343	341	356	333	
KS	189	172	199	195	203	194	
KY	119	109	122	123	128	118	
MI	546	511	564	569	597	574	
MN	695	639	714	701	733	701	
MO	157	144	167	170	177	163	
NM	545	499	576	575	607	598	
NY	998	920	1,017	1,011	1,076	1,029	
OH	390	366	407	409	431	405	
OR	188	175	198	195	201	195	
PA	869	795	896	901	946	898	
TX	526	495	571	568	586	550	
VT	223	204	228	226	238	224	
VA	154	141	157	156	161	149	
WA	461	428	483	474	492	474	
WI	1,871	1,728	1,923	1,900	2,011	1,964	
23-Sts	13,286	12,302	13,825	13,721	14,313	13,755	
US ³	14,606	13,523	15,197	15,047	15,695	15,083	
	Jul	Aug	Sep	Oct	Nov	Dec	Annual Total ²
AZ	302	285	278	296	298	320	3,742
CA	3,126	3,157	3,084	3,151	3,053	3,179	37,564
CO	206	207	199	198	191	198	2,348
FL	179	167	148	153	166	184	2,273
ID	902	908	868	879	843	864	10,161
IL	164	158	151	157	154	163	1,958
IN	266	261	252	261	256	266	3,166
IA	337	341	328	335	326	345	4,025
KS	190	189	180	188	185	192	2,276
KY	113	109	102	107	105	112	1,367
MI	579	578	550	563	546	573	6,750
MN	687	680	646	664	647	688	8,195
MO	159	150	139	146	146	157	1,875
NM	605	604	569	590	580	603	6,951
NY	1,035	1,035	983	1,008	962	1,004	12,078
OH	400	394	383	386	382	390	4,743
OR	198	197	190	189	178	180	2,284
PA	892	885	842	865	834	880	10,503
TX	547	520	485	514	523	557	6,442
VT	224	222	210	214	208	220	2,641
VA	146	143	139	144	144	150	1,784
WA	486	483	464	468	442	453	5,608
WI	1,978	1,971	1,868	1,900	1,832	1,920	22,866
23-Sts	13,721	13,644	13,058	13,376	13,001	13,598	161,600
US ³	14,976	14,891	14,252	14,609	14,199	14,851	176,929

¹ Excludes milk sucked by calves.

² Total milk production for year.

³ U.S. monthly estimates are derived by proportionally allocating the quarterly estimates using the 23-state monthly total.

**Milk Production: Total by Month, State,
23 States, and United States, 2006¹**

State	Jan	Feb	Mar	Apr	May	Jun	
	<i>Million Pounds</i>	<i>Million Pounds</i>	<i>Million Pounds</i>	<i>Million Pounds</i>	<i>Million Pounds</i>	<i>Million Pounds</i>	
AZ	350	332	377	369	371	338	
CA	3,241	3,042	3,428	3,309	3,383	3,206	
CO	205	188	212	206	220	218	
FL	199	191	218	205	202	187	
ID	866	790	895	884	939	934	
IL	170	160	179	170	174	164	
IN	277	255	289	283	291	277	
IA	350	324	358	352	360	346	
KS	199	183	204	203	211	200	
KY	116	109	126	122	120	107	
MI	593	542	602	588	614	601	
MN	714	657	731	709	729	702	
MO	164	150	173	174	171	153	
NM	631	585	663	655	705	675	
NY	1,032	951	1,051	1,024	1,067	1,021	
OH	407	379	426	418	440	403	
OR	187	173	195	192	198	191	
PA	919	860	944	919	945	899	
TX	600	569	656	634	651	606	
VT	226	207	230	223	231	218	
VA	156	145	161	160	161	146	
WA	460	422	471	462	480	465	
WI	1,965	1,804	2,010	1,961	2,049	1,976	
23-Sts	14,027	13,018	14,599	14,222	14,712	14,033	
US ³	15,343	14,238	15,966	15,538	16,068	15,324	
	Jul	Aug	Sep	Oct	Nov	Dec	Annual Total ²
AZ	307	286	282	301	306	335	3,954
CA	3,122	3,292	3,147	3,227	3,136	3,297	38,830
CO	222	218	214	215	211	218	2,547
FL	177	153	143	153	162	177	2,167
ID	960	974	924	929	890	910	10,895
IL	165	160	153	160	156	167	1,978
IN	277	268	263	271	267	281	3,299
IA	346	335	324	341	339	355	4,130
KS	194	197	184	188	186	194	2,343
KY	103	95	97	100	101	105	1,301
MI	610	589	576	591	585	609	7,100
MN	702	686	662	682	673	717	8,364
MO	146	136	136	143	144	150	1,840
NM	681	644	594	603	594	608	7,638
NY	1,024	1,002	956	977	948	992	12,045
OH	403	395	392	395	395	407	4,860
OR	194	194	185	184	173	176	2,242
PA	888	875	863	883	858	889	10,742
TX	590	558	536	561	573	611	7,145
VT	217	213	204	208	202	213	2,592
VA	143	138	135	140	138	148	1,771
WA	465	471	446	451	427	444	5,464
WI	2,001	1,959	1,891	1,934	1,868	1,980	23,398
23-Sts	13,937	13,838	13,307	13,637	13,332	13,983	166,645
US ³	15,168	15,061	14,481	14,857	14,523	15,231	181,798

¹ Excludes milk sucked by calves.

² Total milk production for year.

³ U.S. monthly estimates are derived by proportionally allocating the quarterly estimates using the 23-state monthly total.

**Milk Cows and Production: Number and Milk Produced
by Quarter, State, and United States, 2005**

State	Milk Cows ¹				Milk Production ²			
	Jan-Mar	Apr-Jun	Jul-Sep	Oct-Dec	Jan-Mar	Apr-Jun	Jul-Sep	Oct-Dec
	<i>1,000 Head</i>	<i>1,000 Head</i>	<i>1,000 Head</i>	<i>1,000 Head</i>	<i>Million Pounds</i>	<i>Million Pounds</i>	<i>Million Pounds</i>	<i>Million Pounds</i>
AL	16	16	16	15	64	63	47	50
AK	1.2	1.2	1.1	0.9	3.6	3.8	3.4	2.7
AZ	164	163	164	167	969	994	865	914
AR	23	23	22	21	77	80	74	67
CA	1,742	1,750	1,759	1,769	9,152	9,662	9,367	9,383
CO	101	104	105	105	554	595	612	587
CT	20	20	20	20	99	101	92	92
DE	7.5	7.5	7.5	7.0	34.0	35.0	32.3	29.4
FL	139	138	135	135	643	633	494	503
GA	83	82	81	79	379	382	310	327
HI	5.7	5.4	5.3	5.1	17.7	19.0	17.4	15.5
ID	438	446	466	471	2,361	2,536	2,678	2,586
IL	105	104	104	104	503	508	473	474
IN	155	157	156	157	769	835	779	783
IA	190	193	197	200	983	1,030	1,006	1,006
KS	109	112	112	112	560	592	559	565
KY	109	107	106	102	350	369	324	324
LA	36	36	34	33	128	124	88	94
ME	33	33	33	32	147	155	151	142
MD	73	72	70	68	289	301	271	274
MA	17	17	16	16	73	76	72	69
MI	308	312	314	313	1,621	1,740	1,707	1,682
MN	457	455	452	447	2,048	2,135	2,013	1,999
MS	26	26	25	24	109	109	81	83
MO	118	119	116	114	468	510	448	449
MT	18	19	19	19	89	95	95	93
NE	60	60	60	60	268	279	263	267
NV	25	25	25	26	128	137	137	140
NH	16	16	16	16	75	79	74	74
NJ	12	12	11.5	11.5	49	50	47	46
NM	320	324	331	337	1,620	1,780	1,778	1,773
NY	649	646	648	649	2,935	3,116	3,053	2,974
NC	55	54	54	53	260	266	248	238
ND	33	33	32	33	114	122	115	117
OH	267	270	270	271	1,163	1,245	1,177	1,158
OK	75	75	75	75	311	321	311	293
OR	120	121	121	121	561	591	585	547
PA	561	564	561	557	2,560	2,745	2,619	2,579
RI	1.1	1.1	1.1	1.0	4.6	5.0	4.7	4.4
SC	18	18	17	17	81	79	61	67
SD	81	81	81	81	350	371	358	358
TN	72	71	69	69	295	300	250	257
TX	318	320	320	322	1,592	1,704	1,552	1,594
UT	88	89	88	85	404	417	427	413
VT	143	144	143	142	655	688	656	642
VA	105	105	105	105	452	466	428	438
WA	237	242	245	240	1,372	1,440	1,433	1,363
WV	13	13	13	13	48	49	48	49
WI	1,234	1,234	1,236	1,238	5,522	5,875	5,817	5,652
WY	4.4	4.5	5.0	5.8	15.8	17.1	18.5	21.5
US ³	9,002	9,041	9,064	9,064	43,326	45,825	44,119	43,659

¹ Quarterly average includes dry cows, excludes heifers not yet fresh.

² Excludes milk sucked by calves.

³ May not add due to rounding.

**Milk Cows and Production: Number and Milk Produced
by Quarter, State, and United States, 2006**

State	Milk Cows ¹				Milk Production ²			
	Jan-Mar	Apr-Jun	Jul-Sep	Oct-Dec	Jan-Mar	Apr-Jun	Jul-Sep	Oct-Dec
	<i>1,000 Head</i>	<i>1,000 Head</i>	<i>1,000 Head</i>	<i>1,000 Head</i>	<i>Million Pounds</i>	<i>Million Pounds</i>	<i>Million Pounds</i>	<i>Million Pounds</i>
AL	14	14	14	13	60	56	41	46
AK	0.8	0.8	0.8	0.7	2.4	2.5	2.7	2.2
AZ	171	172	173	175	1,059	1,078	875	942
AR	21	20	20	19	71	71	61	62
CA	1,779	1,785	1,772	1,782	9,711	9,898	9,561	9,660
CO	106	110	112	113	605	644	654	644
CT	20	19.5	19	19	97	95	86	89
DE	7.0	7.0	7.0	7.0	32.2	30.8	29.0	30.0
FL	134	133	130	130	608	594	473	492
GA	78	77	76	75	379	383	312	330
HI	4.5	4.4	4.2	4.0	15.3	14.8	14.2	12.7
ID	474	484	495	498	2,551	2,757	2,858	2,729
IL	104	103	103	103	509	508	478	483
IN	162	166	165	166	821	851	808	819
IA	201	204	207	209	1,032	1,058	1,005	1,035
KS	111	113	113	112	586	614	575	568
KY	101	98	96	95	351	349	295	306
LA	33	32	31	30	119	111	80	86
ME	32	32	32	32	140	147	146	141
MD	67	66	63	60	290	290	258	255
MA	16	16	15.5	15.5	72	73	68	65
MI	315	320	321	323	1,737	1,803	1,775	1,785
MN	448	450	450	452	2,102	2,140	2,050	2,072
MS	23	23	22	22	100	94	71	76
MO	114	116	115	115	487	498	418	437
MT	19	19	18	18	90	92	87	85
NE	60	61	61	61	277	289	275	277
NV	27	27	27	27	140	140	139	139
NH	15.5	15	15	14.5	77	76	71	69
NJ	11.5	11	10.5	10.5	48	47	42	41
NM	344	355	361	360	1,879	2,035	1,919	1,805
NY	646	642	634	628	3,034	3,112	2,982	2,917
NC	52	51	50	49	254	253	217	220
ND	33	32	31	31	119	120	116	115
OH	273	273	274	274	1,212	1,261	1,190	1,197
OK	75	74	72	70	311	313	300	290
OR	119	118	118	117	555	581	573	533
PA	556	556	554	550	2,723	2,763	2,626	2,630
RI	1.1	1.1	1.1	1.1	4.6	5.0	4.8	4.6
SC	17	17	17	17	76	77	58	67
SD	81	81	81	81	364	382	380	379
TN	69	67	65	66	284	284	233	248
TX	329	333	337	343	1,825	1,891	1,684	1,745
UT	85	85	86	86	404	435	456	450
VT	143	142	141	140	663	672	634	623
VA	103	103	102	101	462	467	416	426
WA	237	237	237	235	1,353	1,407	1,382	1,322
WV	13	13	13	13	50	51	49	50
WI	1,240	1,242	1,244	1,245	5,779	5,986	5,851	5,782
WY	6.4	6.7	6.8	6.9	26.2	30.8	31.3	29.7
US ³	9,092	9,128	9,113	9,115	45,547	46,930	44,710	44,611

¹ Quarterly average includes dry cows, excludes heifers not yet fresh.

² Excludes milk sucked by calves.

³ May not add due to rounding.

**Number of Operations with Milk Cows and Number of Licensed Dairy Herds,
by State, United States, and Puerto Rico, 2005-2006**

State	2005		2006	
	Operations with Milk Cows ¹	Licensed Dairy Herds ²	Operations with Milk Cows ¹	Licensed Dairy Herds ²
	<i>Number</i>	<i>Number</i>	<i>Number</i>	<i>Number</i>
AL	190	90	170	75
AK	30	10	30	10
AZ	210	140	200	130
AR	320	210	280	190
CA	2,300	1,970	2,300	1,960
CO	660	170	630	170
CT	230	170	220	170
DE	90	90	90	60
FL	480	180	460	160
GA	610	320	580	300
HI	30	5	30	5
ID	850	725	800	690
IL	1,400	1,155	1,300	1,105
IN	2,200	1,830	2,100	1,750
IA	2,500	2,370	2,400	2,230
KS	900	460	900	450
KY	2,200	1,335	2,000	1,240
LA	390	280	350	250
ME	470	370	460	350
MD	850	655	810	630
MA	250	200	240	190
MI	2,800	2,590	2,700	2,530
MN	5,800	5,530	5,400	5,295
MS	350	230	330	190
MO	2,700	1,780	2,600	1,710
MT	650	120	600	110
NE	770	405	700	380
NV	110	30	100	30
NH	200	140	200	130
NJ	150	120	150	120
NM	450	170	450	170
NY	6,700	6,430	6,400	5,970
NC	680	365	590	345
ND	550	360	500	320
OH	4,400	3,610	4,400	3,530
OK	1,400	380	1,400	350
OR	790	330	720	320
PA	8,900	8,700	8,700	8,610
RI	30	20	30	15
SC	200	95	200	95
SD	800	650	750	600
TN	1,100	710	1,100	650
TX	1,500	780	1,300	740
UT	580	345	560	320
VT	1,300	1,230	1,200	1,170
VA	1,400	815	1,300	775
WA	810	610	790	610
WV	470	130	470	120
WI	15,300	15,100	14,900	14,640
WY	250	30	250	30
US	78,300	64,540	75,140	61,990
PR ³	1,600	370	1,600	360

¹ An operation is any place having one or more head of milk cows, excluding cows used to nurse calves, on hand at any time during the year.

² Average number of dairy farms licensed to sell milk, based on counts collected from State and other regulatory agencies.

³ Puerto Rico is not included in the U.S. total.

Reliability Statement

Survey Procedures: Primary data used to determine these estimates were obtained from a sample of producers. Individual States maintain a list of all known milk producers and information on the size of their herd. States use all known sources of producers to ensure that their lists are as complete as possible. Generally, all large producers and a sample of small producers are included in the survey. Questionnaires are mailed to producers near the end of the month to obtain data for the first day of the month. Additional reports are obtained by telephone, as needed, to supplement the mail response. Where feasible, States utilize state and federal administrative data, rather than conduct a monthly or quarterly survey, to estimate milk production. This eliminates duplication of data gathering by different government agencies. Indications of milk cow inventory are also obtained in the January and July Cattle Surveys.

Estimation Procedures: State offices prepare these estimates by using a combination of survey indications, historic trends, and any available administrative data. Individual State estimates are reviewed by the Agricultural Statistics Board for reasonableness.

Revision Policy: Milk production, rate per cow, and number of cows are subject to revision the following month for monthly States or the following quarter for the quarterly States. Normally, Federal Market Order sales are the main basis for revisions. However, data for all orders are not available in time for this revision. Estimates are again subject to revisions in February each year based on additional administrative data. In the event that additional changes are necessary, a third revision is possible in February the following year. Estimates are again reviewed after data from the five-year Census of Agriculture are available. No revisions are made after that date.

Reliability: Since all operations with dairy animals are not included in the sample, survey estimates are subject to sampling variability. Survey results are also subject to non-sampling errors such as omissions, duplications, and mistakes in reporting, recording, and processing the data. The effects of these errors cannot be measured directly. They are minimized through rigid quality controls in the data collection process and through a careful review of all reported data for consistency and reasonableness.

To assist users in evaluating the reliability of the estimates in this report, the "Root Mean Square Error" is shown for selected items on the next page. The "Root Mean Square Error" is a statistical measure based on past performance and is computed using the differences between first and final estimates. The "Root Mean Square Error" for milk cow inventory estimates over the past 10 October - December quarters is 0.3 percent. This means that chances are 2 out of 3 that the final October - December estimate will not be above or below the current estimate of 9.12 million head by more than 0.3 percent. Chances are 9 out of 10 that the difference will not exceed 0.6 percent.

Reliability of October-December Milk Estimates ¹

Item	Root Mean Square Error	90% Confidence Level		Difference Between First and Latest Estimates			Quarters	
				Average	Smallest	Largest	First Above Latest	First Below Latest
				Million Pounds	Million Pounds	Million Pounds	Number	Number
Milk Production	<i>Percent</i> 0.4	<i>Percent</i> 0.7	<i>Million Pounds</i> 312	<i>Million Pounds</i> 132	<i>Million Pounds</i> 1	<i>Million Pounds</i> 265	<i>Number</i> 6	<i>Number</i> 4
All Milk Cows	<i>Percent</i> 0.3	<i>Percent</i> 0.6	<i>1,000 Head</i> 55	<i>1,000 Head</i> 17	<i>1,000 Head</i> 1	<i>1,000 Head</i> 73	<i>Number</i> 6	<i>Number</i> 4

¹ Based on records for the past 10 October-December quarters.

Information Contacts

Listed below are the commodity specialists in the Livestock Branch of the National Agricultural Statistics Service to contact for additional information.

Dan Kerestes, Chief, Livestock Branch (202) 720-3570

Livestock Section

William Weaver, Head, Livestock Section (202) 720-3570
 Bruce Boess - Hogs and Pigs (202) 720-3106
 Shawn Clark - Dairy Products (202) 690-3236
 Jason Hardegree - Milk Production and Milk Cows (202) 720-3278
 Scott Hollis - Sheep & Lambs, Goats (202) 720-4751
 Mike Miller - Cattle, Cattle on Feed (202) 720-3040
 Katy Paulsen - Livestock Slaughter (515) 284-4340
 Charmaine Wilson - Dairy Products Prices (202) 690-2168

ACCESS TO REPORTS!!

For your convenience, there are several ways to obtain NASS reports, data products, and services:

INTERNET ACCESS

All NASS reports are available free of charge on the worldwide Internet. For access, connect to the Internet and go to the NASS Home Page at: www.nass.usda.gov.

E-MAIL SUBSCRIPTION

All NASS reports are available by subscription free of charge direct to your e-mail address. Starting with the NASS Home Page at www.nass.usda.gov, under the right navigation, *Receive reports by Email*, click on **National** or **State**. Follow the instructions on the screen.

PRINTED REPORTS OR DATA PRODUCTS

CALL OUR TOLL-FREE ORDER DESK: 800-999-6779 (U.S. and Canada)
Other areas, please call 703-605-6220 FAX: 703-605-6900
(Visa, MasterCard, check, or money order acceptable for payment.)

ASSISTANCE

For **assistance** with general agricultural statistics or further information about NASS or its products or services, contact the **Agricultural Statistics Hotline** at **800-727-9540**, 7:30 a.m. to 4:00 p.m. ET, or e-mail: nass@nass.usda.gov.

The U.S. Department of Agriculture (USDA) prohibits discrimination in all its programs and activities on the basis of race, color, national origin, age, disability, and where applicable, sex, marital status, familial status, parental status, religion, sexual orientation, genetic information, political beliefs, reprisal, or because all or a part of an individual's income is derived from any public assistance program. (Not all prohibited bases apply to all programs.) Persons with disabilities who require alternative means for communication of program information (Braille, large print, audiotape, etc.) should contact USDA's TARGET Center at (202) 720-2600 (voice and TDD).

To file a complaint of discrimination, write to USDA, Director, Office of Civil Rights, 1400 Independence Avenue, S.W., Washington, D.C. 20250-9410, or call (800) 795-3272 (voice) or (202) 720-6382 (TDD). USDA is an equal opportunity provider and employer.