



# NASS

FACT FINDERS FOR AGRICULTURE  
UNITED STATES DEPARTMENT OF AGRICULTURE

Washington, D.C.

# Milk Production

Released March 16, 2007, by the National Agricultural Statistics Service (NASS), Agricultural Statistics Board, U.S. Department of Agriculture. For information on *Milk Production* call Jason Hardegree at 202-720-3278, office hours 7:30 a.m. to 4:00 p.m. ET.

## February Milk Production Up 0.9 Percent

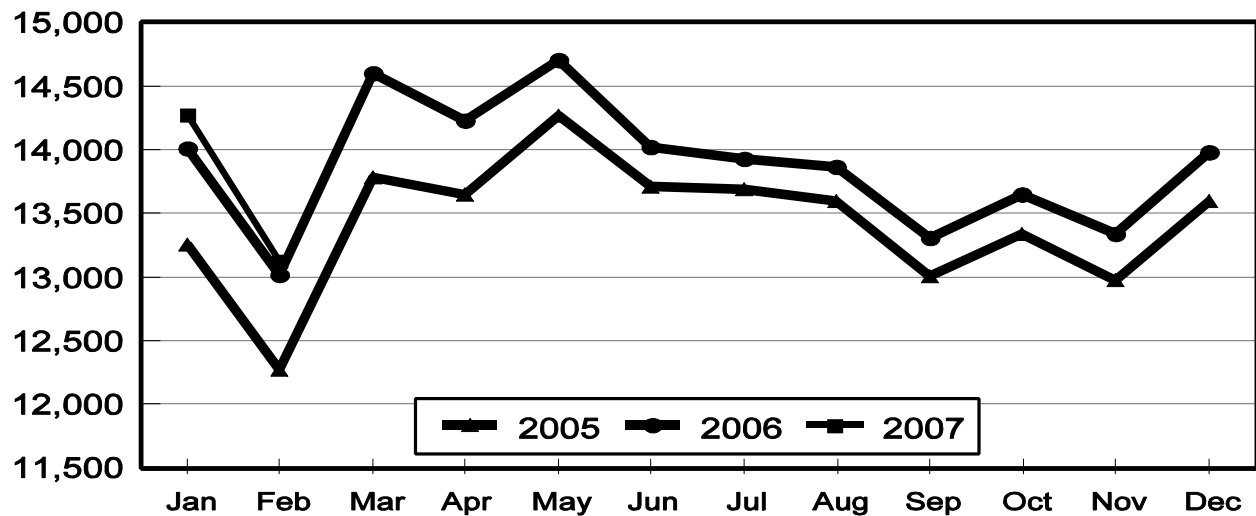
**Milk production** in the 23 major States during February totaled 13.1 billion pounds, up 0.9 percent from February 2006. January revised production, at 14.3 billion pounds, was up 1.8 percent from January 2006. The January revision represented an increase of 48 million pounds or 0.3 percent from last month's preliminary production estimate.

**Production per cow** in the 23 major States averaged 1,586 pounds for February, no change from February 2006.

**The number of milk cows** on farms in the 23 major States was 8.28 million head, 71,000 head more than February 2006, but 3,000 head less than January 2007.

## Monthly Milk Production 23 States

Million Pounds



**Milk Cows and Production: By Quarter, United States, 2006-2007<sup>1</sup>**

Quarter	Milk Cows <sup>2</sup>		Milk Per Cow <sup>3</sup>		Milk Production <sup>3</sup>		
	2006	2007	2006	2007	2006	2007	Change From 2006
	<i>1,000 Head</i>	<i>1,000 Head</i>	<i>Pounds</i>	<i>Pounds</i>	<i>Million Pounds</i>	<i>Million Pounds</i>	<i>Percent</i>
Jan-Mar	9,092		5,010		45,547		
Apr-Jun	9,128		5,141		46,930		
Jul-Sep	9,113		4,906		44,710		
Oct-Dec	9,115		4,894		44,611		
Annual	9,112		19,951		181,798		

<sup>1</sup> May not add due to rounding.

<sup>2</sup> Includes dry cows, excludes heifers not yet fresh.

<sup>3</sup> Excludes milk sucked by calves.

**Milk Cows and Production: By Month, 23 Selected States, 2006-2007<sup>1</sup>**

Month	Milk Cows <sup>2</sup>		Milk Per Cow <sup>3</sup>		Milk Production <sup>3</sup>		
	2006	2007	2006	2007	2006	2007	Change from 2006
	<i>1,000 Head</i>	<i>1,000 Head</i>	<i>Pounds</i>	<i>Pounds</i>	<i>Million Pounds</i>	<i>Million Pounds</i>	<i>Percent</i>
Jan	8,198	8,280	1,711	1,724	14,027	14,276	1.8
Feb	8,206	8,277	1,586	1,586	13,018	13,129	0.9
Mar	8,224		1,775		14,599		
Apr	8,240		1,726		14,222		
May	8,257		1,782		14,712		
Jun	8,269		1,697		14,033		
Jul	8,258		1,688		13,937		
Aug	8,255		1,676		13,838		
Sep	8,251		1,613		13,307		
Oct	8,255		1,652		13,637		
Nov	8,260		1,614		13,332		
Dec	8,276		1,690		13,983		
Annual	8,246		20,210		166,645		

<sup>1</sup> 2007 revised.

<sup>2</sup> Includes dry cows, excludes heifers not yet fresh.

<sup>3</sup> Excludes milk sucked by calves.

**Estimated Milk Cows and Production: By Month, United States, 2006-2007<sup>1</sup>**

Month	Milk Cows <sup>2</sup>		Milk Per Cow <sup>3</sup>		Milk Production <sup>3</sup>		
	2006	2007	2006	2007	2006	2007	Change From 2006
	<i>1,000 Head</i>	<i>1,000 Head</i>	<i>Pounds</i>	<i>Pounds</i>	<i>Million Pounds</i>	<i>Million Pounds</i>	<i>Percent</i>
Jan	9,081	9,128	1,690	1,704	15,343	15,554	1.4
Feb	9,088	9,123	1,567	1,567	14,238	14,300	0.4
Mar	9,106		1,753		15,966		
Apr	9,116		1,705		15,538		
May	9,129		1,760		16,068		
Jun	9,139		1,676		15,324		
Jul	9,119		1,663		15,168		
Aug	9,114		1,653		15,061		
Sep	9,107		1,590		14,481		
Oct	9,107		1,631		14,857		
Nov	9,111		1,594		14,523		
Dec	9,126		1,669		15,231		
Annual	9,112		19,951		181,798		

<sup>1</sup> 2007 revised.

<sup>2</sup> Includes dry cows, excludes heifers not yet fresh.

<sup>3</sup> Excludes milk sucked by calves.

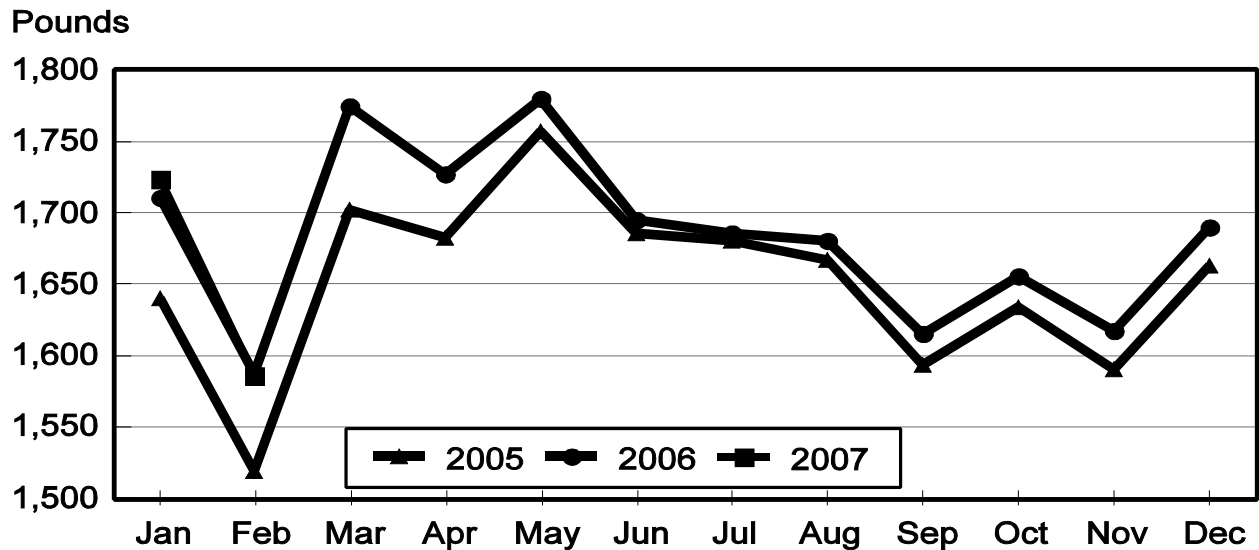
**Milk Cows and Production: By State, February 2006-2007**

State	Milk Cows <sup>1</sup>		Milk Per Cow <sup>2</sup>		Milk Production <sup>2</sup>		
	2006	2007	2006	2007	2006	2007	Change From 2006
	<i>1,000 Head</i>	<i>1,000 Head</i>	<i>Pounds</i>	<i>Pounds</i>	<i>Million Pounds</i>	<i>Million Pounds</i>	<i>Percent</i>
AZ	171	175	1,940	1,845	332	323	-2.7
CA	1,779	1,793	1,710	1,755	3,042	3,147	3.5
CO	106	115	1,775	1,660	188	191	1.6
FL	134	131	1,425	1,410	191	185	-3.1
ID	473	503	1,670	1,680	790	845	7.0
IL	104	103	1,540	1,460	160	150	-6.3
IN	162	165	1,575	1,580	255	261	2.4
IA	201	210	1,610	1,610	324	338	4.3
KS	111	110	1,650	1,565	183	172	-6.0
KY	101	93	1,080	1,140	109	106	-2.8
MI	314	325	1,725	1,745	542	567	4.6
MN	450	455	1,460	1,475	657	671	2.1
MO	114	115	1,320	1,180	150	136	-9.3
NM	344	353	1,700	1,535	585	542	-7.4
NY	645	628	1,475	1,485	951	933	-1.9
OH	273	275	1,390	1,410	379	388	2.4
OR	119	112	1,450	1,520	173	170	-1.7
PA	555	548	1,550	1,500	860	822	-4.4
TX	328	347	1,735	1,640	569	569	0.0
VT	143	140	1,450	1,385	207	194	-6.3
VA	103	100	1,410	1,380	145	138	-4.8
WA	236	235	1,790	1,805	422	424	0.5
WI	1,240	1,246	1,455	1,490	1,804	1,857	2.9
23-State Total	8,206	8,277	1,586	1,586	13,018	13,129	0.9

<sup>1</sup> Includes dry cows, excludes heifers not yet fresh.

<sup>2</sup> Excludes milk sucked by calves.

## Monthly Milk per Cow 23 States



**Milk Cows and Production: By State, January 2006-2007 <sup>1</sup>**

State	Milk Cows <sup>2</sup>		Milk per Cow <sup>3</sup>		Milk Production <sup>3</sup>		
	2006	2007	2006	2007	2006	2007	Change From 2006
	<i>1,000 Head</i>	<i>1,000 Head</i>	<i>Pounds</i>	<i>Pounds</i>	<i>Million Pounds</i>	<i>Million Pounds</i>	<i>Percent</i>
AZ	171	175	2,045	1,995	350	349	-0.3
CA	1,776	1,791	1,825	1,880	3,241	3,367	3.9
CO	106	115	1,935	1,840	205	212	3.4
FL	134	130	1,485	1,470	199	191	-4.0
ID	473	502	1,830	1,850	866	929	7.3
IL	104	103	1,630	1,645	170	169	-0.6
IN	161	165	1,720	1,720	277	284	2.5
IA	200	210	1,750	1,720	350	361	3.1
KS	111	110	1,790	1,725	199	190	-4.5
KY	101	93	1,150	1,230	116	114	-1.7
MI	314	325	1,890	1,925	593	626	5.6
MN	445	455	1,605	1,635	714	744	4.2
MO	114	115	1,440	1,300	164	150	-8.5
NM	342	358	1,845	1,690	631	605	-4.1
NY	647	628	1,595	1,610	1,032	1,011	-2.0
OH	273	275	1,490	1,520	407	418	2.7
OR	120	114	1,560	1,605	187	183	-2.1
PA	557	549	1,650	1,640	919	900	-2.1
TX	326	347	1,840	1,780	600	618	3.0
VT	143	140	1,580	1,560	226	218	-3.5
VA	103	100	1,510	1,540	156	154	-1.3
WA	237	235	1,940	1,930	460	454	-1.3
WI	1,240	1,245	1,585	1,630	1,965	2,029	3.3
23-State Total	8,198	8,280	1,711	1,724	14,027	14,276	1.8

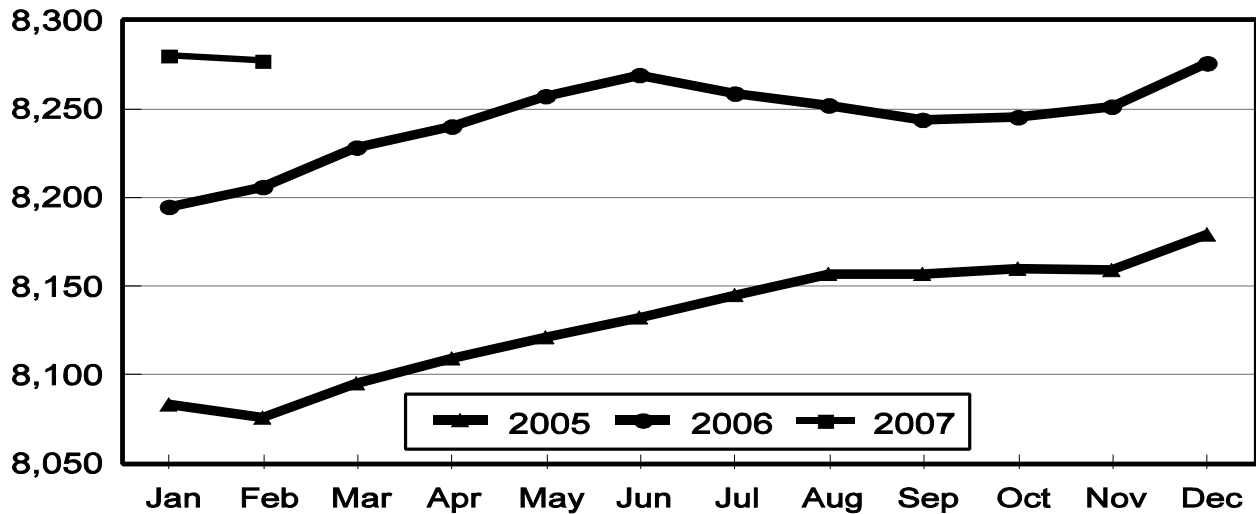
<sup>1</sup> 2007 revised.

<sup>2</sup> Includes dry cows, excludes heifers not yet fresh.

<sup>3</sup> Excludes milk sucked by calves.

## Monthly Milk Cows 23 States

Thousand Head



## Reliability Statement

**Survey Procedures:** Primary data used to determine these estimates were obtained from a sample of producers. Individual States maintain a list of all known milk producers and information on the size of their herd. States use all known sources of producers to ensure that their lists are as complete as possible. Generally, all large producers and a sample of small producers are included in the survey. Questionnaires are mailed to producers near the end of the month to obtain data for the first day of the month. Additional reports are obtained by telephone, as needed, to supplement the mail response. Where feasible, States utilize state and federal administrative data, rather than conduct a monthly or quarterly survey, to estimate milk production. This eliminates duplication of data gathering by different government agencies. Indications of milk cow inventory are also obtained in the January and July Cattle Surveys.

**Estimation Procedures:** State offices prepare these estimates by using a combination of survey indications, historic trends, and any available administrative data. Individual State estimates are reviewed by the Agricultural Statistics Board for reasonableness.

**Revision Policy:** Milk production, rate per cow, and number of cows are subject to revision the following month for monthly States or the following quarter for the quarterly States. Normally, Federal Market Order sales are the main basis for revisions. However, data for all orders are not available in time for this revision. Estimates are again subject to revisions in February each year based on additional administrative data. In the event that additional changes are necessary, a third revision is possible in February the following year. Estimates are again reviewed after data from the five-year Census of Agriculture are available. No revisions are made after that date.

**Reliability:** Since all operations with dairy animals are not included in the sample, survey estimates are subject to sampling variability. Survey results are also subject to non-sampling errors such as omissions, duplications, and mistakes in reporting, recording, and processing the data. The effects of these errors cannot be measured directly. They are minimized through rigid quality controls in the data collection process and through a careful review of all reported data for consistency and reasonableness.

To assist users in evaluating the reliability of the estimates in this report, the "Root Mean Square Error" is shown for selected items on the next page. The "Root Mean Square Error" is a statistical measure based on past performance and is computed using the differences between first and final estimates. The "Root Mean Square Error" for milk cow inventory estimates over the past 10 October - December quarters is 0.3 percent. This means that chances are 2 out of 3 that the final October - December estimate will not be above or below the current estimate of 9.12 million head by more than 0.3 percent. Chances are 9 out of 10 that the difference will not exceed 0.6 percent.

**Reliability of October-December Milk Estimates <sup>1</sup>**

Item	Root Mean Square Error	90% Confidence Level		Difference Between First and Latest Estimates			Quarters	
				Average	Smallest	Largest	First Above Latest	First Below Latest
				Million Pounds	Million Pounds	Million Pounds	Number	Number
Milk Production	<i>Percent</i> 0.4	<i>Percent</i> 0.7	<i>Million Pounds</i> 312	<i>Million Pounds</i> 132	<i>Million Pounds</i> 1	<i>Million Pounds</i> 265	<i>Number</i> 6	<i>Number</i> 4
All Milk Cows	<i>Percent</i> 0.3	<i>Percent</i> 0.6	<i>1,000 Head</i> 55	<i>1,000 Head</i> 17	<i>1,000 Head</i> 1	<i>1,000 Head</i> 73	<i>Number</i> 6	<i>Number</i> 4

<sup>1</sup> Based on records for the past 10 October-December quarters.

**Information Contacts**

Listed below are the commodity specialists in the Livestock Branch of the National Agricultural Statistics Service to contact for additional information.

- Dan Kerestes, Chief, Livestock Branch ..... (202) 720-3570
- William Weaver, Head, Livestock Section ..... (202) 720-3570
  - Bruce Boess - Hogs and Pigs ..... (202) 720-3106
  - Shawn Clark - Dairy Products ..... (202) 690-3236
  - Jason Hardegree - Milk Production and Milk Cows ..... (202) 720-3278
  - Benita Hodge - Livestock Slaughter ..... (515) 284-4340
  - Scott Hollis - Sheep & Lambs, Goats ..... (202) 720-4751
  - Mike Miller - Cattle, Cattle on Feed ..... (202) 720-3040
  - Charmaine Wilson - Dairy Products Prices ..... (202) 690-2168

## ACCESS TO REPORTS!!

---

For your convenience, there are several ways to obtain NASS reports, data products, and services:

### INTERNET ACCESS

All NASS reports are available free of charge on the worldwide Internet. For access, connect to the Internet and go to the NASS Home Page at: [www.nass.usda.gov](http://www.nass.usda.gov).

### E-MAIL SUBSCRIPTION

All NASS reports are available by subscription free of charge direct to your e-mail address. Starting with the NASS Home Page at [www.nass.usda.gov](http://www.nass.usda.gov), under the right navigation, *Receive reports by Email*, click on **National** or **State**. Follow the instructions on the screen.

-----

### PRINTED REPORTS OR DATA PRODUCTS

**CALL OUR TOLL-FREE ORDER DESK: 800-999-6779 (U.S. and Canada)**  
**Other areas, please call 703-605-6220      FAX: 703-605-6900**  
**(Visa, MasterCard, check, or money order acceptable for payment.)**

-----

### ASSISTANCE

For **assistance** with general agricultural statistics or further information about NASS or its products or services, contact the **Agricultural Statistics Hotline** at **800-727-9540**, 7:30 a.m. to 4:00 p.m. ET, or e-mail: [nass@nass.usda.gov](mailto:nass@nass.usda.gov).

The U.S. Department of Agriculture (USDA) prohibits discrimination in all its programs and activities on the basis of race, color, national origin, age, disability, and where applicable, sex, marital status, familial status, parental status, religion, sexual orientation, genetic information, political beliefs, reprisal, or because all or a part of an individual's income is derived from any public assistance program. (Not all prohibited bases apply to all programs.) Persons with disabilities who require alternative means for communication of program information (Braille, large print, audiotape, etc.) should contact USDA's TARGET Center at (202) 720-2600 (voice and TDD).

To file a complaint of discrimination, write to USDA, Director, Office of Civil Rights, 1400 Independence Avenue, S.W., Washington, D.C. 20250-9410, or call (800) 795-3272 (voice) or (202) 720-6382 (TDD). USDA is an equal opportunity provider and employer.