



NASS

FACT FINDERS FOR AGRICULTURE
UNITED STATES DEPARTMENT OF AGRICULTURE

Washington, D.C.

Milk Production

Released April 18, 2007, by the National Agricultural Statistics Service (NASS), Agricultural Statistics Board, U.S. Department of Agriculture. For information on *Milk Production* call Jason Hardegree at 202-720-3278, office hours 7:30 a.m. to 4:00 p.m. ET.

March Milk Production Up 1.1 Percent

Milk production in the 23 major States during March totaled 14.8 billion pounds, up 1.1 percent from March 2006. February revised production, at 13.1 billion pounds, was up 0.6 percent from February 2006. The February revision represented a decrease of 31 million pounds or 0.2 percent from last month's preliminary production estimate.

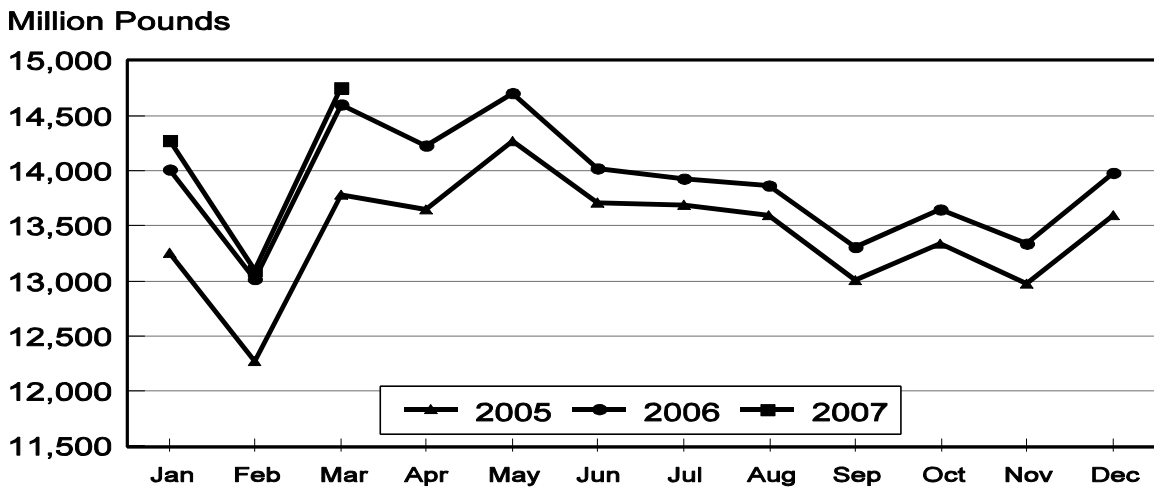
Production per cow in the 23 major States averaged 1,782 pounds for March, 7 pounds above March 2006.

The number of milk cows on farms in the 23 major States was 8.28 million head, 58,000 head more than March 2006, and 5,000 head more than February 2007.

January - March Milk Production Up 1 Percent

Milk production in the U.S. during the January - March quarter totaled 46.0 billion pounds, up 1 percent from the January - March quarter last year. The average number of milk cows in the U.S. during the quarter was 9.13 million head, 36,000 head more than the same period last year.

Monthly Milk Production 23 States



Milk Cows and Production: By Quarter, United States, 2006-2007¹

Quarter	Milk Cows ²		Milk Per Cow ³		Milk Production ³		
	2006	2007	2006	2007	2006	2007	Change From 2006
	<i>1,000 Head</i>	<i>1,000 Head</i>	<i>Pounds</i>	<i>Pounds</i>	<i>Million Pounds</i>	<i>Million Pounds</i>	<i>Percent</i>
Jan-Mar	9,092	9,128	5,010	5,039	45,547	45,999	1.0
Apr-Jun	9,128		5,141		46,930		
Jul-Sep	9,113		4,906		44,710		
Oct-Dec	9,115		4,894		44,611		
Annual	9,112		19,951		181,798		

¹ May not add due to rounding.

² Includes dry cows, excludes heifers not yet fresh.

³ Excludes milk sucked by calves.

Milk Cows and Production: By Month, 23 Selected States, 2006-2007¹

Month	Milk Cows ²		Milk Per Cow ³		Milk Production ³		
	2006	2007	2006	2007	2006	2007	Change from 2006
	<i>1,000 Head</i>	<i>1,000 Head</i>	<i>Pounds</i>	<i>Pounds</i>	<i>Million Pounds</i>	<i>Million Pounds</i>	<i>Percent</i>
Jan	8,198	8,280	1,711	1,724	14,027	14,276	1.8
Feb	8,206	8,277	1,586	1,582	13,018	13,098	0.6
Mar	8,224	8,282	1,775	1,782	14,599	14,760	1.1
Apr	8,240		1,726		14,222		
May	8,257		1,782		14,712		
Jun	8,269		1,697		14,033		
Jul	8,258		1,688		13,937		
Aug	8,255		1,676		13,838		
Sep	8,251		1,613		13,307		
Oct	8,255		1,652		13,637		
Nov	8,260		1,614		13,332		
Dec	8,276		1,690		13,983		
Annual	8,246		20,210		166,645		

¹ 2007 previous month revised.

² Includes dry cows, excludes heifers not yet fresh.

³ Excludes milk sucked by calves.

Estimated Milk Cows and Production: By Month, United States, 2006-2007¹

Month	Milk Cows ²		Milk Per Cow ³		Milk Production ³		
	2006	2007	2006	2007	2006	2007	Change From 2006
	<i>1,000 Head</i>	<i>1,000 Head</i>	<i>Pounds</i>	<i>Pounds</i>	<i>Million Pounds</i>	<i>Million Pounds</i>	<i>Percent</i>
Jan	9,081	9,129	1,690	1,707	15,343	15,585	1.6
Feb	9,088	9,126	1,567	1,567	14,238	14,300	0.4
Mar	9,106	9,130	1,753	1,765	15,966	16,114	0.9
Apr	9,116		1,705		15,538		
May	9,129		1,760		16,068		
Jun	9,139		1,676		15,324		
Jul	9,119		1,663		15,168		
Aug	9,114		1,653		15,061		
Sep	9,107		1,590		14,481		
Oct	9,107		1,631		14,857		
Nov	9,111		1,594		14,523		
Dec	9,126		1,669		15,231		
Annual	9,112		19,951		181,798		

¹ 2007 revised.

² Includes dry cows, excludes heifers not yet fresh.

³ Excludes milk sucked by calves.

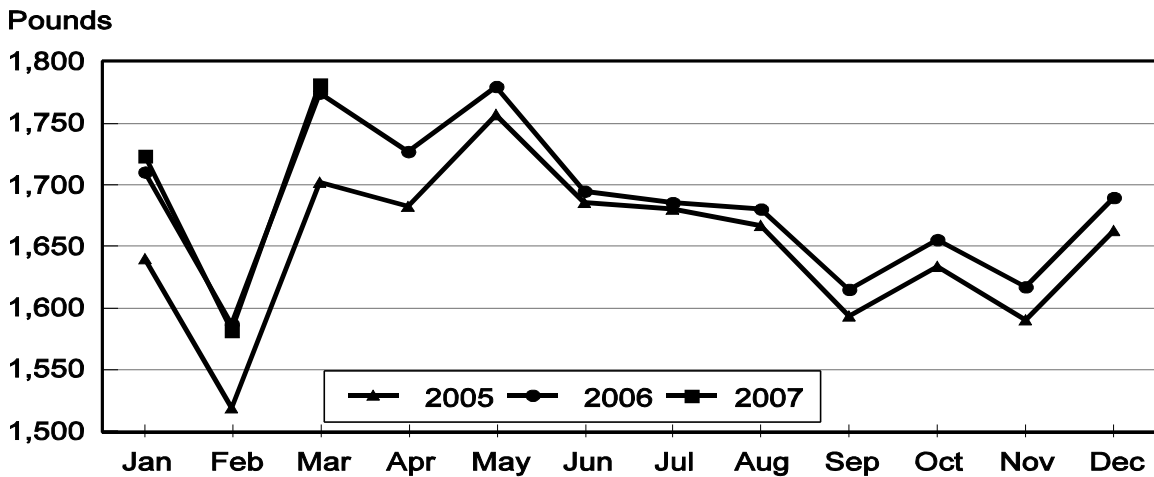
Milk Cows and Production: By State, March 2006-2007

State	Milk Cows ¹		Milk Per Cow ²		Milk Production ²		
	2006	2007	2006	2007	2006	2007	Change From 2006
	<i>1,000 Head</i>	<i>1,000 Head</i>	<i>Pounds</i>	<i>Pounds</i>	<i>Million Pounds</i>	<i>Million Pounds</i>	<i>Percent</i>
AZ	172	175	2,190	2,200	377	385	2.1
CA	1,781	1,796	1,925	1,975	3,428	3,547	3.5
CO	107	115	1,980	1,890	212	217	2.4
FL	133	130	1,640	1,640	218	213	-2.3
ID	476	504	1,880	1,890	895	953	6.5
IL	104	103	1,720	1,655	179	170	-5.0
IN	163	167	1,775	1,770	289	296	2.4
IA	201	211	1,780	1,770	358	373	4.2
KS	111	110	1,840	1,775	204	195	-4.4
KY	100	94	1,260	1,240	126	117	-7.1
MI	316	326	1,905	1,940	602	632	5.0
MN	450	455	1,625	1,650	731	751	2.7
MO	115	115	1,500	1,370	173	158	-8.7
NM	347	349	1,910	1,790	663	625	-5.7
NY	645	628	1,630	1,630	1,051	1,024	-2.6
OH	273	275	1,560	1,540	426	424	-0.5
OR	118	111	1,650	1,730	195	192	-1.5
PA	555	550	1,700	1,710	944	941	-0.3
TX	332	347	1,975	1,920	656	666	1.5
VT	143	140	1,610	1,535	230	215	-6.5
VA	103	100	1,560	1,540	161	154	-4.3
WA	238	235	1,980	1,995	471	469	-0.4
WI	1,241	1,246	1,620	1,640	2,010	2,043	1.6
23-State Total	8,224	8,282	1,775	1,782	14,599	14,760	1.1

¹ Includes dry cows, excludes heifers not yet fresh.

² Excludes milk sucked by calves.

**Monthly Milk per Cow
23 States**



Milk Cows and Production: By State, February 2006-2007 ¹

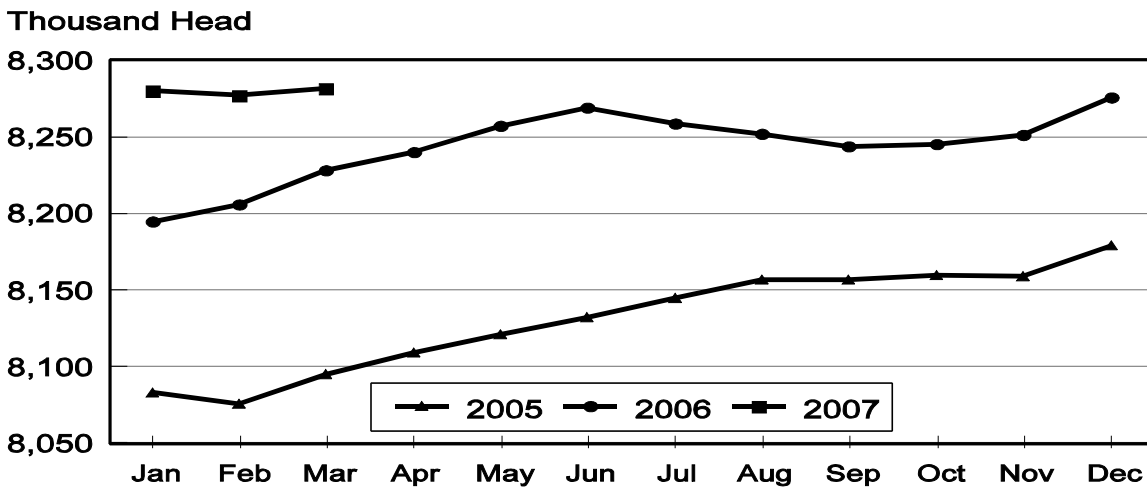
State	Milk Cows ²		Milk per Cow ³		Milk Production ³		
	2006	2007	2006	2007	2006	2007	Change From 2006
	<i>1,000 Head</i>	<i>1,000 Head</i>	<i>Pounds</i>	<i>Pounds</i>	<i>Million Pounds</i>	<i>Million Pounds</i>	<i>Percent</i>
AZ	171	175	1,940	1,885	332	330	-0.6
CA	1,779	1,793	1,710	1,755	3,042	3,147	3.5
CO	106	115	1,775	1,660	188	191	1.6
FL	134	130	1,425	1,415	191	184	-3.7
ID	473	504	1,670	1,680	790	847	7.2
IL	104	103	1,540	1,460	160	150	-6.3
IN	162	165	1,575	1,580	255	261	2.4
IA	201	210	1,610	1,600	324	336	3.7
KS	111	110	1,650	1,565	183	172	-6.0
KY	101	93	1,080	1,100	109	102	-6.4
MI	314	325	1,725	1,745	542	567	4.6
MN	450	455	1,460	1,485	657	676	2.9
MO	114	115	1,320	1,180	150	136	-9.3
NM	344	353	1,700	1,535	585	542	-7.4
NY	645	628	1,475	1,480	951	929	-2.3
OH	273	275	1,390	1,390	379	382	0.8
OR	119	112	1,450	1,545	173	173	
PA	555	548	1,550	1,500	860	822	-4.4
TX	328	347	1,735	1,640	569	569	
VT	143	140	1,450	1,385	207	194	-6.3
VA	103	100	1,410	1,380	145	138	-4.8
WA	236	235	1,790	1,780	422	418	-0.9
WI	1,240	1,246	1,455	1,470	1,804	1,832	1.6
23-State Total	8,206	8,277	1,586	1,582	13,018	13,098	0.6

¹ 2007 revised.

² Includes dry cows, excludes heifers not yet fresh.

³ Excludes milk sucked by calves.

**Monthly Milk Cows
23 States**



**Milk Cows and Production: By State and United States,
Revised October-December, 2005-2006**

State	Oct-Dec Milk Cows ¹		Oct-Dec Milk Production ²		Change From 2005
	2005	2006	2005	2006	
	<i>1,000 Head</i>	<i>1,000 Head</i>	<i>Million Pounds</i>	<i>Million Pounds</i>	<i>Percent</i>
AL	15	13	50	46	-8.0
AK	0.9	0.7	2.7	2.2	-18.5
AZ	167	175	914	942	3.1
AR	21	19	67	62	-7.5
CA	1,769	1,782	9,383	9,660	3.0
CO	105	113	587	644	9.7
CT	20	19	92	89	-3.3
DE	7	7	29.4	30.0	2.0
FL	135	130	503	492	-2.2
GA	79	75	327	330	0.9
HI	5.1	4.0	15.5	12.7	-18.1
ID	471	498	2,586	2,729	5.5
IL	104	103	474	483	1.9
IN	157	166	783	819	4.6
IA	200	209	1,006	1,035	2.9
KS	112	112	565	568	0.5
KY	102	95	324	306	-5.6
LA	33	30	94	86	-8.5
ME	32	32	142	141	-0.7
MD	68	60	274	255	-6.9
MA	16	15.5	69	65	-5.8
MI	313	323	1,682	1,785	6.1
MN	447	452	1,999	2,072	3.7
MS	24	22	83	76	-8.4
MO	114	115	449	437	-2.7
MT	19	18	93	85	-8.6
NE	60	61	267	277	3.7
NV	26	27	140	139	-0.7
NH	16.0	14.5	74	69	-6.8
NJ	11.5	10.5	46	41	-10.9
NM	337	360	1,773	1,805	1.8
NY	649	628	2,974	2,917	-1.9
NC	53	49	238	220	-7.6
ND	33	31	117	115	-1.7
OH	271	274	1,158	1,197	3.4
OK	75	70	293	290	-1.0
OR	121	117	547	533	-2.6
PA	557	550	2,579	2,630	2.0
RI	1.0	1.1	4.4	4.6	4.5
SC	17	17	67	67	
SD	81	81	358	379	5.9
TN	69	66	257	248	-3.5
TX	322	343	1,594	1,745	9.5
UT	85	86	413	450	9.0
VT	142	140	642	623	-3.0
VA	105	101	438	426	-2.7
WA	240	235	1,363	1,322	-3.0
WV	13	13	49	50	2.0
WI	1,238	1,245	5,652	5,782	2.3
WY	5.8	6.9	21.5	29.7	38.1
US ³	9,064	9,115	43,659	44,611	2.2

¹ Includes dry cows, excludes heifers not yet fresh.

² Excludes milk sucked by calves.

³ May not add due to rounding.

**Milk Cows and Production: By State and United States,
Preliminary January-March, 2006-2007**

State	Jan-Mar Milk Cows ¹		Jan-Mar Milk Production ²		Change From 2006
	2006	2007	2006	2007	
	<i>1,000 Head</i>	<i>1,000 Head</i>	<i>Million Pounds</i>	<i>Million Pounds</i>	<i>Percent</i>
AL	14	13	60	58	-3.3
AK	0.8	0.6	2.4	2.2	-8.3
AZ	171	175	1,059	1,064	0.5
AR	21.0	18.5	71	63	-11.3
CA	1,779	1,793	9,711	10,061	3.6
CO	106	115	605	620	2.5
CT	20	19	97	95	-2.1
DE	7	7	32.2	30.0	-6.8
FL	134	130	608	588	-3.3
GA	78	77	379	381	0.5
HI	4.5	3.6	15.3	12.1	-20.9
ID	474	503	2,551	2,729	7.0
IL	104	103	509	489	-3.9
IN	162	166	821	841	2.4
IA	201	210	1,032	1,070	3.7
KS	111	110	586	557	-4.9
KY	101	93	351	333	-5.1
LA	33	30	119	106	-10.9
ME	32	32	140	141	0.7
MD	67	60	290	268	-7.6
MA	16	15	72	65	-9.7
MI	315	325	1,737	1,825	5.1
MN	448	455	2,102	2,171	3.3
MS	23	22	100	91	-9.0
MO	114	115	487	444	-8.8
MT	19	18	90	83	-7.8
NE	60	60	277	284	2.5
NV	27	27	140	142	1.4
NH	15.5	14.0	77	72	-6.5
NJ	11.5	10.5	48	43	-10.4
NM	344	353	1,879	1,772	-5.7
NY	646	628	3,034	2,964	-2.3
NC	52	48	254	240	-5.5
ND	33	31	119	116	-2.5
OH	273	275	1,212	1,224	1.0
OK	75	70	311	296	-4.8
OR	119	112	555	548	-1.3
PA	556	549	2,723	2,663	-2.2
RI	1.1	1.1	4.6	4.3	-6.5
SC	17	17	76	84	10.5
SD	81	84	364	401	10.2
TN	69	66	284	270	-4.9
TX	329	347	1,825	1,853	1.5
UT	85	86	404	438	8.4
VT	143	140	663	627	-5.4
VA	103	100	462	446	-3.5
WA	237	235	1,353	1,341	-0.9
WV	13	13	50	50	
WI	1,240	1,246	5,779	5,904	2.2
WY	6.4	7.1	26.2	29.1	11.1
US ³	9,092	9,128	45,547	45,999	1.0

¹ Includes dry cows, excludes heifers not yet fresh.

² Excludes milk sucked by calves.

³ May not add due to rounding.

Reliability Statement

Survey Procedures: Primary data used to determine these estimates were obtained from a sample of producers. Individual States maintain a list of all known milk producers and information on the size of their herd. States use all known sources of producers to ensure that their lists are as complete as possible. Generally, all large producers and a sample of small producers are included in the survey. Questionnaires are mailed to producers near the end of the month to obtain data for the first day of the month. Additional reports are obtained by telephone, as needed, to supplement the mail response. Where feasible, States utilize state and federal administrative data, rather than conduct a monthly or quarterly survey, to estimate milk production. This eliminates duplication of data gathering by different government agencies. Indications of milk cow inventory are also obtained in the January and July Cattle Surveys.

Estimation Procedures: State offices prepare these estimates by using a combination of survey indications, historic trends, and any available administrative data. Individual State estimates are reviewed by the Agricultural Statistics Board for reasonableness.

Revision Policy: Milk production, rate per cow, and number of cows are subject to revision the following month for monthly States or the following quarter for the quarterly States. Normally, Federal Market Order sales are the main basis for revisions. However, data for all orders are not available in time for this revision. Estimates are again subject to revisions in February each year based on additional administrative data. In the event that additional changes are necessary, a third revision is possible in February the following year. Estimates are again reviewed after data from the five-year Census of Agriculture are available. No revisions are made after that date.

Reliability: Since all operations with dairy animals are not included in the sample, survey estimates are subject to sampling variability. Survey results are also subject to non-sampling errors such as omissions, duplications, and mistakes in reporting, recording, and processing the data. The effects of these errors cannot be measured directly. They are minimized through rigid quality controls in the data collection process and through a careful review of all reported data for consistency and reasonableness.

To assist users in evaluating the reliability of the estimates in this report, the "Root Mean Square Error" is shown for selected items on the next page. The "Root Mean Square Error" is a statistical measure based on past performance and is computed using the differences between first and final estimates. The "Root Mean Square Error" for milk cow inventory estimates over the past 10 January - March quarters is 0.2 percent. This means that chances are 2 out of 3 that the final January - March estimate will not be above or below the current estimate of 9.13 million head by more than 0.2 percent. Chances are 9 out of 10 that the difference will not exceed 0.3 percent.

Reliability of January-March Milk Estimates ¹

Item	Root Mean Square Error	90% Confidence Level		Difference Between First and Latest Estimates			Quarters	
				Average	Smallest	Largest	First Above Latest	First Below Latest
				Million Pounds	Million Pounds	Million Pounds	Number	Number
Milk Production	<i>Percent</i> 0.4	<i>Percent</i> 0.7	<i>Million Pounds</i> 322	<i>Million Pounds</i> 120	<i>Million Pounds</i> 10	<i>Million Pounds</i> 375	<i>Number</i> 4	<i>Number</i> 6
All Milk Cows	<i>Percent</i> 0.2	<i>Percent</i> 0.3	<i>1,000 Head</i> 27	<i>1,000 Head</i> 12	<i>1,000 Head</i> 1	<i>1,000 Head</i> 35	<i>Number</i> 6	<i>Number</i> 4

¹ Based on records for the past 10 January-March quarters.

Information Contacts

Listed below are the commodity specialists in the Livestock Branch of the National Agricultural Statistics Service to contact for additional information.

Dan Kerestes, Chief, Livestock Branch (202) 720-3570

Livestock Section

William Weaver, Head, Livestock Section (202) 720-3570
 Bruce Boess - Hogs and Pigs (202) 720-3106
 Shawn Clark - Dairy Products (202) 690-3236
 Jason Hardegree - Milk Production and Milk Cows (202) 720-3278
 Scott Hollis - Sheep & Lambs, Goats (202) 720-4751
 Mike Miller - Cattle, Cattle on Feed (202) 720-3040
 Katy Paulsen - Livestock Slaughter (515) 284-4340
 Charmaine Wilson - Dairy Products Prices (202) 690-2168

ACCESS TO REPORTS!!

For your convenience, there are several ways to obtain NASS reports, data products, and services:

INTERNET ACCESS

All NASS reports are available free of charge on the worldwide Internet. For access, connect to the Internet and go to the NASS Home Page at: www.nass.usda.gov.

E-MAIL SUBSCRIPTION

All NASS reports are available by subscription free of charge direct to your e-mail address. Starting with the NASS Home Page at www.nass.usda.gov, under the right navigation, *Receive reports by Email*, click on **National** or **State**. Follow the instructions on the screen.

PRINTED REPORTS OR DATA PRODUCTS

CALL OUR TOLL-FREE ORDER DESK: 800-999-6779 (U.S. and Canada)
Other areas, please call 703-605-6220 FAX: 703-605-6900
(Visa, MasterCard, check, or money order acceptable for payment.)

ASSISTANCE

For **assistance** with general agricultural statistics or further information about NASS or its products or services, contact the **Agricultural Statistics Hotline** at **800-727-9540**, 7:30 a.m. to 4:00 p.m. ET, or e-mail: nass@nass.usda.gov.

The U.S. Department of Agriculture (USDA) prohibits discrimination in all its programs and activities on the basis of race, color, national origin, age, disability, and where applicable, sex, marital status, familial status, parental status, religion, sexual orientation, genetic information, political beliefs, reprisal, or because all or a part of an individual's income is derived from any public assistance program. (Not all prohibited bases apply to all programs.) Persons with disabilities who require alternative means for communication of program information (Braille, large print, audiotape, etc.) should contact USDA's TARGET Center at (202) 720-2600 (voice and TDD).

To file a complaint of discrimination, write to USDA, Director, Office of Civil Rights, 1400 Independence Avenue, S.W., Washington, D.C. 20250-9410, or call (800) 795-3272 (voice) or (202) 720-6382 (TDD). USDA is an equal opportunity provider and employer.