



NASS

FACT FINDERS FOR AGRICULTURE
UNITED STATES DEPARTMENT OF AGRICULTURE

Washington, D.C.

Milk Production

Released June 18, 2007, by the National Agricultural Statistics Service (NASS), Agricultural Statistics Board, U.S. Department of Agriculture. For information on *Milk Production* call Jason Hardegree at 202-720-3278, office hours 7:30 a.m. to 4:00 p.m. ET.

May Milk Production Up 1.1 Percent

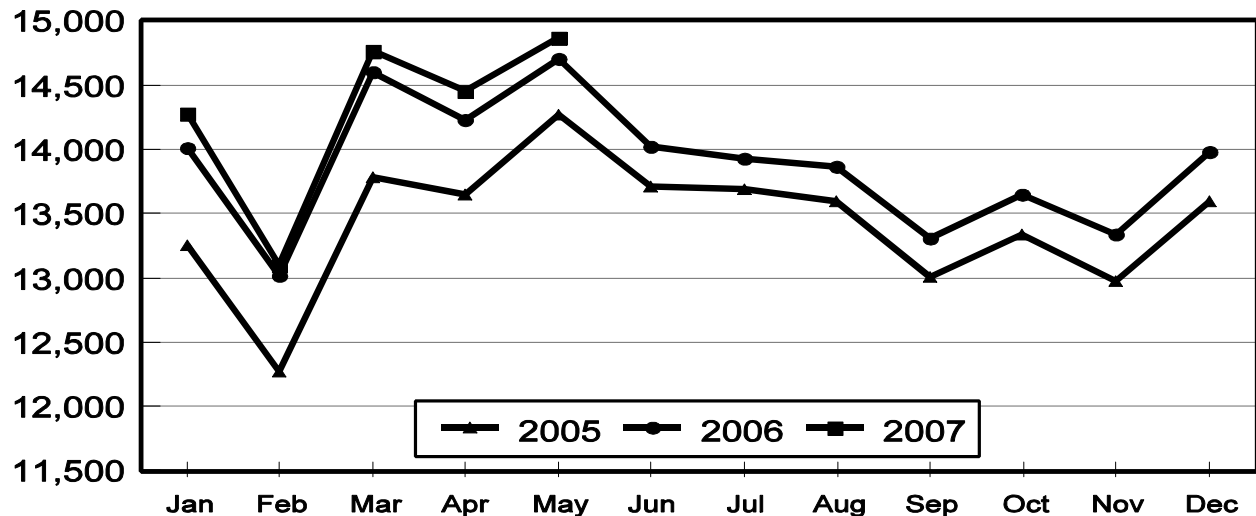
Milk production in the 23 major States during May totaled 14.9 billion pounds, up 1.1 percent from May 2006. April revised production, at 14.5 billion pounds, was up 1.7 percent from April 2006. The April revision represented an increase of 14 million pounds or 0.1 percent from last month's preliminary production estimate.

Production per cow in the 23 major States averaged 1,795 pounds for May, 13 pounds above May 2006.

The number of milk cows on farms in the 23 major States was 8.28 million head, 26,000 head more than May 2006, and 3,000 head more than April 2007.

Monthly Milk Production 23 States

Million Pounds



Milk Cows and Production: By Quarter, United States, 2006-2007¹

Quarter	Milk Cows ²		Milk Per Cow ³		Milk Production ³		
	2006	2007	2006	2007	2006	2007	Change From 2006
	<i>1,000 Head</i>	<i>1,000 Head</i>	<i>Pounds</i>	<i>Pounds</i>	<i>Million Pounds</i>	<i>Million Pounds</i>	<i>Percent</i>
Jan-Mar	9,092	9,129	5,010	5,040	45,547	46,010	1.0
Apr-Jun	9,128		5,141		46,930		
Jul-Sep	9,113		4,906		44,710		
Oct-Dec	9,115		4,894		44,611		
Annual	9,112		19,951		181,798		

¹ May not add due to rounding.

² Includes dry cows, excludes heifers not yet fresh.

³ Excludes milk sucked by calves.

Milk Cows and Production: By Month, 23 Selected States, 2006-2007¹

Month	Milk Cows ²		Milk Per Cow ³		Milk Production ³		
	2006	2007	2006	2007	2006	2007	Change from 2006
	<i>1,000 Head</i>	<i>1,000 Head</i>	<i>Pounds</i>	<i>Pounds</i>	<i>Million Pounds</i>	<i>Million Pounds</i>	<i>Percent</i>
Jan	8,198	8,280	1,711	1,724	14,027	14,276	1.8
Feb	8,206	8,277	1,586	1,582	13,018	13,098	0.6
Mar	8,224	8,285	1,775	1,783	14,599	14,771	1.2
Apr	8,240	8,280	1,726	1,746	14,222	14,457	1.7
May	8,257	8,283	1,782	1,795	14,712	14,867	1.1
Jun	8,269		1,697		14,033		
Jul	8,258		1,688		13,937		
Aug	8,255		1,676		13,838		
Sep	8,251		1,613		13,307		
Oct	8,255		1,652		13,637		
Nov	8,260		1,614		13,332		
Dec	8,276		1,690		13,983		
Annual	8,246		20,210		166,645		

¹ 2007 previous month revised.

² Includes dry cows, excludes heifers not yet fresh.

³ Excludes milk sucked by calves.

Estimated Milk Cows and Production: By Month, United States, 2006-2007¹

Month	Milk Cows ²		Milk Per Cow ³		Milk Production ³		
	2006	2007	2006	2007	2006	2007	Change From 2006
	<i>1,000 Head</i>	<i>1,000 Head</i>	<i>Pounds</i>	<i>Pounds</i>	<i>Million Pounds</i>	<i>Million Pounds</i>	<i>Percent</i>
Jan	9,081	9,129	1,690	1,707	15,343	15,585	1.6
Feb	9,088	9,126	1,567	1,567	14,238	14,300	0.4
Mar	9,106	9,133	1,753	1,766	15,966	16,125	1.0
Apr	9,116	9,121	1,705	1,727	15,538	15,750	1.4
May	9,129	9,119	1,760	1,776	16,068	16,195	0.8
Jun	9,139		1,676		15,324		
Jul	9,119		1,663		15,168		
Aug	9,114		1,653		15,061		
Sep	9,107		1,590		14,481		
Oct	9,107		1,631		14,857		
Nov	9,111		1,594		14,523		
Dec	9,126		1,669		15,231		
Annual	9,112		19,951		181,798		

¹ 2007 revised.

² Includes dry cows, excludes heifers not yet fresh.

³ Excludes milk sucked by calves.

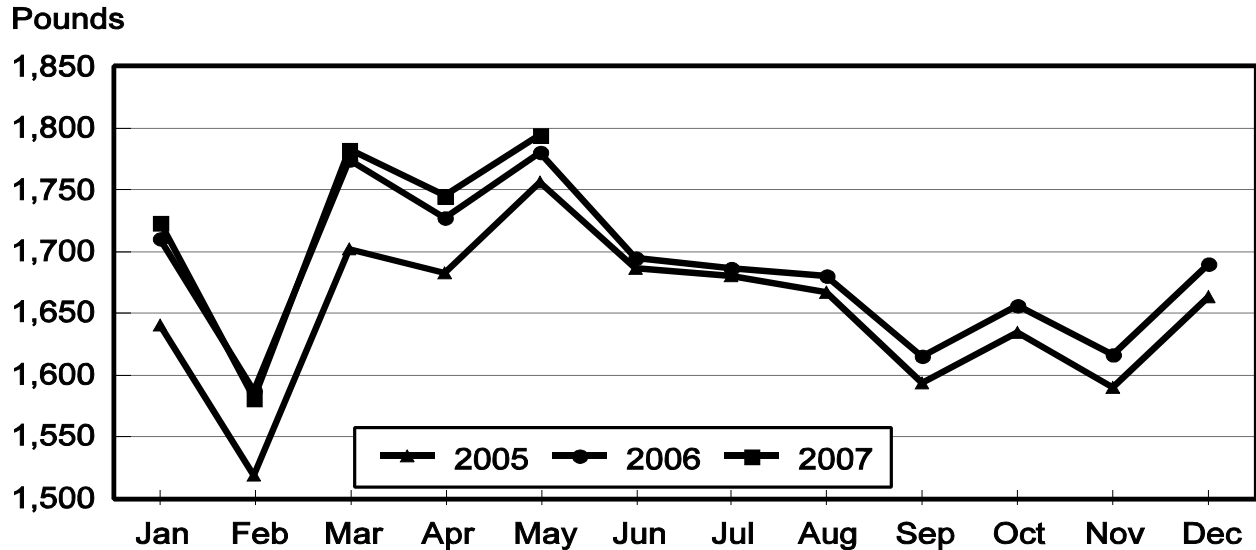
Milk Cows and Production: By State, May 2006-2007

State	Milk Cows ¹		Milk Per Cow ²		Milk Production ²		
	2006	2007	2006	2007	2006	2007	Change From 2006
	<i>1,000 Head</i>	<i>1,000 Head</i>	<i>Pounds</i>	<i>Pounds</i>	<i>Million Pounds</i>	<i>Million Pounds</i>	<i>Percent</i>
AZ	172	182	2,155	2,105	371	383	3.2
CA	1,785	1,800	1,895	1,930	3,383	3,474	2.7
CO	110	115	2,000	1,955	220	225	2.3
FL	133	128	1,520	1,600	202	205	1.5
ID	484	506	1,940	1,950	939	987	5.1
IL	103	103	1,690	1,670	174	172	-1.1
IN	166	168	1,750	1,770	291	297	2.1
IA	204	212	1,765	1,790	360	379	5.3
KS	113	110	1,870	1,820	211	200	-5.2
KY	98	92	1,220	1,280	120	118	-1.7
MI	320	330	1,920	1,960	614	647	5.4
MN	450	455	1,620	1,660	729	755	3.6
MO	116	114	1,470	1,380	171	157	-8.2
NM	356	341	1,980	1,870	705	638	-9.5
NY	643	626	1,660	1,690	1,067	1,058	-0.8
OH	273	275	1,610	1,620	440	446	1.4
OR	118	110	1,680	1,710	198	188	-5.1
PA	556	549	1,700	1,720	945	944	-0.1
TX	333	347	1,955	1,870	651	649	-0.3
VT	142	140	1,630	1,555	231	218	-5.6
VA	103	100	1,560	1,550	161	155	-3.7
WA	237	233	2,025	2,020	480	471	-1.9
WI	1,242	1,247	1,650	1,685	2,049	2,101	2.5
23-State Total	8,257	8,283	1,782	1,795	14,712	14,867	1.1

¹ Includes dry cows, excludes heifers not yet fresh.

² Excludes milk sucked by calves.

**Monthly Milk per Cow
23 States**



Milk Cows and Production: By State, April 2006-2007 ¹

State	Milk Cows ²		Milk per Cow ³		Milk Production ³		
	2006	2007	2006	2007	2006	2007	Change From 2006
	<i>1,000 Head</i>	<i>1,000 Head</i>	<i>Pounds</i>	<i>Pounds</i>	<i>Million Pounds</i>	<i>Million Pounds</i>	<i>Percent</i>
AZ	172	182	2,145	2,100	369	382	3.5
CA	1,784	1,797	1,855	1,920	3,309	3,450	4.3
CO	108	115	1,910	1,885	206	217	5.3
FL	133	129	1,540	1,580	205	204	-0.5
ID	478	503	1,850	1,860	884	936	5.9
IL	103	103	1,650	1,645	170	169	-0.6
IN	165	168	1,715	1,725	283	290	2.5
IA	203	211	1,735	1,730	352	365	3.7
KS	112	110	1,810	1,745	203	192	-5.4
KY	99	92	1,230	1,270	122	117	-4.1
MI	318	328	1,850	1,895	588	622	5.8
MN	450	455	1,575	1,610	709	733	3.4
MO	116	114	1,500	1,395	174	159	-8.6
NM	350	345	1,870	1,740	655	600	-8.4
NY	644	627	1,590	1,605	1,024	1,006	-1.8
OH	273	275	1,530	1,540	418	424	1.4
OR	118	110	1,630	1,645	192	181	-5.7
PA	557	550	1,650	1,690	919	930	1.2
TX	333	347	1,905	1,860	634	645	1.7
VT	143	140	1,560	1,495	223	209	-6.3
VA	103	100	1,555	1,550	160	155	-3.1
WA	237	233	1,950	1,970	462	459	-0.6
WI	1,241	1,246	1,580	1,615	1,961	2,012	2.6
23-State Total	8,240	8,280	1,726	1,746	14,222	14,457	1.7

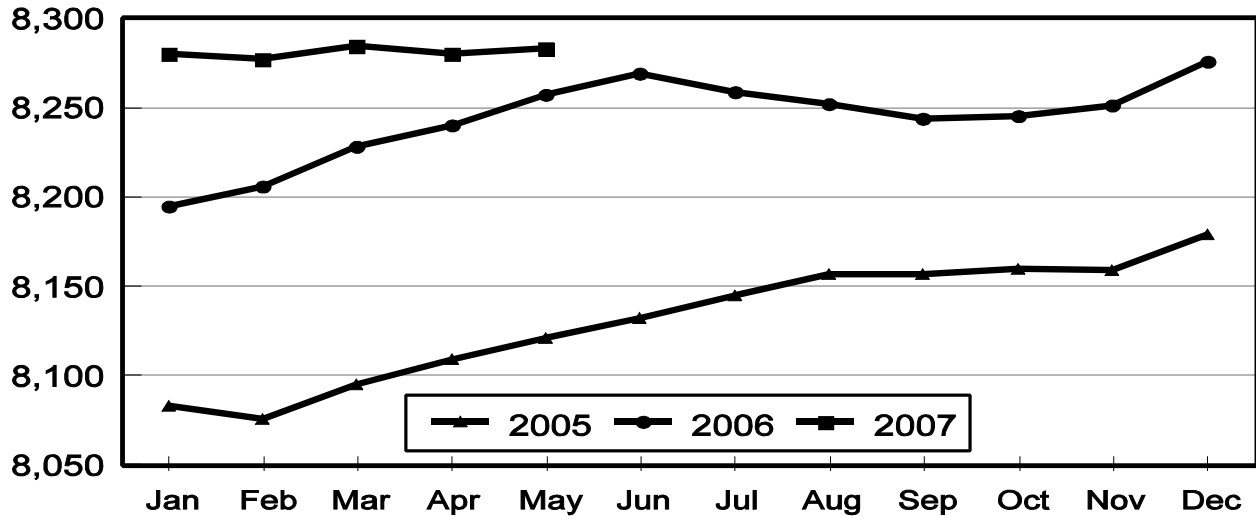
¹ 2007 revised.

² Includes dry cows, excludes heifers not yet fresh.

³ Excludes milk sucked by calves.

Monthly Milk Cows 23 States

Thousand Head



Reliability Statement

Survey Procedures: Primary data used to determine these estimates were obtained from a sample of producers. Individual States maintain a list of all known milk producers and information on the size of their herd. States use all known sources of producers to ensure that their lists are as complete as possible. Generally, all large producers and a sample of small producers are included in the survey. Questionnaires are mailed to producers near the end of the month to obtain data for the first day of the month. Additional reports are obtained by telephone, as needed, to supplement the mail response. Where feasible, States utilize state and federal administrative data, rather than conduct a monthly or quarterly survey, to estimate milk production. This eliminates duplication of data gathering by different government agencies. Indications of milk cow inventory are also obtained in the January and July Cattle Surveys.

Estimation Procedures: State offices prepare these estimates by using a combination of survey indications, historic trends, and any available administrative data. Individual State estimates are reviewed by the Agricultural Statistics Board for reasonableness.

Revision Policy: Milk production, rate per cow, and number of cows are subject to revision the following month for monthly States or the following quarter for the quarterly States. Normally, Federal Market Order sales are the main basis for revisions. However, data for all orders are not available in time for this revision. Estimates are again subject to revisions in February each year based on additional administrative data. In the event that additional changes are necessary, a third revision is possible in February the following year. Estimates are again reviewed after data from the five-year Census of Agriculture are available. No revisions are made after that date.

Reliability: Since all operations with dairy animals are not included in the sample, survey estimates are subject to sampling variability. Survey results are also subject to non-sampling errors such as omissions, duplications, and mistakes in reporting, recording, and processing the data. The effects of these errors cannot be measured directly. They are minimized through rigid quality controls in the data collection process and through a careful review of all reported data for consistency and reasonableness.

To assist users in evaluating the reliability of the estimates in this report, the "Root Mean Square Error" is shown for selected items on the next page. The "Root Mean Square Error" is a statistical measure based on past performance and is computed using the differences between first and final estimates. The "Root Mean Square Error" for milk cow inventory estimates over the past 10 January - March quarters is 0.2 percent. This means that chances are 2 out of 3 that the final January - March estimate will not be above or below the current estimate of 9.13 million head by more than 0.2 percent. Chances are 9 out of 10 that the difference will not exceed 0.3 percent.

Reliability of January-March Milk Estimates ¹

Item	Root Mean Square Error	90% Confidence Level		Difference Between First and Latest Estimates			Quarters	
				Average	Smallest	Largest	First Above Latest	First Below Latest
				Million Pounds	Million Pounds	Million Pounds	Number	Number
Milk Production	<i>Percent</i> 0.4	<i>Percent</i> 0.7	<i>Million Pounds</i> 322	<i>Million Pounds</i> 120	<i>Million Pounds</i> 10	<i>Million Pounds</i> 375	<i>Number</i> 4	<i>Number</i> 6
All Milk Cows	<i>Percent</i> 0.2	<i>Percent</i> 0.3	<i>1,000 Head</i> 27	<i>1,000 Head</i> 12	<i>1,000 Head</i> 1	<i>1,000 Head</i> 35	<i>Number</i> 6	<i>Number</i> 4

¹ Based on records for the past 10 January-March quarters.

Information Contacts

Listed below are the commodity specialists in the Livestock Branch of the National Agricultural Statistics Service to contact for additional information.

- Dan Kerestes, Chief, Livestock Branch (202) 720-3570
- William Weaver, Head, Livestock Section (202) 720-3570
 - Bruce Boess - Hogs and Pigs (202) 720-3106
 - Shawn Clark - Dairy Products (202) 690-3236
 - Jason Hardegree - Milk Production and Milk Cows (202) 720-3278
 - Benita Hodge - Livestock Slaughter (515) 284-4340
 - Scott Hollis - Sheep & Lambs, Goats (202) 720-4751
 - Mike Miller - Cattle, Cattle on Feed (202) 720-3040
 - Charmaine Wilson - Dairy Products Prices (202) 690-2168

ACCESS TO REPORTS!!

For your convenience, there are several ways to obtain NASS reports, data products, and services:

INTERNET ACCESS

All NASS reports are available free of charge on the worldwide Internet. For access, connect to the Internet and go to the NASS Home Page at: www.nass.usda.gov.

E-MAIL SUBSCRIPTION

All NASS reports are available by subscription free of charge direct to your e-mail address. Starting with the NASS Home Page at www.nass.usda.gov, under the right navigation, *Receive reports by Email*, click on **National** or **State**. Follow the instructions on the screen.

PRINTED REPORTS OR DATA PRODUCTS

CALL OUR TOLL-FREE ORDER DESK: 800-999-6779 (U.S. and Canada)
Other areas, please call 703-605-6220 FAX: 703-605-6900
(Visa, MasterCard, check, or money order acceptable for payment.)

ASSISTANCE

For **assistance** with general agricultural statistics or further information about NASS or its products or services, contact the **Agricultural Statistics Hotline** at **800-727-9540**, 7:30 a.m. to 4:00 p.m. ET, or e-mail: nass@nass.usda.gov.

The U.S. Department of Agriculture (USDA) prohibits discrimination in all its programs and activities on the basis of race, color, national origin, age, disability, and where applicable, sex, marital status, familial status, parental status, religion, sexual orientation, genetic information, political beliefs, reprisal, or because all or a part of an individual's income is derived from any public assistance program. (Not all prohibited bases apply to all programs.) Persons with disabilities who require alternative means for communication of program information (Braille, large print, audiotape, etc.) should contact USDA's TARGET Center at (202) 720-2600 (voice and TDD).

To file a complaint of discrimination, write to USDA, Director, Office of Civil Rights, 1400 Independence Avenue, S.W., Washington, D.C. 20250-9410, or call (800) 795-3272 (voice) or (202) 720-6382 (TDD). USDA is an equal opportunity provider and employer.