



# NASS

FACT FINDERS FOR AGRICULTURE  
UNITED STATES DEPARTMENT OF AGRICULTURE

Washington, D.C.

# Milk Production

Released July 18, 2007, by the National Agricultural Statistics Service (NASS), Agricultural Statistics Board, U.S. Department of Agriculture. For information on *Milk Production* call Jason Hardegree at 202-720-3278, office hours 7:30 a.m. to 4:00 p.m. ET.

## June Milk Production Up 1.2 Percent

**Milk production** in the 23 major States during June totaled 14.2 billion pounds, up 1.2 percent from June 2006. May revised production, at 14.9 billion pounds, was up 1.1 percent from May 2006. The May revision represented an increase of 7 million pounds from last month's preliminary production estimate.

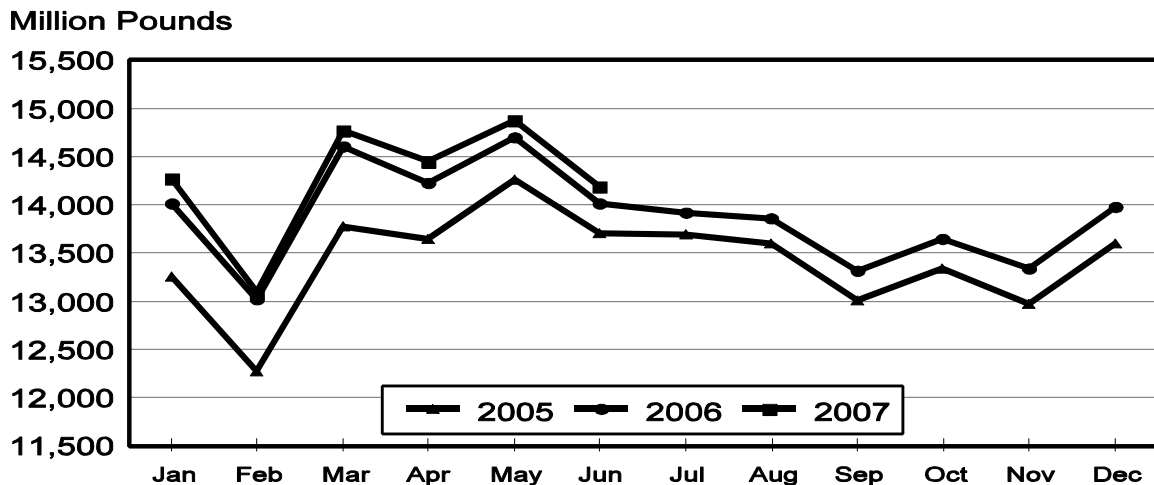
**Production per cow** in the 23 major States averaged 1,713 pounds for June, 16 pounds above June 2006.

**The number of milk cows** on farms in the 23 major States was 8.29 million head, 19,000 head more than June 2006, and 2,000 head more than May 2007.

## April - June Milk Production Up 1 Percent

Milk production in the U.S. during the April - June quarter totaled 47.4 billion pounds, up 1.1 percent from the April - June quarter last year. The average number of milk cows in the U.S. during the quarter was 9.13 million head, 2,000 head less than the same period last year.

## Monthly Milk Production 23 States



**Milk Cows and Production: By Quarter, United States, 2006-2007 <sup>1</sup>**

Quarter	Milk Cows <sup>2</sup>		Milk Per Cow <sup>3</sup>		Milk Production <sup>3</sup>		
	2006	2007	2006	2007	2006	2007	Change From 2006
	<i>1,000 Head</i>	<i>1,000 Head</i>	<i>Pounds</i>	<i>Pounds</i>	<i>Million Pounds</i>	<i>Million Pounds</i>	<i>Percent</i>
Jan-Mar	9,092	9,130	5,010	5,039	45,547	46,006	1.0
Apr-Jun	9,128	9,126	5,141	5,198	46,930	47,435	1.1
Jul-Sep	9,113		4,906		44,710		
Oct-Dec	9,115		4,894		44,611		
Annual	9,112		19,951		181,798		

<sup>1</sup> May not add due to rounding.

<sup>2</sup> Includes dry cows, excludes heifers not yet fresh.

<sup>3</sup> Excludes milk sucked by calves.

**Milk Cows and Production: By Month, 23 Selected States, 2006-2007 <sup>1</sup>**

Month	Milk Cows <sup>2</sup>		Milk Per Cow <sup>3</sup>		Milk Production <sup>3</sup>		
	2006	2007	2006	2007	2006	2007	Change from 2006
	<i>1,000 Head</i>	<i>1,000 Head</i>	<i>Pounds</i>	<i>Pounds</i>	<i>Million Pounds</i>	<i>Million Pounds</i>	<i>Percent</i>
Jan	8,198	8,280	1,711	1,724	14,027	14,276	1.8
Feb	8,206	8,277	1,586	1,582	13,018	13,098	0.6
Mar	8,224	8,285	1,775	1,783	14,599	14,771	1.2
Apr	8,240	8,280	1,726	1,746	14,222	14,457	1.7
May	8,257	8,286	1,782	1,795	14,712	14,874	1.1
Jun	8,269	8,288	1,697	1,713	14,033	14,198	1.2
Jul	8,258		1,688		13,937		
Aug	8,255		1,676		13,838		
Sep	8,251		1,613		13,307		
Oct	8,255		1,652		13,637		
Nov	8,260		1,614		13,332		
Dec	8,276		1,690		13,983		
Annual	8,246		20,210		166,645		

<sup>1</sup> 2007 previous month revised.

<sup>2</sup> Includes dry cows, excludes heifers not yet fresh.

<sup>3</sup> Excludes milk sucked by calves.

**Estimated Milk Cows and Production: By Month, United States, 2006-2007 <sup>1</sup>**

Month	Milk Cows <sup>2</sup>		Milk Per Cow <sup>3</sup>		Milk Production <sup>3</sup>		
	2006	2007	2006	2007	2006	2007	Change From 2006
	<i>1,000 Head</i>	<i>1,000 Head</i>	<i>Pounds</i>	<i>Pounds</i>	<i>Million Pounds</i>	<i>Million Pounds</i>	<i>Percent</i>
Jan	9,081	9,130	1,690	1,707	15,343	15,585	1.6
Feb	9,088	9,126	1,567	1,567	14,238	14,298	0.4
Mar	9,106	9,134	1,753	1,765	15,966	16,123	1.0
Apr	9,116	9,122	1,705	1,727	15,538	15,757	1.4
May	9,129	9,127	1,760	1,776	16,068	16,208	0.9
Jun	9,139	9,129	1,676	1,695	15,324	15,470	1.0
Jul	9,119		1,663		15,168		
Aug	9,114		1,653		15,061		
Sep	9,107		1,590		14,481		
Oct	9,107		1,631		14,857		
Nov	9,111		1,594		14,523		
Dec	9,126		1,669		15,231		
Annual	9,112		19,951		181,798		

<sup>1</sup> 2007 revised.

<sup>2</sup> Includes dry cows, excludes heifers not yet fresh.

<sup>3</sup> Excludes milk sucked by calves.

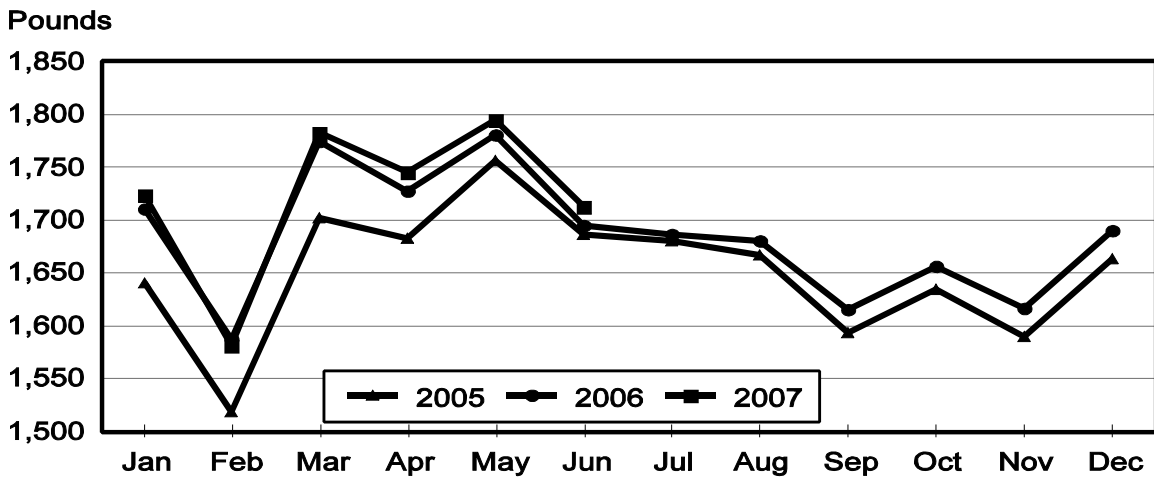
**Milk Cows and Production: By State, June 2006-2007**

State	Milk Cows <sup>1</sup>		Milk Per Cow <sup>2</sup>		Milk Production <sup>2</sup>		
	2006	2007	2006	2007	2006	2007	Change From 2006
	<i>1,000 Head</i>	<i>1,000 Head</i>	<i>Pounds</i>	<i>Pounds</i>	<i>Million Pounds</i>	<i>Million Pounds</i>	<i>Percent</i>
AZ	173	182	1,955	1,965	338	358	5.9
CA	1,786	1,804	1,795	1,850	3,206	3,337	4.1
CO	111	118	1,965	1,960	218	231	6.0
FL	132	127	1,415	1,500	187	191	2.1
ID	489	506	1,910	1,910	934	966	3.4
IL	103	103	1,590	1,550	164	160	-2.4
IN	166	167	1,670	1,675	277	280	1.1
IA	206	214	1,680	1,675	346	358	3.5
KS	113	109	1,770	1,745	200	190	-5.0
KY	98	90	1,090	1,140	107	103	-3.7
MI	322	332	1,865	1,885	601	626	4.2
MN	450	460	1,560	1,570	702	722	2.8
MO	116	112	1,320	1,240	153	139	-9.2
NM	360	335	1,875	1,815	675	608	-9.9
NY	640	626	1,595	1,620	1,021	1,014	-0.7
OH	274	276	1,470	1,520	403	420	4.2
OR	118	110	1,620	1,645	191	181	-5.2
PA	555	549	1,620	1,590	899	873	-2.9
TX	333	348	1,820	1,740	606	606	0.0
VT	141	139	1,545	1,510	218	210	-3.7
VA	103	100	1,415	1,440	146	144	-1.4
WA	237	234	1,960	1,970	465	461	-0.9
WI	1,243	1,247	1,590	1,620	1,976	2,020	2.2
23-State Total	8,269	8,288	1,697	1,713	14,033	14,198	1.2

<sup>1</sup> Includes dry cows, excludes heifers not yet fresh.

<sup>2</sup> Excludes milk sucked by calves.

**Monthly Milk per Cow  
23 States**



**Milk Cows and Production: By State, May 2006-2007 <sup>1</sup>**

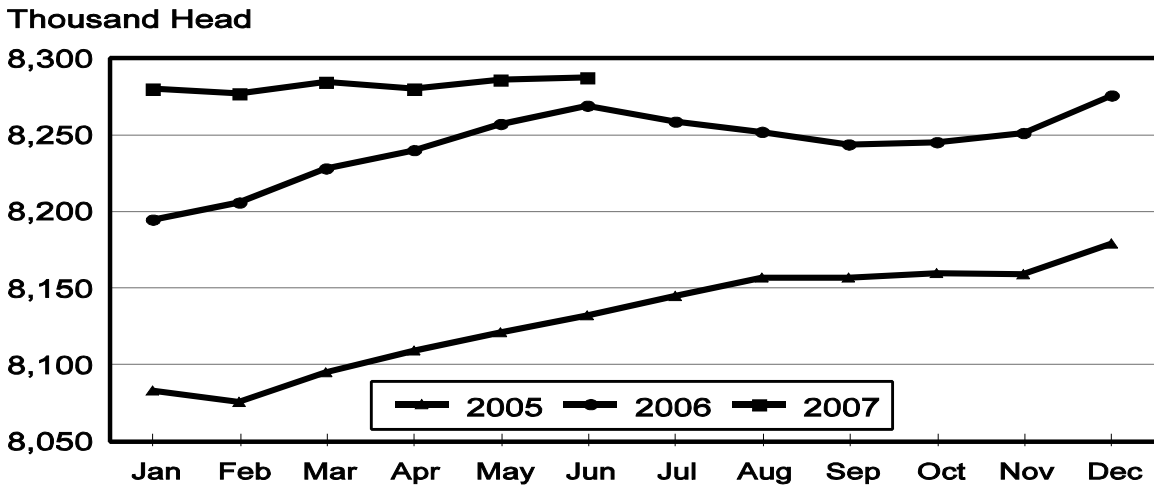
State	Milk Cows <sup>2</sup>		Milk per Cow <sup>3</sup>		Milk Production <sup>3</sup>		
	2006	2007	2006	2007	2006	2007	Change From 2006
	<i>1,000 Head</i>	<i>1,000 Head</i>	<i>Pounds</i>	<i>Pounds</i>	<i>Million Pounds</i>	<i>Million Pounds</i>	<i>Percent</i>
AZ	172	182	2,155	2,105	371	383	3.2
CA	1,785	1,800	1,895	1,930	3,383	3,474	2.7
CO	110	116	2,000	1,990	220	231	5.0
FL	133	128	1,520	1,640	202	210	4.0
ID	484	506	1,940	1,930	939	977	4.0
IL	103	103	1,690	1,670	174	172	-1.1
IN	166	168	1,750	1,770	291	297	2.1
IA	204	212	1,765	1,790	360	379	5.3
KS	113	110	1,870	1,820	211	200	-5.2
KY	98	91	1,220	1,260	120	115	-4.2
MI	320	330	1,920	1,960	614	647	5.4
MN	450	458	1,620	1,665	729	763	4.7
MO	116	114	1,470	1,380	171	157	-8.2
NM	356	341	1,980	1,870	705	638	-9.5
NY	643	626	1,660	1,690	1,067	1,058	-0.8
OH	273	275	1,610	1,620	440	446	1.4
OR	118	110	1,680	1,690	198	186	-6.1
PA	556	549	1,700	1,720	945	944	-0.1
TX	333	347	1,955	1,870	651	649	-0.3
VT	142	140	1,630	1,555	231	218	-5.6
VA	103	100	1,560	1,570	161	157	-2.5
WA	237	233	2,025	2,025	480	472	-1.7
WI	1,242	1,247	1,650	1,685	2,049	2,101	2.5
23-State Total	8,257	8,286	1,782	1,795	14,712	14,874	1.1

<sup>1</sup> 2007 revised.

<sup>2</sup> Includes dry cows, excludes heifers not yet fresh.

<sup>3</sup> Excludes milk sucked by calves.

**Monthly Milk Cows  
23 States**



**Milk Cows and Production: By State and United States,  
Revised January-March, 2006-2007**

State	Jan-Mar Milk Cows <sup>1</sup>		Jan-Mar Milk Production <sup>2</sup>		Change From 2006
	2006	2007	2006	2007	
	<i>1,000 Head</i>	<i>1,000 Head</i>	<i>Million Pounds</i>	<i>Million Pounds</i>	<i>Percent</i>
AL	14	13	60	58	-3.3
AK	0.8	0.6	2.4	2.3	-4.2
AZ	171	176	1,059	1,072	1.2
AR	21	18	71	61	-14.1
CA	1,779	1,793	9,711	10,070	3.7
CO	106	115	605	620	2.5
CT	20	19	97	95	-2.1
DE	7	7	32.2	30.0	-6.8
FL	134	130	608	584	-3.9
GA	78	77	379	381	0.5
HI	4.5	3.6	15.3	12.1	-20.9
ID	474	503	2,551	2,724	6.8
IL	104	103	509	489	-3.9
IN	162	166	821	841	2.4
IA	201	210	1,032	1,070	3.7
KS	111	110	586	557	-4.9
KY	101	93	351	333	-5.1
LA	33	30	119	106	-10.9
ME	32	32	140	141	0.7
MD	67	60	290	274	-5.5
MA	16	15.0	72	65	-9.7
MI	315	325	1,737	1,825	5.1
MN	448	455	2,102	2,171	3.3
MS	23	22	100	94	-6.0
MO	114	115	487	444	-8.8
MT	19	18	90	84	-6.7
NE	60	60	277	279	0.7
NV	27	27	140	142	1.4
NH	15.5	14.0	77	72	-6.5
NJ	11.5	10.5	48	43	-10.4
NM	344	353	1,879	1,772	-5.7
NY	646	628	3,034	2,964	-2.3
NC	52	48	254	242	-4.7
ND	33	31	119	116	-2.5
OH	273	275	1,212	1,226	1.2
OK	75	70	311	296	-4.8
OR	119	112	555	546	-1.6
PA	556	549	2,723	2,663	-2.2
RI	1.1	1.1	4.6	4.3	-6.5
SC	17	18	76	87	14.5
SD	81	84	364	401	10.2
TN	69	66	284	270	-4.9
TX	329	347	1,825	1,853	1.5
UT	85	86	404	426	5.4
VT	143	140	663	627	-5.4
VA	103	100	462	448	-3.0
WA	237	235	1,353	1,342	-0.8
WV	13	13	50	50	
WI	1,240	1,246	5,779	5,904	2.2
WY	6.4	7.1	26.2	29.1	11.1
US <sup>3</sup>	9,092	9,130	45,547	46,006	1.0

<sup>1</sup> Includes dry cows, excludes heifers not yet fresh.

<sup>2</sup> Excludes milk sucked by calves.

<sup>3</sup> May not add due to rounding.

**Milk Cows and Production: By State and United States,  
Preliminary April-June, 2006-2007**

State	Apr-Jun Milk Cows <sup>1</sup>		Apr-Jun Milk Production <sup>2</sup>		Change From 2006
	2006	2007	2006	2007	
	<i>1,000 Head</i>	<i>1,000 Head</i>	<i>Million Pounds</i>	<i>Million Pounds</i>	<i>Percent</i>
AL	14	13	56	54	-3.6
AK	0.8	0.6	2.5	2.1	-16.0
AZ	172	182	1,078	1,123	4.2
AR	20.0	17.5	71	60	-15.5
CA	1,785	1,800	9,898	10,261	3.7
CO	110	116	644	679	5.4
CT	20	19	95	94	-1.1
DE	7	7	30.8	27.9	-9.4
FL	133	128	594	605	1.9
GA	77	77	383	388	1.3
HI	4.4	3.2	14.8	10.0	-32.4
ID	484	505	2,757	2,879	4.4
IL	103	103	508	501	-1.4
IN	166	168	851	867	1.9
IA	204	212	1,058	1,102	4.2
KS	113	110	614	582	-5.2
KY	98	91	349	335	-4.0
LA	32	29	111	98	-11.7
ME	32	32	147	147	
MD	66	59	290	270	-6.9
MA	16	15	73	65	-11.0
MI	320	330	1,803	1,895	5.1
MN	450	458	2,140	2,218	3.6
MS	23	21	94	90	-4.3
MO	116	113	498	455	-8.6
MT	19	18	92	85	-7.6
NE	61	59	289	277	-4.2
NV	27	27	140	150	7.1
NH	15.0	14.0	76	74	-2.6
NJ	11.0	10.5	47	44	-6.4
NM	355	340	2,035	1,846	-9.3
NY	642	626	3,112	3,078	-1.1
NC	51	48	253	242	-4.3
ND	32	30	120	117	-2.5
OH	273	275	1,261	1,290	2.3
OK	74	69	313	295	-5.8
OR	118	110	581	548	-5.7
PA	556	549	2,763	2,747	-0.6
RI	1.1	1.1	5.0	4.6	-8.0
SC	17	19	77	87	13.0
SD	81	85	382	420	9.9
TN	67	64	284	272	-4.2
TX	333	347	1,891	1,900	0.5
UT	85	85	435	447	2.8
VT	142	140	672	637	-5.2
VA	103	100	467	456	-2.4
WA	237	233	1,407	1,392	-1.1
WV	13	13	51	51	
WI	1,242	1,247	5,986	6,133	2.5
WY	6.7	7.2	30.8	34.2	11.0
US <sup>3</sup>	9,128	9,126	46,930	47,435	1.1

<sup>1</sup> Includes dry cows, excludes heifers not yet fresh.

<sup>2</sup> Excludes milk sucked by calves.

<sup>3</sup> May not add due to rounding.

## Reliability Statement

**Survey Procedures:** Primary data used to determine these estimates were obtained from a sample of producers. Individual States maintain a list of all known milk producers and information on the size of their herd. States use all known sources of producers to ensure that their lists are as complete as possible. Generally, all large producers and a sample of small producers are included in the survey. Questionnaires are mailed to producers near the end of the month to obtain data for the first day of the month. Additional reports are obtained by telephone, as needed, to supplement the mail response. Where feasible, States utilize state and federal administrative data, rather than conduct a monthly or quarterly survey, to estimate milk production. This eliminates duplication of data gathering by different government agencies. Indications of milk cow inventory are also obtained in the January and July Cattle Surveys.

**Estimation Procedures:** State offices prepare these estimates by using a combination of survey indications, historic trends, and any available administrative data. Individual State estimates are reviewed by the Agricultural Statistics Board for reasonableness.

**Revision Policy:** Milk production, rate per cow, and number of cows are subject to revision the following month for monthly States or the following quarter for the quarterly States. Normally, Federal Market Order sales are the main basis for revisions. However, data for all orders are not available in time for this revision. Estimates are again subject to revisions in February each year based on additional administrative data. In the event that additional changes are necessary, a third revision is possible in February the following year. Estimates are again reviewed after data from the five-year Census of Agriculture are available. No revisions are made after that date.

**Reliability:** Since all operations with dairy animals are not included in the sample, survey estimates are subject to sampling variability. Survey results are also subject to non-sampling errors such as omissions, duplications, and mistakes in reporting, recording, and processing the data. The effects of these errors cannot be measured directly. They are minimized through rigid quality controls in the data collection process and through a careful review of all reported data for consistency and reasonableness.

To assist users in evaluating the reliability of the estimates in this report, the "Root Mean Square Error" is shown for selected items on the next page. The "Root Mean Square Error" is a statistical measure based on past performance and is computed using the differences between first and final estimates. The "Root Mean Square Error" for milk cow inventory estimates over the past 10 April - June quarters is 0.2 percent. This means that chances are 2 out of 3 that the final April - June estimate will not be above or below the current estimate of 9.13 million head by more than 0.2 percent. Chances are 9 out of 10 that the difference will not exceed 0.3 percent.

**Reliability of April-June Milk Estimates <sup>1</sup>**

Item	Root Mean Square Error	90% Confidence Level		Difference Between First and Latest Estimates			Quarters	
				Average	Smallest	Largest	First Above Latest	First Below Latest
				Million Pounds	Million Pounds	Million Pounds	Number	Number
Milk Production	<i>Percent</i> 0.3	<i>Percent</i> 0.6	<i>Million Pounds</i> 285	<i>Million Pounds</i> 102	<i>Million Pounds</i> 3	<i>Million Pounds</i> 244	<i>Number</i> 3	<i>Number</i> 7
All Milk Cows	<i>Percent</i> 0.2	<i>Percent</i> 0.3	<i>1,000 Head</i> 27	<i>1,000 Head</i> 11	<i>1,000 Head</i> 0	<i>1,000 Head</i> 34	<i>Number</i> 5	<i>Number</i> 4

<sup>1</sup> Based on records for the past 10 April-June quarters.

**Information Contacts**

Listed below are the commodity specialists in the Livestock Branch of the National Agricultural Statistics Service to contact for additional information.

- Dan Kerestes, Chief, Livestock Branch ..... (202) 720-3570
- Shawn Clark, Head, Livestock Section ..... (202) 720-3570
  - Bruce Boess - Hogs and Pigs ..... (202) 720-3106
  - Shawn Clark - Dairy Products ..... (202) 690-3236
  - Jason Hardegree - Milk Production and Milk Cows ..... (202) 720-3278
  - Scott Hollis - Sheep & Lambs, Goats & Kids ..... (202) 720-4751
  - Mike Miller - Cattle, Cattle on Feed ..... (202) 720-3040
  - Benita Hodge - Livestock Slaughter ..... (515) 284-4340
  - Charmaine Wilson - Dairy Products Prices ..... (202) 690-2168



## ACCESS TO REPORTS!!

---

For your convenience, there are several ways to obtain NASS reports, data products, and services:

### INTERNET ACCESS

All NASS reports are available free of charge on the worldwide Internet. For access, connect to the Internet and go to the NASS Home Page at: [www.nass.usda.gov](http://www.nass.usda.gov).

### E-MAIL SUBSCRIPTION

All NASS reports are available by subscription free of charge direct to your e-mail address. Starting with the NASS Home Page at [www.nass.usda.gov](http://www.nass.usda.gov), under the right navigation, *Receive reports by Email*, click on **National** or **State**. Follow the instructions on the screen.

-----

### PRINTED REPORTS OR DATA PRODUCTS

**CALL OUR TOLL-FREE ORDER DESK: 800-999-6779 (U.S. and Canada)**  
**Other areas, please call 703-605-6220      FAX: 703-605-6900**  
**(Visa, MasterCard, check, or money order acceptable for payment.)**

-----

### ASSISTANCE

For **assistance** with general agricultural statistics or further information about NASS or its products or services, contact the **Agricultural Statistics Hotline** at **800-727-9540**, 7:30 a.m. to 4:00 p.m. ET, or e-mail: [nass@nass.usda.gov](mailto:nass@nass.usda.gov).

The U.S. Department of Agriculture (USDA) prohibits discrimination in all its programs and activities on the basis of race, color, national origin, age, disability, and where applicable, sex, marital status, familial status, parental status, religion, sexual orientation, genetic information, political beliefs, reprisal, or because all or a part of an individual's income is derived from any public assistance program. (Not all prohibited bases apply to all programs.) Persons with disabilities who require alternative means for communication of program information (Braille, large print, audiotape, etc.) should contact USDA's TARGET Center at (202) 720-2600 (voice and TDD).

To file a complaint of discrimination, write to USDA, Director, Office of Civil Rights, 1400 Independence Avenue, S.W., Washington, D.C. 20250-9410, or call (800) 795-3272 (voice) or (202) 720-6382 (TDD). USDA is an equal opportunity provider and employer.