

Milk Production

Released October 18, 2007, by the National Agricultural Statistics Service (NASS), Agricultural Statistics Board, U.S. Department of Agriculture. For information on *Milk Production* call Jason Hardegreer at 202-720-3278, office hours 7:30 a.m. to 4:00 p.m. ET.

September Milk Production up 3.1 Percent

Milk production in the 23 major States during September totaled 13.7 billion pounds, up 3.1 percent from September 2006. August production, unrevised at 14.3 billion pounds, was up 3.6 percent from August 2006.

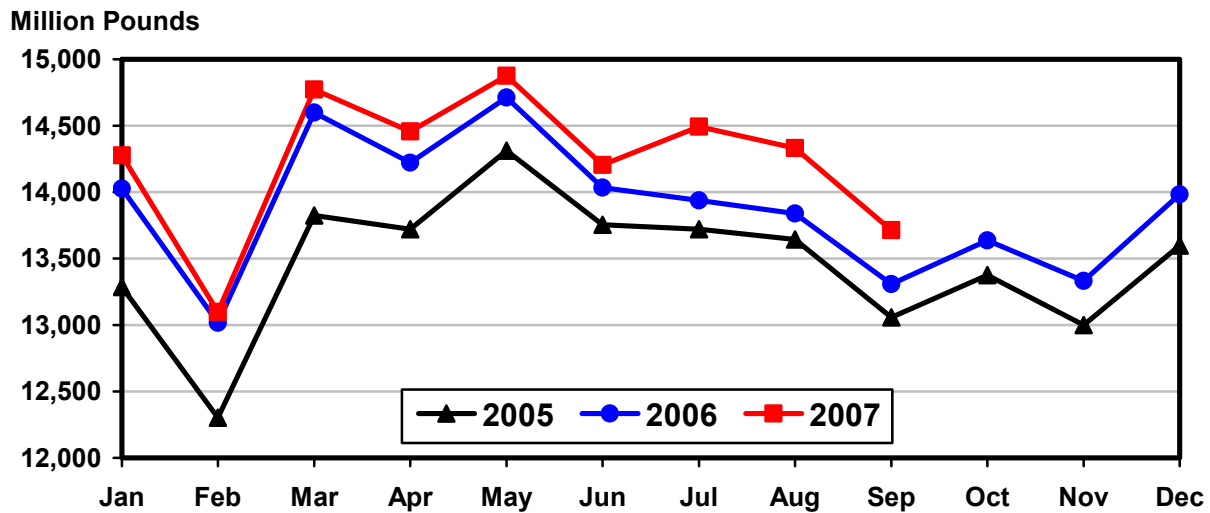
Production per cow in the 23 major States averaged 1,644 pounds for September, 31 pounds above September 2006.

The number of milk cows on farms in the 23 major States was 8.34 million head, 91,000 head more than September 2006, and 12,000 head more than August 2007.

July - September Milk Production up 3.1 Percent

Milk production in the U.S. during the July - September quarter totaled 46.1 billion pounds, up 3.1 percent from the July - September quarter last year. The average number of milk cows in the U.S. during the quarter was 9.16 million head, 44,000 head more than the same period last year.

Monthly Milk Production 23 States



Milk Cows and Production: By Quarter, United States, 2006-2007¹

Quarter	Milk Cows ²		Milk Per Cow ³		Milk Production ³		
	2006	2007	2006	2007	2006	2007	Change From 2006
	<i>1,000 Head</i>	<i>1,000 Head</i>	<i>Pounds</i>	<i>Pounds</i>	<i>Million Pounds</i>	<i>Million Pounds</i>	<i>Percent</i>
Jan-Mar	9,092	9,130	5,010	5,039	45,547	46,006	1.0
Apr-Jun	9,128	9,129	5,141	5,195	46,930	47,429	1.1
Jul-Sep	9,113	9,157	4,906	5,036	44,710	46,114	3.1
Oct-Dec	9,115		4,894		44,611		
Annual	9,112		19,951		181,798		

¹ May not add due to rounding.

² Includes dry cows, excludes heifers not yet fresh.

³ Excludes milk sucked by calves.

Milk Cows and Production: By Month, 23 Selected States, 2006-2007¹

Month	Milk Cows ²		Milk Per Cow ³		Milk Production ³		
	2006	2007	2006	2007	2006	2007	Change from 2006
	<i>1,000 Head</i>	<i>1,000 Head</i>	<i>Pounds</i>	<i>Pounds</i>	<i>Million Pounds</i>	<i>Million Pounds</i>	<i>Percent</i>
Jan	8,198	8,280	1,711	1,724	14,027	14,276	1.8
Feb	8,206	8,277	1,586	1,582	13,018	13,098	0.6
Mar	8,224	8,285	1,775	1,783	14,599	14,771	1.2
Apr	8,240	8,280	1,726	1,746	14,222	14,457	1.7
May	8,257	8,286	1,782	1,795	14,712	14,874	1.1
Jun	8,269	8,294	1,697	1,713	14,033	14,204	1.2
Jul	8,258	8,316	1,688	1,743	13,937	14,493	4.0
Aug	8,255	8,330	1,676	1,721	13,838	14,332	3.6
Sep	8,251	8,342	1,613	1,644	13,307	13,715	3.1
Oct	8,255		1,652		13,637		
Nov	8,260		1,614		13,332		
Dec	8,276		1,690		13,983		
Annual	8,246		20,210		166,645		

¹ 2007 previous month revised.

² Includes dry cows, excludes heifers not yet fresh.

³ Excludes milk sucked by calves.

Estimated Milk Cows and Production: By Month, United States, 2006-2007¹

Month	Milk Cows ²		Milk Per Cow ³		Milk Production ³		
	2006	2007	2006	2007	2006	2007	Change From 2006
	<i>1,000 Head</i>	<i>1,000 Head</i>	<i>Pounds</i>	<i>Pounds</i>	<i>Million Pounds</i>	<i>Million Pounds</i>	<i>Percent</i>
Jan	9,081	9,130	1,690	1,707	15,343	15,585	1.6
Feb	9,088	9,126	1,567	1,567	14,238	14,298	0.4
Mar	9,106	9,134	1,753	1,765	15,966	16,123	1.0
Apr	9,116	9,122	1,705	1,728	15,538	15,764	1.5
May	9,129	9,128	1,760	1,775	16,068	16,205	0.9
Jun	9,139	9,136	1,676	1,692	15,324	15,460	0.9
Jul	9,119	9,150	1,663	1,718	15,168	15,724	3.7
Aug	9,114	9,157	1,653	1,697	15,061	15,536	3.2
Sep	9,107	9,163	1,590	1,621	14,481	14,854	2.6
Oct	9,107		1,631		14,857		
Nov	9,111		1,594		14,523		
Dec	9,126		1,669		15,231		
Annual	9,112		19,951		181,798		

¹ 2007 revised.

² Includes dry cows, excludes heifers not yet fresh.

³ Excludes milk sucked by calves.

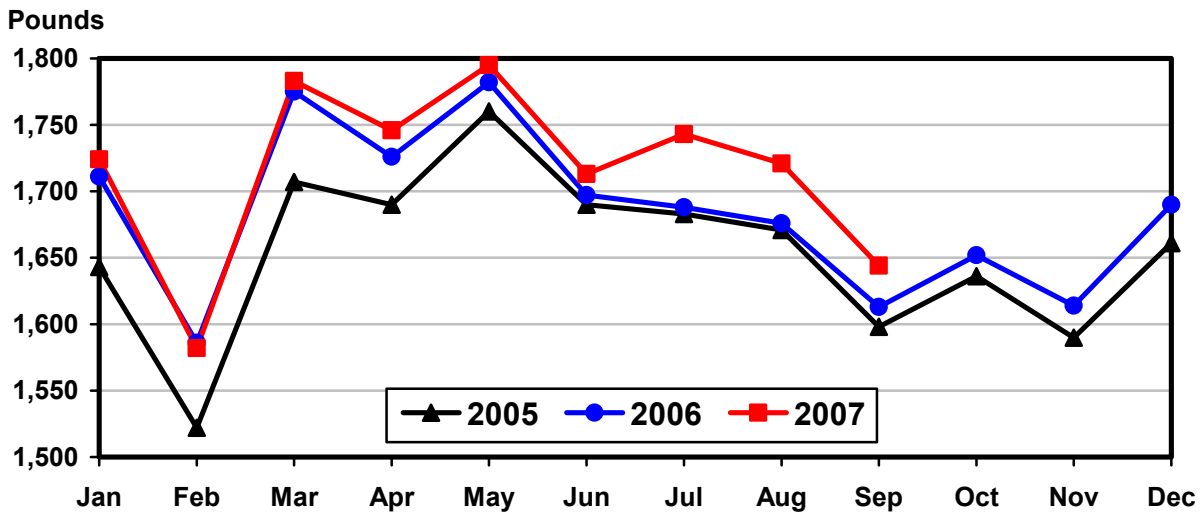
Milk Cows and Production: By State, September 2006-2007

State	Milk Cows ¹		Milk Per Cow ²		Milk Production ²		
	2006	2007	2006	2007	2006	2007	Change From 2006
	<i>1,000 Head</i>	<i>1,000 Head</i>	<i>Pounds</i>	<i>Pounds</i>	<i>Million Pounds</i>	<i>Million Pounds</i>	<i>Percent</i>
AZ	174	182	1,620	1,705	282	310	9.9
CA	1,773	1,822	1,775	1,785	3,147	3,252	3.3
CO	112	120	1,910	1,900	214	228	6.5
FL	129	125	1,110	1,160	143	145	1.4
ID	497	521	1,860	1,880	924	979	6.0
IL	103	103	1,485	1,440	153	148	-3.3
IN	165	166	1,595	1,635	263	271	3.0
IA	208	215	1,560	1,590	324	342	5.6
KS	113	108	1,630	1,665	184	180	-2.2
KY	96	88	1,010	1,020	97	90	-7.2
MI	320	340	1,800	1,830	576	622	8.0
MN	450	463	1,470	1,470	662	681	2.9
MO	115	109	1,180	1,140	136	124	-8.8
NM	360	336	1,650	1,800	594	605	1.9
NY	631	626	1,515	1,570	956	983	2.8
OH	274	277	1,430	1,440	392	399	1.8
OR	117	115	1,580	1,565	185	180	-2.7
PA	553	550	1,560	1,550	863	853	-1.2
TX	338	348	1,585	1,640	536	571	6.5
VT	140	140	1,460	1,465	204	205	0.5
VA	102	100	1,320	1,365	135	137	1.5
WA	237	240	1,880	1,905	446	457	2.5
WI	1,244	1,248	1,520	1,565	1,891	1,953	3.3
23-State Total	8,251	8,342	1,613	1,644	13,307	13,715	3.1

¹ Includes dry cows, excludes heifers not yet fresh.

² Excludes milk sucked by calves.

Monthly Milk per Cow 23 States



Milk Cows and Production: By State, August 2006-2007 ¹

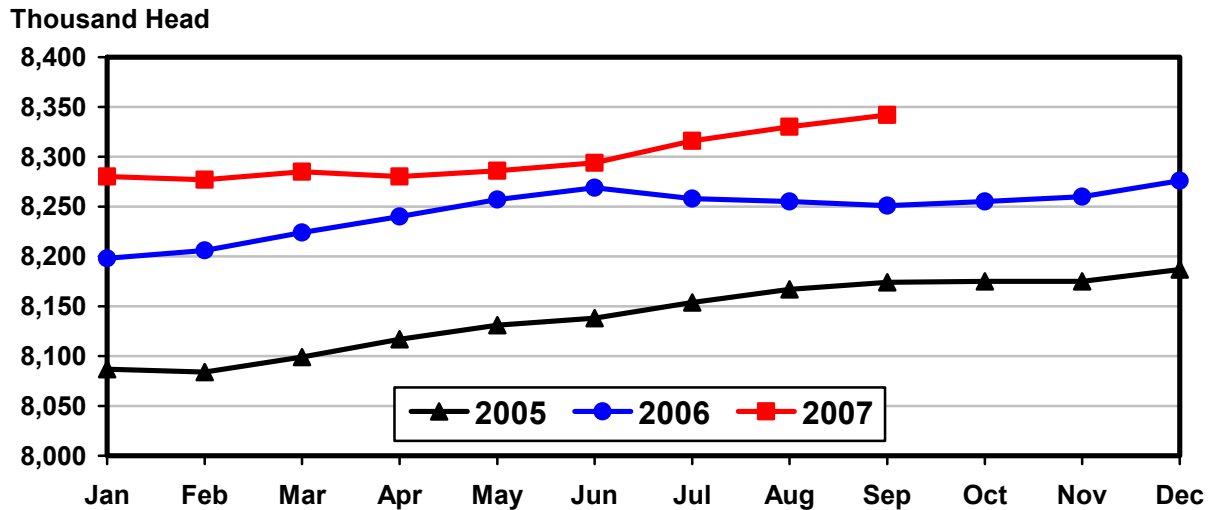
State	Milk Cows ²		Milk per Cow ³		Milk Production ³		Change From 2006
	2006	2007	2006	2007	2006	2007	
	<i>1,000 Head</i>	<i>1,000 Head</i>	<i>Pounds</i>	<i>Pounds</i>	<i>Million Pounds</i>	<i>Million Pounds</i>	<i>Percent</i>
AZ	173	181	1,655	1,760	286	319	11.5
CA	1,770	1,818	1,860	1,900	3,292	3,454	4.9
CO	112	119	1,950	1,975	218	235	7.8
FL	130	126	1,180	1,215	153	153	
ID	497	520	1,960	1,970	974	1,024	5.1
IL	103	103	1,550	1,480	160	152	-5.0
IN	165	166	1,625	1,670	268	277	3.4
IA	207	215	1,620	1,640	335	353	5.4
KS	113	108	1,740	1,715	197	185	-6.1
KY	96	88	990	1,035	95	91	-4.2
MI	320	338	1,840	1,910	589	646	9.7
MN	450	463	1,525	1,555	686	720	5.0
MO	115	109	1,185	1,170	136	128	-5.9
NM	362	335	1,780	1,855	644	621	-3.6
NY	634	625	1,580	1,640	1,002	1,025	2.3
OH	274	276	1,440	1,470	395	406	2.8
OR	118	114	1,640	1,650	194	188	-3.1
PA	554	551	1,580	1,620	875	893	2.1
TX	337	348	1,655	1,670	558	581	4.1
VT	141	139	1,510	1,540	213	214	0.5
VA	102	100	1,350	1,400	138	140	1.4
WA	238	240	1,980	2,000	471	480	1.9
WI	1,244	1,248	1,575	1,640	1,959	2,047	4.5
23-State Total	8,255	8,330	1,676	1,721	13,838	14,332	3.6

¹ 2007 revised.

² Includes dry cows, excludes heifers not yet fresh.

³ Excludes milk sucked by calves.

Monthly Milk Cows 23 States



**Milk Cows and Production: By State and United States,
Revised April-June, 2006-2007**

State	Apr-Jun Milk Cows ¹		Apr-Jun Milk Production ²		Change From 2006
	2006	2007	2006	2007	
	<i>1,000 Head</i>	<i>1,000 Head</i>	<i>Million Pounds</i>	<i>Million Pounds</i>	<i>Percent</i>
AL	14	13	56	54	-3.6
AK	0.8	0.6	2.5	2.2	-12.0
AZ	172	182	1,078	1,123	4.2
AR	20.0	17.5	71	60	-15.5
CA	1,785	1,801	9,898	10,263	3.7
CO	110	116	644	679	5.4
CT	20	19	95	94	-1.1
DE	7	7	30.8	30.0	-2.6
FL	133	128	594	599	0.8
GA	77	77	383	388	1.3
HI	4.4	3.2	14.8	10.0	-32.4
ID	484	506	2,757	2,883	4.6
IL	103	103	508	501	-1.4
IN	166	168	851	867	1.9
IA	204	212	1,058	1,102	4.2
KS	113	110	614	582	-5.2
KY	98	91	349	337	-3.4
LA	32	29	111	98	-11.7
ME	32	32	147	147	
MD	66	59	290	264	-9.0
MA	16	15	73	65	-11.0
MI	320	330	1,803	1,895	5.1
MN	450	458	2,140	2,216	3.6
MS	23	21	94	90	-4.3
MO	116	113	498	455	-8.6
MT	19	18	92	87	-5.4
NE	61	59	289	275	-4.8
NV	27	27	140	150	7.1
NH	15	14	76	74	-2.6
NJ	11.0	10.5	47	44	-6.4
NM	355	340	2,035	1,846	-9.3
NY	642	626	3,112	3,078	-1.1
NC	51	48	253	242	-4.3
ND	32	30	120	117	-2.5
OH	273	275	1,261	1,290	2.3
OK	74	69	313	295	-5.8
OR	118	111	581	553	-4.8
PA	556	549	2,763	2,747	-0.6
RI	1.1	1.1	5.0	4.6	-8.0
SC	17.0	18.5	77	88	14.3
SD	81	85	382	417	9.2
TN	67	64	284	272	-4.2
TX	333	347	1,891	1,900	0.5
UT	85	85	435	440	1.1
VT	142	140	672	637	-5.2
VA	103	100	467	456	-2.4
WA	237	233	1,407	1,393	-1.0
WV	13	13	51	51	
WI	1,242	1,247	5,986	6,133	2.5
WY	6.7	7.2	30.8	34.9	13.3
US ³	9,128	9,129	46,930	47,429	1.1

¹ Includes dry cows, excludes heifers not yet fresh.

² Excludes milk sucked by calves.

³ May not add due to rounding.

**Milk Cows and Production: By State and United States,
Preliminary July-September, 2006-2007**

State	Jul-Sep Milk Cows ¹		Jul-Sep Milk Production ²		Change From 2006
	2006	2007	2006	2007	
	<i>1,000 Head</i>	<i>1,000 Head</i>	<i>Million Pounds</i>	<i>Million Pounds</i>	<i>Percent</i>
AL	14	13	41	41	
AK	0.8	0.6	2.7	2.5	-7.4
AZ	173	181	875	968	10.6
AR	20	17	61	52	-14.8
CA	1,772	1,817	9,561	10,156	6.2
CO	112	119	654	699	6.9
CT	19	19	86	89	3.5
DE	7	7	29	28	-3.4
FL	130	126	473	473	
GA	76	77	312	312	
HI	4.2	2.7	14.2	7.8	-45.1
ID	495	519	2,858	3,020	5.7
IL	103	103	478	460	-3.8
IN	165	166	808	828	2.5
IA	207	215	1,005	1,056	5.1
KS	113	108	575	555	-3.5
KY	96	88	295	283	-4.1
LA	31	28	80	71	-11.3
ME	32	33	146	151	3.4
MD	63	57	258	248	-3.9
MA	15.5	14.5	68	62	-8.8
MI	321	338	1,775	1,922	8.3
MN	450	463	2,050	2,130	3.9
MS	22	21	71	68	-4.2
MO	115	109	418	386	-7.7
MT	18	17	87	84	-3.4
NE	61	58	275	260	-5.5
NV	27	27	139	146	5.0
NH	15	14	71	73	2.8
NJ	10.5	10.5	42	41	-2.4
NM	361	335	1,919	1,846	-3.8
NY	634	626	2,982	3,041	2.0
NC	50	47	217	216	-0.5
ND	31	28	116	108	-6.9
OH	274	276	1,190	1,227	3.1
OK	72	68	300	282	-6.0
OR	118	114	573	557	-2.8
PA	554	550	2,626	2,632	0.2
RI	1.1	1.1	4.8	4.5	-6.3
SC	17	18	58	70	20.7
SD	81	85	380	410	7.9
TN	65	62	233	221	-5.2
TX	337	348	1,684	1,751	4.0
UT	86	85	456	442	-3.1
VT	141	139	634	635	0.2
VA	102	100	416	422	1.4
WA	237	239	1,382	1,409	2.0
WV	13	13	49	49	
WI	1,244	1,248	5,851	6,084	4.0
WY	6.8	7.0	31.3	35.0	11.8
US ³	9,113	9,157	44,710	46,114	3.1

¹ Includes dry cows, excludes heifers not yet fresh.

² Excludes milk sucked by calves.

³ May not add due to rounding.

Reliability Statement

Survey Procedures: Primary data used to determine these estimates were obtained from a sample of producers. Individual States maintain a list of all known milk producers and information on the size of their herd. States use all known sources of producers to ensure that their lists are as complete as possible. Generally, all large producers and a sample of small producers are included in the survey. Questionnaires are mailed to producers near the end of the month to obtain data for the first day of the month. Additional reports are obtained by telephone, as needed, to supplement the mail response. Where feasible, States utilize state and federal administrative data, rather than conduct a monthly or quarterly survey, to estimate milk production. This eliminates duplication of data gathering by different government agencies. Indications of milk cow inventory are also obtained in the January and July Cattle Surveys.

Estimation Procedures: State offices prepare these estimates by using a combination of survey indications, historic trends, and any available administrative data. Individual State estimates are reviewed by the Agricultural Statistics Board for reasonableness.

Revision Policy: Milk production, rate per cow, and number of cows are subject to revision the following month for monthly States or the following quarter for the quarterly States. Normally, Federal Market Order sales are the main basis for revisions. However, data for all orders are not available in time for this revision. Estimates are again subject to revisions in February each year based on additional administrative data. In the event that additional changes are necessary, a third revision is possible in February the following year. Estimates are again reviewed after data from the five-year Census of Agriculture are available. No revisions are made after that date.

Reliability: Since all operations with dairy animals are not included in the sample, survey estimates are subject to sampling variability. Survey results are also subject to non-sampling errors such as omissions, duplications, and mistakes in reporting, recording, and processing the data. The effects of these errors cannot be measured directly. They are minimized through rigid quality controls in the data collection process and through a careful review of all reported data for consistency and reasonableness.

To assist users in evaluating the reliability of the estimates in this report, the "Root Mean Square Error" is shown for selected items on the next page. The "Root Mean Square Error" is a statistical measure based on past performance and is computed using the differences between first and final estimates. The "Root Mean Square Error" for milk cow inventory estimates over the past 10 July - September quarters is 0.3 percent. This means that chances are 2 out of 3 that the final July - September estimate will not be above or below the current estimate of 9.16 million head by more than 0.3 percent. Chances are 9 out of 10 that the difference will not exceed 0.5 percent.

Reliability of July-September Milk Estimates ¹

Item	Root Mean Square Error	90% Confidence Level		Difference Between First and Latest Estimates			Quarters	
				Average	Smallest	Largest	First Above Latest	First Below Latest
				<i>Million Pounds</i>	<i>Million Pounds</i>	<i>Million Pounds</i>	<i>Number</i>	<i>Number</i>
Milk Production	<i>Percent</i> 0.5	<i>Percent</i> 0.9	<i>Million Pounds</i> 415	<i>Million Pounds</i> 157	<i>Million Pounds</i> 27	<i>Million Pounds</i> 362	<i>Number</i> 7	<i>Number</i> 3
All Milk Cows	<i>Percent</i> 0.3	<i>Percent</i> 0.5	<i>1,000 Head</i> 46	<i>1,000 Head</i> 16	<i>1,000 Head</i> 2	<i>1,000 Head</i> 61	<i>Number</i> 7	<i>Number</i> 3

¹ Based on records for the past 10 July-September quarters.

Information Contacts

Listed below are the commodity specialists in the Livestock Branch of the National Agricultural Statistics Service to contact for additional information.

Dan Kerestes, Chief, Livestock Branch (202) 720-3570

Livestock Section

Shawn Clark, Head, Livestock Section (202) 720-3570
 Bruce Boess - Hogs and Pigs (202) 720-3106
 Vacant - Dairy Products (202) 690-3236
 Jason Hardegree - Milk Production and Milk Cows (202) 720-3278
 Scott Hollis - Sheep & Lambs, Goats & Kids (202) 720-4751
 Mike Miller - Cattle, Cattle on Feed (202) 720-3040
 Benita Hodge - Livestock Slaughter (515) 284-4340
 Vacant - Dairy Products Prices (202) 690-2168

ACCESS TO REPORTS!!

For your convenience, there are several ways to obtain NASS reports, data products, and services:

INTERNET ACCESS

All NASS reports are available free of charge on the worldwide Internet. For access, connect to the Internet and go to the NASS Home Page at: www.nass.usda.gov.

E-MAIL SUBSCRIPTION

All NASS reports are available by subscription free of charge direct to your e-mail address. Starting with the NASS Home Page at www.nass.usda.gov, under the right navigation, *Receive reports by Email*, click on **National** or **State**. Follow the instructions on the screen.

PRINTED REPORTS OR DATA PRODUCTS

CALL OUR TOLL-FREE ORDER DESK: 800-999-6779 (U.S. and Canada)
Other areas, please call 703-605-6220 FAX: 703-605-6900
(Visa, MasterCard, check, or money order acceptable for payment.)

ASSISTANCE

For **assistance** with general agricultural statistics or further information about NASS or its products or services, contact the **Agricultural Statistics Hotline** at **800-727-9540**, 7:30 a.m. to 4:00 p.m. ET, or e-mail: nass@nass.usda.gov.

The U.S. Department of Agriculture (USDA) prohibits discrimination in all its programs and activities on the basis of race, color, national origin, age, disability, and where applicable, sex, marital status, familial status, parental status, religion, sexual orientation, genetic information, political beliefs, reprisal, or because all or a part of an individual's income is derived from any public assistance program. (Not all prohibited bases apply to all programs.) Persons with disabilities who require alternative means for communication of program information (Braille, large print, audiotape, etc.) should contact USDA's TARGET Center at (202) 720-2600 (voice and TDD).

To file a complaint of discrimination, write to USDA, Director, Office of Civil Rights, 1400 Independence Avenue, S.W., Washington, D.C. 20250-9410, or call (800) 795-3272 (voice) or (202) 720-6382 (TDD). USDA is an equal opportunity provider and employer.

USDA Data Users' Meeting

October 29, 2007

Crowne Plaza Chicago O'Hare

Rosemont, Illinois

(847) 671-6350

The USDA's National Agricultural Statistics Service will be organizing an open forum for data users. The purpose will be to provide updates on pending changes in the various statistical and information programs and seek comments and input from data users. Other USDA agencies to be represented will include the Agricultural Marketing Service, the Economic Research Service, the Foreign Agricultural Service, and World Agricultural Outlook Board. The Foreign Trade Division from the Census Bureau will also be included in the meeting.

For registration details or additional information for the Data Users' Meeting, see the NASS homepage at www.nass.usda.gov/forum/ or contact Marjorie Taylor (NASS) at (202) 690-8141 or at marjorie_taylor@nass.usda.gov.

This Data Users' Meeting precedes an Industry Outlook meeting that will be held at the same location on October 30, 2007. The Outlook meeting brings together analysts from various commodity sectors to discuss the outlook situation. For registration details or additional information for the Industry Outlook Meeting see the Livestock and Marketing Information Center (LMIC) homepage at www.lmic.info or contact Jim Robb at (720) 544-2941 or at robb@lmic.info.