

Milk Production

Released November 16, 2007, by the National Agricultural Statistics Service (NASS), Agricultural Statistics Board, U.S. Department of Agriculture. For information on *Milk Production* call Jason Hardegee at 202-720-3278, office hours 7:30 a.m. to 4:00 p.m. ET.

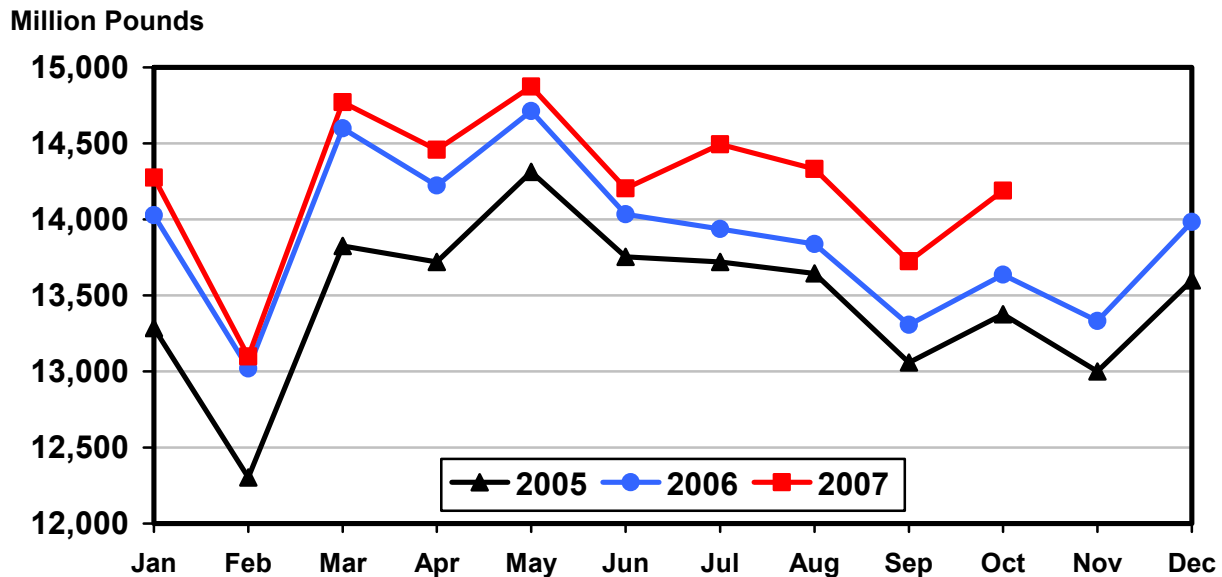
October Milk Production up 4.1 Percent

Milk production in the 23 major States during October totaled 14.2 billion pounds, up 4.1 percent from October 2006. September revised production at 13.7 billion pounds, was up 3.1 percent from September 2006. The September revision represented an increase of 10.0 million pounds or 0.1 percent from last month's preliminary production estimate.

Production per cow in the 23 major States averaged 1,699 pounds for October, 47 pounds above October 2006.

The number of milk cows on farms in the 23 major States was 8.35 million head, 98,000 head more than October 2006, and 13,000 head more than September 2007.

Monthly Milk Production 23 States



Milk Cows and Production: By Quarter, United States, 2006-2007¹

Quarter	Milk Cows ²		Milk Per Cow ³		Milk Production ³		
	2006	2007	2006	2007	2006	2007	Change From 2006
	<i>1,000 Head</i>	<i>1,000 Head</i>	<i>Pounds</i>	<i>Pounds</i>	<i>Million Pounds</i>	<i>Million Pounds</i>	<i>Percent</i>
Jan-Mar	9,092	9,130	5,010	5,039	45,547	46,006	1.0
Apr-Jun	9,128	9,129	5,141	5,195	46,930	47,429	1.1
Jul-Sep	9,113	9,157	4,906	5,037	44,710	46,124	3.2
Oct-Dec	9,115		4,894		44,611		
Annual	9,112		19,951		181,798		

¹ May not add due to rounding.

² Includes dry cows, excludes heifers not yet fresh.

³ Excludes milk sucked by calves.

Milk Cows and Production: By Month, 23 Selected States, 2006-2007¹

Month	Milk Cows ²		Milk Per Cow ³		Milk Production ³		
	2006	2007	2006	2007	2006	2007	Change from 2006
	<i>1,000 Head</i>	<i>1,000 Head</i>	<i>Pounds</i>	<i>Pounds</i>	<i>Million Pounds</i>	<i>Million Pounds</i>	<i>Percent</i>
Jan	8,198	8,280	1,711	1,724	14,027	14,276	1.8
Feb	8,206	8,277	1,586	1,582	13,018	13,098	0.6
Mar	8,224	8,285	1,775	1,783	14,599	14,771	1.2
Apr	8,240	8,280	1,726	1,746	14,222	14,457	1.7
May	8,257	8,286	1,782	1,795	14,712	14,874	1.1
Jun	8,269	8,294	1,697	1,713	14,033	14,204	1.2
Jul	8,258	8,316	1,688	1,743	13,937	14,493	4.0
Aug	8,255	8,330	1,676	1,721	13,838	14,332	3.6
Sep	8,251	8,340	1,613	1,646	13,307	13,725	3.1
Oct	8,255	8,353	1,652	1,699	13,637	14,190	4.1
Nov	8,260		1,614		13,332		
Dec	8,276		1,690		13,983		
Annual	8,246		20,210		166,645		

¹ 2007 previous month revised.

² Includes dry cows, excludes heifers not yet fresh.

³ Excludes milk sucked by calves.

Estimated Milk Cows and Production: By Month, United States, 2006-2007¹

Month	Milk Cows ²		Milk Per Cow ³		Milk Production ³		
	2006	2007	2006	2007	2006	2007	Change From 2006
	<i>1,000 Head</i>	<i>1,000 Head</i>	<i>Pounds</i>	<i>Pounds</i>	<i>Million Pounds</i>	<i>Million Pounds</i>	<i>Percent</i>
Jan	9,081	9,130	1,690	1,707	15,343	15,585	1.6
Feb	9,088	9,126	1,567	1,567	14,238	14,298	0.4
Mar	9,106	9,134	1,753	1,765	15,966	16,123	1.0
Apr	9,116	9,122	1,705	1,728	15,538	15,764	1.5
May	9,129	9,128	1,760	1,775	16,068	16,205	0.9
Jun	9,139	9,136	1,676	1,692	15,324	15,460	0.9
Jul	9,119	9,150	1,663	1,718	15,168	15,724	3.7
Aug	9,114	9,157	1,653	1,697	15,061	15,536	3.2
Sep	9,107	9,161	1,590	1,623	14,481	14,864	2.6
Oct	9,107	9,169	1,631	1,677	14,857	15,376	3.5
Nov	9,111		1,594		14,523		
Dec	9,126		1,669		15,231		
Annual	9,112		19,951		181,798		

¹ 2007 revised.

² Includes dry cows, excludes heifers not yet fresh.

³ Excludes milk sucked by calves.

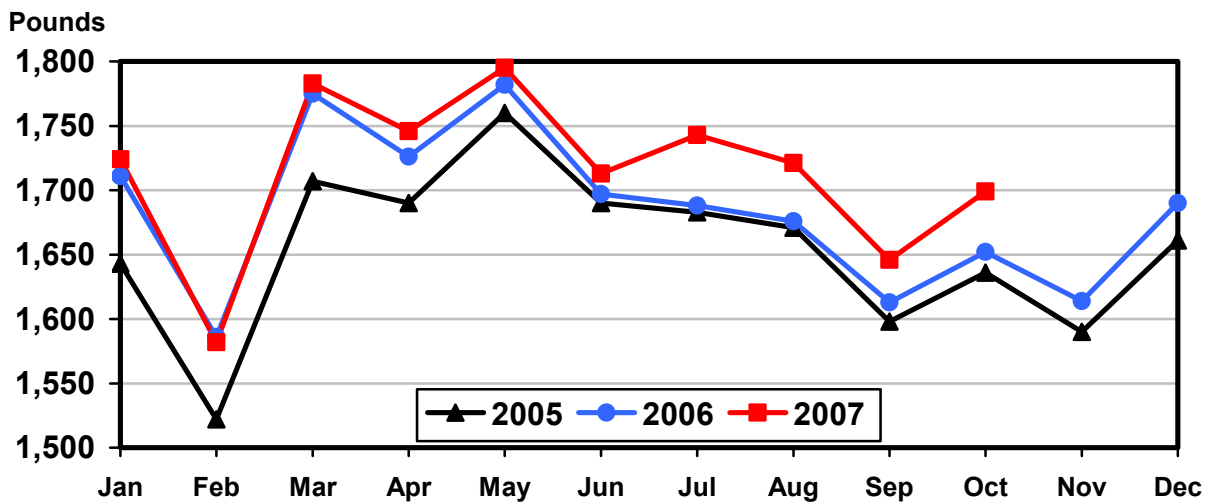
Milk Cows and Production: By State, October 2006-2007

State	Milk Cows ¹		Milk Per Cow ²		Milk Production ²		
	2006	2007	2006	2007	2006	2007	Change From 2006
	<i>1,000 Head</i>	<i>1,000 Head</i>	<i>Pounds</i>	<i>Pounds</i>	<i>Million Pounds</i>	<i>Million Pounds</i>	<i>Percent</i>
AZ	175	184	1,720	1,850	301	340	13.0
CA	1,778	1,826	1,815	1,870	3,227	3,415	5.8
CO	112	120	1,920	1,925	215	231	7.4
FL	129	126	1,185	1,200	153	151	-1.3
ID	497	522	1,870	1,890	929	987	6.2
IL	103	103	1,550	1,490	160	153	-4.4
IN	165	166	1,640	1,685	271	280	3.3
IA	208	215	1,640	1,630	341	350	2.6
KS	112	109	1,680	1,740	188	190	1.1
KY	95	87	1,050	1,090	100	95	-5.0
MI	321	341	1,840	1,865	591	636	7.6
MN	450	463	1,515	1,525	682	706	3.5
MO	115	109	1,240	1,190	143	130	-9.1
NM	360	336	1,675	1,820	603	612	1.5
NY	630	626	1,550	1,630	977	1,020	4.4
OH	274	277	1,440	1,460	395	404	2.3
OR	117	113	1,570	1,560	184	176	-4.3
PA	552	551	1,600	1,610	883	887	0.5
TX	340	348	1,650	1,700	561	592	5.5
VT	140	140	1,485	1,510	208	211	1.4
VA	102	100	1,370	1,400	140	140	
WA	236	242	1,910	1,930	451	467	3.5
WI	1,244	1,249	1,555	1,615	1,934	2,017	4.3
23-State Total	8,255	8,353	1,652	1,699	13,637	14,190	4.1

¹ Includes dry cows, excludes heifers not yet fresh.

² Excludes milk sucked by calves.

Monthly Milk per Cow 23 States



Milk Cows and Production: By State, September 2006-2007 ¹

State	Milk Cows ²		Milk per Cow ³		Milk Production ³		Change From 2006
	2006	2007	2006	2007	2006	2007	
	<i>1,000 Head</i>	<i>1,000 Head</i>	<i>Pounds</i>	<i>Pounds</i>	<i>Million Pounds</i>	<i>Million Pounds</i>	<i>Percent</i>
AZ	174	182	1,620	1,705	282	310	9.9
CA	1,773	1,821	1,775	1,785	3,147	3,250	3.3
CO	112	120	1,910	1,900	214	228	6.5
FL	129	125	1,110	1,150	143	144	0.7
ID	497	521	1,860	1,880	924	979	6.0
IL	103	103	1,485	1,440	153	148	-3.3
IN	165	166	1,595	1,635	263	271	3.0
IA	208	215	1,560	1,580	324	340	4.9
KS	113	108	1,630	1,665	184	180	-2.2
KY	96	88	1,010	1,030	97	91	-6.2
MI	320	340	1,800	1,830	576	622	8.0
MN	450	463	1,470	1,485	662	688	3.9
MO	115	109	1,180	1,140	136	124	-8.8
NM	360	336	1,650	1,800	594	605	1.9
NY	631	626	1,515	1,570	956	983	2.8
OH	274	277	1,430	1,440	392	399	1.8
OR	117	114	1,580	1,545	185	176	-4.9
PA	553	550	1,560	1,550	863	853	-1.2
TX	338	348	1,585	1,640	536	571	6.5
VT	140	140	1,460	1,465	204	205	0.5
VA	102	100	1,320	1,350	135	135	0.0
WA	237	240	1,880	1,905	446	457	2.5
WI	1,244	1,248	1,520	1,575	1,891	1,966	4.0
23-State Total	8,251	8,340	1,613	1,646	13,307	13,725	3.1

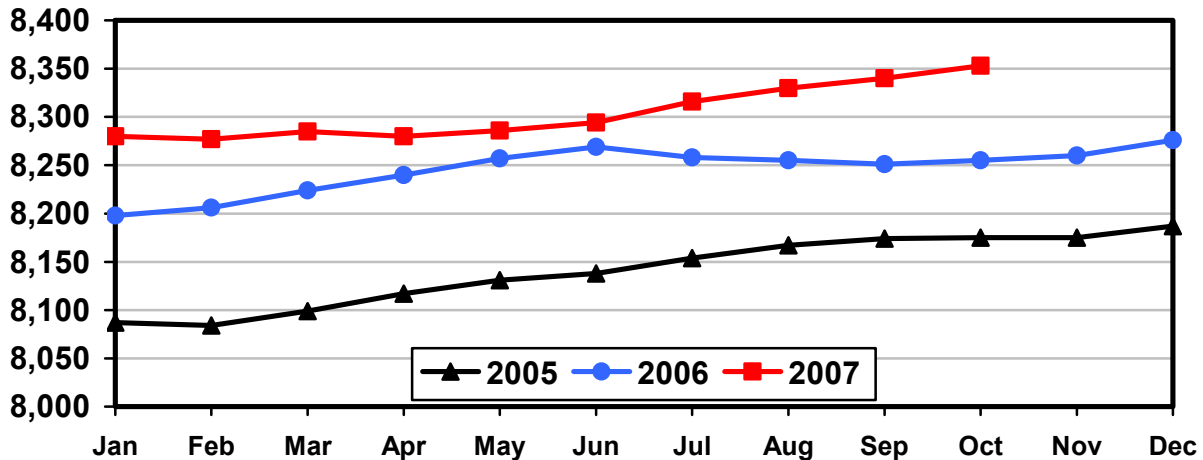
¹ 2007 revised.

² Includes dry cows, excludes heifers not yet fresh.

³ Excludes milk sucked by calves.

Monthly Milk Cows 23 States

Thousand Head



Reliability Statement

Survey Procedures: Primary data used to determine these estimates were obtained from a sample of producers. Individual States maintain a list of all known milk producers and information on the size of their herd. States use all known sources of producers to ensure that their lists are as complete as possible. Generally, all large producers and a sample of small producers are included in the survey. Questionnaires are mailed to producers near the end of the month to obtain data for the first day of the month. Additional reports are obtained by telephone, as needed, to supplement the mail response. Where feasible, States utilize state and federal administrative data, rather than conduct a monthly or quarterly survey, to estimate milk production. This eliminates duplication of data gathering by different government agencies. Indications of milk cow inventory are also obtained in the January and July Cattle Surveys.

Estimation Procedures: State offices prepare these estimates by using a combination of survey indications, historic trends, and any available administrative data. Individual State estimates are reviewed by the Agricultural Statistics Board for reasonableness.

Revision Policy: Milk production, rate per cow, and number of cows are subject to revision the following month for monthly States or the following quarter for the quarterly States. Normally, Federal Market Order sales are the main basis for revisions. However, data for all orders are not available in time for this revision. Estimates are again subject to revisions in February each year based on additional administrative data. In the event that additional changes are necessary, a third revision is possible in February the following year. Estimates are again reviewed after data from the five-year Census of Agriculture are available. No revisions are made after that date.

Reliability: Since all operations with dairy animals are not included in the sample, survey estimates are subject to sampling variability. Survey results are also subject to non-sampling errors such as omissions, duplications, and mistakes in reporting, recording, and processing the data. The effects of these errors cannot be measured directly. They are minimized through rigid quality controls in the data collection process and through a careful review of all reported data for consistency and reasonableness.

To assist users in evaluating the reliability of the estimates in this report, the "Root Mean Square Error" is shown for selected items on the next page. The "Root Mean Square Error" is a statistical measure based on past performance and is computed using the differences between first and final estimates. The "Root Mean Square Error" for milk cow inventory estimates over the past 10 July - September quarters is 0.3 percent. This means that chances are 2 out of 3 that the final July - September estimate will not be above or below the current estimate of 9.16 million head by more than 0.3 percent. Chances are 9 out of 10 that the difference will not exceed 0.5 percent.

Reliability of July-September Milk Estimates ¹

Item	Root Mean Square Error	90% Confidence Level		Difference Between First and Latest Estimates			Quarters	
				Average	Smallest	Largest	First Above Latest	First Below Latest
				Million Pounds	Million Pounds	Million Pounds	Number	Number
Milk Production	<i>Percent</i> 0.5	<i>Percent</i> 0.9	<i>Million Pounds</i> 415	<i>Million Pounds</i> 157	<i>Million Pounds</i> 27	<i>Million Pounds</i> 362	<i>Number</i> 7	<i>Number</i> 3
All Milk Cows	<i>Percent</i> 0.3	<i>Percent</i> 0.5	<i>1,000 Head</i> 46	<i>1,000 Head</i> 16	<i>1,000 Head</i> 2	<i>1,000 Head</i> 61	<i>Number</i> 7	<i>Number</i> 3

¹ Based on records for the past 10 July-September quarters.

Information Contacts

Listed below are the commodity specialists in the Livestock Branch of the National Agricultural Statistics Service to contact for additional information.

Dan Kerestes, Chief, Livestock Branch (202) 720-3570

Livestock Section

Shawn Clark, Head, Livestock Section (202) 720-3570
 Bruce Boess - Hogs and Pigs (202) 720-3106
 Vacant - Dairy Products (202) 690-3236
 Jason Hardegree - Milk Production and Milk Cows (202) 720-3278
 Scott Hollis - Sheep & Lambs, Goats & Kids (202) 720-4751
 Mike Miller - Cattle, Cattle on Feed (202) 720-3040
 Benita Hodge - Livestock Slaughter (515) 284-4340
 Vacant - Dairy Products Prices (202) 690-2168

ACCESS TO REPORTS!!

For your convenience, there are several ways to obtain NASS reports, data products, and services:

INTERNET ACCESS

All NASS reports are available free of charge on the worldwide Internet. For access, connect to the Internet and go to the NASS Home Page at: www.nass.usda.gov.

E-MAIL SUBSCRIPTION

All NASS reports are available by subscription free of charge direct to your e-mail address. Starting with the NASS Home Page at www.nass.usda.gov, under the right navigation, *Receive reports by Email*, click on **National** or **State**. Follow the instructions on the screen.

PRINTED REPORTS OR DATA PRODUCTS

CALL OUR TOLL-FREE ORDER DESK: 800-999-6779 (U.S. and Canada)
Other areas, please call 703-605-6220 FAX: 703-605-6900
(Visa, MasterCard, check, or money order acceptable for payment.)

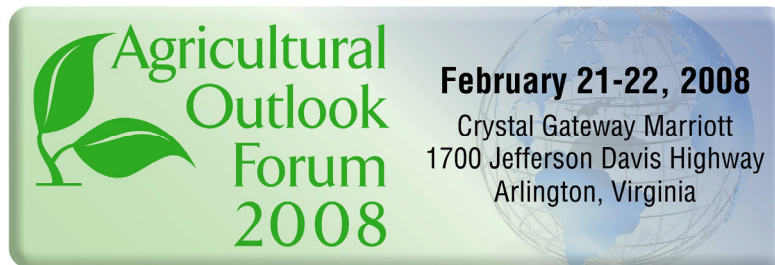
ASSISTANCE

For **assistance** with general agricultural statistics or further information about NASS or its products or services, contact the **Agricultural Statistics Hotline** at **800-727-9540**, 7:30 a.m. to 4:00 p.m. ET, or e-mail: nass@nass.usda.gov.

The U.S. Department of Agriculture (USDA) prohibits discrimination in all its programs and activities on the basis of race, color, national origin, age, disability, and where applicable, sex, marital status, familial status, parental status, religion, sexual orientation, genetic information, political beliefs, reprisal, or because all or a part of an individual's income is derived from any public assistance program. (Not all prohibited bases apply to all programs.) Persons with disabilities who require alternative means for communication of program information (Braille, large print, audiotape, etc.) should contact USDA's TARGET Center at (202) 720-2600 (voice and TDD).

To file a complaint of discrimination, write to USDA, Director, Office of Civil Rights, 1400 Independence Avenue, S.W., Washington, D.C. 20250-9410, or call (800) 795-3272 (voice) or (202) 720-6382 (TDD). USDA is an equal opportunity provider and employer.

Energizing Rural America in the Global Marketplace



Please join us for USDA's 84th annual Forum as the Secretary of Agriculture and government, farm, and industry leaders discuss the future of American agriculture.

- ❖ More than 100 experts are scheduled to speak.
- ❖ Topical sessions include luncheon and dinner speakers.
- ❖ Extensive networking opportunities.

Forecasts • Trends • Policies

Register at: www.usda.gov/oce/forum for \$300