

Milk Production

Released December 18, 2007, by the National Agricultural Statistics Service (NASS), Agricultural Statistics Board, U.S. Department of Agriculture. For information on *Milk Production* call Jason Hardegee at 202-720-3278, office hours 7:30 a.m. to 4:00 p.m. ET.

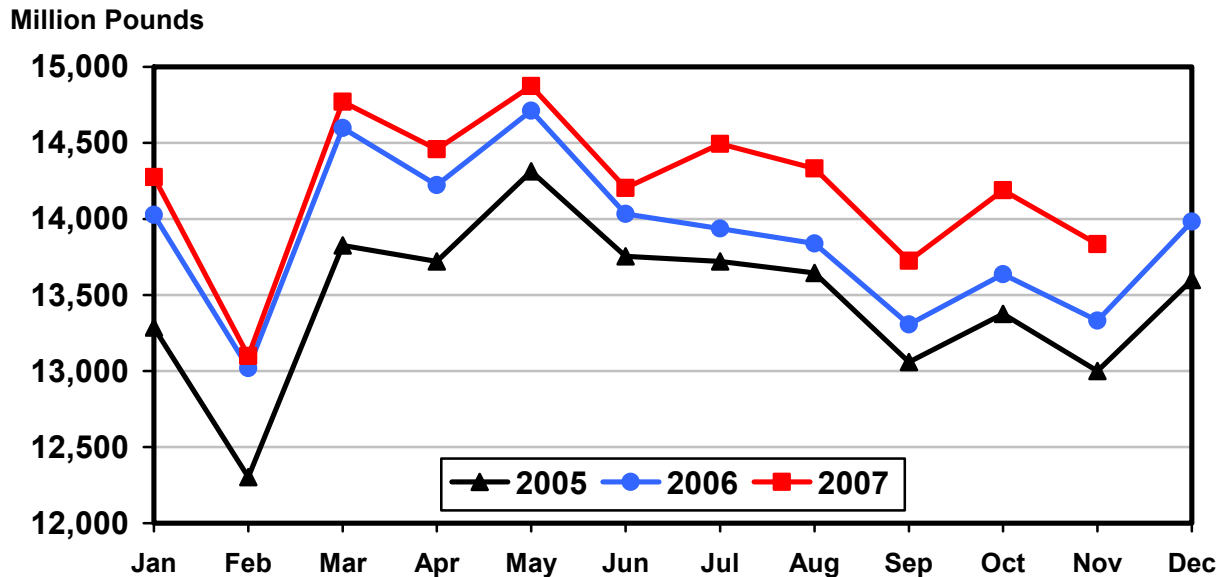
November Milk Production up 3.8 Percent

Milk production in the 23 major States during November totaled 13.8 billion pounds, up 3.8 percent from November 2006. October production, unrevised at 14.2 billion pounds, was up 4.1 percent from October 2006.

Production per cow in the 23 major States averaged 1,654 pounds for November, 40 pounds above November 2006.

The number of milk cows on farms in the 23 major States was 8.36 million head, 101,000 head more than November 2006, and 8,000 head more than October 2007.

Monthly Milk Production 23 States



Milk Cows and Production: By Quarter, United States, 2006-2007¹

Quarter	Milk Cows ²		Milk Per Cow ³		Milk Production ³		
	2006	2007	2006	2007	2006	2007	Change From 2006
	<i>1,000 Head</i>	<i>1,000 Head</i>	<i>Pounds</i>	<i>Pounds</i>	<i>Million Pounds</i>	<i>Million Pounds</i>	<i>Percent</i>
Jan-Mar	9,092	9,130	5,010	5,039	45,547	46,006	1.0
Apr-Jun	9,128	9,129	5,141	5,195	46,930	47,429	1.1
Jul-Sep	9,113	9,157	4,906	5,037	44,710	46,124	3.2
Oct-Dec	9,115		4,894		44,611		
Annual	9,112		19,951		181,798		

¹ May not add due to rounding.

² Includes dry cows, excludes heifers not yet fresh.

³ Excludes milk sucked by calves.

Milk Cows and Production: By Month, 23 Selected States, 2006-2007¹

Month	Milk Cows ²		Milk Per Cow ³		Milk Production ³		
	2006	2007	2006	2007	2006	2007	Change from 2006
	<i>1,000 Head</i>	<i>1,000 Head</i>	<i>Pounds</i>	<i>Pounds</i>	<i>Million Pounds</i>	<i>Million Pounds</i>	<i>Percent</i>
Jan	8,198	8,280	1,711	1,724	14,027	14,276	1.8
Feb	8,206	8,277	1,586	1,582	13,018	13,098	0.6
Mar	8,224	8,285	1,775	1,783	14,599	14,771	1.2
Apr	8,240	8,280	1,726	1,746	14,222	14,457	1.7
May	8,257	8,286	1,782	1,795	14,712	14,874	1.1
Jun	8,269	8,294	1,697	1,713	14,033	14,204	1.2
Jul	8,258	8,316	1,688	1,743	13,937	14,493	4.0
Aug	8,255	8,330	1,676	1,721	13,838	14,332	3.6
Sep	8,251	8,340	1,613	1,646	13,307	13,725	3.1
Oct	8,255	8,353	1,652	1,699	13,637	14,190	4.1
Nov	8,260	8,361	1,614	1,654	13,332	13,833	3.8
Dec	8,276		1,690		13,983		
Annual	8,246		20,210		166,645		

¹ 2007 previous month revised.

² Includes dry cows, excludes heifers not yet fresh.

³ Excludes milk sucked by calves.

Estimated Milk Cows and Production: By Month, United States, 2006-2007¹

Month	Milk Cows ²		Milk Per Cow ³		Milk Production ³		
	2006	2007	2006	2007	2006	2007	Change From 2006
	<i>1,000 Head</i>	<i>1,000 Head</i>	<i>Pounds</i>	<i>Pounds</i>	<i>Million Pounds</i>	<i>Million Pounds</i>	<i>Percent</i>
Jan	9,081	9,130	1,690	1,707	15,343	15,585	1.6
Feb	9,088	9,126	1,567	1,567	14,238	14,298	0.4
Mar	9,106	9,134	1,753	1,765	15,966	16,123	1.0
Apr	9,116	9,122	1,705	1,728	15,538	15,764	1.5
May	9,129	9,128	1,760	1,775	16,068	16,205	0.9
Jun	9,139	9,136	1,676	1,692	15,324	15,460	0.9
Jul	9,119	9,150	1,663	1,718	15,168	15,724	3.7
Aug	9,114	9,157	1,653	1,697	15,061	15,536	3.2
Sep	9,107	9,161	1,590	1,623	14,481	14,864	2.6
Oct	9,107	9,169	1,631	1,677	14,857	15,376	3.5
Nov	9,111	9,175	1,594	1,634	14,523	14,989	3.2
Dec	9,126		1,669		15,231		
Annual	9,112		19,951		181,798		

¹ 2007 revised.

² Includes dry cows, excludes heifers not yet fresh.

³ Excludes milk sucked by calves.

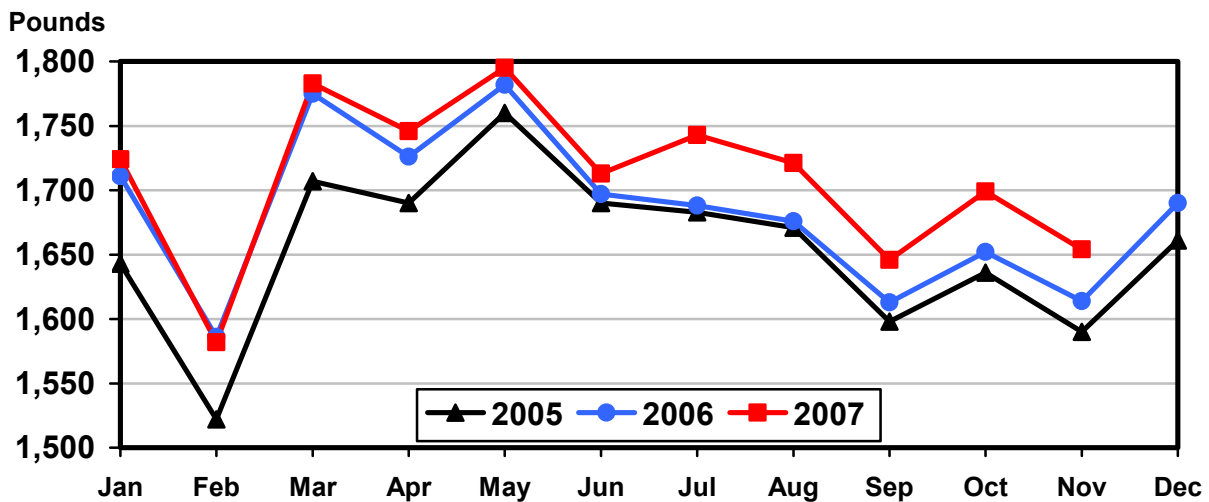
Milk Cows and Production: By State, November 2006-2007

State	Milk Cows ¹		Milk Per Cow ²		Milk Production ²		
	2006	2007	2006	2007	2006	2007	Change From 2006
	<i>1,000 Head</i>	<i>1,000 Head</i>	<i>Pounds</i>	<i>Pounds</i>	<i>Million Pounds</i>	<i>Million Pounds</i>	<i>Percent</i>
AZ	175	185	1,750	1,830	306	339	10.8
CA	1,782	1,829	1,760	1,810	3,136	3,310	5.5
CO	113	120	1,870	1,885	211	226	7.1
FL	130	125	1,245	1,190	162	149	-8.0
ID	497	522	1,790	1,800	890	940	5.6
IL	103	103	1,510	1,470	156	151	-3.2
IN	166	166	1,610	1,650	267	274	2.6
IA	209	215	1,620	1,590	339	342	0.9
KS	112	109	1,660	1,695	186	185	-0.5
KY	95	87	1,060	1,120	101	97	-4.0
MI	323	342	1,810	1,820	585	622	6.3
MN	450	463	1,495	1,490	673	690	2.5
MO	115	109	1,250	1,190	144	130	-9.7
NM	360	337	1,650	1,780	594	600	1.0
NY	626	626	1,515	1,575	948	986	4.0
OH	274	277	1,440	1,470	395	407	3.0
OR	117	115	1,480	1,500	173	173	
PA	550	550	1,560	1,580	858	869	1.3
TX	342	349	1,675	1,770	573	618	7.9
VT	140	140	1,445	1,465	202	205	1.5
VA	101	100	1,365	1,400	138	140	1.4
WA	235	243	1,815	1,850	427	450	5.4
WI	1,245	1,249	1,500	1,545	1,868	1,930	3.3
23-State Total	8,260	8,361	1,614	1,654	13,332	13,833	3.8

¹ Includes dry cows, excludes heifers not yet fresh.

² Excludes milk sucked by calves.

Monthly Milk per Cow 23 States



Milk Cows and Production: By State, October 2006-2007 ¹

State	Milk Cows ²		Milk per Cow ³		Milk Production ³		
	2006	2007	2006	2007	2006	2007	Change From 2006
	<i>1,000 Head</i>	<i>1,000 Head</i>	<i>Pounds</i>	<i>Pounds</i>	<i>Million Pounds</i>	<i>Million Pounds</i>	<i>Percent</i>
AZ	175	184	1,720	1,850	301	340	13.0
CA	1,778	1,826	1,815	1,870	3,227	3,415	5.8
CO	112	120	1,920	1,925	215	231	7.4
FL	129	125	1,185	1,120	153	140	-8.5
ID	497	522	1,870	1,880	929	981	5.6
IL	103	103	1,550	1,490	160	153	-4.4
IN	165	166	1,640	1,685	271	280	3.3
IA	208	215	1,640	1,630	341	350	2.6
KS	112	109	1,680	1,740	188	190	1.1
KY	95	87	1,050	1,115	100	97	-3.0
MI	321	341	1,840	1,865	591	636	7.6
MN	450	463	1,515	1,530	682	708	3.8
MO	115	109	1,240	1,190	143	130	-9.1
NM	360	337	1,675	1,845	603	622	3.2
NY	630	626	1,550	1,630	977	1,020	4.4
OH	274	277	1,440	1,490	395	413	4.6
OR	117	113	1,570	1,560	184	176	-4.3
PA	552	551	1,600	1,610	883	887	0.5
TX	340	348	1,650	1,735	561	604	7.7
VT	140	140	1,485	1,510	208	211	1.4
VA	102	100	1,370	1,410	140	141	0.7
WA	236	242	1,910	1,930	451	467	3.5
WI	1,244	1,249	1,555	1,600	1,934	1,998	3.3
23-State Total	8,255	8,353	1,652	1,699	13,637	14,190	4.1

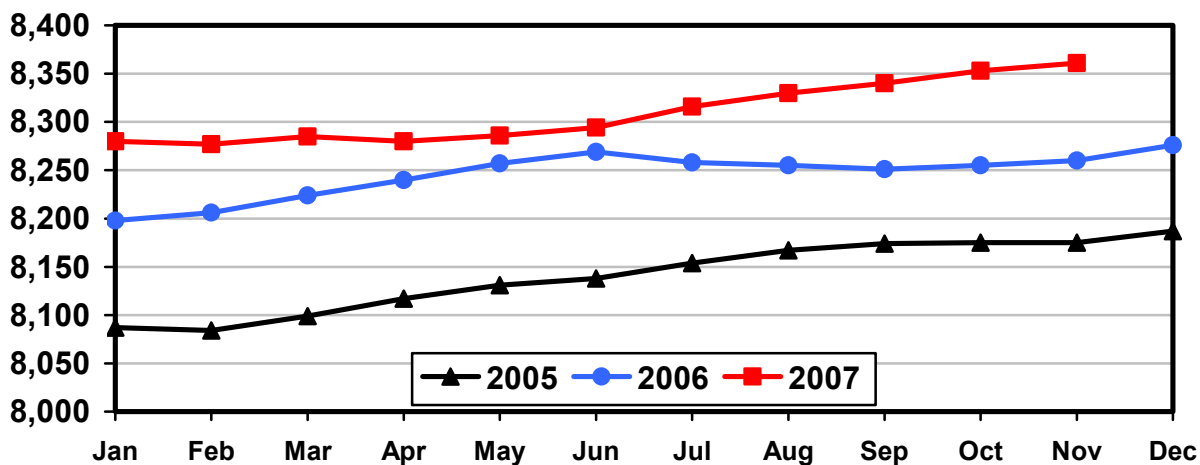
¹ 2007 revised.

² Includes dry cows, excludes heifers not yet fresh.

³ Excludes milk sucked by calves.

Monthly Milk Cows 23 States

Thousand Head



Reliability Statement

Survey Procedures: Primary data used to determine these estimates were obtained from a sample of producers. Individual States maintain a list of all known milk producers and information on the size of their herd. States use all known sources of producers to ensure that their lists are as complete as possible. Generally, all large producers and a sample of small producers are included in the survey. Questionnaires are mailed to producers near the end of the month to obtain data for the first day of the month. Additional reports are obtained by telephone, as needed, to supplement the mail response. Where feasible, States utilize state and federal administrative data, rather than conduct a monthly or quarterly survey, to estimate milk production. This eliminates duplication of data gathering by different government agencies. Indications of milk cow inventory are also obtained in the January and July Cattle Surveys.

Estimation Procedures: State offices prepare these estimates by using a combination of survey indications, historic trends, and any available administrative data. Individual State estimates are reviewed by the Agricultural Statistics Board for reasonableness.

Revision Policy: Milk production, rate per cow, and number of cows are subject to revision the following month for monthly States or the following quarter for the quarterly States. Normally, Federal Market Order sales are the main basis for revisions. However, data for all orders are not available in time for this revision. Estimates are again subject to revisions in February each year based on additional administrative data. In the event that additional changes are necessary, a third revision is possible in February the following year. Estimates are again reviewed after data from the five-year Census of Agriculture are available. No revisions are made after that date.

Reliability: Since all operations with dairy animals are not included in the sample, survey estimates are subject to sampling variability. Survey results are also subject to non-sampling errors such as omissions, duplications, and mistakes in reporting, recording, and processing the data. The effects of these errors cannot be measured directly. They are minimized through rigid quality controls in the data collection process and through a careful review of all reported data for consistency and reasonableness.

To assist users in evaluating the reliability of the estimates in this report, the "Root Mean Square Error" is shown for selected items on the next page. The "Root Mean Square Error" is a statistical measure based on past performance and is computed using the differences between first and final estimates. The "Root Mean Square Error" for milk cow inventory estimates over the past 10 July - September quarters is 0.3 percent. This means that chances are 2 out of 3 that the final July - September estimate will not be above or below the current estimate of 9.16 million head by more than 0.3 percent. Chances are 9 out of 10 that the difference will not exceed 0.5 percent.

Reliability of July-September Milk Estimates ¹

Item	Root Mean Square Error	90% Confidence Level		Difference Between First and Latest Estimates			Quarters	
				Average	Smallest	Largest	First Above Latest	First Below Latest
				Million Pounds	Million Pounds	Million Pounds	Number	Number
Milk Production	<i>Percent</i> 0.5	<i>Percent</i> 0.9	<i>Million Pounds</i> 415	<i>Million Pounds</i> 157	<i>Million Pounds</i> 27	<i>Million Pounds</i> 362	<i>Number</i> 7	<i>Number</i> 3
All Milk Cows	<i>Percent</i> 0.3	<i>Percent</i> 0.5	<i>1,000 Head</i> 46	<i>1,000 Head</i> 16	<i>1,000 Head</i> 2	<i>1,000 Head</i> 61	<i>Number</i> 7	<i>Number</i> 3

¹ Based on records for the past 10 July-September quarters.

Information Contacts

Listed below are the commodity specialists in the Livestock Branch of the National Agricultural Statistics Service to contact for additional information.

Dan Kerestes, Chief, Livestock Branch (202) 720-3570

Livestock Section

Shawn Clark, Head, Livestock Section (202) 720-3570
 Bruce Boess - Hogs and Pigs (202) 720-3106
 Vacant - Dairy Products (202) 690-3236
 Jason Hardegree - Milk Production and Milk Cows (202) 720-3278
 Scott Hollis - Sheep & Lambs, Goats & Kids (202) 720-4751
 Mike Miller - Cattle, Cattle on Feed (202) 720-3040
 Benita Hodge - Livestock Slaughter (515) 284-4340
 Joe Gaynor - Dairy Products Prices (202) 690-2168

ACCESS TO REPORTS!!

For your convenience, there are several ways to obtain NASS reports, data products, and services:

INTERNET ACCESS

All NASS reports are available free of charge on the worldwide Internet. For access, connect to the Internet and go to the NASS Home Page at: www.nass.usda.gov.

E-MAIL SUBSCRIPTION

All NASS reports are available by subscription free of charge direct to your e-mail address. Starting with the NASS Home Page at www.nass.usda.gov, under the right navigation, *Receive reports by Email*, click on **National** or **State**. Follow the instructions on the screen.

PRINTED REPORTS OR DATA PRODUCTS

CALL OUR TOLL-FREE ORDER DESK: 800-999-6779 (U.S. and Canada)
Other areas, please call 703-605-6220 FAX: 703-605-6900
(Visa, MasterCard, check, or money order acceptable for payment.)

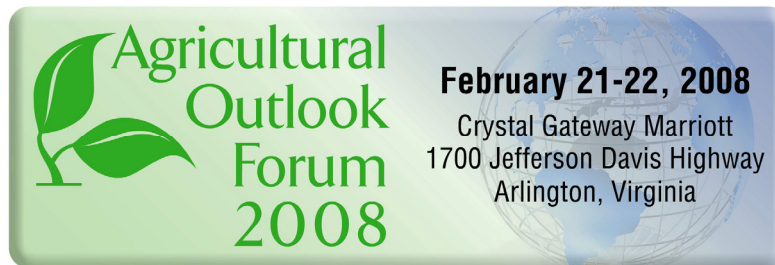
ASSISTANCE

For **assistance** with general agricultural statistics or further information about NASS or its products or services, contact the **Agricultural Statistics Hotline** at **800-727-9540**, 7:30 a.m. to 4:00 p.m. ET, or e-mail: nass@nass.usda.gov.

The U.S. Department of Agriculture (USDA) prohibits discrimination in all its programs and activities on the basis of race, color, national origin, age, disability, and where applicable, sex, marital status, familial status, parental status, religion, sexual orientation, genetic information, political beliefs, reprisal, or because all or a part of an individual's income is derived from any public assistance program. (Not all prohibited bases apply to all programs.) Persons with disabilities who require alternative means for communication of program information (Braille, large print, audiotape, etc.) should contact USDA's TARGET Center at (202) 720-2600 (voice and TDD).

To file a complaint of discrimination, write to USDA, Director, Office of Civil Rights, 1400 Independence Avenue, S.W., Washington, D.C. 20250-9410, or call (800) 795-3272 (voice) or (202) 720-6382 (TDD). USDA is an equal opportunity provider and employer.

Energizing Rural America in the Global Marketplace



Please join us for USDA's 84th annual Forum as the Secretary of Agriculture and government, farm, and industry leaders discuss the future of American agriculture.

- ❖ More than 100 experts are scheduled to speak.
- ❖ Topical sessions include luncheon and dinner speakers.
- ❖ Extensive networking opportunities.

Forecasts • Trends • Policies

Register at: www.usda.gov/oce/forum for \$300