

Milk Production

Released January 18, 2008, by the National Agricultural Statistics Service (NASS), Agricultural Statistics Board, U.S. Department of Agriculture. For information on *Milk Production* call Jason Hardegee at 202-720-3278, office hours 7:30 a.m. to 4:00 p.m. ET.

December Milk Production up 3.1 Percent

Milk production in the 23 major States during December totaled 14.4 billion pounds, up 3.1 percent from December 2006. November revised production, at 13.8 billion pounds, was up 3.9 percent from November 2006. The November revision represented an increase of 13 million pounds or 0.1 percent from last month's preliminary production estimate.

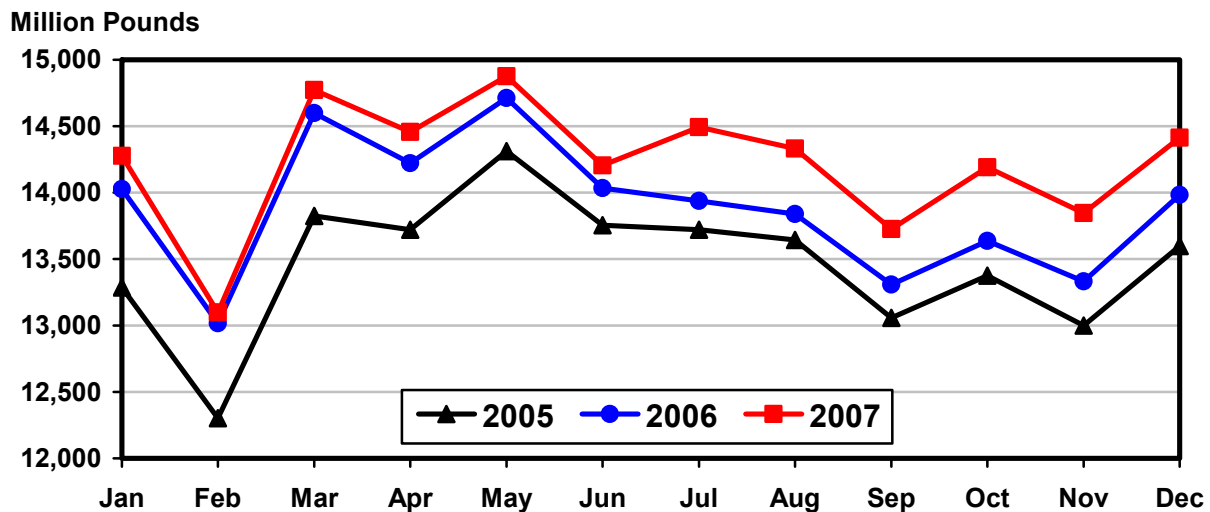
Production per cow in the 23 major States averaged 1,719 pounds for December, 29 pounds above December 2006.

The number of milk cows on farms in the 23 major States was 8.38 million head, 107,000 head more than December 2006, and 14,000 head more than November 2007.

October - December Milk Production up 3.2 Percent

Milk production in the U.S. during the October - December quarter totaled 46.0 billion pounds, up 3.2 percent from the October - December quarter last year. The average number of milk cows in the U.S. during the quarter was 9.20 million head, 80,000 head more than the same period last year.

Monthly Milk Production 23 States



Milk Cows and Production: By Quarter, United States, 2006-2007¹

Quarter	Milk Cows ²		Milk Per Cow ³		Milk Production ³		
	2006	2007	2006	2007	2006	2007	Change From 2006
	<i>1,000 Head</i>	<i>1,000 Head</i>	<i>Pounds</i>	<i>Pounds</i>	<i>Million Pounds</i>	<i>Million Pounds</i>	<i>Percent</i>
Jan-Mar	9,092	9,130	5,010	5,039	45,547	46,006	1.0
Apr-Jun	9,128	9,129	5,141	5,195	46,930	47,429	1.1
Jul-Sep	9,113	9,156	4,906	5,037	44,710	46,119	3.2
Oct-Dec	9,115	9,195	4,894	5,008	44,611	46,045	3.2
Annual	9,112	9,153	19,951	20,277	181,798	185,599	2.1

¹ May not add due to rounding.

² Includes dry cows, excludes heifers not yet fresh.

³ Excludes milk sucked by calves.

Milk Cows and Production: By Month, 23 Selected States, 2006-2007¹

Month	Milk Cows ²		Milk Per Cow ³		Milk Production ³		
	2006	2007	2006	2007	2006	2007	Change from 2006
	<i>1,000 Head</i>	<i>1,000 Head</i>	<i>Pounds</i>	<i>Pounds</i>	<i>Million Pounds</i>	<i>Million Pounds</i>	<i>Percent</i>
Jan	8,198	8,280	1,711	1,724	14,027	14,276	1.8
Feb	8,206	8,277	1,586	1,582	13,018	13,098	0.6
Mar	8,224	8,285	1,775	1,783	14,599	14,771	1.2
Apr	8,240	8,280	1,726	1,746	14,222	14,457	1.7
May	8,257	8,286	1,782	1,795	14,712	14,874	1.1
Jun	8,269	8,294	1,697	1,713	14,033	14,204	1.2
Jul	8,258	8,316	1,688	1,743	13,937	14,493	4.0
Aug	8,255	8,330	1,676	1,721	13,838	14,332	3.6
Sep	8,251	8,340	1,613	1,646	13,307	13,725	3.1
Oct	8,255	8,353	1,652	1,699	13,637	14,190	4.1
Nov	8,260	8,369	1,614	1,654	13,332	13,846	3.9
Dec	8,276	8,383	1,690	1,719	13,983	14,414	3.1
Annual	8,246	8,316	20,210	20,524	166,645	170,680	2.4

¹ 2007 previous month revised.

² Includes dry cows, excludes heifers not yet fresh.

³ Excludes milk sucked by calves.

Estimated Milk Cows and Production: By Month, United States, 2006-2007¹

Month	Milk Cows ²		Milk Per Cow ³		Milk Production ³		
	2006	2007	2006	2007	2006	2007	Change From 2006
	<i>1,000 Head</i>	<i>1,000 Head</i>	<i>Pounds</i>	<i>Pounds</i>	<i>Million Pounds</i>	<i>Million Pounds</i>	<i>Percent</i>
Jan	9,081	9,130	1,690	1,707	15,343	15,585	1.6
Feb	9,088	9,126	1,567	1,567	14,238	14,298	0.4
Mar	9,106	9,134	1,753	1,765	15,966	16,123	1.0
Apr	9,116	9,122	1,705	1,728	15,538	15,764	1.5
May	9,129	9,128	1,760	1,775	16,068	16,205	0.9
Jun	9,139	9,136	1,676	1,692	15,324	15,460	0.9
Jul	9,119	9,150	1,663	1,717	15,168	15,713	3.6
Aug	9,114	9,157	1,653	1,697	15,061	15,535	3.1
Sep	9,107	9,161	1,590	1,623	14,481	14,871	2.7
Oct	9,107	9,177	1,631	1,677	14,857	15,391	3.6
Nov	9,111	9,196	1,594	1,633	14,523	15,018	3.4
Dec	9,126	9,211	1,669	1,698	15,231	15,636	2.7
Annual	9,112	9,153	19,951	20,277	181,798	185,599	2.1

¹ 2007 revised.

² Includes dry cows, excludes heifers not yet fresh.

³ Excludes milk sucked by calves.

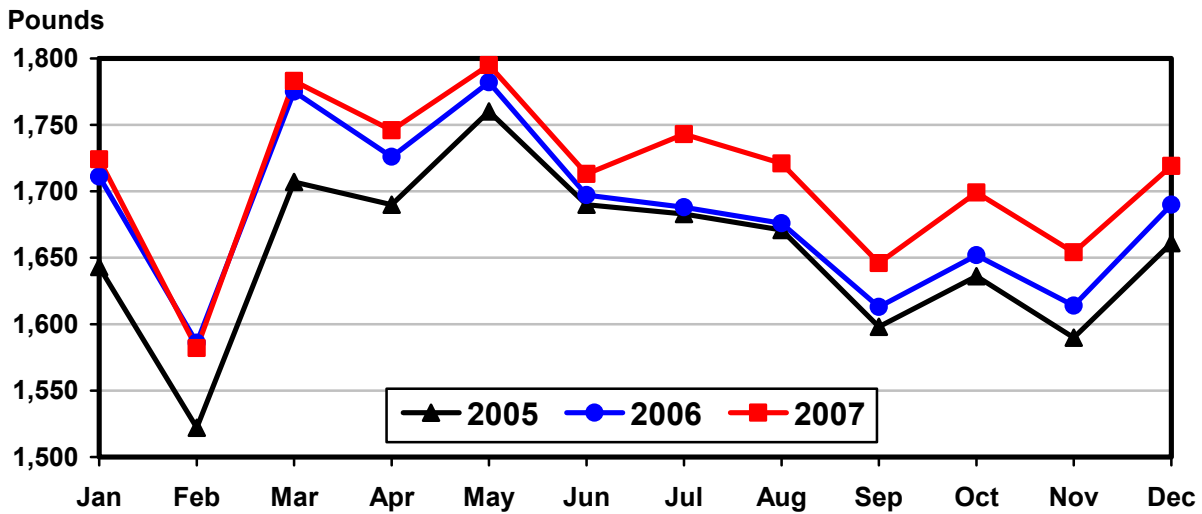
Milk Cows and Production: By State, December 2006-2007

State	Milk Cows ¹		Milk Per Cow ²		Milk Production ²		
	2006	2007	2006	2007	2006	2007	Change From 2006
	<i>1,000 Head</i>	<i>1,000 Head</i>	<i>Pounds</i>	<i>Pounds</i>	<i>Million Pounds</i>	<i>Million Pounds</i>	<i>Percent</i>
AZ	175	185	1,915	1,925	335	356	6.3
CA	1,787	1,833	1,845	1,880	3,297	3,446	4.5
CO	114	120	1,910	1,965	218	236	8.3
FL	130	124	1,360	1,390	177	172	-2.8
ID	500	527	1,820	1,870	910	985	8.2
IL	103	103	1,620	1,580	167	163	-2.4
IN	166	166	1,690	1,705	281	283	0.7
IA	209	215	1,700	1,665	355	358	0.8
KS	111	109	1,750	1,790	194	195	0.5
KY	94	89	1,120	1,170	105	104	-1.0
MI	324	343	1,880	1,870	609	641	5.3
MN	455	463	1,575	1,590	717	736	2.6
MO	115	110	1,300	1,210	150	133	-11.3
NM	360	339	1,690	1,840	608	624	2.6
NY	628	627	1,580	1,615	992	1,013	2.1
OH	274	278	1,485	1,500	407	417	2.5
OR	116	115	1,520	1,515	176	174	-1.1
PA	549	550	1,620	1,620	889	891	0.2
TX	346	355	1,765	1,825	611	648	6.1
VT	140	140	1,520	1,545	213	216	1.4
VA	100	99	1,480	1,495	148	148	
WA	235	243	1,890	1,930	444	469	5.6
WI	1,245	1,250	1,590	1,605	1,980	2,006	1.3
23-State Total	8,276	8,383	1,690	1,719	13,983	14,414	3.1

¹ Includes dry cows, excludes heifers not yet fresh.

² Excludes milk sucked by calves.

Monthly Milk per Cow 23 States



Milk Cows and Production: By State, November 2006-2007 ¹

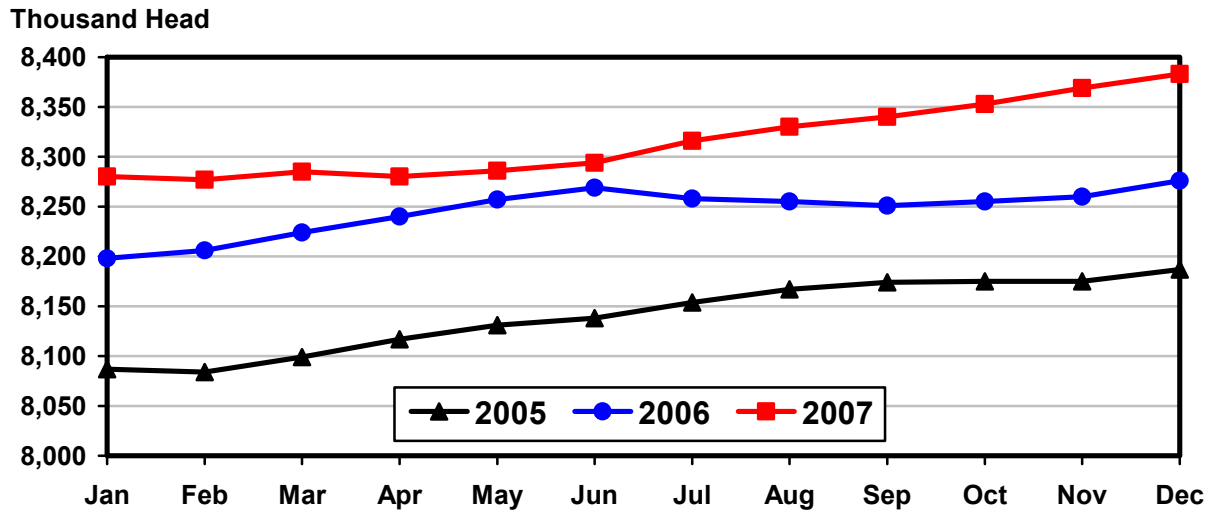
State	Milk Cows ²		Milk per Cow ³		Milk Production ³		Change From 2006
	2006	2007	2006	2007	2006	2007	
	<i>1,000 Head</i>	<i>1,000 Head</i>	<i>Pounds</i>	<i>Pounds</i>	<i>Million Pounds</i>	<i>Million Pounds</i>	<i>Percent</i>
AZ	175	185	1,750	1,830	306	339	10.8
CA	1,782	1,830	1,760	1,810	3,136	3,312	5.6
CO	113	120	1,870	1,890	211	227	7.6
FL	130	125	1,245	1,200	162	150	-7.4
ID	497	525	1,790	1,810	890	950	6.7
IL	103	103	1,510	1,470	156	151	-3.2
IN	166	166	1,610	1,650	267	274	2.6
IA	209	215	1,620	1,590	339	342	0.9
KS	112	109	1,660	1,695	186	185	-0.5
KY	95	88	1,060	1,100	101	97	-4.0
MI	323	342	1,810	1,820	585	622	6.3
MN	450	463	1,495	1,500	673	695	3.3
MO	115	109	1,250	1,190	144	130	-9.7
NM	360	337	1,650	1,780	594	600	1.0
NY	626	626	1,515	1,575	948	986	4.0
OH	274	277	1,440	1,450	395	402	1.8
OR	117	115	1,480	1,490	173	171	-1.2
PA	550	550	1,560	1,580	858	869	1.3
TX	342	351	1,675	1,760	573	618	7.9
VT	140	140	1,445	1,465	202	205	1.5
VA	101	100	1,365	1,400	138	140	1.4
WA	235	244	1,815	1,850	427	451	5.6
WI	1,245	1,249	1,500	1,545	1,868	1,930	3.3
23-State Total	8,260	8,369	1,614	1,654	13,332	13,846	3.9

¹ 2007 revised.

² Includes dry cows, excludes heifers not yet fresh.

³ Excludes milk sucked by calves.

Monthly Milk Cows 23 States



**Milk Cows and Production: By State and United States,
Revised July-September, 2006-2007**

State	Jul-Sep Milk Cows ¹		Jul-Sep Milk Production ²		Change From 2006
	2006	2007	2006	2007	
	<i>1,000 Head</i>	<i>1,000 Head</i>	<i>Million Pounds</i>	<i>Million Pounds</i>	<i>Percent</i>
AL	14	13	41	41	
AK	0.8	0.6	2.7	2.5	-7.4
AZ	173	181	875	968	10.6
AR	20	17	61	49	-19.7
CA	1,772	1,817	9,561	10,154	6.2
CO	112	119	654	699	6.9
CT	19	19	86	89	3.5
DE	7.0	6.5	29	26	-10.3
FL	130	126	473	472	-0.2
GA	76	77	312	312	
HI	4.2	2.7	14.2	7.8	-45.1
ID	495	519	2,858	3,020	5.7
IL	103	103	478	460	-3.8
IN	165	166	808	828	2.5
IA	207	215	1,005	1,054	4.9
KS	113	108	575	555	-3.5
KY	96	88	295	284	-3.7
LA	31	28	80	71	-11.3
ME	32	33	146	151	3.4
MD	63	57	258	248	-3.9
MA	15.5	14.5	68	62	-8.8
MI	321	338	1,775	1,922	8.3
MN	450	463	2,050	2,137	4.2
MS	22	21	71	68	-4.2
MO	115	109	418	386	-7.7
MT	18	17	87	83	-4.6
NE	61	58	275	260	-5.5
NV	27	27	139	146	5.0
NH	15	14	71	73	2.8
NJ	10.5	10.0	42	41	-2.4
NM	361	335	1,919	1,846	-3.8
NY	634	626	2,982	3,041	2.0
NC	50	47	217	216	-0.5
ND	31	28	116	108	-6.9
OH	274	276	1,190	1,227	3.1
OK	72	68	300	282	-6.0
OR	118	114	573	553	-3.5
PA	554	550	2,626	2,632	0.2
RI	1.1	1.1	4.8	4.5	-6.3
SC	17	18	58	71	22.4
SD	81	85	380	410	7.9
TN	65	62	233	221	-5.2
TX	337	348	1,684	1,751	4.0
UT	86	85	456	442	-3.1
VT	141	139	634	635	0.2
VA	102	100	416	420	1.0
WA	237	239	1,382	1,409	2.0
WV	13	13	49	49	
WI	1,244	1,248	5,851	6,097	4.2
WY	6.8	7.0	31.3	35.0	11.8
US ³	9,113	9,156	44,710	46,119	3.2

¹ Includes dry cows, excludes heifers not yet fresh.

² Excludes milk sucked by calves.

³ May not add due to rounding.

**Milk Cows and Production: By State and United States,
Preliminary October-December, 2006-2007**

State	Oct-Dec Milk Cows ¹		Oct-Dec Milk Production ²		Change From 2006
	2006	2007	2006	2007	
	<i>1,000 Head</i>	<i>1,000 Head</i>	<i>Million Pounds</i>	<i>Million Pounds</i>	<i>Percent</i>
AL	13	13	46	46	
AK	0.7	0.6	2.2	1.8	-18.2
AZ	175	185	942	1,035	9.9
AR	19	17	62	50	-19.4
CA	1,782	1,830	9,660	10,173	5.3
CO	113	120	644	694	7.8
CT	19	19	89	88	-1.1
DE	7.0	6.5	30	27	-10.0
FL	130	125	492	462	-6.1
GA	75	77	330	318	-3.6
HI	4.0	2.5	12.7	6.3	-50.4
ID	498	525	2,729	2,916	6.9
IL	103	103	483	467	-3.3
IN	166	166	819	837	2.2
IA	209	215	1,035	1,050	1.4
KS	112	109	568	570	0.4
KY	95	88	306	298	-2.6
LA	30	27	86	76	-11.6
ME	32	33	141	147	4.3
MD	60	57	255	254	-0.4
MA	15.5	14.5	65	61	-6.2
MI	323	342	1,785	1,899	6.4
MN	452	463	2,072	2,139	3.2
MS	22	21	76	72	-5.3
MO	115	109	437	393	-10.1
MT	18	17	85	80	-5.9
NE	61	57	277	263	-5.1
NV	27	27	139	146	5.0
NH	14.5	14.0	69	72	4.3
NJ	10.5	10.0	41	41	
NM	360	338	1,805	1,846	2.3
NY	628	626	2,917	3,019	3.5
NC	49	48	220	221	0.5
ND	31	28	115	106	-7.8
OH	274	277	1,197	1,232	2.9
OK	70	67	290	271	-6.6
OR	117	114	533	521	-2.3
PA	550	550	2,630	2,647	0.6
RI	1.1	1.1	4.6	4.4	-4.3
SC	17	18	67	73	9.0
SD	81	86	379	413	9.0
TN	66	61	248	229	-7.7
TX	343	351	1,745	1,870	7.2
UT	86	85	450	445	-1.1
VT	140	140	623	632	1.4
VA	101	100	426	429	0.7
WA	235	243	1,322	1,387	4.9
WV	13	13	50	49	-2.0
WI	1,245	1,249	5,782	5,934	2.6
WY	6.9	7.0	29.7	34.7	16.8
US ³	9,115	9,195	44,611	46,045	3.2

¹ Includes dry cows, excludes heifers not yet fresh.

² Excludes milk sucked by calves.

³ May not add due to rounding.

Reliability Statement

Survey Procedures: Primary data used to determine these estimates were obtained from a sample of producers. Individual States maintain a list of all known milk producers and information on the size of their herd. States use all known sources of producers to ensure that their lists are as complete as possible. Generally, all large producers and a sample of small producers are included in the survey. Questionnaires are mailed to producers near the end of the month to obtain data for the first day of the month. Additional reports are obtained by telephone, as needed, to supplement the mail response. Where feasible, States utilize state and federal administrative data, rather than conduct a monthly or quarterly survey, to estimate milk production. This eliminates duplication of data gathering by different government agencies. Indications of milk cow inventory are also obtained in the January and July Cattle Surveys.

Estimation Procedures: State offices prepare these estimates by using a combination of survey indications, historic trends, and any available administrative data. Individual State estimates are reviewed by the Agricultural Statistics Board for reasonableness.

Revision Policy: Milk production, rate per cow, and number of cows are subject to revision the following month for monthly States or the following quarter for the quarterly States. Normally, Federal Market Order sales are the main basis for revisions. However, data for all orders are not available in time for this revision. Estimates are again subject to revisions in February each year based on additional administrative data. In the event that additional changes are necessary, a third revision is possible in February the following year. Estimates are again reviewed after data from the five-year Census of Agriculture are available. No revisions are made after that date.

Reliability: Since all operations with dairy animals are not included in the sample, survey estimates are subject to sampling variability. Survey results are also subject to non-sampling errors such as omissions, duplications, and mistakes in reporting, recording, and processing the data. The effects of these errors cannot be measured directly. They are minimized through rigid quality controls in the data collection process and through a careful review of all reported data for consistency and reasonableness.

To assist users in evaluating the reliability of the estimates in this report, the "Root Mean Square Error" is shown for selected items on the next page. The "Root Mean Square Error" is a statistical measure based on past performance and is computed using the differences between first and final estimates. The "Root Mean Square Error" for milk cow inventory estimates over the past 10 October - December quarters is 0.3 percent. This means that chances are 2 out of 3 that the final July - September estimate will not be above or below the current estimate of 9.2 million head by more than 0.3 percent. Chances are 9 out of 10 that the difference will not exceed 0.6 percent.

Reliability of October-December Milk Estimates ¹

Item	Root Mean Square Error	90% Confidence Level		Difference Between First and Latest Estimates			Quarters	
				Average	Smallest	Largest	First Above Latest	First Below Latest
				<i>Million Pounds</i>	<i>Million Pounds</i>	<i>Million Pounds</i>	<i>Number</i>	<i>Number</i>
Milk Production	<i>Percent</i> 0.4	<i>Percent</i> 0.7	<i>Million Pounds</i> 322	<i>Million Pounds</i> 135	<i>Million Pounds</i> 15	<i>Million Pounds</i> 265	<i>Number</i> 6	<i>Number</i> 4
All Milk Cows	<i>Percent</i> 0.3	<i>Percent</i> 0.6	<i>1,000 Head</i> 55	<i>1,000 Head</i> 16	<i>1,000 Head</i> 1	<i>1,000 Head</i> 73	<i>Number</i> 7	<i>Number</i> 3

¹ Based on records for the past 10 October-December quarters.

Information Contacts

Listed below are the commodity specialists in the Livestock Branch of the National Agricultural Statistics Service to contact for additional information.

Dan Kerestes, Chief, Livestock Branch (202) 720-3570

Livestock Section

Shawn Clark, Head, Livestock Section (202) 720-3570
 Bruce Boess - Hogs and Pigs (202) 720-3106
 Jim Collom - Dairy Products (202) 690-3236
 Joe Gaynor - Dairy Products Prices (202) 690-2168
 Jason Hardegee - Milk Production and Milk Cows (202) 720-3278
 Benita Hodge - Livestock Slaughter (515) 284-4340
 Scott Hollis - Sheep & Lambs, Goats & Kids (202) 720-4751
 Mike Miller - Cattle, Cattle on Feed (202) 720-3040

ACCESS TO REPORTS!!

For your convenience, there are several ways to obtain NASS reports, data products, and services:

INTERNET ACCESS

All NASS reports are available free of charge on the worldwide Internet. For access, connect to the Internet and go to the NASS Home Page at: www.nass.usda.gov.

E-MAIL SUBSCRIPTION

All NASS reports are available by subscription free of charge direct to your e-mail address. Starting with the NASS Home Page at www.nass.usda.gov, under the right navigation, *Receive reports by Email*, click on **National** or **State**. Follow the instructions on the screen.

PRINTED REPORTS OR DATA PRODUCTS

CALL OUR TOLL-FREE ORDER DESK: 800-999-6779 (U.S. and Canada)
Other areas, please call 703-605-6220 FAX: 703-605-6900
(Visa, MasterCard, check, or money order acceptable for payment.)

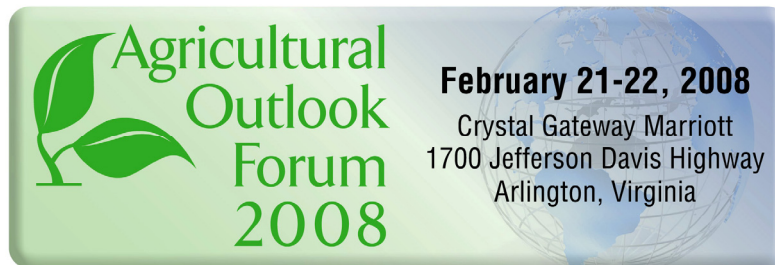
ASSISTANCE

For **assistance** with general agricultural statistics or further information about NASS or its products or services, contact the **Agricultural Statistics Hotline** at **800-727-9540**, 7:30 a.m. to 4:00 p.m. ET, or e-mail: nass@nass.usda.gov.

The U.S. Department of Agriculture (USDA) prohibits discrimination in all its programs and activities on the basis of race, color, national origin, age, disability, and where applicable, sex, marital status, familial status, parental status, religion, sexual orientation, genetic information, political beliefs, reprisal, or because all or a part of an individual's income is derived from any public assistance program. (Not all prohibited bases apply to all programs.) Persons with disabilities who require alternative means for communication of program information (Braille, large print, audiotape, etc.) should contact USDA's TARGET Center at (202) 720-2600 (voice and TDD).

To file a complaint of discrimination, write to USDA, Director, Office of Civil Rights, 1400 Independence Avenue, S.W., Washington, D.C. 20250-9410, or call (800) 795-3272 (voice) or (202) 720-6382 (TDD). USDA is an equal opportunity provider and employer.

Energizing Rural America in the Global Marketplace



Please join us for USDA's 84th annual Forum as the Secretary of Agriculture and government, farm, and industry leaders discuss the future of American agriculture.

- ❖ More than 100 experts are scheduled to speak.
- ❖ Topical sessions include luncheon and dinner speakers.
- ❖ Extensive networking opportunities.

Forecasts • Trends • Policies

Register at: www.usda.gov/oce/forum for \$300