

Milk Production

Released February 15, 2008, by the National Agricultural Statistics Service (NASS), Agricultural Statistics Board, U.S. Department of Agriculture.
For information on *Milk Production* call Jason Hardegee at 202-720-3278, office hours 7:30 a.m. to 4:00 p.m. ET.

January Milk Production up 2.4 Percent

Milk production in the 23 major States during January totaled 14.6 billion pounds, up 2.4 percent from January 2007. December production, unrevised at 14.4 billion pounds, was up 2.8 percent from December 2006.

Production per cow in the 23 major States averaged 1,743 pounds for January, 17 pounds above January 2007.

The number of milk cows on farms in the 23 major States was 8.40 million head, 120,000 head more than January 2007, and 15,000 head more than December 2007.

2007 Annual Milk Production up 2.1 Percent from 2006

The annual production of milk for the U.S. during 2007 was 186 billion pounds, 2.1 percent above 2006. Revisions to 2006 production decreased the annual total 2 million pounds. Revised 2007 production was up 3 million pounds from last month's publication.

Production per cow in the U.S. averaged 20,267 pounds for 2007, 316 pounds above 2006. The average annual rate of milk production per cow has increased 17.9 percent from 1998.

The average number of milk cows on farms in the U.S. during 2007 was 9.16 million head, up 0.5 percent from 2006. The average number of milk cows was revised up 5,000 head for 2007.

Special Note

Included in this issue are monthly, quarterly, and annual revisions, by State, U.S., and Puerto Rico for 2006-2007.

This issue also contains the Number of Milk Cow Operations and Licensed Dairy Herds, by State, U.S., and Puerto Rico for 2006-2007.

Milk Cows and Production: By Quarter, United States, 2007-2008 ¹

Quarter	Milk Cows ²		Milk Per Cow ³		Milk Production ³		
	2007	2008	2007	2008	2007	2008	Change From 2007
	<i>1,000 Head</i>	<i>1,000 Head</i>	<i>Pounds</i>	<i>Pounds</i>	<i>Million Pounds</i>	<i>Million Pounds</i>	<i>Percent</i>
Jan-Mar	9,138		5,040		46,058		
Apr-Jun	9,138		5,189		47,419		
Jul-Sep	9,159		5,034		46,110		
Oct-Dec	9,198		5,003		46,015		
Annual	9,158		20,267		185,602		

¹ May not add due to rounding.

² Includes dry cows, excludes heifers not yet fresh.

³ Excludes milk sucked by calves.

Milk Cows and Production: By Month, 23 Selected States, 2007-2008 ¹

Month	Milk Cows ²		Milk Per Cow ³		Milk Production ³		
	2007	2008	2007	2008	2007	2008	Change from 2007
	<i>1,000 Head</i>	<i>1,000 Head</i>	<i>Pounds</i>	<i>Pounds</i>	<i>Million Pounds</i>	<i>Million Pounds</i>	<i>Percent</i>
Jan	8,284	8,404	1,726	1,743	14,302	14,648	2.4
Feb	8,286		1,584		13,125		
Mar	8,295		1,783		14,787		
Apr	8,292		1,745		14,470		
May	8,298		1,791		14,860		
Jun	8,302		1,712		14,216		
Jul	8,322		1,742		14,500		
Aug	8,330		1,719		14,323		
Sep	8,341		1,645		13,718		
Oct	8,355		1,697		14,176		
Nov	8,369		1,654		13,843		
Dec	8,389		1,718		14,414		
Annual	8,322		20,516		170,734		

¹ 2007 revised.

² Includes dry cows, excludes heifers not yet fresh.

³ Excludes milk sucked by calves.

Estimated Milk Cows and Production: By Month, United States, 2007-2008 ¹

Month	Milk Cows ²		Milk Per Cow ³		Milk Production ³		
	2007	2008	2007	2008	2007	2008	Change From 2007
	<i>1,000 Head</i>	<i>1,000 Head</i>	<i>Pounds</i>	<i>Pounds</i>	<i>Million Pounds</i>	<i>Million Pounds</i>	<i>Percent</i>
Jan	9,135	9,232	1,708	1,723	15,605	15,909	1.9
Feb	9,136		1,567		14,321		
Mar	9,142		1,765		16,132		
Apr	9,132		1,726		15,763		
May	9,138		1,771		16,180		
Jun	9,144		1,692		15,476		
Jul	9,153		1,717		15,714		
Aug	9,159		1,695		15,525		
Sep	9,166		1,622		14,871		
Oct	9,181		1,674		15,370		
Nov	9,196		1,633		15,013		
Dec	9,217		1,696		15,632		
Annual	9,158		20,267		185,602		

¹ 2007 revised.

² Includes dry cows, excludes heifers not yet fresh.

³ Excludes milk sucked by calves.

Milk Cows and Production: By State, January 2007-2008 ¹

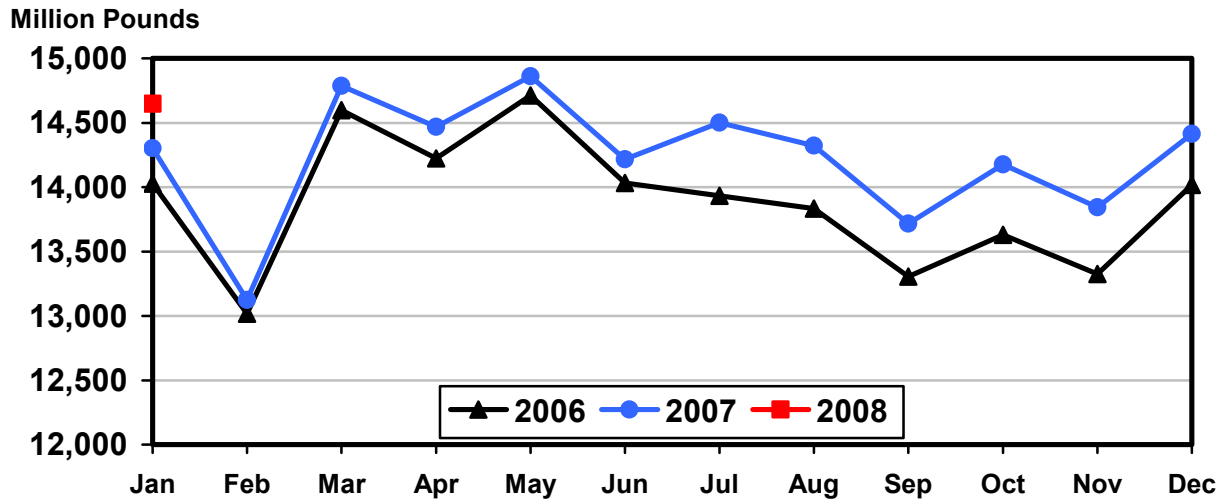
State	Milk Cows ²		Milk Per Cow ³		Milk Production ³		
	2007	2008	2007	2008	2007	2008	Change From 2007
	<i>1,000 Head</i>	<i>1,000 Head</i>	<i>Pounds</i>	<i>Pounds</i>	<i>Million Pounds</i>	<i>Million Pounds</i>	<i>Percent</i>
AZ	175	185	2,030	2,020	355	374	5.4
CA	1,792	1,837	1,880	1,900	3,369	3,490	3.6
CO	115	120	1,855	1,940	213	233	9.4
FL	130	124	1,470	1,450	191	180	-5.8
ID	502	533	1,850	1,870	929	997	7.3
IL	103	103	1,645	1,615	169	166	-1.8
IN	165	167	1,720	1,710	284	286	0.7
IA	210	216	1,730	1,680	363	363	
KS	110	109	1,670	1,695	184	185	0.5
KY	93	91	1,220	1,180	113	107	-5.3
MI	328	344	1,945	1,910	638	657	3.0
MN	455	463	1,635	1,610	744	745	0.1
MO	115	110	1,300	1,225	150	135	-10.0
NM	357	340	1,690	1,880	603	639	6.0
NY	628	626	1,610	1,650	1,011	1,033	2.2
OH	275	278	1,530	1,530	421	425	1.0
OR	115	115	1,670	1,530	192	176	-8.3
PA	549	552	1,640	1,630	900	900	
TX	347	360	1,780	1,825	618	657	6.3
VT	140	140	1,560	1,570	218	220	0.9
VA	100	98	1,540	1,570	154	154	
WA	235	243	1,930	1,960	454	476	4.8
WI	1,245	1,250	1,630	1,640	2,029	2,050	1.0
23-State Total	8,284	8,404	1,726	1,743	14,302	14,648	2.4

¹ 2007 revised

² Includes dry cows, excludes heifers not yet fresh.

³ Excludes milk sucked by calves.

**Monthly Milk Production
23 States**



Milk Cows and Production: By State, December 2006-2007¹

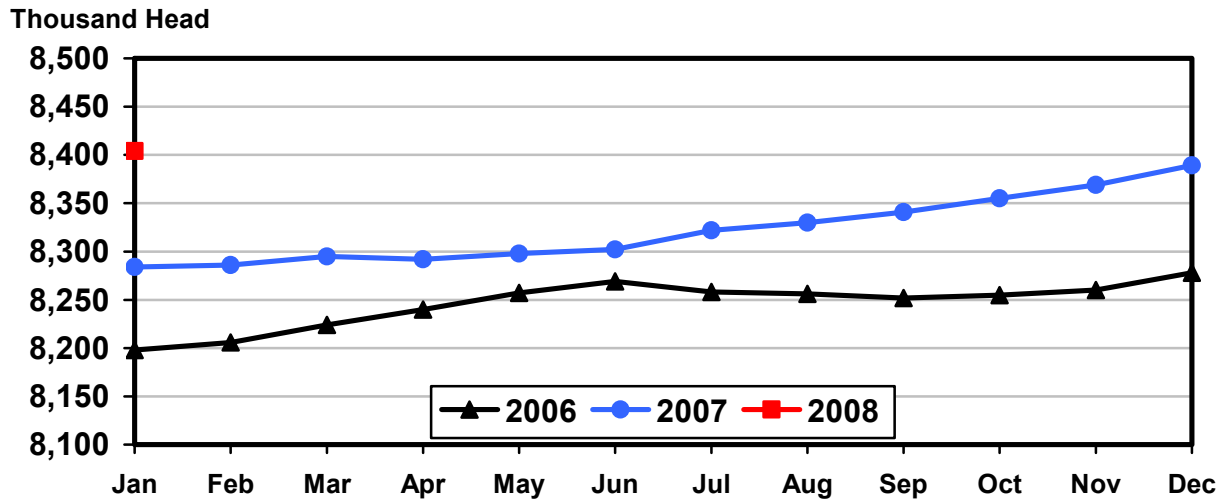
State	Milk Cows ²		Milk per Cow ³		Milk Production ³		
	2006	2007	2006	2007	2006	2007	Change From 2006
	<i>1,000 Head</i>	<i>1,000 Head</i>	<i>Pounds</i>	<i>Pounds</i>	<i>Million Pounds</i>	<i>Million Pounds</i>	<i>Percent</i>
AZ	175	185	1,915	1,925	335	356	6.3
CA	1,787	1,835	1,845	1,885	3,297	3,459	4.9
CO	114	120	1,910	1,965	218	236	8.3
FL	130	124	1,390	1,360	181	169	-6.6
ID	500	530	1,840	1,870	920	991	7.7
IL	103	103	1,620	1,580	167	163	-2.4
IN	166	166	1,670	1,705	277	283	2.2
IA	209	215	1,700	1,665	355	358	0.8
KS	111	109	1,770	1,650	196	180	-8.2
KY	94	90	1,160	1,145	109	103	-5.5
MI	326	344	1,915	1,895	624	652	4.5
MN	455	463	1,590	1,580	723	732	1.2
MO	115	110	1,300	1,210	150	133	-11.3
NM	360	339	1,680	1,835	605	622	2.8
NY	628	626	1,580	1,620	992	1,014	2.2
OH	274	278	1,485	1,500	407	417	2.5
OR	116	115	1,520	1,515	176	174	-1.1
PA	549	550	1,620	1,620	889	891	0.2
TX	346	355	1,765	1,825	611	648	6.1
VT	140	140	1,520	1,545	213	216	1.4
VA	100	99	1,480	1,495	148	148	
WA	235	243	1,890	1,930	444	469	5.6
WI	1,245	1,250	1,590	1,600	1,980	2,000	1.0
23-State Total	8,278	8,389	1,693	1,718	14,017	14,414	2.8

¹ 2006 and 2007 revised.

² Includes dry cows, excludes heifers not yet fresh.

³ Excludes milk sucked by calves.

Monthly Milk Cows 23 States



Milk Cows and Production: United States, 1998-2007 ¹

Year	Milk Cows ² <i>1,000 Head</i>	Production per Cow ³		Milk Production ³
		Milk <i>Pounds</i>	Total <i>Million Pounds</i>	
1998	9,151	17,185	157,262	
1999	9,153	17,763	162,589	
2000	9,199	18,197	167,393	
2001	9,103	18,162	165,332	
2002	9,139	18,608	170,063	
2003	9,083	18,760	170,394	
2004	9,012	18,967	170,934	
2005	9,043	19,565	176,929	
2006	9,112	19,951	181,796	
2007	9,158	20,267	185,602	

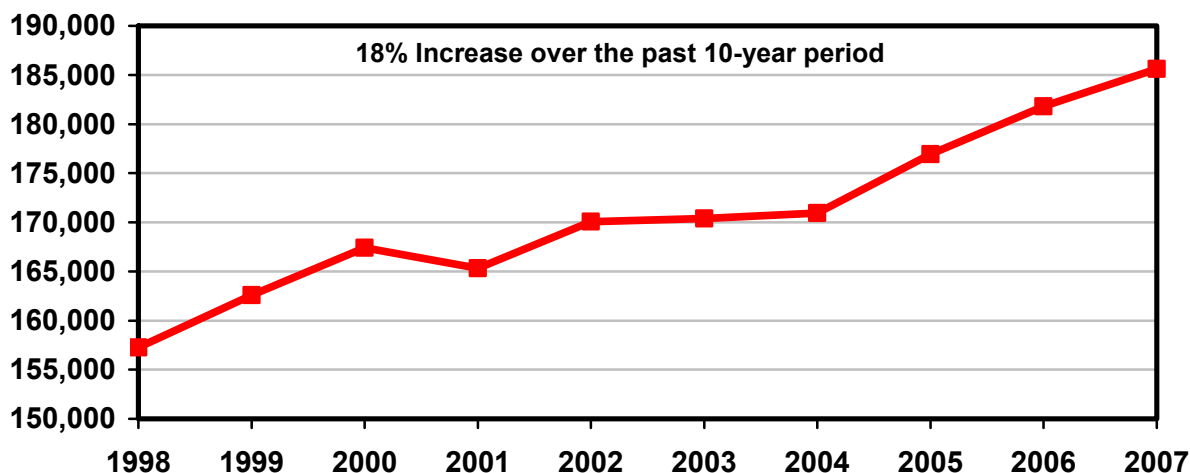
¹ May not add due to rounding.

² Average number during year, excluding heifers not yet fresh.

³ Excludes milk sucked by calves.

Milk Production 1998-2007 United States

Million Pounds



Milk Cows and Production: By State, United States, and Puerto Rico, 2006-2007

State	Milk Cows ¹		Milk Per Cow ²		Milk Production ²		Change From 2006
	2006	2007	2006	2007	2006	2007	
	<i>1,000 Head</i>	<i>1,000 Head</i>	<i>Pounds</i>	<i>Pounds</i>	<i>Million Pounds</i>	<i>Million Pounds</i>	<i>Percent</i>
AL	14	13	14,500	15,154	203	197	-3.0
AK	0.8	0.6	12,250	14,667	9.8	8.8	-10.2
AZ	173	181	22,855	23,260	3,954	4,210	6.5
AR	20	17	12,900	12,941	258	220	-14.7
CA	1,780	1,813	21,815	22,440	38,830	40,683	4.8
CO	110	118	23,155	22,915	2,547	2,704	6.2
CT	19	19	19,316	19,211	367	365	-0.5
DE	7.0	6.8	16,286	16,618	114.0	113.0	-0.9
FL	132	127	16,447	16,622	2,171	2,111	-2.8
GA	77	77	18,234	18,169	1,404	1,399	-0.4
HI	4.3	2.9	13,256	12,241	57.0	35.5	-37.7
ID	488	513	22,346	22,513	10,905	11,549	5.9
IL	103	103	19,252	18,612	1,983	1,917	-3.3
IN	165	166	19,861	20,307	3,277	3,371	2.9
IA	205	213	20,127	20,085	4,126	4,278	3.7
KS	112	109	20,938	19,734	2,345	2,151	-8.3
KY	98	90	13,296	13,889	1,303	1,250	-4.1
LA	32	29	12,375	12,034	396	349	-11.9
ME	32	33	17,938	17,788	574	587	2.3
MD	64	58	17,281	18,017	1,106	1,045	-5.5
MA	16	15	17,375	17,000	278	255	-8.3
MI	320	335	22,234	22,681	7,115	7,598	6.8
MN	450	460	18,600	18,817	8,370	8,656	3.4
MS	23	21	14,957	15,429	344	324	-5.8
MO	115	112	16,000	14,982	1,840	1,678	-8.8
MT	19	18	18,632	18,500	354	333	-5.9
NE	61	59	18,328	18,220	1,118	1,075	-3.8
NV	27	27	20,148	20,370	544	550	1.1
NH	15	14	19,533	20,714	293	290	-1.0
NJ	11	10	16,182	16,800	178	168	-5.6
NM	355	342	21,493	21,363	7,630	7,306	-4.2
NY	638	627	18,879	19,303	12,045	12,103	0.5
NC	51	48	18,510	19,188	944	921	-2.4
ND	32	29	14,688	15,310	470	444	-5.5
OH	274	276	17,737	18,043	4,860	4,980	2.5
OK	73	69	16,630	16,580	1,214	1,144	-5.8
OR	118	115	19,000	19,417	2,242	2,233	-0.4
PA	554	550	19,390	19,422	10,742	10,682	-0.6
RI	1.1	1.1	17,273	16,455	19.0	18.1	-4.7
SC	17	18	16,294	17,889	277	322	16.2
SD	81	85	18,580	19,306	1,505	1,641	9.0
TN	67	63	15,657	15,857	1,049	999	-4.8
TX	335	349	21,328	21,143	7,145	7,379	3.3
UT	86	85	20,314	20,376	1,747	1,732	-0.9
VT	141	140	18,383	18,079	2,592	2,531	-2.4
VA	102	100	17,363	17,530	1,771	1,753	-1.0
WA	237	238	23,055	23,239	5,464	5,531	1.2
WV	13	13	15,385	15,308	200	199	-0.5
WI	1,243	1,247	18,824	19,310	23,398	24,080	2.9
WY	6.7	7.1	17,612	18,831	118.0	133.7	13.3
US ³	9,112	9,158	19,951	20,267	181,796	185,602	2.1
PR ⁴	90	88	8,222	8,182	740	720	-2.7

¹ Average number during year, excluding heifers not yet fresh.

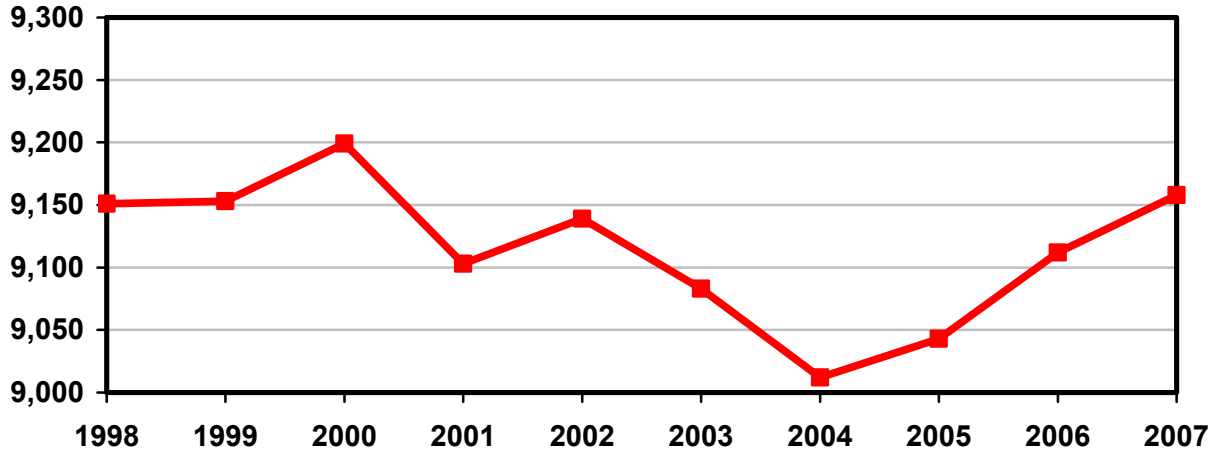
² Excludes milk sucked by calves.

³ May not add due to rounding.

⁴ Puerto Rico is not included in the U.S. total.

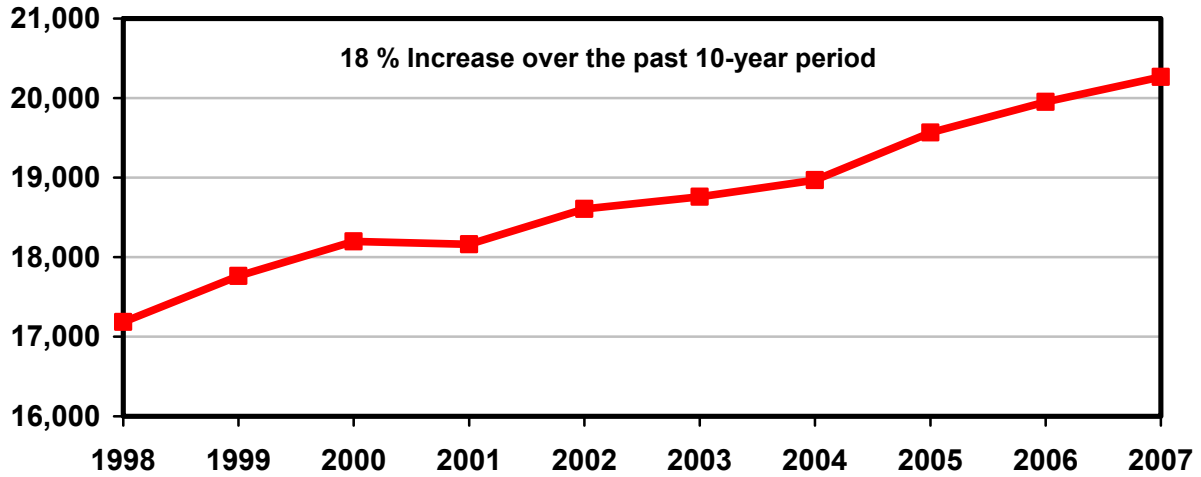
Milk Cows 1998-2007 United States

Thousand Head



Rate per Cow 1998-2007 United States

Pounds



Milk Cows: Number by Month, State, 23 State, and United States, 2006¹

State	Jan	Feb	Mar	Apr	May	Jun	
	<i>1,000 Head</i>	<i>1,000 Head</i>	<i>1,000 Head</i>	<i>1,000 Head</i>	<i>1,000 Head</i>	<i>1,000 Head</i>	
AZ	171	171	172	172	172	173	
CA	1,776	1,779	1,781	1,784	1,785	1,786	
CO	106	106	107	108	110	111	
FL	134	134	133	133	133	132	
ID	473	473	476	478	484	489	
IL	104	104	104	104	103	103	
IN	161	162	163	165	166	166	
IA	200	201	201	202	204	206	
KS	111	111	111	112	113	113	
KY	101	101	100	99	98	98	
MI	314	314	316	318	320	322	
MN	445	450	450	450	450	450	
MO	114	114	115	116	116	116	
NM	342	344	347	350	356	360	
NY	647	645	645	644	643	640	
OH	273	273	273	273	273	274	
OR	120	119	118	118	118	118	
PA	557	555	555	557	556	555	
TX	326	328	332	333	333	333	
VT	143	143	143	143	142	141	
VA	103	103	103	103	103	103	
WA	237	236	238	237	237	237	
WI	1,240	1,240	1,241	1,241	1,242	1,243	
23-Sts	8,198	8,206	8,224	8,240	8,257	8,269	
US ³	9,080	9,087	9,107	9,119	9,130	9,135	
	Jul	Aug	Sep	Oct	Nov	Dec	Annual Avg. ²
AZ	173	174	174	175	175	175	173
CA	1,774	1,770	1,773	1,778	1,782	1,787	1,780
CO	112	112	112	112	113	114	110
FL	131	130	129	129	130	130	132
ID	490	497	497	497	497	500	488
IL	103	103	103	103	103	103	103
IN	166	165	165	165	166	166	165
IA	206	207	208	208	209	209	205
KS	113	113	113	112	112	111	112
KY	97	96	96	95	95	94	98
MI	322	320	321	321	323	326	320
MN	450	450	450	450	450	455	450
MO	115	115	115	115	115	115	115
NM	362	362	360	360	360	360	355
NY	638	634	631	630	626	628	638
OH	274	274	274	274	274	274	274
OR	118	118	117	117	117	116	118
PA	555	554	553	552	550	549	554
TX	335	337	338	340	342	346	335
VT	141	141	140	140	140	140	141
VA	103	102	102	102	101	100	102
WA	237	238	237	236	235	235	237
WI	1,243	1,244	1,244	1,244	1,245	1,245	1,243
23-Sts	8,258	8,256	8,252	8,255	8,260	8,278	8,246
US ³	9,120	9,113	9,107	9,108	9,110	9,129	9,112

¹ Includes dry cows, excludes heifers not yet fresh.

² Average based on monthly totals.

³ U.S. monthly estimates are derived by proportionally allocating the quarterly estimates using the 23-state monthly total.

Milk Cows: Number by Month, State, 23 State, and United States, 2007¹

State	Jan	Feb	Mar	Apr	May	Jun	
	<i>1,000 Head</i>	<i>1,000 Head</i>	<i>1,000 Head</i>	<i>1,000 Head</i>	<i>1,000 Head</i>	<i>1,000 Head</i>	
AZ	175	175	179	182	182	182	
CA	1,792	1,795	1,799	1,801	1,806	1,811	
CO	115	115	115	115	116	118	
FL	130	130	130	129	128	126	
ID	502	504	504	503	506	508	
IL	103	103	103	103	103	103	
IN	165	165	167	168	167	167	
IA	210	211	211	211	212	214	
KS	110	110	110	110	109	109	
KY	93	93	93	92	91	90	
MI	328	328	329	331	332	334	
MN	455	455	455	455	458	460	
MO	115	115	115	114	114	112	
NM	357	353	349	345	341	335	
NY	628	628	628	627	626	626	
OH	275	275	275	275	276	276	
OR	115	115	115	115	115	114	
PA	549	548	550	550	549	549	
TX	347	347	347	347	347	348	
VT	140	140	140	140	140	139	
VA	100	100	100	100	100	100	
WA	235	235	235	233	233	234	
WI	1,245	1,246	1,246	1,246	1,247	1,247	
23-Sts	8,284	8,286	8,295	8,292	8,298	8,302	
US ³	9,135	9,136	9,142	9,132	9,138	9,144	
	Jul	Aug	Sep	Oct	Nov	Dec	Annual Avg. ²
AZ	181	181	182	184	185	185	181
CA	1,816	1,819	1,822	1,826	1,830	1,835	1,813
CO	119	119	120	120	120	120	118
FL	127	126	125	125	125	124	127
ID	516	520	521	522	525	530	513
IL	103	103	103	103	103	103	103
IN	167	166	166	166	166	166	166
IA	215	215	215	215	215	215	213
KS	108	108	108	108	108	109	109
KY	89	88	88	87	88	90	90
MI	336	338	339	341	343	344	335
MN	463	463	463	463	463	463	460
MO	110	109	109	109	109	110	112
NM	335	335	336	337	337	339	342
NY	626	625	626	626	626	626	627
OH	276	276	277	277	277	278	276
OR	114	114	115	114	115	115	115
PA	550	550	550	551	550	550	550
TX	348	348	348	350	351	355	349
VT	139	139	140	140	140	140	140
VA	100	100	100	100	100	99	100
WA	236	240	240	242	244	243	238
WI	1,248	1,248	1,248	1,249	1,249	1,250	1,247
23-Sts	8,322	8,330	8,341	8,355	8,369	8,389	8,322
US ³	9,153	9,159	9,166	9,181	9,196	9,217	9,158

¹ Includes dry cows, excludes heifers not yet fresh.

² Average based on monthly totals.

³ U.S. monthly estimates are derived by proportionally allocating the quarterly estimates using the 23-state monthly total.

**Milk Produced per Cow: by Month,
State, 23 States, and United States, 2006¹**

State	Jan	Feb	Mar	Apr	May	Jun	
	<i>Pounds</i>	<i>Pounds</i>	<i>Pounds</i>	<i>Pounds</i>	<i>Pounds</i>	<i>Pounds</i>	
AZ	2,045	1,940	2,190	2,145	2,155	1,955	
CA	1,825	1,710	1,925	1,855	1,895	1,795	
CO	1,935	1,775	1,980	1,910	2,000	1,965	
FL	1,485	1,425	1,640	1,540	1,520	1,415	
ID	1,830	1,670	1,880	1,850	1,940	1,910	
IL	1,630	1,540	1,720	1,680	1,690	1,590	
IN	1,720	1,575	1,775	1,715	1,750	1,670	
IA	1,750	1,610	1,780	1,735	1,765	1,680	
KS	1,790	1,650	1,840	1,810	1,870	1,770	
KY	1,160	1,070	1,260	1,220	1,220	1,090	
MI	1,890	1,725	1,905	1,850	1,920	1,865	
MN	1,605	1,460	1,625	1,575	1,620	1,560	
MO	1,440	1,320	1,500	1,500	1,470	1,320	
NM	1,845	1,700	1,910	1,870	1,980	1,875	
NY	1,595	1,475	1,630	1,590	1,660	1,595	
OH	1,490	1,390	1,560	1,530	1,610	1,470	
OR	1,560	1,450	1,650	1,630	1,680	1,620	
PA	1,650	1,550	1,700	1,650	1,700	1,620	
TX	1,840	1,735	1,975	1,905	1,955	1,820	
VT	1,580	1,450	1,610	1,560	1,630	1,545	
VA	1,510	1,410	1,560	1,555	1,560	1,415	
WA	1,940	1,790	1,980	1,950	2,025	1,960	
WI	1,585	1,455	1,620	1,580	1,650	1,590	
23-Sts	1,711	1,586	1,775	1,726	1,782	1,697	
US ²	1,690	1,567	1,753	1,704	1,760	1,678	
	Jul	Aug	Sep	Oct	Nov	Dec	Annual Avg.
AZ	1,775	1,645	1,620	1,720	1,750	1,915	22,855
CA	1,760	1,860	1,775	1,815	1,760	1,845	21,815
CO	1,980	1,950	1,910	1,920	1,870	1,910	23,155
FL	1,350	1,180	1,110	1,185	1,245	1,390	16,447
ID	1,960	1,960	1,860	1,870	1,790	1,840	22,346
IL	1,600	1,550	1,485	1,550	1,510	1,620	19,252
IN	1,650	1,600	1,565	1,625	1,590	1,670	19,861
IA	1,680	1,620	1,560	1,630	1,620	1,700	20,127
KS	1,720	1,740	1,630	1,680	1,660	1,770	20,938
KY	1,050	990	1,010	1,050	1,060	1,160	13,296
MI	1,895	1,840	1,800	1,835	1,810	1,915	22,234
MN	1,560	1,525	1,470	1,515	1,495	1,590	18,600
MO	1,270	1,185	1,180	1,240	1,250	1,300	16,000
NM	1,880	1,780	1,650	1,675	1,635	1,680	21,493
NY	1,605	1,580	1,515	1,550	1,515	1,580	18,879
OH	1,470	1,440	1,430	1,440	1,440	1,485	17,737
OR	1,640	1,640	1,580	1,570	1,480	1,520	19,000
PA	1,600	1,580	1,560	1,600	1,560	1,620	19,390
TX	1,760	1,655	1,585	1,650	1,675	1,765	21,328
VT	1,540	1,510	1,460	1,485	1,445	1,520	18,383
VA	1,390	1,350	1,320	1,370	1,365	1,480	17,363
WA	1,960	1,980	1,880	1,910	1,815	1,890	23,055
WI	1,610	1,575	1,520	1,555	1,500	1,590	18,824
23-Sts	1,687	1,676	1,612	1,651	1,613	1,693	20,209
US ²	1,662	1,652	1,590	1,630	1,593	1,672	19,951

¹ Excludes milk sucked by calves.

² U.S. monthly estimates are derived by proportionally allocating the quarterly estimates using the 23-state monthly total.

**Milk Produced per Cow: by Month,
State, 23 States and United States, 2007¹**

State	Jan	Feb	Mar	Apr	May	Jun	
	<i>Pounds</i>	<i>Pounds</i>	<i>Pounds</i>	<i>Pounds</i>	<i>Pounds</i>	<i>Pounds</i>	
AZ	2,030	1,930	2,195	2,090	2,105	1,965	
CA	1,880	1,755	1,975	1,915	1,925	1,845	
CO	1,855	1,670	1,910	1,900	1,990	1,960	
FL	1,470	1,415	1,610	1,580	1,615	1,465	
ID	1,850	1,680	1,880	1,860	1,930	1,910	
IL	1,645	1,460	1,655	1,645	1,670	1,550	
IN	1,720	1,580	1,770	1,725	1,740	1,675	
IA	1,730	1,620	1,750	1,710	1,775	1,675	
KS	1,670	1,510	1,720	1,680	1,710	1,650	
KY	1,220	1,100	1,260	1,270	1,250	1,170	
MI	1,945	1,750	1,955	1,915	1,935	1,905	
MN	1,635	1,485	1,650	1,610	1,660	1,565	
MO	1,300	1,180	1,370	1,395	1,380	1,240	
NM	1,690	1,535	1,790	1,740	1,870	1,815	
NY	1,610	1,480	1,630	1,605	1,690	1,620	
OH	1,530	1,380	1,560	1,550	1,640	1,550	
OR	1,670	1,590	1,750	1,670	1,710	1,650	
PA	1,640	1,500	1,710	1,690	1,720	1,590	
TX	1,780	1,640	1,920	1,860	1,870	1,740	
VT	1,560	1,385	1,535	1,495	1,555	1,510	
VA	1,540	1,380	1,570	1,550	1,570	1,440	
WA	1,930	1,780	2,000	1,970	2,025	1,975	
WI	1,630	1,470	1,640	1,615	1,685	1,620	
23-Sts	1,726	1,584	1,783	1,745	1,791	1,712	
US ²	1,708	1,567	1,765	1,726	1,771	1,692	
	Jul	Aug	Sep	Oct	Nov	Dec	Annual Avg.
AZ	1,875	1,760	1,705	1,850	1,830	1,925	23,260
CA	1,900	1,900	1,785	1,870	1,810	1,885	22,440
CO	2,005	1,975	1,900	1,930	1,900	1,965	22,915
FL	1,380	1,215	1,150	1,120	1,200	1,360	16,622
ID	1,970	1,970	1,880	1,880	1,810	1,870	22,513
IL	1,550	1,480	1,440	1,490	1,470	1,580	18,612
IN	1,700	1,670	1,635	1,685	1,650	1,705	20,307
IA	1,700	1,640	1,580	1,630	1,590	1,665	20,085
KS	1,660	1,600	1,610	1,650	1,640	1,650	19,734
KY	1,150	1,035	1,040	1,115	1,100	1,145	13,889
MI	1,940	1,915	1,830	1,860	1,825	1,895	22,681
MN	1,575	1,555	1,485	1,530	1,500	1,580	18,817
MO	1,220	1,170	1,140	1,190	1,190	1,210	14,982
NM	1,850	1,855	1,800	1,845	1,780	1,835	21,363
NY	1,650	1,640	1,570	1,630	1,575	1,620	19,303
OH	1,530	1,470	1,425	1,470	1,430	1,500	18,043
OR	1,675	1,665	1,550	1,545	1,490	1,515	19,417
PA	1,610	1,610	1,550	1,610	1,580	1,620	19,422
TX	1,720	1,670	1,640	1,740	1,760	1,825	21,143
VT	1,555	1,540	1,465	1,510	1,465	1,545	18,079
VA	1,450	1,390	1,350	1,410	1,400	1,495	17,530
WA	2,000	2,000	1,905	1,930	1,850	1,930	23,239
WI	1,675	1,645	1,575	1,600	1,550	1,600	19,310
23-Sts	1,742	1,719	1,645	1,697	1,654	1,718	20,516
US ²	1,717	1,695	1,622	1,674	1,633	1,696	20,267

¹ Excludes milk sucked by calves.

² U.S. monthly estimates are derived by proportionally allocating the quarterly estimates using the 23-state monthly total.

**Milk Production: Total by Month, State,
23 States, and United States, 2006¹**

State	Jan	Feb	Mar	Apr	May	Jun	
	<i>Million Pounds</i>	<i>Million Pounds</i>	<i>Million Pounds</i>	<i>Million Pounds</i>	<i>Million Pounds</i>	<i>Million Pounds</i>	
AZ	350	332	377	369	371	338	
CA	3,241	3,042	3,428	3,309	3,383	3,206	
CO	205	188	212	206	220	218	
FL	199	191	218	205	202	187	
ID	866	790	895	884	939	934	
IL	170	160	179	175	174	164	
IN	277	255	289	283	291	277	
IA	350	324	358	350	360	346	
KS	199	183	204	203	211	200	
KY	117	108	126	121	120	107	
MI	593	542	602	588	614	601	
MN	714	657	731	709	729	702	
MO	164	150	173	174	171	153	
NM	631	585	663	655	705	675	
NY	1,032	951	1,051	1,024	1,067	1,021	
OH	407	379	426	418	440	403	
OR	187	173	195	192	198	191	
PA	919	860	944	919	945	899	
TX	600	569	656	634	651	606	
VT	226	207	230	223	231	218	
VA	156	145	161	160	161	146	
WA	460	422	471	462	480	465	
WI	1,965	1,804	2,010	1,961	2,049	1,976	
23-Sts	14,028	13,017	14,599	14,224	14,712	14,033	
US ³	15,345	14,239	15,966	15,535	16,070	15,331	
	Jul	Aug	Sep	Oct	Nov	Dec	Annual Total ²
AZ	307	286	282	301	306	335	3,954
CA	3,122	3,292	3,147	3,227	3,136	3,297	38,830
CO	222	218	214	215	211	218	2,547
FL	177	153	143	153	162	181	2,171
ID	960	974	924	929	890	920	10,905
IL	165	160	153	160	156	167	1,983
IN	274	264	258	268	264	277	3,277
IA	346	335	324	339	339	355	4,126
KS	194	197	184	188	186	196	2,345
KY	102	95	97	100	101	109	1,303
MI	610	589	578	589	585	624	7,115
MN	702	686	662	682	673	723	8,370
MO	146	136	136	143	144	150	1,840
NM	681	644	594	603	589	605	7,630
NY	1,024	1,002	956	977	948	992	12,045
OH	403	395	392	395	395	407	4,860
OR	194	194	185	184	173	176	2,242
PA	888	875	863	883	858	889	10,742
TX	590	558	536	561	573	611	7,145
VT	217	213	204	208	202	213	2,592
VA	143	138	135	140	138	148	1,771
WA	465	471	446	451	427	444	5,464
WI	2,001	1,959	1,891	1,934	1,868	1,980	23,398
23-Sts	13,933	13,834	13,304	13,630	13,324	14,017	166,655
US ³	15,160	15,053	14,478	14,842	14,509	15,268	181,796

¹ Excludes milk sucked by calves.

² Total milk production for year.

³ U.S. monthly estimates are derived by proportionally allocating the quarterly estimates using the 23-state monthly total.

**Milk Production: Total by Month, State,
23 States, and United States, 2007 ¹**

State	Jan	Feb	Mar	Apr	May	Jun	
	<i>Million Pounds</i>	<i>Million Pounds</i>	<i>Million Pounds</i>	<i>Million Pounds</i>	<i>Million Pounds</i>	<i>Million Pounds</i>	
AZ	355	338	393	380	383	358	
CA	3,369	3,150	3,553	3,449	3,477	3,341	
CO	213	192	220	219	231	231	
FL	191	184	209	204	207	185	
ID	929	847	948	936	977	970	
IL	169	150	170	169	172	160	
IN	284	261	296	290	291	280	
IA	363	342	369	361	376	358	
KS	184	166	189	185	186	180	
KY	113	102	117	117	114	105	
MI	638	574	643	634	642	636	
MN	744	676	751	733	760	720	
MO	150	136	158	159	157	139	
NM	603	542	625	600	638	608	
NY	1,011	929	1,024	1,006	1,058	1,014	
OH	421	380	429	426	453	428	
OR	192	183	201	192	197	188	
PA	900	822	941	930	944	873	
TX	618	569	666	645	649	606	
VT	218	194	215	209	218	210	
VA	154	138	157	155	157	144	
WA	454	418	470	459	472	462	
WI	2,029	1,832	2,043	2,012	2,101	2,020	
23-Sts	14,302	13,125	14,787	14,470	14,860	14,216	
US ³	15,605	14,321	16,132	15,763	16,180	15,476	
	Jul	Aug	Sep	Oct	Nov	Dec	Annual Total ²
AZ	339	319	310	340	339	356	4,210
CA	3,450	3,456	3,252	3,415	3,312	3,459	40,683
CO	239	235	228	232	228	236	2,704
FL	175	153	144	140	150	169	2,111
ID	1,017	1,024	979	981	950	991	11,549
IL	160	152	148	153	151	163	1,917
IN	284	277	271	280	274	283	3,371
IA	366	353	340	350	342	358	4,278
KS	179	173	174	178	177	180	2,151
KY	102	91	92	97	97	103	1,250
MI	652	647	620	634	626	652	7,598
MN	729	720	688	708	695	732	8,656
MO	134	128	124	130	130	133	1,678
NM	620	621	605	622	600	622	7,306
NY	1,033	1,025	983	1,020	986	1,014	12,103
OH	422	406	395	407	396	417	4,980
OR	191	190	178	176	171	174	2,233
PA	886	886	853	887	869	891	10,682
TX	599	581	571	609	618	648	7,379
VT	216	214	205	211	205	216	2,531
VA	145	139	135	141	140	148	1,753
WA	472	480	457	467	451	469	5,531
WI	2,090	2,053	1,966	1,998	1,936	2,000	24,080
23-Sts	14,500	14,323	13,718	14,176	13,843	14,414	170,734
US ³	15,714	15,525	14,871	15,370	15,013	15,632	185,602

¹ Excludes milk sucked by calves.

² Total milk production for year.

³ U.S. monthly estimates are derived by proportionally allocating the quarterly estimates using the 23-state monthly total.

**Milk Cows and Production: Number and Milk Produced
by Quarter, State, and United States, 2006**

State	Milk Cows ¹				Milk Production ²			
	Jan-Mar	Apr-Jun	Jul-Sep	Oct-Dec	Jan-Mar	Apr-Jun	Jul-Sep	Oct-Dec
	<i>1,000 Head</i>	<i>1,000 Head</i>	<i>1,000 Head</i>	<i>1,000 Head</i>	<i>Million Pounds</i>	<i>Million Pounds</i>	<i>Million Pounds</i>	<i>Million Pounds</i>
AL	14.0	14.0	14.0	13.0	60	55	41	47
AK	0.8	0.8	0.8	0.7	2.4	2.5	2.7	2.2
AZ	171	172	174	175	1,059	1,078	875	942
AR	20.0	20.0	19.0	19.0	69	71	58	60
CA	1,779	1,785	1,772	1,782	9,711	9,898	9,561	9,660
CO	106	110	112	113	605	644	654	644
CT	20.0	19.5	19.0	19.0	97	95	86	89
DE	7.0	7.0	7.0	7.0	30.0	30.0	26.0	28.0
FL	134	133	130	130	608	594	473	496
GA	78	77	76	75	379	383	312	330
HI	4.5	4.4	4.2	4.0	15.3	14.8	14.2	12.7
ID	474	484	495	498	2,551	2,757	2,858	2,739
IL	104	103	103	103	509	513	478	483
IN	162	166	165	166	821	851	796	809
IA	201	204	207	209	1,032	1,056	1,005	1,033
KS	111	113	113	112	586	614	575	570
KY	101	98	96	95	351	348	294	310
LA	33	32	31	30	119	111	80	86
ME	32	32	32	32	140	147	146	141
MD	67	66	63	61	292	292	258	264
MA	16.0	16.0	15.5	15.5	72	73	68	65
MI	315	320	321	323	1,737	1,803	1,777	1,798
MN	448	450	450	452	2,102	2,140	2,050	2,078
MS	23	23	22	22	100	94	72	78
MO	114	116	115	115	487	498	418	437
MT	19.0	19.0	18.0	18.0	90	92	87	85
NE	60	61	61	61	277	289	275	277
NV	27	27	27	27	135	135	136	138
NH	15.5	15.0	15.0	14.5	77	76	71	69
NJ	11.5	11.0	10.5	10.5	48	47	42	41
NM	344	355	361	360	1,879	2,035	1,919	1,797
NY	646	642	634	628	3,034	3,112	2,982	2,917
NC	52	51	50	49	254	253	217	220
ND	33	32	31	31	119	120	116	115
OH	273	273	274	274	1,212	1,261	1,190	1,197
OK	75	74	72	70	311	313	300	290
OR	119	118	118	117	555	581	573	533
PA	556	556	554	550	2,723	2,763	2,626	2,630
RI	1.1	1.1	1.1	1.1	4.6	5.0	4.8	4.6
SC	17.0	17.0	17.0	17.0	76	77	58	66
SD	81	81	81	81	364	382	380	379
TN	69	67	65	66	284	284	233	248
TX	329	333	337	343	1,825	1,891	1,684	1,745
UT	85	85	86	86	414	444	456	433
VT	143	142	141	140	663	672	634	623
VA	103	103	102	101	462	467	416	426
WA	237	237	237	235	1,353	1,407	1,382	1,322
WV	13.0	13.0	13.0	13.0	50	51	49	50
WI	1,240	1,242	1,244	1,245	5,779	5,986	5,851	5,782
WY	6.4	6.7	6.8	6.9	26.2	30.8	31.3	29.7
US ³	9,091	9,128	9,113	9,116	45,550	46,936	44,691	44,619

¹ Quarterly average includes dry cows, excludes heifers not yet fresh.

² Excludes milk sucked by calves.

³ May not add due to rounding.

**Milk Cows and Production: Number and Milk Produced
by Quarter, State, and United States, 2007**

State	Milk Cows ¹				Milk Production ²			
	Jan-Mar	Apr-Jun	Jul-Sep	Oct-Dec	Jan-Mar	Apr-Jun	Jul-Sep	Oct-Dec
	<i>1,000 Head</i>	<i>1,000 Head</i>	<i>1,000 Head</i>	<i>1,000 Head</i>	<i>Million Pounds</i>	<i>Million Pounds</i>	<i>Million Pounds</i>	<i>Million Pounds</i>
AL	13.0	13.0	13.0	13.0	58	54	40	45
AK	0.6	0.6	0.6	0.6	2.3	2.2	2.5	1.8
AZ	176	182	181	185	1,086	1,121	968	1,035
AR	18.0	17.5	17.0	17.0	61	60	49	50
CA	1,795	1,806	1,819	1,830	10,072	10,267	10,158	10,186
CO	115	116	119	120	625	681	702	696
CT	19.0	19.0	19.0	19.0	94	94	89	88
DE	7.0	7.0	6.5	6.5	30.0	30.0	26.0	27.0
FL	130	128	126	125	584	596	472	459
GA	77	77	77	77	381	388	312	318
HI	3.6	3.0	2.6	2.5	12.1	9.7	7.4	6.3
ID	503	506	519	526	2,724	2,883	3,020	2,922
IL	103	103	103	103	489	501	460	467
IN	166	167	166	166	841	861	832	837
IA	211	212	215	215	1,074	1,095	1,059	1,050
KS	110	109	108	108	539	551	526	535
KY	93	91	88	88	332	336	285	297
LA	30	29	28	27	105	97	71	76
ME	32	32	33	33	141	148	151	147
MD	60	59	57	57	276	265	249	255
MA	15.0	15.0	14.5	14.5	65	65	63	62
MI	328	332	338	343	1,855	1,912	1,919	1,912
MN	455	458	463	463	2,171	2,213	2,137	2,135
MS	22	21	21	21	94	90	68	72
MO	115	113	109	109	444	455	386	393
MT	18.0	18.0	17.0	17.0	84	87	82	80
NE	60	59	58	57	279	275	260	261
NV	27	27	27	27	139	135	138	138
NH	14.5	14.5	14.5	14.0	72	74	72	72
NJ	10.5	10.0	10.0	10.0	43	43	41	41
NM	353	340	335	338	1,770	1,846	1,846	1,844
NY	628	626	626	626	2,964	3,078	3,041	3,020
NC	48	48	47	48	242	242	216	221
ND	31	30	28	28	114	116	108	106
OH	275	276	276	277	1,230	1,307	1,223	1,220
OK	70	69	68	67	296	295	282	271
OR	115	115	114	115	576	577	559	521
PA	549	549	550	550	2,663	2,747	2,625	2,647
RI	1.1	1.1	1.1	1.1	4.4	4.6	4.6	4.5
SC	18.0	18.5	18.0	18.0	87	89	71	75
SD	84	85	85	86	401	417	410	413
TN	66	64	62	61	270	272	224	233
TX	347	347	348	352	1,853	1,900	1,751	1,875
UT	85	85	85	85	414	435	448	435
VT	140	140	139	140	627	637	635	632
VA	100	100	100	100	449	456	419	429
WA	235	233	239	243	1,342	1,393	1,409	1,387
WV	13.0	13.0	13.0	13.0	50	51	49	49
WI	1,246	1,247	1,248	1,249	5,904	6,133	6,109	5,934
WY	7.1	7.2	7.0	7.0	29.1	34.9	35.0	34.7
US ³	9,138	9,138	9,159	9,198	46,058	47,419	46,110	46,015

¹ Quarterly average includes dry cows, excludes heifers not yet fresh.

² Excludes milk sucked by calves.

³ May not add due to rounding.

**Number of Operations with Milk Cows and Number of Licensed Dairy Herds,
by State, United States, and Puerto Rico, 2006-2007**

State	2006		2007	
	Operations with Milk Cows ¹	Licensed Dairy Herds ²	Operations with Milk Cows ¹	Licensed Dairy Herds ²
	<i>Number</i>	<i>Number</i>	<i>Number</i>	<i>Number</i>
AL	170	75	150	70
AK	30	10	30	5
AZ	190	130	180	120
AR	280	190	250	170
CA	2,200	1,960	2,200	1,960
CO	630	170	600	150
CT	220	170	210	150
DE	90	55	80	50
FL	460	160	440	150
GA	560	300	480	280
HI	30	5	30	5
ID	800	690	750	665
IL	1,300	1,100	1,200	1,040
IN	2,100	1,750	2,000	1,660
IA	2,400	2,230	2,400	2,130
KS	900	450	800	430
KY	2,000	1,240	1,900	1,120
LA	350	250	320	210
ME	460	350	440	340
MD	800	630	750	585
MA	240	190	230	180
MI	2,700	2,530	2,600	2,440
MN	5,400	5,295	5,200	5,070
MS	330	190	310	170
MO	2,600	1,790	2,400	1,720
MT	600	110	550	85
NE	700	380	660	350
NV	100	30	90	25
NH	200	130	190	130
NJ	150	120	140	110
NM	450	170	420	170
NY	6,400	5,980	6,200	5,820
NC	590	345	470	310
ND	500	320	460	290
OH	4,300	3,530	4,200	3,430
OK	1,400	350	1,300	320
OR	710	320	670	310
PA	8,700	8,610	8,400	8,010
RI	30	15	30	15
SC	200	95	200	80
SD	750	600	670	540
TN	1,100	650	950	590
TX	1,300	740	1,200	700
UT	560	320	530	280
VT	1,300	1,170	1,200	1,120
VA	1,300	775	1,200	745
WA	790	610	760	530
WV	470	120	450	110
WI	14,900	14,640	14,400	14,170
WY	240	30	220	25
US	74,980	62,070	71,510	59,135
PR ³	1,500	360	1,500	350

¹ An operation is any place having one or more head of milk cows, excluding cows used to nurse calves, on hand at any time during the year.

² Average number of dairy farms licensed to sell milk, based on counts collected from State and other regulatory agencies.

³ Puerto Rico is not included in the U.S. total.

Reliability Statement

Survey Procedures: Primary data used to determine these estimates were obtained from a sample of producers. Individual States maintain a list of all known milk producers and information on the size of their herd. States use all known sources of producers to ensure that their lists are as complete as possible. Generally, all large producers and a sample of small producers are included in the survey. Questionnaires are mailed to producers near the end of the month to obtain data for the first day of the month. Additional reports are obtained by telephone, as needed, to supplement the mail response. Where feasible, States utilize state and federal administrative data, rather than conduct a monthly or quarterly survey, to estimate milk production. This eliminates duplication of data gathering by different government agencies. Indications of milk cow inventory are also obtained in the January and July Cattle Surveys.

Estimation Procedures: State offices prepare these estimates by using a combination of survey indications, historic trends, and any available administrative data. Individual State estimates are reviewed by the Agricultural Statistics Board for reasonableness.

Revision Policy: Milk production, rate per cow, and number of cows are subject to revision the following month for monthly States or the following quarter for the quarterly States. Normally, Federal Market Order sales are the main basis for revisions. However, data for all orders are not available in time for this revision. Estimates are again subject to revisions in February each year based on additional administrative data. In the event that additional changes are necessary, a third revision is possible in February the following year. Estimates are again reviewed after data from the five-year Census of Agriculture are available. No revisions are made after that date.

Reliability: Since all operations with dairy animals are not included in the sample, survey estimates are subject to sampling variability. Survey results are also subject to non-sampling errors such as omissions, duplications, and mistakes in reporting, recording, and processing the data. The effects of these errors cannot be measured directly. They are minimized through rigid quality controls in the data collection process and through a careful review of all reported data for consistency and reasonableness.

To assist users in evaluating the reliability of the estimates in this report, the "Root Mean Square Error" is shown for selected items on the next page. The "Root Mean Square Error" is a statistical measure based on past performance and is computed using the differences between first and final estimates. The "Root Mean Square Error" for milk cow inventory estimates over the past 10 October - December quarters is 0.3 percent. This means that chances are 2 out of 3 that the final October - December estimate will not be above or below the current estimate of 9.2 million head by more than 0.3 percent. Chances are 9 out of 10 that the difference will not exceed 0.6 percent.

Reliability of October-December Milk Estimates ¹

Item	Root Mean Square Error	90% Confidence Level		Difference Between First and Latest Estimates			Quarters	
				Average	Smallest	Largest	First Above Latest	First Below Latest
				Million Pounds	Million Pounds	Million Pounds	Number	Number
Milk Production	Percent 0.4	Percent 0.7	Million Pounds 322	Million Pounds 135	Million Pounds 15	Million Pounds 265	Number 6	Number 4
All Milk Cows	Percent 0.3	Percent 0.6	1,000 Head 55	1,000 Head 16	1,000 Head 1	1,000 Head 73	Number 7	Number 3

¹ Based on records for the past 10 October-December quarters.

Information Contacts

Listed below are the commodity specialists in the Livestock Branch of the National Agricultural Statistics Service to contact for additional information.

Dan Kerestes, Chief, Livestock Branch (202) 720-3570

Livestock Section

Shawn Clark, Head, Livestock Section (202) 720-3570
 Bruce Boess - Hogs and Pigs (202) 720-3106
 Jim Collom - Dairy Products (202) 690-3236
 Joe Gaynor - Dairy Products Prices (202) 690-2168
 Jason Hardegree - Milk Production and Milk Cows (202) 720-3278
 Benita Hodge - Livestock Slaughter (515) 284-4340
 Scott Hollis - Sheep and Goats (202) 720-4751
 Mike Miller - Cattle, Cattle on Feed (202) 720-3040

ACCESS TO REPORTS!!

For your convenience, there are several ways to obtain NASS reports, data products, and services:

INTERNET ACCESS

All NASS reports are available free of charge on the worldwide Internet. For access, connect to the Internet and go to the NASS Home Page at: www.nass.usda.gov.

E-MAIL SUBSCRIPTION

All NASS reports are available by subscription free of charge direct to your e-mail address. Starting with the NASS Home Page at www.nass.usda.gov, under the right navigation, *Receive reports by Email*, click on **National** or **State**. Follow the instructions on the screen.

PRINTED REPORTS OR DATA PRODUCTS

CALL OUR TOLL-FREE ORDER DESK: 800-999-6779 (U.S. and Canada)
Other areas, please call 703-605-6220 FAX: 703-605-6900
(Visa, MasterCard, check, or money order acceptable for payment.)

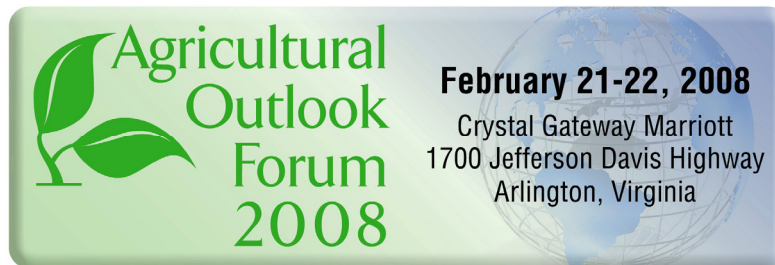
ASSISTANCE

For **assistance** with general agricultural statistics or further information about NASS or its products or services, contact the **Agricultural Statistics Hotline** at **800-727-9540**, 7:30 a.m. to 4:00 p.m. ET, or e-mail: nass@nass.usda.gov.

The U.S. Department of Agriculture (USDA) prohibits discrimination in all its programs and activities on the basis of race, color, national origin, age, disability, and where applicable, sex, marital status, familial status, parental status, religion, sexual orientation, genetic information, political beliefs, reprisal, or because all or a part of an individual's income is derived from any public assistance program. (Not all prohibited bases apply to all programs.) Persons with disabilities who require alternative means for communication of program information (Braille, large print, audiotape, etc.) should contact USDA's TARGET Center at (202) 720-2600 (voice and TDD).

To file a complaint of discrimination, write to USDA, Director, Office of Civil Rights, 1400 Independence Avenue, S.W., Washington, D.C. 20250-9410, or call (800) 795-3272 (voice) or (202) 720-6382 (TDD). USDA is an equal opportunity provider and employer.

Energizing Rural America in the Global Marketplace



Please join us for USDA's 84th annual Forum as the Secretary of Agriculture and government, farm, and industry leaders discuss the future of American agriculture.

- ❖ More than 100 experts are scheduled to speak.
- ❖ Topical sessions include luncheon and dinner speakers.
- ❖ Extensive networking opportunities.

Forecasts • Trends • Policies

Register at: www.usda.gov/oce/forum for \$300