

Milk Production

Released March 17, 2008, by the National Agricultural Statistics Service (NASS), Agricultural Statistics Board, U.S. Department of Agriculture. For information on *Milk Production* call Jason Hardegree at 202-720-3278, office hours 7:30 a.m. to 4:00 p.m. ET.

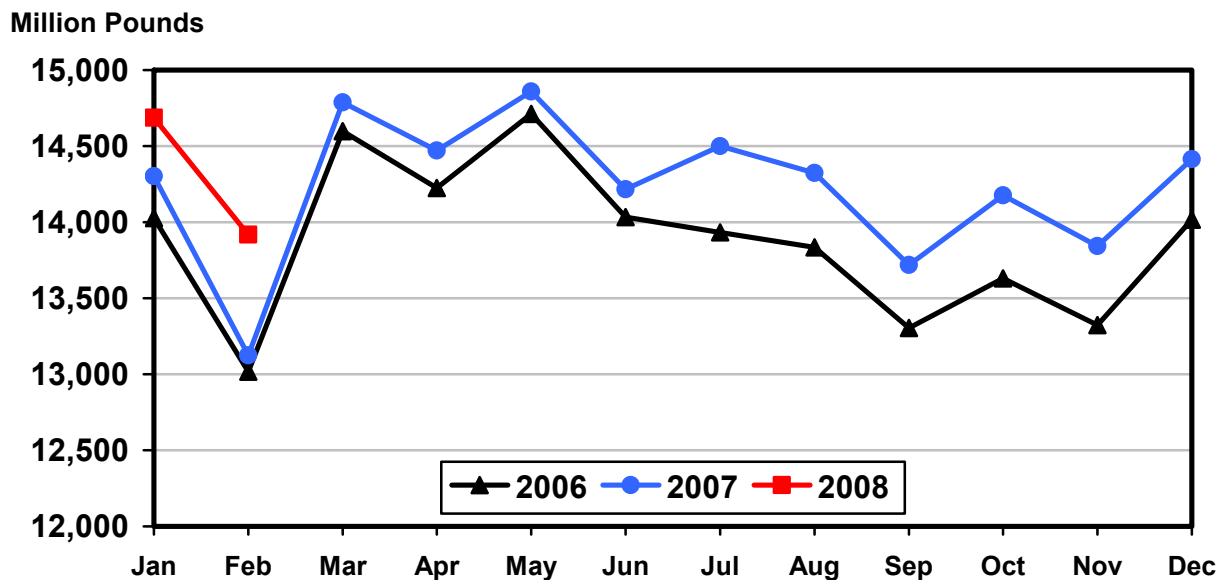
February Milk Production up 6.0 Percent

Milk production in the 23 major States during February totaled 13.9 billion pounds, up 6.0 percent from February 2007. January revised production at 14.7 billion pounds, was up 2.7 percent from January 2007. The January revision represented an increase of 40 million pounds or 0.3 percent from last month's preliminary production estimate.

Production per cow in the 23 major States averaged 1,653 pounds for February, 69 pounds above February 2007.

The number of milk cows on farms in the 23 major States was 8.42 million head, 136,000 head more than February 2007, and 9,000 head more than January 2008.

Monthly Milk Production 23 States



Milk Cows and Production: By Quarter, United States, 2007-2008¹

Quarter	Milk Cows ²		Milk Per Cow ³		Milk Production ³		
	2007	2008	2007	2008	2007	2008	Change From 2007
	<i>1,000 Head</i>	<i>1,000 Head</i>	<i>Pounds</i>	<i>Pounds</i>	<i>Million Pounds</i>	<i>Million Pounds</i>	<i>Percent</i>
Jan-Mar	9,138		5,040		46,058		
Apr-Jun	9,138		5,189		47,419		
Jul-Sep	9,159		5,034		46,110		
Oct-Dec	9,198		5,003		46,015		
Annual	9,158		20,267		185,602		

¹ May not add due to rounding.

² Includes dry cows, excludes heifers not yet fresh.

³ Excludes milk sucked by calves.

Milk Cows and Production: By Month, 23 Selected States, 2007-2008¹

Month	Milk Cows ²		Milk Per Cow ³		Milk Production ³		
	2007	2008	2007	2008	2007	2008	Change from 2007
	<i>1,000 Head</i>	<i>1,000 Head</i>	<i>Pounds</i>	<i>Pounds</i>	<i>Million Pounds</i>	<i>Million Pounds</i>	<i>Percent</i>
Jan	8,284	8,413	1,726	1,746	14,302	14,688	2.7
Feb	8,286	8,422	1,584	1,653	13,125	13,919	6.0
Mar	8,295		1,783		14,787		
Apr	8,292		1,745		14,470		
May	8,298		1,791		14,860		
Jun	8,302		1,712		14,216		
Jul	8,322		1,742		14,500		
Aug	8,330		1,719		14,323		
Sep	8,341		1,645		13,718		
Oct	8,355		1,697		14,176		
Nov	8,369		1,654		13,843		
Dec	8,389		1,718		14,414		
Annual	8,322		20,516		170,734		

¹ 2008 previous month revised.

² Includes dry cows, excludes heifers not yet fresh.

³ Excludes milk sucked by calves.

Estimated Milk Cows and Production: By Month, United States, 2007-2008¹

Month	Milk Cows ²		Milk Per Cow ³		Milk Production ³		
	2007	2008	2007	2008	2007	2008	Change From 2007
	<i>1,000 Head</i>	<i>1,000 Head</i>	<i>Pounds</i>	<i>Pounds</i>	<i>Million Pounds</i>	<i>Million Pounds</i>	<i>Percent</i>
Jan	9,135	9,240	1,708	1,725	15,605	15,941	2.2
Feb	9,136	9,248	1,567	1,634	14,321	15,107	5.5
Mar	9,142		1,765		16,132		
Apr	9,132		1,726		15,763		
May	9,138		1,771		16,180		
Jun	9,144		1,692		15,476		
Jul	9,153		1,717		15,714		
Aug	9,159		1,695		15,525		
Sep	9,166		1,622		14,871		
Oct	9,181		1,674		15,370		
Nov	9,196		1,633		15,013		
Dec	9,217		1,696		15,632		
Annual	9,158		20,267		185,602		

¹ 2008 revised.

² Includes dry cows, excludes heifers not yet fresh.

³ Excludes milk sucked by calves.

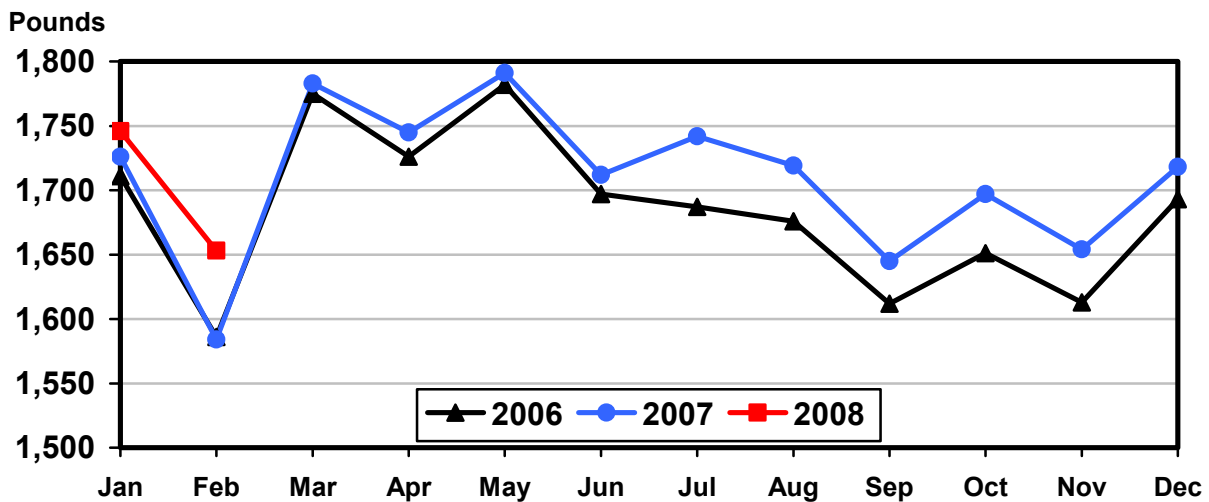
Milk Cows and Production: By State, February 2007-2008

State	Milk Cows ¹		Milk Per Cow ²		Milk Production ²		
	2007	2008	2007	2008	2007	2008	Change From 2007
	<i>1,000 Head</i>	<i>1,000 Head</i>	<i>Pounds</i>	<i>Pounds</i>	<i>Million Pounds</i>	<i>Million Pounds</i>	<i>Percent</i>
AZ	175	185	1,930	1,960	338	363	7.4
CA	1,795	1,841	1,755	1,805	3,150	3,323	5.5
CO	115	125	1,670	1,815	192	227	18.2
FL	130	124	1,415	1,490	184	185	0.5
ID	504	534	1,680	1,760	847	940	11.0
IL	103	102	1,460	1,515	150	155	3.3
IN	165	167	1,580	1,600	261	267	2.3
IA	211	216	1,620	1,600	342	346	1.2
KS	110	109	1,510	1,660	166	181	9.0
KY	93	91	1,100	1,110	102	101	-1.0
MI	328	344	1,750	1,760	574	605	5.4
MN	455	463	1,485	1,525	676	706	4.4
MO	115	110	1,180	1,170	136	129	-5.1
NM	353	339	1,535	1,790	542	607	12.0
NY	628	626	1,480	1,590	929	995	7.1
OH	275	279	1,380	1,440	380	402	5.8
OR	115	114	1,590	1,475	183	168	-8.2
PA	548	551	1,500	1,530	822	843	2.6
TX	347	370	1,640	1,785	569	660	16.0
VT	140	140	1,385	1,500	194	210	8.2
VA	100	98	1,380	1,450	138	142	2.9
WA	235	244	1,780	1,850	418	451	7.9
WI	1,246	1,250	1,470	1,530	1,832	1,913	4.4
23-State Total	8,286	8,422	1,584	1,653	13,125	13,919	6.0

¹ Includes dry cows, excludes heifers not yet fresh.

² Excludes milk sucked by calves.

Monthly Milk per Cow 23 States



Milk Cows and Production: By State, January 2007-2008¹

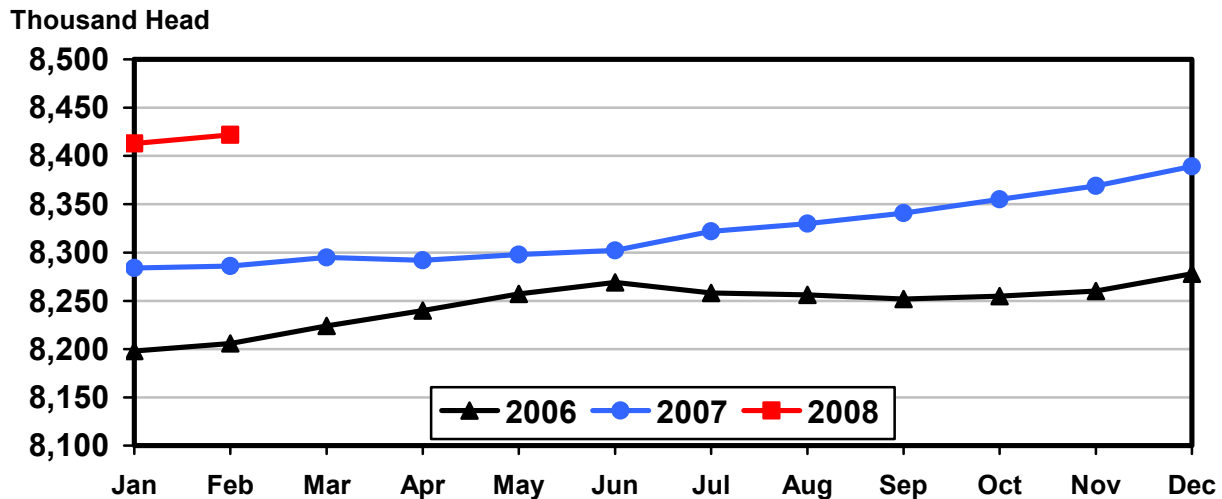
State	Milk Cows ²		Milk per Cow ³		Milk Production ³		
	2007	2008	2007	2008	2007	2008	Change From 2007
	<i>1,000 Head</i>	<i>1,000 Head</i>	<i>Pounds</i>	<i>Pounds</i>	<i>Million Pounds</i>	<i>Million Pounds</i>	<i>Percent</i>
AZ	175	185	2,030	2,020	355	374	5.4
CA	1,792	1,839	1,880	1,900	3,369	3,494	3.7
CO	115	122	1,855	1,945	213	237	11.3
FL	130	124	1,470	1,500	191	186	-2.6
ID	502	534	1,850	1,870	929	999	7.5
IL	103	103	1,645	1,615	169	166	-1.8
IN	165	167	1,720	1,710	284	286	0.7
IA	210	216	1,730	1,680	363	363	
KS	110	109	1,670	1,695	184	185	0.5
KY	93	91	1,220	1,180	113	107	-5.3
MI	328	344	1,945	1,910	638	657	3.0
MN	455	463	1,635	1,610	744	745	0.1
MO	115	110	1,300	1,225	150	135	-10.0
NM	357	340	1,690	1,880	603	639	6.0
NY	628	626	1,610	1,660	1,011	1,039	2.8
OH	275	278	1,530	1,540	421	428	1.7
OR	115	114	1,670	1,555	192	177	-7.8
PA	549	552	1,640	1,630	900	900	
TX	347	365	1,780	1,855	618	677	9.5
VT	140	140	1,560	1,585	218	222	1.8
VA	100	98	1,540	1,540	154	151	-1.9
WA	235	243	1,930	1,965	454	477	5.1
WI	1,245	1,250	1,630	1,635	2,029	2,044	0.7
23-State Total	8,284	8,413	1,726	1,746	14,302	14,688	2.7

¹ 2008 revised.

² Includes dry cows, excludes heifers not yet fresh.

³ Excludes milk sucked by calves.

Monthly Milk Cows 23 States



Reliability Statement

Survey Procedures: Primary data used to determine these estimates were obtained from a sample of producers. Individual States maintain a list of all known milk producers and information on the size of their herd. States use all known sources of producers to ensure that their lists are as complete as possible. Generally, all large producers and a sample of small producers are included in the survey. Questionnaires are mailed to producers near the end of the month to obtain data for the first day of the month. Additional reports are obtained by telephone, as needed, to supplement the mail response. Where feasible, States utilize state and federal administrative data, rather than conduct a monthly or quarterly survey, to estimate milk production. This eliminates duplication of data gathering by different government agencies. Indications of milk cow inventory are also obtained in the January and July Cattle Surveys.

Estimation Procedures: State offices prepare these estimates by using a combination of survey indications, historic trends, and any available administrative data. Individual State estimates are reviewed by the Agricultural Statistics Board for reasonableness.

Revision Policy: Milk production, rate per cow, and number of cows are subject to revision the following month for monthly States or the following quarter for the quarterly States. Normally, Federal Market Order sales are the main basis for revisions. However, data for all orders are not available in time for this revision. Estimates are again subject to revisions in February each year based on additional administrative data. In the event that additional changes are necessary, a third revision is possible in February the following year. Estimates are again reviewed after data from the five-year Census of Agriculture are available. No revisions are made after that date.

Reliability: Since all operations with dairy animals are not included in the sample, survey estimates are subject to sampling variability. Survey results are also subject to non-sampling errors such as omissions, duplications, and mistakes in reporting, recording, and processing the data. The effects of these errors cannot be measured directly. They are minimized through rigid quality controls in the data collection process and through a careful review of all reported data for consistency and reasonableness.

To assist users in evaluating the reliability of the estimates in this report, the "Root Mean Square Error" is shown for selected items on the next page. The "Root Mean Square Error" is a statistical measure based on past performance and is computed using the differences between first and final estimates. The "Root Mean Square Error" for milk cow inventory estimates over the past 10 October - December quarters is 0.3 percent. This means that chances are 2 out of 3 that the final October - December estimate will not be above or below the current estimate of 9.2 million head by more than 0.3 percent. Chances are 9 out of 10 that the difference will not exceed 0.6 percent.

Reliability of October-December Milk Estimates ¹

Item	Root Mean Square Error	90% Confidence Level		Difference Between First and Latest Estimates			Quarters	
				Average	Smallest	Largest	First Above Latest	First Below Latest
				Million Pounds	Million Pounds	Million Pounds	Number	Number
Milk Production	<i>Percent</i> 0.4	<i>Percent</i> 0.7	<i>Million Pounds</i> 322	<i>Million Pounds</i> 135	<i>Million Pounds</i> 15	<i>Million Pounds</i> 265	<i>Number</i> 6	<i>Number</i> 4
All Milk Cows	<i>Percent</i> 0.3	<i>Percent</i> 0.6	<i>1,000 Head</i> 55	<i>1,000 Head</i> 16	<i>1,000 Head</i> 1	<i>1,000 Head</i> 73	<i>Number</i> 7	<i>Number</i> 3

¹ Based on records for the past 10 October-December quarters.

Information Contacts

Listed below are the commodity specialists in the Livestock Branch of the National Agricultural Statistics Service to contact for additional information.

Dan Kerestes, Chief, Livestock Branch (202) 720-3570

Livestock Section

Scott Hollis, Head, Livestock Section (202) 690-2424
 Bruce Boess - Hogs and Pigs (202) 720-3106
 Jim Collom - Dairy Products (202) 690-3236
 Joe Gaynor - Dairy Products Prices (202) 690-2168
 Jason Hardegree - Milk Production and Milk Cows (202) 720-3278
 Benita Hodge - Livestock Slaughter (515) 284-4340
 Scott Hollis - Sheep and Goats (202) 690-2424
 Mike Miller - Cattle, Cattle on Feed (202) 720-3040

ACCESS TO REPORTS!!

For your convenience, there are several ways to obtain NASS reports, data products, and services:

INTERNET ACCESS

All NASS reports are available free of charge on the worldwide Internet. For access, connect to the Internet and go to the NASS Home Page at: www.nass.usda.gov.

E-MAIL SUBSCRIPTION

All NASS reports are available by subscription free of charge direct to your e-mail address. Starting with the NASS Home Page at www.nass.usda.gov, under the right navigation, *Receive reports by Email*, click on **National** or **State**. Follow the instructions on the screen.

PRINTED REPORTS OR DATA PRODUCTS

CALL OUR TOLL-FREE ORDER DESK: 800-999-6779 (U.S. and Canada)
Other areas, please call 703-605-6220 FAX: 703-605-6900
(Visa, MasterCard, check, or money order acceptable for payment.)

ASSISTANCE

For **assistance** with general agricultural statistics or further information about NASS or its products or services, contact the **Agricultural Statistics Hotline** at **800-727-9540**, 7:30 a.m. to 4:00 p.m. ET, or e-mail: nass@nass.usda.gov.

The U.S. Department of Agriculture (USDA) prohibits discrimination in all its programs and activities on the basis of race, color, national origin, age, disability, and where applicable, sex, marital status, familial status, parental status, religion, sexual orientation, genetic information, political beliefs, reprisal, or because all or a part of an individual's income is derived from any public assistance program. (Not all prohibited bases apply to all programs.) Persons with disabilities who require alternative means for communication of program information (Braille, large print, audiotape, etc.) should contact USDA's TARGET Center at (202) 720-2600 (voice and TDD).

To file a complaint of discrimination, write to USDA, Director, Office of Civil Rights, 1400 Independence Avenue, S.W., Washington, D.C. 20250-9410, or call (800) 795-3272 (voice) or (202) 720-6382 (TDD). USDA is an equal opportunity provider and employer.