

# Milk Production

Released April 18, 2008, by the National Agricultural Statistics Service (NASS), Agricultural Statistics Board, U.S. Department of Agriculture. For information on *Milk Production* call Jason Hardegee at 202-720-3278, office hours 7:30 a.m. to 4:00 p.m. ET.

## March Milk Production up 2.4 Percent

**Milk production** in the 23 major States during March totaled 15.1 billion pounds, up 2.4 percent from March 2007. February revised production at 13.9 billion pounds, was up 6.2 percent from February 2007. The February revision represented an increase of 23 million pounds or 0.2 percent from last month's preliminary production estimate.

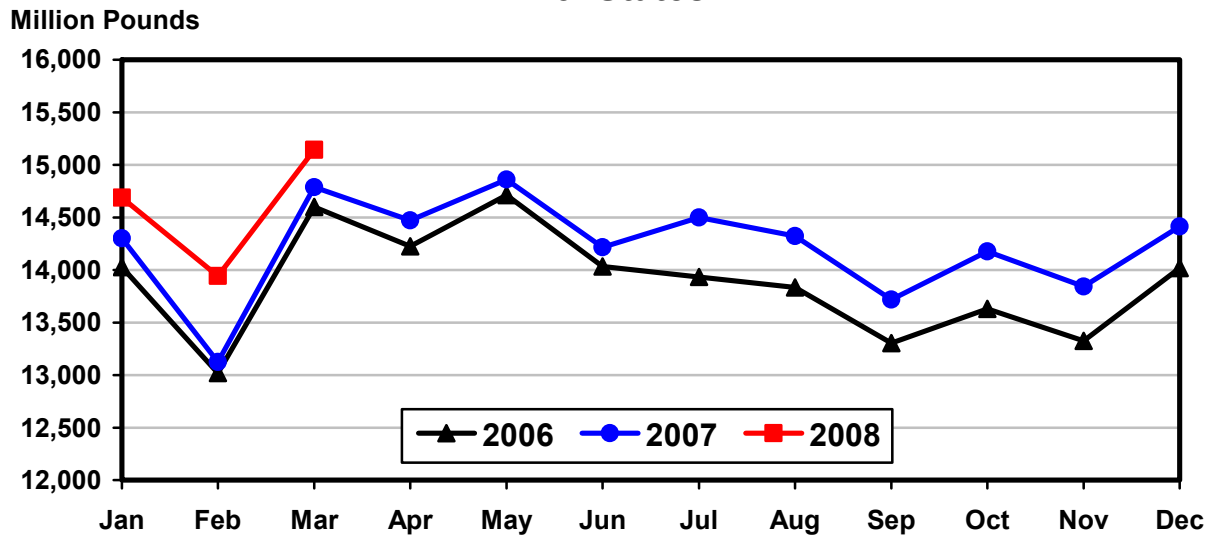
**Production per cow** in the 23 major States averaged 1,795 pounds for March, 12 pounds above March 2007.

**The number of milk cows** on farms in the 23 major States was 8.44 million head, 141,000 head more than March 2007, and 9,000 head more than February 2008.

## January - March Milk Production up 3.2 Percent

Milk production in the U.S. during the January - March quarter totaled 47.6 billion pounds, up 3.2 percent from the January - March quarter last year. The average number of milk cows in the U.S. during the quarter was 9.25 million head, 112,000 head more than the same period last year.

## Monthly Milk Production 23 States



**Milk Cows and Production: By Quarter, United States, 2007-2008<sup>1</sup>**

Quarter	Milk Cows <sup>2</sup>		Milk Per Cow <sup>3</sup>		Milk Production <sup>3</sup>		
	2007	2008	2007	2008	2007	2008	Change From 2007
	<i>1,000 Head</i>	<i>1,000 Head</i>	<i>Pounds</i>	<i>Pounds</i>	<i>Million Pounds</i>	<i>Million Pounds</i>	<i>Percent</i>
Jan-Mar	9,138	9,250	5,040	5,141	46,058	47,552	3.2
Apr-Jun	9,138		5,189		47,419		
Jul-Sep	9,159		5,034		46,110		
Oct-Dec	9,198		5,003		46,015		
Annual	9,158		20,267		185,602		

<sup>1</sup> May not add due to rounding.

<sup>2</sup> Includes dry cows, excludes heifers not yet fresh.

<sup>3</sup> Excludes milk sucked by calves.

**Milk Cows and Production: By Month, 23 Selected States, 2007-2008<sup>1</sup>**

Month	Milk Cows <sup>2</sup>		Milk Per Cow <sup>3</sup>		Milk Production <sup>3</sup>		
	2007	2008	2007	2008	2007	2008	Change from 2007
	<i>1,000 Head</i>	<i>1,000 Head</i>	<i>Pounds</i>	<i>Pounds</i>	<i>Million Pounds</i>	<i>Million Pounds</i>	<i>Percent</i>
Jan	8,284	8,413	1,726	1,746	14,302	14,688	2.7
Feb	8,286	8,427	1,584	1,654	13,125	13,942	6.2
Mar	8,295	8,436	1,783	1,795	14,787	15,144	2.4
Apr	8,292		1,745		14,470		
May	8,298		1,791		14,860		
Jun	8,302		1,712		14,216		
Jul	8,322		1,742		14,500		
Aug	8,330		1,719		14,323		
Sep	8,341		1,645		13,718		
Oct	8,355		1,697		14,176		
Nov	8,369		1,654		13,843		
Dec	8,389		1,718		14,414		
Annual	8,322		20,516		170,734		

<sup>1</sup> 2008 previous month revised.

<sup>2</sup> Includes dry cows, excludes heifers not yet fresh.

<sup>3</sup> Excludes milk sucked by calves.

**Estimated Milk Cows and Production: By Month, United States, 2007-2008<sup>1</sup>**

Month	Milk Cows <sup>2</sup>		Milk Per Cow <sup>3</sup>		Milk Production <sup>3</sup>		
	2007	2008	2007	2008	2007	2008	Change From 2007
	<i>1,000 Head</i>	<i>1,000 Head</i>	<i>Pounds</i>	<i>Pounds</i>	<i>Million Pounds</i>	<i>Million Pounds</i>	<i>Percent</i>
Jan	9,135	9,240	1,708	1,726	15,605	15,945	2.2
Feb	9,136	9,252	1,567	1,637	14,321	15,145	5.8
Mar	9,142	9,259	1,765	1,778	16,132	16,462	2.0
Apr	9,132		1,726		15,763		
May	9,138		1,771		16,180		
Jun	9,144		1,692		15,476		
Jul	9,153		1,717		15,714		
Aug	9,159		1,695		15,525		
Sep	9,166		1,622		14,871		
Oct	9,181		1,674		15,370		
Nov	9,196		1,633		15,013		
Dec	9,217		1,696		15,632		
Annual	9,158		20,267		185,602		

<sup>1</sup> 2008 revised.

<sup>2</sup> Includes dry cows, excludes heifers not yet fresh.

<sup>3</sup> Excludes milk sucked by calves.

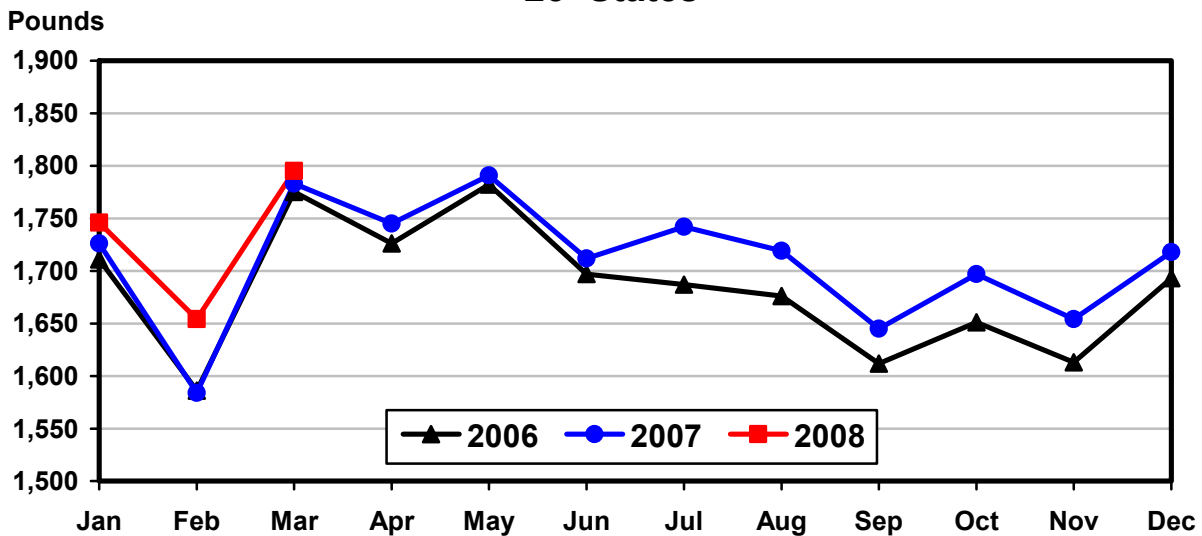
**Milk Cows and Production: By State, March 2007-2008**

State	Milk Cows <sup>1</sup>		Milk Per Cow <sup>2</sup>		Milk Production <sup>2</sup>		
	2007	2008	2007	2008	2007	2008	Change From 2007
	<i>1,000 Head</i>	<i>1,000 Head</i>	<i>Pounds</i>	<i>Pounds</i>	<i>Million Pounds</i>	<i>Million Pounds</i>	<i>Percent</i>
AZ	179	186	2,195	2,190	393	407	3.6
CA	1,799	1,846	1,975	1,970	3,553	3,637	2.4
CO	115	126	1,910	1,945	220	245	11.4
FL	130	123	1,610	1,650	209	203	-2.9
ID	504	540	1,880	1,900	948	1,026	8.2
IL	103	102	1,655	1,640	170	167	-1.8
IN	167	167	1,770	1,730	296	289	-2.4
IA	211	216	1,750	1,730	369	374	1.4
KS	110	109	1,720	1,835	189	200	5.8
KY	93	91	1,260	1,260	117	115	-1.7
MI	329	344	1,955	1,860	643	640	-0.5
MN	455	463	1,650	1,625	751	752	0.1
MO	115	110	1,370	1,300	158	143	-9.5
NM	349	340	1,790	1,990	625	677	8.3
NY	628	626	1,630	1,680	1,024	1,052	2.7
OH	275	280	1,560	1,550	429	434	1.2
OR	115	114	1,750	1,595	201	182	-9.5
PA	550	549	1,710	1,680	941	922	-2.0
TX	347	370	1,920	1,980	666	733	10.1
VT	140	140	1,535	1,590	215	223	3.7
VA	100	98	1,570	1,610	157	158	0.6
WA	235	245	2,000	1,990	470	488	3.8
WI	1,246	1,251	1,640	1,660	2,043	2,077	1.7
23-State Total	8,295	8,436	1,783	1,795	14,787	15,144	2.4

<sup>1</sup> Includes dry cows, excludes heifers not yet fresh.

<sup>2</sup> Excludes milk sucked by calves.

**Monthly Milk per Cow  
23 States**



**Milk Cows and Production: By State, February 2007-2008<sup>1</sup>**

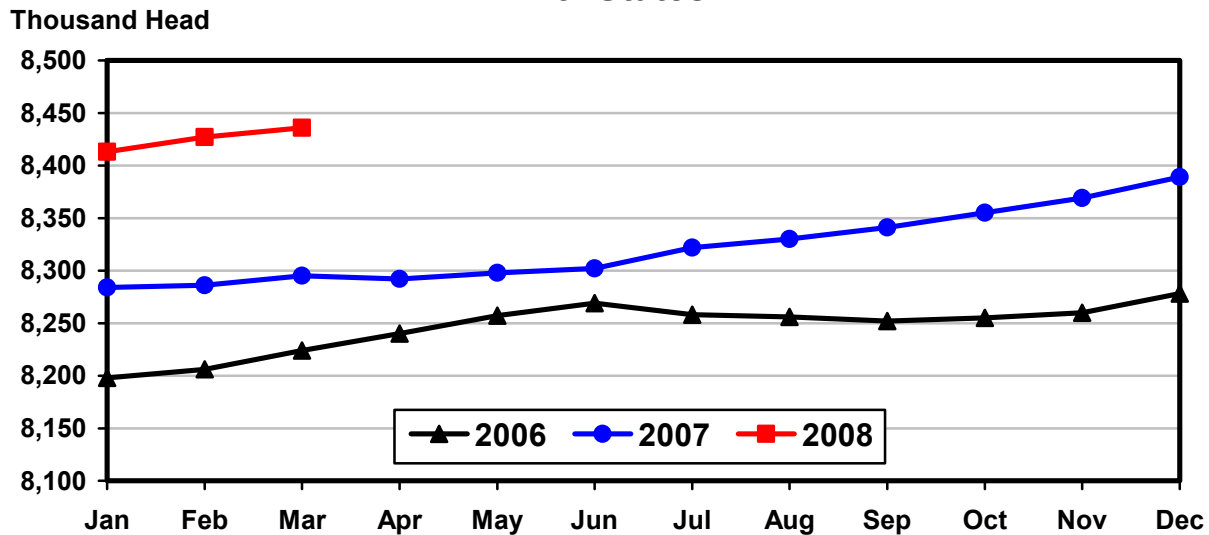
State	Milk Cows <sup>2</sup>		Milk per Cow <sup>3</sup>		Milk Production <sup>3</sup>		Change From 2007
	2007	2008	2007	2008	2007	2008	
	<i>1,000 Head</i>	<i>1,000 Head</i>	<i>Pounds</i>	<i>Pounds</i>	<i>Million Pounds</i>	<i>Million Pounds</i>	<i>Percent</i>
AZ	175	185	1,930	1,960	338	363	7.4
CA	1,795	1,843	1,755	1,805	3,150	3,327	5.6
CO	115	125	1,670	1,815	192	227	18.2
FL	130	124	1,415	1,485	184	184	
ID	504	537	1,680	1,750	847	940	11.0
IL	103	102	1,460	1,515	150	155	3.3
IN	165	167	1,580	1,600	261	267	2.3
IA	211	216	1,620	1,600	342	346	1.2
KS	110	109	1,510	1,660	166	181	9.0
KY	93	91	1,100	1,130	102	103	1.0
MI	328	344	1,750	1,760	574	605	5.4
MN	455	463	1,485	1,520	676	704	4.1
MO	115	110	1,180	1,170	136	129	-5.1
NM	353	339	1,535	1,790	542	607	12.0
NY	628	626	1,480	1,590	929	995	7.1
OH	275	279	1,380	1,440	380	402	5.8
OR	115	114	1,590	1,475	183	168	-8.2
PA	548	551	1,500	1,540	822	849	3.3
TX	347	370	1,640	1,785	569	660	16.0
VT	140	140	1,385	1,500	194	210	8.2
VA	100	98	1,380	1,470	138	144	4.3
WA	235	244	1,780	1,850	418	451	7.9
WI	1,246	1,250	1,470	1,540	1,832	1,925	5.1
23-State Total	8,286	8,427	1,584	1,654	13,125	13,942	6.2

<sup>1</sup> 2008 revised.

<sup>2</sup> Includes dry cows, excludes heifers not yet fresh.

<sup>3</sup> Excludes milk sucked by calves.

**Monthly Milk Cows  
23 States**



**Milk Cows and Production: By State and United States,  
Revised October-December, 2006-2007**

State	Oct-Dec Milk Cows <sup>1</sup>		Oct-Dec Milk Production <sup>2</sup>		Change From 2006
	2006	2007	2006	2007	
	<i>1,000 Head</i>	<i>1,000 Head</i>	<i>Million Pounds</i>	<i>Million Pounds</i>	<i>Percent</i>
AL	13.0	13.0	47	45	-4.3
AK	0.7	0.6	2.2	1.8	-18.2
AZ	175	185	942	1,035	9.9
AR	19.0	17.0	60	50	-16.7
CA	1,782	1,830	9,660	10,186	5.4
CO	113	120	644	696	8.1
CT	19.0	19.0	89	88	-1.1
DE	7.0	6.5	28.0	27.0	-3.6
FL	130	125	496	459	-7.5
GA	75	77	330	318	-3.6
HI	4.0	2.5	12.7	6.3	-50.4
ID	498	526	2,739	2,922	6.7
IL	103	103	483	467	-3.3
IN	166	166	809	837	3.5
IA	209	215	1,033	1,050	1.6
KS	112	108	570	535	-6.1
KY	95	88	310	297	-4.2
LA	30	27	86	76	-11.6
ME	32	33	141	147	4.3
MD	61	57	264	255	-3.4
MA	15.5	14.5	65	62	-4.6
MI	323	343	1,798	1,912	6.3
MN	452	463	2,078	2,135	2.7
MS	22	21	78	72	-7.7
MO	115	109	437	393	-10.1
MT	18.0	17.0	85	80	-5.9
NE	61	57	277	261	-5.8
NV	27	27	138	138	
NH	14.5	14.0	69	72	4.3
NJ	10.5	10.0	41	41	
NM	360	338	1,797	1,844	2.6
NY	628	626	2,917	3,020	3.5
NC	49	48	220	221	0.5
ND	31	28	115	106	-7.8
OH	274	277	1,197	1,220	1.9
OK	70	67	290	271	-6.6
OR	117	115	533	521	-2.3
PA	550	550	2,630	2,647	0.6
RI	1.1	1.1	4.6	4.5	-2.2
SC	17.0	18.0	66	75	13.6
SD	81	86	379	413	9.0
TN	66	61	248	233	-6.0
TX	343	352	1,745	1,875	7.4
UT	86	85	433	435	0.5
VT	140	140	623	632	1.4
VA	101	100	426	429	0.7
WA	235	243	1,322	1,387	4.9
WV	13.0	13.0	50	49	-2.0
WI	1,245	1,249	5,782	5,934	2.6
WY	6.9	7.0	29.7	34.7	16.8
US <sup>3</sup>	9,116	9,198	44,619	46,015	3.1

<sup>1</sup> Includes dry cows, excludes heifers not yet fresh.

<sup>2</sup> Excludes milk sucked by calves.

<sup>3</sup> May not add due to rounding.

**Milk Cows and Production: By State and United States,  
Preliminary January-March, 2007-2008**

State	Jan-Mar Milk Cows <sup>1</sup>		Jan-Mar Milk Production <sup>2</sup>		Change From 2007
	2007	2008	2007	2008	
	<i>1,000 Head</i>	<i>1,000 Head</i>	<i>Million Pounds</i>	<i>Million Pounds</i>	<i>Percent</i>
AL	13.0	12.0	58	53	-8.6
AK	0.6	0.6	2.3	2.1	-8.7
AZ	176	185	1,086	1,144	5.3
AR	18.0	16.5	61	55	-9.8
CA	1,795	1,843	10,072	10,458	3.8
CO	115	124	625	709	13.4
CT	19.0	19.0	94	94	
DE	7.0	6.5	30.0	30.0	
FL	130	124	584	573	-1.9
GA	77	77	381	363	-4.7
HI	3.6	2.0	12.1	4.5	-62.8
ID	503	537	2,724	2,965	8.8
IL	103	102	489	488	-0.2
IN	166	167	841	842	0.1
IA	211	216	1,074	1,083	0.8
KS	110	109	539	566	5.0
KY	93	91	332	325	-2.1
LA	30	27	105	96	-8.6
ME	32	33	141	147	4.3
MD	60	56	276	269	-2.5
MA	15.0	14.5	65	65	
MI	328	344	1,855	1,902	2.5
MN	455	463	2,171	2,201	1.4
MS	22	21	94	86	-8.5
MO	115	110	444	407	-8.3
MT	18.0	17.0	84	76	-9.5
NE	60	58	279	269	-3.6
NV	27	27	139	143	2.9
NH	14.5	14.5	72	75	4.2
NJ	10.5	10.0	43	44	2.3
NM	353	340	1,770	1,923	8.6
NY	628	626	2,964	3,086	4.1
NC	48	48	242	238	-1.7
ND	31	28	114	108	-5.3
OH	275	279	1,230	1,264	2.8
OK	70	66	296	277	-6.4
OR	115	114	576	527	-8.5
PA	549	551	2,663	2,671	0.3
RI	1.1	1.1	4.4	4.8	9.1
SC	18.0	18.0	87	85	-2.3
SD	84	87	401	426	6.2
TN	66	61	270	256	-5.2
TX	347	368	1,853	2,070	11.7
UT	85	85	414	430	3.9
VT	140	140	627	655	4.5
VA	100	98	449	453	0.9
WA	235	244	1,342	1,416	5.5
WV	13.0	12.0	50	46	-8.0
WI	1,246	1,250	5,904	6,046	2.4
WY	7.1	7.0	29.1	35.3	21.3
US <sup>3</sup>	9,138	9,250	46,058	47,552	3.2

<sup>1</sup> Includes dry cows, excludes heifers not yet fresh.

<sup>2</sup> Excludes milk sucked by calves.

<sup>3</sup> May not add due to rounding.

## Reliability Statement

**Survey Procedures:** Primary data used to determine these estimates were obtained from a sample of producers. Individual States maintain a list of all known milk producers and information on the size of their herd. States use all known sources of producers to ensure that their lists are as complete as possible. Generally, all large producers and a sample of small producers are included in the survey. Questionnaires are mailed to producers near the end of the month to obtain data for the first day of the month. Additional reports are obtained by telephone, as needed, to supplement the mail response. Where feasible, States utilize state and federal administrative data, rather than conduct a monthly or quarterly survey, to estimate milk production. This eliminates duplication of data gathering by different government agencies. Indications of milk cow inventory are also obtained in the January and July Cattle Surveys.

**Estimation Procedures:** State offices prepare these estimates by using a combination of survey indications, historic trends, and any available administrative data. Individual State estimates are reviewed by the Agricultural Statistics Board for reasonableness.

**Revision Policy:** Milk production, rate per cow, and number of cows are subject to revision the following month for monthly States or the following quarter for the quarterly States. Normally, Federal Market Order sales are the main basis for revisions. However, data for all orders are not available in time for this revision. Estimates are again subject to revisions in February each year based on additional administrative data. In the event that additional changes are necessary, a third revision is possible in February the following year. Estimates are again reviewed after data from the five-year Census of Agriculture are available. No revisions are made after that date.

**Reliability:** Since all operations with dairy animals are not included in the sample, survey estimates are subject to sampling variability. Survey results are also subject to non-sampling errors such as omissions, duplications, and mistakes in reporting, recording, and processing the data. The effects of these errors cannot be measured directly. They are minimized through rigid quality controls in the data collection process and through a careful review of all reported data for consistency and reasonableness.

To assist users in evaluating the reliability of the estimates in this report, the "Root Mean Square Error" is shown for selected items on the next page. The "Root Mean Square Error" is a statistical measure based on past performance and is computed using the differences between first and final estimates. The "Root Mean Square Error" for milk cow inventory estimates over the past 10 January - March quarters is 0.1 percent. This means that chances are 2 out of 3 that the final January - March estimate will not be above or below the current estimate of 9.25 million head by more than 0.1 percent. Chances are 9 out of 10 that the difference will not exceed 0.2 percent.

**Reliability of January-March Milk Estimates <sup>1</sup>**

Item	Root Mean Square Error	90% Confidence Level		Difference Between First and Latest Estimates			Quarters	
				Average	Smallest	Largest	First Above Latest	First Below Latest
				Million Pounds	Million Pounds	Million Pounds	Number	Number
Milk Production	<i>Percent</i> 0.4	<i>Percent</i> 0.7	<i>Million Pounds</i> 333	<i>Million Pounds</i> 122	<i>Million Pounds</i> 10	<i>Million Pounds</i> 375	<i>Number</i> 4	<i>Number</i> 6
All Milk Cows	<i>Percent</i> 0.1	<i>Percent</i> 0.2	<i>1,000 Head</i> 19	<i>1,000 Head</i> 9	<i>1,000 Head</i> 2	<i>1,000 Head</i> 22	<i>Number</i> 6	<i>Number</i> 4

<sup>1</sup> Based on records for the past 10 January-March quarters.

**Information Contacts**

Listed below are the commodity specialists in the Livestock Branch of the National Agricultural Statistics Service to contact for additional information.

Dan Kerestes, Chief, Livestock Branch ..... (202) 720-3570

**Livestock Section**

Scott Hollis, Head, Livestock Section ..... (202) 690-2424  
 Nicholas Streff - Hogs and Pigs ..... (202) 720-3106  
 Jim Collom - Dairy Products ..... (202) 690-3236  
 Joe Gaynor - Dairy Products Prices ..... (202) 690-2168  
 Jason Hardegee - Milk Production and Milk Cows ..... (202) 720-3278  
 Benita Hodge - Livestock Slaughter ..... (515) 284-4340  
 Scott Hollis - Sheep and Goats ..... (202) 690-2424  
 Mike Miller - Cattle, Cattle on Feed ..... (202) 720-3040



## ACCESS TO REPORTS!!

---

For your convenience, there are several ways to obtain NASS reports, data products, and services:

### INTERNET ACCESS

All NASS reports are available free of charge on the worldwide Internet. For access, connect to the Internet and go to the NASS Home Page at: [www.nass.usda.gov](http://www.nass.usda.gov).

### E-MAIL SUBSCRIPTION

All NASS reports are available by subscription free of charge direct to your e-mail address. Starting with the NASS Home Page at [www.nass.usda.gov](http://www.nass.usda.gov), under the right navigation, *Receive reports by Email*, click on **National** or **State**. Follow the instructions on the screen.

-----

### PRINTED REPORTS OR DATA PRODUCTS

**CALL OUR TOLL-FREE ORDER DESK: 800-999-6779 (U.S. and Canada)**  
**Other areas, please call 703-605-6220      FAX: 703-605-6900**  
**(Visa, MasterCard, check, or money order acceptable for payment.)**

-----

### ASSISTANCE

For **assistance** with general agricultural statistics or further information about NASS or its products or services, contact the **Agricultural Statistics Hotline** at **800-727-9540**, 7:30 a.m. to 4:00 p.m. ET, or e-mail: [nass@nass.usda.gov](mailto:nass@nass.usda.gov).

The U.S. Department of Agriculture (USDA) prohibits discrimination in all its programs and activities on the basis of race, color, national origin, age, disability, and where applicable, sex, marital status, familial status, parental status, religion, sexual orientation, genetic information, political beliefs, reprisal, or because all or a part of an individual's income is derived from any public assistance program. (Not all prohibited bases apply to all programs.) Persons with disabilities who require alternative means for communication of program information (Braille, large print, audiotape, etc.) should contact USDA's TARGET Center at (202) 720-2600 (voice and TDD).

To file a complaint of discrimination, write to USDA, Director, Office of Civil Rights, 1400 Independence Avenue, S.W., Washington, D.C. 20250-9410, or call (800) 795-3272 (voice) or (202) 720-6382 (TDD). USDA is an equal opportunity provider and employer.