

# Milk Production

Released May 19, 2008, by the National Agricultural Statistics Service (NASS), Agricultural Statistics Board, U.S. Department of Agriculture. For information on *Milk Production* call Mike Miller at 202-720-3278, office hours 7:30 a.m. to 4:00 p.m. ET.

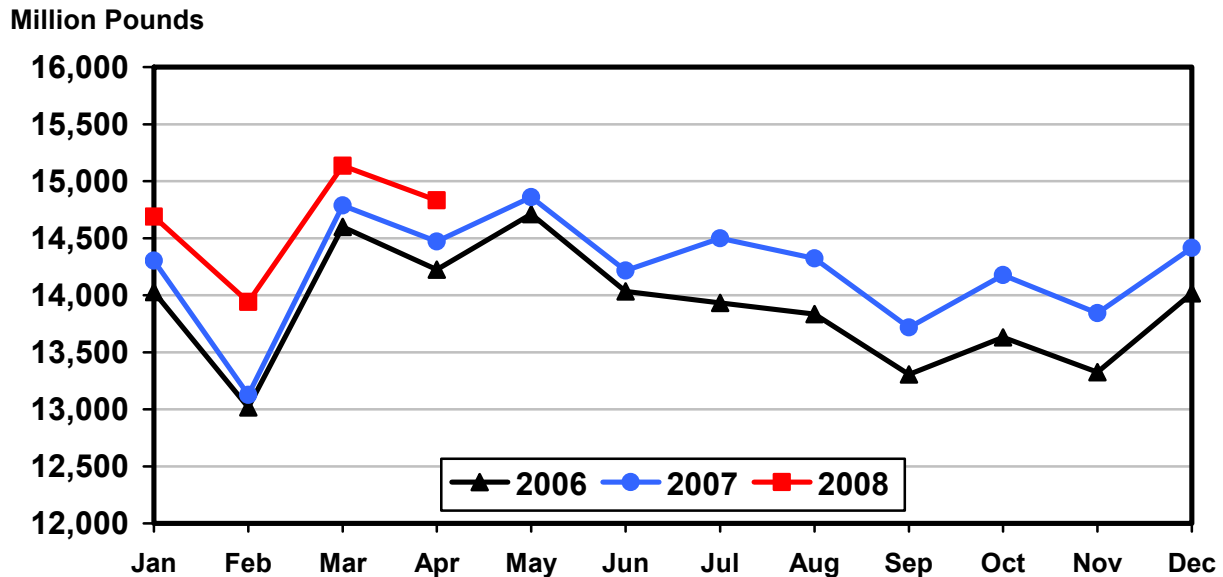
## April Milk Production up 2.5 Percent

**Milk production** in the 23 major States during April totaled 14.8 billion pounds, up 2.5 percent from April 2007. March revised production at 15.1 billion pounds, was up 2.3 percent from March 2007. The March revision represented a decrease of 10 million pounds or 0.1 percent from last month's preliminary production estimate.

**Production per cow** in the 23 major States averaged 1,757 pounds for April, 12 pounds above April 2007.

**The number of milk cows** on farms in the 23 major States was 8.44 million head, 152,000 head more than April 2007, and 8,000 head more than March 2008.

## Monthly Milk Production 23 States



**Milk Cows and Production: By Quarter, United States, 2007-2008 <sup>1</sup>**

Quarter	Milk Cows <sup>2</sup>		Milk Per Cow <sup>3</sup>		Milk Production <sup>3</sup>		
	2007	2008	2007	2008	2007	2008	Change From 2007
	<i>1,000 Head</i>	<i>1,000 Head</i>	<i>Pounds</i>	<i>Pounds</i>	<i>Million Pounds</i>	<i>Million Pounds</i>	<i>Percent</i>
Jan-Mar	9,138	9,250	5,040	5,140	46,058	47,542	3.2
Apr-Jun	9,138		5,189		47,419		
Jul-Sep	9,159		5,034		46,110		
Oct-Dec	9,198		5,003		46,015		
Annual	9,158		20,267		185,602		

<sup>1</sup> May not add due to rounding.

<sup>2</sup> Includes dry cows, excludes heifers not yet fresh.

<sup>3</sup> Excludes milk sucked by calves.

**Milk Cows and Production: By Month, 23 Selected States, 2007-2008 <sup>1</sup>**

Month	Milk Cows <sup>2</sup>		Milk Per Cow <sup>3</sup>		Milk Production <sup>3</sup>		
	2007	2008	2007	2008	2007	2008	Change from 2007
	<i>1,000 Head</i>	<i>1,000 Head</i>	<i>Pounds</i>	<i>Pounds</i>	<i>Million Pounds</i>	<i>Million Pounds</i>	<i>Percent</i>
Jan	8,284	8,413	1,726	1,746	14,302	14,688	2.7
Feb	8,286	8,427	1,584	1,654	13,125	13,942	6.2
Mar	8,295	8,436	1,783	1,794	14,787	15,134	2.3
Apr	8,292	8,444	1,745	1,757	14,470	14,833	2.5
May	8,298		1,791		14,860		
Jun	8,302		1,712		14,216		
Jul	8,322		1,742		14,500		
Aug	8,330		1,719		14,323		
Sep	8,341		1,645		13,718		
Oct	8,355		1,697		14,176		
Nov	8,369		1,654		13,843		
Dec	8,389		1,718		14,414		
Annual	8,322		20,516		170,734		

<sup>1</sup> 2008 previous month revised.

<sup>2</sup> Includes dry cows, excludes heifers not yet fresh.

<sup>3</sup> Excludes milk sucked by calves.

**Estimated Milk Cows and Production: By Month, United States, 2007-2008 <sup>1</sup>**

Month	Milk Cows <sup>2</sup>		Milk Per Cow <sup>3</sup>		Milk Production <sup>3</sup>		
	2007	2008	2007	2008	2007	2008	Change From 2007
	<i>1,000 Head</i>	<i>1,000 Head</i>	<i>Pounds</i>	<i>Pounds</i>	<i>Million Pounds</i>	<i>Million Pounds</i>	<i>Percent</i>
Jan	9,135	9,240	1,708	1,726	15,605	15,945	2.2
Feb	9,136	9,252	1,567	1,637	14,321	15,145	5.8
Mar	9,142	9,259	1,765	1,777	16,132	16,452	2.0
Apr	9,132	9,266	1,726	1,738	15,763	16,107	2.2
May	9,138		1,771		16,180		
Jun	9,144		1,692		15,476		
Jul	9,153		1,717		15,714		
Aug	9,159		1,695		15,525		
Sep	9,166		1,622		14,871		
Oct	9,181		1,674		15,370		
Nov	9,196		1,633		15,013		
Dec	9,217		1,696		15,632		
Annual	9,158		20,267		185,602		

<sup>1</sup> 2008 revised.

<sup>2</sup> Includes dry cows, excludes heifers not yet fresh.

<sup>3</sup> Excludes milk sucked by calves.

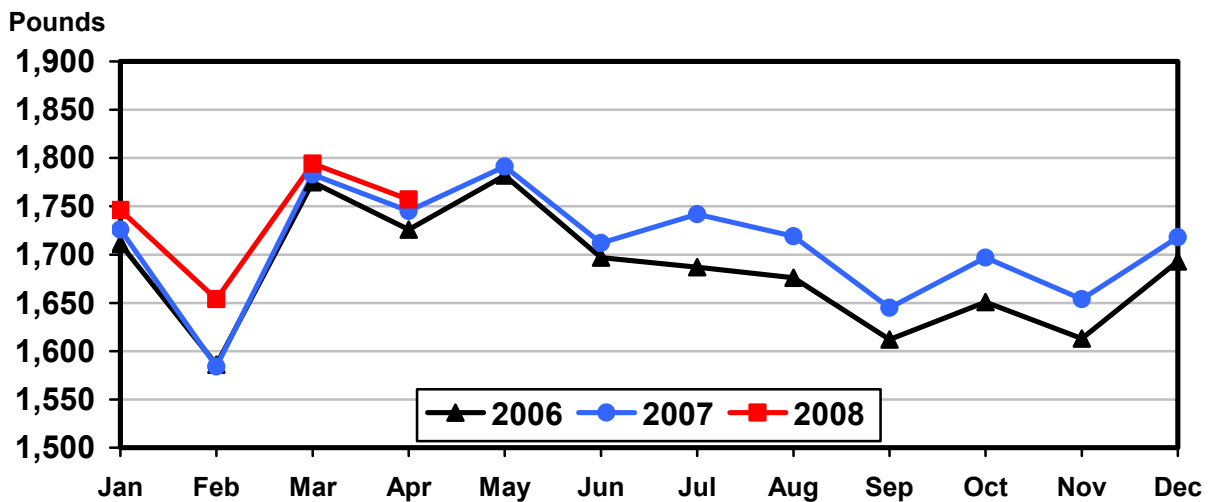
**Milk Cows and Production: By State, April 2007-2008**

State	Milk Cows <sup>1</sup>		Milk Per Cow <sup>2</sup>		Milk Production <sup>2</sup>		
	2007	2008	2007	2008	2007	2008	Change From 2007
	<i>1,000 Head</i>	<i>1,000 Head</i>	<i>Pounds</i>	<i>Pounds</i>	<i>Million Pounds</i>	<i>Million Pounds</i>	<i>Percent</i>
AZ	182	186	2,090	2,140	380	398	4.7
CA	1,801	1,848	1,915	1,900	3,449	3,511	1.8
CO	115	127	1,900	1,910	219	243	11.0
FL	129	123	1,580	1,575	204	194	-4.9
ID	503	540	1,860	1,840	936	994	6.2
IL	103	102	1,645	1,615	169	165	-2.4
IN	168	168	1,725	1,690	290	284	-2.1
IA	211	216	1,710	1,670	361	361	
KS	110	110	1,680	1,820	185	200	8.1
KY	92	92	1,270	1,230	117	113	-3.4
MI	331	345	1,915	1,825	634	630	-0.6
MN	455	463	1,610	1,570	733	727	-0.8
MO	114	111	1,395	1,325	159	147	-7.5
NM	345	342	1,740	1,990	600	681	13.5
NY	627	626	1,605	1,670	1,006	1,045	3.9
OH	275	280	1,550	1,540	426	431	1.2
OR	115	113	1,670	1,565	192	177	-7.8
PA	550	549	1,690	1,670	930	917	-1.4
TX	347	370	1,860	1,965	645	727	12.7
VT	140	140	1,495	1,560	209	218	4.3
VA	100	98	1,550	1,580	155	155	
WA	233	244	1,970	1,950	459	476	3.7
WI	1,246	1,251	1,615	1,630	2,012	2,039	1.3
23-State Total	8,292	8,444	1,745	1,757	14,470	14,833	2.5

<sup>1</sup> Includes dry cows, excludes heifers not yet fresh.

<sup>2</sup> Excludes milk sucked by calves.

## Monthly Milk per Cow 23 States



**Milk Cows and Production: By State, March 2007-2008 <sup>1</sup>**

State	Milk Cows <sup>2</sup>		Milk per Cow <sup>3</sup>		Milk Production <sup>3</sup>		
	2007	2008	2007	2008	2007	2008	Change From 2007
	<i>1,000 Head</i>	<i>1,000 Head</i>	<i>Pounds</i>	<i>Pounds</i>	<i>Million Pounds</i>	<i>Million Pounds</i>	<i>Percent</i>
AZ	179	186	2,195	2,190	393	407	3.6
CA	1,799	1,846	1,975	1,970	3,553	3,637	2.4
CO	115	126	1,910	1,945	220	245	11.4
FL	130	123	1,610	1,620	209	199	-4.8
ID	504	540	1,880	1,885	948	1,018	7.4
IL	103	102	1,655	1,640	170	167	-1.8
IN	167	167	1,770	1,730	296	289	-2.4
IA	211	216	1,750	1,730	369	374	1.4
KS	110	109	1,720	1,835	189	200	5.8
KY	93	91	1,260	1,230	117	112	-4.3
MI	329	344	1,955	1,860	643	640	-0.5
MN	455	463	1,650	1,630	751	755	0.5
MO	115	110	1,370	1,300	158	143	-9.5
NM	349	340	1,790	1,990	625	677	8.3
NY	628	626	1,630	1,690	1,024	1,058	3.3
OH	275	280	1,560	1,550	429	434	1.2
OR	115	114	1,750	1,580	201	180	-10.4
PA	550	549	1,710	1,680	941	922	-2.0
TX	347	370	1,920	1,980	666	733	10.1
VT	140	140	1,535	1,590	215	223	3.7
VA	100	98	1,570	1,590	157	156	-0.6
WA	235	245	2,000	1,990	470	488	3.8
WI	1,246	1,251	1,640	1,660	2,043	2,077	1.7
23-State Total	8,295	8,436	1,783	1,794	14,787	15,134	2.3

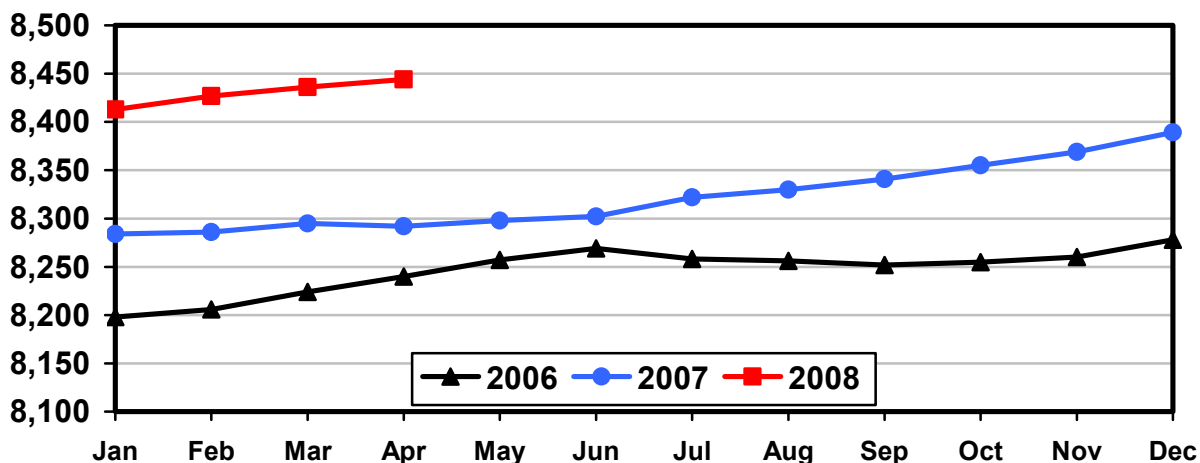
<sup>1</sup> 2008 revised.

<sup>2</sup> Includes dry cows, excludes heifers not yet fresh.

<sup>3</sup> Excludes milk sucked by calves.

## Monthly Milk Cows 23 States

Thousand Head



## Reliability Statement

**Survey Procedures:** Primary data used to determine these estimates were obtained from a sample of producers. Individual States maintain a list of all known milk producers and information on the size of their herd. States use all known sources of producers to ensure that their lists are as complete as possible. Generally, all large producers and a sample of small producers are included in the survey. Questionnaires are mailed to producers near the end of the month to obtain data for the first day of the month. Additional reports are obtained by telephone, as needed, to supplement the mail response. Where feasible, States utilize state and federal administrative data, rather than conduct a monthly or quarterly survey, to estimate milk production. This eliminates duplication of data gathering by different government agencies. Indications of milk cow inventory are also obtained in the January and July Cattle Surveys.

**Estimation Procedures:** State offices prepare these estimates by using a combination of survey indications, historic trends, and any available administrative data. Individual State estimates are reviewed by the Agricultural Statistics Board for reasonableness.

**Revision Policy:** Milk production, rate per cow, and number of cows are subject to revision the following month for monthly States or the following quarter for the quarterly States. Normally, Federal Market Order sales are the main basis for revisions. However, data for all orders are not available in time for this revision. Estimates are again subject to revisions in February each year based on additional administrative data. In the event that additional changes are necessary, a third revision is possible in February the following year. Estimates are again reviewed after data from the five-year Census of Agriculture are available. No revisions are made after that date.

**Reliability:** Since all operations with dairy animals are not included in the sample, survey estimates are subject to sampling variability. Survey results are also subject to non-sampling errors such as omissions, duplications, and mistakes in reporting, recording, and processing the data. The effects of these errors cannot be measured directly. They are minimized through rigid quality controls in the data collection process and through a careful review of all reported data for consistency and reasonableness.

To assist users in evaluating the reliability of the estimates in this report, the "Root Mean Square Error" is shown for selected items on the next page. The "Root Mean Square Error" is a statistical measure based on past performance and is computed using the differences between first and final estimates. The "Root Mean Square Error" for milk cow inventory estimates over the past 10 January - March quarters is 0.1 percent. This means that chances are 2 out of 3 that the final January - March estimate will not be above or below the current estimate of 9.25 million head by more than 0.1 percent. Chances are 9 out of 10 that the difference will not exceed 0.2 percent.

**Reliability of January-March Milk Estimates <sup>1</sup>**

Item	Root Mean Square Error	90% Confidence Level		Difference Between First and Latest Estimates			Quarters	
				Average	Smallest	Largest	First Above Latest	First Below Latest
				Million Pounds	Million Pounds	Million Pounds	Number	Number
Milk Production	<i>Percent</i> 0.4	<i>Percent</i> 0.7	<i>Million Pounds</i> 333	<i>Million Pounds</i> 122	<i>Million Pounds</i> 10	<i>Million Pounds</i> 375	<i>Number</i> 4	<i>Number</i> 6
All Milk Cows	<i>Percent</i> 0.1	<i>Percent</i> 0.2	<i>1,000 Head</i> 19	<i>1,000 Head</i> 9	<i>1,000 Head</i> 2	<i>1,000 Head</i> 22	<i>Number</i> 6	<i>Number</i> 4

<sup>1</sup> Based on records for the past 10 January-March quarters.

**Information Contacts**

Listed below are the commodity specialists in the Livestock Branch of the National Agricultural Statistics Service to contact for additional information.

Dan Kerestes, Chief, Livestock Branch ..... (202) 720-3570

**Livestock Section**

Scott Hollis, Head, Livestock Section ..... (202) 690-2424  
 Jim Collom - Dairy Products ..... (202) 690-3236  
 Joe Gaynor - Dairy Products Prices ..... (202) 690-2168  
 Jason Hardegree - Cattle, Cattle on Feed ..... (202) 720-3040  
 Benita Hodge - Livestock Slaughter ..... (515) 284-4340  
 Scott Hollis - Sheep and Goats ..... (202) 690-2424  
 Mike Miller - Milk Production and Milk Cows ..... (202) 720-3278  
 Nicholas Streff - Hogs and Pigs ..... (202) 720-3106

## ACCESS TO REPORTS!!

---

For your convenience, there are several ways to obtain NASS reports, data products, and services:

### INTERNET ACCESS

All NASS reports are available free of charge on the worldwide Internet. For access, connect to the Internet and go to the NASS Home Page at [www.nass.usda.gov](http://www.nass.usda.gov).

### E-MAIL SUBSCRIPTION

All NASS reports are available by subscription free of charge direct to your e-mail address. Starting with the NASS Home Page at [www.nass.usda.gov](http://www.nass.usda.gov), under the right navigation, *Receive reports by Email*, click on **National** or **State**. Follow the instructions on the screen.

-----

### PRINTED REPORTS OR DATA PRODUCTS

**CALL OUR TOLL-FREE ORDER DESK: 800-999-6779 (U.S. and Canada)**  
**Other areas, please call 703-605-6220      FAX: 703-605-6900**  
**(Visa, MasterCard, check, or money order acceptable for payment.)**

-----

### ASSISTANCE

For **assistance** with general agricultural statistics or further information about NASS or its products or services, contact the **Agricultural Statistics Hotline** at **800-727-9540**, 7:30 a.m. to 4:00 p.m. ET, or e-mail: [nass@nass.usda.gov](mailto:nass@nass.usda.gov).

The U.S. Department of Agriculture (USDA) prohibits discrimination in all its programs and activities on the basis of race, color, national origin, age, disability, and where applicable, sex, marital status, familial status, parental status, religion, sexual orientation, genetic information, political beliefs, reprisal, or because all or a part of an individual's income is derived from any public assistance program. (Not all prohibited bases apply to all programs.) Persons with disabilities who require alternative means for communication of program information (Braille, large print, audiotape, etc.) should contact USDA's TARGET Center at (202) 720-2600 (voice and TDD).

To file a complaint of discrimination, write to USDA, Director, Office of Civil Rights, 1400 Independence Avenue, S.W., Washington, D.C. 20250-9410, or call (800) 795-3272 (voice) or (202) 720-6382 (TDD). USDA is an equal opportunity provider and employer.