

Milk Production

Released July 18, 2008, by the National Agricultural Statistics Service (NASS), Agricultural Statistics Board, U.S. Department of Agriculture. For information on *Milk Production* call Mike Miller at 202-720-3278, office hours 7:30 a.m. to 4:00 p.m. ET.

June Milk Production up 3.4 Percent

Milk production in the 23 major States during June totaled 14.7 billion pounds, up 3.4 percent from June 2007. May revised production at 15.4 billion pounds, was up 3.5 percent from May 2007. The May revision represented an increase of 14 million pounds or 0.1 percent from last month's preliminary production estimate.

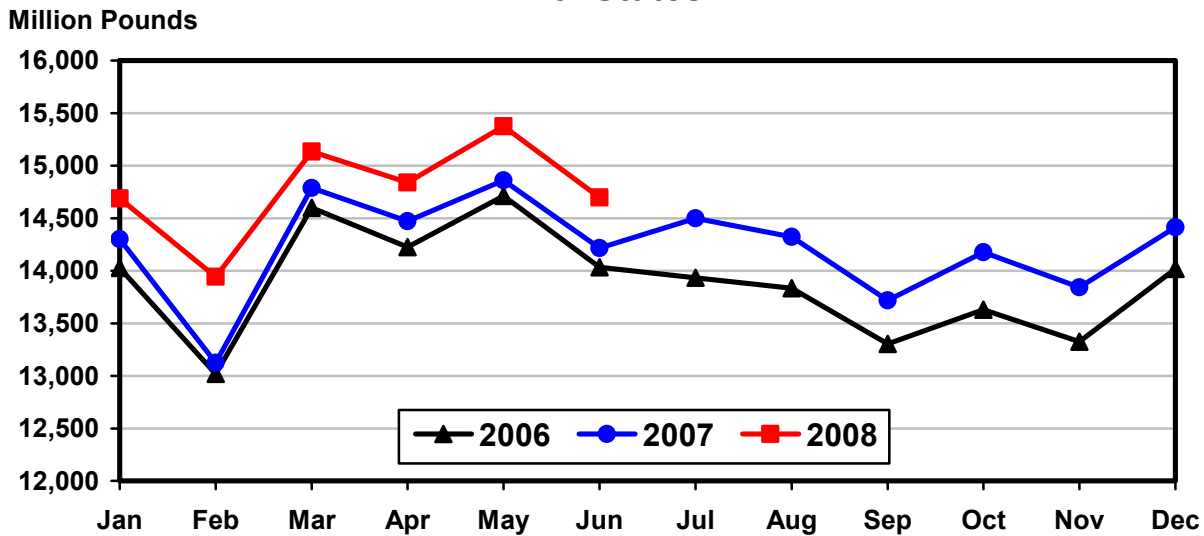
Production per cow in the 23 major States averaged 1,737 pounds for June, 25 pounds above June 2007.

The number of milk cows on farms in the 23 major States was 8.46 million head, 158,000 head more than June 2007, and 1,000 head more than May 2008.

April - June Milk Production up 2.7 Percent

Milk production in the U.S. during the April - June quarter totaled 48.7 billion pounds, up 2.7 percent from the April - June quarter last year. The average number of milk cows in the U.S. during the quarter was 9.27 million head, 136,000 head more than the same period last year.

Monthly Milk Production 23 States



Milk Cows and Production: By Quarter, United States, 2007-2008 ¹

Quarter	Milk Cows ²		Milk Per Cow ³		Milk Production ³		
	2007	2008	2007	2008	2007	2008	Change From 2007
	<i>1,000 Head</i>	<i>1,000 Head</i>	<i>Pounds</i>	<i>Pounds</i>	<i>Million Pounds</i>	<i>Million Pounds</i>	<i>Percent</i>
Jan-Mar	9,138	9,249	5,040	5,140	46,058	47,541	3.2
Apr-Jun	9,138	9,274	5,189	5,252	47,419	48,703	2.7
Jul-Sep	9,159		5,034		46,110		
Oct-Dec	9,198		5,003		46,015		
Annual	9,158		20,267		185,602		

¹ May not add due to rounding.

² Includes dry cows, excludes heifers not yet fresh.

³ Excludes milk sucked by calves.

Milk Cows and Production: By Month, 23 Selected States, 2007-2008 ¹

Month	Milk Cows ²		Milk Per Cow ³		Milk Production ³		
	2007	2008	2007	2008	2007	2008	Change from 2007
	<i>1,000 Head</i>	<i>1,000 Head</i>	<i>Pounds</i>	<i>Pounds</i>	<i>Million Pounds</i>	<i>Million Pounds</i>	<i>Percent</i>
Jan	8,284	8,413	1,726	1,746	14,302	14,688	2.7
Feb	8,286	8,427	1,584	1,654	13,125	13,942	6.2
Mar	8,295	8,436	1,783	1,794	14,787	15,134	2.3
Apr	8,292	8,448	1,745	1,757	14,470	14,839	2.6
May	8,298	8,459	1,791	1,818	14,860	15,375	3.5
Jun	8,302	8,460	1,712	1,737	14,216	14,697	3.4
Jul	8,322		1,742		14,500		
Aug	8,330		1,719		14,323		
Sep	8,341		1,645		13,718		
Oct	8,355		1,697		14,176		
Nov	8,369		1,654		13,843		
Dec	8,389		1,718		14,414		
Annual	8,322		20,516		170,734		

¹ 2008 previous month revised.

² Includes dry cows, excludes heifers not yet fresh.

³ Excludes milk sucked by calves.

Estimated Milk Cows and Production: By Month, United States, 2007-2008 ¹

Month	Milk Cows ²		Milk Per Cow ³		Milk Production ³		
	2007	2008	2007	2008	2007	2008	Change From 2007
	<i>1,000 Head</i>	<i>1,000 Head</i>	<i>Pounds</i>	<i>Pounds</i>	<i>Million Pounds</i>	<i>Million Pounds</i>	<i>Percent</i>
Jan	9,135	9,239	1,708	1,727	15,605	15,952	2.2
Feb	9,136	9,251	1,567	1,637	14,321	15,145	5.8
Mar	9,142	9,258	1,765	1,776	16,132	16,444	1.9
Apr	9,132	9,268	1,726	1,737	15,763	16,098	2.1
May	9,138	9,277	1,771	1,797	16,180	16,671	3.0
Jun	9,144	9,277	1,692	1,718	15,476	15,934	3.0
Jul	9,153		1,717		15,714		
Aug	9,159		1,695		15,525		
Sep	9,166		1,622		14,871		
Oct	9,181		1,674		15,370		
Nov	9,196		1,633		15,013		
Dec	9,217		1,696		15,632		
Annual	9,158		20,267		185,602		

¹ 2008 revised.

² Includes dry cows, excludes heifers not yet fresh.

³ Excludes milk sucked by calves.

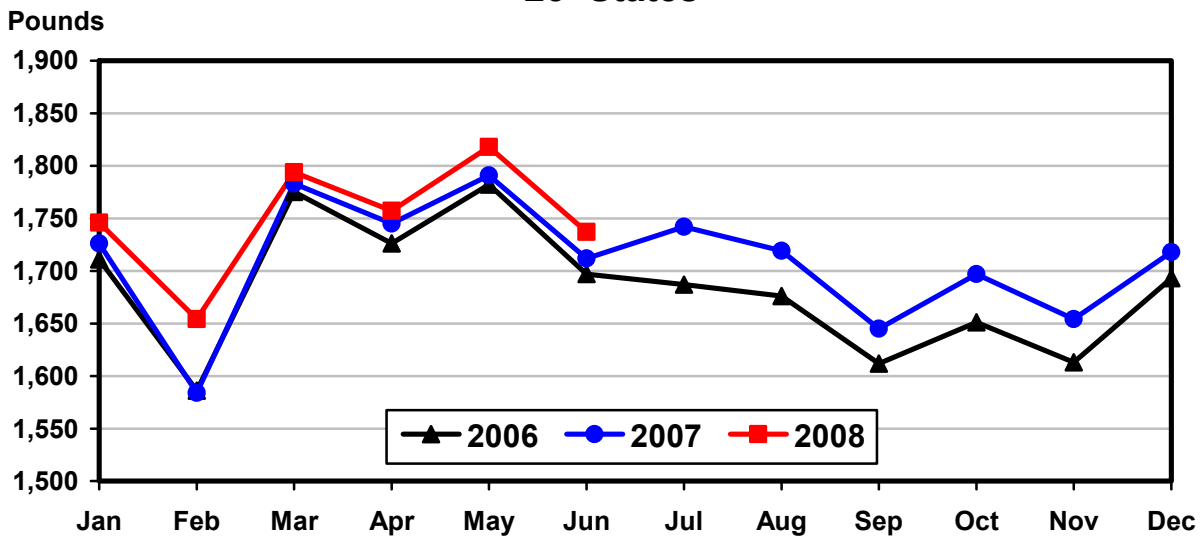
Milk Cows and Production: By State, June 2007-2008

State	Milk Cows ¹		Milk Per Cow ²		Milk Production ²		
	2007	2008	2007	2008	2007	2008	Change From 2007
	<i>1,000 Head</i>	<i>1,000 Head</i>	<i>Pounds</i>	<i>Pounds</i>	<i>Million Pounds</i>	<i>Million Pounds</i>	<i>Percent</i>
AZ	182	186	1,965	1,950	358	363	1.4
CA	1,811	1,848	1,845	1,850	3,341	3,419	2.3
CO	118	128	1,960	1,940	231	248	7.4
FL	126	122	1,465	1,490	185	182	-1.6
ID	508	550	1,910	1,910	970	1,051	8.4
IL	103	102	1,550	1,565	160	160	
IN	167	166	1,675	1,650	280	274	-2.1
IA	214	216	1,675	1,650	358	356	-0.6
KS	109	111	1,650	1,760	180	195	8.3
KY	90	92	1,170	1,110	105	102	-2.9
MI	334	348	1,905	1,840	636	640	0.6
MN	460	463	1,565	1,590	720	736	2.2
MO	112	110	1,240	1,240	139	136	-2.2
NM	335	340	1,815	1,970	608	670	10.2
NY	626	626	1,620	1,680	1,014	1,052	3.7
OH	276	282	1,550	1,580	428	446	4.2
OR	114	113	1,650	1,575	188	178	-5.3
PA	549	546	1,590	1,630	873	890	1.9
TX	348	377	1,740	1,870	606	705	16.3
VT	139	140	1,510	1,550	210	217	3.3
VA	100	98	1,440	1,450	144	142	-1.4
WA	234	244	1,975	1,975	462	482	4.3
WI	1,247	1,252	1,620	1,640	2,020	2,053	1.6
23-State Total	8,302	8,460	1,712	1,737	14,216	14,697	3.4

¹ Includes dry cows, excludes heifers not yet fresh.

² Excludes milk sucked by calves.

**Monthly Milk per Cow
23 States**



Milk Cows and Production: By State, May 2007-2008 ¹

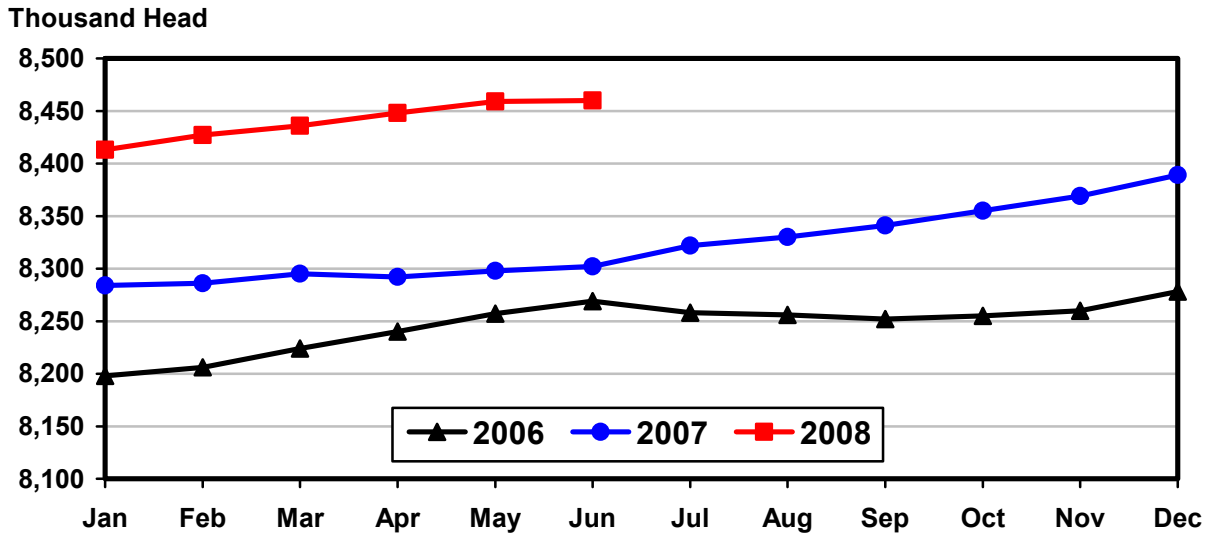
State	Milk Cows ²		Milk per Cow ³		Milk Production ³		Change From 2007
	2007	2008	2007	2008	2007	2008	
	<i>1,000 Head</i>	<i>1,000 Head</i>	<i>Pounds</i>	<i>Pounds</i>	<i>Million Pounds</i>	<i>Million Pounds</i>	<i>Percent</i>
AZ	182	186	2,105	2,165	383	403	5.2
CA	1,806	1,848	1,925	1,940	3,477	3,585	3.1
CO	116	127	1,990	1,990	231	253	9.5
FL	128	123	1,615	1,585	207	195	-5.8
ID	506	550	1,930	1,930	977	1,062	8.7
IL	103	102	1,670	1,665	172	170	-1.2
IN	167	168	1,740	1,730	291	291	
IA	212	216	1,775	1,740	376	376	
KS	109	110	1,710	1,875	186	206	10.8
KY	91	92	1,250	1,210	114	111	-2.6
MI	332	347	1,935	1,900	642	659	2.6
MN	458	463	1,660	1,645	760	762	0.3
MO	114	111	1,380	1,365	157	152	-3.2
NM	341	342	1,870	2,040	638	698	9.4
NY	626	626	1,690	1,770	1,058	1,108	4.7
OH	276	282	1,640	1,650	453	465	2.6
OR	115	113	1,710	1,610	197	182	-7.6
PA	549	548	1,720	1,720	944	943	-0.1
TX	347	372	1,870	1,995	649	742	14.3
VT	140	140	1,555	1,600	218	224	2.8
VA	100	98	1,570	1,580	157	155	-1.3
WA	233	244	2,025	2,025	472	494	4.7
WI	1,247	1,251	1,685	1,710	2,101	2,139	1.8
23-State Total	8,298	8,459	1,791	1,818	14,860	15,375	3.5

¹ 2008 revised.

² Includes dry cows, excludes heifers not yet fresh.

³ Excludes milk sucked by calves.

**Monthly Milk Cows
23 States**



**Milk Cows and Production: By State and United States,
Revised January-March, 2007-2008**

State	Jan-Mar Milk Cows ¹		Jan-Mar Milk Production ²		Change From 2007
	2007	2008	2007	2008	
	<i>1,000 Head</i>	<i>1,000 Head</i>	<i>Million Pounds</i>	<i>Million Pounds</i>	<i>Percent</i>
AL	13.0	12.0	58	53	-8.6
AK	0.6	0.6	2.3	2.1	-8.7
AZ	176	185	1,086	1,144	5.3
AR	18.0	16.5	61	54	-11.5
CA	1,795	1,843	10,072	10,458	3.8
CO	115	124	625	709	13.4
CT	19.0	19.0	94	94	
DE	7.0	6.5	30.0	30.0	
FL	130	124	584	569	-2.6
GA	77	77	381	361	-5.2
HI	3.6	2.0	12.1	4.5	-62.8
ID	503	537	2,724	2,957	8.6
IL	103	102	489	488	-0.2
IN	166	167	841	842	0.1
IA	211	216	1,074	1,083	0.8
KS	110	109	539	566	5.0
KY	93	91	332	322	-3.0
LA	30	27	105	96	-8.6
ME	32	33	141	147	4.3
MD	60	56	276	269	-2.5
MA	15.0	14.5	65	65	
MI	328	344	1,855	1,902	2.5
MN	455	463	2,171	2,204	1.5
MS	22	21	94	86	-8.5
MO	115	110	444	407	-8.3
MT	18.0	17.0	84	76	-9.5
NE	60	57	279	265	-5.0
NV	27	27	139	143	2.9
NH	14.5	15.0	72	75	4.2
NJ	10.5	10.0	43	44	2.3
NM	353	340	1,770	1,923	8.6
NY	628	626	2,964	3,092	4.3
NC	48	48	242	239	-1.2
ND	31	28	114	108	-5.3
OH	275	279	1,230	1,264	2.8
OK	70	66	296	277	-6.4
OR	115	114	576	525	-8.9
PA	549	551	2,663	2,671	0.3
RI	1.1	1.1	4.4	4.8	9.1
SC	18.0	18.0	87	90	3.4
SD	84	87	401	426	6.2
TN	66	61	270	256	-5.2
TX	347	368	1,853	2,070	11.7
UT	85	85	414	430	3.9
VT	140	140	627	655	4.5
VA	100	98	449	451	0.4
WA	235	244	1,342	1,416	5.5
WV	13.0	12.0	50	46	-8.0
WI	1,246	1,250	5,904	6,046	2.4
WY	7.1	7.0	29.1	35.3	21.3
US ³	9,138	9,249	46,058	47,541	3.2

¹ Includes dry cows, excludes heifers not yet fresh.

² Excludes milk sucked by calves.

³ May not add due to rounding.

**Milk Cows and Production: By State and United States,
Preliminary April-June, 2007-2008**

State	Apr-Jun Milk Cows ¹		Apr-Jun Milk Production ²		Change From 2007
	2007	2008	2007	2008	
	<i>1,000 Head</i>	<i>1,000 Head</i>	<i>Million Pounds</i>	<i>Million Pounds</i>	<i>Percent</i>
AL	13.0	12.0	54	52	-3.7
AK	0.6	0.6	2.2	1.8	-18.2
AZ	182	186	1,121	1,164	3.8
AR	17.5	16.0	60	56	-6.7
CA	1,806	1,848	10,267	10,513	2.4
CO	116	127	681	744	9.3
CT	19.0	19.0	94	94	
DE	7.0	6.5	30.0	30.0	
FL	128	123	596	566	-5.0
GA	77	77	388	364	-6.2
HI	3.0	1.7	9.7	4.8	-50.5
ID	506	548	2,883	3,118	8.2
IL	103	102	501	495	-1.2
IN	167	167	861	849	-1.4
IA	212	216	1,095	1,093	-0.2
KS	109	110	551	601	9.1
KY	91	92	336	325	-3.3
LA	29	26	97	90	-7.2
ME	32	33	148	154	4.1
MD	59	56	265	265	
MA	15.0	14.5	65	67	3.1
MI	332	347	1,912	1,929	0.9
MN	458	463	2,213	2,230	0.8
MS	21	21	90	81	-10.0
MO	113	111	455	435	-4.4
MT	18.0	17.0	87	80	-8.0
NE	59	57	275	265	-3.6
NV	27	27	135	140	3.7
NH	14.5	15.0	74	76	2.7
NJ	10.0	10.0	43	44	2.3
NM	340	341	1,846	2,049	11.0
NY	626	626	3,078	3,205	4.1
NC	48	47	242	233	-3.7
ND	30	27	116	107	-7.8
OH	276	282	1,307	1,355	3.7
OK	69	64	295	268	-9.2
OR	115	113	577	535	-7.3
PA	549	548	2,747	2,750	0.1
RI	1.1	1.1	4.6	5.2	13.0
SC	18.5	18.0	89	86	-3.4
SD	85	89	417	444	6.5
TN	64	59	272	257	-5.5
TX	347	373	1,900	2,174	14.4
UT	85	85	435	445	2.3
VT	140	140	637	659	3.5
VA	100	98	456	451	-1.1
WA	233	244	1,393	1,452	4.2
WV	13.0	12.0	51	46	-9.8
WI	1,247	1,251	6,133	6,219	1.4
WY	7.2	7.0	34.9	36.1	3.4
US ³	9,138	9,274	47,419	48,703	2.7

¹ Includes dry cows, excludes heifers not yet fresh.

² Excludes milk sucked by calves.

³ May not add due to rounding.

Reliability Statement

Survey Procedures: Primary data used to determine these estimates were obtained from a sample of producers. Individual States maintain a list of all known milk producers and information on the size of their herd. States use all known sources of producers to ensure that their lists are as complete as possible. Generally, all large producers and a sample of small producers are included in the survey. Questionnaires are mailed to producers near the end of the month to obtain data for the first day of the month. Additional reports are obtained by telephone, as needed, to supplement the mail response. Where feasible, States utilize state and federal administrative data, rather than conduct a monthly or quarterly survey, to estimate milk production. This eliminates duplication of data gathering by different government agencies. Indications of milk cow inventory are also obtained in the January and July Cattle Surveys.

Estimation Procedures: State offices prepare these estimates by using a combination of survey indications, historic trends, and any available administrative data. Individual State estimates are reviewed by the Agricultural Statistics Board for reasonableness.

Revision Policy: Milk production, rate per cow, and number of cows are subject to revision the following month for monthly States or the following quarter for the quarterly States. Normally, Federal Market Order sales are the main basis for revisions. However, data for all orders are not available in time for this revision. Estimates are again subject to revisions in February each year based on additional administrative data. In the event that additional changes are necessary, a third revision is possible in February the following year. Estimates are again reviewed after data from the five-year Census of Agriculture are available. No revisions are made after that date.

Reliability: Since all operations with dairy animals are not included in the sample, survey estimates are subject to sampling variability. Survey results are also subject to non-sampling errors such as omissions, duplications, and mistakes in reporting, recording, and processing the data. The effects of these errors cannot be measured directly. They are minimized through rigid quality controls in the data collection process and through a careful review of all reported data for consistency and reasonableness.

To assist users in evaluating the reliability of the estimates in this report, the "Root Mean Square Error" is shown for selected items on the next page. The "Root Mean Square Error" is a statistical measure based on past performance and is computed using the differences between first and final estimates. The "Root Mean Square Error" for milk cow inventory estimates over the past 20 quarters is 0.1 percent. This means that chances are 2 out of 3 that the final estimate will not be above or below the current estimate of 9.27 million head by more than 0.1 percent. Chances are 9 out of 10 that the difference will not exceed 0.1 percent.

Reliability of Quarterly Milk Production Estimates ¹

Item	Root Mean Square Error	90% Confidence Level		Difference Between First and Latest Estimates			Quarters	
				Average	Smallest	Largest	First Above Latest	First Below Latest
				Million Pounds	Million Pounds	Million Pounds	Number	Number
Milk Production	<i>Percent</i> 0.3	<i>Percent</i> 0.4	<i>Million Pounds</i> 217	<i>Million Pounds</i> 86	<i>Million Pounds</i> 0	<i>Million Pounds</i> 228	<i>Number</i> 5	<i>Number</i> 14
All Milk Cows	<i>Percent</i> 0.1	<i>Percent</i> 0.1	<i>1,000 Head</i> 12	<i>1,000 Head</i> 6	<i>1,000 Head</i> 0	<i>1,000 Head</i> 14	<i>Number</i> 5	<i>Number</i> 13

¹ Based on the U.S. total for the past 20 quarters.

Information Contacts

Listed below are the commodity specialists in the Livestock Branch of the National Agricultural Statistics Service to contact for additional information.

Dan Kerestes, Chief, Livestock Branch (202) 720-3570

Livestock Section

Scott Hollis, Head, Livestock Section (202) 690-2424
 Jim Collom - Dairy Products (202) 690-3236
 Joe Gaynor - Dairy Products Prices (202) 690-2168
 Jason Hardegree - Cattle, Cattle on Feed (202) 720-3040
 Benita Hodge - Livestock Slaughter (515) 284-4340
 Everett Olbert - Sheep and Goats (202) 690-2424
 Mike Miller - Milk Production and Milk Cows (202) 720-3278
 Nick Streff - Hogs and Pigs (202) 720-3106

ACCESS TO REPORTS!!

For your convenience, there are several ways to obtain NASS reports, data products, and services:

INTERNET ACCESS

All NASS reports are available free of charge on the worldwide Internet. For access, connect to the Internet and go to the NASS Home Page at: www.nass.usda.gov.

E-MAIL SUBSCRIPTION

All NASS reports are available by subscription free of charge direct to your e-mail address. Starting with the NASS Home Page at www.nass.usda.gov, under the right navigation, *Receive reports by Email*, click on **National** or **State**. Follow the instructions on the screen.

PRINTED REPORTS OR DATA PRODUCTS

CALL OUR TOLL-FREE ORDER DESK: 800-999-6779 (U.S. and Canada)
Other areas, please call 703-605-6220 FAX: 703-605-6900
(Visa, MasterCard, check, or money order acceptable for payment.)

ASSISTANCE

For **assistance** with general agricultural statistics or further information about NASS or its products or services, contact the **Agricultural Statistics Hotline** at **800-727-9540**, 7:30 a.m. to 4:00 p.m. ET, or e-mail: nass@nass.usda.gov.

The U.S. Department of Agriculture (USDA) prohibits discrimination in all its programs and activities on the basis of race, color, national origin, age, disability, and where applicable, sex, marital status, familial status, parental status, religion, sexual orientation, genetic information, political beliefs, reprisal, or because all or a part of an individual's income is derived from any public assistance program. (Not all prohibited bases apply to all programs.) Persons with disabilities who require alternative means for communication of program information (Braille, large print, audiotape, etc.) should contact USDA's TARGET Center at (202) 720-2600 (voice and TDD).

To file a complaint of discrimination, write to USDA, Director, Office of Civil Rights, 1400 Independence Avenue, S.W., Washington, D.C. 20250-9410, or call (800) 795-3272 (voice) or (202) 720-6382 (TDD). USDA is an equal opportunity provider and employer.