

Milk Production

Released September 18, 2008, by the National Agricultural Statistics Service (NASS), Agricultural Statistics Board, U.S. Department of Agriculture. For information on *Milk Production* call Mike Miller at 202-720-3278, office hours 7:30 a.m. to 4:00 p.m. ET.

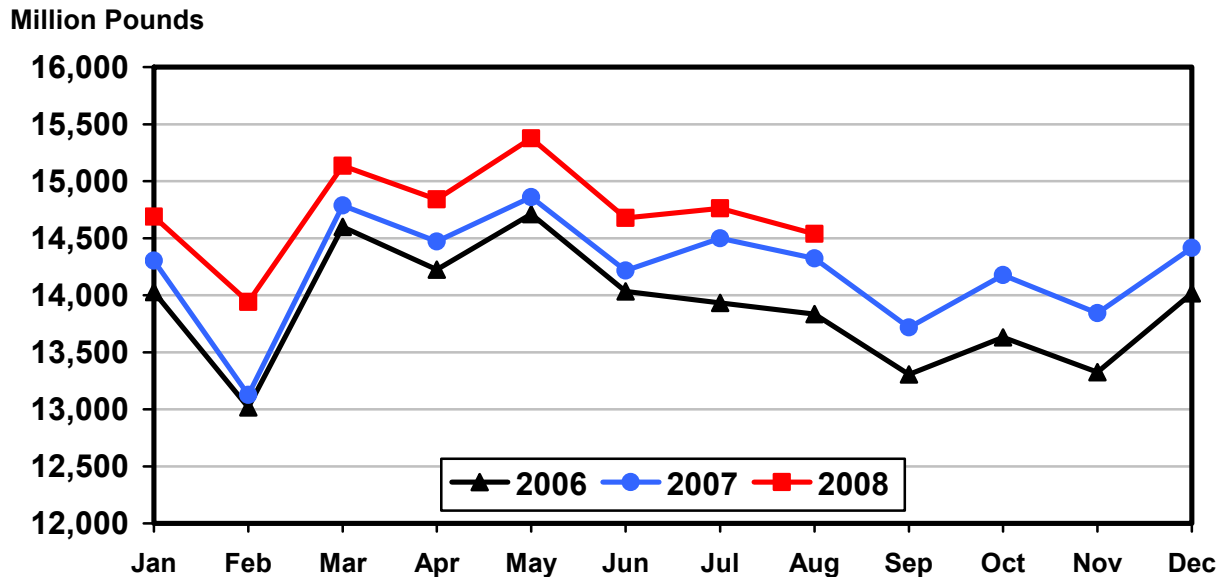
August Milk Production up 1.5 Percent

Milk production in the 23 major States during August totaled 14.5 billion pounds, up 1.5 percent from August 2007. July revised production at 14.8 billion pounds, was up 1.8 percent from July 2007. The July revision represented an increase of 12 million pounds or 0.1 percent from last month's preliminary production estimate.

Production per cow in the 23 major States averaged 1,717 pounds for August, 2 pounds below August 2007.

The number of milk cows on farms in the 23 major States was 8.47 million head, 137,000 head more than August 2007, but 3,000 head less than July 2008.

Monthly Milk Production 23 States



Milk Cows and Production: By Quarter, United States, 2007-2008¹

Quarter	Milk Cows ²		Milk Per Cow ³		Milk Production ³		
	2007	2008	2007	2008	2007	2008	Change From 2007
	<i>1,000 Head</i>	<i>1,000 Head</i>	<i>Pounds</i>	<i>Pounds</i>	<i>Million Pounds</i>	<i>Million Pounds</i>	<i>Percent</i>
Jan-Mar	9,138	9,249	5,040	5,140	46,058	47,541	3.2
Apr-Jun	9,138	9,274	5,189	5,250	47,419	48,684	2.7
Jul-Sep	9,159		5,034		46,110		
Oct-Dec	9,198		5,003		46,015		
Annual	9,158		20,267		185,602		

¹ May not add due to rounding.

² Includes dry cows, excludes heifers not yet fresh.

³ Excludes milk sucked by calves.

Milk Cows and Production: By Month, 23 Selected States, 2007-2008¹

Month	Milk Cows ²		Milk Per Cow ³		Milk Production ³		
	2007	2008	2007	2008	2007	2008	Change from 2007
	<i>1,000 Head</i>	<i>1,000 Head</i>	<i>Pounds</i>	<i>Pounds</i>	<i>Million Pounds</i>	<i>Million Pounds</i>	<i>Percent</i>
Jan	8,284	8,413	1,726	1,746	14,302	14,688	2.7
Feb	8,286	8,427	1,584	1,654	13,125	13,942	6.2
Mar	8,295	8,436	1,783	1,794	14,787	15,134	2.3
Apr	8,292	8,448	1,745	1,757	14,470	14,839	2.6
May	8,298	8,459	1,791	1,818	14,860	15,375	3.5
Jun	8,302	8,460	1,712	1,735	14,216	14,678	3.2
Jul	8,322	8,470	1,742	1,743	14,500	14,762	1.8
Aug	8,330	8,467	1,719	1,717	14,323	14,539	1.5
Sep	8,341		1,645		13,718		
Oct	8,355		1,697		14,176		
Nov	8,369		1,654		13,843		
Dec	8,389		1,718		14,414		
Annual	8,322		20,516		170,734		

¹ 2008 previous month revised.

² Includes dry cows, excludes heifers not yet fresh.

³ Excludes milk sucked by calves.

Estimated Milk Cows and Production: By Month, United States, 2007-2008¹

Month	Milk Cows ²		Milk Per Cow ³		Milk Production ³		
	2007	2008	2007	2008	2007	2008	Change From 2007
	<i>1,000 Head</i>	<i>1,000 Head</i>	<i>Pounds</i>	<i>Pounds</i>	<i>Million Pounds</i>	<i>Million Pounds</i>	<i>Percent</i>
Jan	9,135	9,239	1,708	1,727	15,605	15,952	2.2
Feb	9,136	9,251	1,567	1,637	14,321	15,145	5.8
Mar	9,142	9,258	1,765	1,776	16,132	16,444	1.9
Apr	9,132	9,268	1,726	1,737	15,763	16,098	2.1
May	9,138	9,277	1,771	1,797	16,180	16,671	3.0
Jun	9,144	9,277	1,692	1,716	15,476	15,915	2.8
Jul	9,153	9,286	1,717	1,717	15,714	15,941	1.4
Aug	9,159	9,282	1,695	1,691	15,525	15,700	1.1
Sep	9,166		1,622		14,871		
Oct	9,181		1,674		15,370		
Nov	9,196		1,633		15,013		
Dec	9,217		1,696		15,632		
Annual	9,158		20,267		185,602		

¹ 2008 revised.

² Includes dry cows, excludes heifers not yet fresh.

³ Excludes milk sucked by calves.

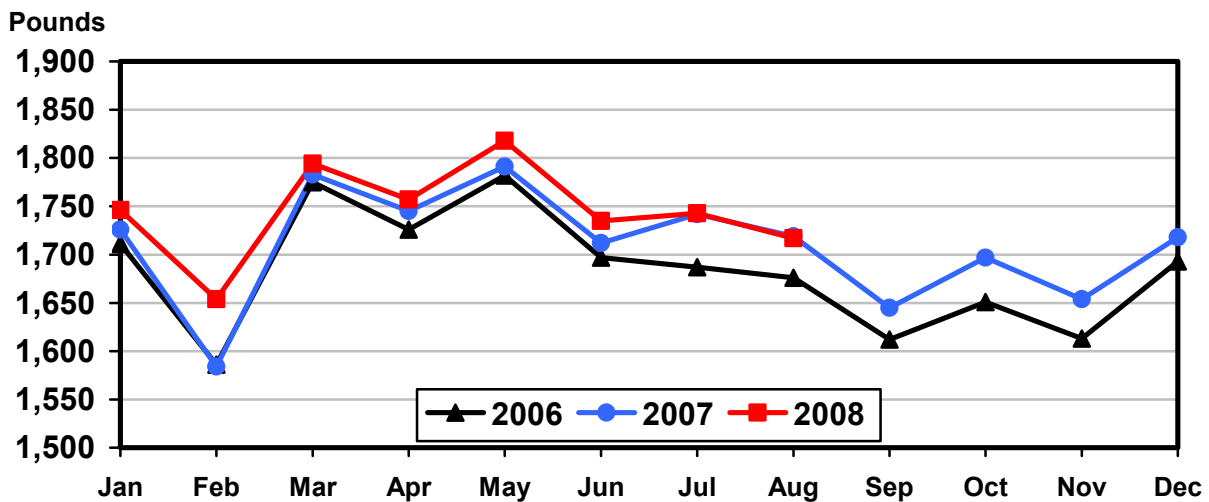
Milk Cows and Production: By State, August 2007-2008

State	Milk Cows ¹		Milk Per Cow ²		Milk Production ²		
	2007	2008	2007	2008	2007	2008	Change From 2007
	<i>1,000 Head</i>	<i>1,000 Head</i>	<i>Pounds</i>	<i>Pounds</i>	<i>Million Pounds</i>	<i>Million Pounds</i>	<i>Percent</i>
AZ	181	184	1,760	1,765	319	325	1.9
CA	1,819	1,843	1,900	1,840	3,456	3,391	-1.9
CO	119	130	1,975	1,930	235	251	6.8
FL	126	120	1,215	1,265	153	152	-0.7
ID	520	555	1,970	1,960	1,024	1,088	6.3
IL	103	102	1,480	1,455	152	148	-2.6
IN	166	166	1,670	1,605	277	266	-4.0
IA	215	215	1,640	1,660	353	357	1.1
KS	108	113	1,600	1,770	173	200	15.6
KY	88	88	1,035	1,000	91	88	-3.3
MI	338	348	1,915	1,840	647	640	-1.1
MN	463	465	1,555	1,560	720	725	0.7
MO	109	112	1,170	1,110	128	124	-3.1
NM	335	337	1,855	1,935	621	652	5.0
NY	625	626	1,640	1,690	1,025	1,058	3.2
OH	276	282	1,470	1,500	406	423	4.2
OR	114	114	1,665	1,685	190	192	1.1
PA	550	548	1,610	1,590	886	871	-1.7
TX	348	385	1,670	1,770	581	681	17.2
VT	139	140	1,540	1,535	214	215	0.5
VA	100	97	1,390	1,380	139	134	-3.6
WA	240	245	2,000	1,985	480	486	1.3
WI	1,248	1,252	1,645	1,655	2,053	2,072	0.9
23-State Total	8,330	8,467	1,719	1,717	14,323	14,539	1.5

¹ Includes dry cows, excludes heifers not yet fresh.

² Excludes milk sucked by calves.

Monthly Milk per Cow 23 States



Milk Cows and Production: By State, July 2007-2008 ¹

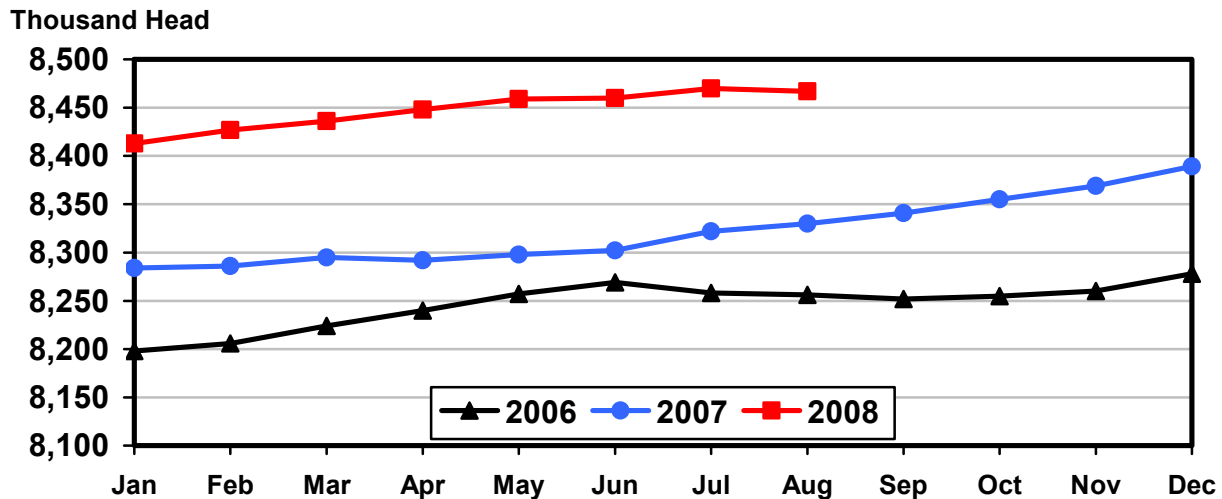
State	Milk Cows ²		Milk per Cow ³		Milk Production ³		
	2007	2008	2007	2008	2007	2008	Change From 2007
	<i>1,000 Head</i>	<i>1,000 Head</i>	<i>Pounds</i>	<i>Pounds</i>	<i>Million Pounds</i>	<i>Million Pounds</i>	<i>Percent</i>
AZ	181	185	1,875	1,815	339	336	-0.9
CA	1,816	1,846	1,900	1,850	3,450	3,415	-1.0
CO	119	129	2,005	1,950	239	252	5.4
FL	127	121	1,380	1,375	175	166	-5.1
ID	516	556	1,970	1,960	1,017	1,090	7.2
IL	103	102	1,550	1,520	160	155	-3.1
IN	167	166	1,700	1,650	284	274	-3.5
IA	215	215	1,700	1,660	366	357	-2.5
KS	108	113	1,660	1,790	179	202	12.8
KY	89	90	1,150	1,030	102	93	-8.8
MI	336	348	1,940	1,870	652	651	-0.2
MN	463	465	1,575	1,595	729	742	1.8
MO	110	111	1,220	1,170	134	130	-3.0
NM	335	338	1,850	2,000	620	676	9.0
NY	626	626	1,650	1,690	1,033	1,058	2.4
OH	276	282	1,530	1,540	422	434	2.8
OR	114	114	1,675	1,675	191	191	
PA	550	546	1,610	1,630	886	890	0.5
TX	348	383	1,720	1,850	599	709	18.4
VT	139	140	1,555	1,585	216	222	2.8
VA	100	97	1,450	1,425	145	138	-4.8
WA	236	245	2,000	2,000	472	490	3.8
WI	1,248	1,252	1,675	1,670	2,090	2,091	
23-State Total	8,322	8,470	1,742	1,743	14,500	14,762	1.8

¹ 2008 revised.

² Includes dry cows, excludes heifers not yet fresh.

³ Excludes milk sucked by calves.

Monthly Milk Cows 23 States



Reliability Statement

Survey Procedures: Primary data used to determine these estimates were obtained from a sample of producers. Individual States maintain a list of all known milk producers and information on the size of their herd. States use all known sources of producers to ensure that their lists are as complete as possible. Generally, all large producers and a sample of small producers are included in the survey. Questionnaires are mailed to producers near the end of the month to obtain data for the first day of the month. Additional reports are obtained by telephone, as needed, to supplement the mail response. Where feasible, States utilize state and federal administrative data, rather than conduct a monthly or quarterly survey, to estimate milk production. This eliminates duplication of data gathering by different government agencies. Indications of milk cow inventory are also obtained in the January and July Cattle Surveys.

Estimation Procedures: State offices prepare these estimates by using a combination of survey indications, historic trends, and any available administrative data. Individual State estimates are reviewed by the Agricultural Statistics Board for reasonableness.

Revision Policy: Milk production, rate per cow, and number of cows are subject to revision the following month for monthly States or the following quarter for the quarterly States. Normally, Federal Market Order sales are the main basis for revisions. However, data for all orders are not available in time for this revision. Estimates are again subject to revisions in February each year based on additional administrative data. In the event that additional changes are necessary, a third revision is possible in February the following year. Estimates are again reviewed after data from the five-year Census of Agriculture are available. No revisions are made after that date.

Reliability: Since all operations with dairy animals are not included in the sample, survey estimates are subject to sampling variability. Survey results are also subject to non-sampling errors such as omissions, duplications, and mistakes in reporting, recording, and processing the data. The effects of these errors cannot be measured directly. They are minimized through rigid quality controls in the data collection process and through a careful review of all reported data for consistency and reasonableness.

To assist users in evaluating the reliability of the estimates in this report, the "Root Mean Square Error" is shown for selected items on the next page. The "Root Mean Square Error" is a statistical measure based on past performance and is computed using the differences between first and final estimates. The "Root Mean Square Error" for the 23 State milk cow inventory estimates over the past 24 months is 0.1 percent. This means that chances are 2 out of 3 that the final estimate will not be above or below the current estimate of 8.47 million head by more than 0.1 percent. Chances are 9 out of 10 that the difference will not exceed 0.2 percent.

Reliability of Monthly Milk Production Estimates ¹

Item	Root Mean Square Error	90% Confidence Level		Difference Between First and Latest Estimates			Months	
				Average	Smallest	Largest	First Above Latest	First Below Latest
				Million Pounds	Million Pounds	Million Pounds	Number	Number
Milk Production	<i>Percent</i> 0.2	<i>Percent</i> 0.3	<i>Million Pounds</i> 44	<i>Million Pounds</i> 19	<i>Million Pounds</i> 0	<i>Million Pounds</i> 74	<i>Number</i> 10	<i>Number</i> 13
All Milk Cows	<i>Percent</i> 0.1	<i>Percent</i> 0.2	<i>1,000 Head</i> 15	<i>1,000 Head</i> 7	<i>1,000 Head</i> 0	<i>1,000 Head</i> 15	<i>Number</i> 2	<i>Number</i> 20

¹ Based on the 23 State total for the past 24 months.

Information Contacts

Listed below are the commodity specialists in the Livestock Branch of the National Agricultural Statistics Service to contact for additional information.

Dan Kerestes, Chief, Livestock Branch (202) 720-3570

Livestock Section

Scott Hollis, Head, Livestock Section (202) 690-2424
 Jim Collom - Dairy Products (202) 690-3236
 Joe Gaynor - Dairy Products Prices (202) 690-2168
 Jason Hardegree - Cattle, Cattle on Feed (202) 720-3040
 Benita Hodge - Livestock Slaughter (515) 284-4340
 Everett Olbert - Sheep and Goats (202) 720-4751
 Mike Miller - Milk Production and Milk Cows (202) 720-3278
 Nick Streff - Hogs and Pigs (202) 720-3106

ACCESS TO REPORTS!!

For your convenience, there are several ways to obtain NASS reports, data products, and services:

INTERNET ACCESS

All NASS reports are available free of charge on the worldwide Internet. For access, connect to the Internet and go to the NASS Home Page at www.nass.usda.gov.

E-MAIL SUBSCRIPTION

All NASS reports are available by subscription free of charge direct to your e-mail address. Starting with the NASS Home Page at www.nass.usda.gov, under the right navigation, *Receive reports by Email*, click on **National** or **State**. Follow the instructions on the screen.

PRINTED REPORTS OR DATA PRODUCTS

CALL OUR TOLL-FREE ORDER DESK: 800-999-6779 (U.S. and Canada)
Other areas, please call 703-605-6220 FAX: 703-605-6900
(Visa, MasterCard, check, or money order acceptable for payment.)

ASSISTANCE

For **assistance** with general agricultural statistics or further information about NASS or its products or services, contact the **Agricultural Statistics Hotline** at **800-727-9540**, 7:30 a.m. to 4:00 p.m. ET, or e-mail: nass@nass.usda.gov.

The U.S. Department of Agriculture (USDA) prohibits discrimination in all its programs and activities on the basis of race, color, national origin, age, disability, and where applicable, sex, marital status, familial status, parental status, religion, sexual orientation, genetic information, political beliefs, reprisal, or because all or a part of an individual's income is derived from any public assistance program. (Not all prohibited bases apply to all programs.) Persons with disabilities who require alternative means for communication of program information (Braille, large print, audiotape, etc.) should contact USDA's TARGET Center at (202) 720-2600 (voice and TDD).

To file a complaint of discrimination, write to USDA, Director, Office of Civil Rights, 1400 Independence Avenue, S.W., Washington, D.C. 20250-9410, or call (800) 795-3272 (voice) or (202) 720-6382 (TDD). USDA is an equal opportunity provider and employer.