

# Milk Production

Released October 17, 2008, by the National Agricultural Statistics Service (NASS), Agricultural Statistics Board, U.S. Department of Agriculture. For information on *Milk Production* call Mike Miller at 202-720-3278, office hours 7:30 a.m. to 4:00 p.m. ET.

## September Milk Production up 1.9 Percent

**Milk production** in the 23 major States during September totaled 14.0 billion pounds, up 1.9 percent from September 2007. August revised production at 14.6 billion pounds, was up 1.7 percent from August 2007. The August revision represented an increase of 24 million pounds or 0.2 percent from last month's preliminary production estimate.

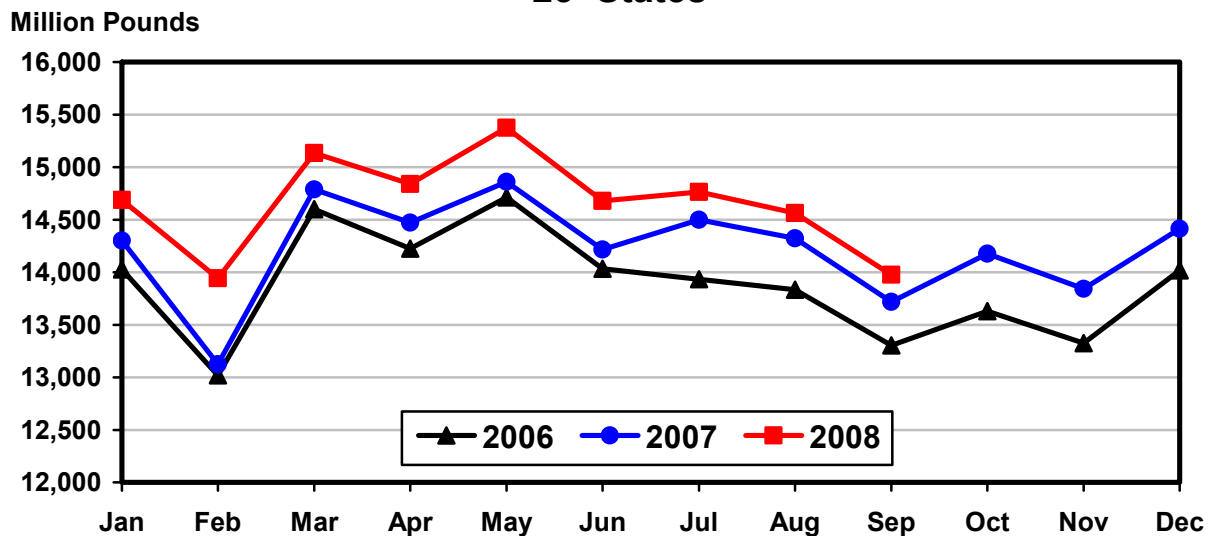
**Production per cow** in the 23 major States averaged 1,652 pounds for September, 7 pounds above September 2007.

**The number of milk cows** on farms in the 23 major States was 8.46 million head, 118,000 head more than September 2007, but 8,000 head less than August 2008.

## July - September Milk Production up 1.6 Percent

Milk production in the U.S. during the July - September quarter totaled 46.8 billion pounds, up 1.6 percent from the July - September quarter last year. The average number of milk cows in the U.S. during the quarter was 9.28 million head, 118,000 head more than the same period last year.

## Monthly Milk Production 23 States



**Milk Cows and Production: By Quarter, United States, 2007-2008 <sup>1</sup>**

Quarter	Milk Cows <sup>2</sup>		Milk Per Cow <sup>3</sup>		Milk Production <sup>3</sup>		
	2007	2008	2007	2008	2007	2008	Change From 2007
	<i>1,000 Head</i>	<i>1,000 Head</i>	<i>Pounds</i>	<i>Pounds</i>	<i>Million Pounds</i>	<i>Million Pounds</i>	<i>Percent</i>
Jan-Mar	9,138	9,249	5,040	5,140	46,058	47,541	3.2
Apr-Jun	9,138	9,274	5,189	5,249	47,419	48,683	2.7
Jul-Sep	9,159	9,277	5,034	5,049	46,110	46,841	1.6
Oct-Dec	9,198		5,003		46,015		
Annual	9,158		20,267		185,602		

<sup>1</sup> May not add due to rounding.

<sup>2</sup> Includes dry cows, excludes heifers not yet fresh.

<sup>3</sup> Excludes milk sucked by calves.

**Milk Cows and Production: By Month, 23 Selected States, 2007-2008 <sup>1</sup>**

Month	Milk Cows <sup>2</sup>		Milk Per Cow <sup>3</sup>		Milk Production <sup>3</sup>		
	2007	2008	2007	2008	2007	2008	Change from 2007
	<i>1,000 Head</i>	<i>1,000 Head</i>	<i>Pounds</i>	<i>Pounds</i>	<i>Million Pounds</i>	<i>Million Pounds</i>	<i>Percent</i>
Jan	8,284	8,413	1,726	1,746	14,302	14,688	2.7
Feb	8,286	8,427	1,584	1,654	13,125	13,942	6.2
Mar	8,295	8,436	1,783	1,794	14,787	15,134	2.3
Apr	8,292	8,448	1,745	1,757	14,470	14,839	2.6
May	8,298	8,459	1,791	1,818	14,860	15,375	3.5
Jun	8,302	8,460	1,712	1,735	14,216	14,678	3.2
Jul	8,322	8,470	1,742	1,743	14,500	14,762	1.8
Aug	8,330	8,467	1,719	1,720	14,323	14,563	1.7
Sep	8,341	8,459	1,645	1,652	13,718	13,976	1.9
Oct	8,355		1,697		14,176		
Nov	8,369		1,654		13,843		
Dec	8,389		1,718		14,414		
Annual	8,322		20,516		170,734		

<sup>1</sup> 2008 previous month revised.

<sup>2</sup> Includes dry cows, excludes heifers not yet fresh.

<sup>3</sup> Excludes milk sucked by calves.

**Estimated Milk Cows and Production: By Month, United States, 2007-2008 <sup>1</sup>**

Month	Milk Cows <sup>2</sup>		Milk Per Cow <sup>3</sup>		Milk Production <sup>3</sup>		
	2007	2008	2007	2008	2007	2008	Change From 2007
	<i>1,000 Head</i>	<i>1,000 Head</i>	<i>Pounds</i>	<i>Pounds</i>	<i>Million Pounds</i>	<i>Million Pounds</i>	<i>Percent</i>
Jan	9,135	9,239	1,708	1,727	15,605	15,952	2.2
Feb	9,136	9,251	1,567	1,637	14,321	15,145	5.8
Mar	9,142	9,258	1,765	1,776	16,132	16,444	1.9
Apr	9,132	9,268	1,726	1,737	15,763	16,098	2.1
May	9,138	9,277	1,771	1,797	16,180	16,671	3.0
Jun	9,144	9,277	1,692	1,715	15,476	15,914	2.8
Jul	9,153	9,284	1,717	1,720	15,714	15,969	1.6
Aug	9,159	9,279	1,695	1,698	15,525	15,754	1.5
Sep	9,166	9,269	1,622	1,631	14,871	15,118	1.7
Oct	9,181		1,674		15,370		
Nov	9,196		1,633		15,013		
Dec	9,217		1,696		15,632		
Annual	9,158		20,267		185,602		

<sup>1</sup> 2008 revised.

<sup>2</sup> Includes dry cows, excludes heifers not yet fresh.

<sup>3</sup> Excludes milk sucked by calves.

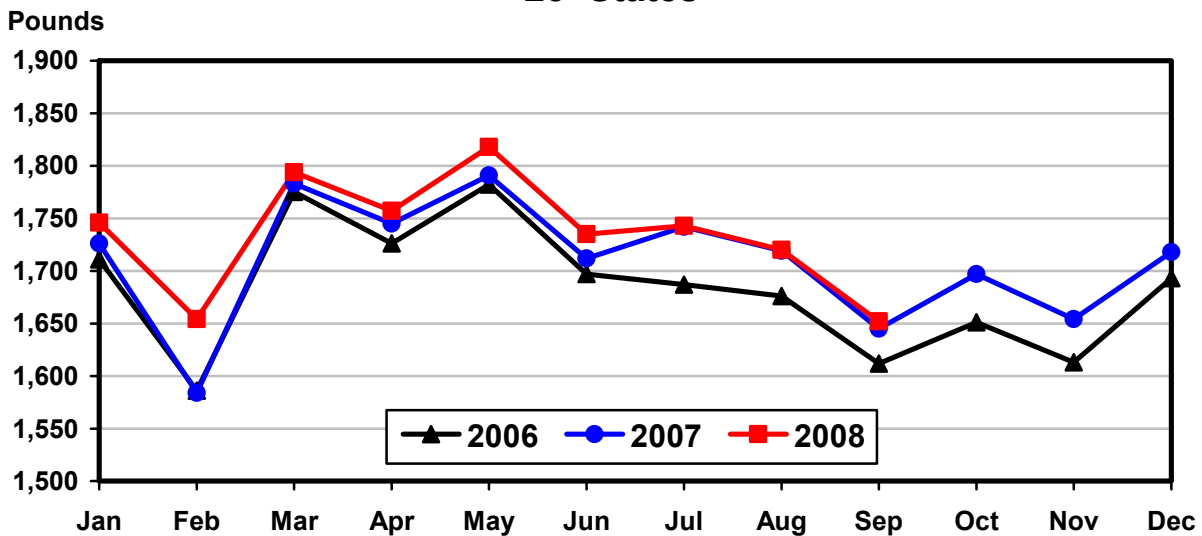
**Milk Cows and Production: By State, September 2007-2008**

State	Milk Cows <sup>1</sup>		Milk Per Cow <sup>2</sup>		Milk Production <sup>2</sup>		
	2007	2008	2007	2008	2007	2008	Change From 2007
	<i>1,000 Head</i>	<i>1,000 Head</i>	<i>Pounds</i>	<i>Pounds</i>	<i>Million Pounds</i>	<i>Million Pounds</i>	<i>Percent</i>
AZ	182	184	1,705	1,720	310	316	1.9
CA	1,822	1,841	1,785	1,780	3,252	3,277	0.8
CO	120	130	1,900	1,850	228	241	5.7
FL	125	120	1,150	1,165	144	140	-2.8
ID	521	554	1,880	1,870	979	1,036	5.8
IL	103	102	1,440	1,425	148	145	-2.0
IN	166	166	1,635	1,550	271	257	-5.2
IA	215	215	1,580	1,630	340	350	2.9
KS	108	114	1,610	1,670	174	190	9.2
KY	88	87	1,040	1,020	92	89	-3.3
MI	339	350	1,830	1,770	620	620	
MN	463	465	1,485	1,500	688	698	1.5
MO	109	111	1,140	1,100	124	122	-1.6
NM	336	336	1,800	1,880	605	632	4.5
NY	626	626	1,570	1,590	983	995	1.2
OH	277	278	1,425	1,450	395	403	2.0
OR	115	114	1,550	1,595	178	182	2.2
PA	550	548	1,550	1,530	853	838	-1.8
TX	348	385	1,640	1,710	571	658	15.2
VT	140	139	1,465	1,470	205	204	-0.5
VA	100	97	1,350	1,370	135	133	-1.5
WA	240	244	1,905	1,900	457	464	1.5
WI	1,248	1,253	1,575	1,585	1,966	1,986	1.0
23-State Total	8,341	8,459	1,645	1,652	13,718	13,976	1.9

<sup>1</sup> Includes dry cows, excludes heifers not yet fresh.

<sup>2</sup> Excludes milk sucked by calves.

**Monthly Milk per Cow  
23 States**



**Milk Cows and Production: By State, August 2007-2008 <sup>1</sup>**

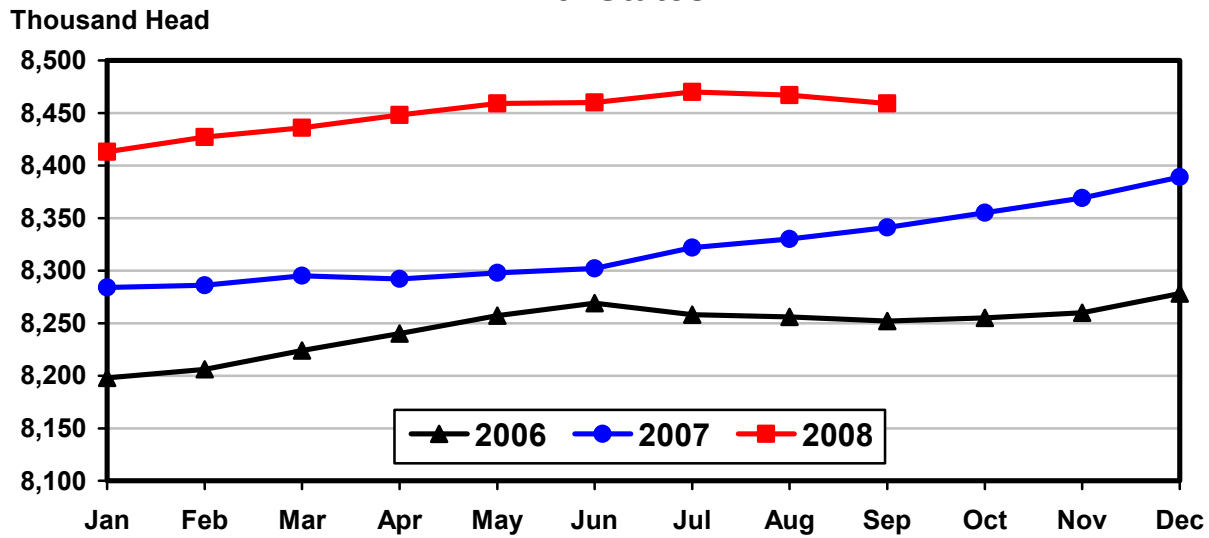
State	Milk Cows <sup>2</sup>		Milk per Cow <sup>3</sup>		Milk Production <sup>3</sup>		Change From 2007
	2007	2008	2007	2008	2007	2008	
	<i>1,000 Head</i>	<i>1,000 Head</i>	<i>Pounds</i>	<i>Pounds</i>	<i>Million Pounds</i>	<i>Million Pounds</i>	<i>Percent</i>
AZ	181	184	1,760	1,765	319	325	1.9
CA	1,819	1,843	1,900	1,845	3,456	3,400	-1.6
CO	119	130	1,975	1,930	235	251	6.8
FL	126	120	1,215	1,240	153	149	-2.6
ID	520	555	1,970	1,970	1,024	1,093	6.7
IL	103	102	1,480	1,455	152	148	-2.6
IN	166	166	1,670	1,605	277	266	-4.0
IA	215	215	1,640	1,660	353	357	1.1
KS	108	113	1,600	1,770	173	200	15.6
KY	88	88	1,035	1,030	91	91	
MI	338	350	1,915	1,860	647	651	0.6
MN	463	465	1,555	1,565	720	728	1.1
MO	109	112	1,170	1,110	128	124	-3.1
NM	335	337	1,855	1,935	621	652	5.0
NY	625	626	1,640	1,690	1,025	1,058	3.2
OH	276	280	1,470	1,520	406	426	4.9
OR	114	114	1,665	1,650	190	188	-1.1
PA	550	548	1,610	1,590	886	871	-1.7
TX	348	385	1,670	1,770	581	681	17.2
VT	139	140	1,540	1,535	214	215	0.5
VA	100	97	1,390	1,410	139	137	-1.4
WA	240	245	2,000	1,985	480	486	1.3
WI	1,248	1,252	1,645	1,650	2,053	2,066	0.6
23-State Total	8,330	8,467	1,719	1,720	14,323	14,563	1.7

<sup>1</sup> 2008 revised.

<sup>2</sup> Includes dry cows, excludes heifers not yet fresh.

<sup>3</sup> Excludes milk sucked by calves.

**Monthly Milk Cows  
23 States**



**Milk Cows and Production: By State and United States,  
Revised April-June, 2007-2008**

State	Apr-Jun Milk Cows <sup>1</sup>		Apr-Jun Milk Production <sup>2</sup>		Change From 2007
	2007	2008	2007	2008	
	<i>1,000 Head</i>	<i>1,000 Head</i>	<i>Million Pounds</i>	<i>Million Pounds</i>	<i>Percent</i>
AL	13.0	12.0	54	51	-5.6
AK	0.6	0.6	2.2	1.8	-18.2
AZ	182	186	1,121	1,164	3.8
AR	17.5	15.5	60	54	-10.0
CA	1,806	1,848	10,267	10,513	2.4
CO	116	127	681	744	9.3
CT	19.0	19.0	94	94	
DE	7.0	6.5	30.0	29.0	-3.3
FL	128	123	596	557	-6.5
GA	77	77	388	364	-6.2
HI	3.0	1.7	9.7	4.8	-50.5
ID	506	548	2,883	3,114	8.0
IL	103	102	501	495	-1.2
IN	167	167	861	849	-1.4
IA	212	216	1,095	1,096	0.1
KS	109	110	551	601	9.1
KY	91	92	336	320	-4.8
LA	29	26	97	90	-7.2
ME	32	33	148	154	4.1
MD	59	56	265	267	0.8
MA	15.0	14.5	65	67	3.1
MI	332	347	1,912	1,929	0.9
MN	458	463	2,213	2,228	0.7
MS	21	21	90	80	-11.1
MO	113	111	455	435	-4.4
MT	18.0	17.0	87	80	-8.0
NE	59	57	275	265	-3.6
NV	27	27	135	140	3.7
NH	14.5	15.0	74	76	2.7
NJ	10.0	10.0	43	44	2.3
NM	340	341	1,846	2,049	11.0
NY	626	626	3,078	3,205	4.1
NC	48	47	242	233	-3.7
ND	30	27	116	107	-7.8
OH	276	282	1,307	1,346	3.0
OK	69	64	295	268	-9.2
OR	115	113	577	532	-7.8
PA	549	548	2,747	2,750	0.1
RI	1.1	1.1	4.6	5.2	13.0
SC	18.5	18.0	89	88	-1.1
SD	85	89	417	446	7.0
TN	64	59	272	255	-6.3
TX	347	373	1,900	2,174	14.4
UT	85	85	435	445	2.3
VT	140	140	637	661	3.8
VA	100	98	456	447	-2.0
WA	233	244	1,393	1,451	4.2
WV	13.0	12.0	51	46	-9.8
WI	1,247	1,251	6,133	6,232	1.6
WY	7.2	7.0	34.9	36.1	3.4
US <sup>3</sup>	9,138	9,274	47,419	48,683	2.7

<sup>1</sup> Includes dry cows, excludes heifers not yet fresh.

<sup>2</sup> Excludes milk sucked by calves.

<sup>3</sup> May not add due to rounding.

**Milk Cows and Production: By State and United States,  
Preliminary July-September, 2007-2008**

State	Jul-Sep Milk Cows <sup>1</sup>		Jul-Sep Milk Production <sup>2</sup>		Change From 2007
	2007	2008	2007	2008	
	<i>1,000 Head</i>	<i>1,000 Head</i>	<i>Million Pounds</i>	<i>Million Pounds</i>	<i>Percent</i>
AL	13.0	12.0	40	38	-5.0
AK	0.6	0.6	2.5	1.7	-32.0
AZ	181	184	968	977	0.9
AR	17.0	14.5	49	45	-8.2
CA	1,819	1,843	10,158	10,092	-0.6
CO	119	130	702	744	6.0
CT	19.0	18.5	89	88	-1.1
DE	6.5	6.5	26.0	25.0	-3.8
FL	126	120	472	455	-3.6
GA	77	75	312	305	-2.2
HI	2.6	1.6	7.4	4.4	-40.5
ID	519	555	3,020	3,219	6.6
IL	103	102	460	448	-2.6
IN	166	166	832	797	-4.2
IA	215	215	1,059	1,064	0.5
KS	108	113	526	592	12.5
KY	88	88	285	273	-4.2
LA	28	26	71	67	-5.6
ME	33	33	151	154	2.0
MD	57	56	249	243	-2.4
MA	14.5	14.5	63	64	1.6
MI	338	349	1,919	1,922	0.2
MN	463	465	2,137	2,168	1.5
MS	21	20	68	62	-8.8
MO	109	111	386	376	-2.6
MT	17.0	17.0	82	81	-1.2
NE	58	59	260	272	4.6
NV	27	27	138	142	2.9
NH	14.5	15.0	72	73	1.4
NJ	10.0	10.0	41	41	
NM	335	337	1,846	1,960	6.2
NY	626	626	3,041	3,111	2.3
NC	47	46	216	207	-4.2
ND	28	27	108	104	-3.7
OH	276	280	1,223	1,263	3.3
OK	68	63	282	249	-11.7
OR	114	114	559	561	0.4
PA	550	547	2,625	2,599	-1.0
RI	1.1	1.1	4.6	4.9	6.5
SC	18.0	18.0	71	70	-1.4
SD	85	91	410	458	11.7
TN	62	58	224	212	-5.4
TX	348	384	1,751	2,048	17.0
UT	85	85	448	447	-0.2
VT	139	140	635	641	0.9
VA	100	97	419	408	-2.6
WA	239	245	1,409	1,440	2.2
WV	13.0	12.0	49	45	-8.2
WI	1,248	1,252	6,109	6,143	0.6
WY	7.0	7.0	35.0	36.6	4.6
US <sup>3</sup>	9,159	9,277	46,110	46,841	1.6

<sup>1</sup> Includes dry cows, excludes heifers not yet fresh.

<sup>2</sup> Excludes milk sucked by calves.

<sup>3</sup> May not add due to rounding.

## Reliability Statement

**Survey Procedures:** Primary data used to determine these estimates were obtained from a sample of producers. Individual States maintain a list of all known milk producers and information on the size of their herd. States use all known sources of producers to ensure that their lists are as complete as possible. Generally, all large producers and a sample of small producers are included in the survey. Questionnaires are mailed to producers near the end of the month to obtain data for the first day of the month. Additional reports are obtained by telephone, as needed, to supplement the mail response. Where feasible, States utilize state and federal administrative data, rather than conduct a monthly or quarterly survey, to estimate milk production. This eliminates duplication of data gathering by different government agencies. Indications of milk cow inventory are also obtained in the January and July Cattle Surveys.

**Estimation Procedures:** State offices prepare these estimates by using a combination of survey indications, historic trends, and any available administrative data. Individual State estimates are reviewed by the Agricultural Statistics Board for reasonableness.

**Revision Policy:** Milk production, rate per cow, and number of cows are subject to revision the following month for monthly States or the following quarter for the quarterly States. Normally, Federal Market Order sales are the main basis for revisions. However, data for all orders are not available in time for this revision. Estimates are again subject to revisions in February each year based on additional administrative data. In the event that additional changes are necessary, a third revision is possible in February the following year. Estimates are again reviewed after data from the five-year Census of Agriculture are available. No revisions are made after that date.

**Reliability:** Since all operations with dairy animals are not included in the sample, survey estimates are subject to sampling variability. Survey results are also subject to non-sampling errors such as omissions, duplications, and mistakes in reporting, recording, and processing the data. The effects of these errors cannot be measured directly. They are minimized through rigid quality controls in the data collection process and through a careful review of all reported data for consistency and reasonableness.

To assist users in evaluating the reliability of the estimates in this report, the "Root Mean Square Error" is shown for selected items on the next page. The "Root Mean Square Error" is a statistical measure based on past performance and is computed using the differences between first and final estimates. The "Root Mean Square Error" for milk cow inventory estimates over the past 20 quarters is 0.1 percent. This means that chances are 2 out of 3 that the final estimate will not be above or below the current estimate of 9.28 million head by more than 0.1 percent. Chances are 9 out of 10 that the difference will not exceed 0.1 percent.

**Reliability of Quarterly Milk Production Estimates <sup>1</sup>**

Item	Root Mean Square Error	90% Confidence Level		Difference Between First and Latest Estimates			Quarters	
				Average	Smallest	Largest	First Above Latest	First Below Latest
				Million Pounds	Million Pounds	Million Pounds	Number	Number
Milk Production	<i>Percent</i> 0.2	<i>Percent</i> 0.4	<i>Million Pounds</i> 201	<i>Million Pounds</i> 80	<i>Million Pounds</i> 0	<i>Million Pounds</i> 228	<i>Number</i> 6	<i>Number</i> 13
All Milk Cows	<i>Percent</i> 0.1	<i>Percent</i> 0.1	<i>1,000 Head</i> 11	<i>1,000 Head</i> 5	<i>1,000 Head</i> 0	<i>1,000 Head</i> 14	<i>Number</i> 5	<i>Number</i> 13

<sup>1</sup> Based on the U.S. total for the past 20 quarters.

**Information Contacts**

Listed below are the commodity specialists in the Livestock Branch of the National Agricultural Statistics Service to contact for additional information.

Dan Kerestes, Chief, Livestock Branch ..... (202) 720-3570

**Livestock Section**

Scott Hollis, Head, Livestock Section ..... (202) 690-2424  
 Jim Collom - Dairy Products ..... (202) 690-3236  
 Joe Gaynor - Dairy Products Prices ..... (202) 690-2168  
 Jason Hardegee - Cattle, Cattle on Feed ..... (202) 720-3040  
 Benita Hodge - Livestock Slaughter ..... (515) 284-4340  
 Everett Olbert - Sheep and Goats ..... (202) 720-4751  
 Mike Miller - Milk Production and Milk Cows ..... (202) 720-3278  
 Nick Streff - Hogs and Pigs ..... (202) 720-3106



## ACCESS TO REPORTS!!

---

For your convenience, there are several ways to obtain NASS reports, data products, and services:

### INTERNET ACCESS

All NASS reports are available free of charge on the worldwide Internet. For access, connect to the Internet and go to the NASS Home Page at: [www.nass.usda.gov](http://www.nass.usda.gov).

### E-MAIL SUBSCRIPTION

All NASS reports are available by subscription free of charge direct to your e-mail address. Starting with the NASS Home Page at [www.nass.usda.gov](http://www.nass.usda.gov), under the right navigation, *Receive reports by Email*, click on **National** or **State**. Follow the instructions on the screen.

-----

### PRINTED REPORTS OR DATA PRODUCTS

**CALL OUR TOLL-FREE ORDER DESK: 800-999-6779 (U.S. and Canada)**  
**Other areas, please call 703-605-6220      FAX: 703-605-6900**  
**(Visa, MasterCard, check, or money order acceptable for payment.)**

-----

### ASSISTANCE

For **assistance** with general agricultural statistics or further information about NASS or its products or services, contact the **Agricultural Statistics Hotline** at **800-727-9540**, 7:30 a.m. to 4:00 p.m. ET, or e-mail: [nass@nass.usda.gov](mailto:nass@nass.usda.gov).

The U.S. Department of Agriculture (USDA) prohibits discrimination in all its programs and activities on the basis of race, color, national origin, age, disability, and where applicable, sex, marital status, familial status, parental status, religion, sexual orientation, genetic information, political beliefs, reprisal, or because all or a part of an individual's income is derived from any public assistance program. (Not all prohibited bases apply to all programs.) Persons with disabilities who require alternative means for communication of program information (Braille, large print, audiotape, etc.) should contact USDA's TARGET Center at (202) 720-2600 (voice and TDD).

To file a complaint of discrimination, write to USDA, Director, Office of Civil Rights, 1400 Independence Avenue, S.W., Washington, D.C. 20250-9410, or call (800) 795-3272 (voice) or (202) 720-6382 (TDD). USDA is an equal opportunity provider and employer.

# **USDA Data Users' Meeting**

**October 20, 2008**

**Doubletree Hotel Chicago O'Hare Airport-Rosemont**

**Rosemont, Illinois**

**(847) 292-9100**

The USDA's National Agricultural Statistics Service will be organizing an open forum for data users. The purpose will be to provide updates on pending changes in the various statistical and information programs and seek comments and input from data users. Other USDA agencies to be represented will include the Agricultural Marketing Service, the Economic Research Service, the Foreign Agricultural Service, and World Agricultural Outlook Board. The Foreign Trade Division from the Census Bureau will also be included in the meeting.

For registration details or additional information for the Data Users' Meeting, see the NASS homepage at [www.nass.usda.gov/forum/](http://www.nass.usda.gov/forum/) or contact Marjorie Taylor (NASS) at (202) 690-8141 or at [marjorie\\_taylor@nass.usda.gov](mailto:marjorie_taylor@nass.usda.gov).

This Data Users' Meeting precedes an Industry Outlook meeting that will be held at the same location on October 21, 2008. The Outlook meeting brings together analysts from various commodity sectors to discuss the outlook situation. For registration details or additional information for the Industry Outlook Meeting see the Livestock and Marketing Information Center (LMIC) homepage at [www.lmic.info](http://www.lmic.info) or contact Jim Robb at (720) 544-2941 or at [robb@lmic.info](mailto:robb@lmic.info).