

# Milk Production

Released January 16, 2009, by the National Agricultural Statistics Service (NASS), Agricultural Statistics Board, U.S. Department of Agriculture. For information on *Milk Production* call Mike Miller at 202-720-3278, office hours 7:30 a.m. to 4:00 p.m. ET.

## December Milk Production up 1.5 Percent

**Milk production** in the 23 major States during December totaled 14.6 billion pounds, up 1.5 percent from December 2007. November revised production at 14.0 billion pounds, was up 1.3 percent November 2007. The November revision represented a decrease of 11 million pounds or 0.1 percent from last month's preliminary production estimate.

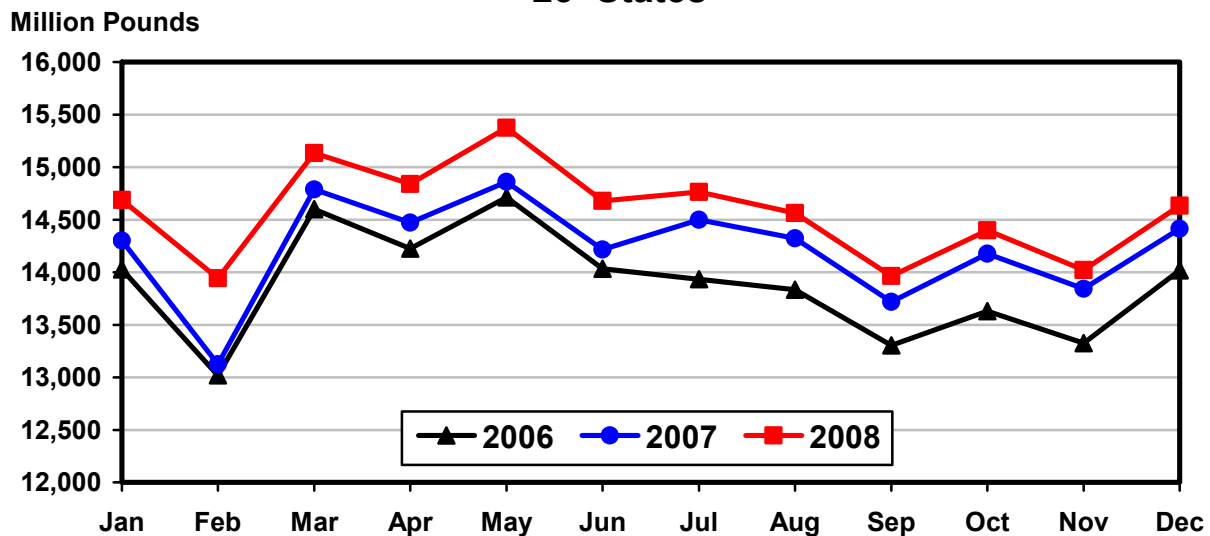
**Production per cow** in the 23 major States averaged 1,726 pounds for December, 8 pounds above December 2007.

**The number of milk cows** on farms in the 23 major States was 8.48 million head, 90,000 head more than December 2007, and 7,000 head more than November 2008.

## October - December Milk Production up 1.4 Percent

Milk production in the U.S. during the October - December quarter totaled 46.6 billion pounds, up 1.4 percent from the October - December quarter last year. The average number of milk cows in the U.S. during the quarter was 9.28 million head, 85,000 head more than the same period last year.

## Monthly Milk Production 23 States



**Milk Cows and Production: By Quarter, United States, 2007-2008<sup>1</sup>**

Quarter	Milk Cows <sup>2</sup>		Milk Per Cow <sup>3</sup>		Milk Production <sup>3</sup>		
	2007	2008	2007	2008	2007	2008	Change From 2007
	<i>1,000 Head</i>	<i>1,000 Head</i>	<i>Pounds</i>	<i>Pounds</i>	<i>Million Pounds</i>	<i>Million Pounds</i>	<i>Percent</i>
Jan-Mar	9,138	9,249	5,040	5,140	46,058	47,541	3.2
Apr-Jun	9,138	9,274	5,189	5,249	47,419	48,683	2.7
Jul-Sep	9,159	9,278	5,034	5,048	46,110	46,835	1.6
Oct-Dec	9,198	9,283	5,003	5,024	46,015	46,640	1.4
Annual	9,158	9,271	20,267	20,462	185,602	189,699	2.2

<sup>1</sup> May not add due to rounding.

<sup>2</sup> Includes dry cows, excludes heifers not yet fresh.

<sup>3</sup> Excludes milk sucked by calves.

**Milk Cows and Production: By Month, 23 Selected States, 2007-2008<sup>1</sup>**

Month	Milk Cows <sup>2</sup>		Milk Per Cow <sup>3</sup>		Milk Production <sup>3</sup>		
	2007	2008	2007	2008	2007	2008	Change from 2007
	<i>1,000 Head</i>	<i>1,000 Head</i>	<i>Pounds</i>	<i>Pounds</i>	<i>Million Pounds</i>	<i>Million Pounds</i>	<i>Percent</i>
Jan	8,284	8,413	1,726	1,746	14,302	14,688	2.7
Feb	8,286	8,427	1,584	1,654	13,125	13,942	6.2
Mar	8,295	8,436	1,783	1,794	14,787	15,134	2.3
Apr	8,292	8,448	1,745	1,757	14,470	14,839	2.6
May	8,298	8,459	1,791	1,818	14,860	15,375	3.5
Jun	8,302	8,460	1,712	1,735	14,216	14,678	3.2
Jul	8,322	8,470	1,742	1,743	14,500	14,762	1.8
Aug	8,330	8,467	1,719	1,720	14,323	14,563	1.7
Sep	8,341	8,459	1,645	1,651	13,718	13,963	1.8
Oct	8,355	8,462	1,697	1,701	14,176	14,398	1.6
Nov	8,369	8,472	1,654	1,655	13,843	14,021	1.3
Dec	8,389	8,479	1,718	1,726	14,414	14,633	1.5
Annual	8,322	8,454	20,516	20,700	170,734	174,996	2.5

<sup>1</sup> 2008 previous month revised.

<sup>2</sup> Includes dry cows, excludes heifers not yet fresh.

<sup>3</sup> Excludes milk sucked by calves.

**Estimated Milk Cows and Production: By Month, United States, 2007-2008<sup>1</sup>**

Month	Milk Cows <sup>2</sup>		Milk Per Cow <sup>3</sup>		Milk Production <sup>3</sup>		
	2007	2008	2007	2008	2007	2008	Change From 2007
	<i>1,000 Head</i>	<i>1,000 Head</i>	<i>Pounds</i>	<i>Pounds</i>	<i>Million Pounds</i>	<i>Million Pounds</i>	<i>Percent</i>
Jan	9,135	9,239	1,708	1,727	15,605	15,952	2.2
Feb	9,136	9,251	1,567	1,637	14,321	15,145	5.8
Mar	9,142	9,258	1,765	1,776	16,132	16,444	1.9
Apr	9,132	9,268	1,726	1,737	15,763	16,098	2.1
May	9,138	9,277	1,771	1,797	16,180	16,671	3.0
Jun	9,144	9,277	1,692	1,715	15,476	15,914	2.8
Jul	9,153	9,285	1,717	1,720	15,714	15,970	1.6
Aug	9,159	9,279	1,695	1,698	15,525	15,757	1.5
Sep	9,166	9,269	1,622	1,630	14,871	15,108	1.6
Oct	9,181	9,272	1,674	1,682	15,370	15,595	1.5
Nov	9,196	9,284	1,633	1,636	15,013	15,191	1.2
Dec	9,217	9,292	1,696	1,706	15,632	15,854	1.4
Annual	9,158	9,271	20,267	20,462	185,602	189,699	2.2

<sup>1</sup> 2008 revised.

<sup>2</sup> Includes dry cows, excludes heifers not yet fresh.

<sup>3</sup> Excludes milk sucked by calves.

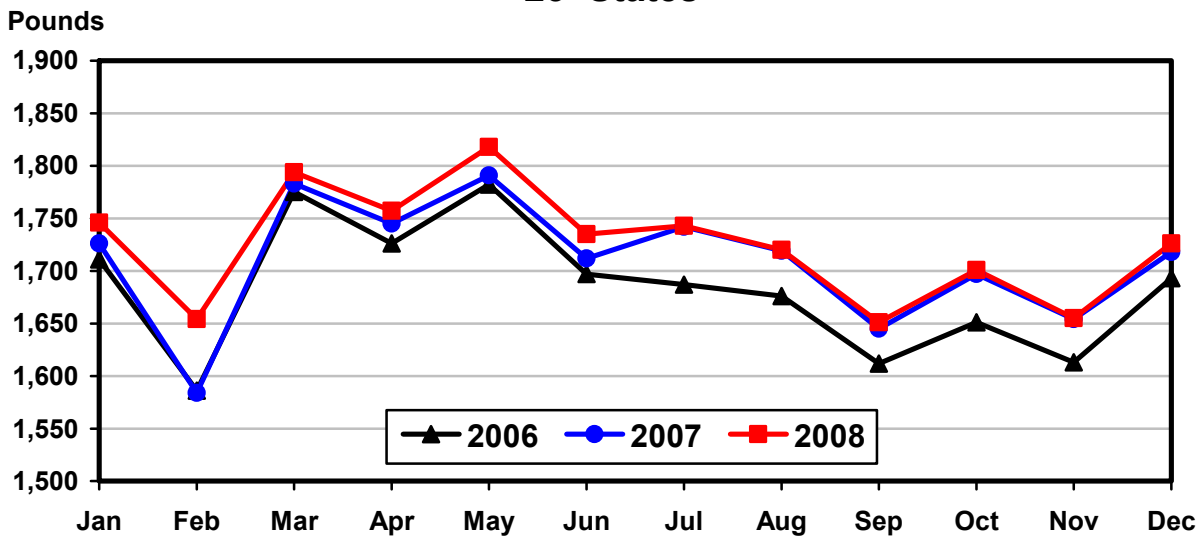
**Milk Cows and Production: By State, December 2007-2008**

State	Milk Cows <sup>1</sup>		Milk Per Cow <sup>2</sup>		Milk Production <sup>2</sup>		
	2007	2008	2007	2008	2007	2008	Change From 2007
	<i>1,000 Head</i>	<i>1,000 Head</i>	<i>Pounds</i>	<i>Pounds</i>	<i>Million Pounds</i>	<i>Million Pounds</i>	<i>Percent</i>
AZ	185	188	1,925	2,000	356	376	5.6
CA	1,835	1,844	1,885	1,860	3,459	3,430	-0.8
CO	120	130	1,965	1,940	236	252	6.8
FL	124	118	1,360	1,490	169	176	4.1
ID	530	554	1,870	1,820	991	1,008	1.7
IL	103	102	1,580	1,580	163	161	-1.2
IN	166	167	1,705	1,650	283	276	-2.5
IA	215	215	1,665	1,690	358	363	1.4
KS	109	121	1,650	1,785	180	216	20.0
KY	90	87	1,145	1,180	103	103	
MI	344	353	1,895	1,820	652	642	-1.5
MN	463	465	1,580	1,610	732	749	2.3
MO	110	109	1,210	1,270	133	138	3.8
NM	339	334	1,835	1,975	622	660	6.1
NY	626	625	1,620	1,620	1,014	1,013	-0.1
OH	278	276	1,500	1,510	417	417	
OR	115	115	1,515	1,590	174	183	5.2
PA	550	548	1,620	1,580	891	866	-2.8
TX	355	393	1,825	1,875	648	737	13.7
VT	140	139	1,545	1,525	216	212	-1.9
VA	99	97	1,495	1,495	148	145	-2.0
WA	243	244	1,930	1,900	469	464	-1.1
WI	1,250	1,255	1,600	1,630	2,000	2,046	2.3
23-State Total	8,389	8,479	1,718	1,726	14,414	14,633	1.5

<sup>1</sup> Includes dry cows, excludes heifers not yet fresh.

<sup>2</sup> Excludes milk sucked by calves.

**Monthly Milk per Cow  
23 States**



**Milk Cows and Production: By State, November 2007-2008 <sup>1</sup>**

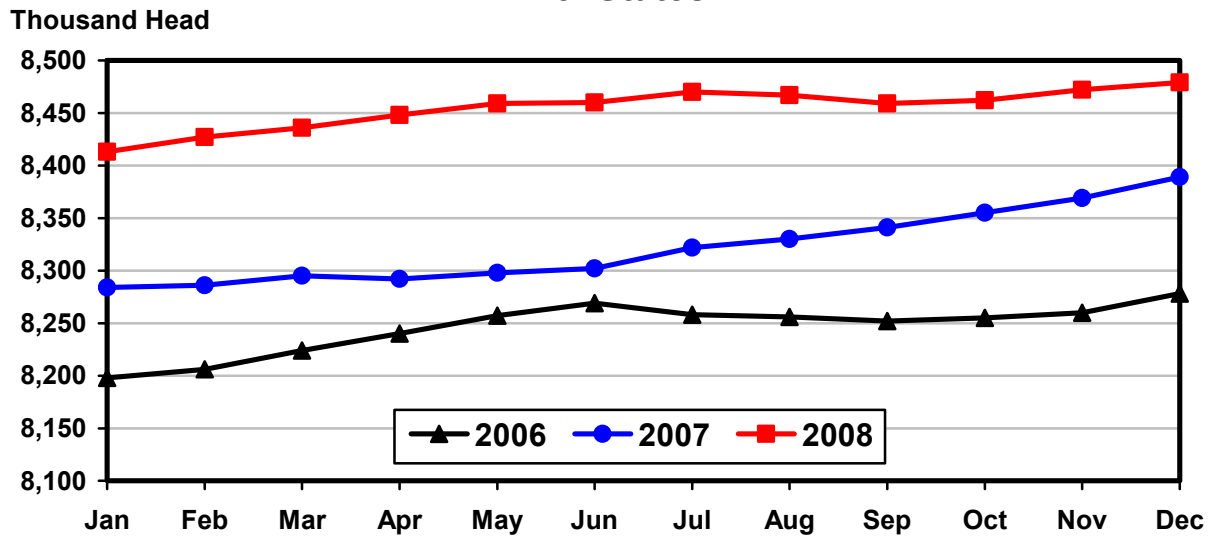
State	Milk Cows <sup>2</sup>		Milk per Cow <sup>3</sup>		Milk Production <sup>3</sup>		Change From 2007
	2007	2008	2007	2008	2007	2008	
	<i>1,000 Head</i>	<i>1,000 Head</i>	<i>Pounds</i>	<i>Pounds</i>	<i>Million Pounds</i>	<i>Million Pounds</i>	<i>Percent</i>
AZ	185	187	1,830	1,850	339	346	2.1
CA	1,830	1,843	1,810	1,795	3,312	3,308	-0.1
CO	120	130	1,900	1,845	228	240	5.3
FL	125	119	1,200	1,320	150	157	4.7
ID	525	554	1,810	1,770	950	981	3.3
IL	103	102	1,470	1,470	151	150	-0.7
IN	166	167	1,650	1,580	274	264	-3.6
IA	215	215	1,590	1,630	342	350	2.3
KS	108	118	1,640	1,720	177	203	14.7
KY	88	87	1,100	1,100	97	96	-1.0
MI	343	352	1,825	1,755	626	618	-1.3
MN	463	465	1,500	1,530	695	711	2.3
MO	109	110	1,190	1,175	130	129	-0.8
NM	337	333	1,780	1,900	600	633	5.5
NY	626	624	1,575	1,580	986	986	
OH	277	278	1,430	1,450	396	403	1.8
OR	115	115	1,490	1,560	171	179	4.7
PA	550	548	1,580	1,510	869	827	-4.8
TX	351	390	1,760	1,765	618	688	11.3
VT	140	139	1,465	1,445	205	201	-2.0
VA	100	97	1,400	1,410	140	137	-2.1
WA	244	245	1,850	1,840	451	451	
WI	1,249	1,254	1,550	1,565	1,936	1,963	1.4
23-State Total	8,369	8,472	1,654	1,655	13,843	14,021	1.3

<sup>1</sup> 2008 revised.

<sup>2</sup> Includes dry cows, excludes heifers not yet fresh.

<sup>3</sup> Excludes milk sucked by calves.

**Monthly Milk Cows  
23 States**



**Milk Cows and Production: By State and United States,  
Revised July-September, 2007-2008**

State	Jul-Sep Milk Cows <sup>1</sup>		Jul-Sep Milk Production <sup>2</sup>		Change From 2007
	2007	2008	2007	2008	
	<i>1,000 Head</i>	<i>1,000 Head</i>	<i>Million Pounds</i>	<i>Million Pounds</i>	<i>Percent</i>
AL	13.0	12.0	40	38	-5.0
AK	0.6	0.6	2.5	1.7	-32.0
AZ	181	184	968	977	0.9
AR	17.0	14.5	49	44	-10.2
CA	1,819	1,843	10,158	10,090	-0.7
CO	119	130	702	744	6.0
CT	19.0	19.0	89	88	-1.1
DE	6.5	6.5	26.0	25.0	-3.8
FL	126	120	472	454	-3.8
GA	77	75	312	305	-2.2
HI	2.6	1.6	7.4	4.4	-40.5
ID	519	555	3,020	3,219	6.6
IL	103	102	460	448	-2.6
IN	166	166	832	797	-4.2
IA	215	215	1,059	1,064	0.5
KS	108	113	526	592	12.5
KY	88	88	285	272	-4.6
LA	28	26	71	67	-5.6
ME	33	33	151	154	2.0
MD	57	56	249	242	-2.8
MA	14.5	14.5	63	64	1.6
MI	338	349	1,919	1,922	0.2
MN	463	465	2,137	2,163	1.2
MS	21	20	68	62	-8.8
MO	109	111	386	376	-2.6
MT	17.0	17.0	82	80	-2.4
NE	58	59	260	272	4.6
NV	27	27	138	142	2.9
NH	14.5	15.0	72	73	1.4
NJ	10.0	10.0	41	39	-4.9
NM	335	337	1,846	1,960	6.2
NY	626	626	3,041	3,111	2.3
NC	47	46	216	207	-4.2
ND	28	27	108	104	-3.7
OH	276	280	1,223	1,263	3.3
OK	68	63	282	261	-7.4
OR	114	114	559	562	0.5
PA	550	547	2,625	2,599	-1.0
RI	1.1	1.1	4.6	4.9	6.5
SC	18.0	18.0	71	70	-1.4
SD	85	91	410	458	11.7
TN	62	58	224	212	-5.4
TX	348	384	1,751	2,048	17.0
UT	85	85	448	447	-0.2
VT	139	140	635	641	0.9
VA	100	97	419	407	-2.9
WA	239	245	1,409	1,442	2.3
WV	13.0	12.0	49	45	-8.2
WI	1,248	1,252	6,109	6,137	0.5
WY	7.0	7.0	35.0	36.6	4.6
US <sup>3</sup>	9,159	9,278	46,110	46,835	1.6

<sup>1</sup> Includes dry cows, excludes heifers not yet fresh.

<sup>2</sup> Excludes milk sucked by calves.

<sup>3</sup> May not add due to rounding.

**Milk Cows and Production: By State and United States,  
Preliminary October-December, 2007-2008**

State	Oct-Dec Milk Cows <sup>1</sup>		Oct-Dec Milk Production <sup>2</sup>		Change From 2007
	2007	2008	2007	2008	
	<i>1,000 Head</i>	<i>1,000 Head</i>	<i>Million Pounds</i>	<i>Million Pounds</i>	<i>Percent</i>
AL	13.0	12.0	45	42	-6.7
AK	0.6	0.6	1.8	1.6	-11.1
AZ	185	187	1,035	1,063	2.7
AR	17.0	14.0	50	43	-14.0
CA	1,830	1,842	10,186	10,124	-0.6
CO	120	130	696	738	6.0
CT	19.0	19.0	88	88	
DE	6.5	6.5	27.0	26.0	-3.7
FL	125	119	459	479	4.4
GA	77	75	318	325	2.2
HI	2.5	1.6	6.3	4.8	-23.8
ID	526	554	2,922	3,025	3.5
IL	103	102	467	463	-0.9
IN	166	167	837	810	-3.2
IA	215	215	1,050	1,076	2.5
KS	108	118	535	622	16.3
KY	88	87	297	295	-0.7
LA	27	25	76	69	-9.2
ME	33	33	147	149	1.4
MD	57	56	255	247	-3.1
MA	14.5	14.5	62	62	
MI	343	352	1,912	1,897	-0.8
MN	463	465	2,135	2,183	2.2
MS	21	19	72	63	-12.5
MO	109	110	393	397	1.0
MT	17.0	16.0	80	77	-3.8
NE	57	59	261	278	6.5
NV	27	27	138	147	6.5
NH	14.0	15.0	72	72	
NJ	10.0	10.0	41	38	-7.3
NM	338	334	1,844	1,934	4.9
NY	626	625	3,020	3,012	-0.3
NC	48	45	221	209	-5.4
ND	28	26	106	99	-6.6
OH	277	277	1,220	1,240	1.6
OK	67	63	271	261	-3.7
OR	115	115	521	548	5.2
PA	550	548	2,647	2,555	-3.5
RI	1.1	1.1	4.5	4.8	6.7
SC	18.0	17.0	75	71	-5.3
SD	86	93	413	466	12.8
TN	61	59	233	225	-3.4
TX	352	390	1,875	2,120	13.1
UT	85	85	435	440	1.1
VT	140	139	632	620	-1.9
VA	100	97	429	421	-1.9
WA	243	245	1,387	1,385	-0.1
WV	13.0	12.0	49	44	-10.2
WI	1,249	1,254	5,934	6,045	1.9
WY	7.0	7.0	34.7	36.0	3.7
US <sup>3</sup>	9,198	9,283	46,015	46,640	1.4

<sup>1</sup> Includes dry cows, excludes heifers not yet fresh.

<sup>2</sup> Excludes milk sucked by calves.

<sup>3</sup> May not add due to rounding.

## Reliability Statement

**Survey Procedures:** Primary data used to determine these estimates were obtained from a sample of producers. Individual States maintain a list of all known milk producers and information on the size of their herd. States use all known sources of producers to ensure that their lists are as complete as possible. Generally, all large producers and a sample of small producers are included in the survey. Questionnaires are mailed to producers near the end of the month to obtain data for the first day of the month. Additional reports are obtained by telephone, as needed, to supplement the mail response. Where feasible, States utilize state and federal administrative data, rather than conduct a monthly or quarterly survey, to estimate milk production. This eliminates duplication of data gathering by different government agencies. Indications of milk cow inventory are also obtained in the January and July Cattle Surveys.

**Estimation Procedures:** State offices prepare these estimates by using a combination of survey indications, historic trends, and any available administrative data. Individual State estimates are reviewed by the Agricultural Statistics Board for reasonableness.

**Revision Policy:** Milk production, rate per cow, and number of cows are subject to revision the following month for monthly States or the following quarter for the quarterly States. Normally, Federal Market Order sales are the main basis for revisions. However, data for all orders are not available in time for this revision. Estimates are again subject to revisions in February each year based on additional administrative data. In the event that additional changes are necessary, a third revision is possible in February the following year. Estimates are again reviewed after data from the five-year Census of Agriculture are available. No revisions are made after that date.

**Reliability:** Since all operations with dairy animals are not included in the sample, survey estimates are subject to sampling variability. Survey results are also subject to non-sampling errors such as omissions, duplications, and mistakes in reporting, recording, and processing the data. The effects of these errors cannot be measured directly. They are minimized through rigid quality controls in the data collection process and through a careful review of all reported data for consistency and reasonableness.

To assist users in evaluating the reliability of the estimates in this report, the "Root Mean Square Error" is shown for selected items on the next page. The "Root Mean Square Error" is a statistical measure based on past performance and is computed using the differences between first and final estimates. The "Root Mean Square Error" for milk cow inventory estimates over the past 20 quarters is 0.1 percent. This means that chances are 2 out of 3 that the final estimate will not be above or below the current estimate of 9.28 million head by more than 0.1 percent. Chances are 9 out of 10 that the difference will not exceed 0.1 percent.

**Reliability of Quarterly Milk Production Estimates <sup>1</sup>**

Item	Root Mean Square Error	90% Confidence Level		Difference Between First and Latest Estimates			Quarters	
				Average	Smallest	Largest	First Above Latest	First Below Latest
				Million Pounds	Million Pounds	Million Pounds	Number	Number
Milk Production	<i>Percent</i> 0.2	<i>Percent</i> 0.4	<i>Million Pounds</i> 177	<i>Million Pounds</i> 69	<i>Million Pounds</i> 0	<i>Million Pounds</i> 228	<i>Number</i> 7	<i>Number</i> 12
All Milk Cows	<i>Percent</i> 0.1	<i>Percent</i> 0.1	<i>1,000 Head</i> 11	<i>1,000 Head</i> 5	<i>1,000 Head</i> 0	<i>1,000 Head</i> 14	<i>Number</i> 5	<i>Number</i> 12

<sup>1</sup> Based on the U.S. total for the past 20 quarters.

**Information Contacts**

Listed below are the commodity specialists in the Livestock Branch of the National Agricultural Statistics Service to contact for additional information.

Dan Kerestes, Chief, Livestock Branch ..... (202) 720-3570

**Livestock Section**

Scott Hollis, Head, Livestock Section ..... (202) 690-2424  
 Jim Collom - Dairy Products ..... (202) 690-3236  
 Joe Gaynor - Dairy Products Prices ..... (202) 690-2168  
 Jason Hardegee - Cattle, Cattle on Feed ..... (202) 720-3040  
 Benita Hodge - Livestock Slaughter ..... (515) 284-4340  
 Everett Olbert - Sheep and Goats ..... (202) 720-4751  
 Mike Miller - Milk Production and Milk Cows ..... (202) 720-3278  
 Nick Streff - Hogs and Pigs ..... (202) 720-3106



## ACCESS TO REPORTS!!

---

For your convenience, there are several ways to obtain NASS reports, data products, and services:

### INTERNET ACCESS

All NASS reports are available free of charge on the worldwide Internet. For access, connect to the Internet and go to the NASS Home Page at: [www.nass.usda.gov](http://www.nass.usda.gov).

### E-MAIL SUBSCRIPTION

All NASS reports are available by subscription free of charge direct to your e-mail address. Starting with the NASS Home Page at [www.nass.usda.gov](http://www.nass.usda.gov), under the right navigation, *Receive reports by Email*, click on **National** or **State**. Follow the instructions on the screen.

-----

### PRINTED REPORTS OR DATA PRODUCTS

**CALL OUR TOLL-FREE ORDER DESK: 800-999-6779 (U.S. and Canada)**  
**Other areas, please call 703-605-6220      FAX: 703-605-6900**  
**(Visa, MasterCard, check, or money order acceptable for payment.)**

-----

### ASSISTANCE

For **assistance** with general agricultural statistics or further information about NASS or its products or services, contact the **Agricultural Statistics Hotline** at **800-727-9540**, 7:30 a.m. to 4:00 p.m. ET, or e-mail: [nass@nass.usda.gov](mailto:nass@nass.usda.gov).

The U.S. Department of Agriculture (USDA) prohibits discrimination in all its programs and activities on the basis of race, color, national origin, age, disability, and where applicable, sex, marital status, familial status, parental status, religion, sexual orientation, genetic information, political beliefs, reprisal, or because all or a part of an individual's income is derived from any public assistance program. (Not all prohibited bases apply to all programs.) Persons with disabilities who require alternative means for communication of program information (Braille, large print, audiotape, etc.) should contact USDA's TARGET Center at (202) 720-2600 (voice and TDD).

To file a complaint of discrimination, write to USDA, Director, Office of Civil Rights, 1400 Independence Avenue, S.W., Washington, D.C. 20250-9410, or call (800) 795-3272 (voice) or (202) 720-6382 (TDD). USDA is an equal opportunity provider and employer.



## **Global Agriculture & Rural America in Transition**

Food & Energy: Expectations & Realities

**February 26-27, 2009**

Crystal Gateway Marriott Hotel  
Arlington, Virginia

**[www.usda.gov/oce/forum](http://www.usda.gov/oce/forum)**

Early Bird Registration \$350 until January 23, 2009 \* \$375 after January 23

*Topical Sessions Will Address:*

- \*Commodity Markets
- \*Trade & Farm Policy
- \*Conservation
- \*Risk Management
- \*Food Prices
- \*Rural America
- \*Food Safety & Food Security
- \*Energy
- \*Biotechnology
- \*World Markets