

Milk Production

Released February 19, 2009, by the National Agricultural Statistics Service (NASS), Agricultural Statistics Board, U.S. Department of Agriculture. For information on *Milk Production* call Mike Miller at 202-720-3278, office hours 7:30 a.m. to 4:00 p.m. ET.

January Milk Production up 1.0 Percent

Milk production in the 23 major States during January totaled 14.9 billion pounds, up 1.0 percent from January 2008. December revised production at 14.7 billion pounds, was up 1.8 percent from December 2007. The December revision represented an increase of 44 million pounds or 0.3 percent from last month's preliminary production estimate.

Production per cow in the 23 major States averaged 1,746 pounds for January, 5 pounds above January 2008.

The number of milk cows on farms in the 23 major States was 8.51 million head, 58,000 head more than January 2008, and 12,000 head less than December 2008.

2008 Annual Milk Production up 2.3 Percent from 2007

The annual production of milk for the U.S. during 2008 was 190 billion pounds, 2.3 percent above 2007. Revisions to 2007 production increased the annual total 52 million pounds. Revised 2008 production was up 293 million pounds from last month's publication.

Production per cow in the U.S. averaged 20,396 pounds for 2008, 192 pounds above 2007. The average annual rate of milk production per cow has increased 14.8 percent from 1999.

The average number of milk cows on farms in the U.S. during 2008 was 9.32 million head, up 1.4 percent from 2007. The average number of milk cows was revised up 44,000 head for 2008.

Special Note

Included in this issue are monthly, quarterly, and annual revisions, by State, U.S., and Puerto Rico for 2007-2008.

This issue also contains the Number of Licensed Dairy Herds, by State, U.S., and Puerto Rico for 2007-2008.

Milk Cows and Production: By Quarter, United States, 2008-2009¹

Quarter	Milk Cows ²		Milk Per Cow ³		Milk Production ³		
	2008	2009	2008	2009	2008	2009	Change From 2008
	<i>1,000 Head</i>	<i>1,000 Head</i>	<i>Pounds</i>	<i>Pounds</i>	<i>Million Pounds</i>	<i>Million Pounds</i>	<i>Percent</i>
Jan-Mar	9,286		5,127		47,610		
Apr-Jun	9,315		5,236		48,774		
Jul-Sep	9,330		5,025		46,881		
Oct-Dec	9,330		5,008		46,727		
Annual	9,315		20,396		189,992		

¹ May not add due to rounding.

² Includes dry cows, excludes heifers not yet fresh.

³ Excludes milk sucked by calves.

Milk Cows and Production: By Month, 23 Selected States, 2008-2009¹

Month	Milk Cows ²		Milk Per Cow ³		Milk Production ³		
	2008	2009	2008	2009	2008	2009	Change from 2008
	<i>1,000 Head</i>	<i>1,000 Head</i>	<i>Pounds</i>	<i>Pounds</i>	<i>Million Pounds</i>	<i>Million Pounds</i>	<i>Percent</i>
Jan	8,451	8,509	1,741	1,746	14,714	14,855	1.0
Feb	8,463		1,651		13,975		
Mar	8,473		1,789		15,157		
Apr	8,489		1,752		14,869		
May	8,503		1,812		15,411		
Jun	8,506		1,729		14,706		
Jul	8,520		1,735		14,785		
Aug	8,518		1,710		14,563		
Sep	8,512		1,643		13,981		
Oct	8,514		1,693		14,415		
Nov	8,521		1,648		14,042		
Dec	8,521		1,722		14,677		
Annual	8,499		20,625		175,295		

¹ 2008 previous month revised.

² Includes dry cows, excludes heifers not yet fresh.

³ Excludes milk sucked by calves.

Estimated Milk Cows and Production: By Month, United States, 2008-2009¹

Month	Milk Cows ²		Milk Per Cow ³		Milk Production ³		
	2008	2009	2008	2009	2008	2009	Change From 2008
	<i>1,000 Head</i>	<i>1,000 Head</i>	<i>Pounds</i>	<i>Pounds</i>	<i>Million Pounds</i>	<i>Million Pounds</i>	<i>Percent</i>
Jan	9,276	9,320	1,722	1,727	15,976	16,100	0.8
Feb	9,287		1,634		15,176		
Mar	9,295		1,771		16,458		
Apr	9,307		1,733		16,125		
May	9,318		1,793		16,707		
Jun	9,321		1,710		15,942		
Jul	9,335		1,713		15,995		
Aug	9,331		1,689		15,757		
Sep	9,323		1,623		15,129		
Oct	9,324		1,675		15,615		
Nov	9,333		1,630		15,212		
Dec	9,334		1,703		15,900		
Annual	9,315		20,396		189,992		

¹ 2008 revised.

² Includes dry cows, excludes heifers not yet fresh.

³ Excludes milk sucked by calves.

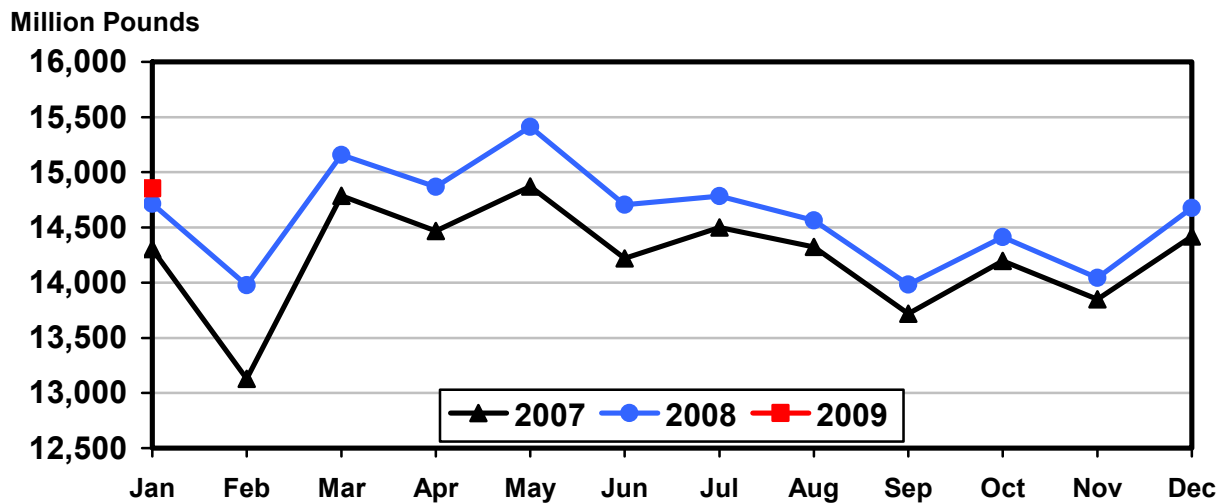
Milk Cows and Production: By State, January 2008-2009

State	Milk Cows ¹		Milk Per Cow ²		Milk Production ²		
	2008	2009	2008	2009	2008	2009	Change From 2008
	<i>1,000 Head</i>	<i>1,000 Head</i>	<i>Pounds</i>	<i>Pounds</i>	<i>Million Pounds</i>	<i>Million Pounds</i>	<i>Percent</i>
AZ	185	189	2,020	1,980	374	374	
CA	1,838	1,831	1,900	1,880	3,492	3,442	-1.4
CO	126	129	1,880	1,940	237	250	5.5
FL	120	118	1,550	1,620	186	191	2.7
ID	534	554	1,870	1,820	999	1,008	0.9
IL	103	102	1,615	1,610	166	164	-1.2
IN	167	167	1,710	1,695	286	283	-1.0
IA	216	215	1,680	1,700	363	366	0.8
KS	115	125	1,720	1,750	198	219	10.6
KY	91	86	1,185	1,200	108	103	-4.6
MI	344	354	1,910	1,875	657	664	1.1
MN	463	468	1,610	1,630	745	763	2.4
MO	110	108	1,225	1,270	135	137	1.5
NM	336	334	1,900	2,015	638	673	5.5
NY	626	624	1,660	1,670	1,039	1,042	0.3
OH	278	277	1,540	1,560	428	432	0.9
OR	114	115	1,685	1,680	192	193	0.5
PA	552	550	1,630	1,630	900	897	-0.3
TX	402	430	1,685	1,780	677	765	13.0
VT	140	138	1,585	1,530	222	211	-5.0
VA	98	97	1,540	1,545	151	150	-0.7
WA	243	243	1,965	1,910	477	464	-2.7
WI	1,250	1,255	1,635	1,645	2,044	2,064	1.0
23-State Total	8,451	8,509	1,741	1,746	14,714	14,855	1.0

¹ Includes dry cows, excludes heifers not yet fresh.

² Excludes milk sucked by calves.

Monthly Milk Production 23 States



Milk Cows and Production: By State, December 2007-2008 ¹

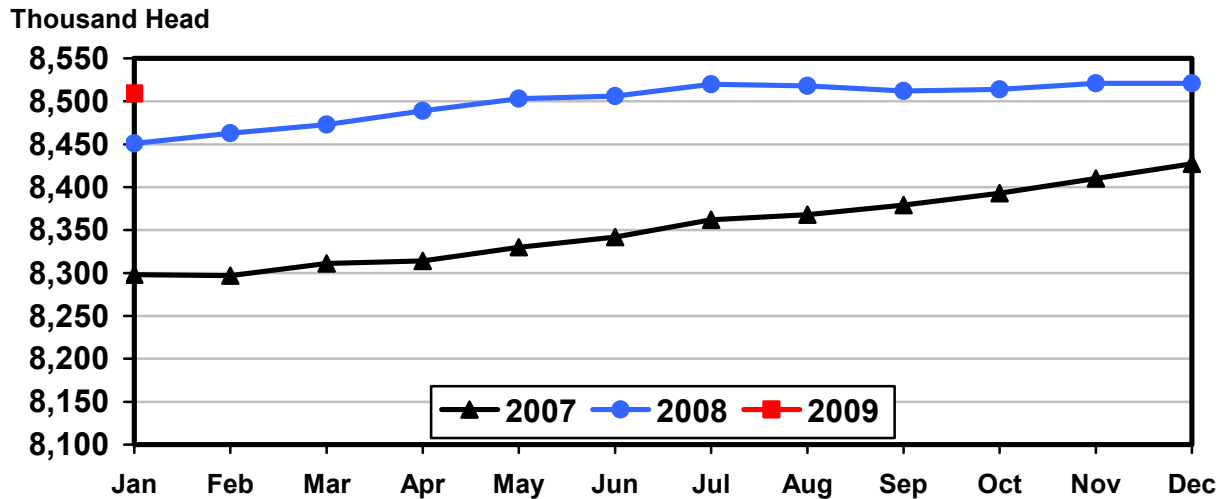
State	Milk Cows ²		Milk per Cow ³		Milk Production ³		
	2007	2008	2007	2008	2007	2008	Change From 2007
	<i>1,000 Head</i>	<i>1,000 Head</i>	<i>Pounds</i>	<i>Pounds</i>	<i>Million Pounds</i>	<i>Million Pounds</i>	<i>Percent</i>
AZ	185	190	1,925	1,980	356	376	5.6
CA	1,835	1,840	1,885	1,870	3,459	3,441	-0.5
CO	125	130	1,895	1,940	237	252	6.3
FL	120	118	1,410	1,520	169	179	5.9
ID	530	554	1,870	1,820	991	1,008	1.7
IL	103	102	1,580	1,580	163	161	-1.2
IN	166	167	1,705	1,650	283	276	-2.5
IA	215	215	1,665	1,690	358	363	1.4
KS	115	124	1,650	1,740	190	216	13.7
KY	90	87	1,145	1,140	103	99	-3.9
MI	344	354	1,885	1,850	648	655	1.1
MN	463	467	1,580	1,605	732	750	2.5
MO	110	109	1,210	1,270	133	138	3.8
NM	330	335	1,880	1,975	620	662	6.8
NY	626	625	1,620	1,640	1,014	1,025	1.1
OH	274	276	1,520	1,510	416	417	0.2
OR	115	115	1,515	1,590	174	183	5.2
PA	550	548	1,620	1,580	891	866	-2.8
TX	399	430	1,625	1,715	648	737	13.7
VT	140	139	1,545	1,525	216	212	-1.9
VA	99	97	1,495	1,495	148	145	-2.0
WA	243	244	1,930	1,900	469	464	-1.1
WI	1,250	1,255	1,600	1,635	2,000	2,052	2.6
23-State Total	8,427	8,521	1,711	1,722	14,418	14,677	1.8

¹ 2008 revised.

² Includes dry cows, excludes heifers not yet fresh.

³ Excludes milk sucked by calves.

Monthly Milk Cows 23 States



Milk Cows and Production: United States, 1999-2008 ¹

Year	Milk Cows ² <i>1,000 Head</i>	Production per Cow ³		Milk Production ³
		Milk <i>Pounds</i>	Total <i>Million Pounds</i>	
1999	9,153	17,763	162,589	
2000	9,199	18,197	167,393	
2001	9,103	18,162	165,332	
2002	9,139	18,608	170,063	
2003	9,081	18,759	170,348	
2004	9,010	18,960	170,832	
2005	9,050	19,550	176,931	
2006	9,137	19,895	181,782	
2007	9,189	20,204	185,654	
2008	9,315	20,396	189,992	

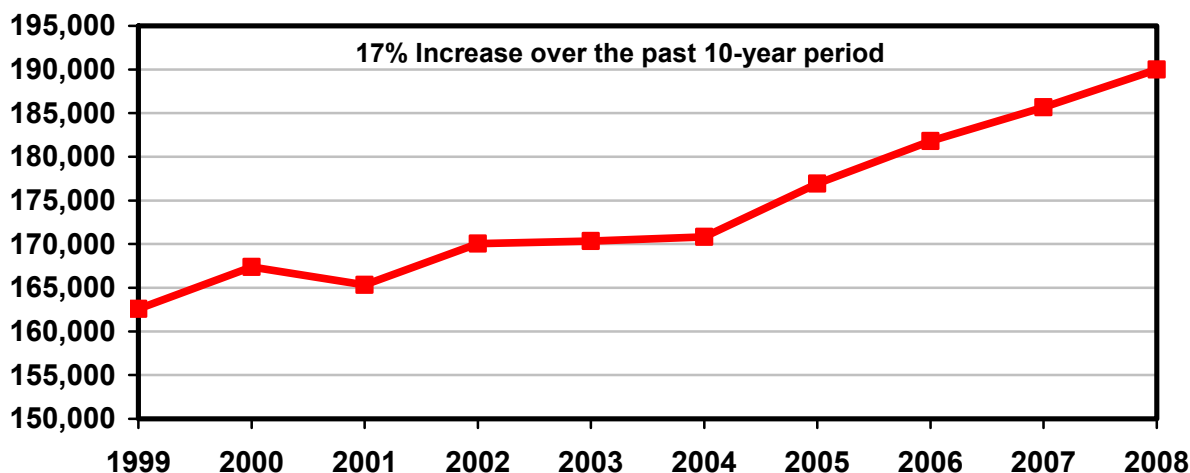
¹ May not add due to rounding.

² Average number during year, excluding heifers not yet fresh.

³ Excludes milk sucked by calves.

Milk Production 1999-2008 United States

Million Pounds



Milk Cows and Production: By State, United States, and Puerto Rico, 2007-2008

State	Milk Cows ¹		Milk Per Cow ²		Milk Production ²		Change From 2007
	2007	2008	2007	2008	2007	2008	
	<i>1,000 Head</i>	<i>1,000 Head</i>	<i>Pounds</i>	<i>Pounds</i>	<i>Million Pounds</i>	<i>Million Pounds</i>	<i>Percent</i>
AL	13	12	15,154	15,333	197	184	-6.6
AK	0.6	0.6	14,667	12,000	8.8	7.2	-18.2
AZ	181	186	23,260	23,382	4,210	4,349	3.3
AR	17	15	12,941	13,000	220	195	-11.4
CA	1,813	1,844	22,440	22,344	40,683	41,203	1.3
CO	118	128	22,932	22,930	2,706	2,935	8.5
CT	19	19	19,211	19,105	365	363	-0.5
DE	6.8	6.5	16,618	16,923	113.0	110.0	-2.7
FL	125	120	16,832	17,167	2,104	2,060	-2.1
GA	77	76	18,169	17,829	1,399	1,355	-3.1
HI	2.9	1.7	12,241	10,882	35.5	18.5	-47.9
ID	513	549	22,513	22,432	11,549	12,315	6.6
IL	103	102	18,612	18,569	1,917	1,894	-1.2
IN	166	167	20,307	19,707	3,371	3,291	-2.4
IA	213	216	20,085	19,995	4,278	4,319	1.0
KS	110	117	19,882	20,641	2,187	2,415	10.4
KY	90	90	13,889	13,444	1,250	1,210	-3.2
LA	29	26	12,034	12,269	349	319	-8.6
ME	33	33	17,788	18,273	587	603	2.7
MD	58	56	18,121	18,375	1,051	1,029	-2.1
MA	15	15	17,000	16,933	255	254	-0.4
MI	335	350	22,761	22,180	7,625	7,763	1.8
MN	460	464	18,817	18,927	8,656	8,782	1.5
MS	21	20	15,429	14,550	324	291	-10.2
MO	112	110	14,982	14,682	1,678	1,615	-3.8
MT	18	17	18,500	18,412	333	313	-6.0
NE	59	58	18,220	18,621	1,075	1,080	0.5
NV	27	27	20,481	20,704	553	559	1.1
NH	15	15	19,333	19,933	290	299	3.1
NJ	10	10	16,800	16,500	168	165	-1.8
NM	332	338	21,958	23,269	7,290	7,865	7.9
NY	627	626	19,303	19,859	12,103	12,432	2.7
NC	48	47	19,188	18,979	921	892	-3.1
ND	29	26	15,310	16,077	444	418	-5.9
OH	275	280	18,109	18,321	4,980	5,130	3.0
OK	69	64	16,580	16,672	1,144	1,067	-6.7
OR	115	114	19,417	19,772	2,233	2,254	0.9
PA	550	549	19,422	19,262	10,682	10,575	-1.0
RI	1.1	1.1	16,455	18,091	18.1	19.9	9.9
SC	18	18	17,889	17,722	322	319	-0.9
SD	85	90	19,306	19,956	1,641	1,796	9.4
TN	63	59	15,857	16,068	999	948	-5.1
TX	389	418	18,982	20,134	7,384	8,416	14.0
UT	85	85	20,376	20,894	1,732	1,776	2.5
VT	140	140	18,079	18,414	2,531	2,578	1.9
VA	100	98	17,530	17,612	1,753	1,726	-1.5
WA	238	244	23,239	23,344	5,531	5,696	3.0
WV	13	12	15,000	15,083	195	181	-7.2
WI	1,247	1,252	19,310	19,546	24,080	24,472	1.6
WY	7.1	7.0	18,831	19,386	133.7	135.7	1.5
US ³	9,189	9,315	20,204	20,396	185,654	189,992	2.3
PR ⁴	89	86	8,303	8,012	739	689	-6.8

¹ Average number during year, excluding heifers not yet fresh.

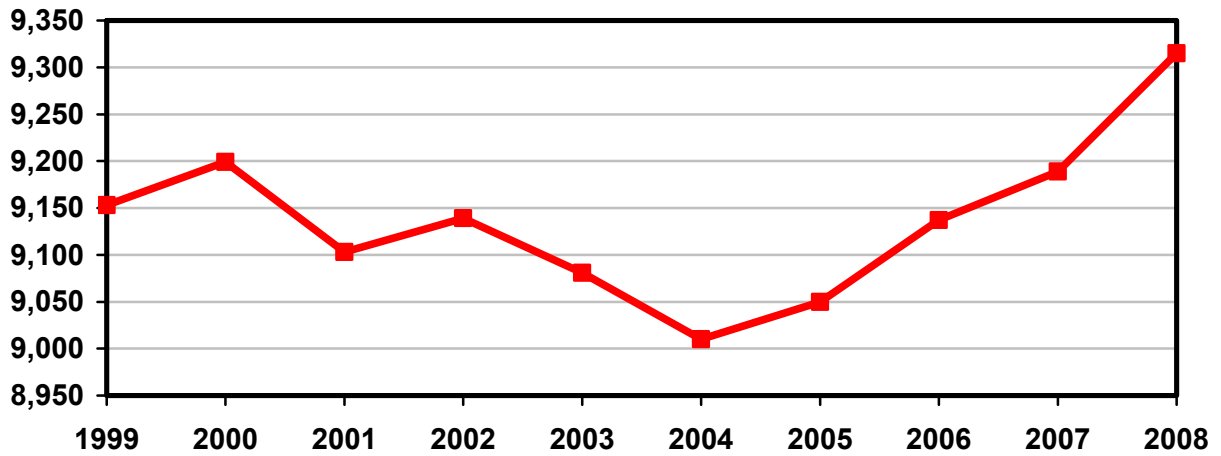
² Excludes milk sucked by calves.

³ May not add due to rounding.

⁴ Puerto Rico is not included in the U.S. total.

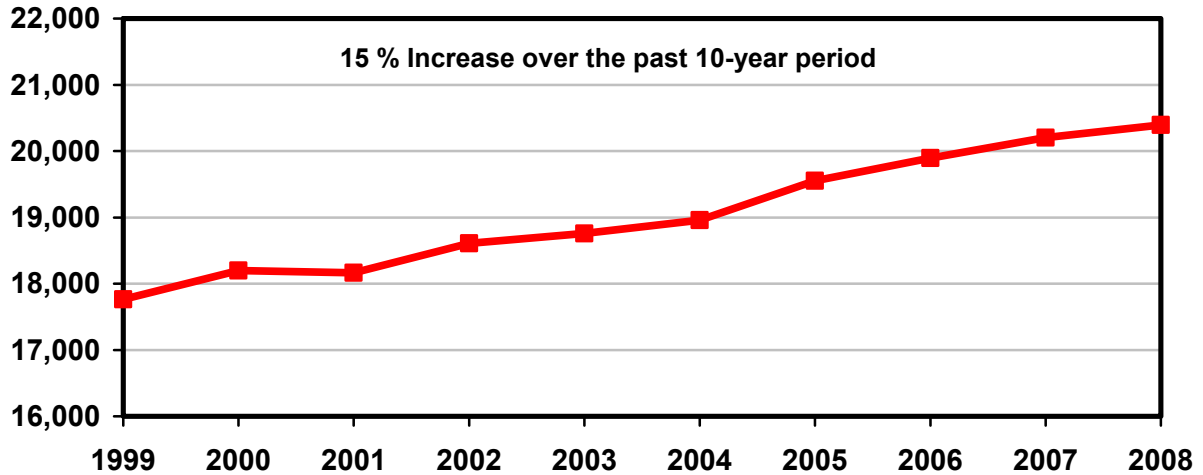
Milk Cows 1999-2008 United States

Thousand Head



Rate per Cow 1999-2008 United States

Pounds



Milk Cows: Number by Month, State, 23 State, and United States, 2007¹

State	Jan	Feb	Mar	Apr	May	Jun	
	<i>1,000 Head</i>	<i>1,000 Head</i>	<i>1,000 Head</i>	<i>1,000 Head</i>	<i>1,000 Head</i>	<i>1,000 Head</i>	
AZ	175	175	179	182	182	182	
CA	1,792	1,795	1,799	1,801	1,806	1,811	
CO	115	115	115	115	116	118	
FL	130	130	129	128	127	126	
ID	502	504	504	503	506	508	
IL	103	103	103	103	103	103	
IN	165	165	167	168	167	167	
IA	210	211	211	211	212	214	
KS	110	110	110	110	109	109	
KY	93	93	93	92	91	90	
MI	329	328	329	331	332	334	
MN	455	455	455	455	458	460	
MO	115	115	115	114	114	112	
NM	337	330	330	330	334	334	
NY	628	628	628	627	626	626	
OH	275	275	276	276	276	276	
OR	115	115	115	115	115	114	
PA	549	548	550	550	549	549	
TX	380	381	382	384	387	389	
VT	140	140	140	140	140	139	
VA	100	100	100	100	100	100	
WA	235	235	235	233	233	234	
WI	1,245	1,246	1,246	1,246	1,247	1,247	
23-Sts	8,298	8,297	8,311	8,314	8,330	8,342	
US ³	9,148	9,147	9,160	9,154	9,171	9,184	
	Jul	Aug	Sep	Oct	Nov	Dec	Annual Avg. ²
AZ	181	181	182	184	185	185	181
CA	1,816	1,819	1,822	1,826	1,830	1,835	1,813
CO	119	119	120	121	122	125	118
FL	125	124	123	121	120	120	125
ID	516	520	521	522	525	530	513
IL	103	103	103	103	103	103	103
IN	167	166	166	166	166	166	166
IA	215	215	215	215	215	215	213
KS	108	108	109	111	113	115	110
KY	89	88	88	87	88	90	90
MI	336	338	339	341	343	344	335
MN	463	463	463	463	463	463	460
MO	110	109	109	109	109	110	112
NM	334	332	332	332	332	330	332
NY	626	625	626	626	626	626	627
OH	276	275	275	275	275	274	275
OR	114	114	115	114	115	115	115
PA	550	550	550	551	550	550	550
TX	391	392	393	395	397	399	389
VT	139	139	140	140	140	140	140
VA	100	100	100	100	100	99	100
WA	236	240	240	242	244	243	238
WI	1,248	1,248	1,248	1,249	1,249	1,250	1,247
23-Sts	8,362	8,368	8,379	8,393	8,410	8,427	8,353
US ³	9,193	9,197	9,204	9,219	9,236	9,254	9,189

¹ Includes dry cows, excludes heifers not yet fresh.

² Average based on monthly totals.

³ U.S. monthly estimates are derived by proportionally allocating the quarterly estimates using the 23-state monthly total.

Milk Cows: Number by Month, State, 23 State, and United States, 2008¹

State	Jan	Feb	Mar	Apr	May	Jun	
	<i>1,000 Head</i>	<i>1,000 Head</i>	<i>1,000 Head</i>	<i>1,000 Head</i>	<i>1,000 Head</i>	<i>1,000 Head</i>	
AZ	185	185	186	186	186	186	
CA	1,838	1,840	1,842	1,845	1,847	1,847	
CO	126	126	126	127	127	128	
FL	120	120	120	120	120	120	
ID	534	537	540	543	550	551	
IL	103	102	102	102	102	102	
IN	167	167	166	168	168	166	
IA	216	216	216	216	216	216	
KS	115	115	115	115	115	116	
KY	91	91	91	92	92	91	
MI	344	344	345	347	350	351	
MN	463	463	463	463	463	463	
MO	110	110	110	111	111	110	
NM	336	340	340	342	342	340	
NY	626	626	626	626	626	626	
OH	278	280	280	281	282	282	
OR	114	114	114	113	113	114	
PA	552	551	549	549	548	546	
TX	402	404	408	410	412	417	
VT	140	140	140	140	140	140	
VA	98	98	98	98	98	98	
WA	243	244	245	244	244	244	
WI	1,250	1,250	1,251	1,251	1,251	1,252	
23-Sts	8,451	8,463	8,473	8,489	8,503	8,506	
US ³	9,276	9,287	9,295	9,307	9,318	9,321	
	Jul	Aug	Sep	Oct	Nov	Dec	Annual Avg. ²
AZ	185	185	185	186	188	190	186
CA	1,847	1,846	1,845	1,845	1,845	1,840	1,844
CO	129	130	130	130	130	130	128
FL	120	120	120	119	119	118	120
ID	556	555	554	554	554	554	549
IL	102	102	102	102	102	102	102
IN	166	166	166	166	167	167	167
IA	215	215	215	215	215	215	216
KS	117	117	117	118	121	124	117
KY	90	88	87	87	87	87	90
MI	352	352	352	353	353	354	350
MN	465	465	465	466	467	467	464
MO	111	112	111	110	110	109	110
NM	340	337	336	334	334	335	338
NY	626	626	626	625	624	625	626
OH	281	280	279	278	277	276	280
OR	115	115	115	115	115	115	114
PA	546	548	548	549	548	548	549
TX	423	425	425	428	430	430	418
VT	140	140	139	139	139	139	140
VA	97	97	97	97	97	97	98
WA	245	245	245	245	245	244	244
WI	1,252	1,252	1,253	1,253	1,254	1,255	1,252
23-Sts	8,520	8,518	8,512	8,514	8,521	8,521	8,499
US ³	9,335	9,331	9,323	9,324	9,333	9,334	9,315

¹ Includes dry cows, excludes heifers not yet fresh.

² Average based on monthly totals.

³ U.S. monthly estimates are derived by proportionally allocating the quarterly estimates using the 23-state monthly total.

**Milk Produced per Cow: by Month,
State, 23 States, and United States, 2007¹**

State	Jan	Feb	Mar	Apr	May	Jun	
	<i>Pounds</i>	<i>Pounds</i>	<i>Pounds</i>	<i>Pounds</i>	<i>Pounds</i>	<i>Pounds</i>	
AZ	2,030	1,930	2,195	2,090	2,105	1,965	
CA	1,880	1,755	1,975	1,915	1,925	1,845	
CO	1,855	1,670	1,910	1,900	1,990	1,960	
FL	1,470	1,415	1,620	1,590	1,585	1,470	
ID	1,850	1,680	1,880	1,860	1,930	1,910	
IL	1,645	1,460	1,655	1,645	1,670	1,550	
IN	1,720	1,580	1,770	1,725	1,740	1,675	
IA	1,730	1,620	1,750	1,710	1,775	1,675	
KS	1,670	1,510	1,720	1,680	1,750	1,650	
KY	1,220	1,100	1,260	1,270	1,250	1,170	
MI	1,945	1,755	1,960	1,920	1,970	1,910	
MN	1,635	1,485	1,650	1,610	1,660	1,565	
MO	1,300	1,180	1,370	1,395	1,380	1,240	
NM	1,790	1,640	1,890	1,815	1,910	1,820	
NY	1,610	1,480	1,630	1,605	1,690	1,620	
OH	1,530	1,380	1,550	1,540	1,640	1,550	
OR	1,670	1,590	1,750	1,670	1,710	1,650	
PA	1,640	1,500	1,710	1,690	1,720	1,590	
TX	1,625	1,495	1,745	1,680	1,675	1,560	
VT	1,560	1,385	1,535	1,495	1,555	1,510	
VA	1,540	1,380	1,570	1,550	1,570	1,440	
WA	1,930	1,780	2,000	1,970	2,025	1,975	
WI	1,630	1,470	1,640	1,615	1,685	1,620	
23-Sts	1,724	1,582	1,779	1,740	1,785	1,705	
US ²	1,706	1,566	1,761	1,722	1,766	1,685	
	Jul	Aug	Sep	Oct	Nov	Dec	Annual Avg.
AZ	1,875	1,760	1,705	1,850	1,830	1,925	23,260
CA	1,900	1,900	1,785	1,870	1,810	1,885	22,440
CO	2,000	1,975	1,900	1,930	1,870	1,895	22,932
FL	1,400	1,230	1,170	1,160	1,240	1,410	16,832
ID	1,970	1,970	1,880	1,880	1,810	1,870	22,513
IL	1,550	1,480	1,440	1,490	1,470	1,580	18,612
IN	1,700	1,670	1,635	1,685	1,650	1,705	20,307
IA	1,700	1,640	1,580	1,630	1,590	1,665	20,085
KS	1,660	1,620	1,620	1,690	1,620	1,650	19,882
KY	1,150	1,035	1,040	1,115	1,100	1,145	13,889
MI	1,950	1,920	1,830	1,870	1,825	1,885	22,761
MN	1,575	1,555	1,485	1,530	1,500	1,580	18,817
MO	1,220	1,170	1,140	1,190	1,190	1,210	14,982
NM	1,850	1,860	1,810	1,870	1,805	1,880	21,958
NY	1,650	1,640	1,570	1,630	1,575	1,620	19,303
OH	1,530	1,475	1,435	1,490	1,440	1,520	18,109
OR	1,675	1,665	1,550	1,545	1,490	1,515	19,417
PA	1,610	1,610	1,550	1,610	1,580	1,620	19,422
TX	1,535	1,480	1,455	1,545	1,560	1,625	18,982
VT	1,555	1,540	1,465	1,510	1,465	1,545	18,079
VA	1,450	1,390	1,350	1,410	1,400	1,495	17,530
WA	2,000	2,000	1,905	1,930	1,850	1,930	23,239
WI	1,675	1,645	1,575	1,600	1,550	1,600	19,310
23-Sts	1,734	1,712	1,637	1,691	1,647	1,711	20,447
US ²	1,709	1,688	1,616	1,669	1,626	1,690	20,204

¹ Excludes milk sucked by calves.

² U.S. monthly estimates are derived by proportionally allocating the quarterly estimates using the 23-state monthly total.

**Milk Produced per Cow: by Month,
State, 23 States and United States, 2008¹**

State	Jan	Feb	Mar	Apr	May	Jun	
	<i>Pounds</i>	<i>Pounds</i>	<i>Pounds</i>	<i>Pounds</i>	<i>Pounds</i>	<i>Pounds</i>	
AZ	2,020	1,960	2,190	2,145	2,165	1,950	
CA	1,900	1,810	1,975	1,905	1,940	1,850	
CO	1,880	1,800	1,945	1,910	1,990	1,940	
FL	1,550	1,530	1,655	1,568	1,625	1,440	
ID	1,870	1,750	1,885	1,850	1,930	1,900	
IL	1,615	1,515	1,640	1,615	1,665	1,565	
IN	1,710	1,600	1,700	1,690	1,730	1,650	
IA	1,680	1,600	1,730	1,670	1,740	1,660	
KS	1,720	1,645	1,790	1,740	1,790	1,680	
KY	1,185	1,130	1,230	1,240	1,230	1,070	
MI	1,910	1,760	1,870	1,840	1,935	1,860	
MN	1,610	1,520	1,630	1,580	1,645	1,585	
MO	1,225	1,170	1,300	1,325	1,365	1,240	
NM	1,900	1,785	1,990	1,990	2,040	1,970	
NY	1,660	1,590	1,690	1,670	1,770	1,680	
OH	1,540	1,445	1,560	1,580	1,660	1,560	
OR	1,685	1,580	1,700	1,680	1,745	1,660	
PA	1,630	1,540	1,680	1,670	1,720	1,630	
TX	1,685	1,635	1,800	1,770	1,800	1,690	
VT	1,585	1,500	1,590	1,560	1,600	1,565	
VA	1,540	1,470	1,590	1,570	1,580	1,410	
WA	1,965	1,850	1,990	1,950	2,025	1,970	
WI	1,635	1,545	1,660	1,620	1,710	1,650	
23-Sts	1,741	1,651	1,789	1,752	1,812	1,729	
US ²	1,722	1,634	1,771	1,733	1,793	1,710	
	Jul	Aug	Sep	Oct	Nov	Dec	Annual Avg.
AZ	1,815	1,755	1,710	1,835	1,840	1,980	23,382
CA	1,850	1,840	1,775	1,835	1,795	1,870	22,344
CO	1,950	1,930	1,850	1,890	1,845	1,940	22,930
FL	1,375	1,240	1,160	1,225	1,320	1,520	17,167
ID	1,960	1,970	1,870	1,870	1,770	1,820	22,432
IL	1,520	1,455	1,425	1,490	1,470	1,580	18,569
IN	1,650	1,605	1,550	1,625	1,580	1,650	19,707
IA	1,660	1,660	1,630	1,690	1,630	1,690	19,995
KS	1,725	1,710	1,665	1,720	1,695	1,740	20,641
KY	1,030	1,030	1,010	1,100	1,100	1,140	13,444
MI	1,900	1,860	1,790	1,845	1,780	1,850	22,180
MN	1,595	1,565	1,490	1,555	1,525	1,605	18,927
MO	1,170	1,110	1,100	1,180	1,175	1,270	14,682
NM	1,990	1,920	1,880	1,920	1,900	1,975	23,269
NY	1,690	1,690	1,590	1,620	1,580	1,640	19,859
OH	1,550	1,520	1,450	1,510	1,460	1,510	18,321
OR	1,670	1,645	1,590	1,615	1,555	1,590	19,772
PA	1,630	1,590	1,530	1,570	1,510	1,580	19,262
TX	1,675	1,605	1,550	1,625	1,600	1,715	20,134
VT	1,585	1,535	1,470	1,490	1,455	1,525	18,414
VA	1,425	1,410	1,360	1,435	1,410	1,495	17,612
WA	2,000	1,990	1,900	1,920	1,840	1,900	23,344
WI	1,670	1,650	1,580	1,625	1,565	1,635	19,546
23-Sts	1,735	1,710	1,643	1,693	1,648	1,722	20,625
US ²	1,713	1,689	1,623	1,675	1,630	1,703	20,396

¹ Excludes milk sucked by calves.

² U.S. monthly estimates are derived by proportionally allocating the quarterly estimates using the 23-state monthly total.

**Milk Production: Total by Month, State,
23 States, and United States, 2007 ¹**

State	Jan	Feb	Mar	Apr	May	Jun	
	<i>Million Pounds</i>	<i>Million Pounds</i>	<i>Million Pounds</i>	<i>Million Pounds</i>	<i>Million Pounds</i>	<i>Million Pounds</i>	
AZ	355	338	393	380	383	358	
CA	3,369	3,150	3,553	3,449	3,477	3,341	
CO	213	192	220	219	231	231	
FL	191	184	209	204	201	185	
ID	929	847	948	936	977	970	
IL	169	150	170	169	172	160	
IN	284	261	296	290	291	280	
IA	363	342	369	361	376	358	
KS	184	166	189	185	191	180	
KY	113	102	117	117	114	105	
MI	640	576	645	636	654	638	
MN	744	676	751	733	760	720	
MO	150	136	158	159	157	139	
NM	603	541	624	599	638	608	
NY	1,011	929	1,024	1,006	1,058	1,014	
OH	421	380	428	425	453	428	
OR	192	183	201	192	197	188	
PA	900	822	941	930	944	873	
TX	618	570	667	645	648	607	
VT	218	194	215	209	218	210	
VA	154	138	157	155	157	144	
WA	454	418	470	459	472	462	
WI	2,029	1,832	2,043	2,012	2,101	2,020	
23-Sts	14,304	13,127	14,788	14,470	14,870	14,219	
US ³	15,607	14,323	16,133	15,765	16,194	15,479	
	Jul	Aug	Sep	Oct	Nov	Dec	Annual Total ²
AZ	339	319	310	340	339	356	4,210
CA	3,450	3,456	3,252	3,415	3,312	3,459	40,683
CO	238	235	228	234	228	237	2,706
FL	175	153	144	140	149	169	2,104
ID	1,017	1,024	979	981	950	991	11,549
IL	160	152	148	153	151	163	1,917
IN	284	277	271	280	274	283	3,371
IA	366	353	340	350	342	358	4,278
KS	179	175	177	188	183	190	2,187
KY	102	91	92	97	97	103	1,250
MI	655	649	620	638	626	648	7,625
MN	729	720	688	708	695	732	8,656
MO	134	128	124	130	130	133	1,678
NM	618	618	601	621	599	620	7,290
NY	1,033	1,025	983	1,020	986	1,014	12,103
OH	422	406	395	410	396	416	4,980
OR	191	190	178	176	171	174	2,233
PA	886	886	853	887	869	891	10,682
TX	600	580	572	610	619	648	7,384
VT	216	214	205	211	205	216	2,531
VA	145	139	135	141	140	148	1,753
WA	472	480	457	467	451	469	5,531
WI	2,090	2,053	1,966	1,998	1,936	2,000	24,080
23-Sts	14,501	14,323	13,718	14,195	13,848	14,418	170,781
US ³	15,715	15,525	14,871	15,391	15,016	15,635	185,654

¹ Excludes milk sucked by calves.

² Total milk production for year.

³ U.S. monthly estimates are derived by proportionally allocating the quarterly estimates using the 23-state monthly total.

**Milk Production: Total by Month, State,
23 States, and United States, 2008¹**

State	Jan	Feb	Mar	Apr	May	Jun	
	<i>Million Pounds</i>	<i>Million Pounds</i>	<i>Million Pounds</i>	<i>Million Pounds</i>	<i>Million Pounds</i>	<i>Million Pounds</i>	
AZ	374	363	407	399	403	363	
CA	3,492	3,330	3,638	3,515	3,583	3,417	
CO	237	227	245	243	253	248	
FL	186	184	199	188	195	173	
ID	999	940	1,018	1,005	1,062	1,047	
IL	166	155	167	165	170	160	
IN	286	267	282	284	291	274	
IA	363	346	374	361	376	359	
KS	198	189	206	200	206	195	
KY	108	103	112	114	113	97	
MI	657	605	645	638	677	653	
MN	745	704	755	732	762	734	
MO	135	129	143	147	152	136	
NM	638	607	677	681	698	670	
NY	1,039	995	1,058	1,045	1,108	1,052	
OH	428	405	437	444	468	440	
OR	192	180	194	190	197	189	
PA	900	849	922	917	943	890	
TX	677	661	734	726	742	705	
VT	222	210	223	218	224	219	
VA	151	144	156	154	155	138	
WA	477	451	488	476	494	481	
WI	2,044	1,931	2,077	2,027	2,139	2,066	
23-Sts	14,714	13,975	15,157	14,869	15,411	14,706	
US ³	15,976	15,176	16,458	16,125	16,707	15,942	
	Jul	Aug	Sep	Oct	Nov	Dec	Annual Total ²
AZ	336	325	316	341	346	376	4,349
CA	3,417	3,397	3,275	3,386	3,312	3,441	41,203
CO	252	251	241	246	240	252	2,935
FL	165	149	139	146	157	179	2,060
ID	1,090	1,093	1,036	1,036	981	1,008	12,315
IL	155	148	145	152	150	161	1,894
IN	274	266	257	270	264	276	3,291
IA	357	357	350	363	350	363	4,319
KS	202	200	195	203	205	216	2,415
KY	93	91	88	96	96	99	1,210
MI	669	655	630	651	628	655	7,763
MN	742	728	693	725	712	750	8,782
MO	130	124	122	130	129	138	1,615
NM	677	647	632	641	635	662	7,865
NY	1,058	1,058	995	1,013	986	1,025	12,432
OH	436	426	405	420	404	417	5,130
OR	192	189	183	186	179	183	2,254
PA	890	871	838	862	827	866	10,575
TX	709	682	659	696	688	737	8,416
VT	222	215	204	207	202	212	2,578
VA	138	137	132	139	137	145	1,726
WA	490	488	466	470	451	464	5,696
WI	2,091	2,066	1,980	2,036	1,963	2,052	24,472
23-Sts	14,785	14,563	13,981	14,415	14,042	14,677	175,295
US ³	15,995	15,757	15,129	15,615	15,212	15,900	189,992

¹ Excludes milk sucked by calves.

² Total milk production for year.

³ U.S. monthly estimates are derived by proportionally allocating the quarterly estimates using the 23-state monthly total.

**Milk Cows and Production: Number and Milk Produced
by Quarter, State, and United States, 2007**

State	Milk Cows ¹				Milk Production ²			
	Jan-Mar	Apr-Jun	Jul-Sep	Oct-Dec	Jan-Mar	Apr-Jun	Jul-Sep	Oct-Dec
	<i>1,000 Head</i>	<i>1,000 Head</i>	<i>1,000 Head</i>	<i>1,000 Head</i>	<i>Million Pounds</i>	<i>Million Pounds</i>	<i>Million Pounds</i>	<i>Million Pounds</i>
AL	13.0	13.0	13.0	13.0	58	54	40	45
AK	0.6	0.6	0.6	0.6	2.3	2.2	2.5	1.8
AZ	176	182	181	185	1,086	1,121	968	1,035
AR	18.0	17.5	17.0	17.0	61	60	49	50
CA	1,795	1,806	1,819	1,830	10,072	10,267	10,158	10,186
CO	115	116	119	123	625	681	701	699
CT	19.0	19.0	19.0	19.0	94	94	89	88
DE	7.0	7.0	6.5	6.5	30.0	30.0	26.0	27.0
FL	130	127	124	120	584	590	472	458
GA	77	77	77	77	381	388	312	318
HI	3.6	3.0	2.6	2.5	12.1	9.7	7.4	6.3
ID	503	506	519	526	2,724	2,883	3,020	2,922
IL	103	103	103	103	489	501	460	467
IN	166	167	166	166	841	861	832	837
IA	211	212	215	215	1,074	1,095	1,059	1,050
KS	110	109	108	113	539	556	531	561
KY	93	91	88	88	332	336	285	297
LA	30	29	28	27	105	97	71	76
ME	32	32	33	33	141	148	151	147
MD	60	59	57	57	276	271	249	255
MA	15.0	15.0	14.5	14.5	65	65	63	62
MI	329	332	338	343	1,861	1,928	1,924	1,912
MN	455	458	463	463	2,171	2,213	2,137	2,135
MS	22	21	21	21	94	90	68	72
MO	115	113	109	109	444	455	386	393
MT	18.0	18.0	17.0	17.0	84	87	82	80
NE	60	59	58	57	279	275	260	261
NV	27	27	27	27	139	135	138	141
NH	15.0	15.0	15.0	15.0	72	74	72	72
NJ	10.5	10.0	10.0	10.0	43	43	41	41
NM	332	333	333	331	1,768	1,845	1,837	1,840
NY	628	626	626	626	2,964	3,078	3,041	3,020
NC	48	48	47	48	242	242	216	221
ND	30	29	28	27	114	116	108	106
OH	275	276	275	275	1,229	1,306	1,223	1,222
OK	70	69	68	67	296	295	282	271
OR	115	115	114	115	576	577	559	521
PA	549	549	550	550	2,663	2,747	2,625	2,647
RI	1.1	1.1	1.1	1.1	4.4	4.6	4.6	4.5
SC	18.0	18.5	18.0	18.0	87	89	71	75
SD	84	85	85	86	401	417	410	413
TN	66	64	62	61	270	272	224	233
TX	381	387	392	397	1,855	1,900	1,752	1,877
UT	85	85	85	85	414	435	448	435
VT	140	140	139	140	627	637	635	632
VA	100	100	100	100	449	456	419	429
WA	235	233	239	243	1,342	1,393	1,409	1,387
WV	13.0	13.0	13.0	12.0	50	51	49	45
WI	1,246	1,247	1,248	1,249	5,904	6,133	6,109	5,934
WY	7.1	7.2	7.0	7.0	29.1	34.9	35.0	34.7
US ³	9,152	9,170	9,198	9,236	46,063	47,438	46,111	46,042

¹ Quarterly average includes dry cows, excludes heifers not yet fresh.

² Excludes milk sucked by calves.

³ May not add due to rounding.

**Milk Cows and Production: Number and Milk Produced
by Quarter, State, and United States, 2008**

State	Milk Cows ¹				Milk Production ²			
	Jan-Mar	Apr-Jun	Jul-Sep	Oct-Dec	Jan-Mar	Apr-Jun	Jul-Sep	Oct-Dec
	<i>1,000 Head</i>	<i>1,000 Head</i>	<i>1,000 Head</i>	<i>1,000 Head</i>	<i>Million Pounds</i>	<i>Million Pounds</i>	<i>Million Pounds</i>	<i>Million Pounds</i>
AL	12.0	12.0	12.0	12.0	53	51	38	42
AK	0.6	0.6	0.6	0.6	2.1	1.8	1.7	1.6
AZ	185	186	185	188	1,144	1,165	977	1,063
AR	16.5	15.5	14.5	14.0	54	54	44	43
CA	1,840	1,846	1,846	1,843	10,460	10,515	10,089	10,139
CO	126	127	130	130	709	744	744	738
CT	19.0	19.0	19.0	19.0	93	94	88	88
DE	6.5	6.5	6.5	6.5	30.0	29.0	25.0	26.0
FL	120	120	120	119	569	556	453	482
GA	77	77	75	75	361	364	305	325
HI	2.0	1.7	1.6	1.6	4.7	4.6	4.4	4.8
ID	537	548	555	554	2,957	3,114	3,219	3,025
IL	102	102	102	102	488	495	448	463
IN	167	167	166	167	835	849	797	810
IA	216	216	215	215	1,083	1,096	1,064	1,076
KS	115	115	117	121	593	601	597	624
KY	91	92	88	87	323	324	272	291
LA	27	26	26	25	95	90	66	68
ME	33	33	33	33	147	154	154	148
MD	57	56	56	56	271	267	242	249
MA	15.0	15.0	14.5	14.5	64	66	63	61
MI	344	349	352	353	1,907	1,968	1,954	1,934
MN	463	463	465	467	2,204	2,228	2,163	2,187
MS	21	21	20	19	86	80	62	63
MO	110	111	111	110	407	435	376	397
MT	17.0	17.0	17.0	16.0	76	80	80	77
NE	57	57	59	59	265	265	272	278
NV	27	27	27	27	138	134	140	147
NH	15.0	15.0	15.0	15.0	76	77	74	72
NJ	10.0	10.0	10.0	10.0	44	44	39	38
NM	339	341	338	334	1,922	2,049	1,956	1,938
NY	626	626	626	625	3,092	3,205	3,111	3,024
NC	48	47	46	46	239	233	207	213
ND	26	26	26	25	107	107	104	100
OH	279	282	280	277	1,270	1,352	1,267	1,241
OK	66	64	63	63	277	268	261	261
OR	114	113	115	115	566	576	564	548
PA	551	548	547	548	2,671	2,750	2,599	2,555
RI	1.1	1.1	1.1	1.1	4.8	5.2	5.0	4.9
SC	18.0	18.0	18.0	17.0	90	88	70	71
SD	87	89	91	93	426	446	458	466
TN	61	59	58	59	256	255	212	225
TX	405	413	424	429	2,072	2,173	2,050	2,121
UT	85	85	85	85	425	450	458	443
VT	140	140	140	139	655	661	641	621
VA	98	98	97	97	451	447	407	421
WA	244	244	245	245	1,416	1,451	1,444	1,385
WV	12.0	12.0	12.0	12.0	46	46	45	44
WI	1,250	1,251	1,252	1,254	6,052	6,232	6,137	6,051
WY	7.0	7.0	7.0	7.0	33.6	34.5	34.1	33.5
US ³	9,286	9,315	9,330	9,330	47,610	48,774	46,881	46,727

¹ Quarterly average includes dry cows, excludes heifers not yet fresh.

² Excludes milk sucked by calves.

³ May not add due to rounding.

**Number of Licensed Dairy Herds,
by State, United States, and Puerto Rico, 2007-2008**

	Licensed Dairy Herds ¹	
	2007	2008
	<i>Number</i>	<i>Number</i>
AL	70	65
AK	5	5
AZ	120	120
AR	170	150
CA	1,960	1,905
CO	170	140
CT	150	150
DE	50	55
FL	150	140
GA	280	270
HI	5	2
ID	665	635
IL	1,060	960
IN	1,660	1,670
IA	2,130	2,020
KS	435	425
KY	1,120	1,060
LA	210	200
ME	340	330
MD	585	570
MA	180	180
MI	2,440	2,390
MN	5,070	4,865
MS	170	160
MO	1,720	1,760
MT	85	80
NE	350	320
NV	25	25
NH	130	130
NJ	110	110
NM	170	160
NY	5,770	5,620
NC	310	300
ND	290	255
OH	3,430	3,360
OK	320	310
OR	310	300
PA	8,010	7,670
RI	15	20
SC	80	80
SD	540	490
TN	590	550
TX	700	670
UT	280	260
VT	1,120	1,100
VA	745	725
WA	530	500
WV	110	110
WI	14,170	13,730
WY	25	25
US	59,130	57,127
PR ²	350	350

¹ Average number of dairy farms licensed to sell milk, based on counts collected from State and other regulatory agencies.

² Puerto Rico is not included in the U.S. total.

Reliability Statement

Survey Procedures: Primary data used to determine these estimates were obtained from a sample of producers. Individual States maintain a list of all known milk producers and information on the size of their herd. States use all known sources of producers to ensure that their lists are as complete as possible. Generally, all large producers and a sample of small producers are included in the survey. Questionnaires are mailed to producers near the end of the month to obtain data for the first day of the month. Additional reports are obtained by telephone, as needed, to supplement the mail response. Where feasible, States utilize state and federal administrative data, rather than conduct a monthly or quarterly survey, to estimate milk production. This eliminates duplication of data gathering by different government agencies. Indications of milk cow inventory are also obtained in the January and July Cattle Surveys.

Estimation Procedures: State offices prepare these estimates by using a combination of survey indications, historic trends, and any available administrative data. Individual State estimates are reviewed by the Agricultural Statistics Board for reasonableness.

Revision Policy: Milk production, rate per cow, and number of cows are subject to revision the following month for monthly States or the following quarter for the quarterly States. Normally, Federal Market Order sales are the main basis for revisions. However, data for all orders are not available in time for this revision. Estimates are again subject to revisions in February each year based on additional administrative data. In the event that additional changes are necessary, a third revision is possible in February the following year. Estimates are again reviewed after data from the five-year Census of Agriculture are available. No revisions are made after that date.

Reliability: Since all operations with dairy animals are not included in the sample, survey estimates are subject to sampling variability. Survey results are also subject to non-sampling errors such as omissions, duplications, and mistakes in reporting, recording, and processing the data. The effects of these errors cannot be measured directly. They are minimized through rigid quality controls in the data collection process and through a careful review of all reported data for consistency and reasonableness.

To assist users in evaluating the reliability of the estimates in this report, the "Root Mean Square Error" is shown for selected items on the next page. The "Root Mean Square Error" is a statistical measure based on past performance and is computed using the differences between first and final estimates. The "Root Mean Square Error" for milk cow inventory estimates over the past 24 months is 0.5 percent. This means that chances are 2 out of 3 that the final estimate will not be above or below the current estimate of 8.51 million head by more than 0.5 percent. Chances are 9 out of 10 that the difference will not exceed 0.9 percent.

Reliability of Monthly Milk Production Estimates ¹

Item	Root Mean Square Error	90% Confidence Level		Difference Between First and Latest Estimates			Months	
				Average	Smallest	Largest	First Above Latest	First Below Latest
				<i>Million Pounds</i>	<i>Million Pounds</i>	<i>Million Pounds</i>	<i>Number</i>	<i>Number</i>
Milk Production	<i>Percent</i> 0.2	<i>Percent</i> 0.4	<i>Million Pounds</i> 56	<i>Million Pounds</i> 25	<i>Million Pounds</i> 2	<i>Million Pounds</i> 76	<i>Number</i> 2	<i>Number</i> 22
All Milk Cows	<i>Percent</i> 0.5	<i>Percent</i> 0.9	<i>1,000 Head</i> 76	<i>1,000 Head</i> 43	<i>1,000 Head</i> 19	<i>1,000 Head</i> 55	<i>Number</i> 0	<i>Number</i> 24

¹ Based on the 23 State total for the past 24 months.

Information Contacts

Listed below are the commodity specialists in the Livestock Branch of the National Agricultural Statistics Service to contact for additional information.

Dan Kerestes, Chief, Livestock Branch (202) 720-3570

Livestock Section

Scott Hollis, Head, Livestock Section (202) 690-2424
 Jim Collom - Dairy Products (202) 690-3236
 Joe Gaynor - Dairy Products Prices (202) 690-2168
 Jason Hardegree - Cattle, Cattle on Feed (202) 720-3040
 Sherry Bertramsen - Livestock Slaughter (515) 284-4340
 Everett Olbert - Sheep and Goats (202) 720-4751
 Mike Miller - Milk Production and Milk Cows (202) 720-3278
 Nick Streff - Hogs and Pigs (202) 720-3106

ACCESS TO REPORTS!!

For your convenience, there are several ways to obtain NASS reports, data products, and services:

INTERNET ACCESS

All NASS reports are available free of charge on the worldwide Internet. For access, connect to the Internet and go to the NASS Home Page at: www.nass.usda.gov.

E-MAIL SUBSCRIPTION

All NASS reports are available by subscription free of charge direct to your e-mail address. Starting with the NASS Home Page at www.nass.usda.gov, under the right navigation, *Receive reports by Email*, click on **National** or **State**. Follow the instructions on the screen.

PRINTED REPORTS OR DATA PRODUCTS

CALL OUR TOLL-FREE ORDER DESK: 800-999-6779 (U.S. and Canada)
Other areas, please call 703-605-6220 FAX: 703-605-6900
(Visa, MasterCard, check, or money order acceptable for payment.)

ASSISTANCE

For **assistance** with general agricultural statistics or further information about NASS or its products or services, contact the **Agricultural Statistics Hotline** at **800-727-9540**, 7:30 a.m. to 4:00 p.m. ET, or e-mail: nass@nass.usda.gov.

The U.S. Department of Agriculture (USDA) prohibits discrimination in all its programs and activities on the basis of race, color, national origin, age, disability, and where applicable, sex, marital status, familial status, parental status, religion, sexual orientation, genetic information, political beliefs, reprisal, or because all or a part of an individual's income is derived from any public assistance program. (Not all prohibited bases apply to all programs.) Persons with disabilities who require alternative means for communication of program information (Braille, large print, audiotape, etc.) should contact USDA's TARGET Center at (202) 720-2600 (voice and TDD).

To file a complaint of discrimination, write to USDA, Director, Office of Civil Rights, 1400 Independence Avenue, S.W., Washington, D.C. 20250-9410, or call (800) 795-3272 (voice) or (202) 720-6382 (TDD). USDA is an equal opportunity provider and employer.



Global Agriculture & Rural America in Transition

Food & Energy: Expectations & Realities

February 26-27, 2009

Crystal Gateway Marriott Hotel
Arlington, Virginia

www.usda.gov/oce/forum

Early Bird Registration \$350 until January 23, 2009 * \$375 after January 23

Topical Sessions Will Address:

- *Commodity Markets
- *Trade & Farm Policy
- *Conservation
- *Risk Management
- *Food Prices
- *Rural America
- *Food Safety & Food Security
- *Energy
- *Biotechnology
- *World Markets