

Milk Production

Released March 18, 2009, by the National Agricultural Statistics Service (NASS), Agricultural Statistics Board, U.S. Department of Agriculture. For information on *Milk Production* call Mike Miller at 202-720-3278, office hours 7:30 a.m. to 4:00 p.m. ET.

February Milk Production down 2.5 Percent

Milk production in the 23 major States during February totaled 13.7 billion pounds, down 2.5 percent from February 2008. January revised production at 14.9 billion pounds, was up 1.1 percent from January 2008. The January revision represented an increase of 52 million pounds or 0.4 percent from last month's preliminary production estimate. Please see the special note below.

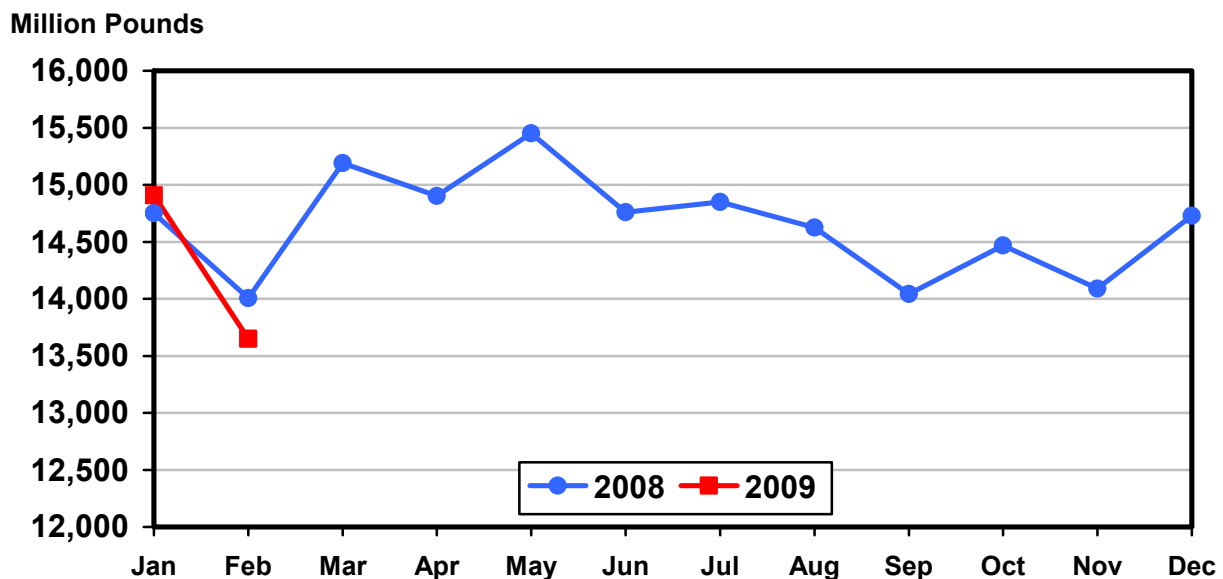
Production per cow in the 23 major States averaged 1,608 pounds for February, 48 pounds below February 2008.

The number of milk cows on farms in the 23 major States was 8.49 million head, 31,000 head more than February 2008, but 16,000 head less than January 2009.

Special Note

NASS added Utah to the monthly estimating program and removed Kentucky beginning with this report. Historic estimates have been created for Utah for 2008 and January 2009 for comparison purposes. The inclusion of Utah and exclusion of Kentucky accounted for 43 of the 52 million pound revision to the 23-State milk production total for January 2009. The remaining 9 million pounds was a result of the normal revision process.

Monthly Milk Production 23 States



Milk Cows and Production: By Quarter, United States, 2008-2009¹

Quarter	Milk Cows ²		Milk Per Cow ³		Milk Production ³		
	2008	2009	2008	2009	2008	2009	Change From 2008
	<i>1,000 Head</i>	<i>1,000 Head</i>	<i>Pounds</i>	<i>Pounds</i>	<i>Million Pounds</i>	<i>Million Pounds</i>	<i>Percent</i>
Jan-Mar	9,286		5,127		47,610		
Apr-Jun	9,315		5,236		48,774		
Jul-Sep	9,330		5,025		46,881		
Oct-Dec	9,330		5,008		46,727		
Annual	9,315		20,396		189,992		

¹ May not add due to rounding.

² Includes dry cows, excludes heifers not yet fresh.

³ Excludes milk sucked by calves.

Milk Cows and Production: By Month, 23 Selected States, 2008-2009¹

Month	Milk Cows ²		Milk Per Cow ³		Milk Production ³		
	2008	2009	2008	2009	2008	2009	Change from 2008
	<i>1,000 Head</i>	<i>1,000 Head</i>	<i>Pounds</i>	<i>Pounds</i>	<i>Million Pounds</i>	<i>Million Pounds</i>	<i>Percent</i>
Jan	8,445	8,504	1,747	1,753	14,750	14,907	1.1
Feb	8,457	8,488	1,656	1,608	14,007	13,650	-2.5
Mar	8,467		1,794		15,191		
Apr	8,482		1,757		14,901		
May	8,496		1,819		15,451		
Jun	8,500		1,736		14,760		
Jul	8,515		1,744		14,848		
Aug	8,515		1,718		14,626		
Sep	8,510		1,650		14,041		
Oct	8,512		1,700		14,469		
Nov	8,519		1,654		14,089		
Dec	8,519		1,729		14,728		
Annual	8,495		20,704		175,861		

¹ 2009 previous month revised.

² Includes dry cows, excludes heifers not yet fresh.

³ Excludes milk sucked by calves.

Estimated Milk Cows and Production: By Month, United States, 2008-2009¹

Month	Milk Cows ²		Milk Per Cow ³		Milk Production ³		
	2008	2009	2008	2009	2008	2009	Change From 2008
	<i>1,000 Head</i>	<i>1,000 Head</i>	<i>Pounds</i>	<i>Pounds</i>	<i>Million Pounds</i>	<i>Million Pounds</i>	<i>Percent</i>
Jan	9,276	9,316	1,722	1,729	15,976	16,105	0.8
Feb	9,287	9,298	1,634	1,586	15,176	14,745	-2.8
Mar	9,295		1,771		16,458		
Apr	9,307		1,733		16,125		
May	9,318		1,793		16,707		
Jun	9,321		1,710		15,942		
Jul	9,335		1,713		15,995		
Aug	9,331		1,689		15,757		
Sep	9,323		1,623		15,129		
Oct	9,324		1,675		15,615		
Nov	9,333		1,630		15,212		
Dec	9,334		1,703		15,900		
Annual	9,315		20,396		189,992		

¹ 2008 revised.

² Includes dry cows, excludes heifers not yet fresh.

³ Excludes milk sucked by calves.

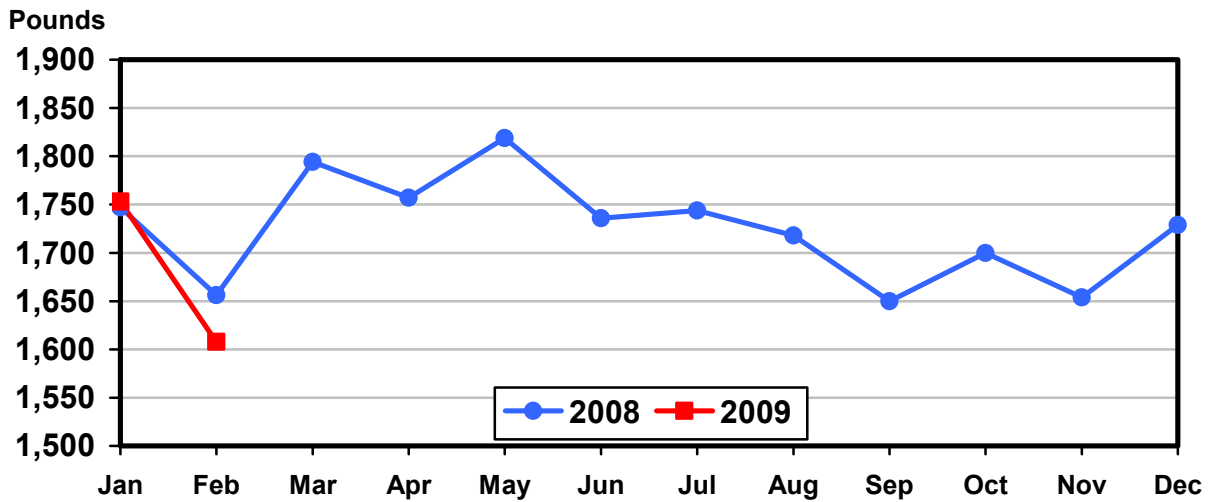
Milk Cows and Production: By State, February 2008-2009

State	Milk Cows ¹		Milk Per Cow ²		Milk Production ²		
	2008	2009	2008	2009	2008	2009	Change From 2008
	<i>1,000 Head</i>	<i>1,000 Head</i>	<i>Pounds</i>	<i>Pounds</i>	<i>Million Pounds</i>	<i>Million Pounds</i>	<i>Percent</i>
AZ	185	189	1,960	1,870	363	353	-2.8
CA	1,840	1,824	1,810	1,720	3,330	3,137	-5.8
CO	126	128	1,800	1,780	227	228	0.4
FL	120	117	1,530	1,590	184	186	1.1
ID	537	552	1,750	1,670	940	922	-1.9
IL	102	102	1,515	1,510	155	154	-0.6
IN	167	167	1,600	1,560	267	261	-2.2
IA	216	215	1,600	1,550	346	333	-3.8
KS	115	124	1,645	1,615	189	200	5.8
MI	344	354	1,760	1,695	605	600	-0.8
MN	463	468	1,520	1,490	704	697	-1.0
MO	110	107	1,170	1,150	129	123	-4.7
NM	340	333	1,785	1,880	607	626	3.1
NY	626	623	1,590	1,540	995	959	-3.6
OH	280	277	1,445	1,445	405	400	-1.2
OR	114	114	1,580	1,525	180	174	-3.3
PA	551	551	1,540	1,490	849	821	-3.3
TX	404	430	1,635	1,650	661	710	7.4
UT	85	85	1,590	1,570	135	133	-1.5
VT	140	136	1,500	1,415	210	192	-8.6
VA	98	97	1,470	1,425	144	138	-4.2
WA	244	240	1,850	1,750	451	420	-6.9
WI	1,250	1,255	1,545	1,500	1,931	1,883	-2.5
23-State Total	8,457	8,488	1,656	1,608	14,007	13,650	-2.5

¹ Includes dry cows, excludes heifers not yet fresh.

² Excludes milk sucked by calves.

Monthly Milk per Cow 23 States



Milk Cows and Production: By State, January 2008-2009 ¹

State	Milk Cows ²		Milk per Cow ³		Milk Production ³		
	2008	2009	2008	2009	2008	2009	Change From 2008
	<i>1,000 Head</i>	<i>1,000 Head</i>	<i>Pounds</i>	<i>Pounds</i>	<i>Million Pounds</i>	<i>Million Pounds</i>	<i>Percent</i>
AZ	185	189	2,020	1,980	374	374	
CA	1,838	1,830	1,900	1,885	3,492	3,450	-1.2
CO	126	129	1,880	1,940	237	250	5.5
FL	120	118	1,550	1,660	186	196	5.4
ID	534	554	1,870	1,810	999	1,003	0.4
IL	103	102	1,615	1,610	166	164	-1.2
IN	167	167	1,710	1,695	286	283	-1.0
IA	216	215	1,680	1,700	363	366	0.8
KS	115	125	1,720	1,800	198	225	13.6
MI	344	354	1,910	1,875	657	664	1.1
MN	463	468	1,610	1,625	745	761	2.1
MO	110	108	1,225	1,270	135	137	1.5
NM	336	334	1,900	2,015	638	673	5.5
NY	626	624	1,660	1,670	1,039	1,042	0.3
OH	278	277	1,540	1,560	428	432	0.9
OR	114	115	1,685	1,650	192	190	-1.0
PA	552	550	1,630	1,630	900	897	-0.3
TX	402	430	1,685	1,780	677	765	13.0
UT	85	85	1,690	1,720	144	146	1.4
VT	140	137	1,585	1,540	222	211	-5.0
VA	98	97	1,540	1,545	151	150	-0.7
WA	243	241	1,965	1,925	477	464	-2.7
WI	1,250	1,255	1,635	1,645	2,044	2,064	1.0
23-State Total	8,445	8,504	1,747	1,753	14,750	14,907	1.1

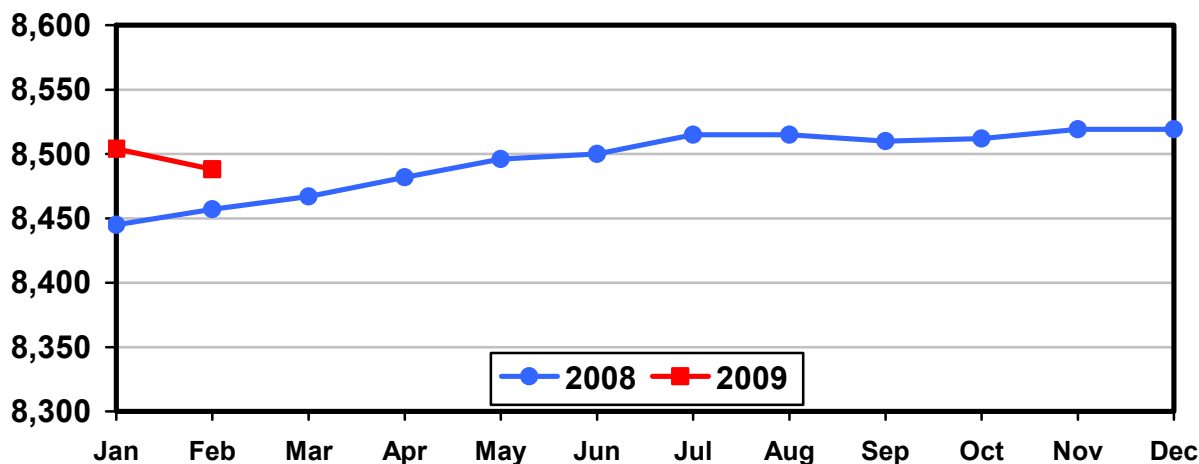
¹ 2008 revised.

² Includes dry cows, excludes heifers not yet fresh.

³ Excludes milk sucked by calves.

Monthly Milk Cows 23 States

Thousand Head



Reliability Statement

Survey Procedures: Primary data used to determine these estimates were obtained from a sample of producers. Individual States maintain a list of all known milk producers and information on the size of their herd. States use all known sources of producers to ensure that their lists are as complete as possible. Generally, all large producers and a sample of small producers are included in the survey. Questionnaires are mailed to producers near the end of the month to obtain data for the first day of the month. Additional reports are obtained by telephone, as needed, to supplement the mail response. Where feasible, States utilize state and federal administrative data, rather than conduct a monthly or quarterly survey, to estimate milk production. This eliminates duplication of data gathering by different government agencies. Indications of milk cow inventory are also obtained in the January and July Cattle Surveys.

Estimation Procedures: State offices prepare these estimates by using a combination of survey indications, historic trends, and any available administrative data. Individual State estimates are reviewed by the Agricultural Statistics Board for reasonableness.

Revision Policy: Milk production, rate per cow, and number of cows are subject to revision the following month for monthly States or the following quarter for the quarterly States. Normally, Federal Market Order sales are the main basis for revisions. However, data for all orders are not available in time for this revision. Estimates are again subject to revisions in February each year based on additional administrative data. In the event that additional changes are necessary, a third revision is possible in February the following year. Estimates are again reviewed after data from the five-year Census of Agriculture are available. No revisions are made after that date.

Reliability: Since all operations with dairy animals are not included in the sample, survey estimates are subject to sampling variability. Survey results are also subject to non-sampling errors such as omissions, duplications, and mistakes in reporting, recording, and processing the data. The effects of these errors cannot be measured directly. They are minimized through rigid quality controls in the data collection process and through a careful review of all reported data for consistency and reasonableness.

To assist users in evaluating the reliability of the estimates in this report, the "Root Mean Square Error" is shown for selected items on the next page. The "Root Mean Square Error" is a statistical measure based on past performance and is computed using the differences between first and final estimates. The "Root Mean Square Error" for the 23 State milk cow inventory estimates over the past 24 months is 0.5 percent. This means that chances are 2 out of 3 that the final estimate will not be above or below the current estimate of 8.49 million head by more than 0.5 percent. Chances are 9 out of 10 that the difference will not exceed 0.9 percent.

Reliability of Monthly Milk Production Estimates ¹

Item	Root Mean Square Error	90% Confidence Level		Difference Between First and Latest Estimates			Months	
				Average	Smallest	Largest	First Above Latest	First Below Latest
				Million Pounds	Million Pounds	Million Pounds	Number	Number
Milk Production	<i>Percent</i> 0.2	<i>Percent</i> 0.4	<i>Million Pounds</i> 52	<i>Million Pounds</i> 24	<i>Million Pounds</i> 2	<i>Million Pounds</i> 102	<i>Number</i> 2	<i>Number</i> 22
All Milk Cows	<i>Percent</i> 0.5	<i>Percent</i> 0.9	<i>1,000 Head</i> 76	<i>1,000 Head</i> 43	<i>1,000 Head</i> 4	<i>1,000 Head</i> 55	<i>Number</i> 1	<i>Number</i> 23

¹ Based on the 23 State total for the past 24 months.

Information Contacts

Listed below are the commodity specialists in the Livestock Branch of the National Agricultural Statistics Service to contact for additional information.

Dan Kerestes, Chief, Livestock Branch (202) 720-3570

Livestock Section

Scott Hollis, Head, Livestock Section (202) 690-2424
 Jim Collom - Dairy Products (202) 690-3236
 Joe Gaynor - Dairy Products Prices (202) 690-2168
 Jason Hardegree - Cattle, Cattle on Feed (202) 720-3040
 Sherry Bertramsen - Livestock Slaughter (515) 284-4340
 Everett Olbert - Sheep and Goats (202) 720-4751
 Mike Miller - Milk Production and Milk Cows (202) 720-3278
 Nick Streff - Hogs and Pigs (202) 720-3106

ACCESS TO REPORTS!!

For your convenience, there are several ways to obtain NASS reports, data products, and services:

INTERNET ACCESS

All NASS reports are available free of charge on the worldwide Internet. For access, connect to the Internet and go to the NASS Home Page at: www.nass.usda.gov.

E-MAIL SUBSCRIPTION

All NASS reports are available by subscription free of charge direct to your e-mail address. Starting with the NASS Home Page at www.nass.usda.gov, under the right navigation, *Receive reports by Email*, click on **National** or **State**. Follow the instructions on the screen.

PRINTED REPORTS OR DATA PRODUCTS

CALL OUR TOLL-FREE ORDER DESK: 800-999-6779 (U.S. and Canada)
Other areas, please call 703-605-6220 FAX: 703-605-6900
(Visa, MasterCard, check, or money order acceptable for payment.)

ASSISTANCE

For **assistance** with general agricultural statistics or further information about NASS or its products or services, contact the **Agricultural Statistics Hotline** at **800-727-9540**, 7:30 a.m. to 4:00 p.m. ET, or e-mail: nass@nass.usda.gov.

The U.S. Department of Agriculture (USDA) prohibits discrimination in all its programs and activities on the basis of race, color, national origin, age, disability, and where applicable, sex, marital status, familial status, parental status, religion, sexual orientation, genetic information, political beliefs, reprisal, or because all or a part of an individual's income is derived from any public assistance program. (Not all prohibited bases apply to all programs.) Persons with disabilities who require alternative means for communication of program information (Braille, large print, audiotape, etc.) should contact USDA's TARGET Center at (202) 720-2600 (voice and TDD).

To file a complaint of discrimination, write to USDA, Director, Office of Civil Rights, 1400 Independence Avenue, S.W., Washington, D.C. 20250-9410, or call (800) 795-3272 (voice) or (202) 720-6382 (TDD). USDA is an equal opportunity provider and employer.