

Milk Production

Released June 18, 2009, by the National Agricultural Statistics Service (NASS), Agricultural Statistics Board, U.S. Department of Agriculture. For information on *Milk Production* call Mike Miller at 202-720-3278, office hours 7:30 a.m. to 4:00 p.m. ET.

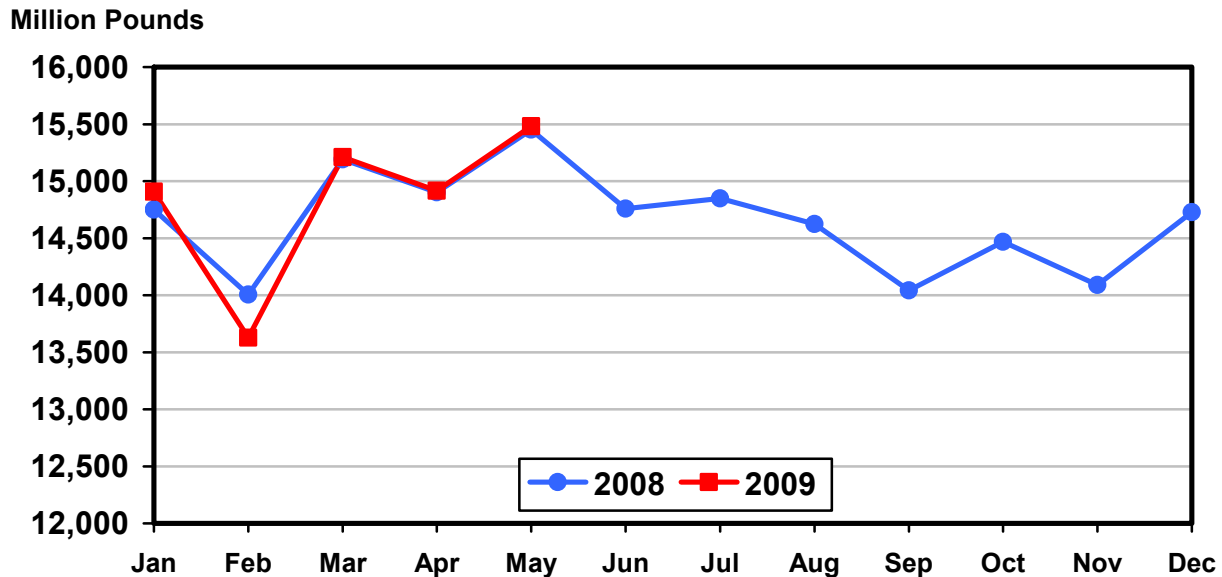
May Milk Production up 0.2 Percent

Milk production in the 23 major States during May totaled 15.5 billion pounds, up 0.2 percent from May 2008. April revised production at 14.9 billion pounds, was up 0.1 percent from April 2008. The April revision represented an increase of 10 million pounds or 0.1 percent from last month's preliminary production estimate.

Production per cow in the 23 major States averaged 1,828 pounds for May, 9 pounds above May 2008.

The number of milk cows on farms in the 23 major States was 8.47 million head, 25,000 head less than May 2008, and 10,000 head less than April 2009.

Monthly Milk Production 23 States



Milk Cows and Production: By Quarter, United States, 2008-2009¹

Quarter	Milk Cows ²		Milk Per Cow ³		Milk Production ³		
	2008	2009	2008	2009	2008	2009	Change From 2008
	<i>1,000 Head</i>	<i>1,000 Head</i>	<i>Pounds</i>	<i>Pounds</i>	<i>Million Pounds</i>	<i>Million Pounds</i>	<i>Percent</i>
Jan-Mar	9,286	9,297	5,127	5,093	47,610	47,351	-0.5
Apr-Jun	9,315		5,236		48,774		
Jul-Sep	9,330		5,025		46,881		
Oct-Dec	9,330		5,008		46,727		
Annual	9,315		20,396		189,992		

¹ May not add due to rounding.

² Includes dry cows, excludes heifers not yet fresh.

³ Excludes milk sucked by calves.

Milk Cows and Production: By Month, 23 Selected States, 2008-2009¹

Month	Milk Cows ²		Milk Per Cow ³		Milk Production ³		
	2008	2009	2008	2009	2008	2009	Change from 2008
	<i>1,000 Head</i>	<i>1,000 Head</i>	<i>Pounds</i>	<i>Pounds</i>	<i>Million Pounds</i>	<i>Million Pounds</i>	<i>Percent</i>
Jan	8,445	8,504	1,747	1,753	14,750	14,907	1.1
Feb	8,457	8,486	1,656	1,606	14,007	13,627	-2.7
Mar	8,467	8,481	1,794	1,794	15,191	15,211	0.1
Apr	8,482	8,481	1,757	1,759	14,901	14,916	0.1
May	8,496	8,471	1,819	1,828	15,451	15,483	0.2
Jun	8,500		1,736		14,760		
Jul	8,515		1,744		14,848		
Aug	8,515		1,718		14,626		
Sep	8,510		1,650		14,041		
Oct	8,512		1,700		14,469		
Nov	8,519		1,654		14,089		
Dec	8,519		1,729		14,728		
Annual	8,495		20,704		175,861		

¹ 2009 previous month revised.

² Includes dry cows, excludes heifers not yet fresh.

³ Excludes milk sucked by calves.

Estimated Milk Cows and Production: By Month, United States, 2008-2009¹

Month	Milk Cows ²		Milk Per Cow ³		Milk Production ³		
	2008	2009	2008	2009	2008	2009	Change From 2008
	<i>1,000 Head</i>	<i>1,000 Head</i>	<i>Pounds</i>	<i>Pounds</i>	<i>Million Pounds</i>	<i>Million Pounds</i>	<i>Percent</i>
Jan	9,276	9,314	1,722	1,732	15,976	16,135	1.0
Feb	9,287	9,291	1,634	1,588	15,176	14,753	-2.8
Mar	9,295	9,286	1,771	1,773	16,458	16,463	
Apr	9,307	9,286	1,733	1,736	16,125	16,125	
May	9,318	9,275	1,793	1,804	16,707	16,730	0.1
Jun	9,321		1,710		15,942		
Jul	9,335		1,713		15,995		
Aug	9,331		1,689		15,757		
Sep	9,323		1,623		15,129		
Oct	9,324		1,675		15,615		
Nov	9,333		1,630		15,212		
Dec	9,334		1,703		15,900		
Annual	9,315		20,396		189,992		

¹ 2009 revised.

² Includes dry cows, excludes heifers not yet fresh.

³ Excludes milk sucked by calves.

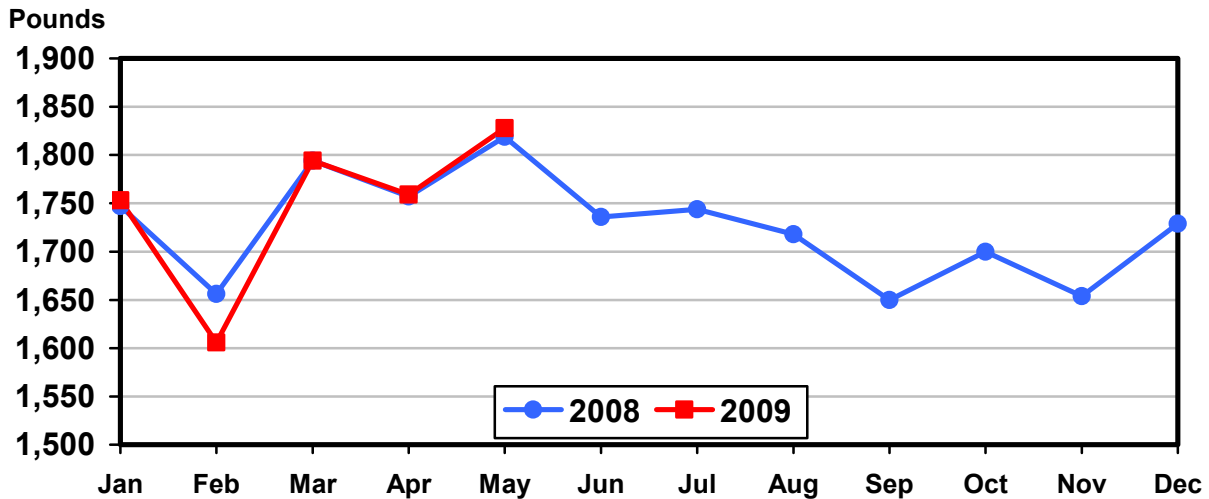
Milk Cows and Production: By State, May 2008-2009

State	Milk Cows ¹		Milk Per Cow ²		Milk Production ²		
	2008	2009	2008	2009	2008	2009	Change From 2008
	<i>1,000 Head</i>	<i>1,000 Head</i>	<i>Pounds</i>	<i>Pounds</i>	<i>Million Pounds</i>	<i>Million Pounds</i>	<i>Percent</i>
AZ	186	184	2,165	2,055	403	378	-6.2
CA	1,847	1,816	1,940	1,935	3,583	3,514	-1.9
CO	127	128	1,990	2,020	253	259	2.4
FL	120	117	1,625	1,700	195	199	2.1
ID	550	551	1,930	1,900	1,062	1,047	-1.4
IL	102	102	1,665	1,670	170	170	
IN	168	168	1,730	1,765	291	297	2.1
IA	216	215	1,740	1,785	376	384	2.1
KS	115	120	1,790	1,835	206	220	6.8
MI	350	357	1,935	1,955	677	698	3.1
MN	463	468	1,645	1,675	762	784	2.9
MO	111	110	1,365	1,330	152	146	-3.9
NM	342	332	2,040	2,145	698	712	2.0
NY	626	621	1,770	1,770	1,108	1,099	-0.8
OH	282	278	1,660	1,670	468	464	-0.9
OR	113	114	1,745	1,755	197	200	1.5
PA	548	547	1,720	1,710	943	935	-0.8
TX	412	430	1,800	1,835	742	789	6.3
UT	85	84	1,800	1,805	153	152	-0.7
VT	140	136	1,600	1,595	224	217	-3.1
VA	98	96	1,580	1,595	155	153	-1.3
WA	244	241	2,025	2,020	494	487	-1.4
WI	1,251	1,256	1,710	1,735	2,139	2,179	1.9
23-State Total	8,496	8,471	1,819	1,828	15,451	15,483	0.2

¹ Includes dry cows, excludes heifers not yet fresh.

² Excludes milk sucked by calves.

Monthly Milk per Cow 23 States



Milk Cows and Production: By State, April 2008-2009 ¹

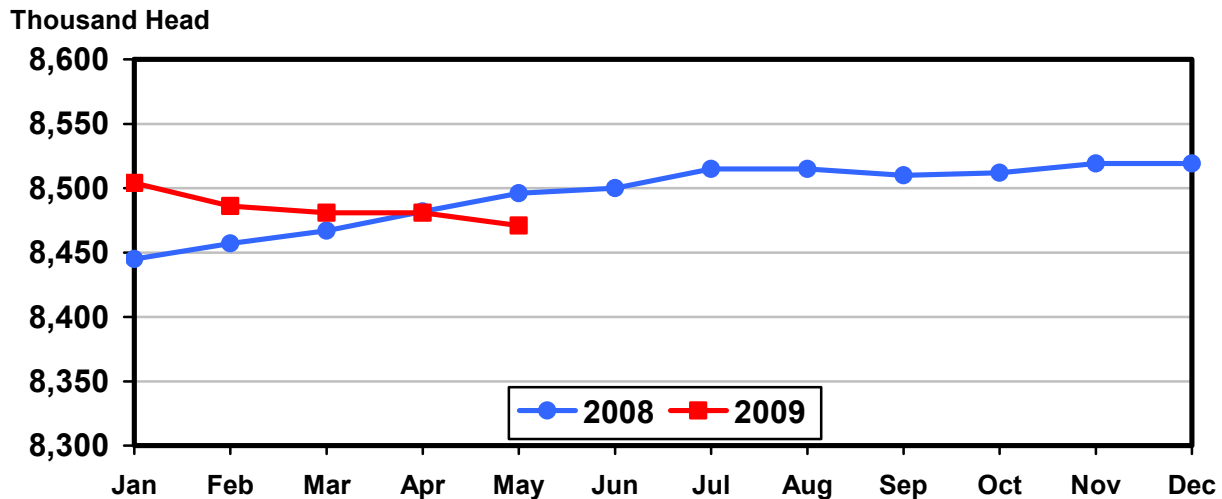
State	Milk Cows ²		Milk per Cow ³		Milk Production ³		
	2008	2009	2008	2009	2008	2009	Change From 2008
	<i>1,000 Head</i>	<i>1,000 Head</i>	<i>Pounds</i>	<i>Pounds</i>	<i>Million Pounds</i>	<i>Million Pounds</i>	<i>Percent</i>
AZ	186	188	2,145	2,050	399	385	-3.5
CA	1,845	1,821	1,905	1,885	3,515	3,433	-2.3
CO	127	128	1,910	1,920	243	246	1.2
FL	120	117	1,568	1,710	188	200	6.4
ID	543	551	1,850	1,800	1,005	992	-1.3
IL	102	102	1,615	1,625	165	166	0.6
IN	168	167	1,690	1,710	284	286	0.7
IA	216	215	1,670	1,710	361	368	1.9
KS	115	120	1,740	1,775	200	213	6.5
MI	347	356	1,840	1,860	638	662	3.8
MN	463	468	1,580	1,605	732	751	2.6
MO	111	110	1,325	1,320	147	145	-1.4
NM	342	332	1,990	2,070	681	687	0.9
NY	626	623	1,670	1,670	1,045	1,040	-0.5
OH	281	277	1,580	1,590	444	440	-0.9
OR	113	114	1,680	1,675	190	191	0.5
PA	549	549	1,670	1,640	917	900	-1.9
TX	410	430	1,770	1,810	726	778	7.2
UT	85	85	1,715	1,720	146	146	
VT	140	136	1,560	1,520	218	207	-5.0
VA	98	96	1,570	1,585	154	152	-1.3
WA	244	240	1,950	1,925	476	462	-2.9
WI	1,251	1,256	1,620	1,645	2,027	2,066	1.9
23-State Total	8,482	8,481	1,757	1,759	14,901	14,916	0.1

¹ 2009 revised.

² Includes dry cows, excludes heifers not yet fresh.

³ Excludes milk sucked by calves.

Monthly Milk Cows 23 States



Reliability Statement

Survey Procedures: Primary data used to determine these estimates were obtained from a sample of producers. Individual States maintain a list of all known milk producers and information on the size of their herd. States use all known sources of producers to ensure that their lists are as complete as possible. Generally, all large producers and a sample of small producers are included in the survey. Questionnaires are mailed to producers near the end of the month to obtain data for the first day of the month. Additional reports are obtained by telephone, as needed, to supplement the mail response. Where feasible, States utilize state and federal administrative data, rather than conduct a monthly or quarterly survey, to estimate milk production. This eliminates duplication of data gathering by different government agencies. Indications of milk cow inventory are also obtained in the January and July Cattle Surveys.

Estimation Procedures: State offices prepare these estimates by using a combination of survey indications, historic trends, and any available administrative data. Individual State estimates are reviewed by the Agricultural Statistics Board for reasonableness.

Revision Policy: Milk production, rate per cow, and number of cows are subject to revision the following month for monthly States or the following quarter for the quarterly States. Normally, Federal Market Order sales are the main basis for revisions. However, data for all orders are not available in time for this revision. Estimates are again subject to revisions in February each year based on additional administrative data. In the event that additional changes are necessary, a third revision is possible in February the following year. Estimates are again reviewed after data from the five-year Census of Agriculture are available. No revisions are made after that date.

Reliability: Since all operations with dairy animals are not included in the sample, survey estimates are subject to sampling variability. Survey results are also subject to non-sampling errors such as omissions, duplications, and mistakes in reporting, recording, and processing the data. The effects of these errors cannot be measured directly. They are minimized through rigid quality controls in the data collection process and through a careful review of all reported data for consistency and reasonableness.

To assist users in evaluating the reliability of the estimates in this report, the "Root Mean Square Error" is shown for selected items on the next page. The "Root Mean Square Error" is a statistical measure based on past performance and is computed using the differences between first and final estimates. The "Root Mean Square Error" for the 23 State milk cow inventory estimates over the past 24 months is 0.5 percent. This means that chances are 2 out of 3 that the final estimate will not be above or below the current estimate of 8.47 million head by more than 0.5 percent. Chances are 9 out of 10 that the difference will not exceed 0.9 percent.

Reliability of Monthly Milk Production Estimates ¹

Item	Root Mean Square Error	90% Confidence Level		Difference Between First and Latest Estimates			Months	
				Average	Smallest	Largest	First Above Latest	First Below Latest
				<i>Million Pounds</i>	<i>Million Pounds</i>	<i>Million Pounds</i>	<i>Number</i>	<i>Number</i>
Milk Production	<i>Percent</i> 0.2	<i>Percent</i> 0.4	<i>Million Pounds</i> 60	<i>Million Pounds</i> 25	<i>Million Pounds</i> 3	<i>Million Pounds</i> 102	<i>Number</i> 2	<i>Number</i> 22
All Milk Cows	<i>Percent</i> 0.5	<i>Percent</i> 0.9	<i>1,000 Head</i> 74	<i>1,000 Head</i> 39	<i>1,000 Head</i> 1	<i>1,000 Head</i> 55	<i>Number</i> 3	<i>Number</i> 21

¹ Based on the 23 State total for the past 24 months.

Information Contacts

Listed below are the commodity specialists in the Livestock Branch of the National Agricultural Statistics Service to contact for additional information.

Dan Kerestes, Chief, Livestock Branch (202) 720-3570

Livestock Section

Scott Hollis, Head, Livestock Section (202) 690-2424
 Jim Collom - Dairy Products (202) 690-3236
 Joe Gaynor - Dairy Products Prices (202) 690-2168
 Jason Hardegree - Cattle, Cattle on Feed (202) 720-3040
 Sherry Bertramsen - Livestock Slaughter (515) 284-4340
 Everett Olbert - Sheep and Goats (202) 720-4751
 Mike Miller - Milk Production and Milk Cows (202) 720-3278
 Nick Streff - Hogs and Pigs (202) 720-3106

ACCESS TO REPORTS!!

For your convenience, there are several ways to obtain NASS reports, data products, and services:

INTERNET ACCESS

All NASS reports are available free of charge. For free access, connect to the Internet and go to the NASS Home Page at: www.nass.usda.gov.

E-MAIL SUBSCRIPTION

All NASS reports are available by subscription free of charge direct to your e-mail address. Starting with the NASS Home Page at www.nass.usda.gov, under the right navigation, *Receive reports by Email*, click on **National** or **State**. Follow the instructions on the screen.

PRINTED REPORTS OR DATA PRODUCTS

CALL OUR TOLL-FREE ORDER DESK: 800-999-6779 (U.S. and Canada)
Other areas, please call 703-605-6220 FAX: 703-605-6900
(Visa, MasterCard, check, or money order acceptable for payment.)

ASSISTANCE

For **assistance** with general agricultural statistics or further information about NASS or its products or services, contact the **Agricultural Statistics Hotline** at **800-727-9540**, 7:30 a.m. to 4:00 p.m. ET, or e-mail: nass@nass.usda.gov.

The U.S. Department of Agriculture (USDA) prohibits discrimination in all its programs and activities on the basis of race, color, national origin, age, disability, and where applicable, sex, marital status, familial status, parental status, religion, sexual orientation, genetic information, political beliefs, reprisal, or because all or a part of an individual's income is derived from any public assistance program. (Not all prohibited bases apply to all programs.) Persons with disabilities who require alternative means for communication of program information (Braille, large print, audiotape, etc.) should contact USDA's TARGET Center at (202) 720-2600 (voice and TDD).

To file a complaint of discrimination, write to USDA, Director, Office of Civil Rights, 1400 Independence Avenue, S.W., Washington, D.C. 20250-9410, or call (800) 795-3272 (voice) or (202) 720-6382 (TDD). USDA is an equal opportunity provider and employer.