

# Milk Production

Released July 17, 2009, by the National Agricultural Statistics Service (NASS), Agricultural Statistics Board, U.S. Department of Agriculture. For information on *Milk Production* call Mike Miller at 202-720-3278, office hours 7:30 a.m. to 4:00 p.m. ET.

## June Milk Production down 0.1 Percent

**Milk production** in the 23 major States during June totaled 14.7 billion pounds, down 0.1 percent from June 2008. May revised production at 15.5 billion pounds, was up 0.5 percent from May 2008. The May revision represented an increase of 46 million pounds or 0.3 percent from last month's preliminary production estimate.

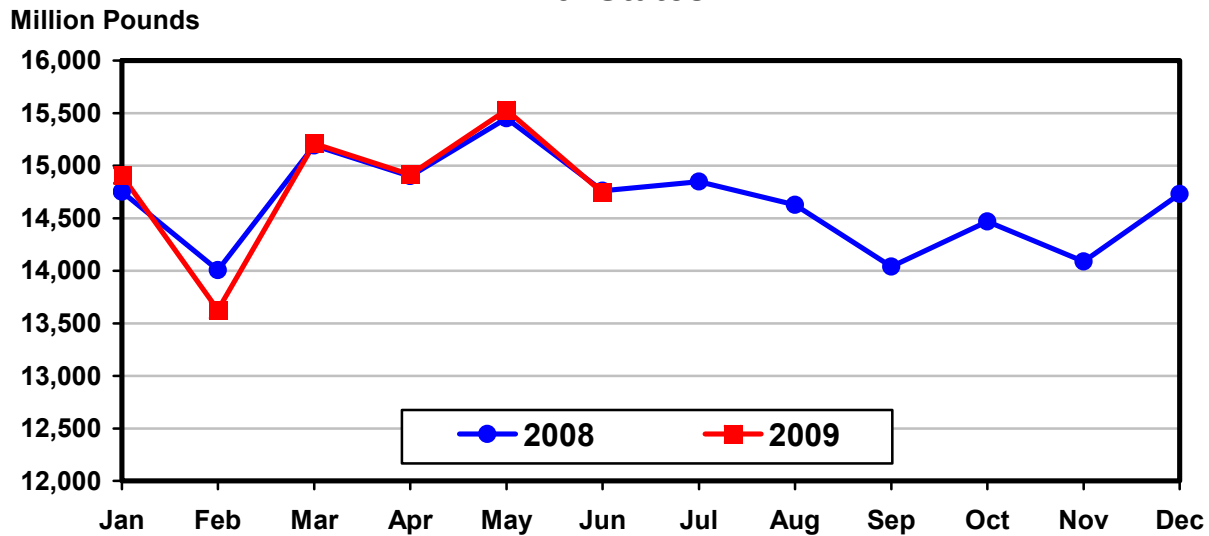
**Production per cow** in the 23 major States averaged 1,746 pounds for June, 10 pounds above June 2008.

**The number of milk cows** on farms in the 23 major States was 8.44 million head, 56,000 head less than June 2008, and 29,000 head less than May 2009.

## April - June Milk Production up 0.1 Percent

Milk production in the U.S. during the April - June quarter totaled 48.8 billion pounds, up 0.1 percent from the April - June quarter last year. The average number of milk cows in the U.S. during the quarter was 9.26 million head, 53,000 head less than the same period last year.

## Monthly Milk Production 23 States



**Milk Cows and Production: By Quarter, United States, 2008-2009<sup>1</sup>**

Quarter	Milk Cows <sup>2</sup>		Milk Per Cow <sup>3</sup>		Milk Production <sup>3</sup>		
	2008	2009	2008	2009	2008	2009	Change From 2008
	<i>1,000 Head</i>	<i>1,000 Head</i>	<i>Pounds</i>	<i>Pounds</i>	<i>Million Pounds</i>	<i>Million Pounds</i>	<i>Percent</i>
Jan-Mar	9,286	9,295	5,127	5,096	47,610	47,363	-0.5
Apr-Jun	9,315	9,262	5,236	5,272	48,774	48,826	0.1
Jul-Sep	9,330		5,025		46,881		
Oct-Dec	9,330		5,008		46,727		
Annual	9,315		20,396		189,992		

<sup>1</sup> May not add due to rounding.

<sup>2</sup> Includes dry cows, excludes heifers not yet fresh.

<sup>3</sup> Excludes milk sucked by calves.

**Milk Cows and Production: By Month, 23 Selected States, 2008-2009<sup>1</sup>**

Month	Milk Cows <sup>2</sup>		Milk Per Cow <sup>3</sup>		Milk Production <sup>3</sup>		
	2008	2009	2008	2009	2008	2009	Change from 2008
	<i>1,000 Head</i>	<i>1,000 Head</i>	<i>Pounds</i>	<i>Pounds</i>	<i>Million Pounds</i>	<i>Million Pounds</i>	<i>Percent</i>
Jan	8,445	8,504	1,747	1,753	14,750	14,907	1.1
Feb	8,457	8,486	1,656	1,606	14,007	13,627	-2.7
Mar	8,467	8,481	1,794	1,794	15,191	15,211	0.1
Apr	8,482	8,481	1,757	1,759	14,901	14,916	0.1
May	8,496	8,473	1,819	1,833	15,451	15,529	0.5
Jun	8,500	8,444	1,736	1,746	14,760	14,741	-0.1
Jul	8,515		1,744		14,848		
Aug	8,515		1,718		14,626		
Sep	8,510		1,650		14,041		
Oct	8,512		1,700		14,469		
Nov	8,519		1,654		14,089		
Dec	8,519		1,729		14,728		
Annual	8,495		20,704		175,861		

<sup>1</sup> 2009 previous month revised.

<sup>2</sup> Includes dry cows, excludes heifers not yet fresh.

<sup>3</sup> Excludes milk sucked by calves.

**Estimated Milk Cows and Production: By Month, United States, 2008-2009<sup>1</sup>**

Month	Milk Cows <sup>2</sup>		Milk Per Cow <sup>3</sup>		Milk Production <sup>3</sup>		
	2008	2009	2008	2009	2008	2009	Change From 2008
	<i>1,000 Head</i>	<i>1,000 Head</i>	<i>Pounds</i>	<i>Pounds</i>	<i>Million Pounds</i>	<i>Million Pounds</i>	<i>Percent</i>
Jan	9,276	9,312	1,722	1,733	15,976	16,138	1.0
Feb	9,287	9,289	1,634	1,589	15,176	14,756	-2.8
Mar	9,295	9,283	1,771	1,774	16,458	16,469	0.1
Apr	9,307	9,281	1,733	1,738	16,125	16,131	
May	9,318	9,269	1,793	1,811	16,707	16,782	0.4
Jun	9,321	9,235	1,710	1,723	15,942	15,913	-0.2
Jul	9,335		1,713		15,995		
Aug	9,331		1,689		15,757		
Sep	9,323		1,623		15,129		
Oct	9,324		1,675		15,615		
Nov	9,333		1,630		15,212		
Dec	9,334		1,703		15,900		
Annual	9,315		20,396		189,992		

<sup>1</sup> 2009 revised.

<sup>2</sup> Includes dry cows, excludes heifers not yet fresh.

<sup>3</sup> Excludes milk sucked by calves.

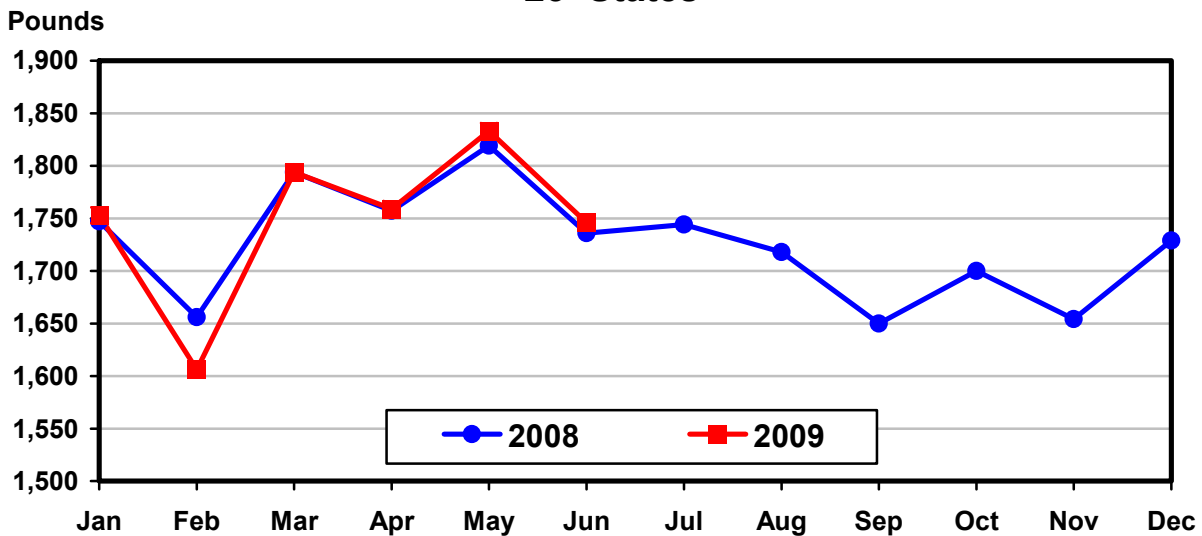
**Milk Cows and Production: By State, June 2008-2009**

State	Milk Cows <sup>1</sup>		Milk Per Cow <sup>2</sup>		Milk Production <sup>2</sup>		
	2008	2009	2008	2009	2008	2009	Change From 2008
	<i>1,000 Head</i>	<i>1,000 Head</i>	<i>Pounds</i>	<i>Pounds</i>	<i>Million Pounds</i>	<i>Million Pounds</i>	<i>Percent</i>
AZ	186	176	1,950	1,940	363	341	-6.1
CA	1,847	1,810	1,850	1,810	3,417	3,276	-4.1
CO	128	126	1,940	1,980	248	249	0.4
FL	120	116	1,440	1,530	173	177	2.3
ID	551	552	1,900	1,880	1,047	1,038	-0.9
IL	102	102	1,565	1,570	160	160	
IN	166	168	1,650	1,655	274	278	1.5
IA	216	215	1,660	1,710	359	368	2.5
KS	116	118	1,680	1,735	195	205	5.1
MI	351	358	1,860	1,890	653	677	3.7
MN	463	469	1,585	1,620	734	760	3.5
MO	110	109	1,240	1,195	136	130	-4.4
NM	340	327	1,970	2,050	670	670	
NY	626	623	1,680	1,720	1,052	1,072	1.9
OH	282	276	1,560	1,570	440	433	-1.6
OR	114	114	1,660	1,625	189	185	-2.1
PA	546	545	1,630	1,630	890	888	-0.2
TX	417	428	1,690	1,710	705	732	3.8
UT	85	83	1,780	1,785	151	148	-2.0
VT	140	135	1,565	1,550	219	209	-4.6
VA	98	96	1,410	1,520	138	146	5.8
WA	244	241	1,970	1,970	481	475	-1.2
WI	1,252	1,257	1,650	1,690	2,066	2,124	2.8
23-State Total	8,500	8,444	1,736	1,746	14,760	14,741	-0.1

<sup>1</sup> Includes dry cows, excludes heifers not yet fresh.

<sup>2</sup> Excludes milk sucked by calves.

**Monthly Milk per Cow  
23 States**



**Milk Cows and Production: By State, May 2008-2009 <sup>1</sup>**

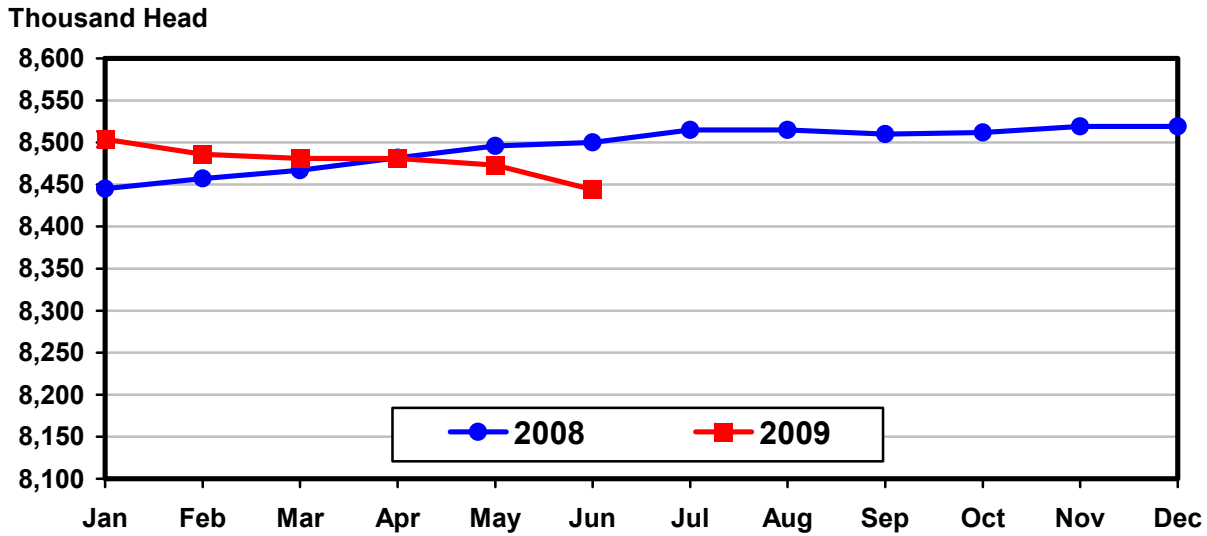
State	Milk Cows <sup>2</sup>		Milk per Cow <sup>3</sup>		Milk Production <sup>3</sup>		
	2008	2009	2008	2009	2008	2009	Change From 2008
	<i>1,000 Head</i>	<i>1,000 Head</i>	<i>Pounds</i>	<i>Pounds</i>	<i>Million Pounds</i>	<i>Million Pounds</i>	<i>Percent</i>
AZ	186	184	2,165	2,055	403	378	-6.2
CA	1,847	1,815	1,940	1,935	3,583	3,512	-2.0
CO	127	128	1,990	2,020	253	259	2.4
FL	120	117	1,625	1,700	195	199	2.1
ID	550	553	1,930	1,910	1,062	1,056	-0.6
IL	102	102	1,665	1,670	170	170	
IN	168	168	1,730	1,765	291	297	2.1
IA	216	215	1,740	1,785	376	384	2.1
KS	115	120	1,790	1,835	206	220	6.8
MI	350	357	1,935	1,955	677	698	3.1
MN	463	469	1,645	1,680	762	788	3.4
MO	111	110	1,365	1,330	152	146	-3.9
NM	342	332	2,040	2,145	698	712	2.0
NY	626	623	1,770	1,820	1,108	1,134	2.3
OH	282	277	1,660	1,640	468	454	-3.0
OR	113	114	1,745	1,735	197	198	0.5
PA	548	547	1,720	1,710	943	935	-0.8
TX	412	430	1,800	1,835	742	789	6.3
UT	85	84	1,800	1,805	153	152	-0.7
VT	140	136	1,600	1,595	224	217	-3.1
VA	98	96	1,580	1,615	155	155	
WA	244	240	2,025	2,015	494	484	-2.0
WI	1,251	1,256	1,710	1,745	2,139	2,192	2.5
23-State Total	8,496	8,473	1,819	1,833	15,451	15,529	0.5

<sup>1</sup> 2009 revised.

<sup>2</sup> Includes dry cows, excludes heifers not yet fresh.

<sup>3</sup> Excludes milk sucked by calves.

**Monthly Milk Cows  
23 States**



**Milk Cows and Production: By State and United States,  
Revised January-March, 2008-2009**

State	Jan-Mar Milk Cows <sup>1</sup>		Jan-Mar Milk Production <sup>2</sup>		Change From 2008
	2008	2009	2008	2009	
	<i>1,000 Head</i>	<i>1,000 Head</i>	<i>Million Pounds</i>	<i>Million Pounds</i>	<i>Percent</i>
AL	12.0	11.0	53	48	-9.4
AK	0.6	0.6	2.1	1.5	-28.6
AZ	185	189	1,144	1,124	-1.7
AR	16.5	13.5	54	45	-16.7
CA	1,840	1,825	10,460	10,094	-3.5
CO	126	128	709	731	3.1
CT	19.0	18.5	93	91	-2.2
DE	6.5	6.5	30.0	28.0	-6.7
FL	120	117	569	582	2.3
GA	77	76	361	376	4.2
HI	2.0	1.5	4.7	5.3	12.8
ID	537	551	2,957	2,915	-1.4
IL	102	102	488	489	0.2
IN	167	167	835	836	0.1
IA	216	215	1,083	1,071	-1.1
KS	115	124	593	652	9.9
KY	91	86	323	313	-3.1
LA	27	24	95	84	-11.6
ME	33	33	147	146	-0.7
MD	57	56	271	260	-4.1
MA	15.0	14.0	64	59	-7.8
MI	344	354	1,907	1,933	1.4
MN	463	468	2,204	2,219	0.7
MS	21	19	86	74	-14.0
MO	110	108	407	403	-1.0
MT	17.0	15.0	76	75	-1.3
NE	57	61	265	294	10.9
NV	27	27	138	146	5.8
NH	15.0	15.0	76	73	-3.9
NJ	10.0	10.0	44	43	-2.3
NM	339	333	1,922	2,002	4.2
NY	626	623	3,092	3,060	-1.0
NC	48	46	239	234	-2.1
ND	26	25	107	98	-8.4
OH	279	277	1,270	1,275	0.4
OK	66	62	277	265	-4.3
OR	114	114	566	558	-1.4
PA	551	550	2,671	2,637	-1.3
RI	1.1	1.1	4.8	4.8	
SC	18.0	17.0	90	86	-4.4
SD	87	94	426	460	8.0
TN	61	58	256	244	-4.7
TX	405	430	2,072	2,271	9.6
UT	85	85	425	427	
VT	140	136	655	616	-6.0
VA	98	97	451	443	-1.8
WA	244	240	1,416	1,350	-4.7
WV	12.0	11.0	46	41	-10.9
WI	1,250	1,255	6,052	6,057	0.1
WY	7.0	5.0	33.6	23.3	-30.7
US <sup>3</sup>	9,286	9,295	47,610	47,363	-0.5

<sup>1</sup> Includes dry cows, excludes heifers not yet fresh.

<sup>2</sup> Excludes milk sucked by calves.

<sup>3</sup> May not add due to rounding.

**Milk Cows and Production: By State and United States,  
Preliminary April-June, 2008-2009**

State	Apr-Jun Milk Cows <sup>1</sup>		Apr-Jun Milk Production <sup>2</sup>		Change From 2008
	2008	2009	2008	2009	
	<i>1,000 Head</i>	<i>1,000 Head</i>	<i>Million Pounds</i>	<i>Million Pounds</i>	<i>Percent</i>
AL	12.0	11.0	51	45	-11.8
AK	0.6	0.6	1.8	1.5	-16.7
AZ	186	183	1,165	1,104	-5.2
AR	15.5	13.0	54	44	-18.5
CA	1,846	1,815	10,515	10,221	-2.8
CO	127	127	744	754	1.3
CT	19.0	18.0	94	90	-4.3
DE	6.5	6.0	29.0	27.0	-6.9
FL	120	117	556	576	3.6
GA	77	77	364	377	3.6
HI	1.7	1.5	4.6	5.5	19.6
ID	548	552	3,114	3,086	-0.9
IL	102	102	495	496	0.2
IN	167	168	849	861	1.4
IA	216	215	1,096	1,120	2.2
KS	115	119	601	638	6.2
KY	92	84	324	320	-1.2
LA	26	23	90	77	-14.4
ME	33	33	154	153	-0.6
MD	56	55	267	256	-4.1
MA	15.0	14.0	66	61	-7.6
MI	349	357	1,968	2,037	3.5
MN	463	469	2,228	2,299	3.2
MS	21.0	18.5	80	70	-12.5
MO	111	110	435	421	-3.2
MT	17.0	15.0	80	76	-5.0
NE	57	62	265	302	14.0
NV	27	26	134	143	6.7
NH	15.0	15.0	77	76	-1.3
NJ	10.0	9.5	44	41	-6.8
NM	341	330	2,049	2,069	1.0
NY	626	623	3,205	3,246	1.3
NC	47	46	233	234	0.4
ND	26	23	107	98	-8.4
OH	282	277	1,352	1,327	-1.8
OK	64	60	268	260	-3.0
OR	113	114	576	574	-0.3
PA	548	547	2,750	2,723	-1.0
RI	1.1	1.1	5.2	5.0	-3.8
SC	18.0	17.0	88	83	-5.7
SD	89	95	446	483	8.3
TN	59	56	255	246	-3.5
TX	413	429	2,173	2,299	5.8
UT	85	84	450	446	-0.9
VT	140	136	661	633	-4.2
VA	98	96	447	453	1.3
WA	244	240	1,451	1,421	-2.1
WV	12.0	11.0	46	42	-8.7
WI	1,251	1,256	6,232	6,382	2.4
WY	7.0	5.0	34.5	23.6	-31.6
US <sup>3</sup>	9,315	9,262	48,774	48,826	0.1

<sup>1</sup> Includes dry cows, excludes heifers not yet fresh.

<sup>2</sup> Excludes milk sucked by calves.

<sup>3</sup> May not add due to rounding.

## Reliability Statement

**Survey Procedures:** Primary data used to determine these estimates were obtained from a sample of producers. Individual States maintain a list of all known milk producers and information on the size of their herd. States use all known sources of producers to ensure that their lists are as complete as possible. Generally, all large producers and a sample of small producers are included in the survey. Questionnaires are mailed to producers near the end of the month to obtain data for the first day of the month. Additional reports are obtained by telephone, as needed, to supplement the mail response. Where feasible, States utilize state and federal administrative data, rather than conduct a monthly or quarterly survey, to estimate milk production. This eliminates duplication of data gathering by different government agencies. Indications of milk cow inventory are also obtained in the January and July Cattle Surveys.

**Estimation Procedures:** State offices prepare these estimates by using a combination of survey indications, historic trends, and any available administrative data. Individual State estimates are reviewed by the Agricultural Statistics Board for reasonableness.

**Revision Policy:** Milk production, rate per cow, and number of cows are subject to revision the following month for monthly States or the following quarter for the quarterly States. Normally, Federal Market Order sales are the main basis for revisions. However, data for all orders are not available in time for this revision. Estimates are again subject to revisions in February each year based on additional administrative data. In the event that additional changes are necessary, a third revision is possible in February the following year. Estimates are again reviewed after data from the five-year Census of Agriculture are available. No revisions are made after that date.

**Reliability:** Since all operations with dairy animals are not included in the sample, survey estimates are subject to sampling variability. Survey results are also subject to non-sampling errors such as omissions, duplications, and mistakes in reporting, recording, and processing the data. The effects of these errors cannot be measured directly. They are minimized through rigid quality controls in the data collection process and through a careful review of all reported data for consistency and reasonableness.

To assist users in evaluating the reliability of the estimates in this report, the "Root Mean Square Error" is shown for selected items on the next page. The "Root Mean Square Error" is a statistical measure based on past performance and is computed using the differences between first and final estimates. The "Root Mean Square Error" for milk cow inventory estimates over the past 20 quarters is 0.3 percent. This means that chances are 2 out of 3 that the final estimate will not be above or below the current estimate of 9.26 million head by more than 0.3 percent. Chances are 9 out of 10 that the difference will not exceed 0.6 percent.

**Reliability of Quarterly Milk Production Estimates <sup>1</sup>**

Item	Root Mean Square Error	90% Confidence Level		Difference Between First and Latest Estimates			Quarters	
				Average	Smallest	Largest	First Above Latest	First Below Latest
				<i>Million Pounds</i>	<i>Million Pounds</i>	<i>Million Pounds</i>	<i>Number</i>	<i>Number</i>
Milk Production	<i>Percent</i> 0.2	<i>Percent</i> 0.3	<i>Million Pounds</i> 148	<i>Million Pounds</i> 63	<i>Million Pounds</i> 3	<i>Million Pounds</i> 192	<i>Number</i> 4	<i>Number</i> 16
All Milk Cows	<i>Percent</i> 0.3	<i>Percent</i> 0.6	<i>1,000 Head</i> 51	<i>1,000 Head</i> 25	<i>1,000 Head</i> 1	<i>1,000 Head</i> 53	<i>Number</i> 2	<i>Number</i> 18

<sup>1</sup> Based on the U.S. total for the past 20 quarters.

**Information Contacts**

Listed below are the commodity specialists in the Livestock Branch of the National Agricultural Statistics Service to contact for additional information.

Dan Kerestes, Chief, Livestock Branch ..... (202) 720-3570

Livestock Section

- Scott Hollis, Head, Livestock Section ..... (202) 690-2424
- Jim Collom - Dairy Products ..... (202) 690-3236
- Joe Gaynor - Dairy Products Prices ..... (202) 690-2168
- Jason Hardegee - Cattle, Cattle on Feed ..... (202) 720-3040
- Sherry Bertramsen - Livestock Slaughter ..... (515) 284-4340
- Everett Olbert - Sheep and Goats ..... (202) 720-4751
- Mike Miller - Milk Production and Milk Cows ..... (202) 720-3278
- Nick Streff - Hogs and Pigs ..... (202) 720-3106



## ACCESS TO REPORTS!!

---

For your convenience, there are several ways to obtain NASS reports, data products, and services:

### INTERNET ACCESS

All NASS reports are available free of charge. For free access, connect to the Internet and go to the NASS Home Page at: [www.nass.usda.gov](http://www.nass.usda.gov).

### E-MAIL SUBSCRIPTION

All NASS reports are available by subscription free of charge direct to your e-mail address. Starting with the NASS Home Page at [www.nass.usda.gov](http://www.nass.usda.gov), under the right navigation, *Receive reports by Email*, click on **National** or **State**. Follow the instructions on the screen.

-----

### PRINTED REPORTS OR DATA PRODUCTS

**CALL OUR TOLL-FREE ORDER DESK: 800-999-6779 (U.S. and Canada)**  
**Other areas, please call 703-605-6220      FAX: 703-605-6900**  
**(Visa, MasterCard, check, or money order acceptable for payment.)**

-----

### ASSISTANCE

For **assistance** with general agricultural statistics or further information about NASS or its products or services, contact the **Agricultural Statistics Hotline** at **800-727-9540**, 7:30 a.m. to 4:00 p.m. ET, or e-mail: [nass@nass.usda.gov](mailto:nass@nass.usda.gov).

The U.S. Department of Agriculture (USDA) prohibits discrimination in all its programs and activities on the basis of race, color, national origin, age, disability, and where applicable, sex, marital status, familial status, parental status, religion, sexual orientation, genetic information, political beliefs, reprisal, or because all or a part of an individual's income is derived from any public assistance program. (Not all prohibited bases apply to all programs.) Persons with disabilities who require alternative means for communication of program information (Braille, large print, audiotape, etc.) should contact USDA's TARGET Center at (202) 720-2600 (voice and TDD).

To file a complaint of discrimination, write to USDA, Director, Office of Civil Rights, 1400 Independence Avenue, S.W., Washington, D.C. 20250-9410, or call (800) 795-3272 (voice) or (202) 720-6382 (TDD). USDA is an equal opportunity provider and employer.