

# Milk Production

Released September 18, 2009, by the National Agricultural Statistics Service (NASS), Agricultural Statistics Board, U.S. Department of Agriculture. For information on *Milk Production* call Mike Miller at 202-720-3278, office hours 7:30 a.m. to 4:00 p.m. ET.

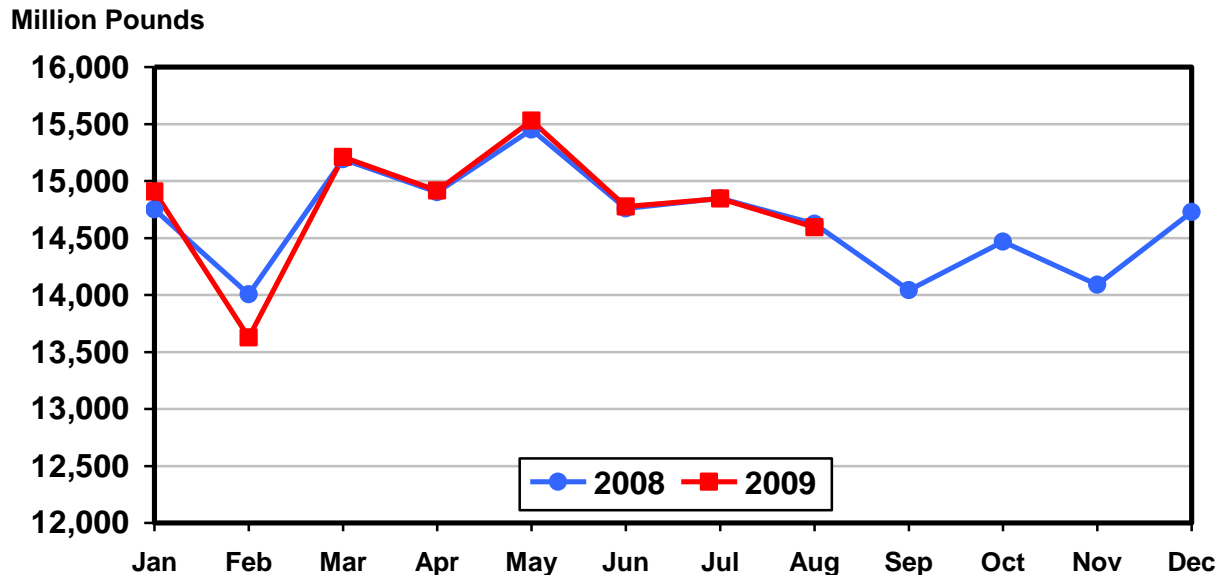
## August Milk Production down 0.2 Percent

**Milk production** in the 23 major States during August totaled 14.6 billion pounds, down 0.2 percent from August 2008. July revised production at 14.8 billion pounds, was down slightly from July 2008. The July revision represented a decrease of 13 million pounds or 0.1 percent from last month's preliminary production estimate.

**Production per cow** in the 23 major States averaged 1,743 pounds for August, 25 pounds above August 2008.

**The number of milk cows** on farms in the 23 major States was 8.37 million head, 143,000 head less than August 2008, and 28,000 head less than July 2009.

## Monthly Milk Production 23 States



**Milk Cows and Production: By Quarter, United States, 2008-2009<sup>1</sup>**

Quarter	Milk Cows <sup>2</sup>		Milk Per Cow <sup>3</sup>		Milk Production <sup>3</sup>		
	2008	2009	2008	2009	2008	2009	Change From 2008
	<i>1,000 Head</i>	<i>1,000 Head</i>	<i>Pounds</i>	<i>Pounds</i>	<i>Million Pounds</i>	<i>Million Pounds</i>	<i>Percent</i>
Jan-Mar	9,286	9,295	5,127	5,096	47,610	47,363	-0.5
Apr-Jun	9,315	9,259	5,236	5,277	48,774	48,860	0.2
Jul-Sep	9,330		5,025		46,881		
Oct-Dec	9,330		5,008		46,727		
Annual	9,315		20,396		189,992		

<sup>1</sup> May not add due to rounding.

<sup>2</sup> Includes dry cows, excludes heifers not yet fresh.

<sup>3</sup> Excludes milk sucked by calves.

**Milk Cows and Production: By Month, 23 Selected States, 2008-2009<sup>1</sup>**

Month	Milk Cows <sup>2</sup>		Milk Per Cow <sup>3</sup>		Milk Production <sup>3</sup>		
	2008	2009	2008	2009	2008	2009	Change from 2008
	<i>1,000 Head</i>	<i>1,000 Head</i>	<i>Pounds</i>	<i>Pounds</i>	<i>Million Pounds</i>	<i>Million Pounds</i>	<i>Percent</i>
Jan	8,445	8,504	1,747	1,753	14,750	14,907	1.1
Feb	8,457	8,486	1,656	1,606	14,007	13,627	-2.7
Mar	8,467	8,481	1,794	1,794	15,191	15,211	0.1
Apr	8,482	8,481	1,757	1,759	14,901	14,916	0.1
May	8,496	8,473	1,819	1,833	15,451	15,529	0.5
Jun	8,500	8,434	1,736	1,752	14,760	14,775	0.1
Jul	8,515	8,400	1,744	1,767	14,848	14,845	
Aug	8,515	8,372	1,718	1,743	14,626	14,594	-0.2
Sep	8,510		1,650		14,041		
Oct	8,512		1,700		14,469		
Nov	8,519		1,654		14,089		
Dec	8,519		1,729		14,728		
Annual	8,495		20,704		175,861		

<sup>1</sup> 2009 previous month revised.

<sup>2</sup> Includes dry cows, excludes heifers not yet fresh.

<sup>3</sup> Excludes milk sucked by calves.

**Estimated Milk Cows and Production: By Month, United States, 2008-2009<sup>1</sup>**

Month	Milk Cows <sup>2</sup>		Milk Per Cow <sup>3</sup>		Milk Production <sup>3</sup>		
	2008	2009	2008	2009	2008	2009	Change From 2008
	<i>1,000 Head</i>	<i>1,000 Head</i>	<i>Pounds</i>	<i>Pounds</i>	<i>Million Pounds</i>	<i>Million Pounds</i>	<i>Percent</i>
Jan	9,276	9,312	1,722	1,733	15,976	16,138	1.0
Feb	9,287	9,289	1,634	1,589	15,176	14,756	-2.8
Mar	9,295	9,283	1,771	1,774	16,458	16,469	0.1
Apr	9,307	9,281	1,733	1,738	16,125	16,131	
May	9,318	9,269	1,793	1,811	16,707	16,782	0.4
Jun	9,321	9,227	1,710	1,728	15,942	15,947	
Jul	9,335	9,190	1,713	1,739	15,995	15,984	-0.1
Aug	9,331	9,160	1,689	1,716	15,757	15,715	-0.3
Sep	9,323		1,623		15,129		
Oct	9,324		1,675		15,615		
Nov	9,333		1,630		15,212		
Dec	9,334		1,703		15,900		
Annual	9,315		20,396		189,992		

<sup>1</sup> 2009 revised.

<sup>2</sup> Includes dry cows, excludes heifers not yet fresh.

<sup>3</sup> Excludes milk sucked by calves.

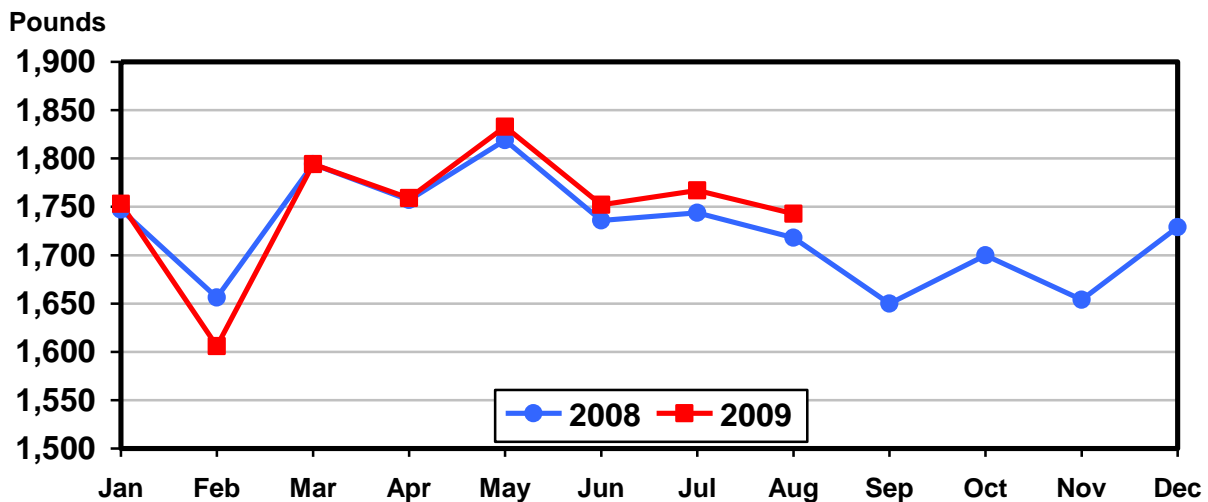
**Milk Cows and Production: By State, August 2008-2009**

State	Milk Cows <sup>1</sup>		Milk Per Cow <sup>2</sup>		Milk Production <sup>2</sup>		
	2008	2009	2008	2009	2008	2009	Change From 2008
	<i>1,000 Head</i>	<i>1,000 Head</i>	<i>Pounds</i>	<i>Pounds</i>	<i>Million Pounds</i>	<i>Million Pounds</i>	<i>Percent</i>
AZ	185	171	1,755	1,760	325	301	-7.4
CA	1,846	1,782	1,840	1,820	3,397	3,243	-4.5
CO	130	123	1,930	1,980	251	244	-2.8
FL	120	114	1,240	1,320	149	150	0.7
ID	555	548	1,970	1,940	1,093	1,063	-2.7
IL	102	102	1,455	1,530	148	156	5.4
IN	166	167	1,605	1,670	266	279	4.9
IA	215	215	1,660	1,700	357	366	2.5
KS	117	116	1,710	1,725	200	200	
MI	352	357	1,860	1,920	655	685	4.6
MN	465	469	1,565	1,620	728	760	4.4
MO	112	106	1,110	1,180	124	125	0.8
NM	337	320	1,920	2,000	647	640	-1.1
NY	626	618	1,690	1,715	1,058	1,060	0.2
OH	280	278	1,520	1,570	426	436	2.3
OR	115	114	1,645	1,665	189	190	0.5
PA	548	545	1,590	1,610	871	877	0.7
TX	425	420	1,605	1,680	682	706	3.5
UT	85	83	1,810	1,835	154	152	-1.3
VT	140	135	1,535	1,520	215	205	-4.7
VA	97	96	1,410	1,460	137	140	2.2
WA	245	236	1,990	2,005	488	473	-3.1
WI	1,252	1,257	1,650	1,705	2,066	2,143	3.7
23-State Total	8,515	8,372	1,718	1,743	14,626	14,594	-0.2

<sup>1</sup> Includes dry cows, excludes heifers not yet fresh.

<sup>2</sup> Excludes milk sucked by calves.

### Monthly Milk per Cow 23 States



**Milk Cows and Production: By State, July 2008-2009 <sup>1</sup>**

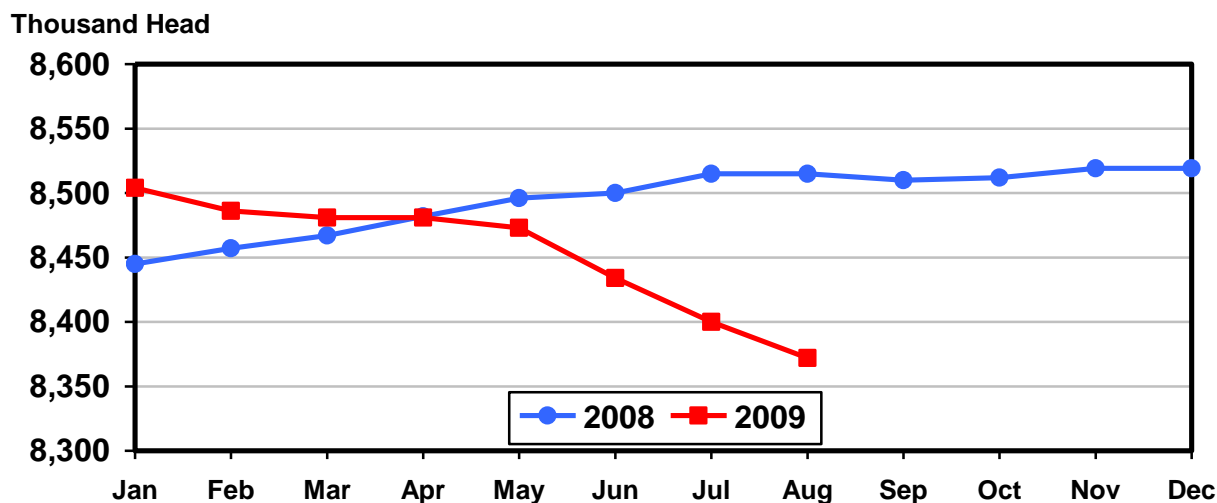
State	Milk Cows <sup>2</sup>		Milk per Cow <sup>3</sup>		Milk Production <sup>3</sup>		
	2008	2009	2008	2009	2008	2009	Change From 2008
	<i>1,000 Head</i>	<i>1,000 Head</i>	<i>Pounds</i>	<i>Pounds</i>	<i>Million Pounds</i>	<i>Million Pounds</i>	<i>Percent</i>
AZ	185	171	1,815	1,800	336	308	-8.3
CA	1,847	1,791	1,850	1,815	3,417	3,251	-4.9
CO	129	124	1,950	2,000	252	248	-1.6
FL	120	115	1,375	1,450	165	167	1.2
ID	556	550	1,960	1,930	1,090	1,062	-2.6
IL	102	102	1,520	1,580	155	161	3.9
IN	166	168	1,650	1,695	274	285	4.0
IA	215	215	1,660	1,740	357	374	4.8
KS	117	117	1,725	1,735	202	203	0.5
MI	352	358	1,900	1,955	669	700	4.6
MN	465	469	1,595	1,670	742	783	5.5
MO	111	108	1,170	1,195	130	129	-0.8
NM	340	321	1,990	2,050	677	658	-2.8
NY	626	621	1,690	1,735	1,058	1,077	1.8
OH	281	278	1,550	1,610	436	448	2.8
OR	115	114	1,670	1,695	192	193	0.5
PA	546	545	1,630	1,640	890	894	0.4
TX	423	423	1,675	1,700	709	719	1.4
UT	85	83	1,840	1,840	156	153	-1.9
VT	140	135	1,585	1,570	222	212	-4.5
VA	97	96	1,425	1,510	138	145	5.1
WA	245	239	2,000	2,015	490	482	-1.6
WI	1,252	1,257	1,670	1,745	2,091	2,193	4.9
23-State Total	8,515	8,400	1,744	1,767	14,848	14,845	

<sup>1</sup> 2009 revised.

<sup>2</sup> Includes dry cows, excludes heifers not yet fresh.

<sup>3</sup> Excludes milk sucked by calves.

## Monthly Milk Cows 23 States



## Reliability Statement

**Survey Procedures:** Primary data used to determine these estimates were obtained from a sample of producers. Individual States maintain a list of all known milk producers and information on the size of their herd. States use all known sources of producers to ensure that their lists are as complete as possible. Generally, all large producers and a sample of small producers are included in the survey. Questionnaires are mailed to producers near the end of the month to obtain data for the first day of the month. Additional reports are obtained by telephone, as needed, to supplement the mail response. Where feasible, States utilize state and federal administrative data, rather than conduct a monthly or quarterly survey, to estimate milk production. This eliminates duplication of data gathering by different government agencies. Indications of milk cow inventory are also obtained in the January and July Cattle Surveys.

**Estimation Procedures:** State offices prepare these estimates by using a combination of survey indications, historic trends, and any available administrative data. Individual State estimates are reviewed by the Agricultural Statistics Board for reasonableness.

**Revision Policy:** Milk production, rate per cow, and number of cows are subject to revision the following month for monthly States or the following quarter for the quarterly States. Normally, Federal Market Order sales are the main basis for revisions. However, data for all orders are not available in time for this revision. Estimates are again subject to revisions in February each year based on additional administrative data. In the event that additional changes are necessary, a third revision is possible in February the following year. Estimates are again reviewed after data from the five-year Census of Agriculture are available. No revisions are made after that date.

**Reliability:** Since all operations with dairy animals are not included in the sample, survey estimates are subject to sampling variability. Survey results are also subject to non-sampling errors such as omissions, duplications, and mistakes in reporting, recording, and processing the data. The effects of these errors cannot be measured directly. They are minimized through rigid quality controls in the data collection process and through a careful review of all reported data for consistency and reasonableness.

To assist users in evaluating the reliability of the estimates in this report, the "Root Mean Square Error" is shown for selected items on the next page. The "Root Mean Square Error" is a statistical measure based on past performance and is computed using the differences between first and final estimates. The "Root Mean Square Error" for the 23 State milk cow inventory estimates over the past 24 months is 0.5 percent. This means that chances are 2 out of 3 that the final estimate will not be above or below the current estimate of 8.37 million head by more than 0.5 percent. Chances are 9 out of 10 that the difference will not exceed 0.8 percent.

**Reliability of Monthly Milk Production Estimates <sup>1</sup>**

Item	Root Mean Square Error	90% Confidence Level		Difference Between First and Latest Estimates			Months	
				Average	Smallest	Largest	First Above Latest	First Below Latest
				Million Pounds	Million Pounds	Million Pounds	Number	Number
Milk Production	<i>Percent</i> 0.2	<i>Percent</i> 0.4	<i>Million Pounds</i> 59	<i>Million Pounds</i> 27	<i>Million Pounds</i> 3	<i>Million Pounds</i> 102	<i>Number</i> 3	<i>Number</i> 21
All Milk Cows	<i>Percent</i> 0.5	<i>Percent</i> 0.8	<i>1,000 Head</i> 66	<i>1,000 Head</i> 33	<i>1,000 Head</i> 0	<i>1,000 Head</i> 55	<i>Number</i> 4	<i>Number</i> 19

<sup>1</sup> Based on the 23 State total for the past 24 months.

**Information Contacts**

Listed below are the commodity specialists in the Livestock Branch of the National Agricultural Statistics Service to contact for additional information.

Dan Kerestes, Chief, Livestock Branch ..... (202) 720-3570

Livestock Section

Scott Hollis, Head, Livestock Section ..... (202) 690-2424  
 Jim Collom - Dairy Products ..... (202) 690-3236  
 Joe Gaynor - Dairy Products Prices ..... (202) 690-2168  
 Jason Hardegree - Cattle, Cattle on Feed ..... (202) 720-3040  
 Sherry Bertramsen - Livestock Slaughter ..... (515) 284-4340  
 Everett Olbert - Sheep and Goats ..... (202) 720-4751  
 Mike Miller - Milk Production and Milk Cows ..... (202) 720-3278  
 Nick Streff - Hogs and Pigs ..... (202) 720-3106

## ACCESS TO REPORTS!!

---

For your convenience, there are several ways to obtain NASS reports, data products, and services:

### INTERNET ACCESS

All NASS reports are available free of charge. For free access, connect to the Internet and go to the NASS Home Page at: [www.nass.usda.gov](http://www.nass.usda.gov).

### E-MAIL SUBSCRIPTION

All NASS reports are available by subscription free of charge direct to your e-mail address. Starting with the NASS Home Page at [www.nass.usda.gov](http://www.nass.usda.gov), under the right navigation, *Receive reports by Email*, click on **National** or **State**. Follow the instructions on the screen.

-----

### PRINTED REPORTS OR DATA PRODUCTS

**CALL OUR TOLL-FREE ORDER DESK: 800-999-6779 (U.S. and Canada)**  
**Other areas, please call 703-605-6220      FAX: 703-605-6900**  
**(Visa, MasterCard, check, or money order acceptable for payment.)**

-----

### ASSISTANCE

For **assistance** with general agricultural statistics or further information about NASS or its products or services, contact the **Agricultural Statistics Hotline** at **800-727-9540**, 7:30 a.m. to 4:00 p.m. ET, or e-mail: [nass@nass.usda.gov](mailto:nass@nass.usda.gov).

The U.S. Department of Agriculture (USDA) prohibits discrimination in all its programs and activities on the basis of race, color, national origin, age, disability, and where applicable, sex, marital status, familial status, parental status, religion, sexual orientation, genetic information, political beliefs, reprisal, or because all or a part of an individual's income is derived from any public assistance program. (Not all prohibited bases apply to all programs.) Persons with disabilities who require alternative means for communication of program information (Braille, large print, audiotape, etc.) should contact USDA's TARGET Center at (202) 720-2600 (voice and TDD).

To file a complaint of discrimination, write to USDA, Director, Office of Civil Rights, 1400 Independence Avenue, S.W., Washington, D.C. 20250-9410, or call (800) 795-3272 (voice) or (202) 720-6382 (TDD). USDA is an equal opportunity provider and employer.

**USDA Data Users' Meeting  
Monday, November 2, 2009**

**Crowne Plaza Hotel Chicago-Metro  
Chicago, Illinois 60661  
(312) 829-5000**

The USDA's National Agricultural Statistics Service will be organizing an open forum for data users. The purpose will be to provide updates on pending changes in the various statistical and information programs and seeks comments and input from data users. Other USDA agencies to be represented will include the Agricultural Marketing Service, the Economic Research Service, the Foreign Agricultural Service, and World Agricultural Outlook Board. The Foreign Trade Division from the Census Bureau will also be included in the meeting.

For registration details or additional information for the Data Users' Meeting, see the NASS homepage at [www.nass.usda.gov/forum/](http://www.nass.usda.gov/forum/) or contact Marjorie Taylor (NASS) at (202) 690-8141 or at [marjorie\\_taylor@nass.usda.gov](mailto:marjorie_taylor@nass.usda.gov).

This Data Users' Meeting precedes an Industry Outlook Conference that will be held at the same location on Tuesday, November 3, 2009. The Outlook Conference brings together analysts from various commodity sectors to discuss the outlook situation. For registration details or additional information for the Industry Outlook Meeting see the Livestock and Marketing Information Center (LMIC) homepage at [www.lmic.info](http://www.lmic.info) or contact Jim Robb at (720) 544-2941 or at [robb@lmic.info](mailto:robb@lmic.info).