

# Milk Production

Released October 20, 2009, by the National Agricultural Statistics Service (NASS), Agricultural Statistics Board, U.S. Department of Agriculture. For information on *Milk Production* call Mike Miller at 202-720-3278, office hours 7:30 a.m. to 4:00 p.m. ET.

## September Milk Production down 0.7 Percent

**Milk production** in the 23 major States during September totaled 13.9 billion pounds, down 0.7 percent from September 2008. August revised production at 14.6 billion pounds, was down 0.1 percent from August 2008. The August revision represented an increase of 23 million pounds or 0.2 percent from last month's preliminary production estimate.

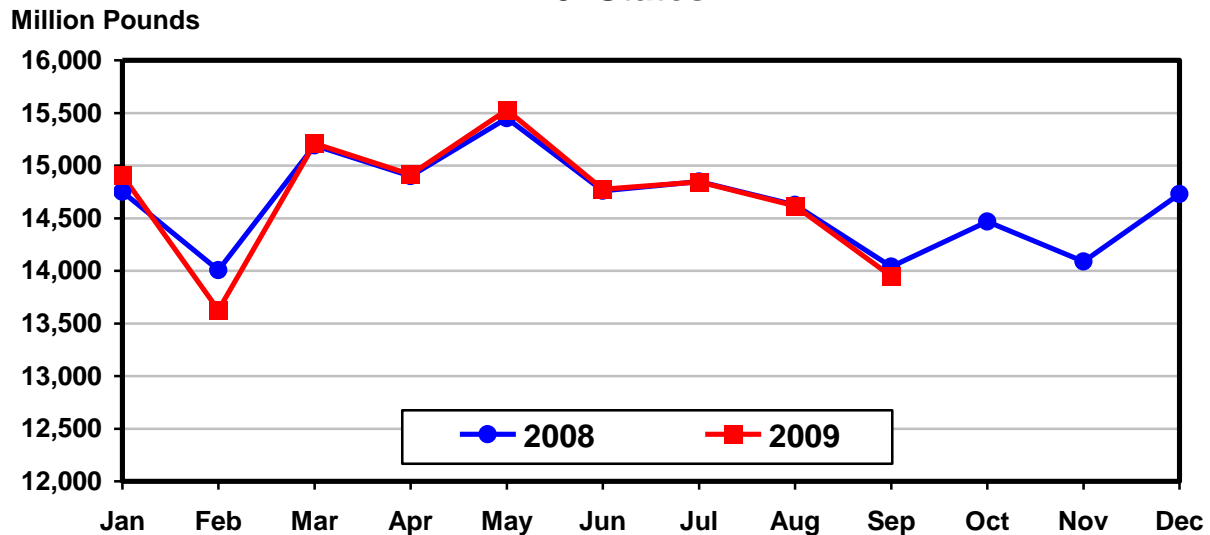
**Production per cow** in the 23 major States averaged 1,672 pounds for September, 22 pounds above September 2008.

**The number of milk cows** on farms in the 23 major States was 8.34 million head, 168,000 head less than September 2008, and 32,000 head less than August 2009.

## July - September Milk Production down 0.3 Percent

Milk production in the U.S. during the July - September quarter totaled 46.8 billion pounds, down 0.3 percent from the July - September quarter last year. The average number of milk cows in the U.S. during the quarter was 9.16 million head, 171,000 head less than the same period last year.

## Monthly Milk Production 23 States



**Milk Cows and Production: By Quarter, United States, 2008-2009<sup>1</sup>**

Quarter	Milk Cows <sup>2</sup>		Milk Per Cow <sup>3</sup>		Milk Production <sup>3</sup>		
	2008	2009	2008	2009	2008	2009	Change From 2008
	<i>1,000 Head</i>	<i>1,000 Head</i>	<i>Pounds</i>	<i>Pounds</i>	<i>Million Pounds</i>	<i>Million Pounds</i>	<i>Percent</i>
Jan-Mar	9,286	9,295	5,127	5,096	47,610	47,363	-0.5
Apr-Jun	9,315	9,260	5,236	5,278	48,774	48,874	0.2
Jul-Sep	9,330	9,159	5,025	5,105	46,881	46,758	-0.3
Oct-Dec	9,330		5,008		46,727		
Annual	9,315		20,396		189,992		

<sup>1</sup> May not add due to rounding.

<sup>2</sup> Includes dry cows, excludes heifers not yet fresh.

<sup>3</sup> Excludes milk sucked by calves.

**Milk Cows and Production: By Month, 23 Selected States, 2008-2009<sup>1</sup>**

Month	Milk Cows <sup>2</sup>		Milk Per Cow <sup>3</sup>		Milk Production <sup>3</sup>		
	2008	2009	2008	2009	2008	2009	Change from 2008
	<i>1,000 Head</i>	<i>1,000 Head</i>	<i>Pounds</i>	<i>Pounds</i>	<i>Million Pounds</i>	<i>Million Pounds</i>	<i>Percent</i>
Jan	8,445	8,504	1,747	1,753	14,750	14,907	1.1
Feb	8,457	8,486	1,656	1,606	14,007	13,627	-2.7
Mar	8,467	8,481	1,794	1,794	15,191	15,211	0.1
Apr	8,482	8,481	1,757	1,759	14,901	14,916	0.1
May	8,496	8,473	1,819	1,833	15,451	15,529	0.5
Jun	8,500	8,434	1,736	1,752	14,760	14,775	0.1
Jul	8,515	8,400	1,744	1,767	14,848	14,845	
Aug	8,515	8,374	1,718	1,746	14,626	14,617	-0.1
Sep	8,510	8,342	1,650	1,672	14,041	13,949	-0.7
Oct	8,512		1,700		14,469		
Nov	8,519		1,654		14,089		
Dec	8,519		1,729		14,728		
Annual	8,495		20,704		175,861		

<sup>1</sup> 2009 previous month revised.

<sup>2</sup> Includes dry cows, excludes heifers not yet fresh.

<sup>3</sup> Excludes milk sucked by calves.

**Estimated Milk Cows and Production: By Month, United States, 2008-2009<sup>1</sup>**

Month	Milk Cows <sup>2</sup>		Milk Per Cow <sup>3</sup>		Milk Production <sup>3</sup>		
	2008	2009	2008	2009	2008	2009	Change From 2008
	<i>1,000 Head</i>	<i>1,000 Head</i>	<i>Pounds</i>	<i>Pounds</i>	<i>Million Pounds</i>	<i>Million Pounds</i>	<i>Percent</i>
Jan	9,276	9,312	1,722	1,733	15,976	16,138	1.0
Feb	9,287	9,289	1,634	1,589	15,176	14,756	-2.8
Mar	9,295	9,283	1,771	1,774	16,458	16,469	0.1
Apr	9,307	9,282	1,733	1,738	16,125	16,135	0.1
May	9,318	9,270	1,793	1,811	16,707	16,785	0.5
Jun	9,321	9,228	1,710	1,729	15,942	15,954	0.1
Jul	9,335	9,190	1,713	1,740	15,995	15,989	
Aug	9,331	9,162	1,689	1,718	15,757	15,743	-0.1
Sep	9,323	9,126	1,623	1,647	15,129	15,026	-0.7
Oct	9,324		1,675		15,615		
Nov	9,333		1,630		15,212		
Dec	9,334		1,703		15,900		
Annual	9,315		20,396		189,992		

<sup>1</sup> 2009 revised.

<sup>2</sup> Includes dry cows, excludes heifers not yet fresh.

<sup>3</sup> Excludes milk sucked by calves.

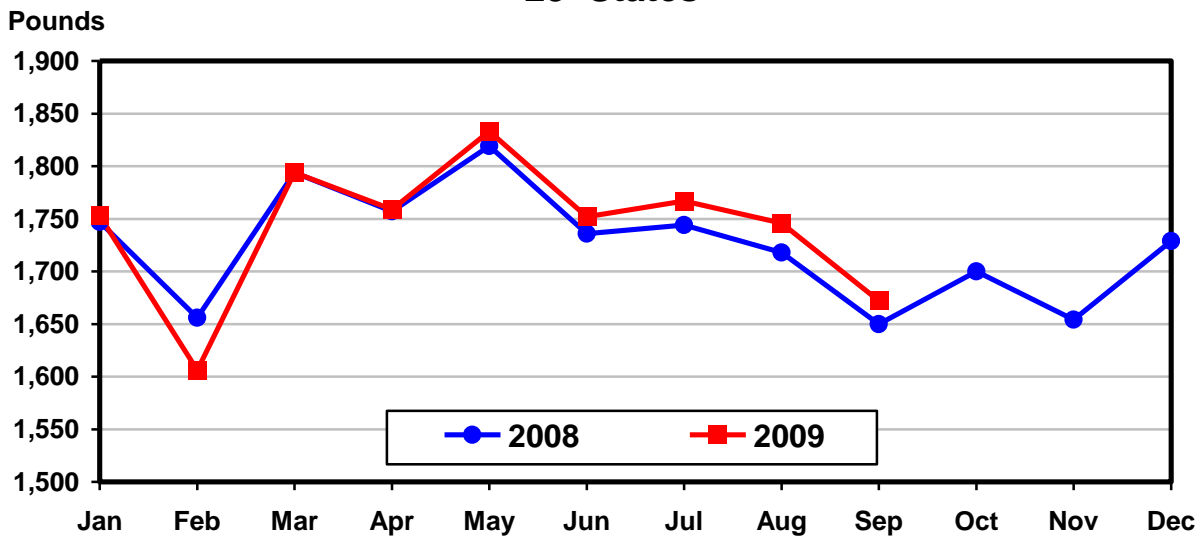
**Milk Cows and Production: By State, September 2008-2009**

State	Milk Cows <sup>1</sup>		Milk Per Cow <sup>2</sup>		Milk Production <sup>2</sup>		
	2008	2009	2008	2009	2008	2009	Change From 2008
	<i>1,000 Head</i>	<i>1,000 Head</i>	<i>Pounds</i>	<i>Pounds</i>	<i>Million Pounds</i>	<i>Million Pounds</i>	<i>Percent</i>
AZ	185	167	1,710	1,690	316	282	-10.8
CA	1,845	1,772	1,775	1,730	3,275	3,066	-6.4
CO	130	119	1,850	1,880	241	224	-7.1
FL	120	114	1,160	1,200	139	137	-1.4
ID	554	547	1,870	1,850	1,036	1,012	-2.3
IL	102	102	1,425	1,480	145	151	4.1
IN	166	168	1,550	1,620	257	272	5.8
IA	215	215	1,630	1,630	350	350	
KS	117	114	1,665	1,675	195	191	-2.1
MI	352	356	1,790	1,835	630	653	3.7
MN	465	469	1,490	1,535	693	720	3.9
MO	111	105	1,100	1,110	122	117	-4.1
NM	336	318	1,880	1,980	632	630	-0.3
NY	626	617	1,590	1,590	995	981	-1.4
OH	279	278	1,450	1,520	405	423	4.4
OR	115	114	1,590	1,605	183	183	
PA	548	542	1,530	1,560	838	846	1.0
TX	425	416	1,550	1,660	659	691	4.9
UT	85	83	1,740	1,760	148	146	-1.4
VT	139	134	1,470	1,485	204	199	-2.5
VA	97	96	1,360	1,395	132	134	1.5
WA	245	238	1,900	1,930	466	459	-1.5
WI	1,253	1,258	1,580	1,655	1,980	2,082	5.2
23-State Total	8,510	8,342	1,650	1,672	14,041	13,949	-0.7

<sup>1</sup> Includes dry cows, excludes heifers not yet fresh.

<sup>2</sup> Excludes milk sucked by calves.

**Monthly Milk per Cow  
23 States**



**Milk Cows and Production: By State, August 2008-2009 <sup>1</sup>**

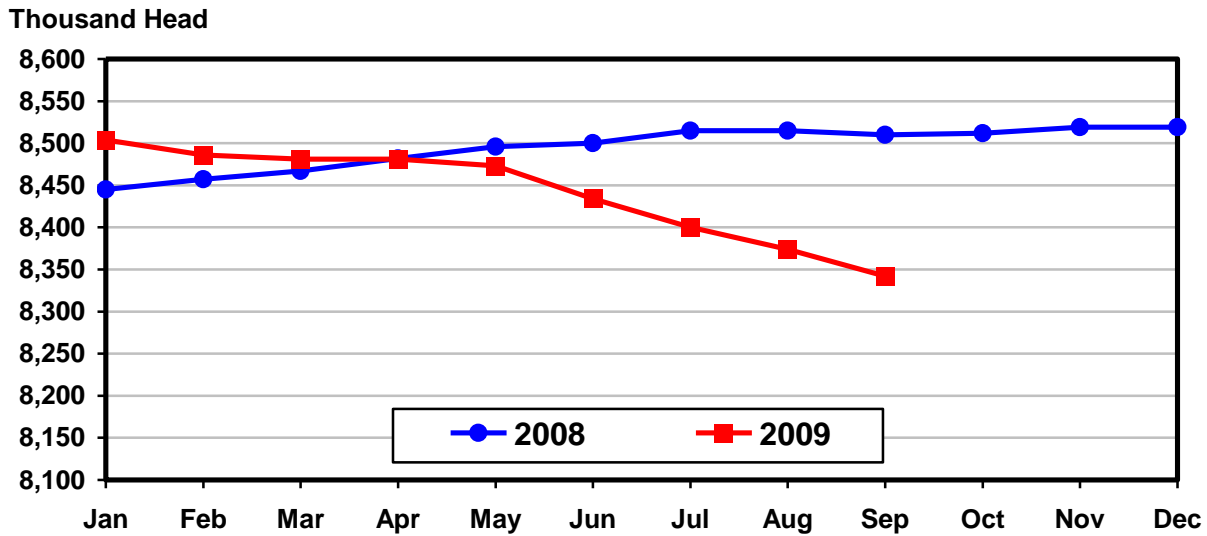
State	Milk Cows <sup>2</sup>		Milk per Cow <sup>3</sup>		Milk Production <sup>3</sup>		
	2008	2009	2008	2009	2008	2009	Change From 2008
	<i>1,000 Head</i>	<i>1,000 Head</i>	<i>Pounds</i>	<i>Pounds</i>	<i>Million Pounds</i>	<i>Million Pounds</i>	<i>Percent</i>
AZ	185	171	1,755	1,790	325	306	-5.8
CA	1,846	1,782	1,840	1,820	3,397	3,243	-4.5
CO	130	123	1,930	1,980	251	244	-2.8
FL	120	114	1,240	1,325	149	151	1.3
ID	555	548	1,970	1,940	1,093	1,063	-2.7
IL	102	102	1,455	1,530	148	156	5.4
IN	166	167	1,605	1,670	266	279	4.9
IA	215	215	1,660	1,700	357	366	2.5
KS	117	117	1,710	1,745	200	204	2.0
MI	352	357	1,860	1,920	655	685	4.6
MN	465	469	1,565	1,620	728	760	4.4
MO	112	106	1,110	1,180	124	125	0.8
NM	337	320	1,920	2,000	647	640	-1.1
NY	626	618	1,690	1,690	1,058	1,044	-1.3
OH	280	278	1,520	1,570	426	436	2.3
OR	115	114	1,645	1,650	189	188	-0.5
PA	548	545	1,590	1,610	871	877	0.7
TX	425	420	1,605	1,680	682	706	3.5
UT	85	83	1,810	1,835	154	152	-1.3
VT	140	135	1,535	1,520	215	205	-4.7
VA	97	96	1,410	1,450	137	139	1.5
WA	245	237	1,990	1,995	488	473	-3.1
WI	1,252	1,257	1,650	1,730	2,066	2,175	5.3
23-State Total	8,515	8,374	1,718	1,746	14,626	14,617	-0.1

<sup>1</sup> 2009 revised.

<sup>2</sup> Includes dry cows, excludes heifers not yet fresh.

<sup>3</sup> Excludes milk sucked by calves.

**Monthly Milk Cows  
23 States**



**Milk Cows and Production: By State and United States,  
Revised April-June, 2008-2009**

State	Apr-Jun Milk Cows <sup>1</sup>		Apr-Jun Milk Production <sup>2</sup>		Change From 2008
	2008	2009	2008	2009	
	<i>1,000 Head</i>	<i>1,000 Head</i>	<i>Million Pounds</i>	<i>Million Pounds</i>	<i>Percent</i>
AL	12.0	11.0	51	45	-11.8
AK	0.6	0.6	1.8	1.5	-16.7
AZ	186	183	1,165	1,104	-5.2
AR	15.5	13.0	54	45	-16.7
CA	1,846	1,813	10,515	10,228	-2.7
CO	127	127	744	752	1.1
CT	19.0	18.0	94	90	-4.3
DE	6.5	6.0	29.0	27.0	-6.9
FL	120	117	556	577	3.8
GA	77	77	364	377	3.6
HI	1.7	1.5	4.6	5.5	19.6
ID	548	551	3,114	3,080	-1.1
IL	102	102	495	496	0.2
IN	167	168	849	861	1.4
IA	216	215	1,096	1,120	2.2
KS	115	119	601	638	6.2
KY	92	84	324	320	-1.2
LA	26	23	90	77	-14.4
ME	33	33	154	152	-1.3
MD	56	56	267	262	-1.9
MA	15.0	14.0	66	61	-7.6
MI	349	357	1,968	2,037	3.5
MN	463	469	2,228	2,303	3.4
MS	21.0	18.5	80	70	-12.5
MO	111	110	435	421	-3.2
MT	17.0	15.0	80	76	-5.0
NE	57	62	265	306	15.5
NV	27	26	134	143	6.7
NH	15.0	15.0	77	76	-1.3
NJ	10.0	9.5	44	43	-2.3
NM	341	330	2,049	2,069	1.0
NY	626	623	3,205	3,258	1.7
NC	47	46	233	235	0.9
ND	26	23	107	98	-8.4
OH	282	277	1,352	1,332	-1.5
OK	64	60	268	260	-3.0
OR	113	114	576	580	0.7
PA	548	547	2,750	2,723	-1.0
RI	1.1	1.1	5.2	5.0	-3.8
SC	18.0	17.0	88	85	-3.4
SD	89	95	446	483	8.3
TN	59	56	255	246	-3.5
TX	413	429	2,173	2,299	5.8
UT	85	84	450	446	-0.9
VT	140	136	661	633	-4.2
VA	98	96	447	451	0.9
WA	244	240	1,451	1,417	-2.3
WV	12.0	11.0	46	42	-8.7
WI	1,251	1,256	6,232	6,395	2.6
WY	7.0	5.0	34.5	22.9	-33.6
US <sup>3</sup>	9,315	9,260	48,774	48,874	0.2

<sup>1</sup> Includes dry cows, excludes heifers not yet fresh.

<sup>2</sup> Excludes milk sucked by calves.

<sup>3</sup> May not add due to rounding.

**Milk Cows and Production: By State and United States,  
Preliminary July-September, 2008-2009**

State	Jul-Sep Milk Cows <sup>1</sup>		Jul-Sep Milk Production <sup>2</sup>		Change From 2008
	2008	2009	2008	2009	
	<i>1,000 Head</i>	<i>1,000 Head</i>	<i>Million Pounds</i>	<i>Million Pounds</i>	<i>Percent</i>
AL	12.0	11.0	38	35	-7.9
AK	0.6	0.6	1.7	1.5	-11.8
AZ	185	170	977	896	-8.3
AR	14.5	13.0	44	38	-13.6
CA	1,846	1,782	10,089	9,560	-5.2
CO	130	122	744	716	-3.8
CT	19.0	18.0	88	86	-2.3
DE	6.5	5.5	25.0	23.0	-8.0
FL	120	114	453	455	0.4
GA	75	77	305	319	4.6
HI	1.6	1.5	4.4	5.2	18.2
ID	555	548	3,219	3,137	-2.5
IL	102	102	448	468	4.5
IN	166	168	797	836	4.9
IA	215	215	1,064	1,090	2.4
KS	117	116	597	598	0.2
KY	88	83	272	280	2.9
LA	26	22	66	56	-15.2
ME	33	33	154	152	-1.3
MD	56	55	242	238	-1.7
MA	14.5	13.5	63	57	-9.5
MI	352	357	1,954	2,038	4.3
MN	465	469	2,163	2,263	4.6
MS	20.0	17.5	62	51	-17.7
MO	111	106	376	371	-1.3
MT	17.0	15.0	80	75	-6.3
NE	59	61	272	306	12.5
NV	27	25	140	136	-2.9
NH	15.0	15.0	74	73	-1.4
NJ	10.0	9.5	39	40	2.6
NM	338	320	1,956	1,928	-1.4
NY	626	619	3,111	3,102	-0.3
NC	46	45	207	207	
ND	26	22	104	95	-8.7
OH	280	278	1,267	1,307	3.2
OK	63	58	261	238	-8.8
OR	115	114	564	564	
PA	547	544	2,599	2,617	0.7
RI	1.1	1.1	5.0	4.8	-4.0
SC	18.0	17.5	70	72	2.9
SD	91	95	458	481	5.0
TN	58	55	212	212	
TX	424	420	2,050	2,116	3.2
UT	85	83	458	451	-1.5
VT	140	135	641	616	-3.9
VA	97	96	407	418	2.7
WA	245	238	1,444	1,414	-2.1
WV	12.0	11.0	45	41	-8.9
WI	1,252	1,257	6,137	6,450	5.1
WY	7.0	5.0	34.1	24.2	-29.0
US <sup>3</sup>	9,330	9,159	46,881	46,758	-0.3

<sup>1</sup> Includes dry cows, excludes heifers not yet fresh.

<sup>2</sup> Excludes milk sucked by calves.

<sup>3</sup> May not add due to rounding.

## Reliability Statement

**Survey Procedures:** Primary data used to determine these estimates were obtained from a sample of producers. Individual States maintain a list of all known milk producers and information on the size of their herd. States use all known sources of producers to ensure that their lists are as complete as possible. Generally, all large producers and a sample of small producers are included in the survey. Questionnaires are mailed to producers near the end of the month to obtain data for the first day of the month. Additional reports are obtained by telephone, as needed, to supplement the mail response. Where feasible, States utilize state and federal administrative data, rather than conduct a monthly or quarterly survey, to estimate milk production. This eliminates duplication of data gathering by different government agencies. Indications of milk cow inventory are also obtained in the January and July Cattle Surveys.

**Estimation Procedures:** State offices prepare these estimates by using a combination of survey indications, historic trends, and any available administrative data. Individual State estimates are reviewed by the Agricultural Statistics Board for reasonableness.

**Revision Policy:** Milk production, rate per cow, and number of cows are subject to revision the following month for monthly States or the following quarter for the quarterly States. Normally, Federal Market Order sales are the main basis for revisions. However, data for all orders are not available in time for this revision. Estimates are again subject to revisions in February each year based on additional administrative data. In the event that additional changes are necessary, a third revision is possible in February the following year. Estimates are again reviewed after data from the five-year Census of Agriculture are available. No revisions are made after that date.

**Reliability:** Since all operations with dairy animals are not included in the sample, survey estimates are subject to sampling variability. Survey results are also subject to non-sampling errors such as omissions, duplications, and mistakes in reporting, recording, and processing the data. The effects of these errors cannot be measured directly. They are minimized through rigid quality controls in the data collection process and through a careful review of all reported data for consistency and reasonableness.

To assist users in evaluating the reliability of the estimates in this report, the "Root Mean Square Error" is shown for selected items on the next page. The "Root Mean Square Error" is a statistical measure based on past performance and is computed using the differences between first and final estimates. The "Root Mean Square Error" for milk cow inventory estimates over the past 20 quarters is 0.3 percent. This means that chances are 2 out of 3 that the final estimate will not be above or below the current estimate of 9.16 million head by more than 0.3 percent. Chances are 9 out of 10 that the difference will not exceed 0.6 percent.

**Reliability of Quarterly Milk Production Estimates <sup>1</sup>**

Item	Root Mean Square Error	90% Confidence Level		Difference Between First and Latest Estimates			Quarters	
				Average	Smallest	Largest	First Above Latest	First Below Latest
				<i>Million Pounds</i>	<i>Million Pounds</i>	<i>Million Pounds</i>	<i>Number</i>	<i>Number</i>
Milk Production	<i>Percent</i> 0.2	<i>Percent</i> 0.3	<i>Million Pounds</i> 131	<i>Million Pounds</i> 58	<i>Million Pounds</i> 3	<i>Million Pounds</i> 192	<i>Number</i> 4	<i>Number</i> 16
All Milk Cows	<i>Percent</i> 0.3	<i>Percent</i> 0.6	<i>1,000 Head</i> 51	<i>1,000 Head</i> 25	<i>1,000 Head</i> 1	<i>1,000 Head</i> 53	<i>Number</i> 3	<i>Number</i> 17

<sup>1</sup> Based on the U.S. total for the past 20 quarters.

**Information Contacts**

Listed below are the commodity specialists in the Livestock Branch of the National Agricultural Statistics Service to contact for additional information.

Dan Kerestes, Chief, Livestock Branch ..... (202) 720-3570

Livestock Section

Scott Hollis, Head, Livestock Section ..... (202) 690-2424  
 Jim Collom - Dairy Products ..... (202) 690-3236  
 Joe Gaynor - Dairy Products Prices ..... (202) 690-2168  
 Jason Hardegee - Cattle, Cattle on Feed ..... (202) 720-3040  
 Sherry Bertramsen - Livestock Slaughter ..... (515) 284-4340  
 Everett Olbert - Sheep and Goats ..... (202) 720-4751  
 Mike Miller - Milk Production and Milk Cows ..... (202) 720-3278  
 Nick Streff - Hogs and Pigs ..... (202) 720-3106



## ACCESS TO REPORTS!!

---

For your convenience, there are several ways to obtain NASS reports, data products, and services:

### INTERNET ACCESS

All NASS reports are available free of charge. For free access, connect to the Internet and go to the NASS Home Page at: [www.nass.usda.gov](http://www.nass.usda.gov).

### E-MAIL SUBSCRIPTION

All NASS reports are available by subscription free of charge direct to your e-mail address. Starting with the NASS Home Page at [www.nass.usda.gov](http://www.nass.usda.gov), under the right navigation, *Receive reports by Email*, click on **National** or **State**. Follow the instructions on the screen.

-----

### PRINTED REPORTS OR DATA PRODUCTS

**CALL OUR TOLL-FREE ORDER DESK: 800-999-6779 (U.S. and Canada)**  
**Other areas, please call 703-605-6220      FAX: 703-605-6880**  
**(Visa, MasterCard, check, or money order acceptable for payment.)**

-----

### ASSISTANCE

For **assistance** with general agricultural statistics or further information about NASS or its products or services, contact the **Agricultural Statistics Hotline** at **800-727-9540**, 7:30 a.m. to 4:00 p.m. ET, or e-mail: [nass@nass.usda.gov](mailto:nass@nass.usda.gov).

The U.S. Department of Agriculture (USDA) prohibits discrimination in all its programs and activities on the basis of race, color, national origin, age, disability, and where applicable, sex, marital status, familial status, parental status, religion, sexual orientation, genetic information, political beliefs, reprisal, or because all or a part of an individual's income is derived from any public assistance program. (Not all prohibited bases apply to all programs.) Persons with disabilities who require alternative means for communication of program information (Braille, large print, audiotape, etc.) should contact USDA's TARGET Center at (202) 720-2600 (voice and TDD).

To file a complaint of discrimination, write to USDA, Director, Office of Civil Rights, 1400 Independence Avenue, S.W., Washington, D.C. 20250-9410, or call (800) 795-3272 (voice) or (202) 720-6382 (TDD). USDA is an equal opportunity provider and employer.

**USDA Data Users' Meeting  
Monday, November 2, 2009**

**Crowne Plaza Hotel Chicago-Metro  
Chicago, Illinois 60661  
(312) 829-5000**

The USDA's National Agricultural Statistics Service will be organizing an open forum for data users. The purpose will be to provide updates on pending changes in the various statistical and information programs and seeks comments and input from data users. Other USDA agencies to be represented will include the Agricultural Marketing Service, the Economic Research Service, the Foreign Agricultural Service, and World Agricultural Outlook Board. The Foreign Trade Division from the Census Bureau will also be included in the meeting.

For registration details or additional information for the Data Users' Meeting, see the NASS homepage at [www.nass.usda.gov/forum/](http://www.nass.usda.gov/forum/) or contact Marjorie Taylor (NASS) at (202) 690-8141 or at [marjorie\\_taylor@nass.usda.gov](mailto:marjorie_taylor@nass.usda.gov).

This Data Users' Meeting precedes an Industry Outlook Conference that will be held at the same location on Tuesday, November 3, 2009. The Outlook Conference brings together analysts from various commodity sectors to discuss the outlook situation. For registration details or additional information for the Industry Outlook Meeting see the Livestock and Marketing Information Center (LMIC) homepage at [www.lmic.info](http://www.lmic.info) or contact Jim Robb at (720) 544-2941 or at [robb@lmic.info](mailto:robb@lmic.info).