

Milk Production

Released January 19, 2010, by the National Agricultural Statistics Service (NASS), Agricultural Statistics Board, U.S. Department of Agriculture. For information on *Milk Production* call Mike Miller at 202-720-3278, office hours 7:30 a.m. to 4:00 p.m. ET.

December Milk Production down 0.8 Percent

Milk production in the 23 major States during December totaled 14.6 billion pounds, down 0.8 percent from December 2008. November revised production at 14.0 billion pounds, was down 0.8 percent from November 2008. The November revision represented an increase of 24 million pounds or 0.2 percent from last month's preliminary production estimate.

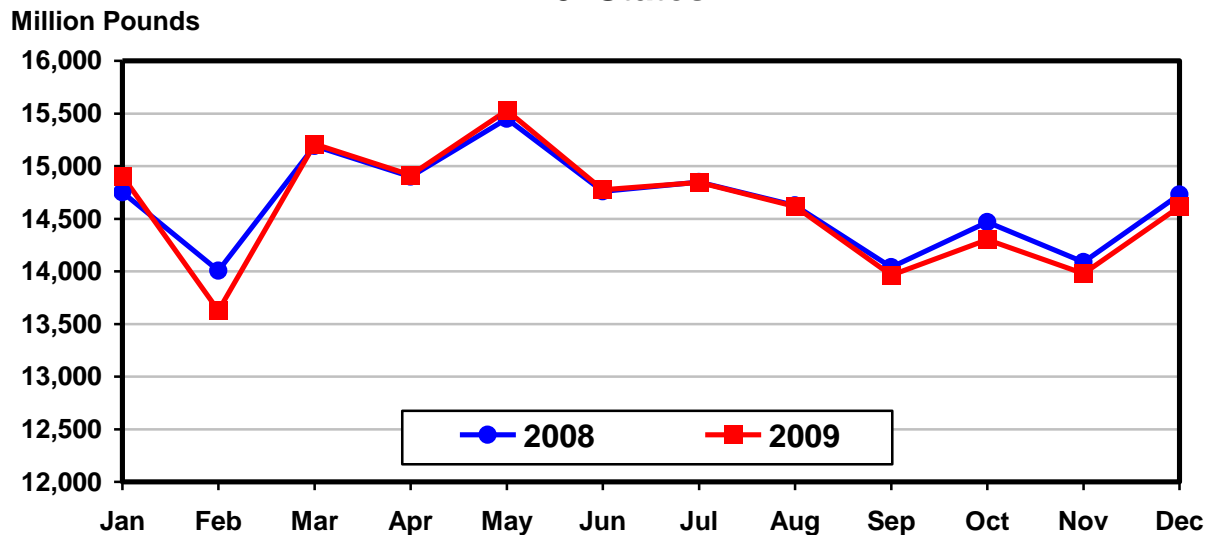
Production per cow in the 23 major States averaged 1,758 pounds for December, 29 pounds above December 2008.

The number of milk cows on farms in the 23 major States was 8.31 million head, 206,000 head less than December 2008, and unchanged from November 2009.

October - December Milk Production down 1.0 Percent

Milk production in the U.S. during the October - December quarter totaled 46.2 billion pounds, down 1.0 percent from the October - December quarter last year. The average number of milk cows in the U.S. during the quarter was 9.09 million head, 243,000 head less than the same period last year.

Monthly Milk Production 23 States



Milk Cows and Production: By Quarter, United States, 2008-2009¹

Quarter	Milk Cows ²		Milk Per Cow ³		Milk Production ³		
	2008	2009	2008	2009	2008	2009	Change From 2008
	<i>1,000 Head</i>	<i>1,000 Head</i>	<i>Pounds</i>	<i>Pounds</i>	<i>Million Pounds</i>	<i>Million Pounds</i>	<i>Percent</i>
Jan-Mar	9,286	9,295	5,127	5,096	47,610	47,363	-0.5
Apr-Jun	9,315	9,260	5,236	5,278	48,774	48,874	0.2
Jul-Sep	9,330	9,159	5,025	5,108	46,881	46,782	-0.2
Oct-Dec	9,330	9,087	5,008	5,089	46,727	46,240	-1.0
Annual	9,315	9,200	20,396	20,572	189,992	189,259	-0.4

¹ May not add due to rounding.

² Includes dry cows, excludes heifers not yet fresh.

³ Excludes milk sucked by calves.

Milk Cows and Production: By Month, 23 Selected States, 2008-2009¹

Month	Milk Cows ²		Milk Per Cow ³		Milk Production ³		
	2008	2009	2008	2009	2008	2009	Change from 2008
	<i>1,000 Head</i>	<i>1,000 Head</i>	<i>Pounds</i>	<i>Pounds</i>	<i>Million Pounds</i>	<i>Million Pounds</i>	<i>Percent</i>
Jan	8,445	8,504	1,747	1,753	14,750	14,907	1.1
Feb	8,457	8,486	1,656	1,606	14,007	13,627	-2.7
Mar	8,467	8,481	1,794	1,794	15,191	15,211	0.1
Apr	8,482	8,481	1,757	1,759	14,901	14,916	0.1
May	8,496	8,473	1,819	1,833	15,451	15,529	0.5
Jun	8,500	8,434	1,736	1,752	14,760	14,775	0.1
Jul	8,515	8,400	1,744	1,767	14,848	14,845	
Aug	8,515	8,374	1,718	1,746	14,626	14,617	-0.1
Sep	8,510	8,338	1,650	1,675	14,041	13,965	-0.5
Oct	8,512	8,316	1,700	1,720	14,469	14,301	-1.2
Nov	8,519	8,313	1,654	1,682	14,089	13,979	-0.8
Dec	8,519	8,313	1,729	1,758	14,728	14,614	-0.8
Annual	8,495	8,409	20,704	20,845	175,861	175,286	-0.3

¹ 2009 previous month revised.

² Includes dry cows, excludes heifers not yet fresh.

³ Excludes milk sucked by calves.

Estimated Milk Cows and Production: By Month, United States, 2008-2009¹

Month	Milk Cows ²		Milk Per Cow ³		Milk Production ³		
	2008	2009	2008	2009	2008	2009	Change From 2008
	<i>1,000 Head</i>	<i>1,000 Head</i>	<i>Pounds</i>	<i>Pounds</i>	<i>Million Pounds</i>	<i>Million Pounds</i>	<i>Percent</i>
Jan	9,276	9,312	1,722	1,733	15,976	16,138	1.0
Feb	9,287	9,289	1,634	1,589	15,176	14,756	-2.8
Mar	9,295	9,283	1,771	1,774	16,458	16,469	0.1
Apr	9,307	9,282	1,733	1,738	16,125	16,135	0.1
May	9,318	9,270	1,793	1,811	16,707	16,785	0.5
Jun	9,321	9,228	1,710	1,729	15,942	15,954	0.1
Jul	9,335	9,191	1,713	1,740	15,995	15,991	
Aug	9,331	9,162	1,689	1,719	15,757	15,746	-0.1
Sep	9,323	9,123	1,623	1,649	15,129	15,045	-0.6
Oct	9,324	9,094	1,675	1,695	15,615	15,414	-1.3
Nov	9,333	9,085	1,630	1,659	15,212	15,070	-0.9
Dec	9,334	9,082	1,703	1,735	15,900	15,756	-0.9
Annual	9,315	9,200	20,396	20,572	189,992	189,259	-0.4

¹ 2009 revised.

² Includes dry cows, excludes heifers not yet fresh.

³ Excludes milk sucked by calves.

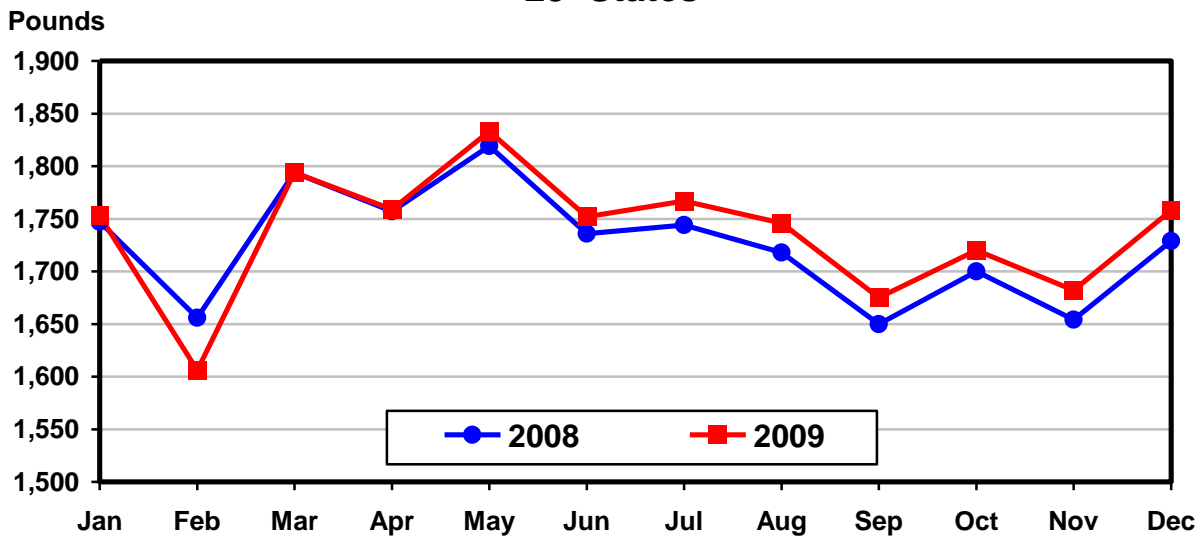
Milk Cows and Production: By State, December 2008-2009

State	Milk Cows ¹		Milk Per Cow ²		Milk Production ²		
	2008	2009	2008	2009	2008	2009	Change From 2008
	<i>1,000 Head</i>	<i>1,000 Head</i>	<i>Pounds</i>	<i>Pounds</i>	<i>Million Pounds</i>	<i>Million Pounds</i>	<i>Percent</i>
AZ	190	168	1,980	1,995	376	335	-10.9
CA	1,840	1,764	1,870	1,860	3,441	3,281	-4.6
CO	130	116	1,940	1,930	252	224	-11.1
FL	118	112	1,520	1,565	179	175	-2.2
ID	554	550	1,820	1,840	1,008	1,012	0.4
IL	102	101	1,580	1,600	161	162	0.6
IN	167	169	1,650	1,660	276	281	1.8
IA	215	215	1,690	1,750	363	376	3.6
KS	124	115	1,740	1,785	216	205	-5.1
MI	354	354	1,850	1,895	655	671	2.4
MN	467	469	1,605	1,650	750	774	3.2
MO	109	103	1,270	1,230	138	127	-8.0
NM	335	318	1,975	2,015	662	641	-3.2
NY	625	610	1,640	1,675	1,025	1,022	-0.3
OH	276	272	1,510	1,550	417	422	1.2
OR	115	114	1,590	1,625	183	185	1.1
PA	548	538	1,580	1,620	866	872	0.7
TX	430	411	1,715	1,795	737	738	0.1
UT	85	83	1,765	1,765	150	146	-2.7
VT	139	134	1,525	1,545	212	207	-2.4
VA	97	95	1,495	1,525	145	145	
WA	244	243	1,900	1,945	464	473	1.9
WI	1,255	1,259	1,635	1,700	2,052	2,140	4.3
23-State Total	8,519	8,313	1,729	1,758	14,728	14,614	-0.8

¹ Includes dry cows, excludes heifers not yet fresh.

² Excludes milk sucked by calves.

**Monthly Milk per Cow
23 States**



Milk Cows and Production: By State, November 2008-2009 ¹

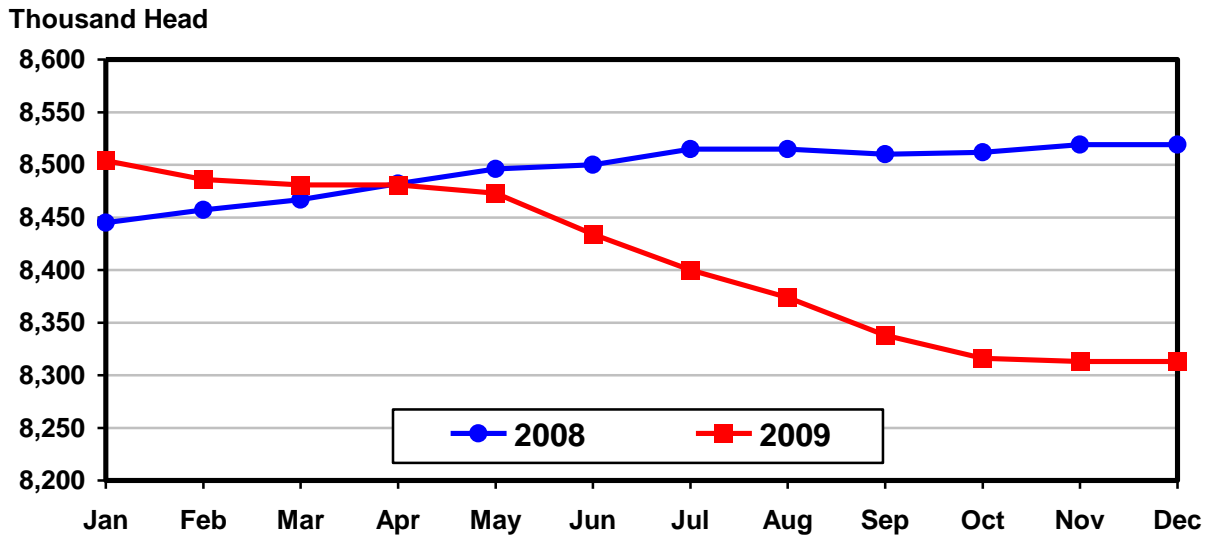
State	Milk Cows ²		Milk per Cow ³		Milk Production ³		
	2008	2009	2008	2009	2008	2009	Change From 2008
	<i>1,000 Head</i>	<i>1,000 Head</i>	<i>Pounds</i>	<i>Pounds</i>	<i>Million Pounds</i>	<i>Million Pounds</i>	<i>Percent</i>
AZ	188	168	1,840	1,840	346	309	-10.7
CA	1,845	1,765	1,795	1,775	3,312	3,133	-5.4
CO	130	116	1,845	1,880	240	218	-9.2
FL	119	113	1,320	1,360	157	154	-1.9
ID	554	548	1,770	1,790	981	981	
IL	102	101	1,470	1,510	150	153	2.0
IN	167	169	1,580	1,620	264	274	3.8
IA	215	215	1,630	1,670	350	359	2.6
KS	121	113	1,695	1,725	205	195	-4.9
MI	353	354	1,780	1,810	628	641	2.1
MN	467	469	1,525	1,545	712	725	1.8
MO	110	105	1,175	1,170	129	123	-4.7
NM	334	317	1,900	1,970	635	624	-1.7
NY	624	611	1,580	1,595	986	975	-1.1
OH	277	274	1,460	1,510	404	414	2.5
OR	115	114	1,555	1,560	179	178	-0.6
PA	548	537	1,510	1,560	827	838	1.3
TX	430	413	1,600	1,710	688	706	2.6
UT	85	83	1,685	1,740	143	144	0.7
VT	139	134	1,455	1,470	202	197	-2.5
VA	97	95	1,410	1,455	137	138	0.7
WA	245	241	1,840	1,865	451	449	-0.4
WI	1,254	1,258	1,565	1,630	1,963	2,051	4.5
23-State Total	8,519	8,313	1,654	1,682	14,089	13,979	-0.8

¹ 2009 revised.

² Includes dry cows, excludes heifers not yet fresh.

³ Excludes milk sucked by calves.

**Monthly Milk Cows
23 States**



**Milk Cows and Production: By State and United States,
Revised July-September, 2008-2009**

State	Jul-Sep Milk Cows ¹		Jul-Sep Milk Production ²		Change From 2008
	2008	2009	2008	2009	
	<i>1,000 Head</i>	<i>1,000 Head</i>	<i>Million Pounds</i>	<i>Million Pounds</i>	<i>Percent</i>
AL	12.0	11.0	38	35	-7.9
AK	0.6	0.6	1.7	1.5	-11.8
AZ	185	170	977	896	-8.3
AR	14.5	13.0	44	38	-13.6
CA	1,846	1,781	10,089	9,563	-5.2
CO	130	122	744	716	-3.8
CT	19.0	18.0	88	86	-2.3
DE	6.5	5.5	25.0	23.0	-8.0
FL	120	114	453	453	
GA	75	77	305	319	4.6
HI	1.6	1.5	4.4	5.2	18.2
ID	555	548	3,219	3,135	-2.6
IL	102	102	448	468	4.5
IN	166	168	797	836	4.9
IA	215	215	1,064	1,090	2.4
KS	117	116	597	598	0.2
KY	88	83	272	280	2.9
LA	26	22	66	56	-15.2
ME	33	33	154	152	-1.3
MD	56	55	242	238	-1.7
MA	14.5	13.0	63	57	-9.5
MI	352	357	1,954	2,038	4.3
MN	465	469	2,163	2,268	4.9
MS	20.0	17.5	62	51	-17.7
MO	111	106	376	371	-1.3
MT	17.0	15.0	80	75	-6.3
NE	59	61	272	306	12.5
NV	27	27	140	147	5.0
NH	15.0	15.0	74	73	-1.4
NJ	10.0	9.0	39	38	-2.6
NM	338	320	1,956	1,928	-1.4
NY	626	619	3,111	3,117	0.2
NC	46	45	207	207	
ND	26	22	104	95	-8.7
OH	280	278	1,267	1,307	3.2
OK	63	58	261	238	-8.8
OR	115	114	564	563	-0.2
PA	547	544	2,599	2,617	0.7
RI	1.1	1.1	5.0	4.8	-4.0
SC	18.0	17.5	70	73	4.3
SD	91	95	458	481	5.0
TN	58	55	212	210	-0.9
TX	424	420	2,050	2,116	3.2
UT	85	83	458	451	-1.5
VT	140	135	641	616	-3.9
VA	97	96	407	419	2.9
WA	245	238	1,444	1,411	-2.3
WV	12.0	11.0	45	41	-8.9
WI	1,252	1,257	6,137	6,450	5.1
WY	7.0	5.0	34.1	24.2	-29.0
US ³	9,330	9,159	46,881	46,782	-0.2

¹ Includes dry cows, excludes heifers not yet fresh.

² Excludes milk sucked by calves.

³ May not add due to rounding.

**Milk Cows and Production: By State and United States,
Preliminary October-December, 2008-2009**

State	Oct-Dec Milk Cows ¹		Oct-Dec Milk Production ²		Change From 2008
	2008	2009	2008	2009	
	<i>1,000 Head</i>	<i>1,000 Head</i>	<i>Million Pounds</i>	<i>Million Pounds</i>	<i>Percent</i>
AL	12.0	11.0	42	36	-14.3
AK	0.6	0.6	1.6	1.5	-6.3
AZ	188	167	1,063	949	-10.7
AR	14.0	13.0	43	37	-14.0
CA	1,843	1,765	10,139	9,621	-5.1
CO	130	116	738	666	-9.8
CT	19.0	18.0	88	86	-2.3
DE	6.5	6.0	26.0	24.0	-7.7
FL	119	113	482	468	-2.9
GA	75	76	325	321	-1.2
HI	1.6	1.6	4.8	5.3	10.4
ID	554	548	3,025	3,014	-0.4
IL	102	101	463	472	1.9
IN	167	169	810	837	3.3
IA	215	215	1,076	1,098	2.0
KS	121	113	624	596	-4.5
KY	87	81	291	279	-4.1
LA	25	21	68	58	-14.7
ME	33	33	148	146	-1.4
MD	56	54	249	244	-2.0
MA	14.5	13.0	61	56	-8.2
MI	353	354	1,934	1,972	2.0
MN	467	469	2,187	2,240	2.4
MS	19.0	17.0	63	55	-12.7
MO	110	104	397	373	-6.0
MT	16.0	15.0	77	73	-5.2
NE	59	60	278	305	9.7
NV	27	28	147	152	3.4
NH	15.0	15.0	72	71	-1.4
NJ	10.0	8.5	38	35	-7.9
NM	334	317	1,938	1,905	-1.7
NY	625	612	3,024	2,998	-0.9
NC	46	44	213	208	-2.3
ND	25	21	100	92	-8.0
OH	277	274	1,241	1,261	1.6
OK	63	57	261	239	-8.4
OR	115	114	548	547	-0.2
PA	548	538	2,555	2,572	0.7
RI	1.1	1.1	4.9	4.7	-4.1
SC	17.0	17.5	71	74	4.2
SD	93	93	466	468	0.4
TN	59	54	225	208	-7.6
TX	429	412	2,121	2,154	1.6
UT	85	83	443	438	-1.1
VT	139	134	621	604	-2.7
VA	97	95	421	423	0.5
WA	245	241	1,385	1,388	0.2
WV	12.0	10.0	44	38	-13.6
WI	1,254	1,258	6,051	6,298	4.1
WY	7.0	6.0	33.5	29.3	-12.5
US ³	9,330	9,087	46,727	46,240	-1.0

¹ Includes dry cows, excludes heifers not yet fresh.

² Excludes milk sucked by calves.

³ May not add due to rounding.

Reliability Statement

Survey Procedures: Primary data used to determine these estimates were obtained from a sample of producers. Individual States maintain a list of all known milk producers and information on the size of their herd. States use all known sources of producers to ensure that their lists are as complete as possible. Generally, all large producers and a sample of small producers are included in the survey. Questionnaires are mailed to producers near the end of the month to obtain data for the first day of the month. Additional reports are obtained by telephone, as needed, to supplement the mail response. Where feasible, States utilize state and federal administrative data, rather than conduct a monthly or quarterly survey, to estimate milk production. This eliminates duplication of data gathering by different government agencies. Indications of milk cow inventory are also obtained in the January and July Cattle Surveys.

Estimation Procedures: State offices prepare these estimates by using a combination of survey indications, historic trends, and any available administrative data. Individual State estimates are reviewed by the Agricultural Statistics Board for reasonableness.

Revision Policy: Milk production, rate per cow, and number of cows are subject to revision the following month for monthly States or the following quarter for the quarterly States. Normally, Federal Market Order sales are the main basis for revisions. However, data for all orders are not available in time for this revision. Estimates are again subject to revisions in February each year based on additional administrative data. In the event that additional changes are necessary, a third revision is possible in February the following year. Estimates are again reviewed after data from the five-year Census of Agriculture are available. No revisions are made after that date.

Reliability: Since all operations with dairy animals are not included in the sample, survey estimates are subject to sampling variability. Survey results are also subject to non-sampling errors such as omissions, duplications, and mistakes in reporting, recording, and processing the data. The effects of these errors cannot be measured directly. They are minimized through rigid quality controls in the data collection process and through a careful review of all reported data for consistency and reasonableness.

To assist users in evaluating the reliability of the estimates in this report, the "Root Mean Square Error" is shown for selected items on the next page. The "Root Mean Square Error" is a statistical measure based on past performance and is computed using the differences between first and final estimates. The "Root Mean Square Error" for milk cow inventory estimates over the past 20 quarters is 0.3 percent. This means that chances are 2 out of 3 that the final estimate will not be above or below the current estimate of 9.09 million head by more than 0.3 percent. Chances are 9 out of 10 that the difference will not exceed 0.6 percent.

Reliability of Quarterly Milk Production Estimates ¹

Item	Root Mean Square Error	90% Confidence Level		Difference Between First and Latest Estimates			Quarters	
				Average	Smallest	Largest	First Above Latest	First Below Latest
				<i>Million Pounds</i>	<i>Million Pounds</i>	<i>Million Pounds</i>	<i>Number</i>	<i>Number</i>
Milk Production	<i>Percent</i> 0.2	<i>Percent</i> 0.3	<i>Million Pounds</i> 130	<i>Million Pounds</i> 59	<i>Million Pounds</i> 3	<i>Million Pounds</i> 192	<i>Number</i> 4	<i>Number</i> 16
All Milk Cows	<i>Percent</i> 0.3	<i>Percent</i> 0.6	<i>1,000 Head</i> 50	<i>1,000 Head</i> 24	<i>1,000 Head</i> 0	<i>1,000 Head</i> 53	<i>Number</i> 2	<i>Number</i> 17

¹ Based on the U.S. total for the past 20 quarters.

Information Contacts

Listed below are the commodity specialists in the Livestock Branch of the National Agricultural Statistics Service to contact for additional information.

Dan Kerestes, Chief, Livestock Branch (202) 720-3570

Livestock Section

Scott Hollis, Head, Livestock Section (202) 690-2424
 Jim Collom - Dairy Products (202) 690-3236
 Joe Gaynor - Dairy Products Prices (202) 690-2168
 Jason Hardegee - Cattle, Cattle on Feed (202) 720-3040
 Sherry Bertramsen - Livestock Slaughter (515) 284-4340
 Everett Olbert - Sheep and Goats (202) 720-4751
 Mike Miller - Milk Production and Milk Cows (202) 720-3278
 Nick Streff - Hogs and Pigs (202) 720-3106

ACCESS TO REPORTS!!

For your convenience, there are several ways to obtain NASS reports, data products, and services:

INTERNET ACCESS

All NASS reports are available free of charge. For free access, connect to the Internet and go to the NASS Home Page at: www.nass.usda.gov.

E-MAIL SUBSCRIPTION

All NASS reports are available by subscription free of charge direct to your e-mail address. Starting with the NASS Home Page at www.nass.usda.gov, under the right navigation, *Receive reports by Email*, click on **National** or **State**. Follow the instructions on the screen.

PRINTED REPORTS OR DATA PRODUCTS

CALL OUR TOLL-FREE ORDER DESK: 800-999-6779 (U.S. and Canada)
Other areas, please call 703-605-6220 FAX: 703-605-6880
(Visa, MasterCard, check, or money order acceptable for payment.)

ASSISTANCE

For **assistance** with general agricultural statistics or further information about NASS or its products or services, contact the **Agricultural Statistics Hotline** at **800-727-9540**, 7:30 a.m. to 4:00 p.m. ET, or e-mail: nass@nass.usda.gov.

The U.S. Department of Agriculture (USDA) prohibits discrimination in all its programs and activities on the basis of race, color, national origin, age, disability, and where applicable, sex, marital status, familial status, parental status, religion, sexual orientation, genetic information, political beliefs, reprisal, or because all or a part of an individual's income is derived from any public assistance program. (Not all prohibited bases apply to all programs.) Persons with disabilities who require alternative means for communication of program information (Braille, large print, audiotape, etc.) should contact USDA's TARGET Center at (202) 720-2600 (voice and TDD).

To file a complaint of discrimination, write to USDA, Director, Office of Civil Rights, 1400 Independence Avenue, S.W., Washington, D.C. 20250-9410, or call (800) 795-3272 (voice) or (202) 720-6382 (TDD). USDA is an equal opportunity provider and employer.



Sustainable Agriculture

The Key to Health and Prosperity

February 18 – 19, 2010

Crystal Gateway Marriott Hotel
1700 Jefferson Davis Highway
Arlington, Virginia

www.usda.gov/oce/forum

Early Bird Registration \$350 until January 15, 2010 * \$375 after January 15

Topical Sessions Cover:

- *Rural Communities
- *Nutrition
- *Risk Management
- *Conservation
- *Organics & Sustainability
- *Climate Change
- *Food Security & Safety
- *World Commerce
- * Energy

and the traditional Food Price, Farm Income, and Commodity Outlook Sessions