

Milk Production

Released February 19, 2010, by the National Agricultural Statistics Service (NASS), Agricultural Statistics Board, U.S. Department of Agriculture. For information on *Milk Production* call Mike Miller at 202-720-3278, office hours 7:30 a.m. to 4:00 p.m. ET.

January Milk Production down 0.6 Percent

Milk production in the 23 major States during January totaled 14.8 billion pounds, down 0.6 percent from January 2009. December revised production at 14.6 billion pounds, was down 0.7 percent from December 2008. The December revision represented an increase of 18 million pounds or 0.1 percent from last month's preliminary production estimate.

Production per cow in the 23 major States averaged 1,782 pounds for January, 30 pounds above January 2009.

The number of milk cows on farms in the 23 major States was 8.32 million head, 191,000 head less than January 2009, but 4,000 head more than December 2009.

2009 Annual Milk Production down 0.3 Percent from 2008

The annual production of milk for the U.S. during 2009 was 189 billion pounds, 0.3 percent below 2008. Revisions to 2008 production decreased the annual total 10 million pounds. Revised 2009 production was up 61 million pounds from last month's publication.

Production per cow in the U.S. averaged 20,576 pounds for 2009, 181 pounds above 2008. The average annual rate of milk production per cow has increased 13.1 percent from 2000.

The average number of milk cows on farms in the U.S. during 2009 was 9.20 million head, down 1.2 percent from 2008. There was no revision to the average number of milk cows for 2008.

Milk Cows and Production: By Quarter, United States, 2009-2010 ¹

Quarter	Milk Cows ²		Milk Per Cow ³		Milk Production ³		
	2009	2010	2009	2010	2009	2010	Change From 2009
	<i>1,000 Head</i>	<i>1,000 Head</i>	<i>Pounds</i>	<i>Pounds</i>	<i>Million Pounds</i>	<i>Million Pounds</i>	<i>Percent</i>
Jan-Mar	9,295		5,097		47,374		
Apr-Jun	9,262		5,278		48,888		
Jul-Sep	9,155		5,111		46,793		
Oct-Dec	9,090		5,090		46,265		
Annual	9,201		20,576		189,320		

¹ May not add due to rounding.

² Includes dry cows, excludes heifers not yet fresh.

³ Excludes milk sucked by calves.

Milk Cows and Production: By Month, 23 Selected States, 2009-2010 ¹

Month	Milk Cows ²		Milk Per Cow ³		Milk Production ³		
	2009	2010	2009	2010	2009	2010	Change from 2009
	<i>1,000 Head</i>	<i>1,000 Head</i>	<i>Pounds</i>	<i>Pounds</i>	<i>Million Pounds</i>	<i>Million Pounds</i>	<i>Percent</i>
Jan	8,506	8,315	1,752	1,782	14,902	14,817	-0.6
Feb	8,486		1,605		13,624		
Mar	8,482		1,795		15,222		
Apr	8,480		1,760		14,922		
May	8,475		1,834		15,541		
Jun	8,434		1,749		14,754		
Jul	8,397		1,771		14,867		
Aug	8,372		1,745		14,606		
Sep	8,335		1,675		13,957		
Oct	8,316		1,720		14,306		
Nov	8,314		1,681		13,979		
Dec	8,311		1,761		14,632		
Annual	8,409		20,848		175,312		

¹ 2009 revised.

² Includes dry cows, excludes heifers not yet fresh.

³ Excludes milk sucked by calves.

Estimated Milk Cows and Production: By Month, United States, 2009-2010 ¹

Month	Milk Cows ²		Milk Per Cow ³		Milk Production ³		
	2009	2010	2009	2010	2009	2010	Change From 2009
	<i>1,000 Head</i>	<i>1,000 Head</i>	<i>Pounds</i>	<i>Pounds</i>	<i>Million Pounds</i>	<i>Million Pounds</i>	<i>Percent</i>
Jan	9,312	9,085	1,733	1,766	16,135	16,040	-0.6
Feb	9,289		1,588		14,754		
Mar	9,283		1,776		16,485		
Apr	9,282		1,740		16,148		
May	9,274		1,812		16,805		
Jun	9,230		1,726		15,935		
Jul	9,187		1,744		16,018		
Aug	9,159		1,718		15,737		
Sep	9,120		1,649		15,038		
Oct	9,096		1,695		15,420		
Nov	9,091		1,658		15,070		
Dec	9,082		1,737		15,775		
Annual	9,201		20,576		189,320		

¹ 2009 revised.

² Includes dry cows, excludes heifers not yet fresh.

³ Excludes milk sucked by calves.

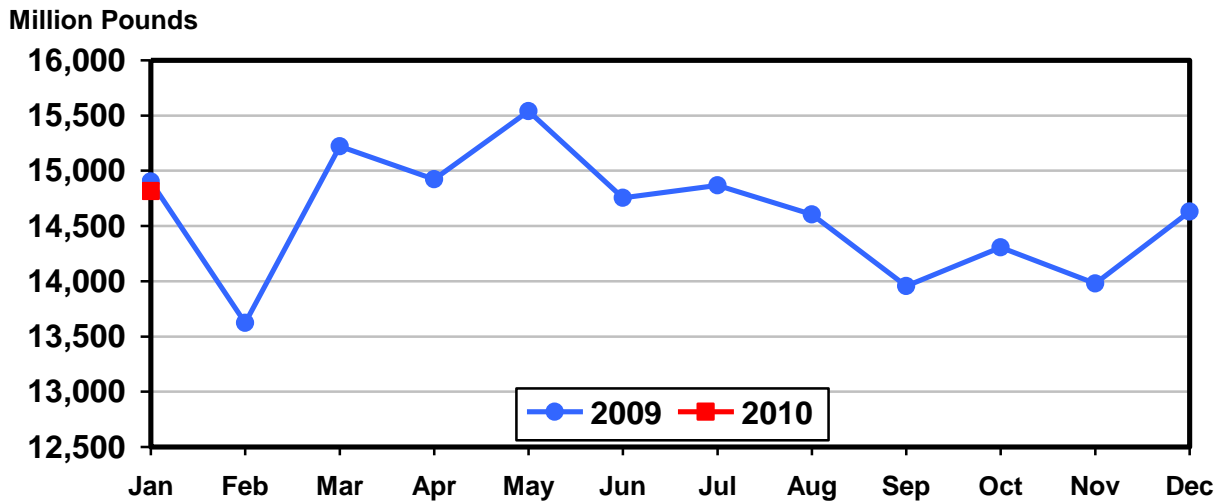
Milk Cows and Production: By State, January 2009-2010

State	Milk Cows ¹		Milk Per Cow ²		Milk Production ²		
	2009	2010	2009	2010	2009	2010	Change From 2009
	<i>1,000 Head</i>	<i>1,000 Head</i>	<i>Pounds</i>	<i>Pounds</i>	<i>Million Pounds</i>	<i>Million Pounds</i>	<i>Percent</i>
AZ	189	169	1,985	2,055	375	347	-7.5
CA	1,832	1,760	1,885	1,915	3,453	3,370	-2.4
CO	129	116	1,940	1,930	250	224	-10.4
FL	118	112	1,660	1,600	196	179	-8.7
ID	554	550	1,810	1,850	1,003	1,018	1.5
IL	102	101	1,610	1,615	164	163	-0.6
IN	167	169	1,695	1,675	283	283	
IA	215	215	1,700	1,735	366	373	1.9
KS	125	116	1,800	1,785	225	207	-8.0
MI	354	353	1,865	1,915	660	676	2.4
MN	468	470	1,620	1,670	758	785	3.6
MO	108	102	1,270	1,220	137	124	-9.5
NM	334	318	2,015	2,015	673	641	-4.8
NY	624	610	1,670	1,685	1,042	1,028	-1.3
OH	277	272	1,550	1,600	429	435	1.4
OR	115	114	1,650	1,685	190	192	1.1
PA	550	541	1,630	1,630	897	882	-1.7
TX	430	410	1,780	1,805	765	740	-3.3
UT	85	82	1,720	1,795	146	147	0.7
VT	137	134	1,545	1,560	212	209	-1.4
VA	97	95	1,545	1,535	150	146	-2.7
WA	241	246	1,925	1,980	464	487	5.0
WI	1,255	1,260	1,645	1,715	2,064	2,161	4.7
23-State Total	8,506	8,315	1,752	1,782	14,902	14,817	-0.6

¹ Includes dry cows, excludes heifers not yet fresh.

² Excludes milk sucked by calves.

Monthly Milk Production 23 States



Milk Cows and Production: By State, December 2008-2009 ¹

State	Milk Cows ²		Milk per Cow ³		Milk Production ³		
	2008	2009	2008	2009	2008	2009	Change From 2008
	<i>1,000 Head</i>	<i>1,000 Head</i>	<i>Pounds</i>	<i>Pounds</i>	<i>Million Pounds</i>	<i>Million Pounds</i>	<i>Percent</i>
AZ	190	167	1,980	2,005	376	335	-10.9
CA	1,840	1,762	1,870	1,865	3,441	3,286	-4.5
CO	130	116	1,940	1,900	252	220	-12.7
FL	118	112	1,520	1,535	179	172	-3.9
ID	554	550	1,820	1,850	1,008	1,018	1.0
IL	102	101	1,580	1,600	161	162	0.6
IN	167	169	1,675	1,675	280	283	1.1
IA	215	215	1,690	1,750	363	376	3.6
KS	124	115	1,740	1,785	216	205	-5.1
MI	354	354	1,850	1,910	655	676	3.2
MN	467	470	1,605	1,630	750	766	2.1
MO	109	103	1,270	1,230	138	127	-8.0
NM	335	318	1,975	2,015	662	641	-3.2
NY	625	610	1,640	1,675	1,025	1,022	-0.3
OH	276	272	1,510	1,580	417	430	3.1
OR	115	114	1,590	1,625	183	185	1.1
PA	548	539	1,580	1,620	866	873	0.8
TX	430	411	1,715	1,795	737	738	0.1
UT	85	82	1,765	1,795	150	147	-2.0
VT	139	134	1,525	1,545	212	207	-2.4
VA	97	95	1,495	1,525	145	145	0.0
WA	244	243	1,900	1,940	464	471	1.5
WI	1,255	1,259	1,635	1,705	2,052	2,147	4.6
23-State Total	8,519	8,311	1,729	1,761	14,732	14,632	-0.7

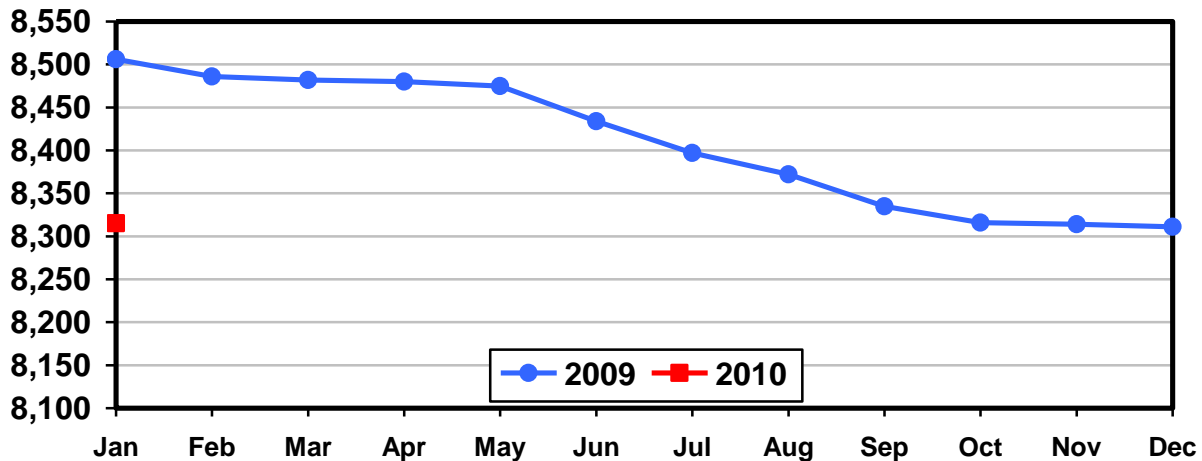
¹ 2009 revised.

² Includes dry cows, excludes heifers not yet fresh.

³ Excludes milk sucked by calves.

Monthly Milk Cows 23 States

Thousand Head



Milk Cows and Production: United States, 2000-2009 ¹

Year	Milk Cows ² <i>1,000 Head</i>	Production per Cow ³		Milk Production ³
		Milk <i>Pounds</i>	Total <i>Million Pounds</i>	
2000	9,199	18,197	167,393	
2001	9,103	18,162	165,332	
2002	9,139	18,608	170,063	
2003	9,081	18,759	170,348	
2004	9,010	18,960	170,832	
2005	9,050	19,550	176,931	
2006	9,137	19,895	181,782	
2007	9,189	20,204	185,654	
2008	9,315	20,395	189,982	
2009	9,201	20,576	189,320	

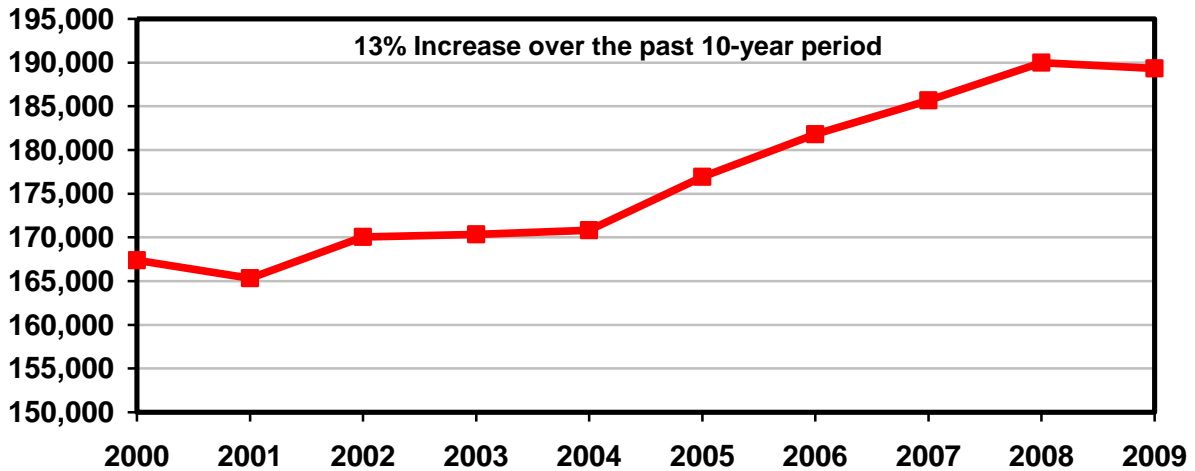
¹ May not add due to rounding.

² Average number during year, excluding heifers not yet fresh.

³ Excludes milk sucked by calves.

Milk Production 2000-2009 United States

Million Pounds



Milk Cows and Production: By State and United States, 2008-2009

State	Milk Cows ¹		Milk Per Cow ²		Milk Production ²		Change From 2008
	2008	2009	2008	2009	2008	2009	
	<i>1,000 Head</i>	<i>1,000 Head</i>	<i>Pounds</i>	<i>Pounds</i>	<i>Million Pounds</i>	<i>Million Pounds</i>	<i>Percent</i>
AL	12	11	15,333	14,909	184	164	-10.9
AK	0.6	0.6	12,000	10,000	7.2	6.0	-16.7
AZ	186	177	23,382	23,028	4,349	4,076	-6.3
AR	15	13	12,400	12,615	186	164	-11.8
CA	1,844	1,796	22,344	22,000	41,203	39,512	-4.1
CO	128	123	22,930	23,089	2,935	2,840	-3.2
CT	19	19	19,158	18,684	364	355	-2.5
DE	6.5	6.0	16,923	17,000	110.0	102.0	-7.3
FL	120	115	17,167	18,061	2,060	2,077	0.8
GA	76	75	17,829	18,600	1,355	1,395	3.0
HI	1.7	1.5	10,882	14,200	18.5	21.3	15.1
ID	549	550	22,432	22,091	12,315	12,150	-1.3
IL	102	102	18,569	18,873	1,894	1,925	1.6
IN	167	168	19,683	20,137	3,287	3,383	2.9
IA	216	215	19,995	20,367	4,319	4,379	1.4
KS	117	118	20,641	21,085	2,415	2,488	3.0
KY	90	84	13,444	14,190	1,210	1,192	-1.5
LA	26	23	12,269	11,870	319	273	-14.4
ME	33	33	18,273	18,061	603	596	-1.2
MD	56	55	18,375	18,255	1,029	1,004	-2.4
MA	15	14	16,933	17,571	254	246	-3.1
MI	350	355	22,180	22,445	7,763	7,968	2.6
MN	464	469	18,927	19,230	8,782	9,019	2.7
MS	20	18	14,550	13,889	291	250	-14.1
MO	110	107	14,682	14,654	1,615	1,568	-2.9
MT	17	15	18,412	19,933	313	299	-4.5
NE	58	61	18,672	19,721	1,083	1,203	11.1
NV	27	28	20,704	21,821	559	611	9.3
NH	15	15	19,933	19,533	299	293	-2.0
NJ	10	9	16,900	17,889	169	161	-4.7
NM	338	325	23,269	24,320	7,865	7,904	0.5
NY	626	619	19,859	20,071	12,432	12,424	-0.1
NC	47	45	18,979	19,644	892	884	-0.9
ND	26	23	16,077	16,739	418	385	-7.9
OH	280	277	18,321	18,744	5,130	5,192	1.2
OK	64	59	16,578	16,983	1,061	1,002	-5.6
OR	114	114	19,772	19,719	2,254	2,248	-0.3
PA	549	545	19,262	19,360	10,575	10,551	-0.2
RI	1.1	1.1	18,091	17,818	19.9	19.6	-1.5
SC	18	17	17,889	18,765	322	319	-0.9
SD	90	94	19,956	20,128	1,796	1,892	5.3
TN	59	56	16,068	16,232	948	909	-4.1
TX	418	423	20,134	20,898	8,416	8,840	5.0
UT	85	84	20,894	20,988	1,776	1,763	-0.7
VT	140	135	18,400	18,289	2,576	2,469	-4.2
VA	98	96	17,612	18,083	1,726	1,736	0.6
WA	244	240	23,344	23,171	5,696	5,561	-2.4
WV	12	11	15,083	14,727	181	162	-10.5
WI	1,252	1,257	19,546	20,079	24,472	25,239	3.1
WY	7.0	5.3	19,386	18,811	135.7	99.7	-26.5
US ³	9,315	9,201	20,395	20,576	189,982	189,320	-0.3

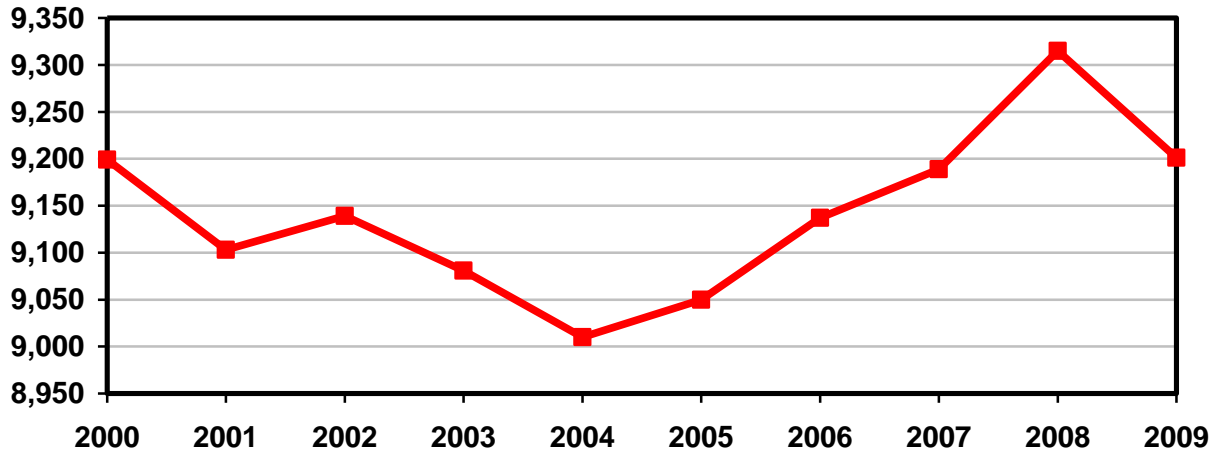
¹ Average number during year, excluding heifers not yet fresh.

² Excludes milk sucked by calves.

³ May not add due to rounding.

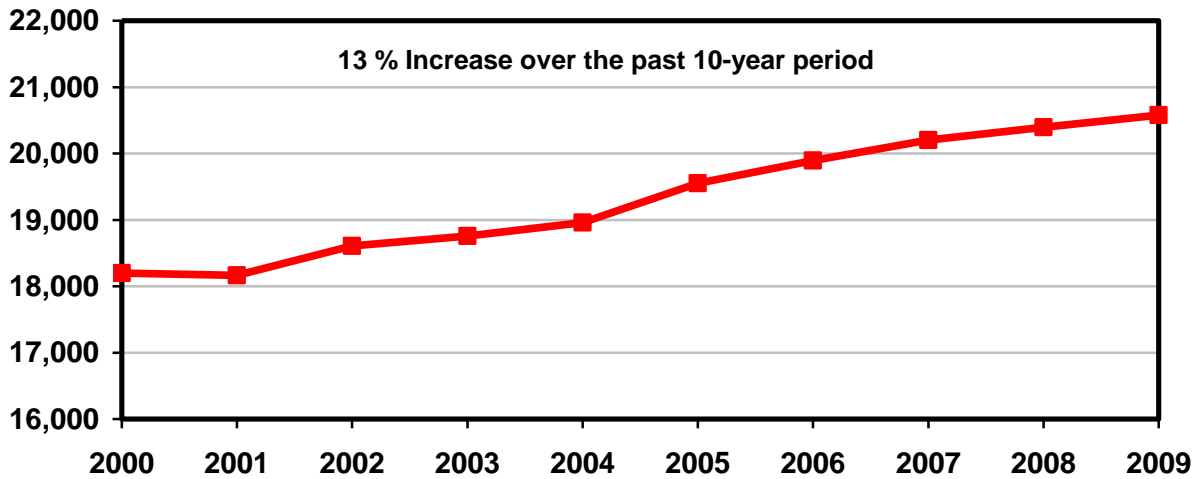
Milk Cows 2000-2009 United States

Thousand Head



Rate per Cow 2000-2009 United States

Pounds



Milk Cows: Number by Month, State, 23 State, and United States, 2008 ¹

State	Jan	Feb	Mar	Apr	May	Jun	
	<i>1,000 Head</i>	<i>1,000 Head</i>	<i>1,000 Head</i>	<i>1,000 Head</i>	<i>1,000 Head</i>	<i>1,000 Head</i>	
AZ	185	185	186	186	186	186	
CA	1,838	1,840	1,842	1,845	1,847	1,847	
CO	126	126	126	127	127	128	
FL	120	120	120	120	120	120	
ID	534	537	540	543	550	551	
IL	103	102	102	102	102	102	
IN	167	167	166	168	168	166	
IA	216	216	216	216	216	216	
KS	115	115	115	115	115	116	
MI	344	344	345	347	350	351	
MN	463	463	463	463	463	463	
MO	110	110	110	111	111	110	
NM	336	340	340	342	342	340	
NY	626	626	626	626	626	626	
OH	278	280	280	281	282	282	
OR	114	114	114	113	113	114	
PA	552	551	549	549	548	546	
TX	402	404	408	410	412	417	
UT	85	85	85	85	85	85	
VT	140	140	140	140	140	140	
VA	98	98	98	98	98	98	
WA	243	244	245	244	244	244	
WI	1,250	1,250	1,251	1,251	1,251	1,252	
23-Sts	8,445	8,457	8,467	8,482	8,496	8,500	
US ³	9,274	9,287	9,295	9,307	9,318	9,321	
	Jul	Aug	Sep	Oct	Nov	Dec	Annual Avg. ²
AZ	185	185	185	186	188	190	186
CA	1,847	1,846	1,845	1,845	1,845	1,840	1,844
CO	129	130	130	130	130	130	128
FL	120	120	120	119	119	118	120
ID	556	555	554	554	554	554	549
IL	102	102	102	102	102	102	102
IN	166	166	166	166	167	167	167
IA	215	215	215	215	215	215	216
KS	117	117	117	118	121	124	117
MI	352	352	352	353	353	354	350
MN	465	465	465	466	467	467	464
MO	111	112	111	110	110	109	110
NM	340	337	336	334	334	335	338
NY	626	626	626	625	624	625	626
OH	281	280	279	278	277	276	280
OR	115	115	115	115	115	115	114
PA	546	548	548	549	548	548	549
TX	423	425	425	428	430	430	418
UT	85	85	85	85	85	85	85
VT	140	140	139	139	139	139	140
VA	97	97	97	97	97	97	98
WA	245	245	245	245	245	244	244
WI	1,252	1,252	1,253	1,253	1,254	1,255	1,252
23-Sts	8,515	8,515	8,510	8,512	8,519	8,519	8,495
US ³	9,334	9,331	9,322	9,325	9,333	9,334	9,315

¹ Includes dry cows, excludes heifers not yet fresh.

² Average based on monthly totals.

³ U.S. monthly estimates are derived by proportionally allocating the quarterly estimates using the 23-state monthly total.

Milk Cows: Number by Month, State, 23 State, and United States, 2009 ¹

State	Jan	Feb	Mar	Apr	May	Jun	
	<i>1,000 Head</i>	<i>1,000 Head</i>	<i>1,000 Head</i>	<i>1,000 Head</i>	<i>1,000 Head</i>	<i>1,000 Head</i>	
AZ	189	189	189	188	184	176	
CA	1,832	1,825	1,821	1,821	1,815	1,804	
CO	129	128	128	128	128	126	
FL	118	117	117	117	117	116	
ID	554	549	550	551	553	549	
IL	102	102	102	102	102	102	
IN	167	167	167	167	168	168	
IA	215	215	215	215	215	215	
KS	125	124	122	120	121	118	
MI	354	354	355	356	357	357	
MN	468	468	468	468	469	469	
MO	108	107	108	110	110	109	
NM	334	333	333	332	332	327	
NY	624	623	623	623	623	623	
OH	277	277	277	277	278	278	
OR	115	114	114	114	114	114	
PA	550	551	550	549	547	545	
TX	430	430	430	430	430	428	
UT	85	85	85	85	84	83	
VT	137	136	136	136	136	135	
VA	97	97	97	96	96	96	
WA	241	240	239	239	240	239	
WI	1,255	1,255	1,256	1,256	1,256	1,257	
23-Sts	8,506	8,486	8,482	8,480	8,475	8,434	
US ³	9,312	9,289	9,283	9,282	9,274	9,230	
	Jul	Aug	Sep	Oct	Nov	Dec	Annual Avg. ²
AZ	171	171	167	166	168	167	177
CA	1,790	1,782	1,769	1,767	1,765	1,762	1,796
CO	124	123	117	116	116	116	123
FL	115	114	114	113	113	112	115
ID	550	548	546	546	548	550	550
IL	102	102	102	101	101	101	102
IN	168	167	168	168	169	169	168
IA	215	215	215	215	215	215	215
KS	117	117	114	112	113	115	118
MI	356	355	355	355	354	354	355
MN	469	469	469	469	469	470	469
MO	108	106	105	105	105	103	107
NM	321	320	318	317	317	318	325
NY	621	618	617	614	611	610	619
OH	278	278	278	276	274	272	277
OR	114	114	114	114	114	114	114
PA	545	545	542	539	538	539	545
TX	423	420	416	413	413	411	423
UT	83	83	83	83	83	82	84
VT	135	135	134	134	134	134	135
VA	96	96	96	95	95	95	96
WA	239	237	238	240	241	243	240
WI	1,257	1,257	1,258	1,258	1,258	1,259	1,257
23-Sts	8,397	8,372	8,335	8,316	8,314	8,311	8,409
US ³	9,187	9,159	9,120	9,096	9,091	9,082	9,201

¹ Includes dry cows, excludes heifers not yet fresh.

² Average based on monthly totals.

³ U.S. monthly estimates are derived by proportionally allocating the quarterly estimates using the 23-state monthly total.

**Milk Produced per Cow: by Month,
State, 23 States, and United States, 2008 ¹**

State	Jan	Feb	Mar	Apr	May	Jun	
	<i>Pounds</i>	<i>Pounds</i>	<i>Pounds</i>	<i>Pounds</i>	<i>Pounds</i>	<i>Pounds</i>	
AZ	2,020	1,960	2,190	2,145	2,165	1,950	
CA	1,900	1,810	1,975	1,905	1,940	1,850	
CO	1,880	1,800	1,945	1,910	1,990	1,940	
FL	1,550	1,530	1,655	1,568	1,625	1,440	
ID	1,870	1,750	1,885	1,850	1,930	1,900	
IL	1,615	1,515	1,640	1,615	1,665	1,565	
IN	1,710	1,605	1,705	1,640	1,730	1,650	
IA	1,680	1,600	1,730	1,670	1,740	1,660	
KS	1,720	1,645	1,790	1,740	1,790	1,680	
MI	1,910	1,760	1,870	1,840	1,935	1,860	
MN	1,610	1,520	1,630	1,580	1,645	1,585	
MO	1,225	1,170	1,300	1,325	1,365	1,240	
NM	1,900	1,785	1,990	1,990	2,040	1,970	
NY	1,660	1,590	1,690	1,670	1,770	1,680	
OH	1,540	1,445	1,560	1,580	1,660	1,560	
OR	1,685	1,580	1,700	1,680	1,745	1,660	
PA	1,630	1,540	1,680	1,670	1,720	1,630	
TX	1,685	1,635	1,800	1,770	1,800	1,690	
UT	1,690	1,590	1,720	1,715	1,800	1,780	
VT	1,580	1,490	1,590	1,560	1,600	1,565	
VA	1,540	1,470	1,590	1,570	1,580	1,410	
WA	1,965	1,850	1,990	1,950	2,025	1,970	
WI	1,635	1,545	1,660	1,620	1,710	1,650	
23-Sts	1,746	1,656	1,794	1,756	1,819	1,736	
US ²	1,723	1,634	1,771	1,732	1,793	1,710	
	Jul	Aug	Sep	Oct	Nov	Dec	Annual Avg.
AZ	1,815	1,755	1,710	1,835	1,840	1,980	23,382
CA	1,850	1,840	1,775	1,835	1,795	1,870	22,344
CO	1,950	1,930	1,850	1,890	1,845	1,940	22,930
FL	1,375	1,240	1,160	1,225	1,320	1,520	17,167
ID	1,960	1,970	1,870	1,870	1,770	1,820	22,432
IL	1,520	1,455	1,425	1,490	1,470	1,580	18,569
IN	1,650	1,585	1,550	1,625	1,585	1,675	19,683
IA	1,660	1,660	1,630	1,690	1,630	1,690	19,995
KS	1,725	1,710	1,665	1,720	1,695	1,740	20,641
MI	1,900	1,860	1,790	1,845	1,780	1,850	22,180
MN	1,595	1,565	1,490	1,555	1,525	1,605	18,927
MO	1,170	1,110	1,100	1,180	1,175	1,270	14,682
NM	1,990	1,920	1,880	1,920	1,900	1,975	23,269
NY	1,690	1,690	1,590	1,620	1,580	1,640	19,859
OH	1,550	1,520	1,450	1,510	1,460	1,510	18,321
OR	1,670	1,645	1,590	1,615	1,555	1,590	19,772
PA	1,630	1,590	1,530	1,570	1,510	1,580	19,262
TX	1,675	1,605	1,550	1,625	1,600	1,715	20,134
UT	1,840	1,810	1,740	1,765	1,685	1,765	20,894
VT	1,585	1,535	1,470	1,490	1,455	1,525	18,400
VA	1,425	1,410	1,360	1,435	1,410	1,495	17,612
WA	2,000	1,990	1,900	1,920	1,840	1,900	23,344
WI	1,670	1,650	1,580	1,625	1,565	1,635	19,546
23-Sts	1,744	1,717	1,650	1,700	1,654	1,729	20,701
US ²	1,713	1,688	1,623	1,675	1,630	1,704	20,395

¹ Excludes milk sucked by calves.

² U.S. monthly estimates are derived by proportionally allocating the quarterly estimates using the 23-state monthly total.

**Milk Produced per Cow: by Month,
State, 23 States and United States, 2009 ¹**

State	Jan	Feb	Mar	Apr	May	Jun	
	<i>Pounds</i>	<i>Pounds</i>	<i>Pounds</i>	<i>Pounds</i>	<i>Pounds</i>	<i>Pounds</i>	
AZ	1,985	1,865	2,110	2,055	2,055	1,940	
CA	1,885	1,720	1,925	1,885	1,935	1,820	
CO	1,940	1,780	1,980	1,920	2,000	1,940	
FL	1,660	1,540	1,760	1,710	1,700	1,535	
ID	1,810	1,640	1,840	1,800	1,910	1,880	
IL	1,610	1,510	1,675	1,625	1,670	1,570	
IN	1,695	1,560	1,750	1,710	1,785	1,685	
IA	1,700	1,550	1,730	1,710	1,785	1,710	
KS	1,800	1,655	1,835	1,775	1,835	1,735	
MI	1,865	1,700	1,895	1,865	1,955	1,890	
MN	1,620	1,475	1,640	1,605	1,680	1,630	
MO	1,270	1,150	1,320	1,320	1,330	1,195	
NM	2,015	1,880	2,110	2,070	2,145	2,050	
NY	1,670	1,540	1,700	1,670	1,820	1,700	
OH	1,550	1,430	1,610	1,590	1,670	1,590	
OR	1,650	1,520	1,710	1,675	1,735	1,675	
PA	1,630	1,490	1,670	1,640	1,710	1,630	
TX	1,780	1,650	1,850	1,810	1,835	1,710	
UT	1,720	1,570	1,740	1,720	1,805	1,785	
VT	1,545	1,415	1,565	1,520	1,595	1,550	
VA	1,545	1,425	1,600	1,585	1,615	1,500	
WA	1,925	1,750	1,950	1,920	2,015	1,970	
WI	1,645	1,505	1,675	1,650	1,745	1,700	
23-Sts	1,752	1,605	1,795	1,760	1,834	1,749	
US ²	1,733	1,588	1,776	1,740	1,812	1,726	
	Jul	Aug	Sep	Oct	Nov	Dec	Annual Avg.
AZ	1,800	1,790	1,690	1,840	1,840	2,005	23,028
CA	1,815	1,820	1,735	1,815	1,775	1,865	22,000
CO	1,970	1,950	1,880	1,920	1,860	1,900	23,089
FL	1,450	1,325	1,180	1,230	1,360	1,535	18,061
ID	1,930	1,940	1,850	1,870	1,790	1,850	22,091
IL	1,580	1,530	1,480	1,550	1,510	1,600	18,873
IN	1,725	1,670	1,620	1,680	1,610	1,675	20,137
IA	1,740	1,700	1,630	1,690	1,670	1,750	20,367
KS	1,735	1,745	1,675	1,750	1,725	1,785	21,085
MI	1,945	1,910	1,835	1,860	1,805	1,910	22,445
MN	1,670	1,620	1,545	1,580	1,545	1,630	19,230
MO	1,195	1,180	1,110	1,170	1,170	1,230	14,654
NM	2,050	2,000	1,980	2,020	1,970	2,015	24,320
NY	1,735	1,690	1,620	1,640	1,605	1,675	20,071
OH	1,630	1,570	1,500	1,540	1,510	1,580	18,744
OR	1,695	1,650	1,595	1,615	1,560	1,625	19,719
PA	1,640	1,610	1,560	1,600	1,560	1,620	19,360
TX	1,700	1,680	1,660	1,720	1,710	1,795	20,898
UT	1,840	1,835	1,760	1,780	1,740	1,795	20,988
VT	1,570	1,520	1,485	1,495	1,460	1,545	18,289
VA	1,510	1,450	1,405	1,475	1,455	1,525	18,083
WA	2,015	1,995	1,915	1,940	1,865	1,940	23,171
WI	1,765	1,730	1,655	1,675	1,630	1,705	20,079
23-Sts	1,771	1,745	1,675	1,720	1,681	1,761	20,848
US ²	1,744	1,718	1,649	1,695	1,658	1,737	20,576

¹ Excludes milk sucked by calves.

² U.S. monthly estimates are derived by proportionally allocating the quarterly estimates using the 23-state monthly total.

**Milk Production: Total by Month, State,
23 States, and United States, 2008¹**

State	Jan	Feb	Mar	Apr	May	Jun	
	<i>Million Pounds</i>	<i>Million Pounds</i>	<i>Million Pounds</i>	<i>Million Pounds</i>	<i>Million Pounds</i>	<i>Million Pounds</i>	
AZ	374	363	407	399	403	363	
CA	3,492	3,330	3,638	3,515	3,583	3,417	
CO	237	227	245	243	253	248	
FL	186	184	199	188	195	173	
ID	999	940	1,018	1,005	1,062	1,047	
IL	166	155	167	165	170	160	
IN	286	268	283	276	291	274	
IA	363	346	374	361	376	359	
KS	198	189	206	200	206	195	
MI	657	605	645	638	677	653	
MN	745	704	755	732	762	734	
MO	135	129	143	147	152	136	
NM	638	607	677	681	698	670	
NY	1,039	995	1,058	1,045	1,108	1,052	
OH	428	405	437	444	468	440	
OR	192	180	194	190	197	189	
PA	900	849	922	917	943	890	
TX	677	661	734	726	742	705	
UT	144	135	146	146	153	151	
VT	221	209	223	218	224	219	
VA	151	144	156	154	155	138	
WA	477	451	488	476	494	481	
WI	2,044	1,931	2,077	2,027	2,139	2,066	
23-Sts	14,749	14,007	15,192	14,893	15,451	14,760	
US ³	15,975	15,175	16,459	16,119	16,707	15,942	
	Jul	Aug	Sep	Oct	Nov	Dec	Annual Total ²
AZ	336	325	316	341	346	376	4,349
CA	3,417	3,397	3,275	3,386	3,312	3,441	41,203
CO	252	251	241	246	240	252	2,935
FL	165	149	139	146	157	179	2,060
ID	1,090	1,093	1,036	1,036	981	1,008	12,315
IL	155	148	145	152	150	161	1,894
IN	274	263	257	270	265	280	3,287
IA	357	357	350	363	350	363	4,319
KS	202	200	195	203	205	216	2,415
MI	669	655	630	651	628	655	7,763
MN	742	728	693	725	712	750	8,782
MO	130	124	122	130	129	138	1,615
NM	677	647	632	641	635	662	7,865
NY	1,058	1,058	995	1,013	986	1,025	12,432
OH	436	426	405	420	404	417	5,130
OR	192	189	183	186	179	183	2,254
PA	890	871	838	862	827	866	10,575
TX	709	682	659	696	688	737	8,416
UT	156	154	148	150	143	150	1,776
VT	222	215	204	207	202	212	2,576
VA	138	137	132	139	137	145	1,726
WA	490	488	466	470	451	464	5,696
WI	2,091	2,066	1,980	2,036	1,963	2,052	24,472
23-Sts	14,848	14,623	14,041	14,469	14,090	14,732	175,855
US ³	15,992	15,752	15,126	15,615	15,212	15,908	189,982

¹ Excludes milk sucked by calves.

² Total milk production for year.

³ U.S. monthly estimates are derived by proportionally allocating the quarterly estimates using the 23-state monthly total.

**Milk Production: Total by Month, State,
23 States, and United States, 2009¹**

State	Jan	Feb	Mar	Apr	May	Jun	
	<i>Million Pounds</i>	<i>Million Pounds</i>	<i>Million Pounds</i>	<i>Million Pounds</i>	<i>Million Pounds</i>	<i>Million Pounds</i>	
AZ	375	352	399	386	378	341	
CA	3,453	3,139	3,505	3,433	3,512	3,283	
CO	250	228	253	246	256	244	
FL	196	180	206	200	199	178	
ID	1,003	900	1,012	992	1,056	1,032	
IL	164	154	171	166	170	160	
IN	283	261	292	286	300	283	
IA	366	333	372	368	384	368	
KS	225	205	224	213	222	205	
MI	660	602	673	664	698	675	
MN	758	690	768	751	788	764	
MO	137	123	143	145	146	130	
NM	673	626	703	687	712	670	
NY	1,042	959	1,059	1,040	1,134	1,059	
OH	429	396	446	440	464	442	
OR	190	173	195	191	198	191	
PA	897	821	919	900	935	888	
TX	765	710	796	778	789	732	
UT	146	133	148	146	152	148	
VT	212	192	213	207	217	209	
VA	150	138	155	152	155	144	
WA	464	420	466	459	484	471	
WI	2,064	1,889	2,104	2,072	2,192	2,137	
23-Sts	14,902	13,624	15,222	14,922	15,541	14,754	
US ³	16,135	14,754	16,485	16,148	16,805	15,935	
	Jul	Aug	Sep	Oct	Nov	Dec	Annual Total ²
AZ	308	306	282	305	309	335	4,076
CA	3,249	3,243	3,069	3,207	3,133	3,286	39,512
CO	244	240	220	223	216	220	2,840
FL	167	151	135	139	154	172	2,077
ID	1,062	1,063	1,010	1,021	981	1,018	12,150
IL	161	156	151	157	153	162	1,925
IN	290	279	272	282	272	283	3,383
IA	374	366	350	363	359	376	4,379
KS	203	204	191	196	195	205	2,488
MI	692	678	651	660	639	676	7,968
MN	783	760	725	741	725	766	9,019
MO	129	125	117	123	123	127	1,568
NM	658	640	630	640	624	641	7,904
NY	1,077	1,044	1,000	1,007	981	1,022	12,424
OH	453	436	417	425	414	430	5,192
OR	193	188	182	184	178	185	2,248
PA	894	877	846	862	839	873	10,551
TX	719	706	691	710	706	738	8,840
UT	153	152	146	148	144	147	1,763
VT	212	205	199	200	196	207	2,469
VA	145	139	135	140	138	145	1,736
WA	482	473	456	466	449	471	5,561
WI	2,219	2,175	2,082	2,107	2,051	2,147	25,239
23-Sts	14,867	14,606	13,957	14,306	13,979	14,632	175,312
US ³	16,018	15,737	15,038	15,420	15,070	15,775	189,320

¹ Excludes milk sucked by calves.

² Total milk production for year.

³ U.S. monthly estimates are derived by proportionally allocating the quarterly estimates using the 23-state monthly total.

**Milk Cows and Production: Number and Milk Produced
by Quarter, State, and United States, 2008**

State	Milk Cows ¹				Milk Production ²			
	Jan-Mar	Apr-Jun	Jul-Sep	Oct-Dec	Jan-Mar	Apr-Jun	Jul-Sep	Oct-Dec
	<i>1,000 Head</i>	<i>1,000 Head</i>	<i>1,000 Head</i>	<i>1,000 Head</i>	<i>Million Pounds</i>	<i>Million Pounds</i>	<i>Million Pounds</i>	<i>Million Pounds</i>
AL	12.0	12.0	12.0	12.0	53	51	38	42
AK	0.6	0.6	0.6	0.6	2.1	1.8	1.7	1.6
AZ	185	186	185	188	1,144	1,165	977	1,063
AR	16.0	15.0	14.0	14.0	52	52	41	41
CA	1,840	1,846	1,846	1,843	10,460	10,515	10,089	10,139
CO	126	127	130	130	709	744	744	738
CT	19.0	19.0	19.0	19.0	94	94	88	88
DE	6.5	6.5	6.5	6.5	30.0	29.0	25.0	26.0
FL	120	120	120	119	569	556	453	482
GA	77	77	75	75	361	364	305	325
HI	2.0	1.7	1.6	1.6	4.7	4.6	4.4	4.8
ID	537	548	555	554	2,957	3,114	3,219	3,025
IL	102	102	102	102	488	495	448	463
IN	167	167	166	167	837	841	794	815
IA	216	216	215	215	1,083	1,096	1,064	1,076
KS	115	115	117	121	593	601	597	624
KY	91	92	88	87	323	324	272	291
LA	27	26	26	25	95	90	66	68
ME	33	33	33	33	147	154	154	148
MD	57	56	56	56	271	267	242	249
MA	15.0	15.0	14.5	14.5	64	66	63	61
MI	344	349	352	353	1,907	1,968	1,954	1,934
MN	463	463	465	467	2,204	2,228	2,163	2,187
MS	21	21	20	19	86	80	62	63
MO	110	111	111	110	407	435	376	397
MT	17.0	17.0	17.0	16.0	76	80	80	77
NE	57	57	59	59	265	268	272	278
NV	27	27	27	27	138	134	140	147
NH	15.0	15.0	15.0	15.0	76	77	74	72
NJ	10.0	10.0	9.5	9.5	44	45	40	40
NM	339	341	338	334	1,922	2,049	1,956	1,938
NY	626	626	626	625	3,092	3,205	3,111	3,024
NC	48	47	46	46	239	233	207	213
ND	26	26	26	25	107	107	104	100
OH	279	282	280	277	1,270	1,352	1,267	1,241
OK	66	64	63	63	277	268	255	261
OR	114	113	115	115	566	576	564	548
PA	551	548	547	548	2,671	2,750	2,599	2,555
RI	1.1	1.1	1.1	1.1	4.8	5.2	5.0	4.9
SC	18.0	18.0	18.0	18.0	90	88	70	74
SD	87	89	91	93	426	446	458	466
TN	61	59	58	59	256	255	212	225
TX	405	413	424	429	2,072	2,173	2,050	2,121
UT	85	85	85	85	425	450	458	443
VT	140	140	140	139	653	661	641	621
VA	98	98	97	97	451	447	407	421
WA	244	244	245	245	1,416	1,451	1,444	1,385
WV	12.0	12.0	12.0	12.0	46	46	45	44
WI	1,250	1,251	1,252	1,254	6,052	6,232	6,137	6,051
WY	7.0	7.0	7.0	7.0	33.6	34.5	34.1	33.5
US ³	9,285	9,315	9,329	9,331	47,609	48,768	46,870	46,735

¹ Quarterly average includes dry cows, excludes heifers not yet fresh.

² Excludes milk sucked by calves.

³ May not add due to rounding.

**Milk Cows and Production: Number and Milk Produced
by Quarter, State, and United States, 2009**

State	Milk Cows ¹				Milk Production ²			
	Jan-Mar	Apr-Jun	Jul-Sep	Oct-Dec	Jan-Mar	Apr-Jun	Jul-Sep	Oct-Dec
	<i>1,000 Head</i>	<i>1,000 Head</i>	<i>1,000 Head</i>	<i>1,000 Head</i>	<i>Million Pounds</i>	<i>Million Pounds</i>	<i>Million Pounds</i>	<i>Million Pounds</i>
AL	11.0	11.0	11.0	11.0	48	45	35	36
AK	0.6	0.6	0.6	0.6	1.5	1.5	1.5	1.5
AZ	189	183	170	167	1,126	1,105	896	949
AR	13.5	13.0	13.0	13.0	43	46	38	37
CA	1,826	1,813	1,780	1,765	10,097	10,228	9,561	9,626
CO	128	127	121	116	731	746	704	659
CT	18.5	18.5	18.5	18.5	91	92	86	86
DE	6.5	6.0	5.5	6.0	28.0	27.0	23.0	24.0
FL	117	117	114	113	582	577	453	465
GA	74	75	75	76	378	378	318	321
HI	1.5	1.5	1.5	1.6	5.3	5.5	5.2	5.3
ID	551	551	548	548	2,915	3,080	3,135	3,020
IL	102	102	102	101	489	496	468	472
IN	167	168	168	169	836	869	841	837
IA	215	215	215	215	1,071	1,120	1,090	1,098
KS	124	120	116	113	654	640	598	596
KY	86	84	83	81	313	320	280	279
LA	24	23	22	21	83	76	56	58
ME	33	33	33	33	146	152	152	146
MD	56	56	55	54	260	262	238	244
MA	14.5	14.5	14.0	14.0	62	64	61	59
MI	354	357	355	354	1,935	2,037	2,021	1,975
MN	468	469	469	469	2,216	2,303	2,268	2,232
MS	19.0	18.5	17.5	17.0	74	70	51	55
MO	108	110	106	104	403	421	371	373
MT	15.0	15.0	15.0	15.0	75	76	75	73
NE	61	62	61	60	294	306	302	301
NV	28	28	28	28	152	154	153	152
NH	15.0	15.0	15.0	15.0	73	76	73	71
NJ	9.5	9.0	9.0	8.5	43	42	40	36
NM	333	330	320	317	2,002	2,069	1,928	1,905
NY	623	623	619	612	3,060	3,233	3,121	3,010
NC	46	46	45	44	234	235	207	208
ND	25	23	22	21	98	98	96	93
OH	277	278	278	274	1,271	1,346	1,306	1,269
OK	62	60	58	57	265	260	238	239
OR	114	114	114	114	558	580	563	547
PA	550	547	544	539	2,637	2,723	2,617	2,574
RI	1.1	1.1	1.1	1.1	5.0	5.2	4.8	4.6
SC	17.0	17.5	17.5	17.5	86	86	73	74
SD	94	95	95	93	460	483	481	468
TN	58	56	55	54	244	246	210	209
TX	430	429	420	412	2,271	2,299	2,116	2,154
UT	85	84	83	83	427	446	451	439
VT	136	136	135	134	617	633	616	603
VA	97	96	96	95	443	451	419	423
WA	240	239	238	241	1,350	1,414	1,411	1,386
WV	11.0	11.0	11.0	10.0	41	42	41	38
WI	1,255	1,256	1,257	1,258	6,057	6,401	6,476	6,305
WY	5.0	5.0	5.0	6.0	23.3	22.9	24.2	29.3
US ³	9,295	9,262	9,155	9,090	47,374	48,888	46,793	46,265

¹ Quarterly average includes dry cows, excludes heifers not yet fresh.

² Excludes milk sucked by calves.

³ May not add due to rounding.

**Number of Licensed Dairy Herds,
by State, United States, and Puerto Rico, 2008-2009**

	Licensed Dairy Herds ¹	
	2008	2009
	<i>Number</i>	<i>Number</i>
AL	65	65
AK	5	5
AZ	120	110
AR	150	140
CA	1,905	1,820
CO	140	130
CT	150	150
DE	55	50
FL	140	140
GA	270	270
HI	2	2
ID	635	600
IL	960	850
IN	1,670	1,680
IA	2,020	1,890
KS	425	415
KY	1,060	1,010
LA	200	180
ME	330	320
MD	570	540
MA	180	180
MI	2,390	2,310
MN	4,865	4,700
MS	160	140
MO	1,760	1,740
MT	80	75
NE	320	285
NV	25	25
NH	130	130
NJ	110	100
NM	160	150
NY	5,620	5,470
NC	300	290
ND	255	215
OH	3,360	3,310
OK	310	270
OR	300	290
PA	7,670	7,400
RI	20	20
SC	80	95
SD	490	425
TN	550	530
TX	670	650
UT	260	240
VT	1,100	1,050
VA	725	715
WA	500	470
WV	110	110
WI	13,730	13,170
WY	25	20
US	57,127	54,942

¹ Average number of dairy farms licensed to sell milk, based on counts collected from State and other regulatory agencies.

Reliability Statement

Survey Procedures: Primary data used to determine these estimates were obtained from a sample of producers. Individual States maintain a list of all known milk producers and information on the size of their herd. States use all known sources of producers to ensure that their lists are as complete as possible. Generally, all large producers and a sample of small producers are included in the survey. Questionnaires are mailed to producers near the end of the month to obtain data for the first day of the month. Additional reports are obtained by telephone, as needed, to supplement the mail response. Where feasible, States utilize state and federal administrative data, rather than conduct a monthly or quarterly survey, to estimate milk production. This eliminates duplication of data gathering by different government agencies. Indications of milk cow inventory are also obtained in the January and July Cattle Surveys.

Estimation Procedures: State offices prepare these estimates by using a combination of survey indications, historic trends, and any available administrative data. Individual State estimates are reviewed by the Agricultural Statistics Board for reasonableness.

Revision Policy: Milk production, rate per cow, and number of cows are subject to revision the following month for monthly States or the following quarter for the quarterly States. Normally, Federal Market Order sales are the main basis for revisions. However, data for all orders are not available in time for this revision. Estimates are again subject to revisions in February each year based on additional administrative data. In the event that additional changes are necessary, a third revision is possible in February the following year. Estimates are again reviewed after data from the five-year Census of Agriculture are available. No revisions are made after that date.

Reliability: Since all operations with dairy animals are not included in the sample, survey estimates are subject to sampling variability. Survey results are also subject to non-sampling errors such as omissions, duplications, and mistakes in reporting, recording, and processing the data. The effects of these errors cannot be measured directly. They are minimized through rigid quality controls in the data collection process and through a careful review of all reported data for consistency and reasonableness.

To assist users in evaluating the reliability of the estimates in this report, the "Root Mean Square Error" is shown for selected items on the next page. The "Root Mean Square Error" is a statistical measure based on past performance and is computed using the differences between first and final estimates. The "Root Mean Square Error" for the 23 State milk cow inventory estimates over the past 24 months is 0.4 percent. This means that chances are 2 out of 3 that the final estimate will not be above or below the current estimate of 8.32 million head by more than 0.4 percent. Chances are 9 out of 10 that the difference will not exceed 0.7 percent.

Reliability of Monthly Milk Production Estimates ¹

Item	Root Mean Square Error	90% Confidence Level		Difference Between First and Latest Estimates			Months	
				Average	Smallest	Largest	First Above Latest	First Below Latest
				<i>Million Pounds</i>	<i>Million Pounds</i>	<i>Million Pounds</i>	<i>Number</i>	<i>Number</i>
Milk Production	<i>Percent</i> 0.2	<i>Percent</i> 0.4	<i>Million Pounds</i> 62	<i>Million Pounds</i> 28	<i>Million Pounds</i> 4	<i>Million Pounds</i> 101	<i>Number</i> 2	<i>Number</i> 22
All Milk Cows	<i>Percent</i> 0.4	<i>Percent</i> 0.7	<i>1,000 Head</i> 57	<i>1,000 Head</i> 25	<i>1,000 Head</i> 0	<i>1,000 Head</i> 55	<i>Number</i> 5	<i>Number</i> 16

¹ Based on the 23 State total for the past 24 months.

Information Contacts

Listed below are the commodity specialists in the Livestock Branch of the National Agricultural Statistics Service to contact for additional information.

Dan Kerestes, Chief, Livestock Branch (202) 720-3570

Livestock Section

- Scott Hollis, Head, Livestock Section (202) 690-2424
- Jim Collom - Dairy Products (202) 690-3236
- Joe Gaynor - Dairy Products Prices (202) 690-2168
- Jason Hardegree - Cattle, Cattle on Feed (202) 720-3040
- Sherry Bertramsen - Livestock Slaughter (515) 284-4340
- Everett Olbert - Sheep and Goats (202) 720-4751
- Mike Miller - Milk Production and Milk Cows (202) 720-3278
- Nick Streff - Hogs and Pigs (202) 720-3106

ACCESS TO REPORTS!!

For your convenience, there are several ways to obtain NASS reports, data products, and services:

INTERNET ACCESS

All NASS reports are available free of charge. For free access, connect to the Internet and go to the NASS Home Page at: www.nass.usda.gov.

E-MAIL SUBSCRIPTION

All NASS reports are available by subscription free of charge direct to your e-mail address. Starting with the NASS Home Page at www.nass.usda.gov, under the right navigation, *Receive reports by Email*, click on **National** or **State**. Follow the instructions on the screen.

PRINTED REPORTS OR DATA PRODUCTS

CALL OUR TOLL-FREE ORDER DESK: 800-999-6779 (U.S. and Canada)
Other areas, please call 703-605-6220 FAX: 703-605-6880
(Visa, MasterCard, check, or money order acceptable for payment.)

ASSISTANCE

For **assistance** with general agricultural statistics or further information about NASS or its products or services, contact the **Agricultural Statistics Hotline** at **800-727-9540**, 7:30 a.m. to 4:00 p.m. ET, or e-mail: nass@nass.usda.gov.

The U.S. Department of Agriculture (USDA) prohibits discrimination in all its programs and activities on the basis of race, color, national origin, age, disability, and where applicable, sex, marital status, familial status, parental status, religion, sexual orientation, genetic information, political beliefs, reprisal, or because all or a part of an individual's income is derived from any public assistance program. (Not all prohibited bases apply to all programs.) Persons with disabilities who require alternative means for communication of program information (Braille, large print, audiotape, etc.) should contact USDA's TARGET Center at (202) 720-2600 (voice and TDD).

To file a complaint of discrimination, write to USDA, Director, Office of Civil Rights, 1400 Independence Avenue, S.W., Washington, D.C. 20250-9410, or call (800) 795-3272 (voice) or (202) 720-6382 (TDD). USDA is an equal opportunity provider and employer.