

# Milk Production

Released April 19, 2010, by the National Agricultural Statistics Service (NASS), Agricultural Statistics Board, U.S. Department of Agriculture. For information on *Milk Production* call Mike Miller at 202-720-3278, office hours 7:30 a.m. to 4:00 p.m. ET.

## March Milk Production up 0.9 Percent

**Milk production** in the 23 major States during March totaled 15.4 billion pounds, up 0.9 percent from March 2009. February revised production at 13.7 billion pounds, was up 0.3 percent from February 2009. The February revision represented an increase of 17 million pounds or 0.1 percent from last month's preliminary production estimate.

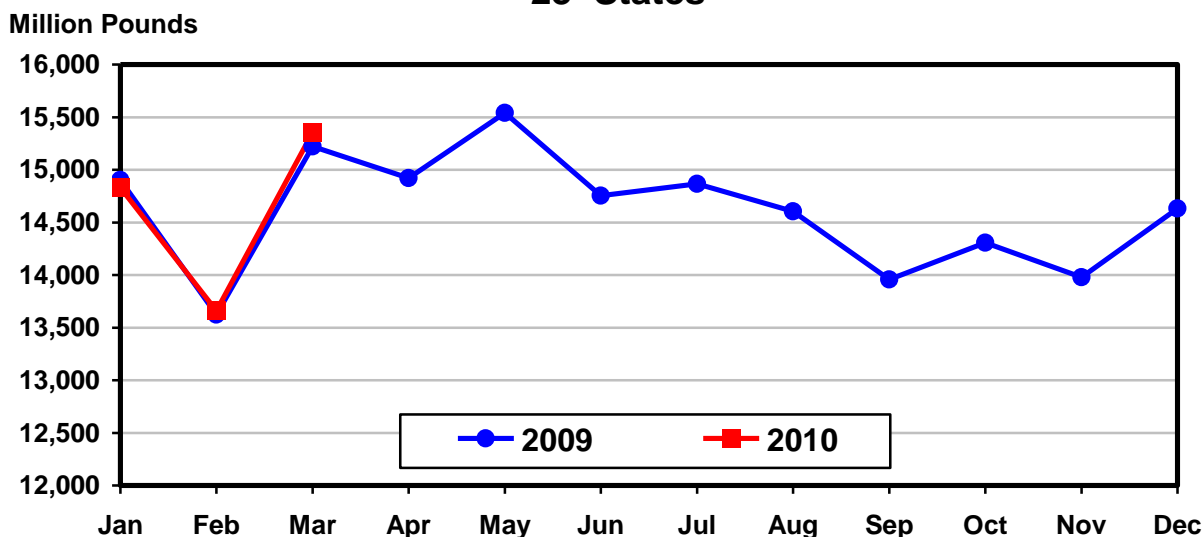
**Production per cow** in the 23 major States averaged 1,846 pounds for March, 51 pounds above March 2009.

**The number of milk cows** on farms in the 23 major States was 8.32 million head, 162,000 head less than March 2009, but 1,000 head more than February 2010.

## January - March Milk Production down 0.1 Percent

Milk production in the U.S. during the January - March quarter totaled 47.3 billion pounds, down 0.1 percent from the January - March quarter last year. The average number of milk cows in the U.S. during the quarter was 9.09 million head, 206,000 head less than the same period last year.

## Monthly Milk Production 23 States



**Milk Cows and Production: By Quarter, United States, 2009-2010**<sup>1</sup>

Quarter	Milk Cows <sup>2</sup>		Milk Per Cow <sup>3</sup>		Milk Production <sup>3</sup>		
	2009	2010	2009	2010	2009	2010	Change From 2009
	<i>1,000 Head</i>	<i>1,000 Head</i>	<i>Pounds</i>	<i>Pounds</i>	<i>Million Pounds</i>	<i>Million Pounds</i>	<i>Percent</i>
Jan-Mar	9,295	9,089	5,097	5,208	47,374	47,331	-0.1
Apr-Jun	9,262		5,278		48,888		
Jul-Sep	9,155		5,111		46,793		
Oct-Dec	9,090		5,090		46,265		
Annual	9,201		20,576		189,320		

<sup>1</sup> May not add due to rounding.

<sup>2</sup> Includes dry cows, excludes heifers not yet fresh.

<sup>3</sup> Excludes milk sucked by calves.

**Milk Cows and Production: By Month, 23 Selected States, 2009-2010**<sup>1</sup>

Month	Milk Cows <sup>2</sup>		Milk Per Cow <sup>3</sup>		Milk Production <sup>3</sup>		
	2009	2010	2009	2010	2009	2010	Change from 2009
	<i>1,000 Head</i>	<i>1,000 Head</i>	<i>Pounds</i>	<i>Pounds</i>	<i>Million Pounds</i>	<i>Million Pounds</i>	<i>Percent</i>
Jan	8,506	8,315	1,752	1,784	14,902	14,831	-0.5
Feb	8,486	8,319	1,605	1,642	13,624	13,660	0.3
Mar	8,482	8,320	1,795	1,846	15,222	15,355	0.9
Apr	8,480		1,760		14,922		
May	8,475		1,834		15,541		
Jun	8,434		1,749		14,754		
Jul	8,397		1,771		14,867		
Aug	8,372		1,745		14,606		
Sep	8,335		1,675		13,957		
Oct	8,316		1,720		14,306		
Nov	8,314		1,681		13,979		
Dec	8,311		1,761		14,632		
Annual	8,409		20,848		175,312		

<sup>1</sup> 2010 previous month revised.

<sup>2</sup> Includes dry cows, excludes heifers not yet fresh.

<sup>3</sup> Excludes milk sucked by calves.

**Estimated Milk Cows and Production: By Month, United States, 2009-2010**<sup>1</sup>

Month	Milk Cows <sup>2</sup>		Milk Per Cow <sup>3</sup>		Milk Production <sup>3</sup>		
	2009	2010	2009	2010	2009	2010	Change From 2009
	<i>1,000 Head</i>	<i>1,000 Head</i>	<i>Pounds</i>	<i>Pounds</i>	<i>Million Pounds</i>	<i>Million Pounds</i>	<i>Percent</i>
Jan	9,312	9,086	1,733	1,762	16,135	16,010	-0.8
Feb	9,289	9,090	1,588	1,622	14,754	14,745	-0.1
Mar	9,283	9,090	1,776	1,824	16,485	16,576	0.6
Apr	9,282		1,740		16,148		
May	9,274		1,812		16,805		
Jun	9,230		1,726		15,935		
Jul	9,187		1,744		16,018		
Aug	9,159		1,718		15,737		
Sep	9,120		1,649		15,038		
Oct	9,096		1,695		15,420		
Nov	9,091		1,658		15,070		
Dec	9,082		1,737		15,775		
Annual	9,201		20,576		189,320		

<sup>1</sup> 2010 revised.

<sup>2</sup> Includes dry cows, excludes heifers not yet fresh.

<sup>3</sup> Excludes milk sucked by calves.

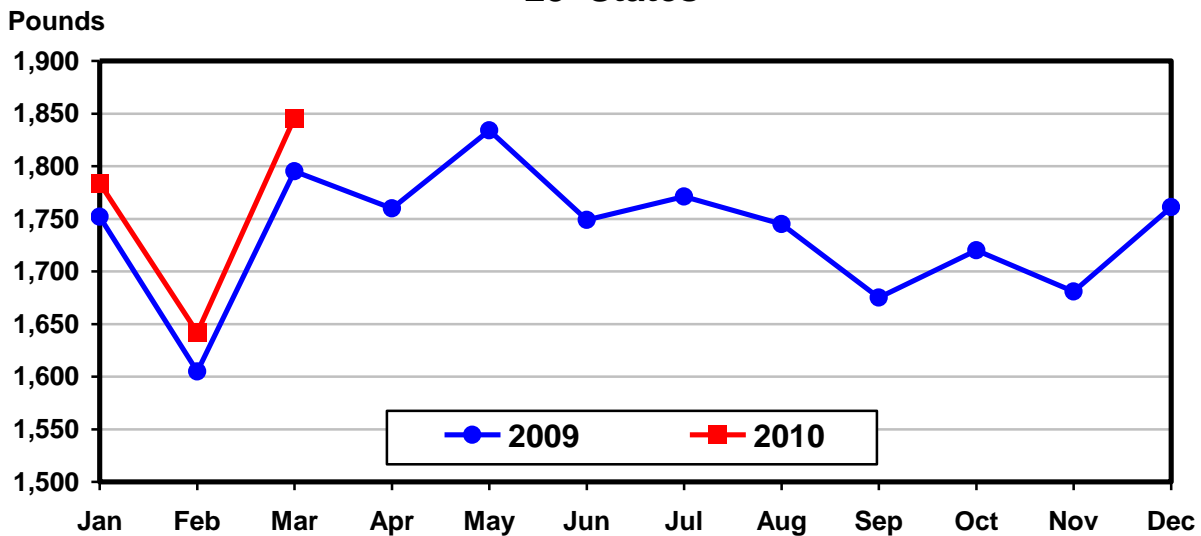
**Milk Cows and Production: By State, March 2009-2010**

State	Milk Cows <sup>1</sup>		Milk Per Cow <sup>2</sup>		Milk Production <sup>2</sup>		
	2009	2010	2009	2010	2009	2010	Change From 2009
	<i>1,000 Head</i>	<i>1,000 Head</i>	<i>Pounds</i>	<i>Pounds</i>	<i>Million Pounds</i>	<i>Million Pounds</i>	<i>Percent</i>
AZ	189	170	2,110	2,180	399	371	-7.0
CA	1,821	1,758	1,925	1,980	3,505	3,481	-0.7
CO	128	116	1,980	2,000	253	232	-8.3
FL	117	113	1,760	1,700	206	192	-6.8
ID	550	554	1,840	1,880	1,012	1,042	3.0
IL	102	101	1,675	1,715	171	173	1.2
IN	167	169	1,750	1,765	292	298	2.1
IA	215	210	1,730	1,775	372	373	0.3
KS	122	116	1,835	1,835	224	213	-4.9
MI	355	356	1,895	1,975	673	703	4.5
MN	468	470	1,640	1,695	768	797	3.8
MO	108	101	1,320	1,295	143	131	-8.4
NM	333	321	2,110	2,105	703	676	-3.8
NY	623	610	1,700	1,740	1,059	1,061	0.2
OH	277	268	1,610	1,680	446	450	0.9
OR	114	115	1,710	1,740	195	200	2.6
PA	550	540	1,670	1,730	919	934	1.6
TX	430	410	1,850	1,890	796	775	-2.6
UT	85	83	1,740	1,780	148	148	
VT	136	135	1,565	1,605	213	217	1.9
VA	97	95	1,600	1,560	155	148	-4.5
WA	239	249	1,950	2,020	466	503	7.9
WI	1,256	1,260	1,675	1,775	2,104	2,237	6.3
23-State Total	8,482	8,320	1,795	1,846	15,222	15,355	0.9

<sup>1</sup> Includes dry cows, excludes heifers not yet fresh.

<sup>2</sup> Excludes milk sucked by calves.

**Monthly Milk per Cow  
23 States**



**Milk Cows and Production: By State, February 2009-2010 <sup>1</sup>**

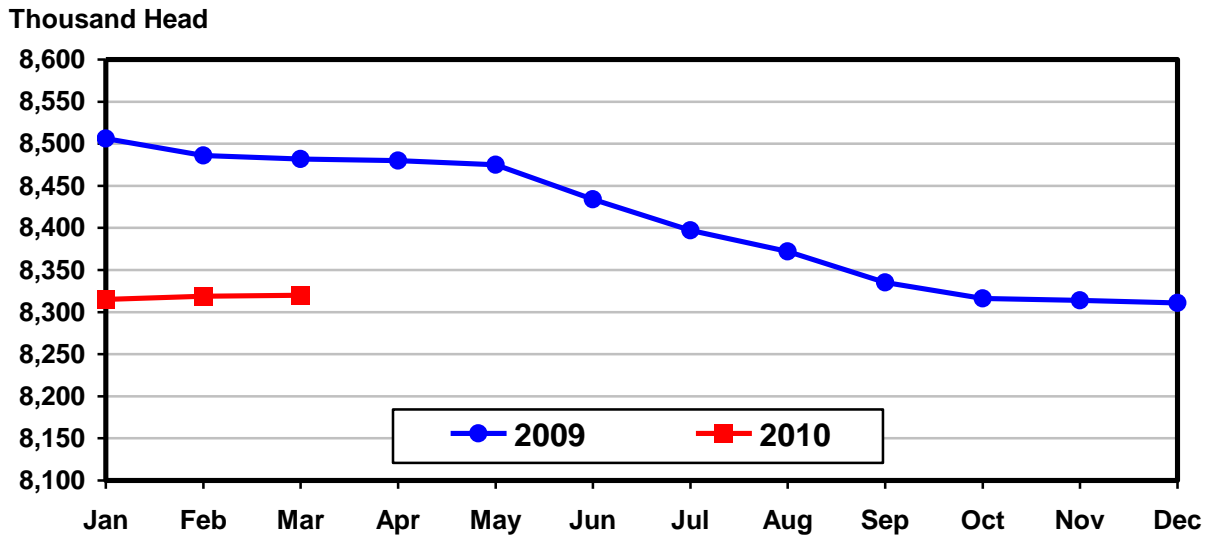
State	Milk Cows <sup>2</sup>		Milk per Cow <sup>3</sup>		Milk Production <sup>3</sup>		
	2009	2010	2009	2010	2009	2010	Change From 2009
	<i>1,000 Head</i>	<i>1,000 Head</i>	<i>Pounds</i>	<i>Pounds</i>	<i>Million Pounds</i>	<i>Million Pounds</i>	<i>Percent</i>
AZ	189	170	1,865	1,930	352	328	-6.8
CA	1,825	1,760	1,720	1,755	3,139	3,089	-1.6
CO	128	116	1,780	1,800	228	209	-8.3
FL	117	113	1,540	1,595	180	180	
ID	549	554	1,640	1,690	900	936	4.0
IL	102	101	1,510	1,530	154	155	0.6
IN	167	169	1,560	1,560	261	264	1.1
IA	215	213	1,550	1,575	333	335	0.6
KS	124	116	1,655	1,645	205	191	-6.8
MI	354	355	1,700	1,755	602	623	3.5
MN	468	470	1,475	1,510	690	710	2.9
MO	107	101	1,150	1,100	123	111	-9.8
NM	333	318	1,880	1,870	626	595	-5.0
NY	623	610	1,540	1,560	959	952	-0.7
OH	277	270	1,430	1,490	396	402	1.5
OR	114	114	1,520	1,570	173	179	3.5
PA	551	541	1,490	1,520	821	822	0.1
TX	430	410	1,650	1,640	710	672	-5.4
UT	85	83	1,570	1,625	133	135	1.5
VT	136	134	1,415	1,440	192	193	0.5
VA	97	95	1,425	1,400	138	133	-3.6
WA	240	246	1,750	1,825	420	449	6.9
WI	1,255	1,260	1,505	1,585	1,889	1,997	5.7
23-State Total	8,486	8,319	1,605	1,642	13,624	13,660	0.3

<sup>1</sup> 2010 revised.

<sup>2</sup> Includes dry cows, excludes heifers not yet fresh.

<sup>3</sup> Excludes milk sucked by calves.

**Monthly Milk Cows  
23 States**



**Milk Cows and Production: By State and United States,  
Revised October-December, 2008-2009**

State	Oct-Dec Milk Cows <sup>1</sup>		Oct-Dec Milk Production <sup>2</sup>		Change From 2008
	2008	2009	2008	2009	
	<i>1,000 Head</i>	<i>1,000 Head</i>	<i>Million Pounds</i>	<i>Million Pounds</i>	<i>Percent</i>
AL	12.0	11.0	42	36	-14.3
AK	0.6	0.6	1.6	1.5	-6.3
AZ	188	167	1,063	949	-10.7
AR	14.0	13.0	41	37	-9.8
CA	1,843	1,765	10,139	9,626	-5.1
CO	130	116	738	659	-10.7
CT	19.0	18.5	88	86	-2.3
DE	6.5	6.0	26.0	24.0	-7.7
FL	119	113	482	465	-3.5
GA	75	76	325	321	-1.2
HI	1.6	1.6	4.8	5.3	10.4
ID	554	548	3,025	3,020	-0.2
IL	102	101	463	472	1.9
IN	167	169	815	837	2.7
IA	215	215	1,076	1,098	2.0
KS	121	113	624	596	-4.5
KY	87	81	291	279	-4.1
LA	25	21	68	58	-14.7
ME	33	33	148	146	-1.4
MD	56	54	249	244	-2.0
MA	14.5	14.0	61	59	-3.3
MI	353	354	1,934	1,975	2.1
MN	467	469	2,187	2,232	2.1
MS	19.0	17.0	63	55	-12.7
MO	110	104	397	373	-6.0
MT	16.0	15.0	77	73	-5.2
NE	59	60	278	301	8.3
NV	27	28	147	152	3.4
NH	15.0	15.0	72	71	-1.4
NJ	9.5	8.5	40	36	-10.0
NM	334	317	1,938	1,905	-1.7
NY	625	612	3,024	3,010	-0.5
NC	46	44	213	208	-2.3
ND	25	21	100	93	-7.0
OH	277	274	1,241	1,269	2.3
OK	63	57	261	239	-8.4
OR	115	114	548	547	-0.2
PA	548	539	2,555	2,574	0.7
RI	1.1	1.1	4.9	4.6	-6.1
SC	18.0	17.5	74	74	0.4
SD	93	93	466	468	0.4
TN	59	54	225	209	-7.1
TX	429	412	2,121	2,154	1.6
UT	85	83	443	439	-0.9
VT	139	134	621	603	-2.9
VA	97	95	421	423	0.5
WA	245	241	1,385	1,386	0.1
WV	12.0	10.0	44	38	-13.6
WI	1,254	1,258	6,051	6,305	4.2
WY	7.0	6.0	33.5	29.3	-12.5
US <sup>3</sup>	9,331	9,090	46,735	46,265	-1.0

<sup>1</sup> Includes dry cows, excludes heifers not yet fresh.

<sup>2</sup> Excludes milk sucked by calves.

<sup>3</sup> May not add due to rounding.

**Milk Cows and Production: By State and United States,  
Preliminary January-March, 2009-2010**

State	Jan-Mar Milk Cows <sup>1</sup>		Jan-Mar Milk Production <sup>2</sup>		Change From 2009
	2009	2010	2009	2010	
	<i>1,000 Head</i>	<i>1,000 Head</i>	<i>Million Pounds</i>	<i>Million Pounds</i>	<i>Percent</i>
AL	11.0	11.0	48	44	-8.3
AK	0.6	0.6	1.5	1.5	
AZ	189	170	1,126	1,046	-7.1
AR	13.5	13.0	43	41	-4.7
CA	1,826	1,759	10,097	9,940	-1.6
CO	128	116	731	665	-9.0
CT	18.5	18.5	91	92	1.1
DE	6.5	5.5	28.0	23.0	-17.9
FL	117	113	582	553	-5.0
GA	74	78	378	365	-3.4
HI	1.5	1.9	5.3	6.3	18.9
ID	551	553	2,915	3,003	3.0
IL	102	101	489	491	0.4
IN	167	169	836	846	1.2
IA	215	212	1,071	1,079	0.7
KS	124	116	654	611	-6.6
KY	86	79	313	296	-5.4
LA	24	20	83	67	-19.3
ME	33	32	146	144	-1.4
MD	56	53	260	248	-4.6
MA	14.5	14.5	62	64	3.2
MI	354	355	1,935	2,002	3.5
MN	468	470	2,216	2,280	2.9
MS	19.0	17.0	74	63	-14.9
MO	108	101	403	366	-9.2
MT	15.0	15.0	75	73	-2.7
NE	61	59	294	295	0.3
NV	28	28	152	151	-0.7
NH	15.0	15.0	73	75	2.7
NJ	9.5	8.5	43	37	-14.0
NM	333	319	2,002	1,912	-4.5
NY	623	610	3,060	3,050	-0.3
NC	46	43	234	216	-7.7
ND	25	21	98	94	-4.1
OH	277	270	1,271	1,287	1.3
OK	62	57	265	249	-6.0
OR	114	114	558	571	2.3
PA	550	541	2,637	2,638	
RI	1.1	1.1	5.0	4.9	-2.0
SC	17.0	17.0	86	80	-7.0
SD	94	93	460	466	1.3
TN	58	53	244	222	-9.0
TX	430	410	2,271	2,187	-3.7
UT	85	83	427	430	0.7
VT	136	134	617	622	0.8
VA	97	95	443	427	-3.6
WA	240	247	1,350	1,439	6.6
WV	11.0	10.0	41	39	-4.9
WI	1,255	1,260	6,057	6,401	5.7
WY	5.0	6.0	23.3	28.6	22.7
US <sup>3</sup>	9,295	9,089	47,374	47,331	-0.1

<sup>1</sup> Includes dry cows, excludes heifers not yet fresh.

<sup>2</sup> Excludes milk sucked by calves.

<sup>3</sup> May not add due to rounding.

## Reliability Statement

**Survey Procedures:** Primary data used to determine these estimates were obtained from a sample of producers. Individual States maintain a list of all known milk producers and information on the size of their herd. States use all known sources of producers to ensure that their lists are as complete as possible. Generally, all large producers and a sample of small producers are included in the survey. Questionnaires are mailed to producers near the end of the month to obtain data for the first day of the month. Additional reports are obtained by telephone, as needed, to supplement the mail response. Where feasible, States utilize state and federal administrative data, rather than conduct a monthly or quarterly survey, to estimate milk production. This eliminates duplication of data gathering by different government agencies. Indications of milk cow inventory are also obtained in the January and July Cattle Surveys.

**Estimation Procedures:** State offices prepare these estimates by using a combination of survey indications, historic trends, and any available administrative data. Individual State estimates are reviewed by the Agricultural Statistics Board for reasonableness.

**Revision Policy:** Milk production, rate per cow, and number of cows are subject to revision the following month for monthly States or the following quarter for the quarterly States. Normally, Federal Market Order sales are the main basis for revisions. However, data for all orders are not available in time for this revision. Estimates are again subject to revisions in February each year based on additional administrative data. In the event that additional changes are necessary, a third revision is possible in February the following year. Estimates are again reviewed after data from the five-year Census of Agriculture are available. No revisions are made after that date.

**Reliability:** Since all operations with dairy animals are not included in the sample, survey estimates are subject to sampling variability. Survey results are also subject to non-sampling errors such as omissions, duplications, and mistakes in reporting, recording, and processing the data. The effects of these errors cannot be measured directly. They are minimized through rigid quality controls in the data collection process and through a careful review of all reported data for consistency and reasonableness.

To assist users in evaluating the reliability of the estimates in this report, the "Root Mean Square Error" is shown for selected items on the next page. The "Root Mean Square Error" is a statistical measure based on past performance and is computed using the differences between first and final estimates. The "Root Mean Square Error" for milk cow inventory estimates over the past 20 quarters is 0.3 percent. This means that chances are 2 out of 3 that the final estimate will not be above or below the current estimate of 9.09 million head by more than 0.3 percent. Chances are 9 out of 10 that the difference will not exceed 0.6 percent.

**Reliability of Quarterly Milk Production Estimates <sup>1</sup>**

Item	Root Mean Square Error	90% Confidence Level		Difference Between First and Latest Estimates			Quarters	
				Average	Smallest	Largest	First Above Latest	First Below Latest
				<i>Million Pounds</i>	<i>Million Pounds</i>	<i>Million Pounds</i>	<i>Number</i>	<i>Number</i>
Milk Production	<i>Percent</i> 0.2	<i>Percent</i> 0.3	<i>Million Pounds</i> 124	<i>Million Pounds</i> 55	<i>Million Pounds</i> 3	<i>Million Pounds</i> 192	<i>Number</i> 4	<i>Number</i> 16
All Milk Cows	<i>Percent</i> 0.3	<i>Percent</i> 0.6	<i>1,000 Head</i> 50	<i>1,000 Head</i> 24	<i>1,000 Head</i> 0	<i>1,000 Head</i> 52	<i>Number</i> 2	<i>Number</i> 17

<sup>1</sup> Based on the U.S. total for the past 20 quarters.

**Information Contacts**

Listed below are the commodity specialists in the Livestock Branch of the National Agricultural Statistics Service to contact for additional information.

Dan Kerestes, Chief, Livestock Branch ..... (202) 720-3570

Scott Hollis, Head, Livestock Section ..... (202) 690-2424

    Jim Collom – Dairy Products ..... (202) 690-3236

    Joe Gaynor – Dairy Products Prices ..... (202) 690-2168

    Jason Hardegee – Cattle, Cattle on Feed ..... (202) 720-3040

    Sherry Bertramsen – Livestock Slaughter ..... (515) 284-4340

    Everett Olbert – Sheep and Goats ..... (202) 720-4751

    Mike Miller – Milk Production and Milk Cows ..... (202) 720-3278

    Nick Streff – Hogs and Pigs ..... (202) 720-3106



## ACCESS TO REPORTS!!

---

For your convenience, there are several ways to obtain NASS reports, data products, and services:

### INTERNET ACCESS

All NASS reports are available free of charge. For free access, connect to the Internet and go to the NASS Home Page at: [www.nass.usda.gov](http://www.nass.usda.gov).

### E-MAIL SUBSCRIPTION

All NASS reports are available by subscription free of charge direct to your e-mail address. Starting with the NASS Home Page at [www.nass.usda.gov](http://www.nass.usda.gov), under the right navigation, *Receive reports by Email*, click on **National** or **State**. Follow the instructions on the screen.

-----

### PRINTED REPORTS OR DATA PRODUCTS

**CALL OUR TOLL-FREE ORDER DESK: 800-999-6779 (U.S. and Canada)**  
**Other areas, please call 703-605-6220      FAX: 703-605-6880**  
**(Visa, MasterCard, check, or money order acceptable for payment.)**

-----

### ASSISTANCE

For **assistance** with general agricultural statistics or further information about NASS or its products or services, contact the **Agricultural Statistics Hotline** at **800-727-9540**, 7:30 a.m. to 4:00 p.m. ET, or e-mail: [nass@nass.usda.gov](mailto:nass@nass.usda.gov).

The U.S. Department of Agriculture (USDA) prohibits discrimination in all its programs and activities on the basis of race, color, national origin, age, disability, and where applicable, sex, marital status, familial status, parental status, religion, sexual orientation, genetic information, political beliefs, reprisal, or because all or a part of an individual's income is derived from any public assistance program. (Not all prohibited bases apply to all programs.) Persons with disabilities who require alternative means for communication of program information (Braille, large print, audiotape, etc.) should contact USDA's TARGET Center at (202) 720-2600 (voice and TDD).

To file a complaint of discrimination, write to USDA, Director, Office of Civil Rights, 1400 Independence Avenue, S.W., Washington, D.C. 20250-9410, or call (800) 795-3272 (voice) or (202) 720-6382 (TDD). USDA is an equal opportunity provider and employer.