

Milk Production

Released May 18, 2010, by the National Agricultural Statistics Service (NASS), Agricultural Statistics Board, U.S. Department of Agriculture. For information on *Milk Production* call Mike Miller at 202-720-3278, office hours 7:30 a.m. to 4:00 p.m. ET.

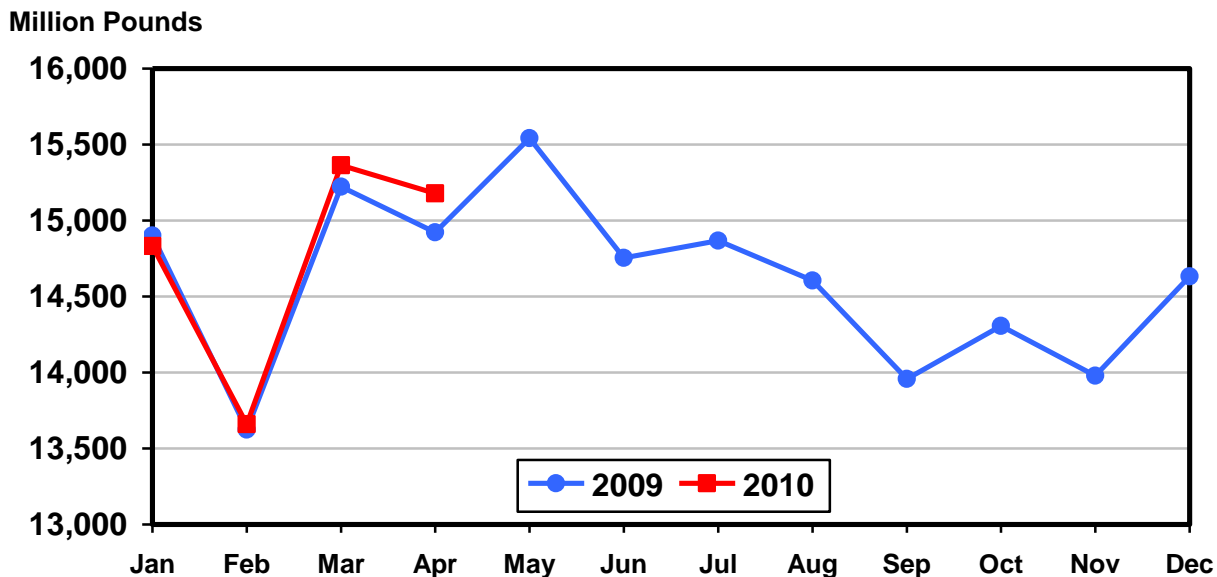
April Milk Production up 1.7 Percent

Milk production in the 23 major States during April totaled 15.2 billion pounds, up 1.7 percent from April 2009. March revised production at 15.4 billion pounds, was up 0.9 percent from March 2009. The March revision represented an increase of 9 million pounds or 0.1 percent from last month's preliminary production estimate.

Production per cow in the 23 major States averaged 1,823 pounds for April, 63 pounds above April 2009.

The number of milk cows on farms in the 23 major States was 8.33 million head, 155,000 head less than April 2009, but 3,000 head more than March 2010.

Monthly Milk Production 23 States



Milk Cows and Production: By Quarter, United States, 2009-2010¹

Quarter	Milk Cows ²		Milk Per Cow ³		Milk Production ³		
	2009	2010	2009	2010	2009	2010	Change From 2009
	<i>1,000 Head</i>	<i>1,000 Head</i>	<i>Pounds</i>	<i>Pounds</i>	<i>Million Pounds</i>	<i>Million Pounds</i>	<i>Percent</i>
Jan-Mar	9,295	9,090	5,097	5,208	47,374	47,340	-0.1
Apr-Jun	9,262		5,278		48,888		
Jul-Sep	9,155		5,111		46,793		
Oct-Dec	9,090		5,090		46,265		
Annual	9,201		20,576		189,320		

¹ May not add due to rounding.

² Includes dry cows, excludes heifers not yet fresh.

³ Excludes milk sucked by calves.

Milk Cows and Production: By Month, 23 Selected States, 2009-2010¹

Month	Milk Cows ²		Milk Per Cow ³		Milk Production ³		
	2009	2010	2009	2010	2009	2010	Change from 2009
	<i>1,000 Head</i>	<i>1,000 Head</i>	<i>Pounds</i>	<i>Pounds</i>	<i>Million Pounds</i>	<i>Million Pounds</i>	<i>Percent</i>
Jan	8,506	8,315	1,752	1,784	14,902	14,831	-0.5
Feb	8,486	8,319	1,605	1,642	13,624	13,660	0.3
Mar	8,482	8,322	1,795	1,846	15,222	15,364	0.9
Apr	8,480	8,325	1,760	1,823	14,922	15,178	1.7
May	8,475		1,834		15,541		
Jun	8,434		1,749		14,754		
Jul	8,397		1,771		14,867		
Aug	8,372		1,745		14,606		
Sep	8,335		1,675		13,957		
Oct	8,316		1,720		14,306		
Nov	8,314		1,681		13,979		
Dec	8,311		1,761		14,632		
Annual	8,409		20,848		175,312		

¹ 2010 previous month revised.

² Includes dry cows, excludes heifers not yet fresh.

³ Excludes milk sucked by calves.

Estimated Milk Cows and Production: By Month, United States, 2009-2010¹

Month	Milk Cows ²		Milk Per Cow ³		Milk Production ³		
	2009	2010	2009	2010	2009	2010	Change From 2009
	<i>1,000 Head</i>	<i>1,000 Head</i>	<i>Pounds</i>	<i>Pounds</i>	<i>Million Pounds</i>	<i>Million Pounds</i>	<i>Percent</i>
Jan	9,312	9,086	1,733	1,762	16,135	16,010	-0.8
Feb	9,289	9,090	1,588	1,622	14,754	14,745	-0.1
Mar	9,283	9,093	1,776	1,824	16,485	16,585	0.6
Apr	9,282	9,096	1,740	1,801	16,148	16,385	1.5
May	9,274		1,812		16,805		
Jun	9,230		1,726		15,935		
Jul	9,187		1,744		16,018		
Aug	9,159		1,718		15,737		
Sep	9,120		1,649		15,038		
Oct	9,096		1,695		15,420		
Nov	9,091		1,658		15,070		
Dec	9,082		1,737		15,775		
Annual	9,201		20,576		189,320		

¹ 2010 revised.

² Includes dry cows, excludes heifers not yet fresh.

³ Excludes milk sucked by calves.

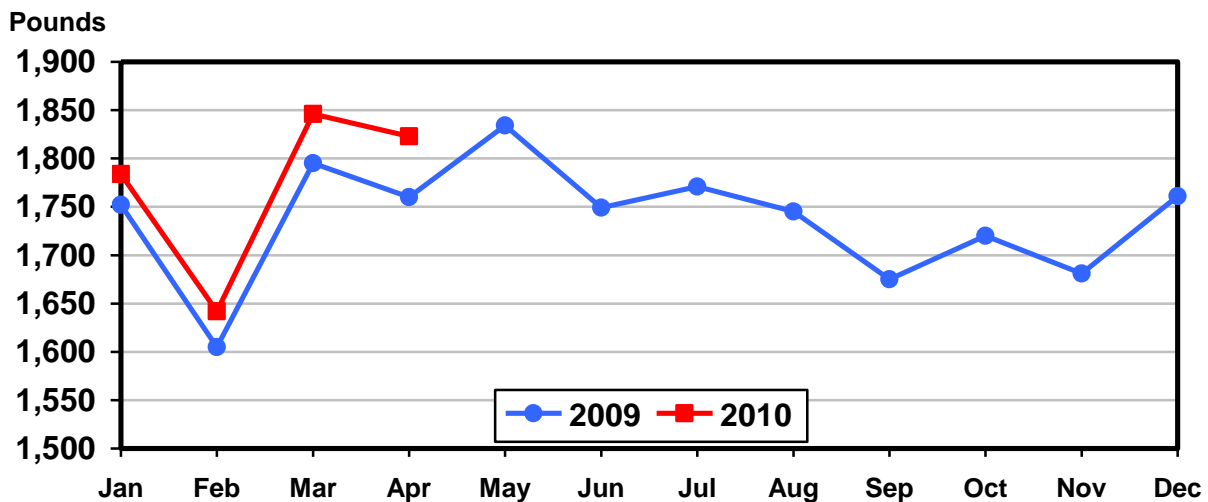
Milk Cows and Production: By State, April 2009-2010

State	Milk Cows ¹		Milk Per Cow ²		Milk Production ²		
	2009	2010	2009	2010	2009	2010	Change From 2009
	<i>1,000 Head</i>	<i>1,000 Head</i>	<i>Pounds</i>	<i>Pounds</i>	<i>Million Pounds</i>	<i>Million Pounds</i>	<i>Percent</i>
AZ	188	170	2,055	2,160	386	367	-4.9
CA	1,821	1,752	1,885	1,960	3,433	3,434	
CO	128	117	1,920	1,975	246	231	-6.1
FL	117	114	1,710	1,760	200	201	0.5
ID	551	554	1,800	1,850	992	1,025	3.3
IL	102	101	1,625	1,670	166	169	1.8
IN	167	169	1,710	1,745	286	295	3.1
IA	215	212	1,710	1,750	368	371	0.8
KS	120	116	1,775	1,805	213	209	-1.9
MI	356	357	1,865	1,955	664	698	5.1
MN	468	470	1,605	1,650	751	776	3.3
MO	110	101	1,320	1,325	145	134	-7.6
NM	332	323	2,070	2,090	687	675	-1.7
NY	623	610	1,670	1,735	1,040	1,058	1.7
OH	277	268	1,590	1,670	440	448	1.8
OR	114	115	1,675	1,710	191	197	3.1
PA	549	541	1,640	1,710	900	925	2.8
TX	430	410	1,810	1,855	778	761	-2.2
UT	85	84	1,720	1,780	146	150	2.7
VT	136	136	1,520	1,575	207	214	3.4
VA	96	95	1,585	1,560	152	148	-2.6
WA	239	249	1,920	1,975	459	492	7.2
WI	1,256	1,261	1,650	1,745	2,072	2,200	6.2
23-State Total	8,480	8,325	1,760	1,823	14,922	15,178	1.7

¹ Includes dry cows, excludes heifers not yet fresh.

² Excludes milk sucked by calves.

Monthly Milk per Cow 23 States



Milk Cows and Production: By State, March 2009-2010 ¹

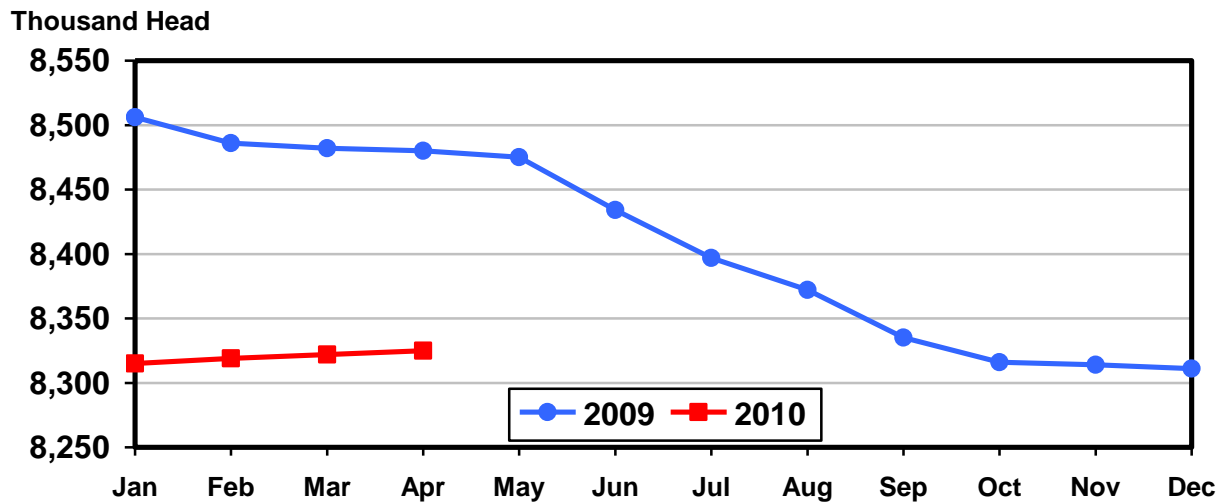
State	Milk Cows ²		Milk per Cow ³		Milk Production ³		
	2009	2010	2009	2010	2009	2010	Change From 2009
	<i>1,000 Head</i>	<i>1,000 Head</i>	<i>Pounds</i>	<i>Pounds</i>	<i>Million Pounds</i>	<i>Million Pounds</i>	<i>Percent</i>
AZ	189	170	2,110	2,180	399	371	-7.0
CA	1,821	1,757	1,925	1,980	3,505	3,479	-0.7
CO	128	116	1,980	2,000	253	232	-8.3
FL	117	113	1,760	1,820	206	206	
ID	550	554	1,840	1,880	1,012	1,042	3.0
IL	102	101	1,675	1,715	171	173	1.2
IN	167	169	1,750	1,765	292	298	2.1
IA	215	210	1,730	1,775	372	373	0.3
KS	122	116	1,835	1,820	224	211	-5.8
MI	355	356	1,895	1,975	673	703	4.5
MN	468	470	1,640	1,675	768	787	2.5
MO	108	101	1,320	1,295	143	131	-8.4
NM	333	321	2,110	2,105	703	676	-3.8
NY	623	610	1,700	1,755	1,059	1,071	1.1
OH	277	268	1,610	1,680	446	450	0.9
OR	114	115	1,710	1,750	195	201	3.1
PA	550	541	1,670	1,730	919	936	1.8
TX	430	410	1,850	1,890	796	775	-2.6
UT	85	84	1,740	1,790	148	150	1.4
VT	136	136	1,565	1,595	213	217	1.9
VA	97	95	1,600	1,570	155	149	-3.9
WA	239	249	1,950	2,020	466	503	7.9
WI	1,256	1,260	1,675	1,770	2,104	2,230	6.0
23-State Total	8,482	8,322	1,795	1,846	15,222	15,364	0.9

¹ 2010 revised.

² Includes dry cows, excludes heifers not yet fresh.

³ Excludes milk sucked by calves.

Monthly Milk Cows 23 States



Reliability Statement

Survey Procedures: Primary data used to determine these estimates were obtained from a sample of producers. Individual States maintain a list of all known milk producers and information on the size of their herd. States use all known sources of producers to ensure that their lists are as complete as possible. Generally, all large producers and a sample of small producers are included in the survey. Questionnaires are mailed to producers near the end of the month to obtain data for the first day of the month. Additional reports are obtained by telephone, as needed, to supplement the mail response. Where feasible, States utilize state and federal administrative data, rather than conduct a monthly or quarterly survey, to estimate milk production. This eliminates duplication of data gathering by different government agencies. Indications of milk cow inventory are also obtained in the January and July Cattle Surveys.

Estimation Procedures: State offices prepare these estimates by using a combination of survey indications, historic trends, and any available administrative data. Individual State estimates are reviewed by the Agricultural Statistics Board for reasonableness.

Revision Policy: Milk production, rate per cow, and number of cows are subject to revision the following month for monthly States or the following quarter for the quarterly States. Normally, Federal Market Order sales are the main basis for revisions. However, data for all orders are not available in time for this revision. Estimates are again subject to revisions in February each year based on additional administrative data. In the event that additional changes are necessary, a third revision is possible in February the following year. Estimates are again reviewed after data from the five-year Census of Agriculture are available. No revisions are made after that date.

Reliability: Since all operations with dairy animals are not included in the sample, survey estimates are subject to sampling variability. Survey results are also subject to non-sampling errors such as omissions, duplications, and mistakes in reporting, recording, and processing the data. The effects of these errors cannot be measured directly. They are minimized through rigid quality controls in the data collection process and through a careful review of all reported data for consistency and reasonableness.

To assist users in evaluating the reliability of the estimates in this report, the "Root Mean Square Error" is shown for selected items on the next page. The "Root Mean Square Error" is a statistical measure based on past performance and is computed using the differences between first and final estimates. The "Root Mean Square Error" for the 23 State milk cow inventory estimates over the past 24 months is 0.4 percent. This means that chances are 2 out of 3 that the final estimate will not be above or below the current estimate of 8.33 million head by more than 0.4 percent. Chances are 9 out of 10 that the difference will not exceed 0.6 percent.

Reliability of Monthly Milk Production Estimates ¹

Item	Root Mean Square Error	90% Confidence Level		Difference Between First and Latest Estimates			Months	
				Average	Smallest	Largest	First Above Latest	First Below Latest
				<i>Million Pounds</i>	<i>Million Pounds</i>	<i>Million Pounds</i>	<i>Number</i>	<i>Number</i>
Milk Production	<i>Percent</i> 0.2	<i>Percent</i> 0.3	<i>Million Pounds</i> 48	<i>Million Pounds</i> 22	<i>Million Pounds</i> 4	<i>Million Pounds</i> 58	<i>Number</i> 2	<i>Number</i> 22
All Milk Cows	<i>Percent</i> 0.4	<i>Percent</i> 0.6	<i>1,000 Head</i> 51	<i>1,000 Head</i> 20	<i>1,000 Head</i> 0	<i>1,000 Head</i> 55	<i>Number</i> 6	<i>Number</i> 14

¹ Based on the 23 State total for the past 24 months.

Information Contacts

Listed below are the commodity specialists in the Livestock Branch of the National Agricultural Statistics Service to contact for additional information.

- Dan Kerestes, Chief, Livestock Branch (202) 720-3570
- Scott Hollis, Head, Livestock Section (202) 690-2424
 - Jim Collom – Dairy Products (202) 690-3236
 - Joe Gaynor – Dairy Products Prices (202) 690-2168
 - Jason Hardegree – Cattle, Cattle on Feed (202) 720-3040
 - Sherry Bertramsen – Livestock Slaughter (515) 284-4340
 - Everett Olbert – Sheep and Goats (202) 720-4751
 - Mike Miller – Milk Production and Milk Cows (202) 720-3278
 - Nick Streff – Hogs and Pigs (202) 720-3106

ACCESS TO REPORTS!!

For your convenience, there are several ways to obtain NASS reports, data products, and services:

INTERNET ACCESS

All NASS reports are available free of charge. For free access, connect to the Internet and go to the NASS Home Page at: www.nass.usda.gov.

E-MAIL SUBSCRIPTION

All NASS reports are available by subscription free of charge direct to your e-mail address. Starting with the NASS Home Page at www.nass.usda.gov, under the right navigation, *Receive reports by Email*, click on **National** or **State**. Follow the instructions on the screen.

PRINTED REPORTS OR DATA PRODUCTS

CALL OUR TOLL-FREE ORDER DESK: 800-999-6779 (U.S. and Canada)
Other areas, please call 703-605-6220 FAX: 703-605-6880
(Visa, MasterCard, check, or money order acceptable for payment.)

ASSISTANCE

For **assistance** with general agricultural statistics or further information about NASS or its products or services, contact the **Agricultural Statistics Hotline** at **800-727-9540**, 7:30 a.m. to 4:00 p.m. ET, or e-mail: nass@nass.usda.gov.

The U.S. Department of Agriculture (USDA) prohibits discrimination in all its programs and activities on the basis of race, color, national origin, age, disability, and where applicable, sex, marital status, familial status, parental status, religion, sexual orientation, genetic information, political beliefs, reprisal, or because all or a part of an individual's income is derived from any public assistance program. (Not all prohibited bases apply to all programs.) Persons with disabilities who require alternative means for communication of program information (Braille, large print, audiotape, etc.) should contact USDA's TARGET Center at (202) 720-2600 (voice and TDD).

To file a complaint of discrimination, write to USDA, Director, Office of Civil Rights, 1400 Independence Avenue, S.W., Washington, D.C. 20250-9410, or call (800) 795-3272 (voice) or (202) 720-6382 (TDD). USDA is an equal opportunity provider and employer.