



Milk Production

ISSN: 1949-1557

Released September 17, 2010, by the National Agricultural Statistics Service (NASS), Agricultural Statistics Board, United States Department of Agriculture (USDA).

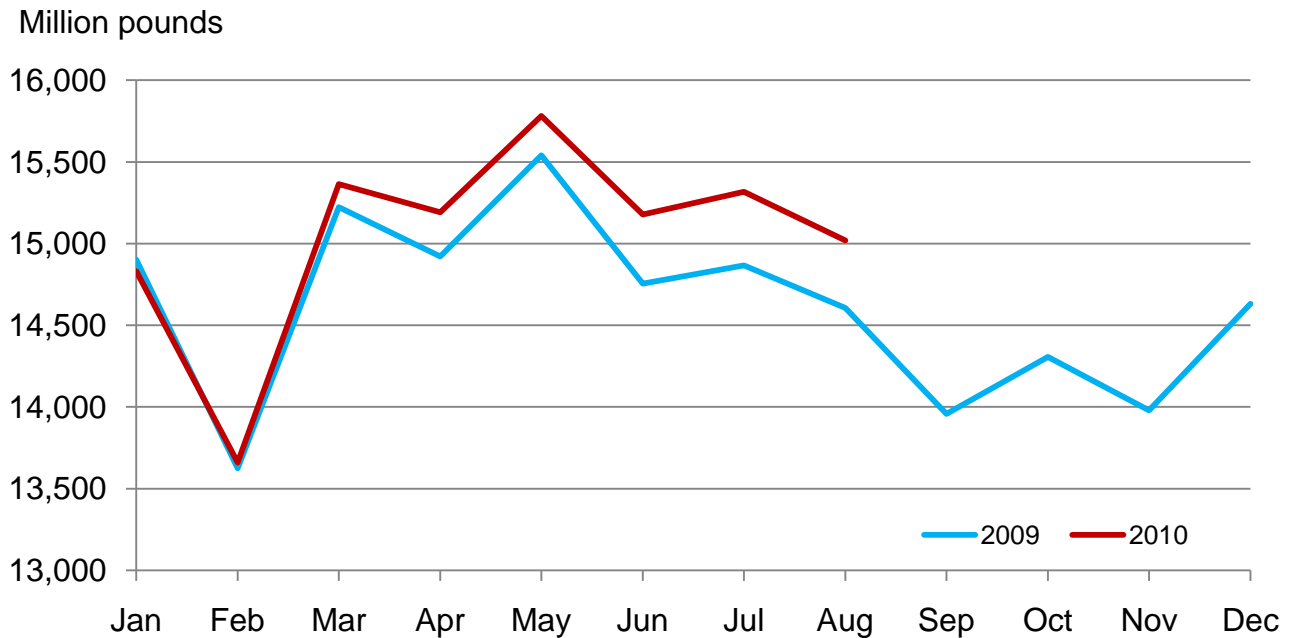
August Milk Production up 2.8 Percent

Milk production in the 23 major States during August totaled 15.0 billion pounds, up 2.8 percent from August 2009. July production, unrevised at 15.3 billion pounds, was up 3.0 percent from July 2009.

Production per cow in the 23 major States averaged 1,796 pounds for August, 51 pounds above August 2009.

The number of milk cows on farms in the 23 major States was 8.36 million head, 10,000 head less than August 2009, and 8,000 head less than July 2010.

Monthly Milk Production – 23 Selected States



Milk Cows and Production by Quarter – United States: 2009-2010

[May not add due to rounding]

Quarter	Milk cows ¹		Milk per cow ²		Milk production ²		
	2009	2010	2009	2010	2009	2010	Change from 2009
	(1,000 head)	(1,000 head)	(pounds)	(pounds)	(million pounds)	(million pounds)	(percent)
January-March	9,295	9,091	5,097	5,209	47,374	47,352	1.8
April-June	9,262	9,112	5,278	5,460	48,888	49,747	
July-September	9,155		5,111		46,793		
October-December	9,090		5,090		46,265		
Annual	9,201		20,576		189,320		

¹ Includes dry cows; excludes heifers not yet fresh.

² Excludes milk sucked by calves.

Milk Cows and Production by Month – 23 Selected States: 2009-2010

Month	Milk cows ¹		Milk per cow ²		Milk production ²		
	2009	2010	2009	2010	2009	2010	Change from 2009
	(1,000 head)	(1,000 head)	(pounds)	(pounds)	(million pounds)	(million pounds)	(percent)
January	8,506	8,315	1,752	1,784	14,902	14,831	-0.5
February	8,486	8,319	1,605	1,642	13,624	13,660	0.3
March	8,482	8,322	1,795	1,846	15,222	15,364	0.9
April	8,480	8,328	1,760	1,824	14,922	15,192	1.8
May	8,475	8,337	1,834	1,893	15,541	15,781	1.5
June	8,434	8,352	1,749	1,817	14,754	15,177	2.9
July	8,397	8,370	1,771	1,830	14,867	15,316	3.0
August	8,372	8,362	1,745	1,796	14,606	15,019	2.8
September	8,335		1,675		13,957		
October	8,316		1,720		14,306		
November	8,314		1,681		13,979		
December	8,311		1,761		14,632		
Annual	8,409		20,848		175,312		

¹ Includes dry cows; excludes heifers not yet fresh.

² Excludes milk sucked by calves.

Estimated Milk Cows and Production by Month – United States: 2009-2010

Month	Milk cows ¹		Milk per cow ²		Milk production ²		
	2009	2010	2009	2010	2009	2010	Change from 2009
	(1,000 head)	(1,000 head)	(pounds)	(pounds)	(million pounds)	(million pounds)	(percent)
January	9,312	9,087	1,733	1,763	16,135	16,016	-0.7
February	9,289	9,091	1,588	1,622	14,754	14,749	
March	9,283	9,094	1,776	1,824	16,485	16,587	0.6
April	9,282	9,101	1,740	1,801	16,148	16,389	1.5
May	9,274	9,111	1,812	1,867	16,805	17,011	1.2
June	9,230	9,125	1,726	1,791	15,935	16,347	2.6
July	9,187	9,144	1,744	1,802	16,018	16,480	2.9
August	9,159	9,135	1,718	1,768	15,737	16,155	2.7
September	9,120		1,649		15,038		
October	9,096		1,695		15,420		
November	9,091		1,658		15,070		
December	9,082		1,737		15,775		
Annual	9,201		20,576		189,320		

¹ Includes dry cows; excludes heifers not yet fresh.

² Excludes milk sucked by calves.

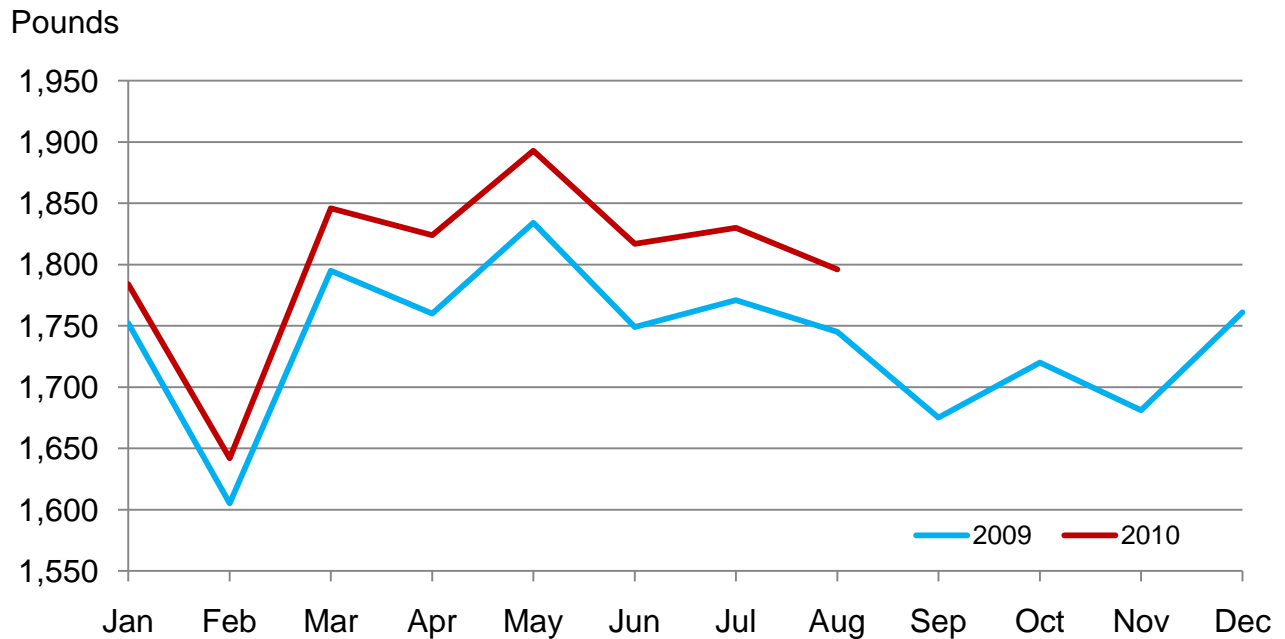
Milk Cows and Production – 23 Selected States: August 2009 and 2010

State	Milk cows ¹		Milk per cow ²		Milk production ²		Change from 2009
	2009	2010	2009	2010	2009	2010	
	(1,000 head)	(1,000 head)	(pounds)	(pounds)	(million pounds)	(million pounds)	(percent)
Arizona	171	180	1,790	1,765	306	318	3.9
California	1,782	1,745	1,820	1,950	3,243	3,403	4.9
Colorado	123	120	1,950	2,025	240	243	1.3
Florida	114	114	1,325	1,360	151	155	2.6
Idaho	548	573	1,940	2,000	1,063	1,146	7.8
Illinois	102	99	1,530	1,495	156	148	-5.1
Indiana	167	169	1,670	1,695	279	286	2.5
Iowa	215	207	1,700	1,720	366	356	-2.7
Kansas	117	120	1,745	1,725	204	207	1.5
Michigan	355	359	1,910	1,935	678	695	2.5
Minnesota	469	470	1,620	1,605	760	754	-0.8
Missouri	106	99	1,180	1,150	125	114	-8.8
New Mexico	320	318	2,000	2,025	640	644	0.6
New York	618	611	1,690	1,790	1,044	1,094	4.8
Ohio	278	270	1,570	1,640	436	443	1.6
Oregon	114	118	1,650	1,705	188	201	6.9
Pennsylvania	545	541	1,610	1,670	877	903	3.0
Texas	420	415	1,680	1,695	706	703	-0.4
Utah	83	85	1,835	1,860	152	158	3.9
Vermont	135	139	1,520	1,545	205	215	4.9
Virginia	96	95	1,450	1,475	139	140	0.7
Washington	237	252	1,995	2,015	473	508	7.4
Wisconsin	1,257	1,263	1,730	1,730	2,175	2,185	0.5
23-State Total	8,372	8,362	1,745	1,796	14,606	15,019	2.8

¹ Includes dry cows; excludes heifers not yet fresh.

² Excludes milk sucked by calves.

Monthly Milk per Cow – 23 Selected States



Milk Cows and Production – 23 Selected States: July 2009 and 2010

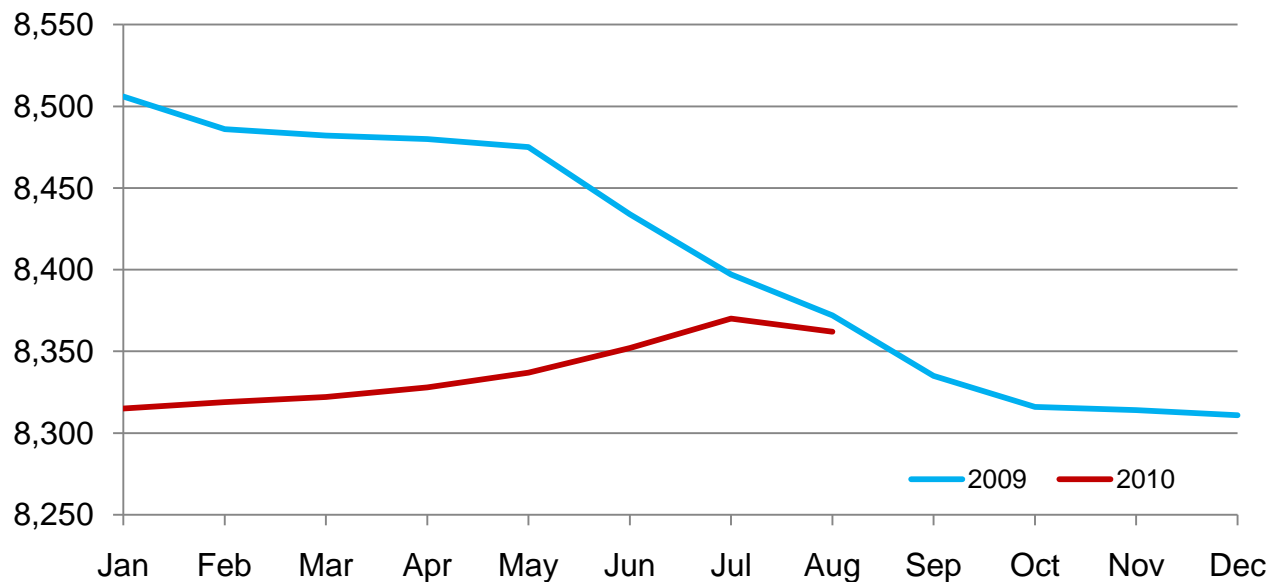
State	Milk cows ¹		Milk per cow ²		Milk production ²		Change from 2009
	2009	2010	2009	2010	2009	2010	
	(1,000 head)	(1,000 head)	(pounds)	(pounds)	(million pounds)	(million pounds)	(percent)
Arizona	171	179	1,800	1,870	308	335	8.8
California	1,790	1,748	1,815	1,945	3,249	3,400	4.6
Colorado	124	119	1,970	2,050	244	244	
Florida	115	115	1,450	1,530	167	176	5.4
Idaho	550	569	1,930	2,000	1,062	1,138	7.2
Illinois	102	101	1,580	1,575	161	159	-1.2
Indiana	168	169	1,725	1,750	290	296	2.1
Iowa	215	209	1,740	1,780	374	372	-0.5
Kansas	117	120	1,735	1,760	203	211	3.9
Michigan	356	359	1,945	1,980	692	711	2.7
Minnesota	469	470	1,670	1,675	783	787	0.5
Missouri	108	100	1,195	1,190	129	119	-7.8
New Mexico	321	324	2,050	2,095	658	679	3.2
New York	621	611	1,735	1,790	1,077	1,094	1.6
Ohio	278	270	1,630	1,690	453	456	0.7
Oregon	114	118	1,695	1,720	193	203	5.2
Pennsylvania	545	541	1,640	1,680	894	909	1.7
Texas	423	415	1,700	1,775	719	737	2.5
Utah	83	85	1,840	1,850	153	157	2.6
Vermont	135	138	1,570	1,530	212	211	-0.5
Virginia	96	95	1,510	1,505	145	143	-1.4
Washington	239	252	2,015	2,030	482	512	6.2
Wisconsin	1,257	1,263	1,765	1,795	2,219	2,267	2.2
23-State Total	8,397	8,370	1,771	1,830	14,867	15,316	3.0

¹ Includes dry cows; excludes heifers not yet fresh.

² Excludes milk sucked by calves.

Monthly Milk Cows – 23 Selected States

Thousand head



Statistical Methodology

Survey Procedures: Primary data used to determine these estimates were obtained from a sample of producers. Individual States maintain a list of all known milk producers and information on the size of their herd. States use all known sources of producers to ensure that their lists are as complete as possible. Generally, all large producers and a sample of small producers are included in the survey. Questionnaires are mailed to producers near the end of the month to obtain data for the first day of the month. Additional reports are obtained by telephone, as needed, to supplement the mail response. Where feasible, States utilize state and federal administrative data, rather than conduct a monthly or quarterly survey, to estimate milk production. This eliminates duplication of data gathering by different government agencies. Indications of milk cow inventory are also obtained in the January and July Cattle Surveys.

Estimation Procedures: State offices prepare these estimates by using a combination of survey indications, historic trends, and any available administrative data. Individual State estimates are reviewed by the Agricultural Statistics Board for reasonableness.

Revision Policy: Milk production, rate per cow, and number of cows are subject to revision the following month for monthly States or the following quarter for the quarterly States. Normally, Federal Market Order sales are the main basis for revisions. However, data for all orders are not available in time for this revision. Estimates are again subject to revisions in February each year based on additional administrative data. In the event that additional changes are necessary, a third revision is possible in February the following year. Estimates are again reviewed after data from the five-year Census of Agriculture are available. No revisions are made after that date.

Reliability: Since all operations with dairy animals are not included in the sample, survey estimates are subject to sampling variability. Survey results are also subject to non-sampling errors such as omissions, duplications, and mistakes in reporting, recording, and processing the data. The effects of these errors cannot be measured directly. They are minimized through rigid quality controls in the data collection process and through a careful review of all reported data for consistency and reasonableness.

To assist users in evaluating the reliability of the estimates in this report, the "Root Mean Square Error" is shown for selected items on the next page. The "Root Mean Square Error" is a statistical measure based on past performance and is computed using the differences between first and final estimates. The "Root Mean Square Error" for the 23 State milk cow inventory estimates over the past 24 months is 0.3 percent. This means that chances are 2 out of 3 that the final estimate will not be above or below the current estimate of 8.36 million head by more than 0.3 percent. Chances are 9 out of 10 that the difference will not exceed 0.5 percent.

Reliability of Monthly Milk Production Estimates

[Based on data for the past 24 months]

Item	Root mean square error	90 percent confidence level	Difference between first and latest estimate				
			Average	Smallest	Largest	Years	
						Below latest	Above latest
	(percent)	(percent)	(1,000)	(1,000)	(1,000)	(number)	(number)
Milk production	0.2	0.3	20	0	58	2	21
All milk cows	0.3	0.5	13	0	54	7	13

Information Contacts

Listed below are the commodity specialists in the Livestock Branch of the National Agricultural Statistics Service to contact for additional information. E-mail inquiries may be sent to nass@nass.usda.gov

Dan Kerestes, Chief, Livestock Branch	(202) 720-3570
Scott Hollis, Head, Livestock Section	(202) 690-2424
Jim Collom – Dairy Products	(202) 690-3236
Joe Gaynor – Dairy Products Prices	(202) 690-2168
Jason Hardegree – Cattle, Cattle on Feed	(202) 720-3040
Sherry Bertramsen – Livestock Slaughter	(515) 284-4340
Everett Olbert – Sheep and Goats	(202) 720-4751
Mike Miller – Milk Production and Milk Cows	(202) 720-3278
Nick Streff – Hogs and Pigs	(202) 720-3106

Access to NASS Reports

For your convenience, you may access NASS reports and products the following ways:

- All reports are available electronically, at no cost, on the NASS web site: <http://www.nass.usda.gov>
- Both national and state specific reports are available via a free e-mail subscription. To set-up this free subscription, visit <http://www.nass.usda.gov> and in the “Receive NASS Updates” box under “Receive reports by Email,” click on “National” or “State” to select the reports you would like to receive.
- Printed reports may be purchased from the National Technical Information Service (NTIS) by calling toll-free (800) 999-6779, or (703) 605-6220 if calling from outside the United States or Canada. Accepted methods of payment are Visa, MasterCard, check, or money order.

For more information on NASS surveys and reports, call the NASS Agricultural Statistics Hotline at (800) 727-9540, 7:30 a.m. to 4:00 p.m. ET, or e-mail: nass@nass.usda.gov.

The United States Department of Agriculture (USDA) prohibits discrimination in all its programs and activities on the basis of race, color, national origin, age, disability, and where applicable, sex, marital status, familial status, parental status, religion, sexual orientation, genetic information, political beliefs, reprisal, or because all or a part of an individual's income is derived from any public assistance program. (Not all prohibited bases apply to all programs.) Persons with disabilities who require alternative means for communication of program information (Braille, large print, audiotape, etc.) should contact USDA's TARGET Center at (202) 720-2600 (voice and TDD).

To file a complaint of discrimination, write to USDA, Director, Office of Civil Rights, 1400 Independence Avenue, S.W., Washington, D.C. 20250-9410, or call (800) 795-3272 (voice) or (202) 720-6382 (TDD). USDA is an equal opportunity provider and employer.

USDA Data Users' Meeting
Monday October 25, 2010

Crowne Plaza Chicago-Metro
Chicago, Illinois 60661
312-829-5000

The USDA's National Agricultural Statistics Service will be organizing an open forum for data users. The purpose will be to provide updates on pending changes in the various statistical and information programs and seek comments and input from data users. Other USDA agencies to be represented will include the Agricultural Marketing Service, the Economic Research Service, the Foreign Agricultural Service, and the World Agricultural Outlook Board. The Foreign Trade Division from the Census Bureau will also be included in the meeting.

For registration details or additional information for the Data Users' Meeting, see the NASS homepage at <http://www.nass.usda.gov/meeting/> or contact Marie Jordan (NASS) at 202-690-8141 or at marie_jordan@nass.usda.gov.

This Data Users' Meeting precedes an Industry Outlook Meeting that will be held at the same location on Tuesday October 26, 2010. The Outlook meeting brings together analysts from various commodity sectors to discuss the outlook situation. For registration details or additional information for the Industry Outlook Meeting, see the Livestock and Marketing Information Center (LMIC) homepage at <http://www.lmic.info/> or contact Erica Rosa 303-236-0461 at rosa@lmic.info or Laura Lahr 303-236-0464 at lahr@lmic.info.