



Milk Production

ISSN: 1949-1557

Released October 19, 2010, by the National Agricultural Statistics Service (NASS), Agricultural Statistics Board, United States Department of Agriculture (USDA).

September Milk Production up 3.6 Percent

Milk production in the 23 major States during September totaled 14.5 billion pounds, up 3.6 percent from September 2009. August revised production at 15.0 billion pounds, was up 2.7 percent from August 2009. The August revision represented a decrease of 18 million pounds or 0.1 percent from last month's preliminary production estimate.

Production per cow in the 23 major States averaged 1,729 pounds for September, 54 pounds above September 2009.

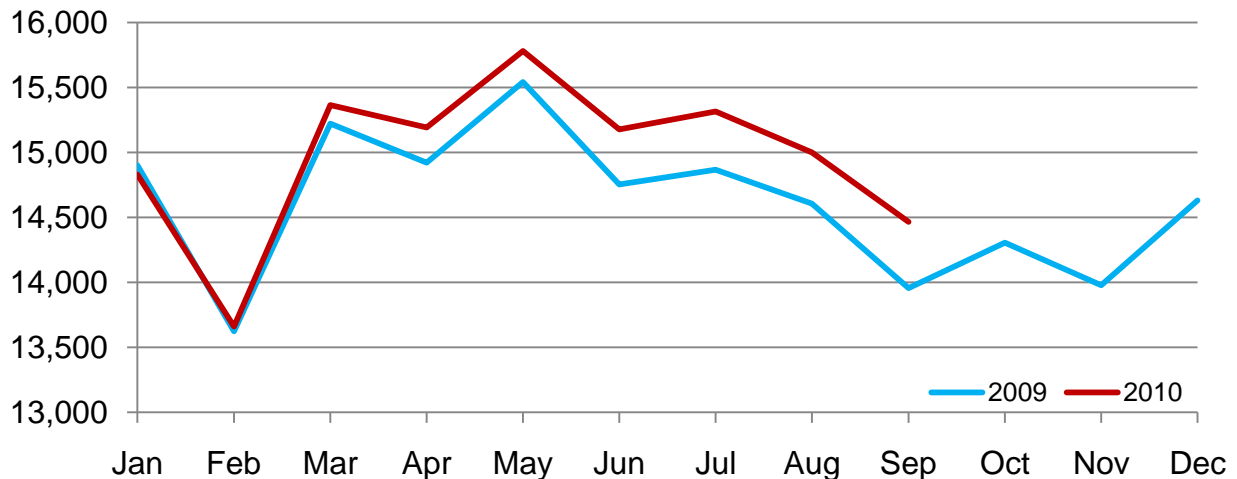
The number of milk cows on farms in the 23 major States was 8.37 million head, 31,000 head more than September 2009, and 4,000 head more than August 2010.

July - September Milk Production up 2.7 Percent

Milk production in the U.S. during the July - September quarter totaled 48.1 billion pounds, up 2.7 percent from the July - September quarter last year. The average number of milk cows in the U.S. during the quarter was 9.12 million head, 32,000 head less than the same period last year.

Monthly Milk Production – 23 Selected States

Million Pounds



Milk Cows and Production by Quarter – United States: 2009-2010

[May not add due to rounding]

Quarter	Milk cows ¹		Milk per cow ²		Milk production ²		
	2009	2010	2009	2010	2009	2010	Change from 2009
	(1,000 head)	(1,000 head)	(pounds)	(pounds)	(million pounds)	(million pounds)	(percent)
January-March	9,295	9,091	5,097	5,209	47,374	47,352	
April-June	9,262	9,111	5,278	5,461	48,888	49,753	1.8
July-September	9,155	9,123	5,111	5,269	46,793	48,071	2.7
October-December	9,090		5,090		46,265		
Annual	9,201		20,576		189,320		

¹ Includes dry cows; excludes heifers not yet fresh.

² Excludes milk sucked by calves.

Milk Cows and Production by Month – 23 Selected States: 2009-2010

Month	Milk cows ¹		Milk per cow ²		Milk production ²		
	2009	2010	2009	2010	2009	2010	Change from 2009
	(1,000 head)	(1,000 head)	(pounds)	(pounds)	(million pounds)	(million pounds)	(percent)
January	8,506	8,315	1,752	1,784	14,902	14,831	-0.5
February	8,486	8,319	1,605	1,642	13,624	13,660	0.3
March	8,482	8,322	1,795	1,846	15,222	15,364	0.9
April	8,480	8,328	1,760	1,824	14,922	15,192	1.8
May	8,475	8,337	1,834	1,893	15,541	15,781	1.5
June	8,434	8,352	1,749	1,817	14,754	15,177	2.9
July	8,397	8,370	1,771	1,830	14,867	15,316	3.0
August	8,372	8,362	1,745	1,794	14,606	15,001	2.7
September	8,335	8,366	1,675	1,729	13,957	14,466	3.6
October	8,316		1,720		14,306		
November	8,314		1,681		13,979		
December	8,311		1,761		14,632		
Annual	8,409		20,848		175,312		

¹ Includes dry cows; excludes heifers not yet fresh.

² Excludes milk sucked by calves.

Estimated Milk Cows and Production by Month – United States: 2009-2010

Month	Milk cows ¹		Milk per cow ²		Milk production ²		
	2009	2010	2009	2010	2009	2010	Change from 2009
	(1,000 head)	(1,000 head)	(pounds)	(pounds)	(million pounds)	(million pounds)	(percent)
January	9,312	9,087	1,733	1,763	16,135	16,016	-0.7
February	9,289	9,091	1,588	1,622	14,754	14,749	
March	9,283	9,094	1,776	1,824	16,485	16,587	0.6
April	9,282	9,100	1,740	1,802	16,148	16,394	1.5
May	9,274	9,109	1,812	1,868	16,805	17,015	1.2
June	9,230	9,124	1,726	1,791	15,935	16,344	2.6
July	9,187	9,134	1,744	1,800	16,018	16,441	2.6
August	9,159	9,118	1,718	1,766	15,737	16,102	2.3
September	9,120	9,116	1,649	1,703	15,038	15,528	3.3
October	9,096		1,695		15,420		
November	9,091		1,658		15,070		
December	9,082		1,737		15,775		
Annual	9,201		20,576		189,320		

¹ Includes dry cows; excludes heifers not yet fresh.

² Excludes milk sucked by calves.

Milk Cows and Production – 23 Selected States: September 2009 and 2010

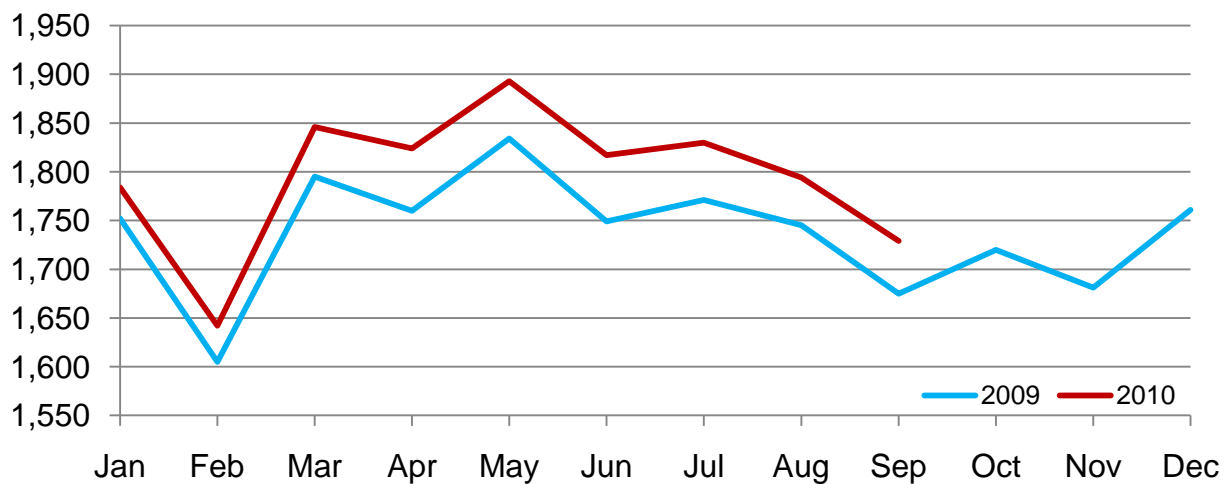
State	Milk cows ¹		Milk per cow ²		Milk production ²		Change from 2009
	2009	2010	2009	2010	2009	2010	
	(1,000 head)	(1,000 head)	(pounds)	(pounds)	(million pounds)	(million pounds)	(percent)
Arizona	167	182	1,690	1,750	282	319	13.1
California	1,769	1,747	1,735	1,885	3,069	3,293	7.3
Colorado	117	122	1,880	1,945	220	237	7.7
Florida	114	113	1,180	1,180	135	133	-1.5
Idaho	546	571	1,850	1,910	1,010	1,091	8.0
Illinois	102	99	1,480	1,485	151	147	-2.6
Indiana	168	169	1,620	1,645	272	278	2.2
Iowa	215	205	1,630	1,670	350	342	-2.3
Kansas	114	121	1,675	1,685	191	204	6.8
Michigan	355	359	1,835	1,860	651	668	2.6
Minnesota	469	470	1,545	1,520	725	714	-1.5
Missouri	105	98	1,110	1,125	117	110	-6.0
New Mexico	318	318	1,980	2,015	630	641	1.7
New York	617	611	1,620	1,695	1,000	1,036	3.6
Ohio	278	270	1,500	1,550	417	419	0.5
Oregon	114	119	1,595	1,640	182	195	7.1
Pennsylvania	542	542	1,560	1,600	846	867	2.5
Texas	416	415	1,660	1,695	691	703	1.7
Utah	83	85	1,760	1,770	146	150	2.7
Vermont	134	139	1,485	1,455	199	202	1.5
Virginia	96	95	1,405	1,430	135	136	0.7
Washington	238	252	1,915	1,940	456	489	7.2
Wisconsin	1,258	1,264	1,655	1,655	2,082	2,092	0.5
23-State Total	8,335	8,366	1,675	1,729	13,957	14,466	3.6

¹ Includes dry cows; excludes heifers not yet fresh.

² Excludes milk sucked by calves.

Monthly Milk per Cow – 23 Selected States

Pounds



Milk Cows and Production – 23 Selected States: August 2009 and 2010

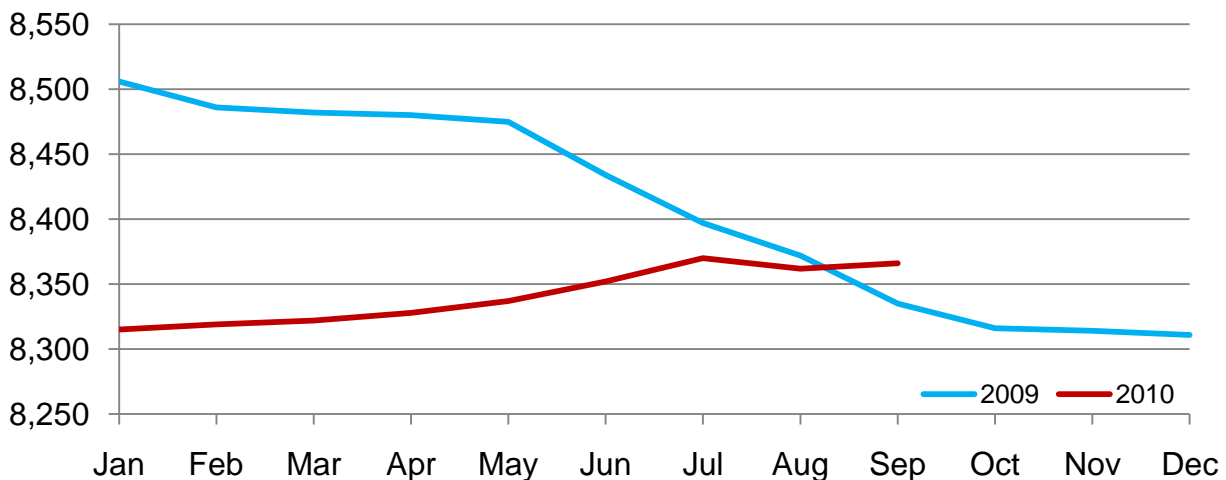
State	Milk cows ¹		Milk per cow ²		Milk production ²		Change from 2009
	2009	2010	2009	2010	2009	2010	
	(1,000 head)	(1,000 head)	(pounds)	(pounds)	(million pounds)	(million pounds)	(percent)
Arizona	171	180	1,790	1,765	306	318	3.9
California	1,782	1,746	1,820	1,950	3,243	3,405	5.0
Colorado	123	120	1,950	2,025	240	243	1.3
Florida	114	114	1,325	1,325	151	151	
Idaho	548	571	1,940	2,000	1,063	1,142	7.4
Illinois	102	99	1,530	1,495	156	148	-5.1
Indiana	167	169	1,670	1,695	279	286	2.5
Iowa	215	207	1,700	1,720	366	356	-2.7
Kansas	117	120	1,745	1,725	204	207	1.5
Michigan	355	359	1,910	1,935	678	695	2.5
Minnesota	469	470	1,620	1,595	760	750	-1.3
Missouri	106	99	1,180	1,150	125	114	-8.8
New Mexico	320	318	2,000	2,040	640	649	1.4
New York	618	611	1,690	1,790	1,044	1,094	4.8
Ohio	278	270	1,570	1,610	436	435	-0.2
Oregon	114	119	1,650	1,715	188	204	8.5
Pennsylvania	545	541	1,610	1,670	877	903	3.0
Texas	420	415	1,680	1,695	706	703	-0.4
Utah	83	85	1,835	1,830	152	156	2.6
Vermont	135	139	1,520	1,545	205	215	4.9
Virginia	96	95	1,450	1,475	139	140	0.7
Washington	237	252	1,995	2,015	473	508	7.4
Wisconsin	1,257	1,263	1,730	1,725	2,175	2,179	0.2
23-State Total	8,372	8,362	1,745	1,794	14,606	15,001	2.7

¹ Includes dry cows; excludes heifers not yet fresh.

² Excludes milk sucked by calves.

Monthly Milk Cows – 23 Selected States

Thousand Head



Milk Cows and Production: By State and United States, Revised April-June, 2009-2010

[May not add due to rounding]

State	April-June Milk Cows ¹		April-June Milk Production ²		Change from 2009
	2009	2010	2009	2010	
	(1,000 head)	(1,000 head)	(million pounds)	(million pounds)	(percent)
Alabama	11.0	11.0	45	44	-2.2
Alaska	0.6	0.6	1.5	1.9	26.7
Arizona	183	173	1,105	1,096	-0.8
Arkansas	13.0	12.5	46	42	-8.7
California	1,813	1,750	10,228	10,371	1.4
Colorado	127	117	746	708	-5.1
Connecticut	18.5	19.0	92	96	4.3
Delaware	6.0	5.5	27.0	24.0	-11.1
Florida	117	115	577	581	0.7
Georgia	75	80	378	382	1.1
Hawaii	1.5	1.9	5.5	6.3	14.5
Idaho	551	559	3,080	3,187	3.5
Illinois	102	101	496	506	2.0
Indiana	168	169	869	897	3.2
Iowa	215	212	1,120	1,130	0.9
Kansas	120	117	640	632	-1.3
Kentucky	84	79	320	315	-1.6
Louisiana	23	20	76	66	-13.2
Maine	33	32	152	150	-1.3
Maryland	56	54	262	259	-1.1
Massachusetts	14.5	14.5	64	65	1.6
Michigan	357	358	2,037	2,134	4.8
Minnesota	469	470	2,303	2,372	3.0
Mississippi	18.5	17.0	70	63	-10.0
Missouri	110	101	421	392	-6.9
Montana	15.0	14.0	76	75	-1.3
Nebraska	62	58	306	300	-2.0
Nevada	28	28	154	154	0.0
New Hampshire	15.0	15.5	76	78	2.6
New Jersey	9.0	8.0	42	36	-14.3
New Mexico	330	324	2,069	2,051	-0.9
New York	623	610	3,233	3,280	1.5
North Carolina	46	44	235	229	-2.6
North Dakota	23	21	98	97	-1.0
Ohio	278	269	1,346	1,361	1.1
Oklahoma	60	57	260	252	-3.1
Oregon	114	115	580	601	3.6
Pennsylvania	547	541	2,723	2,770	1.7
Rhode Island	1.1	1.1	5.2	5.2	0.0
South Carolina	17.5	16.5	86	78	-9.3
South Dakota	95	93	483	482	-0.2
Tennessee	56	53	246	232	-5.7
Texas	429	410	2,299	2,260	-1.7
Utah	84	85	446	461	3.4
Vermont	136	137	633	650	2.7
Virginia	96	95	451	451	0.0
Washington	239	250	1,414	1,493	5.6
West Virginia	11.0	10.0	42	41	-2.4
Wisconsin	1,256	1,261	6,401	6,766	5.7
Wyoming	5.0	6.0	22.9	29.5	28.8
United States	9,262	9,111	48,888	49,753	1.8

¹ Includes dry cows, excludes heifers not yet fresh.

² Excludes milk sucked by calves.

Milk Cows and Production: By State and United States, Preliminary July-September, 2009-2010

[May not add due to rounding]

State	July-September Milk Cows ¹		July-September Milk Production ²		Change from 2009
	2009	2010	2009	2010	
	(1,000 head)	(1,000 head)	(million pounds)	(million pounds)	(percent)
Alabama	11.0	11.0	35	32	-8.6
Alaska	0.6	0.6	1.5	2.1	40.0
Arizona	170	180	896	972	8.5
Arkansas	13.0	12.0	38	35	-7.9
California	1,780	1,747	9,561	10,098	5.6
Colorado	121	120	704	724	2.8
Connecticut	18.5	19.0	86	89	3.5
Delaware	5.5	5.0	23.0	21.0	-8.7
Florida	114	114	453	460	1.5
Georgia	75	77	318	311	-2.2
Hawaii	1.5	1.9	5.2	6.6	26.9
Idaho	548	570	3,135	3,371	7.5
Illinois	102	100	468	454	-3.0
Indiana	168	169	841	860	2.3
Iowa	215	207	1,090	1,070	-1.8
Kansas	116	120	598	622	4.0
Kentucky	83	78	280	280	
Louisiana	22	19	56	49	-12.5
Maine	33	32	152	148	-2.6
Maryland	55	53	238	239	0.4
Massachusetts	14.0	14.0	61	60	-1.6
Michigan	355	359	2,021	2,074	2.6
Minnesota	469	470	2,268	2,251	-0.7
Mississippi	17.5	16.0	51	47	-7.8
Missouri	106	99	371	343	-7.5
Montana	15.0	14.0	75	72	-4.0
Nebraska	61	58	302	290	-4.0
Nevada	28	28	153	158	3.3
New Hampshire	15.0	15.5	73	73	
New Jersey	9.0	7.5	40	34	-15.0
New Mexico	320	320	1,928	1,969	2.1
New York	619	611	3,121	3,224	3.3
North Carolina	45	44	207	206	-0.5
North Dakota	22	21	96	98	2.1
Ohio	278	270	1,306	1,310	0.3
Oklahoma	58	55	238	233	-2.1
Oregon	114	119	563	602	6.9
Pennsylvania	544	541	2,617	2,679	2.4
Rhode Island	1.1	1.1	4.8	5.0	4.2
South Carolina	17.5	16.0	73	62	-15.1
South Dakota	95	91	481	473	-1.7
Tennessee	55	52	210	193	-8.1
Texas	420	415	2,116	2,143	1.3
Utah	83	85	451	463	2.7
Vermont	135	139	616	628	1.9
Virginia	96	95	419	419	
Washington	238	252	1,411	1,509	6.9
West Virginia	11.0	10.0	41	40	-2.4
Wisconsin	1,257	1,263	6,476	6,538	1.0
Wyoming	5.0	6.0	24.2	31.4	29.8
United States	9,155	9,123	46,793	48,071	2.7

¹ Includes dry cows, excludes heifers not yet fresh.

² Excludes milk sucked by calves.

Reliability Statement

Survey Procedures: Primary data used to determine these estimates were obtained from a sample of producers. Individual States maintain a list of all known milk producers and information on the size of their herd. States use all known sources of producers to ensure that their lists are as complete as possible. Generally, all large producers and a sample of small producers are included in the survey. Questionnaires are mailed to producers near the end of the month to obtain data for the first day of the month. Additional reports are obtained by telephone, as needed, to supplement the mail response. Where feasible, States utilize state and federal administrative data, rather than conduct a monthly or quarterly survey, to estimate milk production. This eliminates duplication of data gathering by different government agencies. Indications of milk cow inventory are also obtained in the January and July Cattle Surveys.

Estimation Procedures: State offices prepare these estimates by using a combination of survey indications, historic trends, and any available administrative data. Individual State estimates are reviewed by the Agricultural Statistics Board for reasonableness.

Revision Policy: Milk production, rate per cow, and number of cows are subject to revision the following month for monthly States or the following quarter for the quarterly States. Normally, Federal Market Order sales are the main basis for revisions. However, data for all orders are not available in time for this revision. Estimates are again subject to revisions in February each year based on additional administrative data. In the event that additional changes are necessary, a third revision is possible in February the following year. Estimates are again reviewed after data from the five-year Census of Agriculture are available. No revisions are made after that date.

Reliability: Since all operations with dairy animals are not included in the sample, survey estimates are subject to sampling variability. Survey results are also subject to non-sampling errors such as omissions, duplications, and mistakes in reporting, recording, and processing the data. The effects of these errors cannot be measured directly. They are minimized through rigid quality controls in the data collection process and through a careful review of all reported data for consistency and reasonableness.

To assist users in evaluating the reliability of the estimates in this report, the "Root Mean Square Error" is shown for selected items on the next page. The "Root Mean Square Error" is a statistical measure based on past performance and is computed using the differences between first and final estimates. The "Root Mean Square Error" for milk cow inventory estimates over the past 20 quarters is 0.3 percent. This means that chances are 2 out of 3 that the final estimate will not be above or below the current estimate of 9.12 million head by more than 0.3 percent. Chances are 9 out of 10 that the difference will not exceed 0.6 percent.

Reliability of Quarterly Milk Production Estimates

[Based on data for the past 20 quarters]

Item	Root mean square error	90 percent confidence level	Difference between first and latest estimate				
			Average	Smallest	Largest	Quarters	
						Below latest	Above latest
	(percent)	(percent)	(1,000)	(1,000)	(1,000)	(number)	(number)
Milk production	0.1	0.2	43	3	97	16	4
All milk cows	0.3	0.6	24	0	52	16	2

Information Contacts

Listed below are the commodity specialists in the Livestock Branch of the National Agricultural Statistics Service to contact for additional information. E-mail inquiries may be sent to nass@nass.usda.gov

Dan Kerestes, Chief, Livestock Branch	(202) 720-3570
Scott Hollis, Head, Livestock Section	(202) 690-2424
Lorie Warren – Dairy Products	(202) 690-3236
Joe Gaynor – Dairy Products Prices	(202) 690-2168
Jason Hardegree – Cattle, Cattle on Feed	(202) 720-3040
Sherry Bertramsen – Livestock Slaughter	(515) 284-4340
Everett Olbert – Sheep and Goats	(202) 720-4751
Mike Miller – Milk Production and Milk Cows	(202) 720-3278
Nick Streff – Hogs and Pigs	(202) 720-3106

Access to NASS Reports

For your convenience, you may access NASS reports and products the following ways:

- All reports are available electronically, at no cost, on the NASS web site: <http://www.nass.usda.gov>
- Both national and state specific reports are available via a free e-mail subscription. To set-up this free subscription, visit <http://www.nass.usda.gov> and in the “Receive NASS Updates” box under “Receive reports by Email,” click on “National” or “State” to select the reports you would like to receive.
- Printed reports may be purchased from the National Technical Information Service (NTIS) by calling toll-free (800) 999-6779, or (703) 605-6220 if calling from outside the United States or Canada. Accepted methods of payment are Visa, MasterCard, check, or money order.

For more information on NASS surveys and reports, call the NASS Agricultural Statistics Hotline at (800) 727-9540, 7:30 a.m. to 4:00 p.m. ET, or e-mail: nass@nass.usda.gov.

The United States Department of Agriculture (USDA) prohibits discrimination in all its programs and activities on the basis of race, color, national origin, age, disability, and where applicable, sex, marital status, familial status, parental status, religion, sexual orientation, political beliefs, genetic information, reprisal, or because all or a part of an individual's income is derived from any public assistance program. (Not all prohibited bases apply to all programs.) Persons with disabilities who require alternative means for communication of program information (Braille, large print, audiotape, etc.) should contact USDA's TARGET Center at (202) 720-2600 (voice and TDD).

To file a complaint of discrimination, write to USDA, Assistant Secretary for Civil Rights, Office of the Assistant Secretary for Civil Rights, 1400 Independence Avenue, S.W., Stop 9410, Washington, DC 20250-9410, or call toll-free at (866) 632-9992 (English) or (800) 877-8339 (TDD) or (866) 377-8642 (English Federal-relay) or (800) 845-6136 (Spanish Federal-relay). USDA is an equal opportunity provider and employer.