



ISSN: 1949-1557

Released November 18, 2010, by the National Agricultural Statistics Service (NASS), Agricultural Statistics Board, United States Department of Agriculture (USDA).

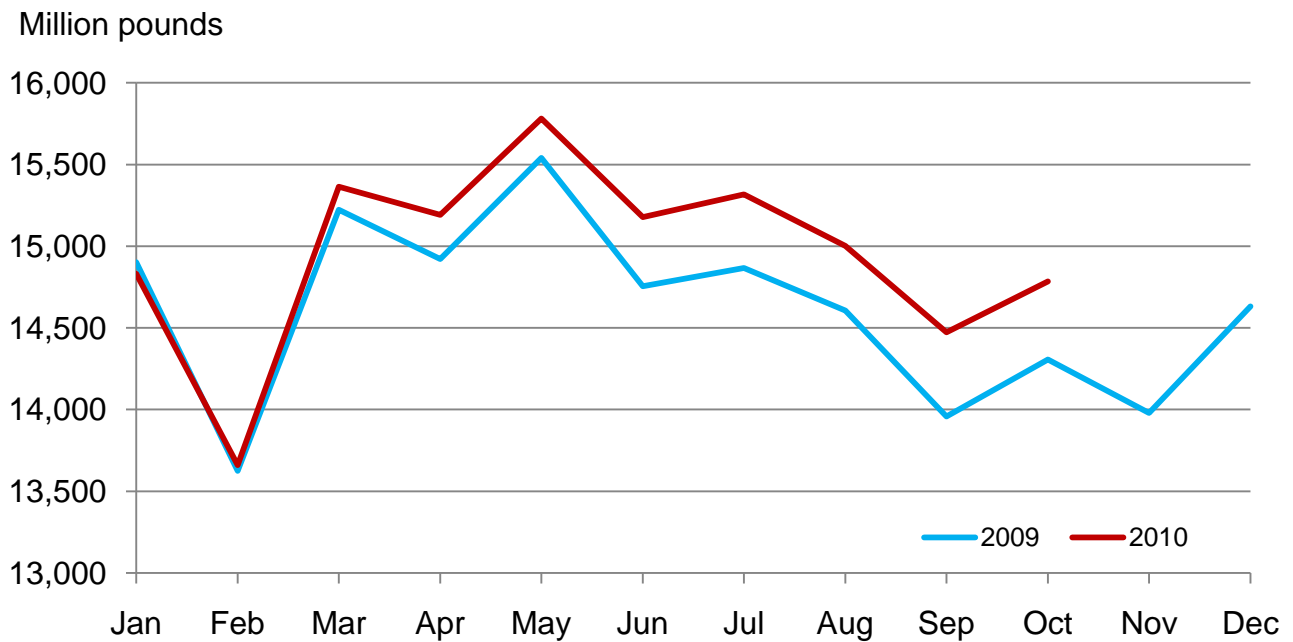
## October Milk Production up 3.3 Percent

**Milk production** in the 23 major States during October totaled 14.8 billion pounds, up 3.3 percent from October 2009. September revised production at 14.5 billion pounds, was up 3.7 percent from September 2009. The September revision represented an increase of 6 million pounds or less than 0.1 percent from last month's preliminary production estimate.

**Production per cow** in the 23 major States averaged 1,767 pounds for October, 47 pounds above October 2009.

**The number of milk cows** on farms in the 23 major States was 8.37 million head, 52,000 head more than October 2009, but unchanged from September 2010.

## Monthly Milk Production – 23 Selected States



## Milk Cows and Production by Quarter – United States: 2009-2010

[May not add due to rounding]

Quarter	Milk cows <sup>1</sup>		Milk per cow <sup>2</sup>		Milk production <sup>2</sup>		
	2009	2010	2009	2010	2009	2010	Change from 2009
	(1,000 head)	(1,000 head)	(pounds)	(pounds)	(million pounds)	(million pounds)	(percent)
January-March .....	9,295	9,091	5,097	5,209	47,374	47,352	
April-June .....	9,262	9,111	5,278	5,461	48,888	49,753	1.8
July-September .....	9,155	9,123	5,111	5,270	46,793	48,077	2.7
October-December .....	9,090		5,090		46,265		
Annual .....	9,201		20,576		189,320		

<sup>1</sup> Includes dry cows; excludes heifers not yet fresh.

<sup>2</sup> Excludes milk sucked by calves.

## Milk Cows and Production by Month – 23 Selected States: 2009-2010

Month	Milk cows <sup>1</sup>		Milk per cow <sup>2</sup>		Milk production <sup>2</sup>		
	2009	2010	2009	2010	2009	2010	Change from 2009
	(1,000 head)	(1,000 head)	(pounds)	(pounds)	(million pounds)	(million pounds)	(percent)
January .....	8,506	8,315	1,752	1,784	14,902	14,831	-0.5
February .....	8,486	8,319	1,605	1,642	13,624	13,660	0.3
March .....	8,482	8,322	1,795	1,846	15,222	15,364	0.9
April .....	8,480	8,328	1,760	1,824	14,922	15,192	1.8
May .....	8,475	8,337	1,834	1,893	15,541	15,781	1.5
June .....	8,434	8,352	1,749	1,817	14,754	15,177	2.9
July .....	8,397	8,370	1,771	1,830	14,867	15,316	3.0
August .....	8,372	8,362	1,745	1,794	14,606	15,001	2.7
September .....	8,335	8,368	1,675	1,729	13,957	14,472	3.7
October .....	8,316	8,368	1,720	1,767	14,306	14,784	3.3
November .....	8,314		1,681		13,979		
December .....	8,311		1,761		14,632		
Annual .....	8,409		20,848		175,312		

<sup>1</sup> Includes dry cows; excludes heifers not yet fresh.

<sup>2</sup> Excludes milk sucked by calves.

## Estimated Milk Cows and Production by Month – United States: 2009-2010

Month	Milk cows <sup>1</sup>		Milk per cow <sup>2</sup>		Milk production <sup>2</sup>		
	2009	2010	2009	2010	2009	2010	Change from 2009
	(1,000 head)	(1,000 head)	(pounds)	(pounds)	(million pounds)	(million pounds)	(percent)
January .....	9,312	9,087	1,733	1,763	16,135	16,016	-0.7
February .....	9,289	9,091	1,588	1,622	14,754	14,749	
March .....	9,283	9,094	1,776	1,824	16,485	16,587	0.6
April .....	9,282	9,100	1,740	1,802	16,148	16,394	1.5
May .....	9,274	9,109	1,812	1,868	16,805	17,015	1.2
June .....	9,230	9,124	1,726	1,791	15,935	16,344	2.6
July .....	9,187	9,134	1,744	1,800	16,018	16,441	2.6
August .....	9,159	9,118	1,718	1,766	15,737	16,102	2.3
September .....	9,120	9,118	1,649	1,704	15,038	15,534	3.3
October .....	9,096	9,118	1,695	1,740	15,420	15,868	2.9
November .....	9,091		1,658		15,070		
December .....	9,082		1,737		15,775		
Annual .....	9,201		20,576		189,320		

<sup>1</sup> Includes dry cows; excludes heifers not yet fresh.

<sup>2</sup> Excludes milk sucked by calves.

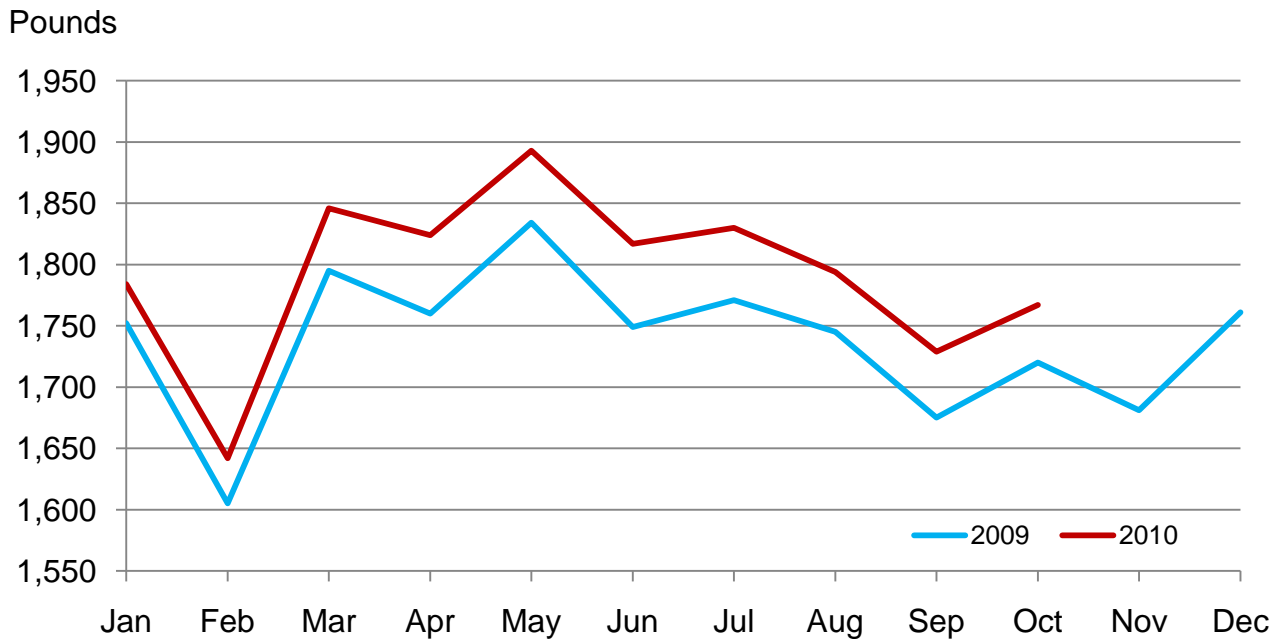
## Milk Cows and Production – 23 Selected States: October 2009 and 2010

State	Milk cows <sup>1</sup>		Milk per cow <sup>2</sup>		Milk production <sup>2</sup>		Change from 2009
	2009	2010	2009	2010	2009	2010	
	(1,000 head)	(1,000 head)	(pounds)	(pounds)	(million pounds)	(million pounds)	(percent)
Arizona .....	166	183	1,840	1,825	305	334	9.5
California .....	1,767	1,747	1,815	1,915	3,207	3,346	4.3
Colorado .....	116	122	1,920	1,975	223	241	8.1
Florida .....	113	113	1,230	1,280	139	145	4.3
Idaho .....	546	571	1,870	1,910	1,021	1,091	6.9
Illinois .....	101	98	1,550	1,560	157	153	-2.5
Indiana .....	168	169	1,680	1,710	282	289	2.5
Iowa .....	215	204	1,690	1,725	363	352	-3.0
Kansas .....	112	121	1,750	1,750	196	212	8.2
Michigan .....	355	360	1,860	1,895	660	682	3.3
Minnesota .....	469	470	1,580	1,575	741	740	-0.1
Missouri .....	105	97	1,170	1,180	123	114	-7.3
New Mexico .....	317	318	2,020	2,055	640	653	2.0
New York .....	614	611	1,640	1,725	1,007	1,054	4.7
Ohio .....	276	270	1,540	1,580	425	427	0.5
Oregon .....	114	121	1,615	1,695	184	205	11.4
Pennsylvania .....	539	541	1,600	1,640	862	887	2.9
Texas .....	413	415	1,720	1,775	710	737	3.8
Utah .....	83	85	1,780	1,790	148	152	2.7
Vermont .....	134	139	1,495	1,480	200	206	3.0
Virginia .....	95	95	1,475	1,485	140	141	0.7
Washington .....	240	254	1,940	1,965	466	499	7.1
Wisconsin .....	1,258	1,264	1,675	1,680	2,107	2,124	0.8
23-State Total .....	8,316	8,368	1,720	1,767	14,306	14,784	3.3

<sup>1</sup> Includes dry cows; excludes heifers not yet fresh.

<sup>2</sup> Excludes milk sucked by calves.

## Monthly Milk per Cow – 23 Selected States



## Milk Cows and Production – 23 Selected States: September 2009 and 2010

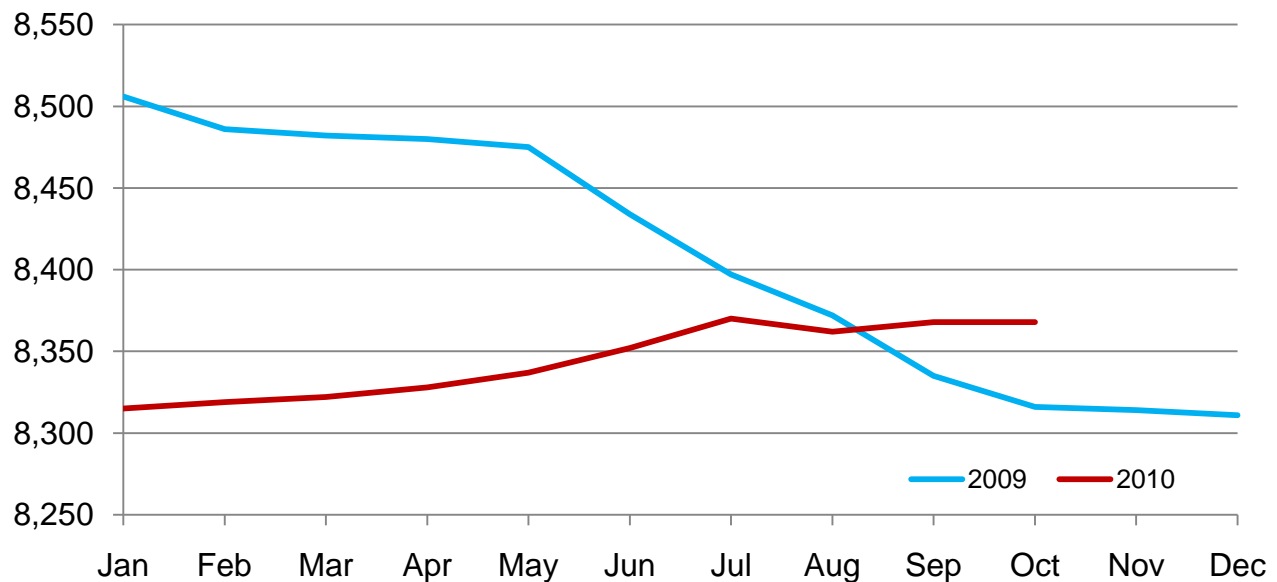
State	Milk cows <sup>1</sup>		Milk per cow <sup>2</sup>		Milk production <sup>2</sup>		Change from 2009
	2009	2010	2009	2010	2009	2010	
	(1,000 head)	(1,000 head)	(pounds)	(pounds)	(million pounds)	(million pounds)	(percent)
Arizona .....	167	182	1,690	1,750	282	319	13.1
California .....	1,769	1,747	1,735	1,885	3,069	3,293	7.3
Colorado .....	117	122	1,880	1,945	220	237	7.7
Florida .....	114	113	1,180	1,245	135	141	4.4
Idaho .....	546	571	1,850	1,900	1,010	1,085	7.4
Illinois .....	102	99	1,480	1,485	151	147	-2.6
Indiana .....	168	169	1,620	1,645	272	278	2.2
Iowa .....	215	205	1,630	1,670	350	342	-2.3
Kansas .....	114	121	1,675	1,685	191	204	6.8
Michigan .....	355	359	1,835	1,860	651	668	2.6
Minnesota .....	469	470	1,545	1,530	725	719	-0.8
Missouri .....	105	98	1,110	1,125	117	110	-6.0
New Mexico .....	318	318	1,980	2,015	630	641	1.7
New York .....	617	611	1,620	1,695	1,000	1,036	3.6
Ohio .....	278	270	1,500	1,550	417	419	0.5
Oregon .....	114	120	1,595	1,660	182	199	9.3
Pennsylvania .....	542	542	1,560	1,600	846	867	2.5
Texas .....	416	415	1,660	1,695	691	703	1.7
Utah .....	83	85	1,760	1,770	146	150	2.7
Vermont .....	134	139	1,485	1,455	199	202	1.5
Virginia .....	96	95	1,405	1,430	135	136	0.7
Washington .....	238	253	1,915	1,935	456	490	7.5
Wisconsin .....	1,258	1,264	1,655	1,650	2,082	2,086	0.2
23-State Total .....	8,335	8,368	1,675	1,729	13,957	14,472	3.7

<sup>1</sup> Includes dry cows; excludes heifers not yet fresh.

<sup>2</sup> Excludes milk sucked by calves.

## Monthly Milk Cows – 23 Selected States

Thousand head



## Statistical Methodology

**Survey Procedures:** Primary data used to determine these estimates were obtained from a sample of producers. Individual States maintain a list of all known milk producers and information on the size of their herd. States use all known sources of producers to ensure that their lists are as complete as possible. Generally, all large producers and a sample of small producers are included in the survey. Questionnaires are mailed to producers near the end of the month to obtain data for the first day of the month. Additional reports are obtained by telephone, as needed, to supplement the mail response. Where feasible, States utilize state and federal administrative data, rather than conduct a monthly or quarterly survey, to estimate milk production. This eliminates duplication of data gathering by different government agencies. Indications of milk cow inventory are also obtained in the January and July Cattle Surveys.

**Estimation Procedures:** State offices prepare these estimates by using a combination of survey indications, historic trends, and any available administrative data. Individual State estimates are reviewed by the Agricultural Statistics Board for reasonableness.

**Revision Policy:** Milk production, rate per cow, and number of cows are subject to revision the following month for monthly States or the following quarter for the quarterly States. Normally, Federal Market Order sales are the main basis for revisions. However, data for all orders are not available in time for this revision. Estimates are again subject to revisions in February each year based on additional administrative data. In the event that additional changes are necessary, a third revision is possible in February the following year. Estimates are again reviewed after data from the five-year Census of Agriculture are available. No revisions are made after that date.

**Reliability:** Since all operations with dairy animals are not included in the sample, survey estimates are subject to sampling variability. Survey results are also subject to non-sampling errors such as omissions, duplications, and mistakes in reporting, recording, and processing the data. The effects of these errors cannot be measured directly. They are minimized through rigid quality controls in the data collection process and through a careful review of all reported data for consistency and reasonableness.

To assist users in evaluating the reliability of the estimates in this report, the "Root Mean Square Error" is shown for selected items on the next page. The "Root Mean Square Error" is a statistical measure based on past performance and is computed using the differences between first and final estimates. The "Root Mean Square Error" for the 23 State milk cow inventory estimates over the past 24 months is 0.2 percent. This means that chances are 2 out of 3 that the final estimate will not be above or below the current estimate of 8.37 million head by more than 0.2 percent. Chances are 9 out of 10 that the difference will not exceed 0.4 percent.

## Reliability of Monthly Milk Production Estimates

[Based on data for the past 24 months]

Item	Root mean square error	90 percent confidence level	Difference between first and latest estimate				
			Average	Smallest	Largest	Months	
						Below latest	Above latest
	(percent)	(percent)	(1,000)	(1,000)	(1,000)	(number)	(number)
Milk production .....	0.2	0.3	20	0	58	20	3
All milk cows .....	0.2	0.4	8	0	54	12	7

## Information Contacts

Listed below are the commodity specialists in the Livestock Branch of the National Agricultural Statistics Service to contact for additional information. E-mail inquiries may be sent to [nass@nass.usda.gov](mailto:nass@nass.usda.gov)

Dan Kerestes, Chief, Livestock Branch .....	(202) 720-3570
Scott Hollis, Head, Livestock Section .....	(202) 690-2424
Lorie Warren – Dairy Products .....	(202) 690-3236
Joe Gaynor – Dairy Products Prices .....	(202) 690-2168
Jason Hardegree – Cattle, Cattle on Feed .....	(202) 720-3040
Sherry Bertramsen – Livestock Slaughter .....	(515) 284-4340
Everett Olbert – Sheep and Goats .....	(202) 720-4751
Mike Miller – Milk Production and Milk Cows .....	(202) 720-3278
Nick Streff – Hogs and Pigs .....	(202) 720-3106

## Access to NASS Reports

For your convenience, you may access NASS reports and products the following ways:

- All reports are available electronically, at no cost, on the NASS web site: <http://www.nass.usda.gov>
- Both national and state specific reports are available via a free e-mail subscription. To set-up this free subscription, visit <http://www.nass.usda.gov> and in the “Receive NASS Updates” box under “Receive reports by Email,” click on “National” or “State” to select the reports you would like to receive.
- Printed reports may be purchased from the National Technical Information Service (NTIS) by calling toll-free (800) 999-6779, or (703) 605-6220 if calling from outside the United States or Canada. Accepted methods of payment are Visa, MasterCard, check, or money order.

For more information on NASS surveys and reports, call the NASS Agricultural Statistics Hotline at (800) 727-9540, 7:30 a.m. to 4:00 p.m. ET, or e-mail: [nass@nass.usda.gov](mailto:nass@nass.usda.gov).

The United States Department of Agriculture (USDA) prohibits discrimination in all its programs and activities on the basis of race, color, national origin, age, disability, and where applicable, sex, marital status, familial status, parental status, religion, sexual orientation, political beliefs, genetic information, reprisal, or because all or a part of an individual's income is derived from any public assistance program. (Not all prohibited bases apply to all programs.) Persons with disabilities who require alternative means for communication of program information (Braille, large print, audiotape, etc.) should contact USDA's TARGET Center at (202) 720-2600 (voice and TDD).

To file a complaint of discrimination, write to USDA, Assistant Secretary for Civil Rights, Office of the Assistant Secretary for Civil Rights, 1400 Independence Avenue, S.W., Stop 9410, Washington, DC 20250-9410, or call toll-free at (866) 632-9992 (English) or (800) 877-8339 (TDD) or (866) 377-8642 (English Federal-relay) or (800) 845-6136 (Spanish Federal-relay). USDA is an equal opportunity provider and employer.



# Today's Strategies & Tomorrow's Opportunities

**February 24-25, 2011**

Crystal Gateway Marriott Hotel  
Arlington, Virginia

**[www.usda.gov/oce/forum](http://www.usda.gov/oce/forum)**

Early Bird Registration \$350 until January 21, 2011

\* \$375 after January 21

*Topical Sessions Will Address:*

- \*Risk Management
- \*Renewable Energy
- \*Rural Communities
- \*Land Tenure Issues
- \*Sustainability
- \*Foreign Trade & Domestic Markets
- \*Conservation & the Environment
- \*Nutrition & USDA Dietary Guidelines
- \*Broadband