



Milk Production

ISSN: 1949-1557

Released January 19, 2011, by the National Agricultural Statistics Service (NASS), Agricultural Statistics Board, United States Department of Agriculture (USDA).

December Milk Production up 2.8 Percent

Milk production in the 23 major States during December totaled 15.0 billion pounds, up 2.8 percent from December 2009. November revised production at 14.4 billion pounds, was up 3.1 percent from November 2009. The November revision represented an increase of 8 million pounds or 0.1 percent from last month's preliminary production estimate.

Production per cow in the 23 major States averaged 1,794 pounds for December, 33 pounds above December 2009.

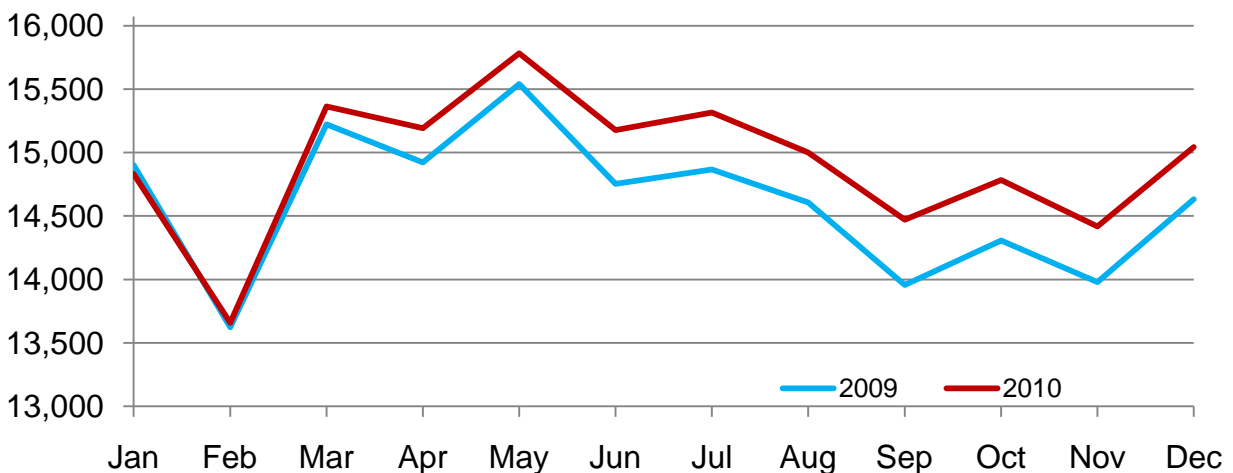
The number of milk cows on farms in the 23 major States was 8.39 million head, 74,000 head more than December 2009, and 15,000 head more than November 2010.

October - December Milk Production up 2.8 Percent

Milk production in the U.S. during the October - December quarter totaled 47.5 billion pounds, up 2.8 percent from the October - December quarter last year. The average number of milk cows in the U.S. during the quarter was 9.13 million head, 36,000 head more than the same period last year.

Monthly Milk Production - 23 Selected States

Million Pounds



Milk Cows and Production by Quarter – United States: 2009-2010

[May not add due to rounding]

Quarter	Milk cows ¹		Milk per cow ²		Milk production ²		
	2009	2010	2009	2010	2009	2010	Change from 2009
	(1,000 head)	(1,000 head)	(pounds)	(pounds)	(million pounds)	(million pounds)	(percent)
January-March	9,295	9,091	5,097	5,209	47,374	47,352	
April-June	9,262	9,111	5,278	5,461	48,888	49,753	1.8
July-September	9,155	9,122	5,111	5,271	46,793	48,078	2.7
October-December	9,090	9,126	5,090	5,210	46,265	47,543	2.8
Annual	9,201	9,113	20,576	21,148	189,320	192,726	1.8

¹ Includes dry cows; excludes heifers not yet fresh.

² Excludes milk sucked by calves.

Milk Cows and Production by Month – 23 Selected States: 2009-2010

Month	Milk cows ¹		Milk per cow ²		Milk production ²		
	2009	2010	2009	2010	2009	2010	Change from 2009
	(1,000 head)	(1,000 head)	(pounds)	(pounds)	(million pounds)	(million pounds)	(percent)
January	8,506	8,315	1,752	1,784	14,902	14,831	-0.5
February	8,486	8,319	1,605	1,642	13,624	13,660	0.3
March	8,482	8,322	1,795	1,846	15,222	15,364	0.9
April	8,480	8,328	1,760	1,824	14,922	15,192	1.8
May	8,475	8,337	1,834	1,893	15,541	15,781	1.5
June	8,434	8,352	1,749	1,817	14,754	15,177	2.9
July	8,397	8,370	1,771	1,830	14,867	15,316	3.0
August	8,372	8,362	1,745	1,794	14,606	15,001	2.7
September	8,335	8,368	1,675	1,729	13,957	14,472	3.7
October	8,316	8,371	1,720	1,766	14,306	14,784	3.3
November	8,314	8,370	1,681	1,723	13,979	14,419	3.1
December	8,311	8,385	1,761	1,794	14,632	15,042	2.8
Annual	8,409	8,350	20,848	21,442	175,312	179,039	2.1

¹ Includes dry cows; excludes heifers not yet fresh.

² Excludes milk sucked by calves.

Estimated Milk Cows and Production by Month – United States: 2009-2010

Month	Milk cows ¹		Milk per cow ²		Milk production ²		
	2009	2010	2009	2010	2009	2010	Change from 2009
	(1,000 head)	(1,000 head)	(pounds)	(pounds)	(million pounds)	(million pounds)	(percent)
January	9,312	9,087	1,733	1,763	16,135	16,016	-0.7
February	9,289	9,091	1,588	1,622	14,754	14,749	
March	9,283	9,094	1,776	1,824	16,485	16,587	0.6
April	9,282	9,100	1,740	1,802	16,148	16,394	1.5
May	9,274	9,109	1,812	1,868	16,805	17,015	1.2
June	9,230	9,124	1,726	1,791	15,935	16,344	2.6
July	9,187	9,131	1,744	1,801	16,018	16,442	2.6
August	9,159	9,117	1,718	1,766	15,737	16,102	2.3
September	9,120	9,118	1,649	1,704	15,038	15,534	3.3
October	9,096	9,121	1,695	1,742	15,420	15,885	3.0
November	9,091	9,120	1,658	1,699	15,070	15,494	2.8
December	9,082	9,136	1,737	1,769	15,775	16,164	2.5
Annual	9,201	9,113	20,576	21,148	189,320	192,726	1.8

¹ Includes dry cows; excludes heifers not yet fresh.

² Excludes milk sucked by calves.

Milk Cows and Production – 23 Selected States: December 2009 and 2010

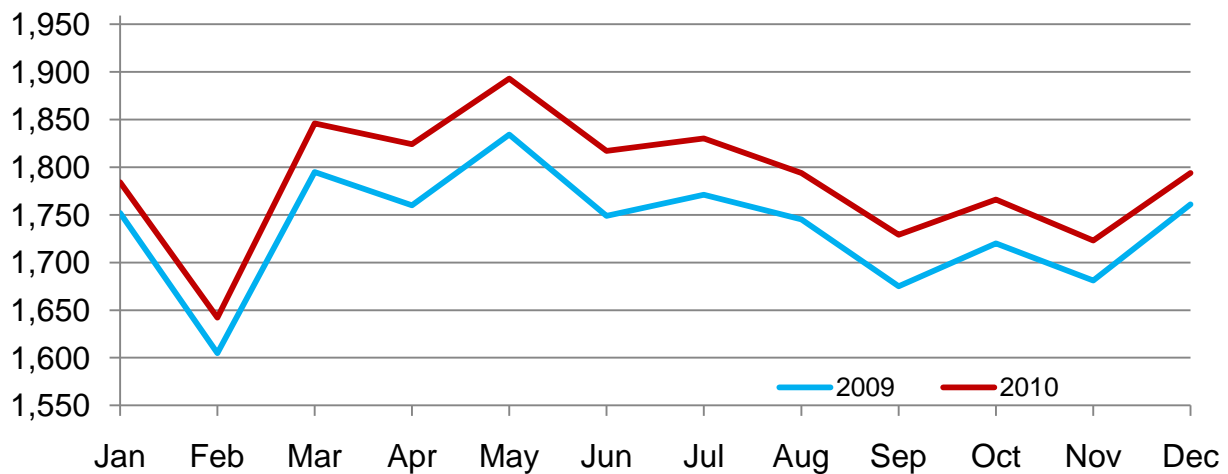
State	Milk cows ¹		Milk per cow ²		Milk production ²		Change from 2009
	2009	2010	2009	2010	2009	2010	
	(1,000 head)	(1,000 head)	(pounds)	(pounds)	(million pounds)	(million pounds)	(percent)
Arizona	167	184	2,005	1,970	335	362	8.1
California	1,762	1,748	1,865	1,930	3,286	3,374	2.7
Colorado	116	123	1,900	1,985	220	244	10.9
Florida	112	114	1,535	1,580	172	180	4.7
Idaho	550	574	1,850	1,860	1,018	1,068	4.9
Illinois	101	98	1,600	1,640	162	161	-0.6
Indiana	169	171	1,675	1,695	283	290	2.5
Iowa	215	207	1,750	1,775	376	367	-2.4
Kansas	115	122	1,785	1,805	205	220	7.3
Michigan	354	361	1,910	1,920	676	693	2.5
Minnesota	470	470	1,630	1,630	766	766	
Missouri	103	95	1,230	1,230	127	117	-7.9
New Mexico	318	321	2,015	2,065	641	663	3.4
New York	610	611	1,675	1,750	1,022	1,069	4.6
Ohio	272	270	1,580	1,620	430	437	1.6
Oregon	114	121	1,625	1,650	185	200	8.1
Pennsylvania	539	542	1,620	1,640	873	889	1.8
Texas	411	420	1,795	1,845	738	775	5.0
Utah	82	86	1,795	1,780	147	153	4.1
Vermont	134	135	1,545	1,585	207	214	3.4
Virginia	95	95	1,525	1,545	145	147	1.4
Washington	243	252	1,940	1,945	471	490	4.0
Wisconsin	1,259	1,265	1,705	1,710	2,147	2,163	0.7
23-State Total	8,311	8,385	1,761	1,794	14,632	15,042	2.8

¹ Includes dry cows; excludes heifers not yet fresh.

² Excludes milk sucked by calves.

Monthly Milk per Cow - 23 Selected States

Pounds



Milk Cows and Production – 23 Selected States: November 2009 and 2010

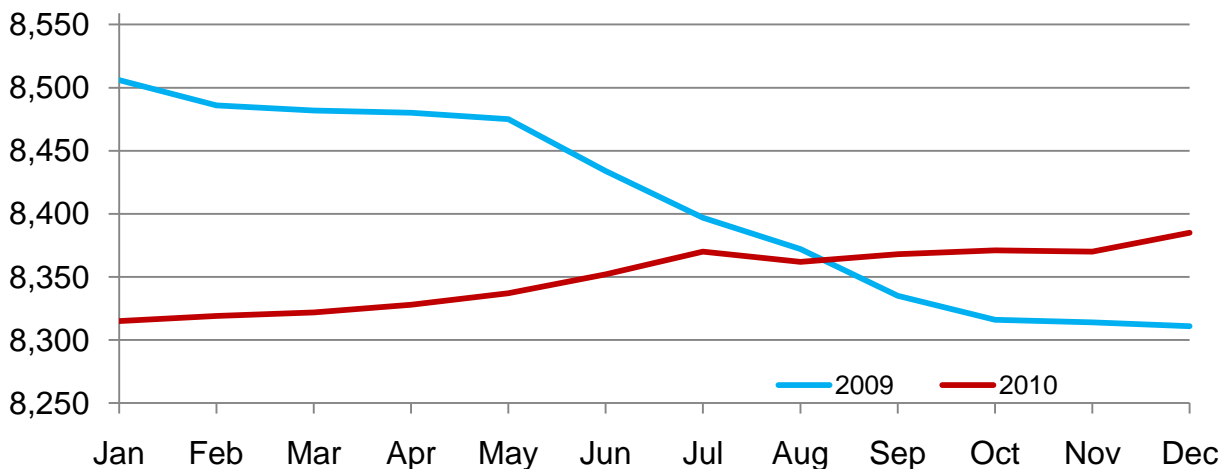
State	Milk cows ¹		Milk per cow ²		Milk production ²		Change from 2009
	2009	2010	2009	2010	2009	2010	
	(1,000 head)	(1,000 head)	(pounds)	(pounds)	(million pounds)	(million pounds)	(percent)
Arizona	168	183	1,840	1,835	309	336	8.7
California	1,765	1,750	1,775	1,870	3,133	3,273	4.5
Colorado	116	122	1,860	1,920	216	234	8.3
Florida	113	114	1,360	1,465	154	167	8.4
Idaho	548	572	1,790	1,830	981	1,047	6.7
Illinois	101	98	1,510	1,550	153	152	-0.7
Indiana	169	169	1,610	1,640	272	277	1.8
Iowa	215	204	1,670	1,700	359	347	-3.3
Kansas	113	121	1,725	1,730	195	209	7.2
Michigan	354	360	1,805	1,830	639	659	3.1
Minnesota	469	470	1,545	1,525	725	717	-1.1
Missouri	105	96	1,170	1,180	123	113	-8.1
New Mexico	317	319	1,970	1,985	624	633	1.4
New York	611	611	1,605	1,680	981	1,026	4.6
Ohio	274	270	1,510	1,560	414	421	1.7
Oregon	114	121	1,560	1,600	178	194	9.0
Pennsylvania	538	541	1,560	1,600	839	866	3.2
Texas	413	415	1,710	1,750	706	726	2.8
Utah	83	85	1,740	1,720	144	146	1.4
Vermont	134	136	1,460	1,485	196	202	3.1
Virginia	95	95	1,455	1,465	138	139	0.7
Washington	241	253	1,865	1,870	449	473	5.3
Wisconsin	1,258	1,265	1,630	1,630	2,051	2,062	0.5
23-State Total	8,314	8,370	1,681	1,723	13,979	14,419	3.1

¹ Includes dry cows; excludes heifers not yet fresh.

² Excludes milk sucked by calves.

Monthly Milk Cows - 23 Selected States

Thousand Head



Milk Cows and Production: By State and United States, Revised July-September, 2009-2010

[May not add due to rounding]

State	July-September Milk Cows ¹		July-September Milk Production ²		Change from 2009
	2009	2010	2009	2010	
	(1,000 head)	(1,000 head)	(million pounds)	(million pounds)	(percent)
Alabama	11.0	11.0	35	34	-2.9
Alaska	0.6	0.6	1.5	2.1	40.0
Arizona	170	180	896	972	8.5
Arkansas	13.0	12.0	38	35	-7.9
California	1,780	1,747	9,561	10,098	5.6
Colorado	121	120	704	724	2.8
Connecticut	18.5	19.0	86	89	3.5
Delaware	5.5	5.0	23.0	21.0	-8.7
Florida	114	114	453	468	3.3
Georgia	75	77	318	311	-2.2
Hawaii	1.5	1.9	5.2	6.6	26.9
Idaho	548	570	3,135	3,365	7.3
Illinois	102	100	468	454	-3.0
Indiana	168	169	841	860	2.3
Iowa	215	207	1,090	1,070	-1.8
Kansas	116	120	598	622	4.0
Kentucky	83	78	280	280	
Louisiana	22	19.0	56	49	-12.5
Maine	33	32	152	148	-2.6
Maryland	55	53	238	239	0.4
Massachusetts	14.0	14.0	61	60	-1.6
Michigan	355	359	2,021	2,074	2.6
Minnesota	469	470	2,268	2,256	-0.5
Mississippi	17.5	16.0	51	47	-7.8
Missouri	106	99	371	343	-7.5
Montana	15.0	14.0	75	72	-4.0
Nebraska	61	58	302	290	-4.0
Nevada	28	28	153	158	3.3
New Hampshire	15.0	15.0	73	73	
New Jersey	9.0	7.5	40	34	-15.0
New Mexico	320	320	1,928	1,969	2.1
New York	619	611	3,121	3,224	3.3
North Carolina	45	44	207	206	-0.5
North Dakota	22	21	96	98	2.1
Ohio	278	270	1,306	1,310	0.3
Oklahoma	58	55	238	233	-2.1
Oregon	114	119	563	606	7.6
Pennsylvania	544	541	2,617	2,679	2.4
Rhode Island	1.1	1.1	4.8	5.0	4.2
South Carolina	17.5	16.0	73	60	-17.8
South Dakota	95	91	481	473	-1.7
Tennessee	55	52	210	194	-7.6
Texas	420	415	2,116	2,143	1.3
Utah	83	85	451	463	2.7
Vermont	135	139	616	628	1.9
Virginia	96	95	419	419	
Washington	238	252	1,411	1,510	7.0
West Virginia	11.0	10.0	41	40	-2.4
Wisconsin	1,257	1,263	6,476	6,532	0.9
Wyoming	5.0	6.0	24.2	31.4	29.8
United States	9,155	9,122	46,793	48,078	2.7

¹ Includes dry cows, excludes heifers not yet fresh.

² Excludes milk sucked by calves.

Milk Cows and Production: By State and United States, Preliminary October-December, 2009-2010

[May not add due to rounding]

State	October-December Milk Cows ¹		October-December Milk Production ²		Change from 2009
	2009	2010	2009	2010	
	(1,000 head)	(1,000 head)	(million pounds)	(million pounds)	(percent)
Alabama	11.0	11.0	36	35	-2.8
Alaska	0.6	0.5	1.5	1.6	6.7
Arizona	167	183	949	1,032	8.7
Arkansas	13.0	12.0	37	35	-5.4
California	1,765	1,749	9,626	9,988	3.8
Colorado	116	122	659	719	9.1
Connecticut	18.5	19.0	86	89	3.5
Delaware	6.0	5.0	24.0	21.0	-12.5
Florida	113	114	465	498	7.1
Georgia	76	77	321	326	1.6
Hawaii	1.6	1.9	5.3	6.3	18.9
Idaho	548	573	3,020	3,219	6.6
Illinois	101	98	472	466	-1.3
Indiana	169	170	837	853	1.9
Iowa	215	205	1,098	1,066	-2.9
Kansas	113	121	596	641	7.6
Kentucky	81	77	279	276	-1.1
Louisiana	21	19.0	58	53	-8.6
Maine	33	32	146	145	-0.7
Maryland	54	53	244	246	0.8
Massachusetts	14.0	13.5	59	57	-3.4
Michigan	354	360	1,975	2,034	3.0
Minnesota	469	470	2,232	2,214	-0.8
Mississippi	17.0	16.0	55	50	-9.1
Missouri	104	96	373	344	-7.8
Montana	15.0	14.0	73	69	-5.5
Nebraska	60	58	301	288	-4.3
Nevada	28	28	152	157	3.3
New Hampshire	15.0	15.0	71	72	1.4
New Jersey	8.5	7.5	36	33	-8.3
New Mexico	317	319	1,905	1,949	2.3
New York	612	611	3,010	3,149	4.6
North Carolina	44	44	208	211	1.4
North Dakota	21	20	93	93	
Ohio	274	270	1,269	1,290	1.7
Oklahoma	57	54	239	228	-4.6
Oregon	114	121	547	597	9.1
Pennsylvania	539	541	2,574	2,642	2.6
Rhode Island	1.1	1.1	4.6	5.0	8.7
South Carolina	17.5	16.0	74	66	-10.8
South Dakota	93	90	468	463	-1.1
Tennessee	54	51	209	202	-3.3
Texas	412	417	2,154	2,238	3.9
Utah	83	85	439	451	2.7
Vermont	134	136	603	623	3.3
Virginia	95	95	423	425	0.5
Washington	241	253	1,386	1,458	5.2
West Virginia	10.0	10.0	38	39	2.6
Wisconsin	1,258	1,265	6,305	6,349	0.7
Wyoming	6.0	6.0	29.3	31.4	7.2
United States	9,090	9,126	46,265	47,543	2.8

¹ Includes dry cows, excludes heifers not yet fresh.

² Excludes milk sucked by calves.

Reliability Statement

Survey Procedures: Primary data used to determine these estimates were obtained from a sample of producers. Individual States maintain a list of all known milk producers and information on the size of their herd. States use all known sources of producers to ensure that their lists are as complete as possible. Generally, all large producers and a sample of small producers are included in the survey. Questionnaires are mailed to producers near the end of the month to obtain data for the first day of the month. Additional reports are obtained by telephone, as needed, to supplement the mail response. Where feasible, States utilize state and federal administrative data, rather than conduct a monthly or quarterly survey, to estimate milk production. This eliminates duplication of data gathering by different government agencies. Indications of milk cow inventory are also obtained in the January and July Cattle Surveys.

Estimation Procedures: State offices prepare these estimates by using a combination of survey indications, historic trends, and any available administrative data. Individual State estimates are reviewed by the Agricultural Statistics Board for reasonableness.

Revision Policy: Milk production, rate per cow, and number of cows are subject to revision the following month for monthly States or the following quarter for the quarterly States. Normally, Federal Market Order sales are the main basis for revisions. However, data for all orders are not available in time for this revision. Estimates are again subject to revisions in February each year based on additional administrative data. In the event that additional changes are necessary, a third revision is possible in February the following year. Estimates are again reviewed after data from the five-year Census of Agriculture are available. No revisions are made after that date.

Reliability: Since all operations with dairy animals are not included in the sample, survey estimates are subject to sampling variability. Survey results are also subject to non-sampling errors such as omissions, duplications, and mistakes in reporting, recording, and processing the data. The effects of these errors cannot be measured directly. They are minimized through rigid quality controls in the data collection process and through a careful review of all reported data for consistency and reasonableness.

To assist users in evaluating the reliability of the estimates in this report, the "Root Mean Square Error" is shown for selected items on the next page. The "Root Mean Square Error" is a statistical measure based on past performance and is computed using the differences between first and final estimates. The "Root Mean Square Error" for milk cow inventory estimates over the past 20 quarters is 0.3 percent. This means that chances are 2 out of 3 that the final estimate will not be above or below the current estimate of 9.14 million head by more than 0.3 percent. Chances are 9 out of 10 that the difference will not exceed 0.5 percent.

Reliability of Quarterly Milk Production Estimates

[Based on data for the past 20 quarters]

Item	Root mean square error	90 percent confidence level	Difference between first and latest estimate				
			Average	Smallest	Largest	Quarters	
						Below latest	Above latest
	(percent)	(percent)	(1,000)	(1,000)	(1,000)	(number)	(number)
Milk production	0.1	0.2	39	3	95	16	4
All milk cows	0.3	0.5	23	0	52	15	3

Information Contacts

Listed below are the commodity specialists in the Livestock Branch of the National Agricultural Statistics Service to contact for additional information. E-mail inquiries may be sent to nass@nass.usda.gov

Dan Kerestes, Chief, Livestock Branch	(202) 720-3570
Scott Hollis, Head, Livestock Section	(202) 690-2424
Sherry Bertramsen – Livestock Slaughter	(515) 284-4340
Joe Gaynor – Dairy Products Prices	(202) 690-2168
Jason Hardegree – Cattle, Cattle on Feed	(202) 720-3040
Mike Miller – Milk Production and Milk Cows	(202) 720-3278
Everett Olbert – Sheep and Goats	(202) 720-4751
Nick Streff – Hogs and Pigs	(202) 720-3106
Lorie Warren – Dairy Products	(202) 690-3236

Access to NASS Reports

For your convenience, you may access NASS reports and products the following ways:

- All reports are available electronically, at no cost, on the NASS web site: <http://www.nass.usda.gov>
- Both national and state specific reports are available via a free e-mail subscription. To set-up this free subscription, visit <http://www.nass.usda.gov> and in the “Receive NASS Updates” box under “Receive reports by Email,” click on “National” or “State” to select the reports you would like to receive.
- Printed reports may be purchased from the National Technical Information Service (NTIS) by calling toll-free (800) 999-6779, or (703) 605-6220 if calling from outside the United States or Canada. Accepted methods of payment are Visa, MasterCard, check, or money order.

For more information on NASS surveys and reports, call the NASS Agricultural Statistics Hotline at (800) 727-9540, 7:30 a.m. to 4:00 p.m. ET, or e-mail: nass@nass.usda.gov.

The United States Department of Agriculture (USDA) prohibits discrimination in all its programs and activities on the basis of race, color, national origin, age, disability, and where applicable, sex, marital status, familial status, parental status, religion, sexual orientation, political beliefs, genetic information, reprisal, or because all or a part of an individual's income is derived from any public assistance program. (Not all prohibited bases apply to all programs.) Persons with disabilities who require alternative means for communication of program information (Braille, large print, audiotape, etc.) should contact USDA's TARGET Center at (202) 720-2600 (voice and TDD).

To file a complaint of discrimination, write to USDA, Assistant Secretary for Civil Rights, Office of the Assistant Secretary for Civil Rights, 1400 Independence Avenue, S.W., Stop 9410, Washington, DC 20250-9410, or call toll-free at (866) 632-9992 (English) or (800) 877-8339 (TDD) or (866) 377-8642 (English Federal-relay) or (800) 845-6136 (Spanish Federal-relay). USDA is an equal opportunity provider and employer.



Today's Strategies & Tomorrow's Opportunities

February 24-25, 2011

Crystal Gateway Marriott Hotel
Arlington, Virginia

www.usda.gov/oce/forum

Early Bird Registration \$350 until January 21, 2011

* \$375 after January 21

Topical Sessions Will Address:

- *Risk Management
- *Renewable Energy
- *Rural Communities
- *Land Tenure Issues
- *Sustainability
- *Foreign Trade & Domestic Markets
- *Conservation & the Environment
- *Nutrition & USDA Dietary Guidelines
- *Broadband