



# Milk Production

ISSN: 1949-1557

Released May 18, 2011, by the National Agricultural Statistics Service (NASS), Agricultural Statistics Board, United States Department of Agriculture (USDA).

## April Milk Production up 1.7 Percent

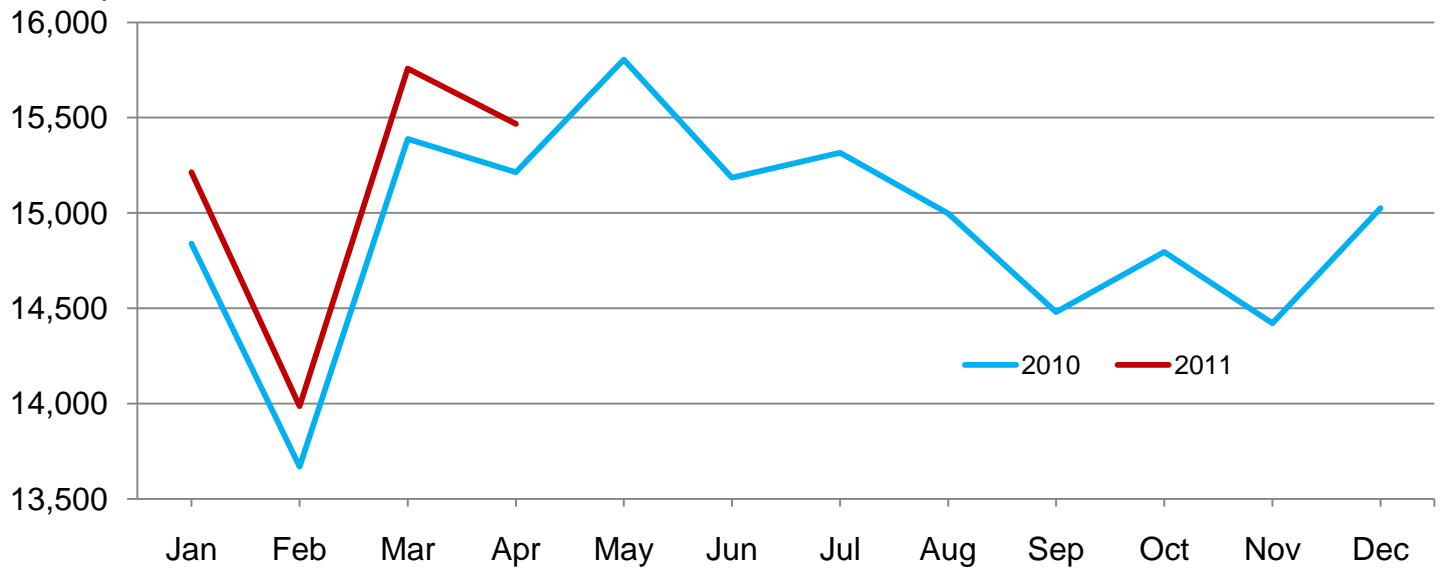
**Milk production** in the 23 major States during April totaled 15.5 billion pounds, up 1.7 percent from April 2010. March revised production at 15.8 billion pounds, was up 2.4 percent from March 2010. The March revision represented a decrease of 6 million pounds or less than 0.1 percent from last month's preliminary production estimate.

**Production per cow** in the 23 major States averaged 1,834 pounds for April, 9 pounds above April 2010.

**The number of milk cows** on farms in the 23 major States was 8.43 million head, 97,000 head more than April 2010, and 8,000 head more March 2011.

## Monthly Milk Production – 23 Selected States

Million pounds



## Milk Cows and Production by Quarter – United States: 2010-2011

[May not add due to rounding]

Quarter	Milk cows <sup>1</sup>		Milk per cow <sup>2</sup>		Milk production <sup>2</sup>		
	2010	2011	2010	2011	2010	2011	Change from 2010
	(1,000 head)	(1,000 head)	(pounds)	(pounds)	(million pounds)	(million pounds)	(percent)
January-March .....	9,093	9,164	5,212	5,284	47,392	48,426	2.2
April-June .....	9,119		5,462		49,809		
July-September .....	9,126		5,267		48,070		
October-December .....	9,130		5,208		47,548		
Annual .....	9,117		21,149		192,819		

<sup>1</sup> Includes dry cows; excludes heifers not yet fresh.

<sup>2</sup> Excludes milk sucked by calves.

## Milk Cows and Production by Month – 23 Selected States: 2010-2011

Month	Milk cows <sup>1</sup>		Milk per cow <sup>2</sup>		Milk production <sup>2</sup>		
	2010	2011	2010	2011	2010	2011	Change from 2010
	(1,000 head)	(1,000 head)	(pounds)	(pounds)	(million pounds)	(million pounds)	(percent)
January .....	8,319	8,404	1,784	1,810	14,839	15,213	2.5
February .....	8,323	8,405	1,642	1,664	13,670	13,987	2.3
March .....	8,329	8,426	1,848	1,870	15,389	15,757	2.4
April .....	8,337	8,434	1,825	1,834	15,213	15,468	1.7
May .....	8,347		1,893		15,804		
June .....	8,356		1,817		15,186		
July .....	8,375		1,829		15,316		
August .....	8,369		1,792		14,998		
September .....	8,371		1,730		14,481		
October .....	8,372		1,767		14,796		
November .....	8,373		1,722		14,421		
December .....	8,387		1,791		15,025		
Annual .....	8,355		21,440		179,138		

<sup>1</sup> Includes dry cows; excludes heifers not yet fresh.

<sup>2</sup> Excludes milk sucked by calves.

## Estimated Milk Cows and Production by Month – United States: 2010-2011

Month	Milk cows <sup>1</sup>		Milk per cow <sup>2</sup>		Milk production <sup>2</sup>		
	2010	2011	2010	2011	2010	2011	Change from 2010
	(1,000 head)	(1,000 head)	(pounds)	(pounds)	(million pounds)	(million pounds)	(percent)
January .....	9,089	9,157	1,763	1,790	16,020	16,387	2.3
February .....	9,092	9,158	1,623	1,645	14,758	15,066	2.1
March .....	9,099	9,178	1,826	1,849	16,614	16,973	2.2
April .....	9,108	9,186	1,802	1,814	16,416	16,662	1.5
May .....	9,119		1,869		17,040		
June .....	9,129		1,791		16,353		
July .....	9,135		1,799		16,436		
August .....	9,123		1,764		16,094		
September .....	9,121		1,704		15,540		
October .....	9,123		1,743		15,900		
November .....	9,125		1,698		15,498		
December .....	9,141		1,767		16,150		
Annual .....	9,117		21,149		192,819		

<sup>1</sup> Includes dry cows; excludes heifers not yet fresh.

<sup>2</sup> Excludes milk sucked by calves.

## Milk Cows and Production – 23 Selected States: April 2010 and 2011

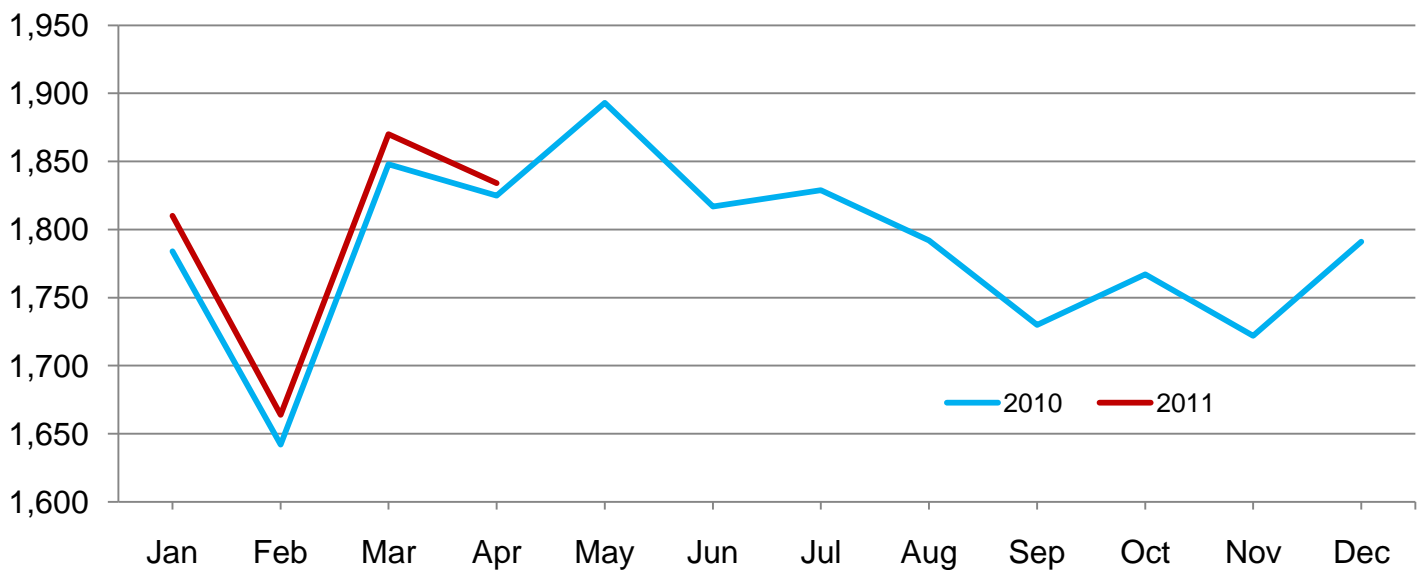
State	Milk cows <sup>1</sup>		Milk per cow <sup>2</sup>		Milk production <sup>2</sup>		Change from 2010
	2010	2011	2010	2011	2010	2011	
	(1,000 head)	(1,000 head)	(pounds)	(pounds)	(million pounds)	(million pounds)	(percent)
Arizona .....	171	187	2,145	2,125	367	397	8.2
California .....	1,755	1,769	1,955	1,990	3,431	3,520	2.6
Colorado .....	117	126	1,975	1,975	231	249	7.8
Florida .....	114	118	1,770	1,750	202	207	2.5
Idaho .....	557	576	1,850	1,870	1,030	1,077	4.6
Illinois .....	101	98	1,670	1,680	169	165	-2.4
Indiana .....	169	171	1,745	1,740	295	298	1.0
Iowa .....	212	209	1,750	1,780	371	372	0.3
Kansas .....	116	121	1,805	1,785	209	216	3.3
Michigan .....	357	362	1,970	1,955	703	708	0.7
Minnesota .....	470	471	1,650	1,615	776	761	-1.9
Missouri .....	101	94	1,325	1,360	134	128	-4.5
New Mexico .....	323	326	2,090	2,125	675	693	2.7
New York .....	610	610	1,755	1,770	1,071	1,080	0.8
Ohio .....	272	268	1,680	1,620	457	434	-5.0
Oregon .....	115	119	1,730	1,720	199	205	3.0
Pennsylvania .....	541	543	1,710	1,690	925	918	-0.8
Texas .....	410	426	1,855	1,915	761	816	7.2
Utah .....	84	87	1,780	1,740	150	151	0.7
Vermont .....	137	135	1,565	1,600	214	216	0.9
Virginia .....	95	96	1,590	1,595	151	153	1.3
Washington .....	249	256	1,975	1,980	492	507	3.0
Wisconsin .....	1,261	1,266	1,745	1,735	2,200	2,197	-0.1
23-State Total .....	8,337	8,434	1,825	1,834	15,213	15,468	1.7

<sup>1</sup> Includes dry cows; excludes heifers not yet fresh.

<sup>2</sup> Excludes milk sucked by calves.

## Monthly Milk per Cow – 23 Selected States

Pounds



## Milk Cows and Production – 23 Selected States: March 2010 and 2011

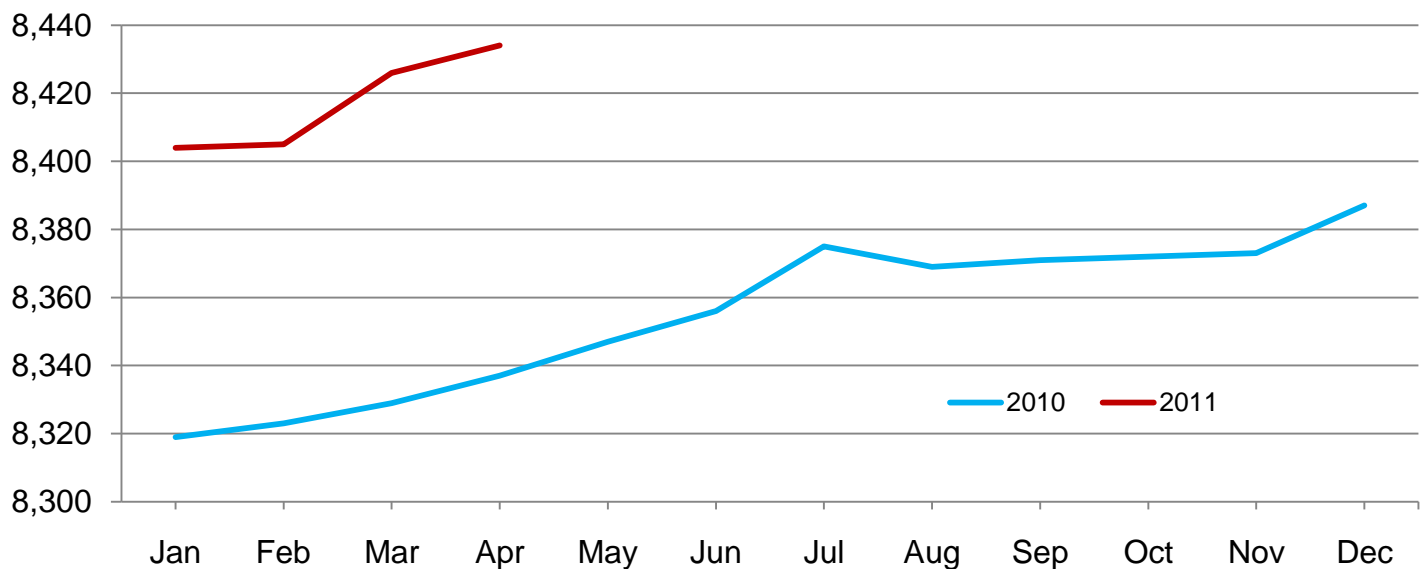
State	Milk cows <sup>1</sup>		Milk per cow <sup>2</sup>		Milk production <sup>2</sup>		Change from 2010
	2010	2011	2010	2011	2010	2011	
	(1,000 head)	(1,000 head)	(pounds)	(pounds)	(million pounds)	(million pounds)	(percent)
Arizona .....	170	187	2,180	2,180	371	408	10.0
California .....	1,758	1,764	1,980	2,035	3,481	3,590	3.1
Colorado .....	116	125	2,000	2,015	232	252	8.6
Florida .....	113	118	1,820	1,860	206	219	6.3
Idaho .....	554	576	1,880	1,880	1,042	1,083	3.9
Illinois .....	101	98	1,715	1,715	173	168	-2.9
Indiana .....	169	171	1,765	1,770	298	303	1.7
Iowa .....	210	209	1,775	1,825	373	381	2.1
Kansas .....	116	121	1,820	1,845	211	223	5.7
Michigan .....	357	362	1,990	1,975	710	715	0.7
Minnesota .....	470	471	1,675	1,655	787	780	-0.9
Missouri .....	101	94	1,295	1,365	131	128	-2.3
New Mexico .....	321	325	2,105	2,150	676	699	3.4
New York .....	610	610	1,755	1,810	1,071	1,104	3.1
Ohio .....	272	269	1,690	1,660	460	447	-2.8
Oregon .....	115	119	1,760	1,750	202	208	3.0
Pennsylvania .....	541	543	1,730	1,710	936	929	-0.7
Texas .....	410	426	1,890	1,945	775	829	7.0
Utah .....	85	87	1,810	1,770	154	154	0.0
Vermont .....	136	135	1,595	1,635	217	221	1.8
Virginia .....	95	96	1,570	1,615	149	155	4.0
Washington .....	249	254	2,025	2,025	504	514	2.0
Wisconsin .....	1,260	1,266	1,770	1,775	2,230	2,247	0.8
23-State Total .....	8,329	8,426	1,848	1,870	15,389	15,757	2.4

<sup>1</sup> Includes dry cows; excludes heifers not yet fresh.

<sup>2</sup> Excludes milk sucked by calves.

## Monthly Milk Cows – 23 Selected States

Thousand head



## Statistical Methodology

**Survey Procedures:** Primary data used to determine these estimates were obtained from a sample of producers. Individual States maintain a list of all known milk producers and information on the size of their herd. States use all known sources of producers to ensure that their lists are as complete as possible. Generally, all large producers and a sample of small producers are included in the survey. Questionnaires are mailed to producers near the end of the month to obtain data for the first day of the month. Additional reports are obtained by telephone, as needed, to supplement the mail response. Where feasible, States utilize state and federal administrative data, rather than conduct a monthly survey, to estimate milk production. This eliminates duplication of data gathering by different government agencies. Indications of milk cow inventory are also obtained in the January and July Cattle Surveys.

**Estimation Procedures:** State offices prepare these estimates by using a combination of survey indications, historic trends, and any available administrative data. Individual State estimates are reviewed by the Agricultural Statistics Board for reasonableness.

**Revision Policy:** Milk production, rate per cow, and number of cows are subject to revision the following month for monthly States or the following quarter for the quarterly States. Normally, Federal Market Order sales are the main basis for revisions. However, data for all orders are not available in time for this revision. Estimates are again subject to revisions in February each year based on additional administrative data. In the event that additional changes are necessary, a third revision is possible in February the following year. Estimates are again reviewed after data from the five-year Census of Agriculture are available. No revisions are made after that date.

**Reliability:** Since all operations with dairy animals are not included in the sample, survey estimates are subject to sampling variability. Survey results are also subject to non-sampling errors such as omissions, duplications, and mistakes in reporting, recording, and processing the data. The effects of these errors cannot be measured directly. They are minimized through rigid quality controls in the data collection process and through a careful review of all reported data for consistency and reasonableness.

To assist users in evaluating the reliability of the estimates in this report, the "Root Mean Square Error" is shown for selected items on the next page. The "Root Mean Square Error" is a statistical measure based on past performance and is computed using the differences between first and final estimates. The "Root Mean Square Error" for the 23 State milk cow inventory estimates over the past 24 months is 0.1 percent. This means that chances are 2 out of 3 that the final estimate will not be above or below the current estimate of 8.43 million head by more than 0.1 percent. Chances are 9 out of 10 that the difference will not exceed 0.1 percent.

## Reliability of Monthly Milk Production Estimates

[Based on data for the past 24 months]

Item	Root mean square error	90 percent confidence level	Difference between first and latest estimate				
			Average	Smallest	Largest	Months	
						Below latest	Above latest
	(percent)	(percent)	(1,000)	(1,000)	(1,000)	(number)	(number)
Milk production .....	0.2	0.3	21	0	63	17	6
All milk cows .....	0.1	0.1	5	0	15	18	4

## Information Contacts

Listed below are the commodity specialists in the Livestock Branch of the National Agricultural Statistics Service to contact for additional information. E-mail inquiries may be sent to [nass@nass.usda.gov](mailto:nass@nass.usda.gov)

Dan Kerestes, Chief, Livestock Branch .....	(202) 720-3570
Scott Hollis, Head, Livestock Section .....	(202) 690-2424
Travis Averill – Dairy Products Prices .....	(202) 690-2168
Sherry Bertramsen – Livestock Slaughter .....	(515) 284-4340
Doug Bounds – Hogs and Pigs .....	(202) 720-3106
Jason Hardegree – Cattle, Cattle on Feed .....	(202) 720-3040
Mike Miller – Milk Production and Milk Cows .....	(202) 720-3278
Everett Olbert – Sheep and Goats .....	(202) 720-4751
Lorie Warren – Dairy Products .....	(202) 690-3236

## Access to NASS Reports

For your convenience, you may access NASS reports and products the following ways:

- All reports are available electronically, at no cost, on the NASS web site: <http://www.nass.usda.gov>
- Both national and state specific reports are available via a free e-mail subscription. To set-up this free subscription, visit <http://www.nass.usda.gov> and in the “Receive NASS Updates” box under “Receive reports by Email,” click on “National” or “State” to select the reports you would like to receive.
- Printed reports may be purchased from the National Technical Information Service (NTIS) by calling toll-free (800) 999-6779, or (703) 605-6220 if calling from outside the United States or Canada. Accepted methods of payment are Visa, MasterCard, check, or money order.

For more information on NASS surveys and reports, call the NASS Agricultural Statistics Hotline at (800) 727-9540, 7:30 a.m. to 4:00 p.m. ET, or e-mail: [nass@nass.usda.gov](mailto:nass@nass.usda.gov).

The United States Department of Agriculture (USDA) prohibits discrimination in all its programs and activities on the basis of race, color, national origin, age, disability, and where applicable, sex, marital status, familial status, parental status, religion, sexual orientation, political beliefs, genetic information, reprisal, or because all or a part of an individual's income is derived from any public assistance program. (Not all prohibited bases apply to all programs.) Persons with disabilities who require alternative means for communication of program information (Braille, large print, audiotape, etc.) should contact USDA's TARGET Center at (202) 720-2600 (voice and TDD).

To file a complaint of discrimination, write to USDA, Assistant Secretary for Civil Rights, Office of the Assistant Secretary for Civil Rights, 1400 Independence Avenue, S.W., Stop 9410, Washington, DC 20250-9410, or call toll-free at (866) 632-9992 (English) or (800) 877-8339 (TDD) or (866) 377-8642 (English Federal-relay) or (800) 845-6136 (Spanish Federal-relay). USDA is an equal opportunity provider and employer.