



Milk Production

ISSN: 1949-1557

Released July 19, 2011, by the National Agricultural Statistics Service (NASS), Agricultural Statistics Board, United States Department of Agriculture (USDA).

June Milk Production up 1.4 Percent

Milk production in the 23 major States during June totaled 15.4 billion pounds, up 1.4 percent from June 2010. May revised production at 16.1 billion pounds, was up 1.6 percent from May 2010. The May revision represented an increase of 20 million pounds or 0.1 percent from last month's preliminary production estimate.

Production per cow in the 23 major States averaged 1,819 pounds for June, 2 pounds above June 2010.

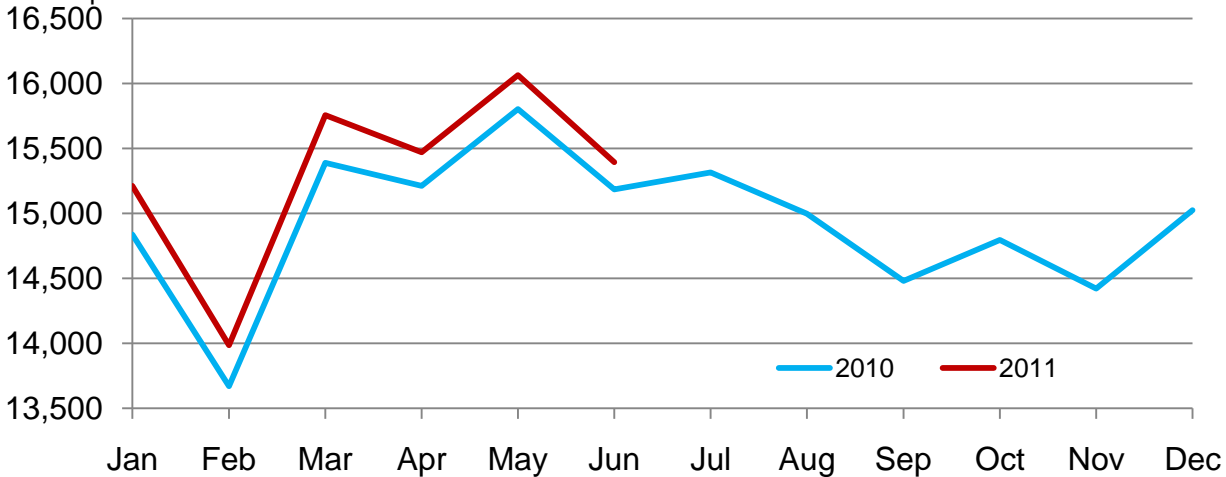
The number of milk cows on farms in the 23 major States was 8.46 million head, 106,000 head more than June 2010, and 11,000 head more than May 2011.

April - June Milk Production up 1.3 Percent

Milk production in the United States during the April - June quarter totaled 50.4 billion pounds, up 1.3 percent from the April - June quarter last year. The average number of milk cows in the United States during the quarter was 9.20 million head, 79,000 head more than the same period last year.

Monthly Milk Production – 23 Selected States

Million pounds



Milk Cows and Production by Quarter – United States: 2010-2011

[May not add due to rounding]

Quarter	Milk cows ¹		Milk per cow ²		Milk production ²		
	2010	2011	2010	2011	2010	2011	Change from 2010
	(1,000 head)	(1,000 head)	(pounds)	(pounds)	(million pounds)	(million pounds)	(percent)
January-March	9,093	9,165	5,212	5,283	47,392	48,421	2.2
April-June	9,119	9,198	5,462	5,484	49,809	50,439	1.3
July-September	9,126		5,267		48,070		
October-December	9,130		5,208		47,548		
Annual	9,117		21,149		192,819		

¹ Includes dry cows; excludes heifers not yet fresh.

² Excludes milk sucked by calves.

Milk Cows and Production by Month – 23 Selected States: 2010-2011

Month	Milk cows ¹		Milk per cow ²		Milk production ²		
	2010	2011	2010	2011	2010	2011	Change from 2010
	(1,000 head)	(1,000 head)	(pounds)	(pounds)	(million pounds)	(million pounds)	(percent)
January	8,319	8,404	1,784	1,810	14,839	15,213	2.5
February	8,323	8,405	1,642	1,664	13,670	13,987	2.3
March	8,329	8,426	1,848	1,870	15,389	15,757	2.4
April	8,337	8,435	1,825	1,834	15,213	15,471	1.7
May	8,347	8,451	1,893	1,901	15,804	16,063	1.6
June	8,356	8,462	1,817	1,819	15,186	15,394	1.4
July	8,375		1,829		15,316		
August	8,369		1,792		14,998		
September	8,371		1,730		14,481		
October	8,372		1,767		14,796		
November	8,373		1,722		14,421		
December	8,387		1,791		15,025		
Annual	8,355		21,440		179,138		

¹ Includes dry cows; excludes heifers not yet fresh.

² Excludes milk sucked by calves.

Estimated Milk Cows and Production by Month – United States: 2010-2011

Month	Milk cows ¹		Milk per cow ²		Milk production ²		
	2010	2011	2010	2011	2010	2011	Change from 2010
	(1,000 head)	(1,000 head)	(pounds)	(pounds)	(million pounds)	(million pounds)	(percent)
January	9,089	9,158	1,763	1,789	16,020	16,385	2.3
February	9,092	9,158	1,623	1,645	14,758	15,065	2.1
March	9,099	9,178	1,826	1,849	16,614	16,971	2.1
April	9,108	9,185	1,802	1,812	16,416	16,645	1.4
May	9,119	9,200	1,869	1,877	17,040	17,266	1.3
June	9,129	9,210	1,791	1,795	16,353	16,528	1.1
July	9,135		1,799		16,436		
August	9,123		1,764		16,094		
September	9,121		1,704		15,540		
October	9,123		1,743		15,900		
November	9,125		1,698		15,498		
December	9,141		1,767		16,150		
Annual	9,117		21,149		192,819		

¹ Includes dry cows; excludes heifers not yet fresh.

² Excludes milk sucked by calves.

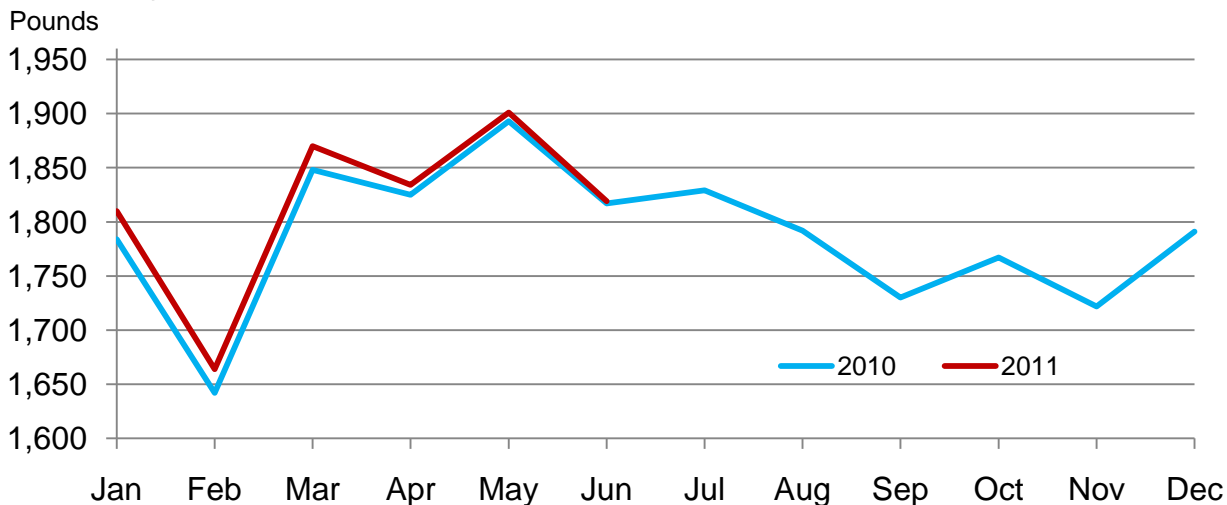
Milk Cows and Production – 23 Selected States: June 2010 and 2011

State	Milk cows ¹		Milk per cow ²		Milk production ²		Change from 2010
	2010	2011	2010	2011	2010	2011	
	(1,000 head)	(1,000 head)	(pounds)	(pounds)	(million pounds)	(million pounds)	(percent)
Arizona	176	186	2,025	1,980	356	368	3.4
California	1,754	1,773	1,935	1,980	3,394	3,511	3.4
Colorado	118	127	2,010	1,990	237	253	6.8
Florida	115	117	1,600	1,590	184	186	1.1
Idaho	562	578	1,910	1,950	1,073	1,127	5.0
Illinois	101	98	1,615	1,600	163	157	-3.7
Indiana	169	170	1,735	1,710	293	291	-0.7
Iowa	212	204	1,760	1,775	373	362	-2.9
Kansas	118	123	1,755	1,765	207	217	4.8
Michigan	359	367	2,000	1,960	718	719	0.1
Minnesota	470	471	1,670	1,590	785	749	-4.6
Missouri	100	96	1,230	1,210	123	116	-5.7
New Mexico	325	328	2,080	2,100	676	689	1.9
New York	610	610	1,770	1,775	1,080	1,083	0.3
Ohio	270	268	1,660	1,600	448	429	-4.2
Oregon	118	122	1,695	1,720	200	210	5.0
Pennsylvania	541	543	1,660	1,620	898	880	-2.0
Texas	410	434	1,775	1,850	728	803	10.3
Utah	85	88	1,810	1,770	154	156	1.3
Vermont	136	135	1,565	1,585	213	214	0.5
Virginia	95	96	1,515	1,470	144	141	-2.1
Washington	250	262	1,970	2,000	493	524	6.3
Wisconsin	1,262	1,266	1,780	1,745	2,246	2,209	-1.6
23-State Total	8,356	8,462	1,817	1,819	15,186	15,394	1.4

¹ Includes dry cows; excludes heifers not yet fresh.

² Excludes milk sucked by calves.

Monthly Milk per Cow – 23 Selected States



Milk Cows and Production – 23 Selected States: May 2010 and 2011

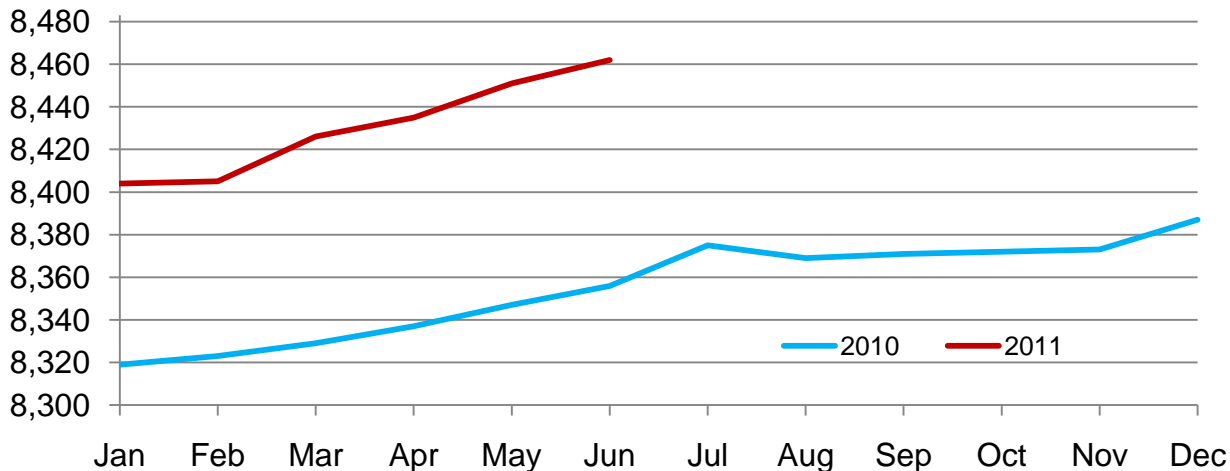
State	Milk cows ¹		Milk per cow ²		Milk production ²		Change from 2010
	2010	2011	2010	2011	2010	2011	
	(1,000 head)	(1,000 head)	(pounds)	(pounds)	(million pounds)	(million pounds)	(percent)
Arizona	173	186	2,160	2,140	374	398	6.4
California	1,755	1,772	2,020	2,075	3,545	3,677	3.7
Colorado	117	126	2,050	2,040	240	257	7.1
Florida	115	118	1,700	1,740	196	205	4.6
Idaho	559	577	1,940	1,980	1,084	1,142	5.4
Illinois	101	98	1,720	1,700	174	167	-4.0
Indiana	169	170	1,815	1,805	307	307	
Iowa	212	208	1,820	1,860	386	387	0.3
Kansas	116	121	1,860	1,870	216	226	4.6
Michigan	359	364	2,065	2,040	741	743	0.3
Minnesota	470	471	1,725	1,670	811	787	-3.0
Missouri	101	96	1,340	1,360	135	131	-3.0
New Mexico	324	327	2,160	2,180	700	713	1.9
New York	610	610	1,850	1,845	1,129	1,125	-0.4
Ohio	271	268	1,765	1,680	478	450	-5.9
Oregon	116	121	1,780	1,790	206	217	5.3
Pennsylvania	541	543	1,750	1,730	947	939	-0.8
Texas	410	430	1,880	1,950	771	839	8.8
Utah	85	87	1,850	1,810	157	157	
Vermont	137	135	1,625	1,655	223	223	
Virginia	95	96	1,640	1,585	156	152	-2.6
Washington	250	261	2,030	2,055	508	536	5.5
Wisconsin	1,261	1,266	1,840	1,805	2,320	2,285	-1.5
23-State Total	8,347	8,451	1,893	1,901	15,804	16,063	1.6

¹ Includes dry cows; excludes heifers not yet fresh.

² Excludes milk sucked by calves.

Monthly Milk Cows – 23 Selected States

Thousand head



Milk Cows and Production – States and United States: Revised January-March 2010 and 2011

[May not add due to rounding]

State	January-March milk cows ¹		January-March milk production ²		Change from 2010
	2010	2011	2010	2011	
	(1,000 head)	(1,000 head)	(million pounds)	(million pounds)	(percent)
Alabama	11.0	11.0	45.0	43.0	-4.4
Alaska	0.6	0.6	1.5	1.8	20.0
Arizona	170.0	186.0	1,048.0	1,135.0	8.3
Arkansas	13.0	12.0	41.0	38.0	-7.3
California	1,759.0	1,757.0	9,940.0	10,139.0	2.0
Colorado	116.0	124.0	665.0	716.0	7.7
Connecticut	18.5	18.5	92.0	92.0	
Delaware	5.5	5.0	24.0	24.3	1.3
Florida	113.0	117.0	567.0	624.0	10.1
Georgia	78.0	80.0	369.0	380.0	3.0
Hawaii	1.9	1.9	6.1	6.9	13.1
Idaho	553.0	574.0	3,003.0	3,117.0	3.8
Illinois	101.0	98.0	491.0	481.0	-2.0
Indiana	169.0	171.0	846.0	865.0	2.2
Iowa	212.0	209.0	1,079.0	1,093.0	1.3
Kansas	116.0	122.0	604.0	641.0	6.1
Kentucky	79.0	76.0	296.0	289.0	-2.4
Louisiana	20.0	19.0	67.0	69.0	3.0
Maine	32.0	32.0	144.0	147.0	2.1
Maryland	54.0	53.0	257.0	253.0	-1.6
Massachusetts	14.0	13.5	62.0	58.0	-6.5
Michigan	355.0	362.0	2,017.0	2,063.0	2.3
Minnesota	470.0	471.0	2,270.0	2,245.0	-1.1
Mississippi	17.0	15.0	63.0	59.0	-6.3
Missouri	101.0	95.0	366.0	354.0	-3.3
Montana	14.0	14.0	72.0	69.0	-4.2
Nebraska	59.0	57.0	290.0	290.0	
Nevada	28.0	28.0	151.0	151.0	
New Hampshire	15.0	15.0	75.0	74.0	-1.3
New Jersey	8.5	8.0	37.0	35.0	-5.4
New Mexico	319.0	324.0	1,912.0	1,991.0	4.1
New York	610.0	610.0	3,060.0	3,175.0	3.8
North Carolina	43.0	45.0	216.0	230.0	6.5
North Dakota	21.0	20.0	94.0	88.0	-6.4
Ohio	272.0	270.0	1,300.0	1,291.0	-0.7
Oklahoma	57.0	54.0	249.0	241.0	-3.2
Oregon	115.0	119.0	576.0	595.0	3.3
Pennsylvania	541.0	543.0	2,640.0	2,640.0	
Rhode Island	1.1	1.1	4.6	4.7	2.2
South Carolina	17.0	16.0	82.0	75.0	-8.5
South Dakota	93.0	91.0	466.0	460.0	-1.3
Tennessee	53.0	50.0	222.0	216.0	-2.7
Texas	410.0	425.0	2,187.0	2,357.0	7.8
Utah	84.0	87.0	443.0	442.0	-0.2
Vermont	135.0	135.0	622.0	636.0	2.3
Virginia	95.0	95.0	428.0	439.0	2.6
Washington	247.0	252.0	1,440.0	1,469.0	2.0
West Virginia	10.0	10.0	39.0	39.0	
Wisconsin	1,260.0	1,266.0	6,394.0	6,449.0	0.9
Wyoming	6.0	6.0	28.6	30.4	6.3
United States	9,093.0	9,165.0	47,392.0	48,421.0	2.2

¹ Includes dry cows, excludes heifers not yet fresh.

² Excludes milk sucked by calves.

Milk Cows and Production – States and United States: Preliminary April-June 2010 and 2011

[May not add due to rounding]

State	April-June milk cows ¹		April-June milk production ²		Change from 2010
	2010	2011	2010	2011	
	(1,000 head)	(1,000 head)	(million pounds)	(million pounds)	(percent)
Alabama	11.0	11.0	45.0	41.0	-8.9
Alaska	0.6	0.5	1.9	1.7	-10.5
Arizona	173.0	186.0	1,097.0	1,163.0	6.0
Arkansas	12.5	12.0	43.0	40.0	-7.0
California	1,755.0	1,771.0	10,370.0	10,708.0	3.3
Colorado	117.0	126.0	708.0	760.0	7.3
Connecticut	19.0	18.5	96.0	92.0	-4.2
Delaware	5.5	5.0	24.0	23.5	-2.1
Florida	115.0	118.0	582.0	598.0	2.7
Georgia	79.0	79.0	382.0	378.0	-1.0
Hawaii	1.9	1.9	6.3	7.0	11.1
Idaho	559.0	577.0	3,187.0	3,346.0	5.0
Illinois	101.0	98.0	506.0	489.0	-3.4
Indiana	169.0	170.0	895.0	896.0	0.1
Iowa	212.0	207.0	1,130.0	1,121.0	-0.8
Kansas	117.0	122.0	632.0	663.0	4.9
Kentucky	79.0	77.0	315.0	296.0	-6.0
Louisiana	20.0	18.0	66.0	61.0	-7.6
Maine	32.0	32.0	150.0	152.0	1.3
Maryland	54.0	52.0	259.0	251.0	-3.1
Massachusetts	14.0	13.0	65.0	58.0	-10.8
Michigan	358.0	364.0	2,162.0	2,170.0	0.4
Minnesota	470.0	471.0	2,372.0	2,297.0	-3.2
Mississippi	17.0	14.0	63.0	55.0	-12.7
Missouri	101.0	96.0	392.0	378.0	-3.6
Montana	14.0	14.0	75.0	72.0	-4.0
Nebraska	59.0	57.0	300.0	303.0	1.0
Nevada	28.0	29.0	154.0	163.0	5.8
New Hampshire	15.5	14.5	78.0	74.0	-5.1
New Jersey	8.0	8.0	36.0	36.0	
New Mexico	324.0	327.0	2,051.0	2,095.0	2.1
New York	610.0	610.0	3,280.0	3,288.0	0.2
North Carolina	44.0	45.0	229.0	235.0	2.6
North Dakota	21.0	19.0	99.0	88.0	-11.1
Ohio	271.0	268.0	1,383.0	1,313.0	-5.1
Oklahoma	57.0	53.0	252.0	239.0	-5.2
Oregon	116.0	121.0	605.0	633.0	4.6
Pennsylvania	541.0	543.0	2,770.0	2,737.0	-1.2
Rhode Island	1.1	1.1	5.2	5.0	-3.8
South Carolina	16.5	16.0	78.0	74.0	-5.1
South Dakota	93.0	93.0	482.0	482.0	
Tennessee	53.0	49.0	232.0	212.0	-8.6
Texas	410.0	430.0	2,260.0	2,458.0	8.8
Utah	85.0	87.0	461.0	464.0	0.7
Vermont	137.0	135.0	650.0	653.0	0.5
Virginia	95.0	96.0	451.0	445.0	-1.3
Washington	250.0	260.0	1,493.0	1,569.0	5.1
West Virginia	10.0	10.0	40.0	40.0	
Wisconsin	1,261.0	1,266.0	6,766.0	6,684.0	-1.2
Wyoming	6.0	6.0	29.5	31.5	6.8
United States	9,119.0	9,198.0	49,809.0	50,439.0	1.3

¹ Includes dry cows, excludes heifers not yet fresh.

² Excludes milk sucked by calves.

Statistical Methodology

Survey Procedures: Primary data used to determine these estimates were obtained from a sample of producers. Individual States maintain a list of all known milk producers and information on the size of their herd. States use all known sources of producers to ensure that their lists are as complete as possible. Generally, all large producers and a sample of small producers are included in the survey. Questionnaires are mailed to producers near the end of the month to obtain data for the first day of the month. Additional reports are obtained by telephone, as needed, to supplement the mail response. Where feasible, States utilize state and federal administrative data, rather than conduct a monthly survey, to estimate milk production. This eliminates duplication of data gathering by different government agencies. Indications of milk cow inventory are also obtained in the January and July Cattle Surveys.

Estimation Procedures: State offices prepare these estimates by using a combination of survey indications, historic trends, and any available administrative data. Individual State estimates are reviewed by the Agricultural Statistics Board for reasonableness.

Revision Policy: Milk production, rate per cow, and number of cows are subject to revision the following month for monthly States or the following quarter for the quarterly States. Normally, Federal Market Order sales are the main basis for revisions. However, data for all orders are not available in time for this revision. Estimates are again subject to revisions in February each year based on additional administrative data. In the event that additional changes are necessary, a third revision is possible in February the following year. Estimates are again reviewed after data from the five-year Census of Agriculture are available. No revisions are made after that date.

Reliability: Since all operations with dairy animals are not included in the sample, survey estimates are subject to sampling variability. Survey results are also subject to non-sampling errors such as omissions, duplications, and mistakes in reporting, recording, and processing the data. The effects of these errors cannot be measured directly. They are minimized through rigid quality controls in the data collection process and through a careful review of all reported data for consistency and reasonableness.

To assist users in evaluating the reliability of the estimates in this report, the "Root Mean Square Error" is shown for selected items on the next page. The "Root Mean Square Error" is a statistical measure based on past performance and is computed using the differences between first and final estimates. The "Root Mean Square Error" for milk cow inventory estimates over the past 20 quarters is 0.3 percent. This means that chances are 2 out of 3 that the final estimate will not be above or below the current estimate of 9.20 million head by more than 0.3 percent. Chances are 9 out of 10 that the difference will not exceed 0.5 percent.

Reliability of Quarterly Milk Production Estimates

[Based on data for the past 20 quarters]

Item	Root mean square error	90 percent confidence level	Difference between first and latest estimate				
			Average	Smallest	Largest	Quarters	
						Below latest	Above latest
	(percent)	(percent)	(1,000)	(1,000)	(1,000)	(number)	(number)
Milk production	0.1	0.2	40	0	95	14	5
All milk cows	0.3	0.5	21	0	52	17	0

Information Contacts

Listed below are the commodity specialists in the Livestock Branch of the National Agricultural Statistics Service to contact for additional information. E-mail inquiries may be sent to nass@nass.usda.gov

Dan Kerestes, Chief, Livestock Branch	(202) 720-3570
Scott Hollis, Head, Livestock Section	(202) 690-2424
Travis Averill – Dairy Products Prices	(202) 690-2168
Sherry Bertramsen – Livestock Slaughter	(515) 284-4340
Doug Bounds – Hogs and Pigs	(202) 720-3106
Jason Hardegree – Cattle, Cattle on Feed	(202) 720-3040
Mike Miller – Milk Production and Milk Cows	(202) 720-3278
Everett Olbert – Sheep and Goats	(202) 720-4751
Lorie Warren – Dairy Products	(202) 690-3236

Access to NASS Reports

For your convenience, you may access NASS reports and products the following ways:

- All reports are available electronically, at no cost, on the NASS web site: <http://www.nass.usda.gov>
- Both national and state specific reports are available via a free e-mail subscription. To set-up this free subscription, visit <http://www.nass.usda.gov> and in the “Receive NASS Updates” box under “Receive reports by Email,” click on “National” or “State” to select the reports you would like to receive.
- Printed reports may be purchased from the National Technical Information Service (NTIS) by calling toll-free (800) 999-6779, or (703) 605-6220 if calling from outside the United States or Canada. Accepted methods of payment are Visa, MasterCard, check, or money order.

For more information on NASS surveys and reports, call the NASS Agricultural Statistics Hotline at (800) 727-9540, 7:30 a.m. to 4:00 p.m. ET, or e-mail: nass@nass.usda.gov.

The United States Department of Agriculture (USDA) prohibits discrimination in all its programs and activities on the basis of race, color, national origin, age, disability, and where applicable, sex, marital status, familial status, parental status, religion, sexual orientation, political beliefs, genetic information, reprisal, or because all or a part of an individual's income is derived from any public assistance program. (Not all prohibited bases apply to all programs.) Persons with disabilities who require alternative means for communication of program information (Braille, large print, audiotape, etc.) should contact USDA's TARGET Center at (202) 720-2600 (voice and TDD).

To file a complaint of discrimination, write to USDA, Assistant Secretary for Civil Rights, Office of the Assistant Secretary for Civil Rights, 1400 Independence Avenue, S.W., Stop 9410, Washington, DC 20250-9410, or call toll-free at (866) 632-9992 (English) or (800) 877-8339 (TDD) or (866) 377-8642 (English Federal-relay) or (800) 845-6136 (Spanish Federal-relay). USDA is an equal opportunity provider and employer.